

York Street Park CLC Meeting #1

Waterfront Toronto

Tuesday, August 17, 2021

Welcome + Introductions

Carol Webb, Waterfront Toronto

Agenda

Welcome + Introductions

Carol Webb, Waterfront Toronto

5:30 p.m.

- Agenda review
- Introductions

Construction Liaison Committee Terms of Reference

Carol Webb, Waterfront Toronto

5:45 p.m.

- Questions/Feedback

Project Overview

Adam Novack, Waterfront Toronto

• **5:55 p.m.**

- Competition + consultation history
- Park design

Construction Schedule

Alexia MacLeod, Somerville Construction

6:10 p.m.

Construction Impact Mitigation Plan

Alexia MacLeod, Somerville Construction

6:20 p.m.

Discussion + Feedback

All

6:40 p.m.

Adjourn

7:00 p.m.

Construction Liaison Committee (CLC) Terms of Reference

Carol Webb, Waterfront Toronto

Terms of Reference

Purpose + Mandate

Effective communication and consultation with members of the public, local businesses and other stakeholders is vital to the success of this project.

- The Construction Liaison Committee (CLC) provides a structured forum for nearby residents, businesses and land-owners to discuss construction.
- The mandate of the CLC is to liaise with the Project Team during construction, to monitor and report on the impacts of construction during the project, and bring forward any issues that may arise (e.g. noise, dust, traffic).

Terms of Reference

Membership

- The CLC is designed to be a small, focused committee. Members will be selected based on their ability to liaise with their communities/constituencies and the Project Team.
- The Project Team will be represented by:
 - Waterfront Toronto
 - City of Toronto
 - Somerville Construction
 - Consultants, as required
 - Representatives of partner agencies, as required

Terms of Reference

Roles + Responsibilities

- CLC community participants will:
 - Participate in regular meetings
 - Consider any matters, issues or information about construction progress referred to them by the Project Team, and provide feedback, advice and recommendations as requested
 - Liaise with the Project Team on items such as notifications/communications with the group they represent and managing construction impacts (eg.noise, dust, traffic)
 - Be open and receptive and carefully consider ideas and perspectives of the Project Team
 - Bring forward advice, issues and/or comments on behalf of the organization/community they represent, communicate back to that group and coordinate follow-up meetings or information sessions with individual groups as necessary

Terms of Reference

Roles + Responsibilities

- The Project Team will:
 - Strive to provide accurate, understandable information to Committee participants so they can contribute informed feedback, advice and recommendations
 - Ensure that appropriate Project Team staff are present at discussions on specific issues or components relating to the Committee's mandate
 - Be open and receptive and carefully consider the advice and ideas received from the Committee, and will take appropriate measures to ensure that issues and concerns are resolved

Terms of Reference

Meeting Schedule

- Meetings will be held approximately once every three (3) months
 - Updates may also be provided via email in lieu of an online meeting
- This schedule may be amended in consultation with the CLC

Next Meeting: October 2021 (TBC)

Project Overview

Adam Novack, Waterfront Toronto

Public Consultations to Inform Design Briefs

York + Rees Street Park (318 Queens Quay West) feedback from City of Toronto public consultation

- October 2016
- April 2017

York-Bay-Yonge Construction Liaison Committee (CLC) meeting

- December 13, 2017

Waterfront Toronto Design Review Panel (DRP)

- December 20, 2017

Public Consultation

- January 22, 2018

Round Table session on Park Program

- March 26, 2018

Pop-up Activities at 88 Queens Quay and 1 York

- February 28, 2018
- March 1, 8 & 9, 2018

Public Consultations on Design Proposals

Workshop at Waterfront Neighbourhood Centre with local youth

- April 9, 2018

Public Exhibition of Designs in City Hall Rotunda + Public Survey

- July 4 - 17, 2018

Launch of design competition website and online surveys

- July 5, 2018

Online surveys closed

- July 25, 2018

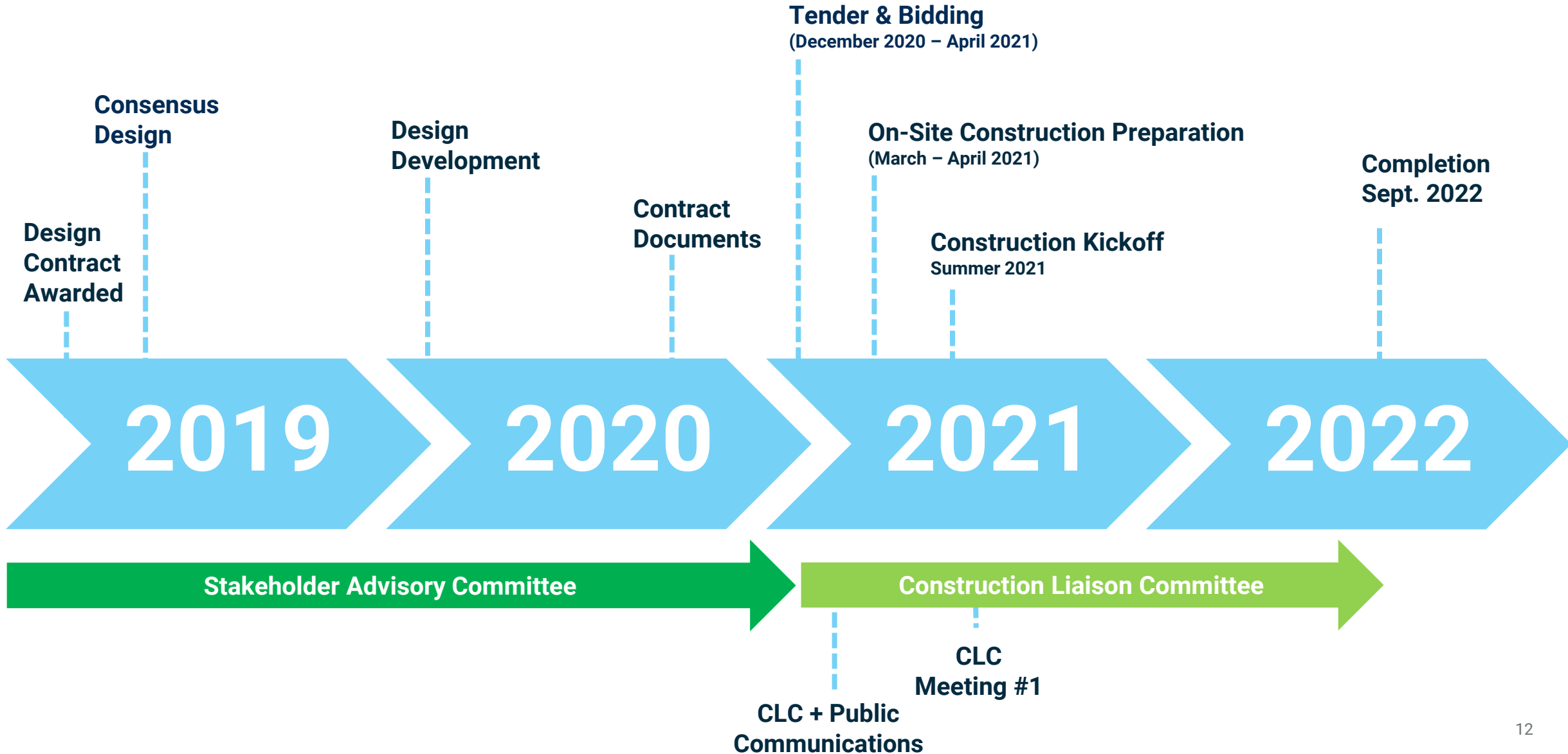
Mini exhibit and kids' activity at Waterfront Neighbourhood Centre

- July 27 - August 5, 2018

Design Competition Public Feedback Report

- Released September 9, 2018

York Street Park Project Timeline





PLAN PROGRESS



SAC#2 - DECEMBER 2019

YORK ST
NOVEMBER 1

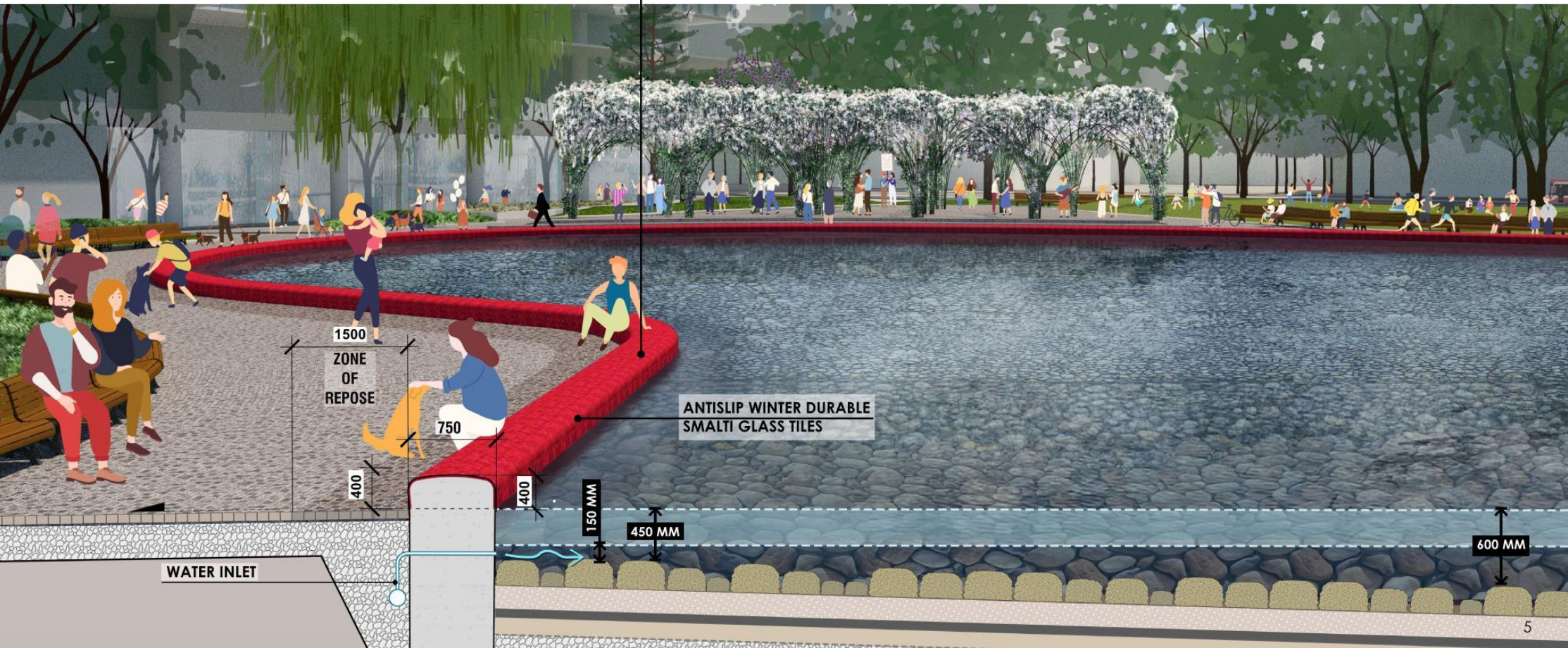
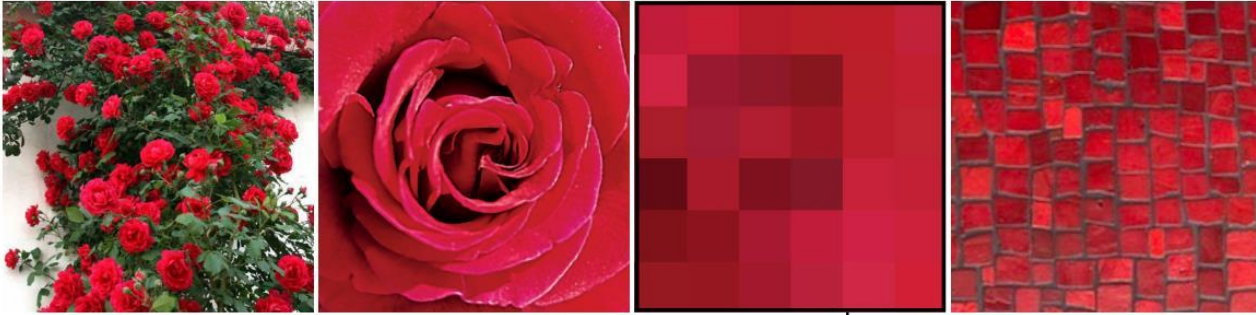


SAC#3 - JANUARY 2021

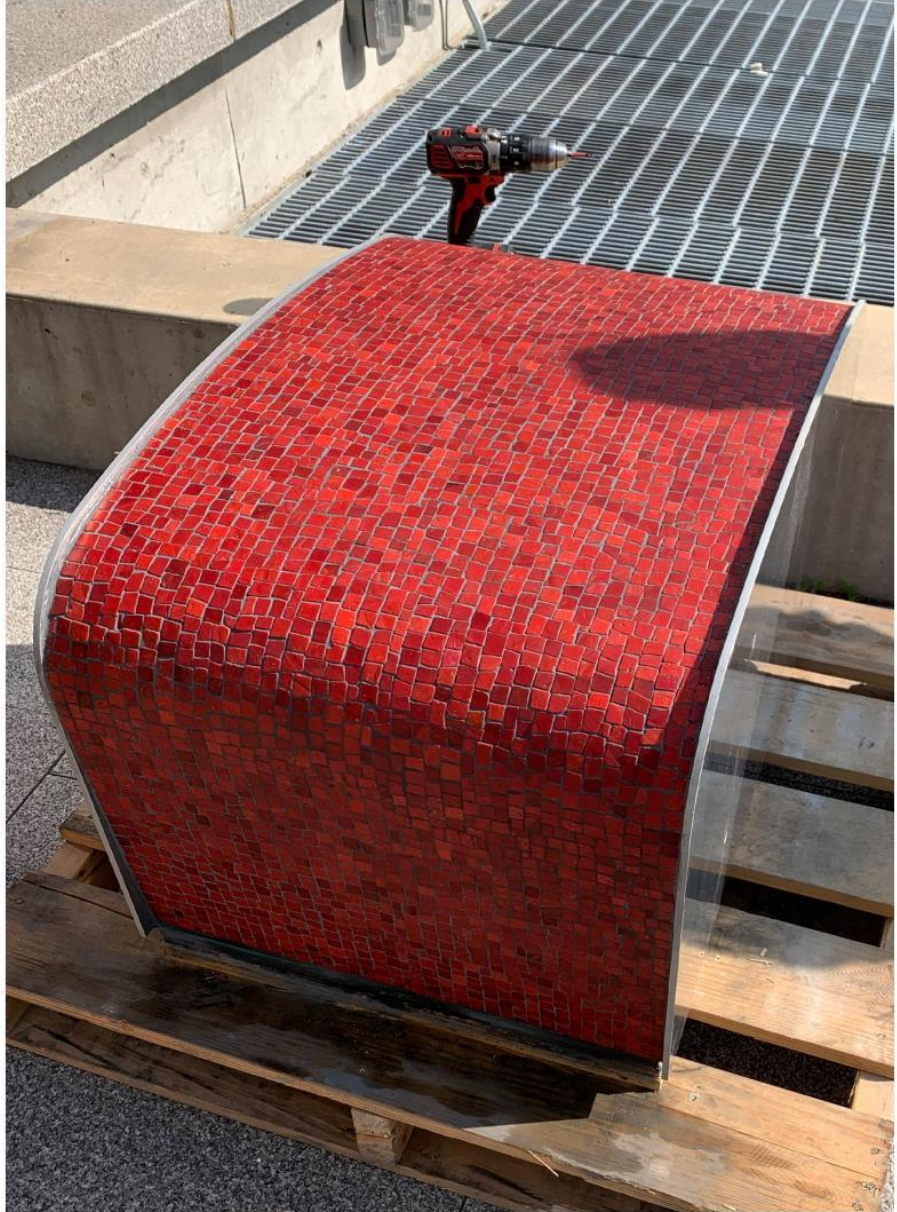
YORK ST
NOVEMBER

1. DOLA
2. Mechanical Building
3. Bikeshare
4. East Entry - Plaza

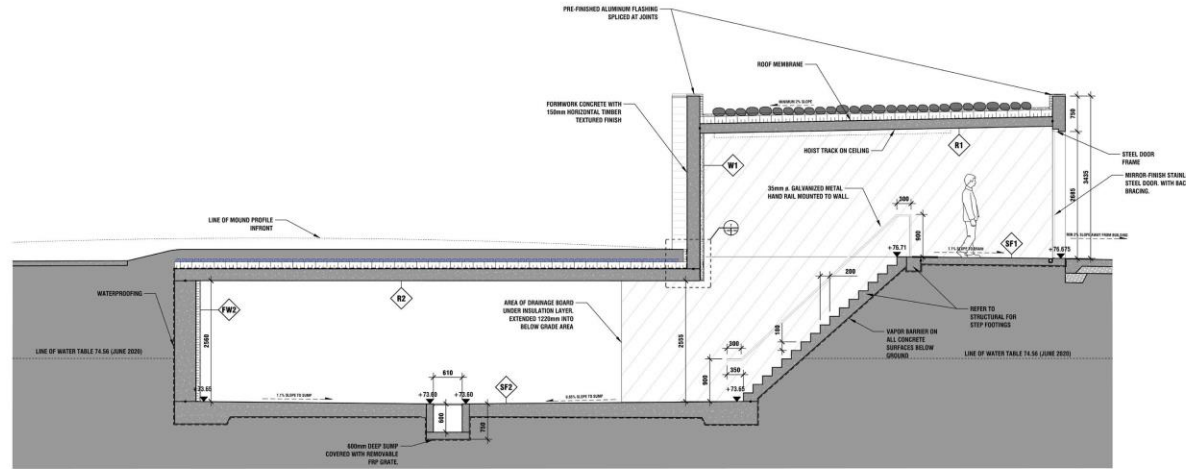
POND EDGE - CONCEPT



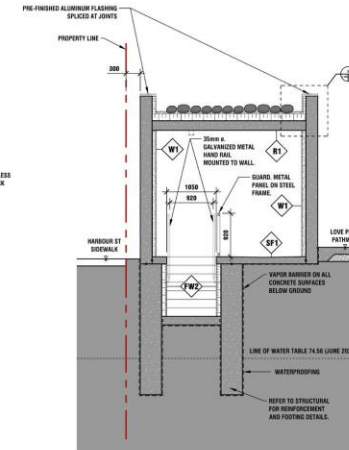
POND EDGE - RED SMALTI GLASS TILE MOCK-UP



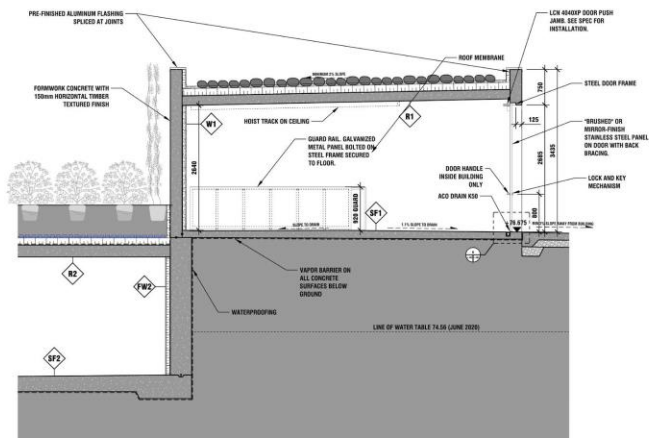
MECHANICAL ROOM



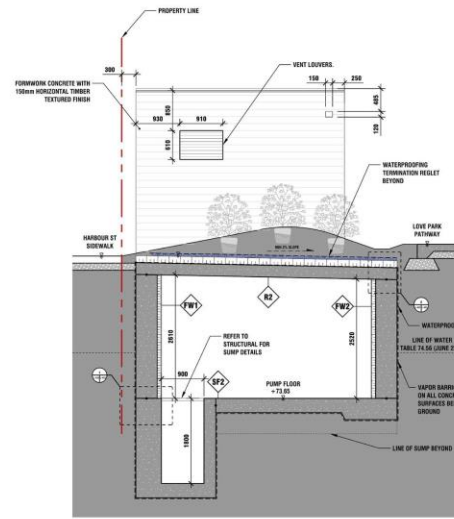
1
MECHANICAL ROOM SECTION
SECTION DETAIL - 1:50
L-481 L-482



4
MECHANICAL ROOM SECTION
SECTION DETAIL - 1:50
L-481 L-482



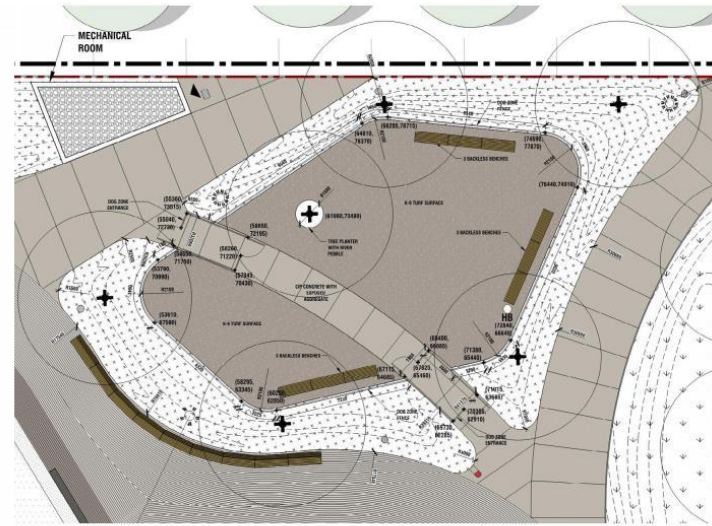
2
MECHANICAL ROOM SECTION
SECTION DETAIL - 1:50
L-481 L-482



3
MECHANICAL ROOM SECTION
SECTION DETAIL - 1:50
L-481 L-482

13

FENCED DOG AREA



DOG TURF



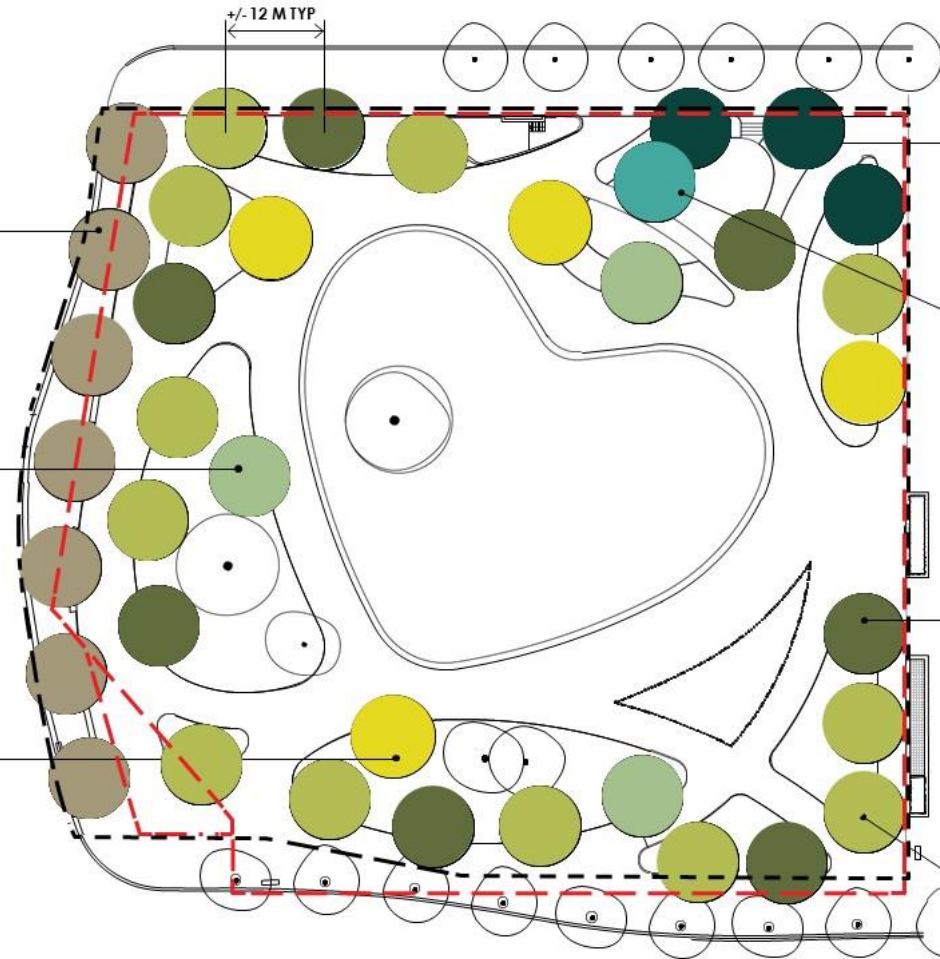
FOREVERLAWN K9 TURF - AITKEN PLACE PARK, TORONTO

37 NEW TREES

REDMOND LINDEN
NATIVE/CULTIVAR
HARDY
(7X)

BLACK WALNUT
NATIVE/CULTIVAR
HARDY
(3X)

**GOLDEN WEeping
WILLOW TREE**
NON NATIVE
MODERATE
(4X)



DAWN REDWOOD
INTRODUCED
MODERATE
(3X)

GINKGO
NON NATIVE
VERY HARDY
(1X)

**AMERICAN ELM
'PRINCETON'**
NATIVE/CULTIVAR
HARDY
(7X)

SILVER MAPLE
NATIVE
VERY HARDY
(12X)

SHRUB COVER LAYOUT

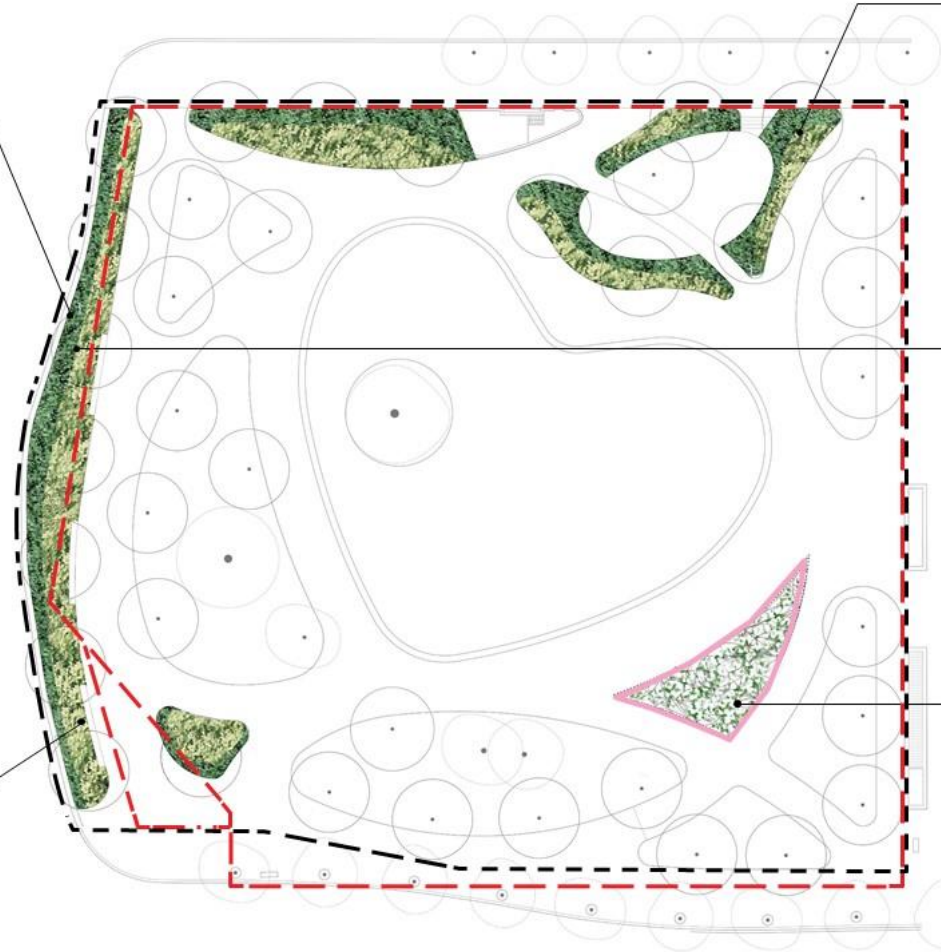
Rhus aromatica (Fragrant Sumach)



Hydrangea arborescens 'Annabelle'



Climbing Hydrangea



Euonymus fortunei 'Coloratus' 70%



Euonymus fortunei 'Emerald Gaiety' 30%

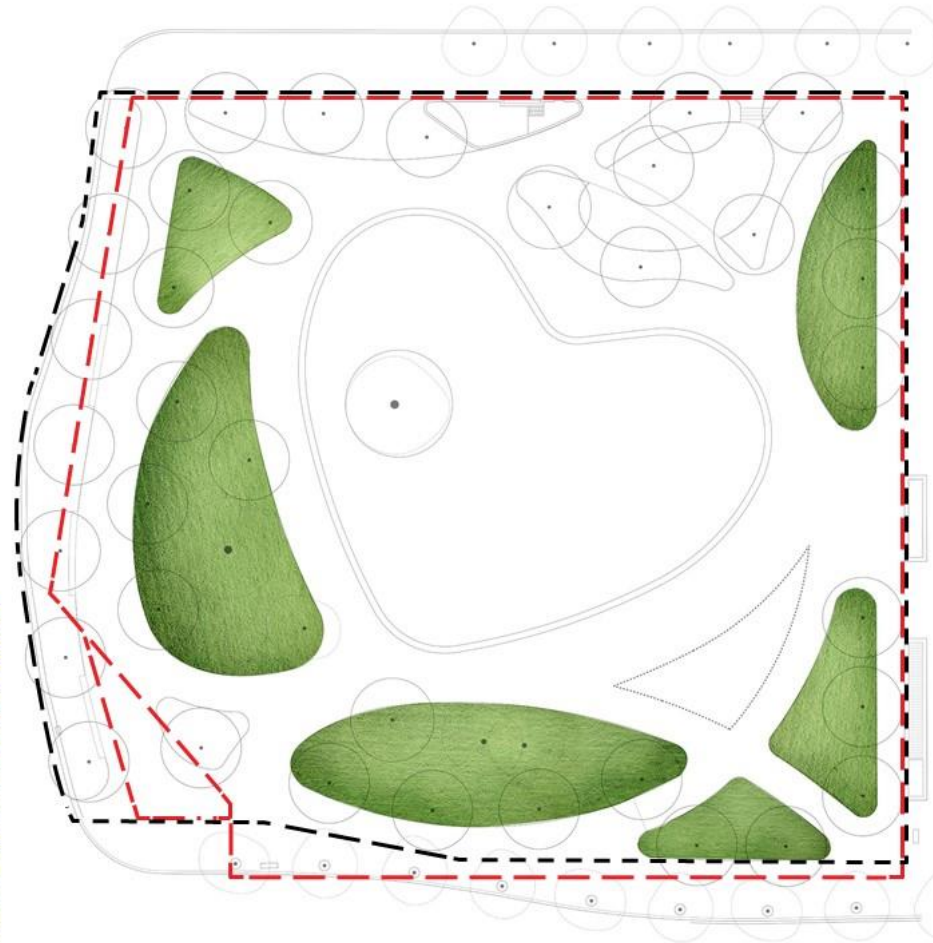


PAVILION

Frutescens alba (White American Wisteria)
OR - Wisteria sinensis 'Alba' (White Chinese Wisteria)



LAWN LAYOUT



A GREEN OASIS



TRELLIS VINE PLANTING



THINGS TO DO IN LOVE PARK

PASSIVE PROGRAMMING

- people watching
- socially distanced meetups
- sight seeing & taking photos
- picnicking & lunch-eating
- walking & relieving your dog
- informal childrens play
- reading
- relaxing & lying on the grass
- strolling & jogging
- buskers and shows
- pre-game gatherings
- community events & block parties
- small concerts & shows
- civic happenings
- festival venue for Nuit Blanche & Luminato...
- marriage proposal
- tinder/grindr/pokemon-go meet-up
- social media scrolling
- small model boating
- ...

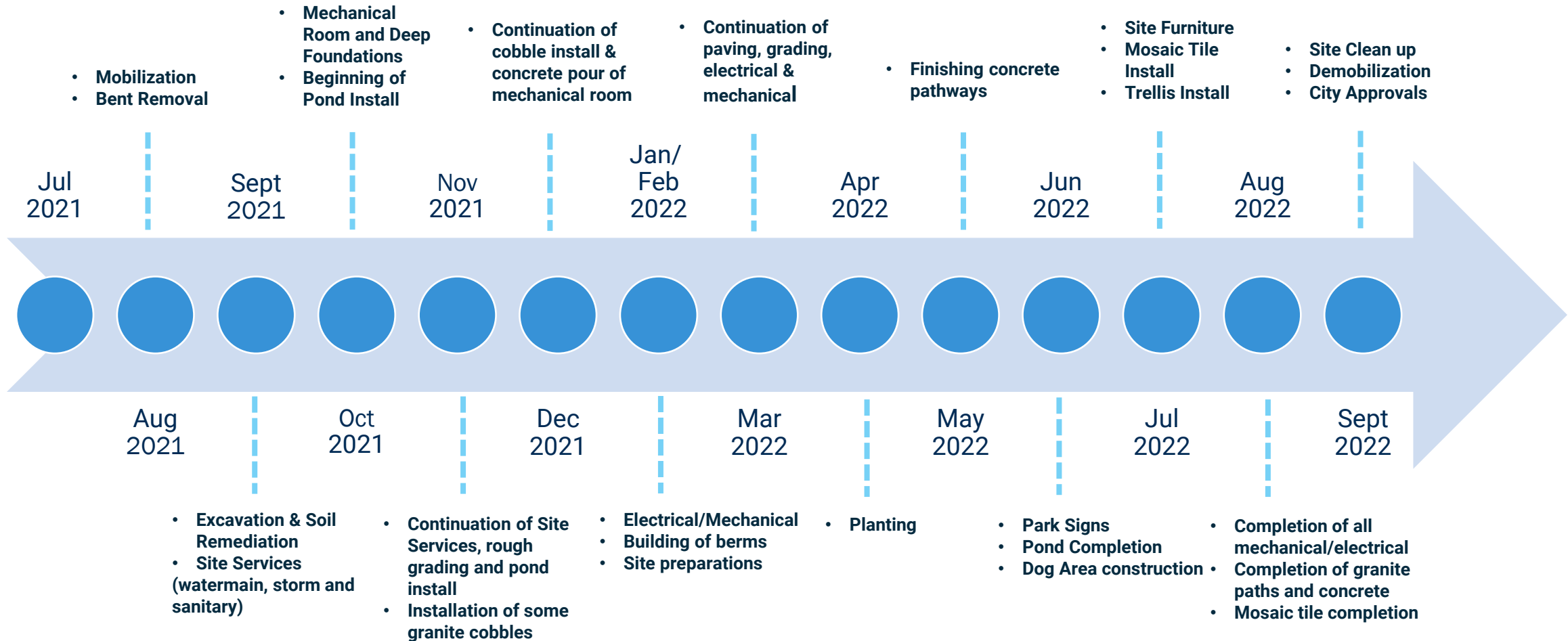




Construction Schedule + Construction Mitigation Plan

Alexia MacLeod, Somerville Construction

Construction Schedule – what to expect



*Note: Schedule only shows certain milestones (start date and/or completion) and is subject to change

Construction Impact Mitigation Plan

What are some of the impact we're planning for?

- Dust control
- Noise Control
- Site Access (Gate Location)
- Parking Impact
- Lane/Sidewalk Closures
- Safety and Signage
- Demolition Work
- Communication

Construction Impact Mitigation Plan

...continued

Dust control:

- Dust control fabric has been installed on hoarding and fencing
- During demolition tasks, water will be sprayed on surfaces to prevent dust from becoming airborne

Noise Control:

- All work generating noise will be done during by-law permitted hours (7am-7pm Monday-Friday)
- *If* work is required on a Saturday, hours permitted by the by-law are 9am-5pm

Site Access (Gate Location):

- Site access is from York Street
- A flag-person will be available to direct traffic, when required

Parking Impact:

- Only construction vehicles are permitted on site. All personal vehicles will be parked off site
- All construction delivery vehicles will enter through York Street access. Frequency and time of day will depend on tasks being performed
- All construction vehicles will be directed in and out of site by a flag person

Construction Impact Mitigation Plan

...continued

Lane/Sidewalk Closures:

- York Street Sidewalk:
 - East sidewalk at York Street between Queens Quay and Harbour Street will be closed to pedestrian passage during construction (Right-of-way permit to be approved by the City)
 - Pedestrians will be re-routed to the sidewalk on the west side of York Street
- Required safety and directional signage will be installed

Safety and Signage

- Hoarding (fencing) is equipped with all required construction signage (for example: *PPE, DO NOT ENTER, SITE UNDER SURVEILLANCE, etc.*)
- Security cameras and motion detectors are required for all active job sites to prevent unauthorized entry and vandalism.
 - Cameras are directed into the site only and do not monitor the surrounding sidewalks or buildings
 - A siren deterrent will sound if security is breached after hours (7pm-7am). Somerville Construction and alarm company will be notified immediately to access the site through the onsite camera system and assess the situation. Toronto Police will only be dispatched if deemed necessary.

Construction Impact Mitigation Plan

...continued

Demolition Work

- Once the Construction Environment Management Plan (CEMP) is approved, the first task is to remove the existing bents.
- Bent removal will be completed over an approximate one-week period (weather dependent).
- All material will be removed off site.
- Demolition areas closest to public Right-of-way will be protected by using steel netting to prevent debris from going over the construction hoarding.
- If required, a flag-person will re-direct pedestrians to a safer area during the removals.

Communication

- Construction notices will be provided to the CLC and made available to any member of the public on Waterfront Toronto's website and shared via Waterfront Toronto's newsletter and on social media
- Regular updates to the CLC
- Questions, comments and concerns should be sent to info@waterfronttoronto.ca

Discussion + Feedback

All

Next Meeting of the CLC

October 2021 – *Date TBC*

Thank you.

info@waterfrontoronto.ca

Waterfront Toronto
20 Bay Street, Suite 1310
Toronto, ON M5J 2N8
www.waterfrontoronto.ca

Join Waterfront Toronto on social media

