



Legacy Art Project

Schematic Design

September 22nd, 2021

Project Description & Background

Project Background

- The Legacy Art Project is a citizen-funded public space initiative dedicated to the spirit of courage, determination, and action that Terry Fox embodied.
- This project entitled, "We are Shaped by the Obstacles We Face," is a permanent, integrated, public art, and landscape architecture installation that strives to convey Terry Fox's optimism in the face of challenge in throughout the Marathon of Hope in an experiential way.
- Art piece selected through an open call competition and a jury selection process. Art piece is not here for Panel review.
- Surrounding landscape was designed in concert with the art piece and part of what was selected by the jury. The landscape concept is not for Panel review.
- Panel review should focus on ensuring the landscape design supports and reinforces the artistic conception of the project and create a great public space.

Design Team

- Lead Artist: Jon Sasaki
- Landscape Architect: DTAH
- Public Art Consultant: Art + Public

Project Update

Legacy Art Project

Proponent: Legacy Art Project Toronto

Design Team: Jon Sasaki, DTAH, Art + Public

Review Stage: Schematic Design

Waterfront Toronto Role

- Delivery Agent
 - Permitting / Surveying
 - Consturction Procurement
 - Construction Delivery
 - Project Handover to EDC / PF&R

Project Timeline

- July 2018 – City Council (Motion of Authorization)
- July 2021 – DRP (Issued ID)
- September 2021 – DRP (Schematic Design)
- November 2021 – DRP (Detailed Design)
- Winter 2021- Tendering
- Spring 2022 - Kickoff Construction
- Summer 2022 – Opening

Site Context

Legacy Art Project

Proponent: Legacy Art Project Toronto

Design Team: Jon Sasaki, DTAH, Art + Public

Review Stage: Schematic Design



Site Context

Legacy Art Project

Proponent: Legacy Art Project Toronto

Design Team: Jon Sasaki, DTAH, Art + Public

Review Stage: Schematic Design



Site Context

Legacy Art Project

Proponent: Legacy Art Project Toronto

Design Team: Jon Sasaki, DTAH, Art + Public

Review Stage: Schematic Design



Site Context

Legacy Art Project

Proponent: Legacy Art Project Toronto

Design Team: Jon Sasaki, DTAH, Art + Public

Review Stage: Schematic Design



Site Context

Legacy Art Project

Proponent: Legacy Art Project Toronto

Design Team: Jon Sasaki, DTAH, Art + Public

Review Stage: Schematic Design



Project Approval Stage

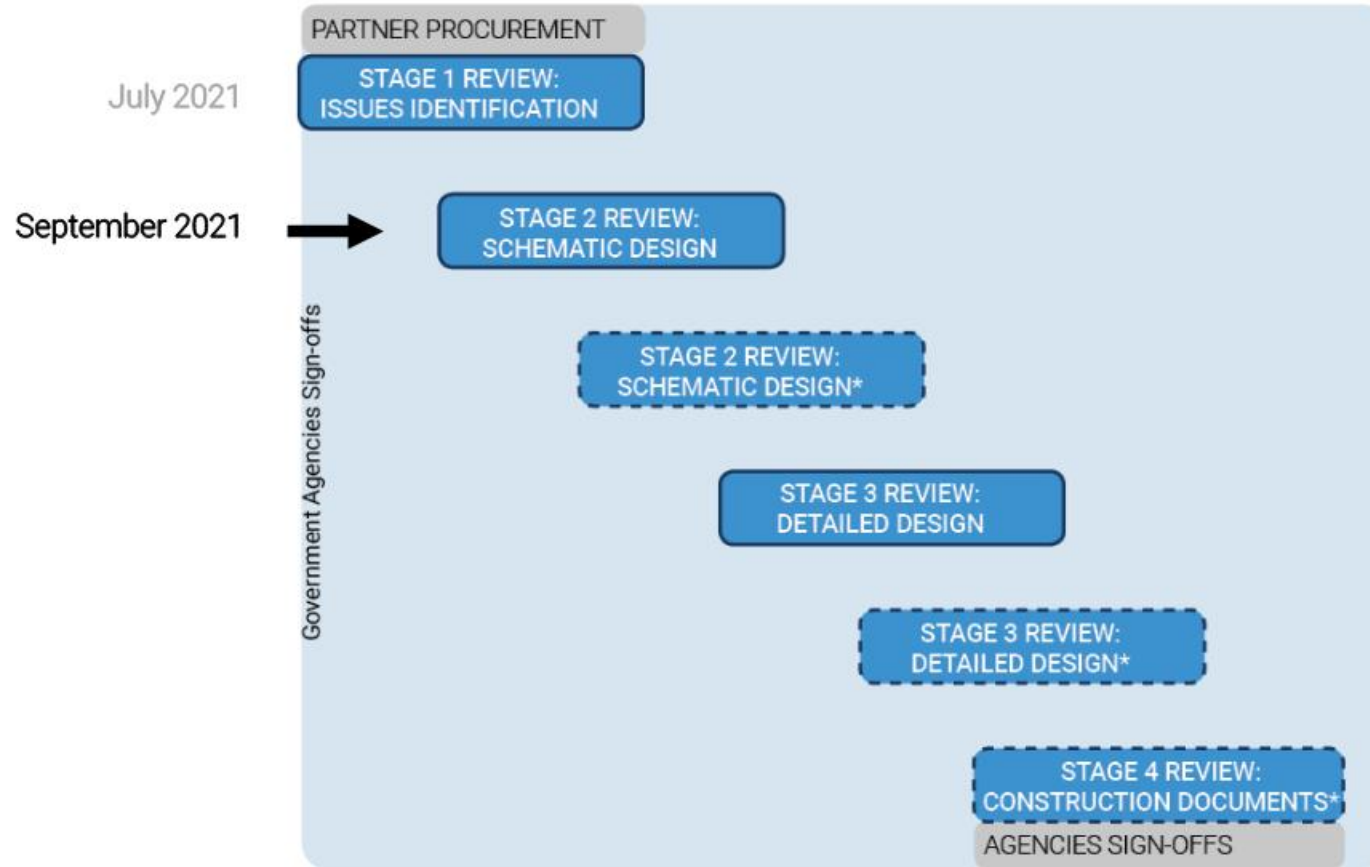
DRP Stream 2: Public land

Legacy Art Project

Proponent: Legacy Art Project Toronto

Design Team: Jon Sasaki, DTAH, Art + Public

Review Stage: Schematic Design



Recap from July 2021

Issues Identification Consensus Comments

Legacy Art Project
Proponent: Legacy Art Project Toronto
Design Team: Jon Sasaki, DTAH, Art + Public
Review Stage: Schematic Design

General

- Appreciated the concept of the journey of discovery, message of hope, and working through obstacles in life.
- The Panel is hopeful that the project will capture the passion of Terry Fox and pass it onto future generations.
- The geography during Terry's run is an important element, consider emphasizing a wilder landscape design in the overall concept to reflect the terrain he ran through.
- Ensure the notion of meandering and facing obstacles is very strong throughout the experience of the project.

Landscape

- Provide more images, perspectives, and diagrammatic studies for **composing the different elements that are being explored** at the next review.
- Ensure the Queens Quay entrance is very welcoming and draws in many visitors, **consider a more visual and public facing entrance**, i.e. wider opening, landscape framing, etc.
- **Consider seasonality to ensure the project is activated in winter months**, provide this information at the next review.
- Suggestion to engage the community to look after the work and ensure there is a long-term maintenance plan.
- The moment where Terry's silhouette comes together for the visitor is very important, **consider articulating that moment through the landscape design to ensure it is celebrated and well signified** to the public.
- Various **suggestions on plant species selection**:
 - Avoid decorative grasses
 - Consider rougher/ wilder/ more resilient plant palette
 - Consider local and native species
- Consider utilizing low carbon concrete for the foundations to substantially improve the carbon footprint of the project.

Areas for Panel Consideration

Waterfront Toronto

- Does the updated landscape design address the various site edges and interfaces with adjacent public realm?
 - Access to the project from Queens Quay
 - Transition towards the south lawn
 - Topography as it relates to the east and west entrances
- Is the updated signage strategy well integrated with the context?
- Do the updated tree and plant species support a successful landscape public realm?

Areas for Panel Consideration

Parks, Forestry & Recreation

- Assess the pathway width and confirm that AODA requirements at the pinch points adjacent to the art pieces are addressed
- The grading and drainage for the pathway will have to be carefully resolved through the detailed design to make sure that any surface drainage from the abutting landforms is conveyed off the pathway;
- The landscape design is subject to review and approval process with the City.
- Planting Strategy may impact the views of the artwork so consideration of this is important, i.e. is the design intent to have unobstructed views from Queens Quay?

We Are Shaped by the Obstacles We Face **by Jon Sasaki and DTAH**

A Public Art + Landscape Project Inspired by Terry Fox on Toronto's Waterfront,
Presented by The Legacy Art Project

DRAFT



ART + PUBLIC UnLtd

Jon Sasaki

dtah

What we heard...

The updated landscape scheme includes:

- More resilient planting strategy
- Landscape topographic strategy that enforces the notion of obstacles
- More visual public facing entrance on Queens Quay
- More significant plaza /public space at West entry
- Studies, vignettes and perspectives to support different design elements
- Sustainable material selection

Site Context



Site Entry



Revised Entry



Site Entry- Previous Location

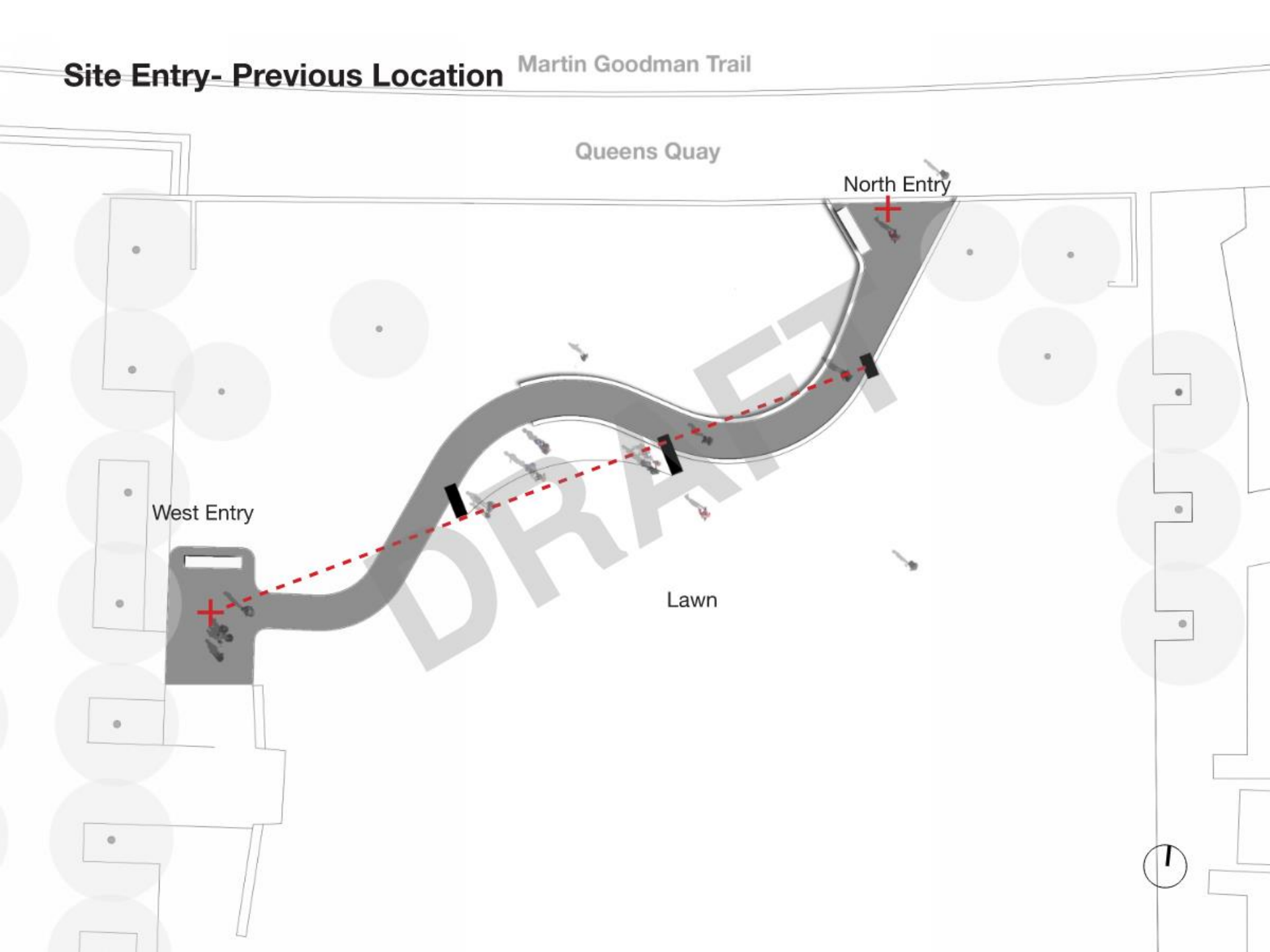
Martin Goodman Trail

Queens Quay

North Entry

West Entry

Lawn



Revised Entry

Martin Goodman Trail

Queens Quay

North Entry

Bronz
Sculpture

Tree to be
Removed

West Entry

Plaza

Pathway

Lawn



Revised Entry

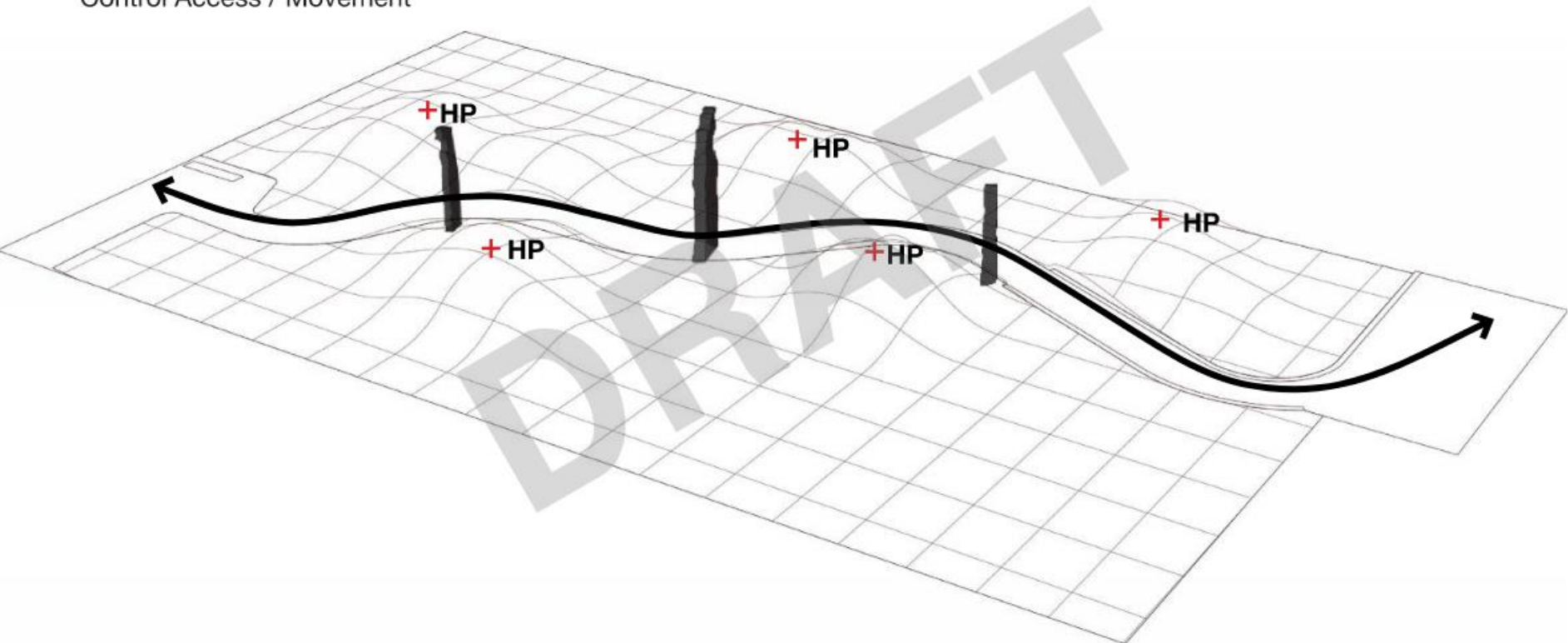


Revised Entry



Landscape Topographic Strategy

Respond to Art
Respond to context
Create and Enhance views
Work with Planting Strategy
Control Access / Movement



Planting Strategy

Spontaneous and Pollinator Species



Planting Strategy

Pollinator Planting



Yarrow



Purple Milkweed



Smooth Aster



Wild White Indigo



Purple Coneflower



Wild Geranium



Black Eyed Susan



Bee Balm



Joe Pye Weed



Wood Sage

Spontaneous Planting



Goldenrod



Common Boneset



Chicory



Tufted Lovegrass



Queen Anne's Lace



Common Milkweed



Evening Primrose

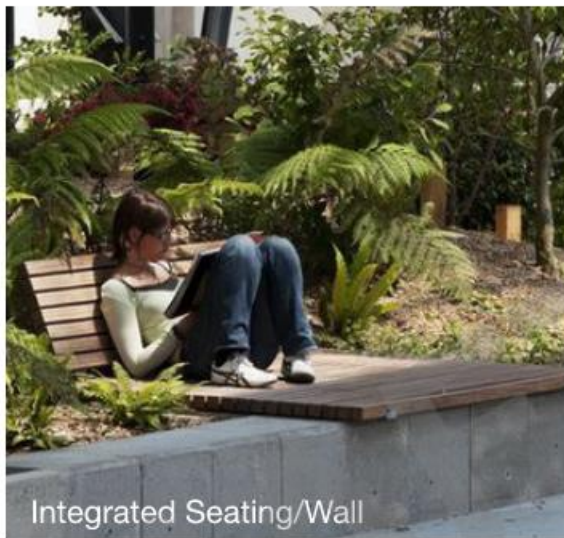


Green Foxtail

Material Palette



Granite Off Cuts from Quebec



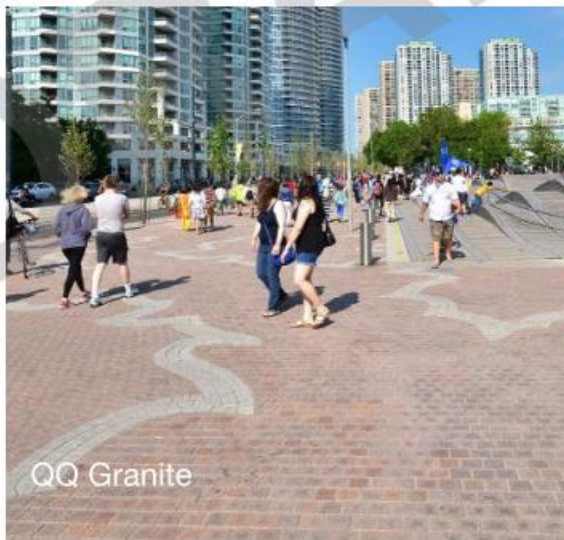
Integrated Seating/Wall



Upcycled Wood



Hight Albedo Asphalt Coating to reduce UHI



QQ Granite

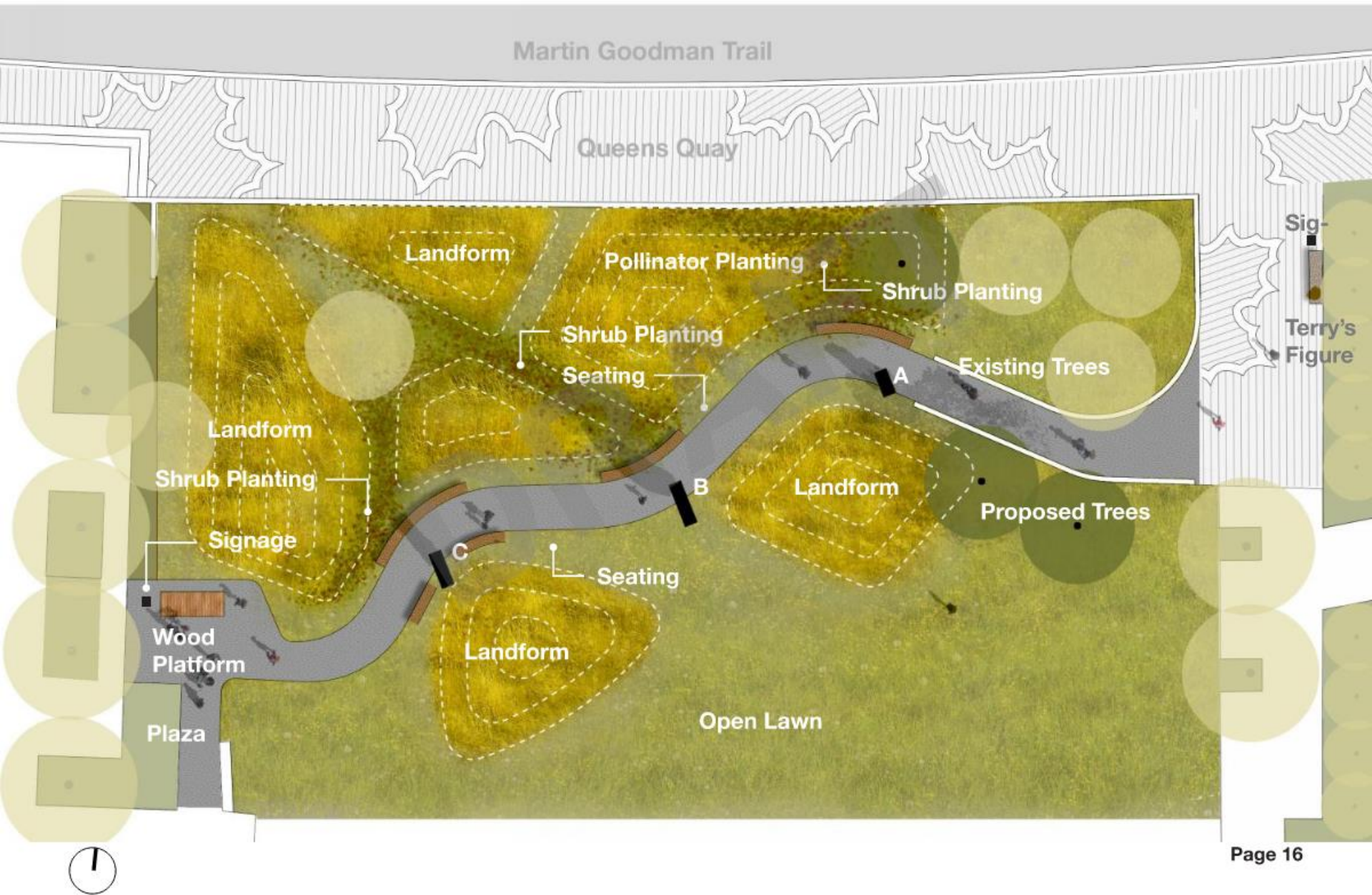


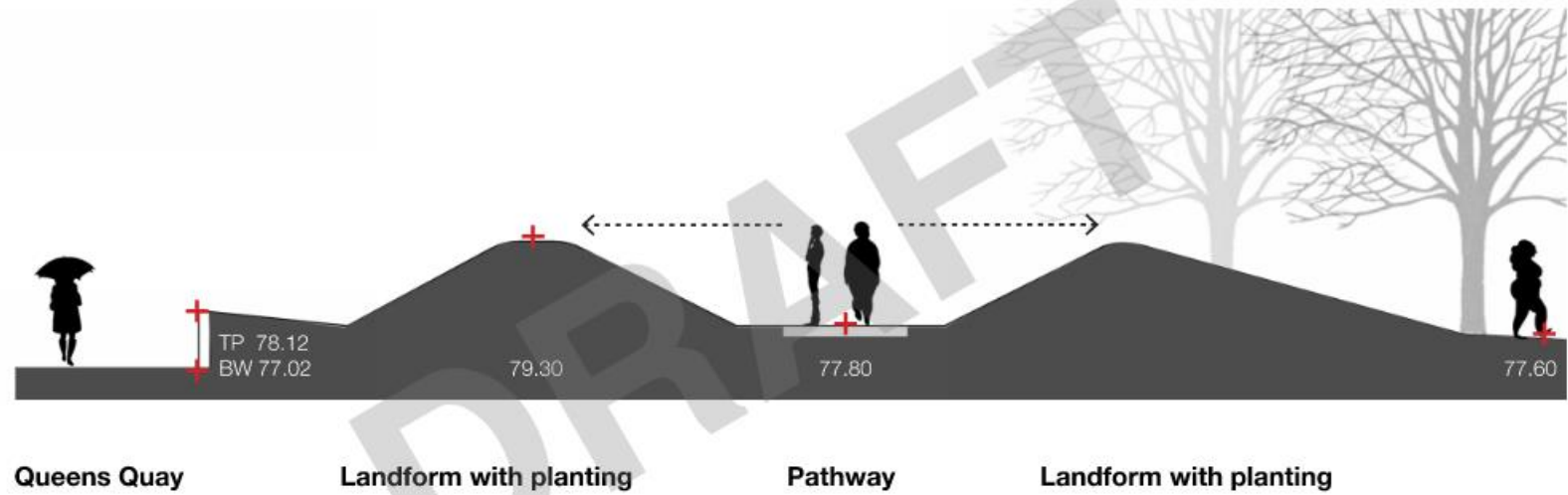
Sustainable Wood

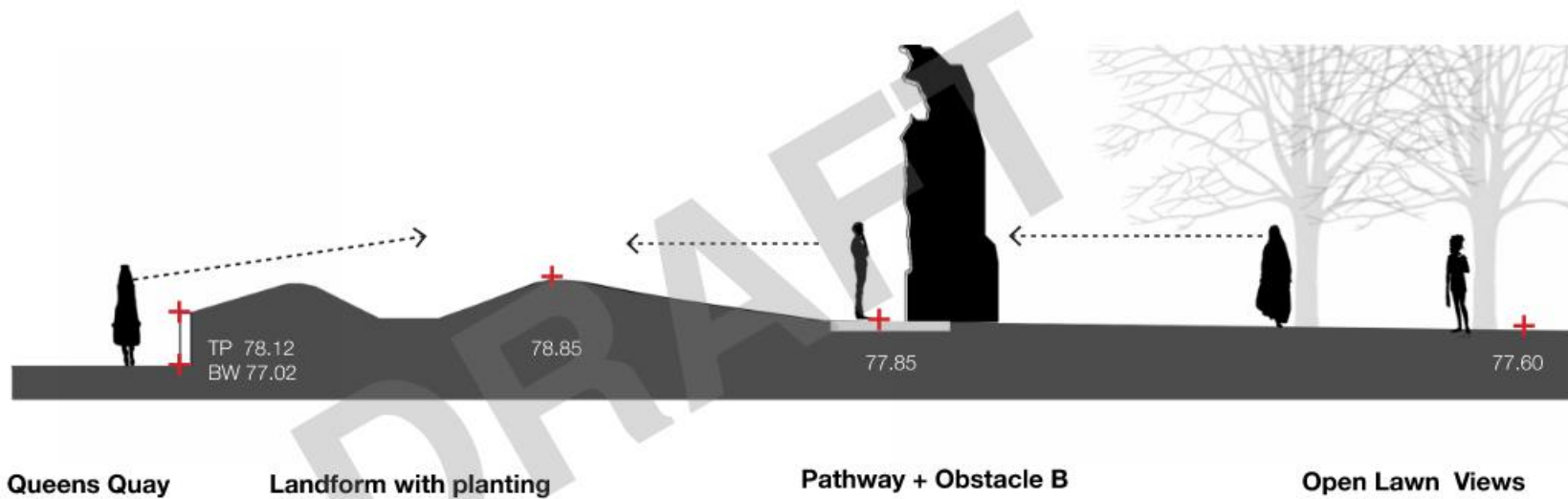
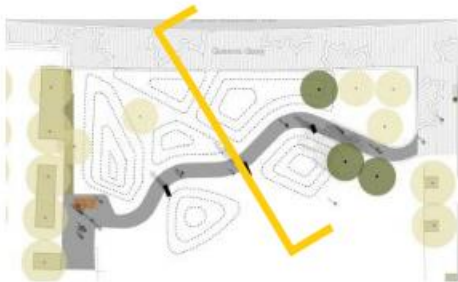
Lighting



Site Plan









TP 78.12
BW 77.09

79.30

78.00

79.00

77.80

Queens Quay

Landform with planting

Pathway + Obstacle C

Landform with planting

Open Lawn







Thank you.