



WATERFRONToronto

Port Lands Flood Protection

SAC Kick-off Meeting

3/7/2018

Agenda

1. Introductions
2. SAC Terms of Reference
3. Project background
4. Design update: parks
5. Design update: roads and bridges
6. Summary of feedback from February 22 community consultation
7. Next steps: topics to discuss at future meetings
8. Questions and comments

SAC Terms of Reference

Members

- Project Team: Waterfront Toronto, the City of Toronto, partner agencies, project designers, consultants
- Interested and affected stakeholders and organizations: community at large, businesses, residents, existing and future users of the Port Lands
- Membership in the SAC is for the duration of the project (approximately seven years). Members may request that they be replaced if they're no longer able to serve on the SAC.

SAC Terms of Reference

Mandate

Provide a forum for feedback, guidance and advice to the Project Team at key points during the public consultation process.

- Act as a sounding board for the Project Team to share and discuss ideas and findings
- Provide guidance, critiques and suggestions on proposed design and programming
- Provide a sense of the broader community's reactions and concerns to materials and concepts and explore how these might be addressed
- Communicate the perspectives of members' organizations and constituencies at SAC meetings
- Communicate information about the project and public consultations back to members' organizations and constituencies

The SAC is not intended to address specific property issues or concerns. Consultations with area landowners will be undertaken separately by the Project Team.

SAC Terms of Reference

Work Plan

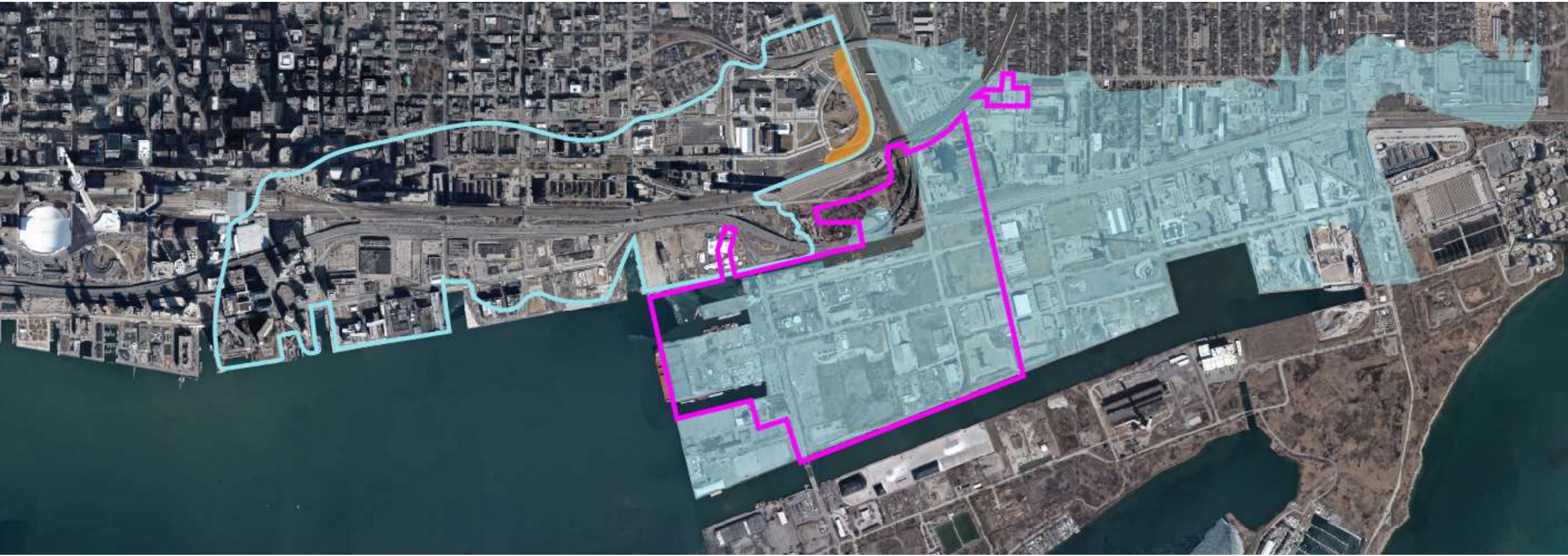
- The Project Team has planned for no more than four meetings with the SAC in 2018, during the detailed design and program planning phases of the project
- The work plan will be revisited annually
- SAC members may be invited to review and comment on presentation materials in advance of public consultation events
- Meetings will generally be held on weekday evenings, with a duration of 2-3 hours

Waterfront Toronto will:

- Provide facilitation for SAC meetings
- Develop meeting agendas in consultation with the Project Team and the SAC
- Keep a record of SAC discussions and prepare and distribute meeting records

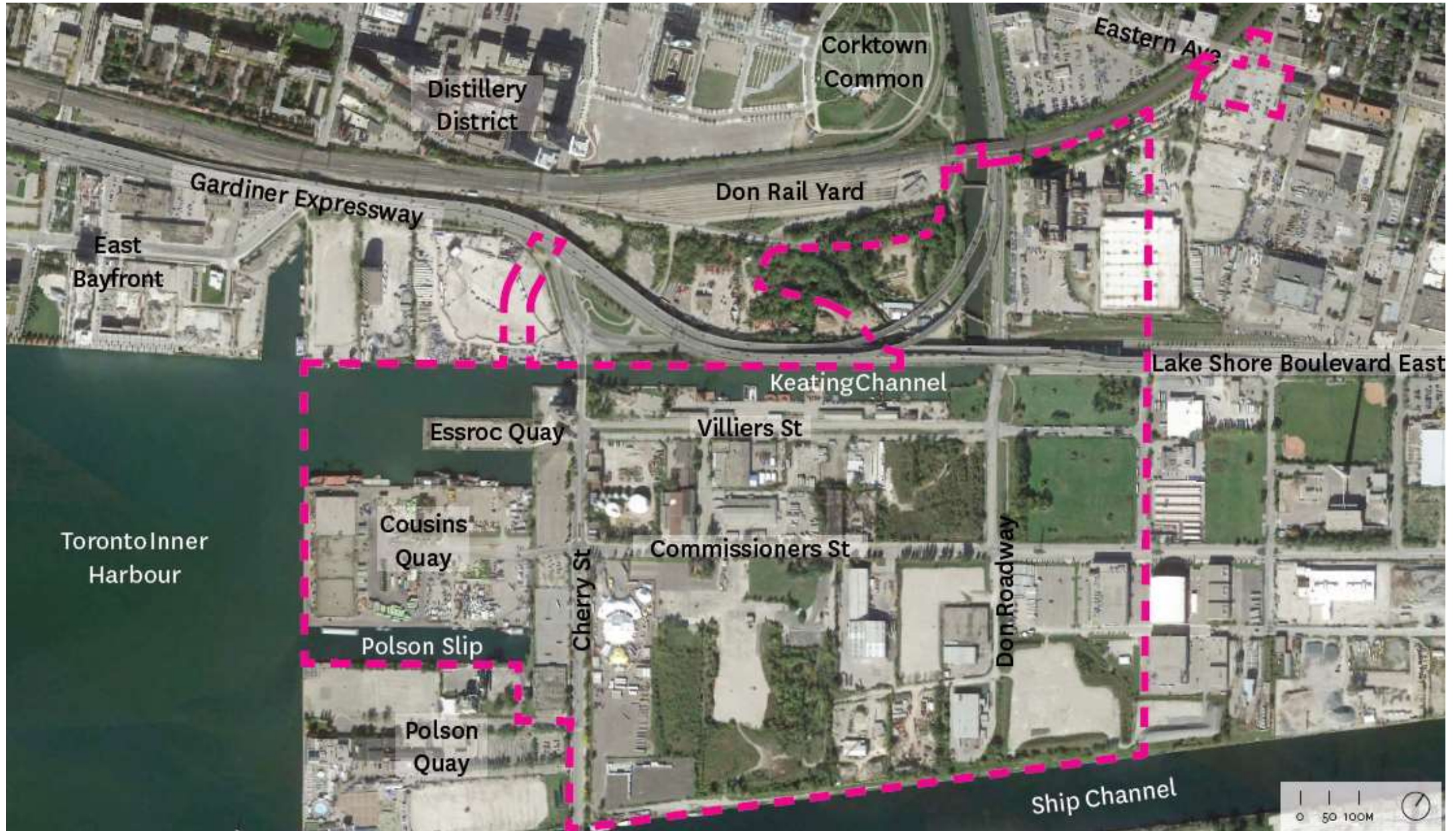
Project Background

Background - Port Lands Flood Protection



-  Flood Plain
-  Flood Protected
-  Flood Protection Landform
-  PLFPEI

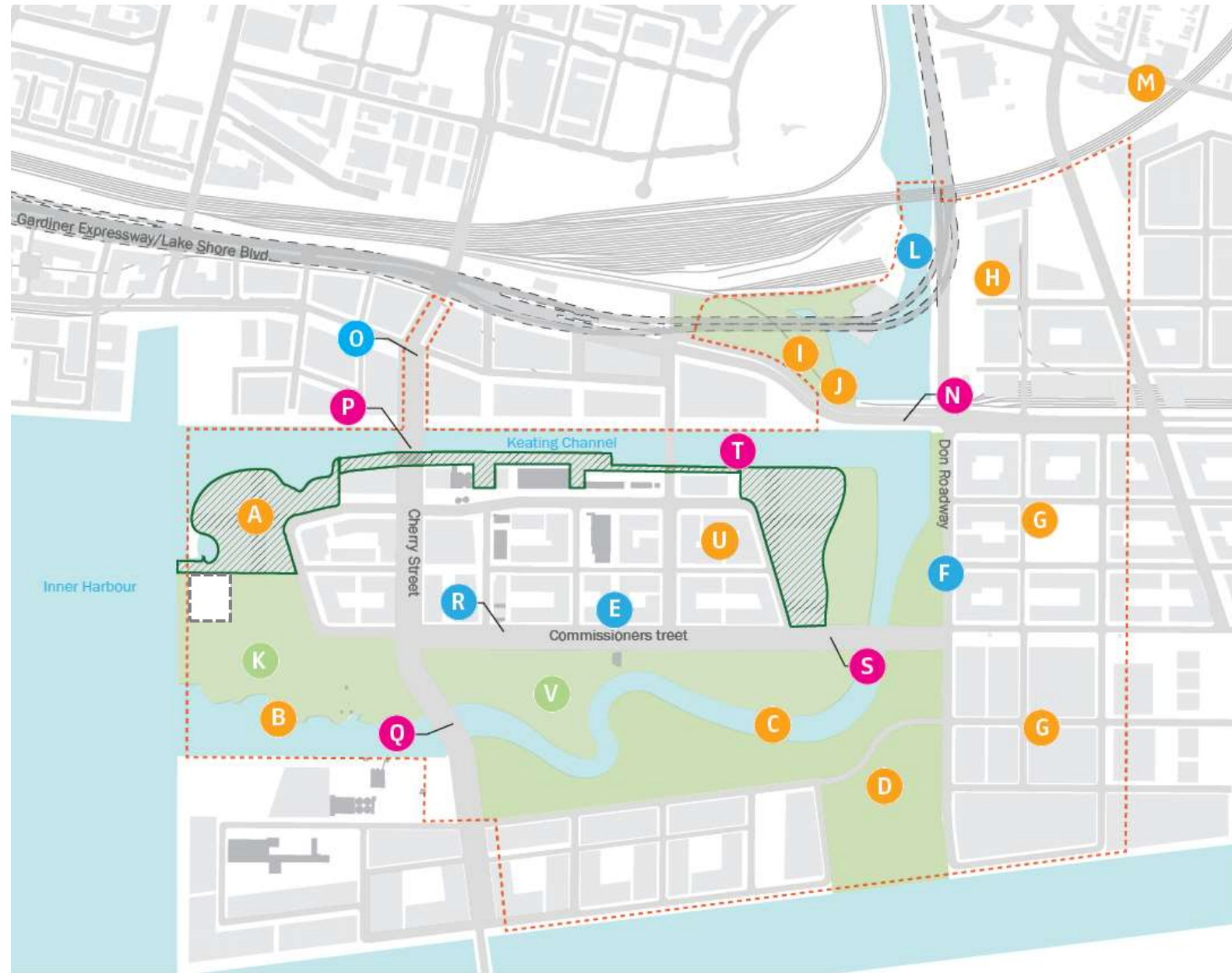
Project Area – Existing Conditions



What are we building?

- A** Cherry Street Stormwater and Lakefilling
 - B** Polson Slip Naturalization
 - C** Flood Protection: River Valley
 - D** Don Greenway (Spillway & Wetland)
 - E** Site Wide Municipal Infrastructure
 - F** Don Roadway
 - G** Don Roadway Valley Wall Feature
 - H** East Harbour Flood Protection Land Form
 - I** Sediment and Debris Management Area
 - J** Flow Control Weirs
 - K** Promontory Park
-
- L** Hydro One Integration
 - M** Eastern Avenue Flood Protection
 - N** Lake Shore Road and Rail Bridge Modifications
 - O** Cherry Street Re-alignment (incl. BRT)
 - P** Cherry Street Bridge North (incl. BRT)
 - Q** Cherry Street Bridge South (vehicular only)
 - R** Commissioners Street
 - S** Commissioners Street Bridge (vehicular only)
 - T** Keating Channel Modifications
 - U** Villiers Island Grading
 - V** River Park

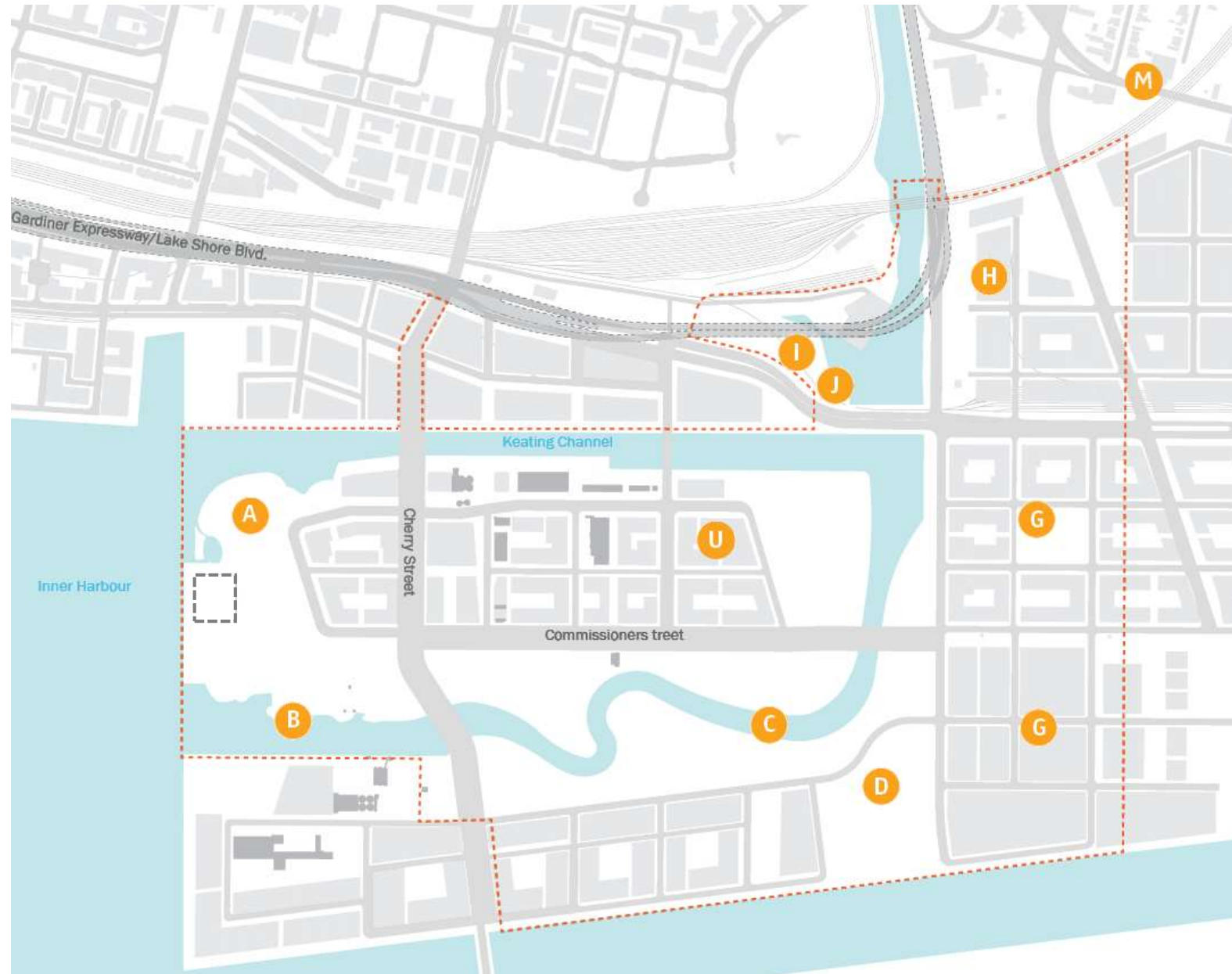
-  Port Lands Flood Protection and Enabling Infrastructure Boundary
-  Parks
-  Roads and Municipal Infrastructure
-  Bridges & Structures
-  Earthworks/Flood Protection
-  Parks not Included in scope



Earthworks/Flood Protection

- A** Cherry Street Stormwater and Lakefilling
- B** Polson Slip Naturalization
- C** Flood Protection: River Valley
- D** Don Greenway (Spillway & Wetland)
- E** Site Wide Municipal Infrastructure
- F** Don Roadway
- G** Don Roadway Valley Wall Feature
- H** East Harbour Flood Protection Land Form
- I** Sediment and Debris Management Area
- J** Flow Control Weirs
- K** Promontory Park
- L** Hydro One Integration
- M** Eastern Avenue Flood Protection
- N** Lake Shore Road and Rail Bridge Modifications
- O** Cherry Street Re-alignment (incl. BRT)
- P** Cherry Street Bridge North (incl. BRT)
- Q** Cherry Street Bridge South (vehicular only)
- R** Commissioners Street
- S** Commissioners Street Bridge (vehicular only)
- T** Keating Channel Modifications
- U** Villiers Island Grading
- V** River Park

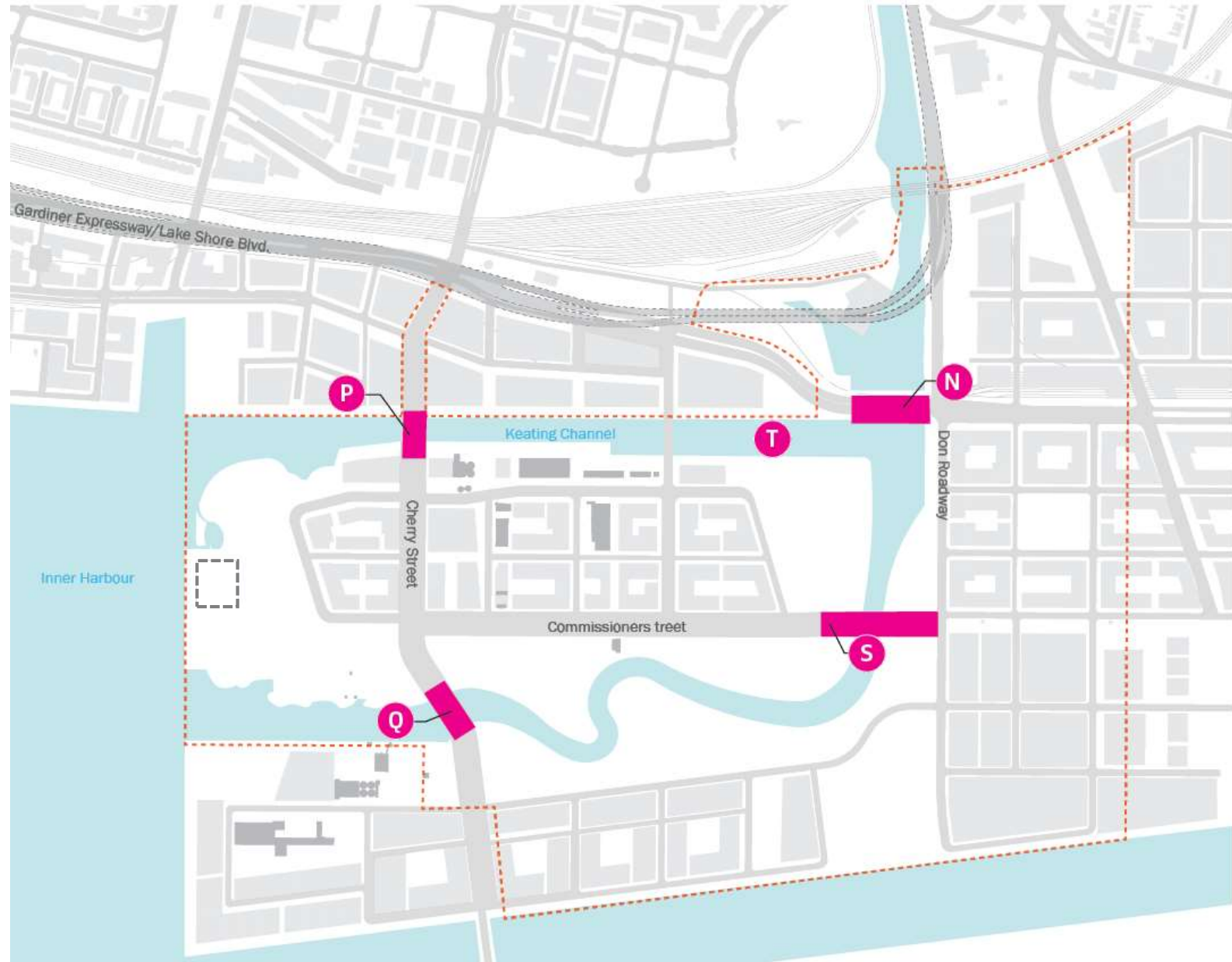
-  Port Lands Flood Protection and Enabling Infrastructure Boundary
-  Parks
-  Roads and Municipal Infrastructure
-  Bridges & Structures
-  Earthworks/Flood Protection



Bridges and Structures

- A Cherry Street Stormwater and Lakefilling
- B Polson Slip Naturalization
- C Flood Protection: River Valley
- D Don Greenway (Spillway & Wetland)
- E Site Wide Municipal Infrastructure
- F Don Roadway
- G Don Roadway Valley Wall Feature
- H East Harbour Flood Protection Land Form
- I Sediment and Debris Management Area
- J Flow Control Weirs
- K Promontory Park
- L Hydro One Integration
- M Eastern Avenue Flood Protection
- N Lake Shore Road and Rail Bridge Modifications
- O Cherry Street Re-alignment (incl. BRT)
- P Cherry Street Bridge North (incl. BRT)
- Q Cherry Street Bridge South (vehicular only)
- R Commissioners Street
- S Commissioners Street Bridge (vehicular only)
- T Keating Channel Modifications
- U Villiers Island Grading
- V River Park

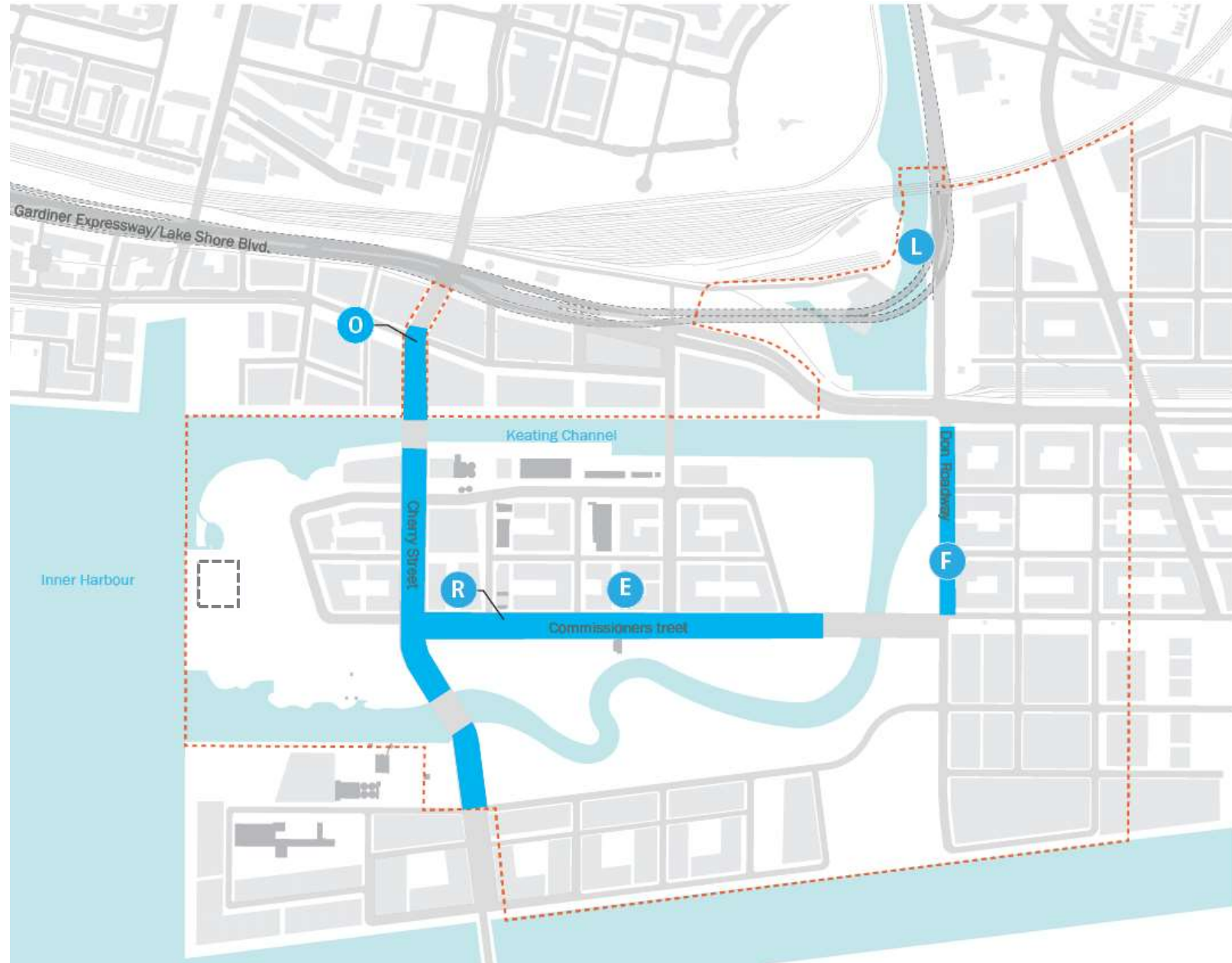
- Port Lands Flood Protection and Enabling Infrastructure Boundary
- Parks
- Roads and Municipal Infrastructure
- Bridges & Structures
- Earthworks/Flood Protection



Roads and Municipal Services

- A** Cherry Street Stormwater and Lakefilling
 - B** Polson Slip Naturalization
 - C** Flood Protection: River Valley
 - D** Don Greenway (Spillway & Wetland)
 - E** **Site Wide Municipal Infrastructure**
 - F** **Don Roadway**
 - G** Don Roadway Valley Wall Feature
 - H** East Harbour Flood Protection Land Form
 - I** Sediment and Debris Management Area
 - J** Flow Control Weirs
 - K** Promontory Park
-
- L** **Hydro One Integration**
 - M** Eastern Avenue Flood Protection
 - N** Lake Shore Road and Rail Bridge Modifications
 - O** **Cherry Street Re-alignment (Incl. BRT)**
 - P** Cherry Street Bridge North (Incl. BRT)
 - Q** Cherry Street Bridge South (vehicular only)
 - R** **Commissioners Street**
 - S** Commissioners Street Bridge (vehicular only)
 - T** Keating Channel Modifications
 - U** Villiers Island Grading
 - V** River Park

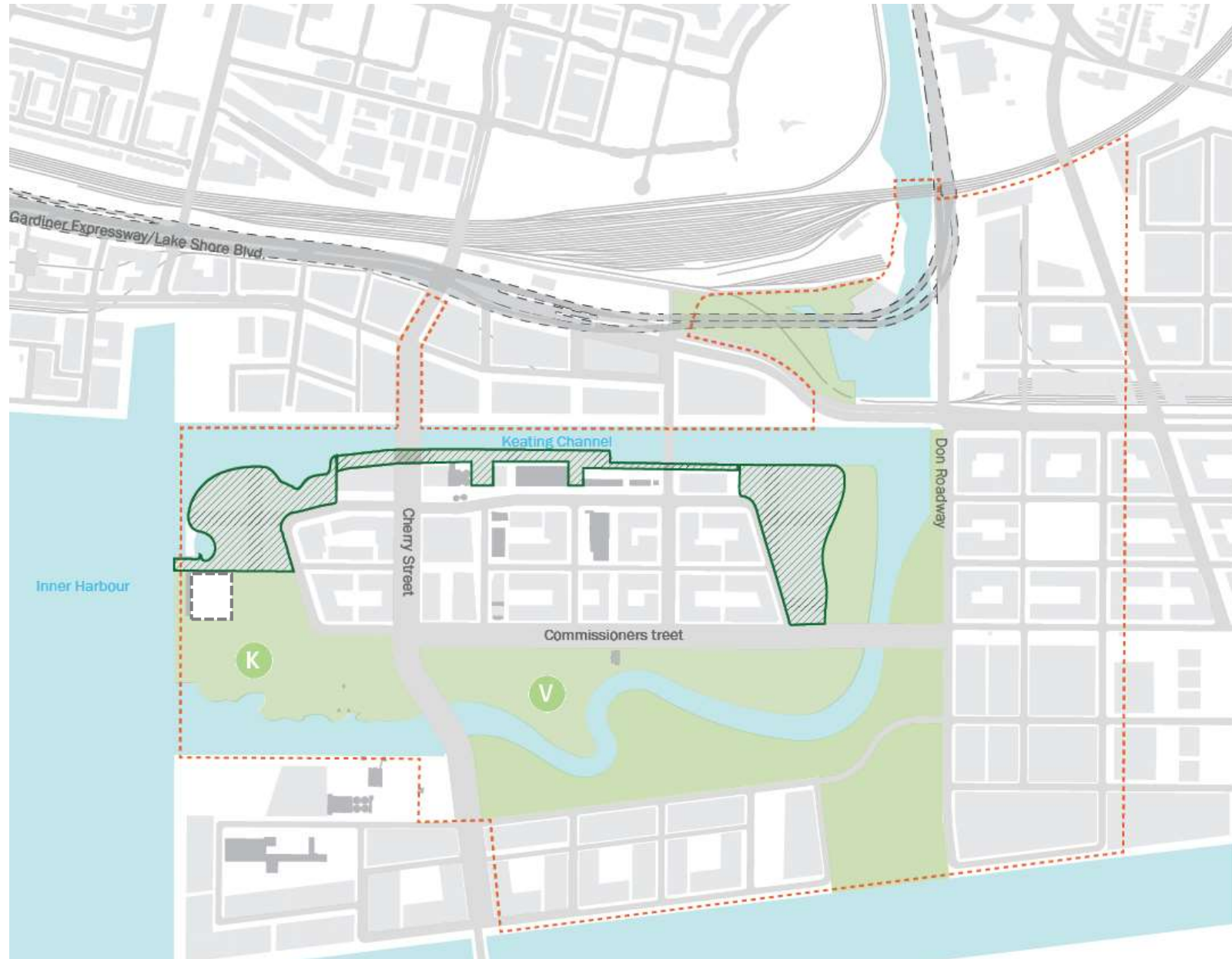
-  Port Lands Flood Protection and Enabling Infrastructure Boundary
-  Parks
-  Roads and Municipal Infrastructure
-  Bridges & Structures
-  Earthworks/Flood Protection



Parks

- A** Cherry Street Stormwater and Lakefilling
- B** Polson Slip Naturalization
- C** Flood Protection: River Valley
- D** Don Greenway (Spillway & Wetland)
- E** Site Wide Municipal Infrastructure
- F** Don Roadway
- G** Don Roadway Valley Wall Feature
- H** East Harbour Flood Protection Land Form
- I** Sediment and Debris Management Area
- J** Flow Control Weirs
- K** Promontory Park
- L** Hydro One Integration
- M** Eastern Avenue Flood Protection
- N** Lake Shore Road and Rail Bridge Modifications
- O** Cherry Street Re-alignment (incl. BRT)
- P** Cherry Street Bridge North (incl. BRT)
- Q** Cherry Street Bridge South (vehicular only)
- R** Commissioners Street
- S** Commissioners Street Bridge (vehicular only)
- T** Keating Channel Modifications
- U** Villiers Island Grading
- V** River Park

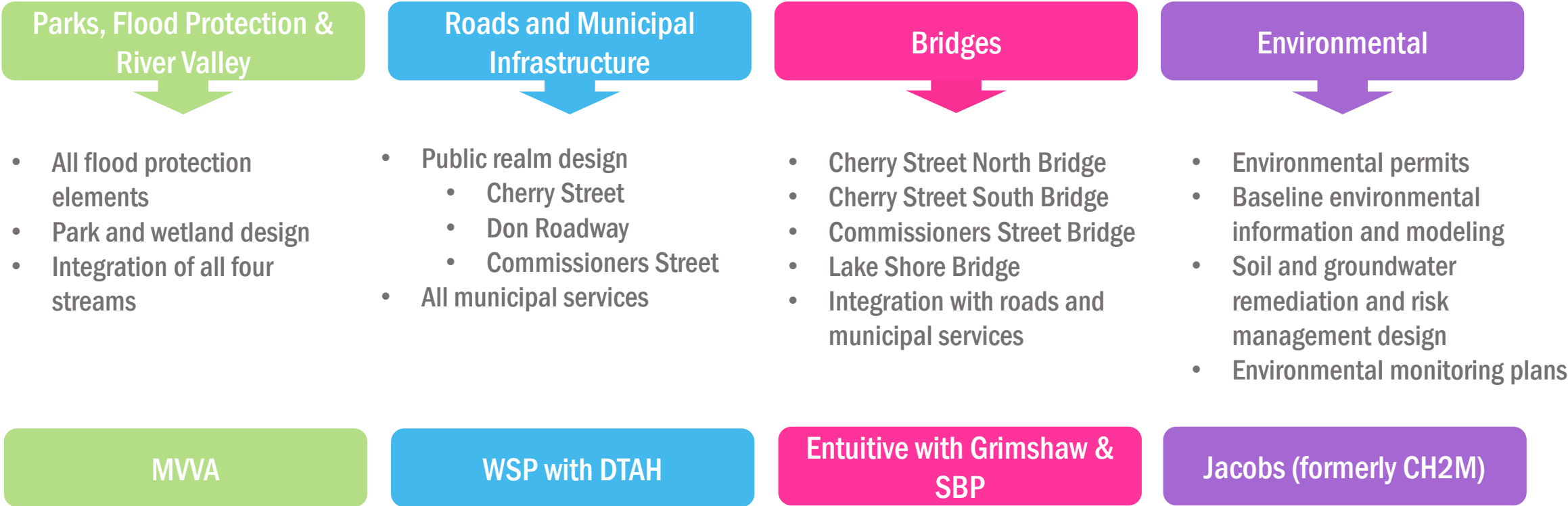
-  Port Lands Flood Protection and Enabling Infrastructure Boundary
-  Parks
-  Roads and Municipal Infrastructure
-  Bridges & Structures
-  Earthworks/Flood Protection
-  Parks not included in scope



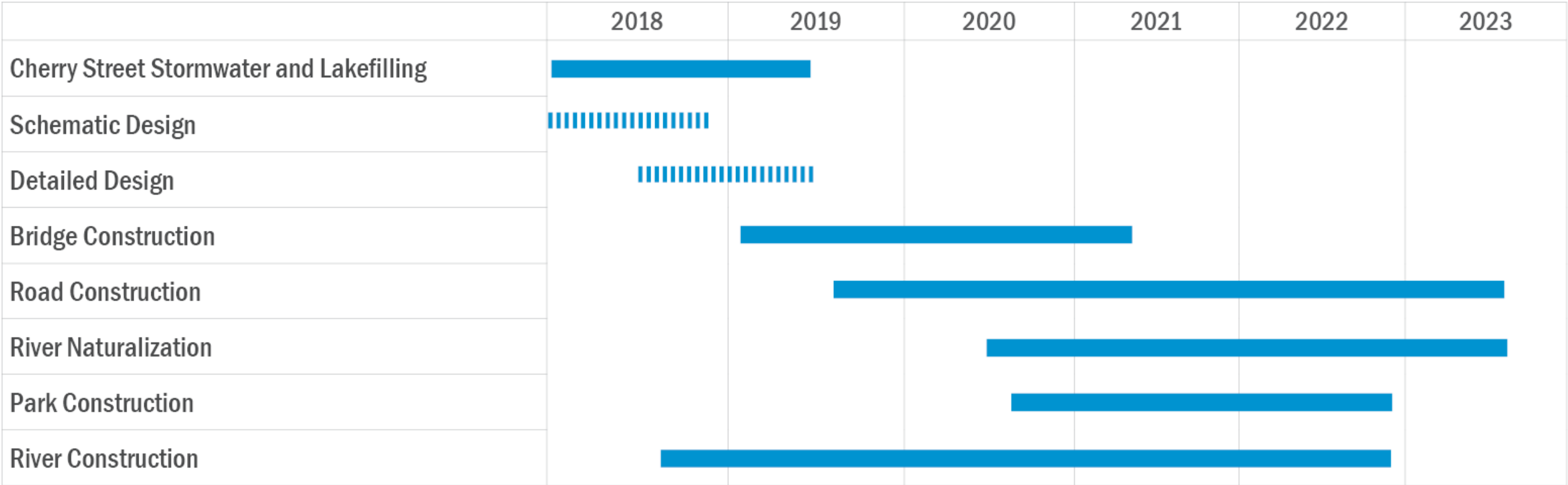
Team Structure

Waterfront Toronto, the City of Toronto, TRCA, CreateTO (TPLC) and Ports Toronto are working collaboratively to deliver this project.

Workstream



Draft Construction Schedule



Design Update: Parks

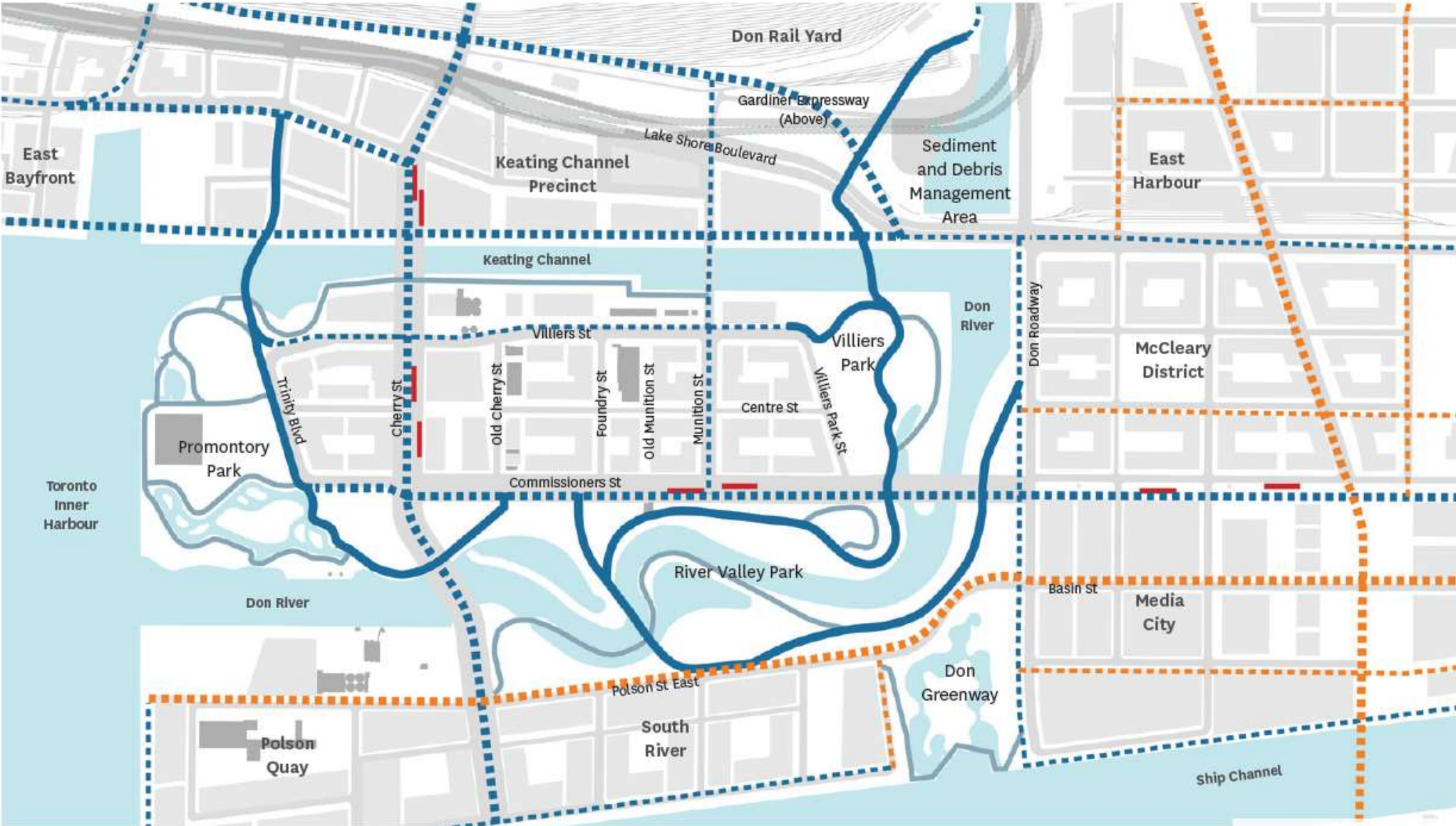
Achieve Flood Protection Through a Three-Tier System



6 Big Moves – 1. Connected to the Urban Context

Legend

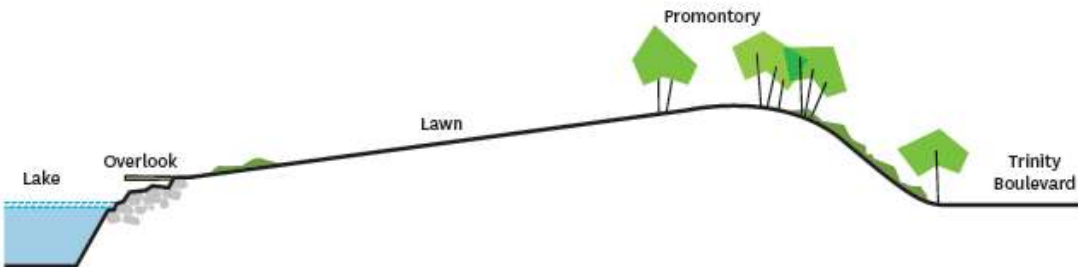
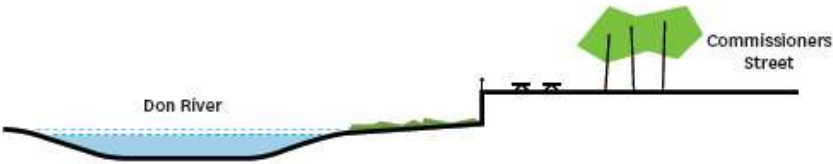
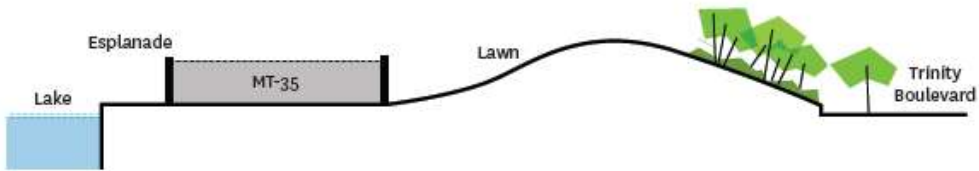
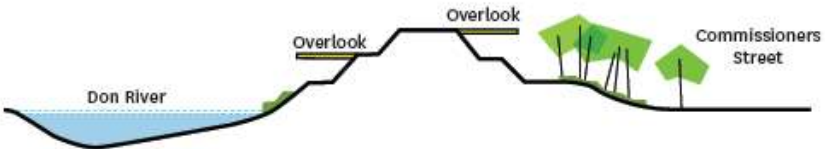
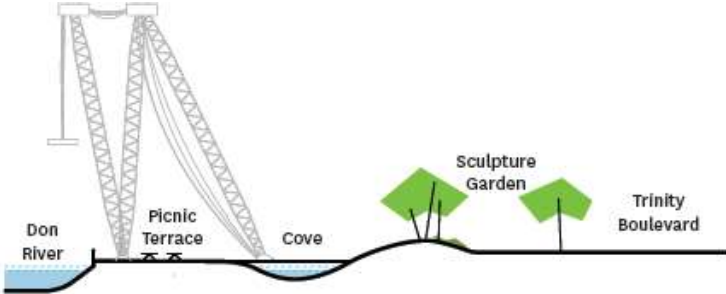
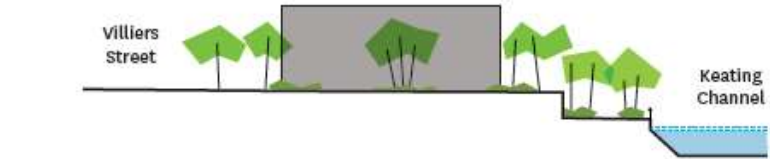
- City Primary Cycle Track
- City Secondary Cycle Track
- City Primary Multi-use Trail
- City Secondary Multi-use Trail
- Proposed Primary Park Trail
- Proposed Secondary Park Trail
- LRT Station



6 Big Moves – 2. Accommodate the Needs of the Community



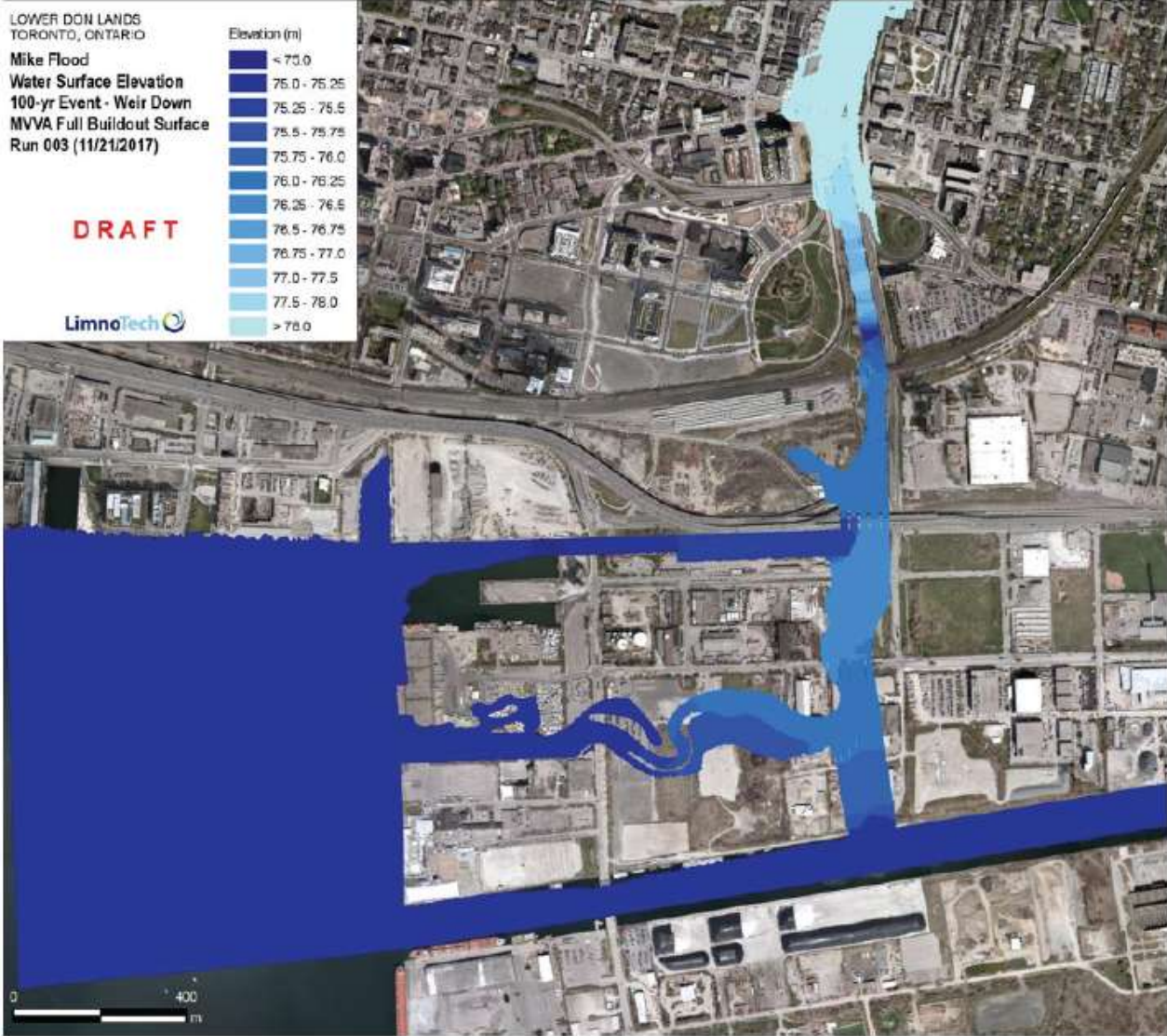
6 Big Moves – 3. Composed with Spatial and Sectional Variety



6 Big Moves – 4. Designed and Engineered with Nature



Sinuosity



Flood Event Modeling

6 Big Moves – 5. Orchestrated as a Complete Ensemble



6 Big Moves – 6. Grounded in WT Sustainability Principles



Climate Positive

- Support a C40 climate positive development
- Consider renewable energy generation
- Increase carbon sequestration strategies
- Reduce Heat Island Effect



Inclusive Resilience

- Protect 290 hectares of the city from flooding
- Develop inclusive programming to relieve the stresses of city living



Intelligent + Connected

- Explore opportunities for WIFI in Parks and Public Realm
- Connect to larger transportation systems
- Use innovative, sustainable materials and systems



Human Experience-Driven

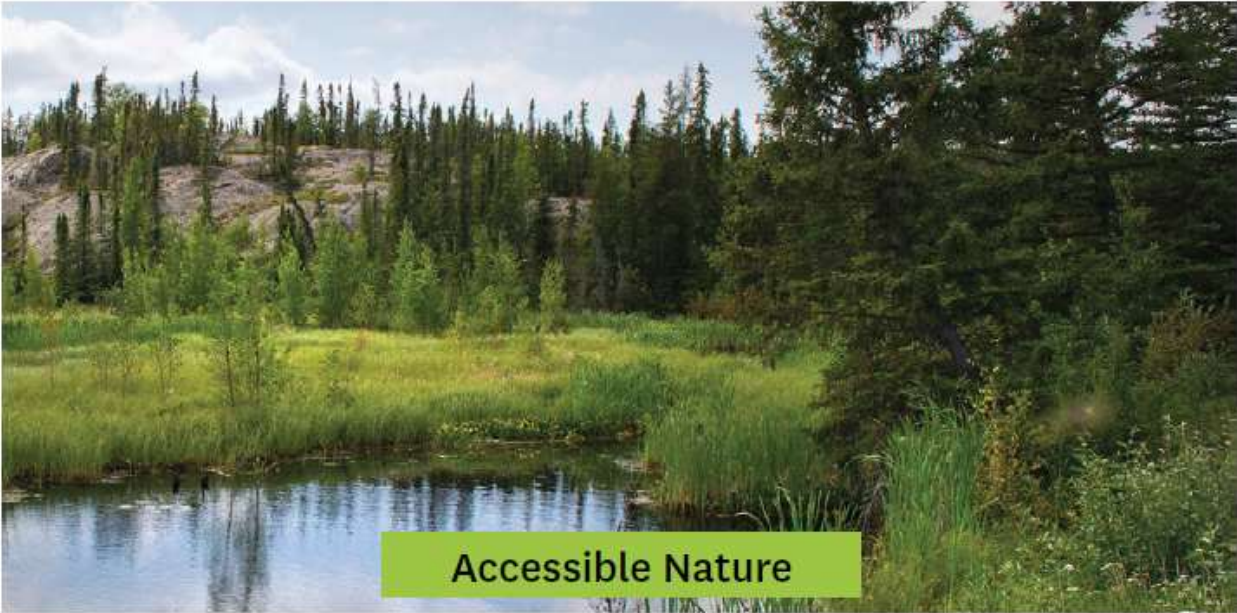
- Enhance physical, mental and social well-being for the Port Lands community
- Provide access to the Don River and Inner Harbour



Biophilic

- Improve and augment ecosystem health and rehabilitate fish and wildlife habitat

Defining Landscape Types



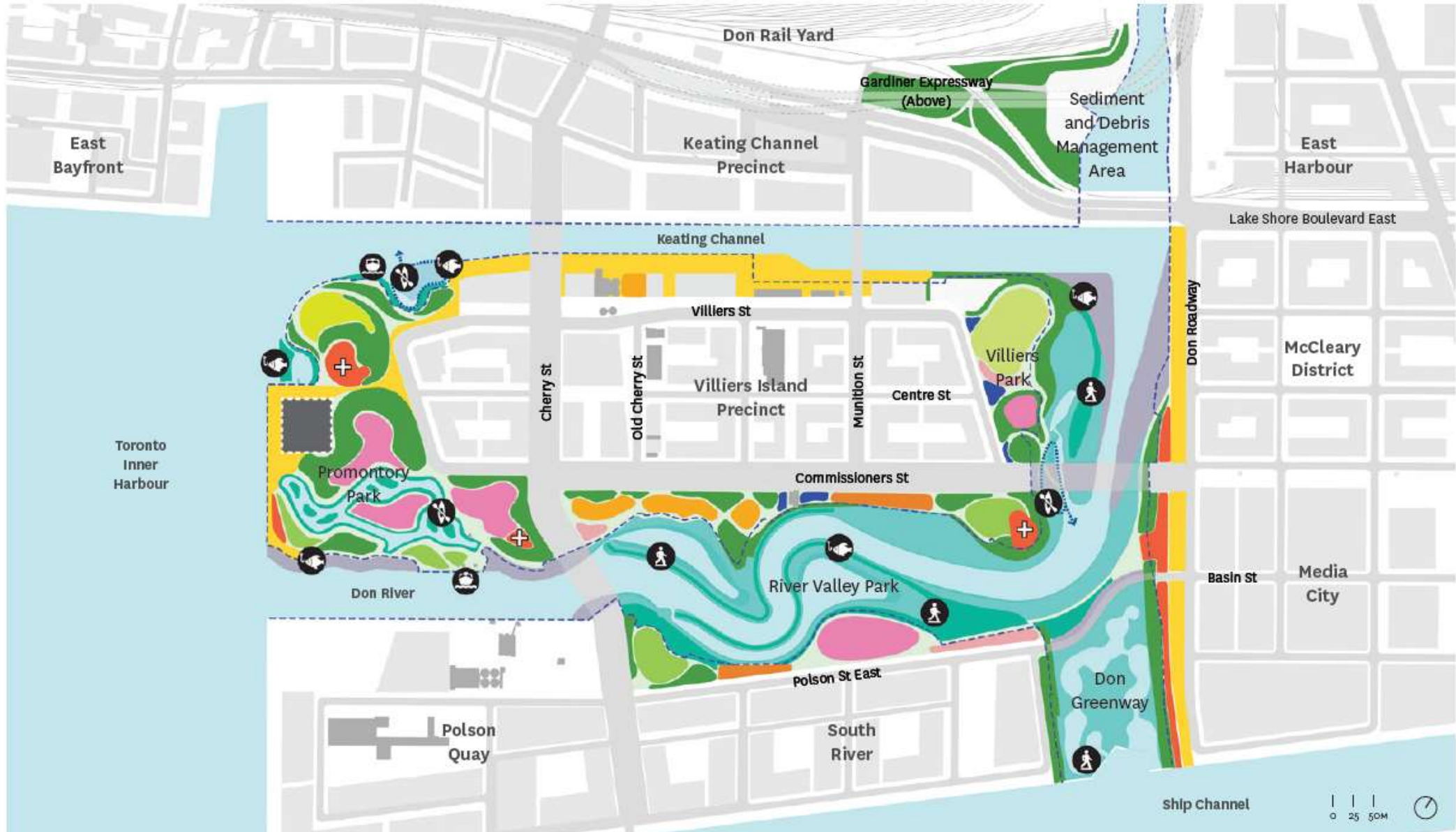
Proposed Distribution of Landscape Types

- Legend**
- City-wide Destination
 - Neighbourhood Park
 - Sports
 - Accessible Nature



Landscape Program - Proposed Design

-  Flexible Program
-  Playscape
-  Court Sports
-  Dog Park
-  Overlook
-  Picnic Terrace
-  Urban Promenade
-  Plaza
-  Event Lawn
-  Passive Use Lawn
-  Multi-Use Field
-  Rocky Harbour Edge
-  Riverine Wetland
-  Levee Wetland
-  Wooded Upland
-  Fishing Node
-  Water Taxi Landing
-  Nature Exploration
-  Water Access



Possible Landscape Typologies

Rocky Harbour Edge



River Channel



Riverine Wetland



Levee Wetland



Possible Landscape Typologies

Water Access



Nature Exploration



Wooded Upland



Event Lawn



Possible Landscape Typologies

Passive Use Lawn



Overlook



Picnic Terrace



Urban Promenade



Possible Landscape Typologies

Public Art



Plaza



City-wide Playscape



Neighbourhood Playscape



Possible Landscape Typologies

Nature Play



Dog Park



Heritage Adaptive Re-use



Industrial Landmark



Possible Landscape Typologies

Multi-Use Field



Court Sports



Active Recreation



Court Sports

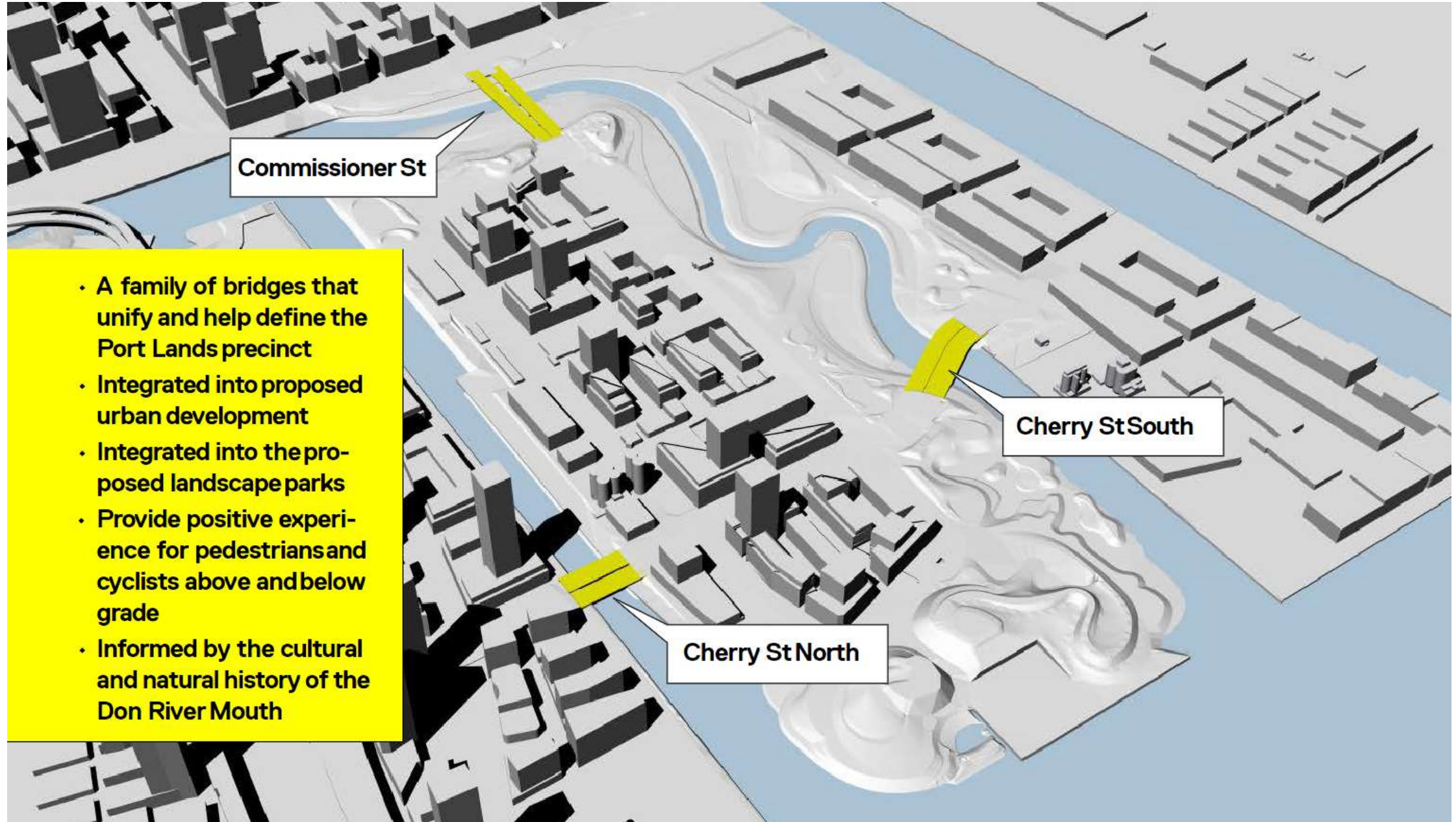


Proposed Design



Design Update: Roads and Bridges

Bridges



Commissioner St

Cherry St South

Cherry St North

- A family of bridges that unify and help define the Port Lands precinct
- Integrated into proposed urban development
- Integrated into the proposed landscape parks
- Provide positive experience for pedestrians and cyclists above and below grade
- Informed by the cultural and natural history of the Don River Mouth

Bridges

Site Analysis

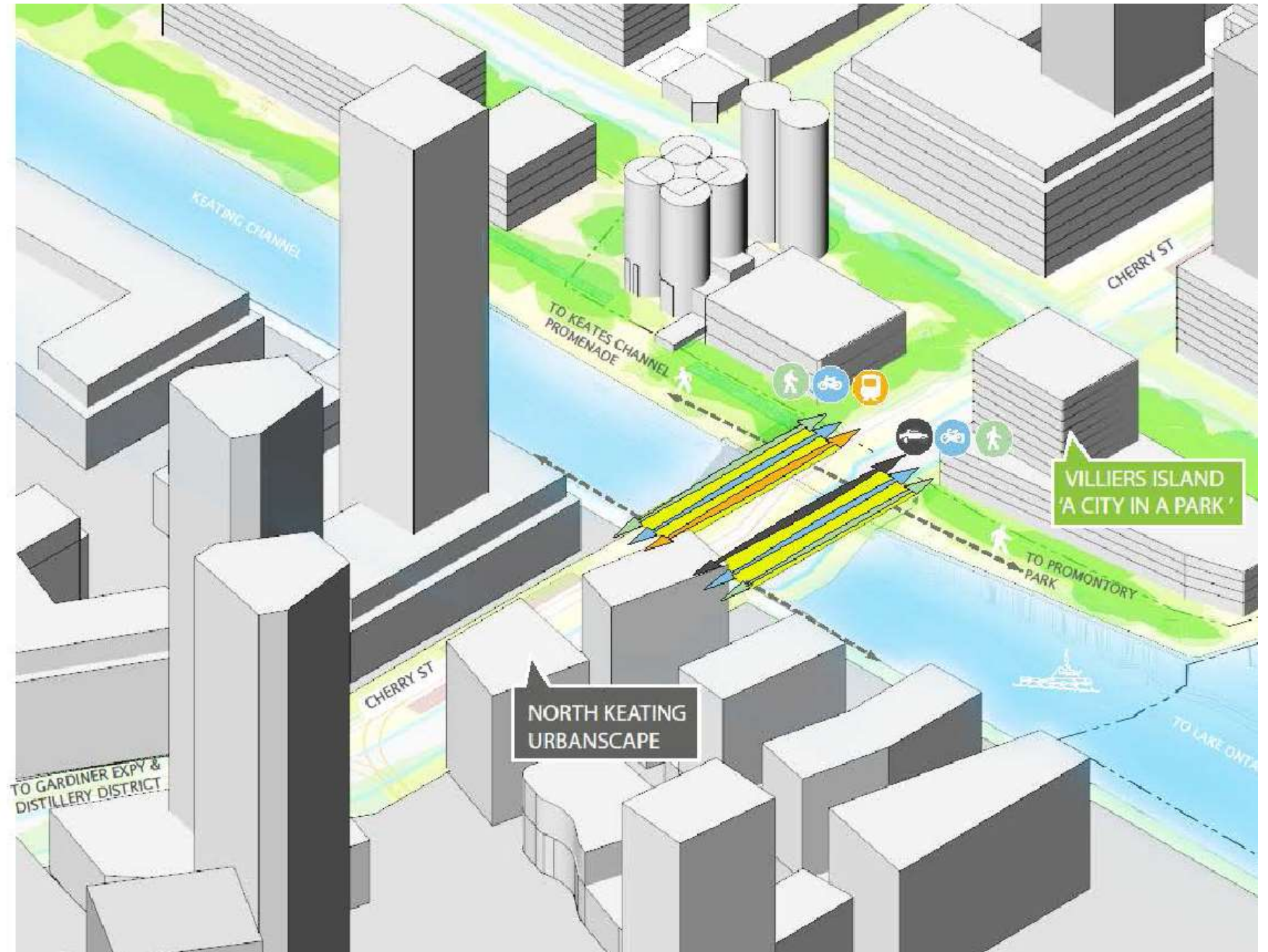
Cherry North

Opportunities

- Gateway Bridge

Parameters

- Single Phase Construction
- Single Span (dual carriageway)
- Tug boat Clearance
- Pedestrian Clearance
- Constrained site



Bridges

Site Analysis

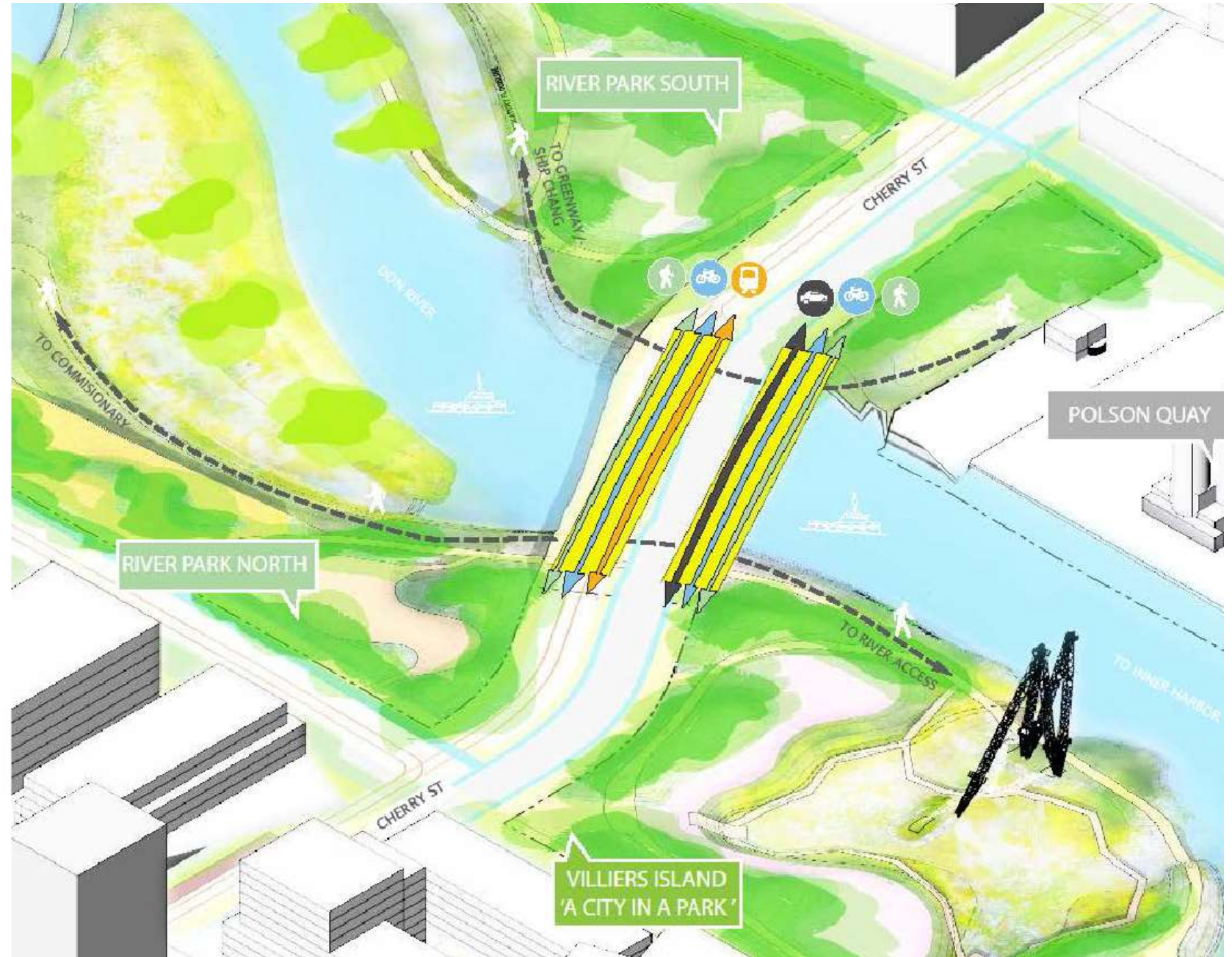
Cherry South

- **Opportunities**

- High Visibility
- Landscape integration
- Minimize visual impact of piers

- **Parameters**

- Two Phase Construction
- Three Spans
- Pedestrian Clearance
- Landscaped site
- Adjustable Alignment
- Minimize flow obstruction



Bridges

Site Analysis

Commissioner

• Opportunities

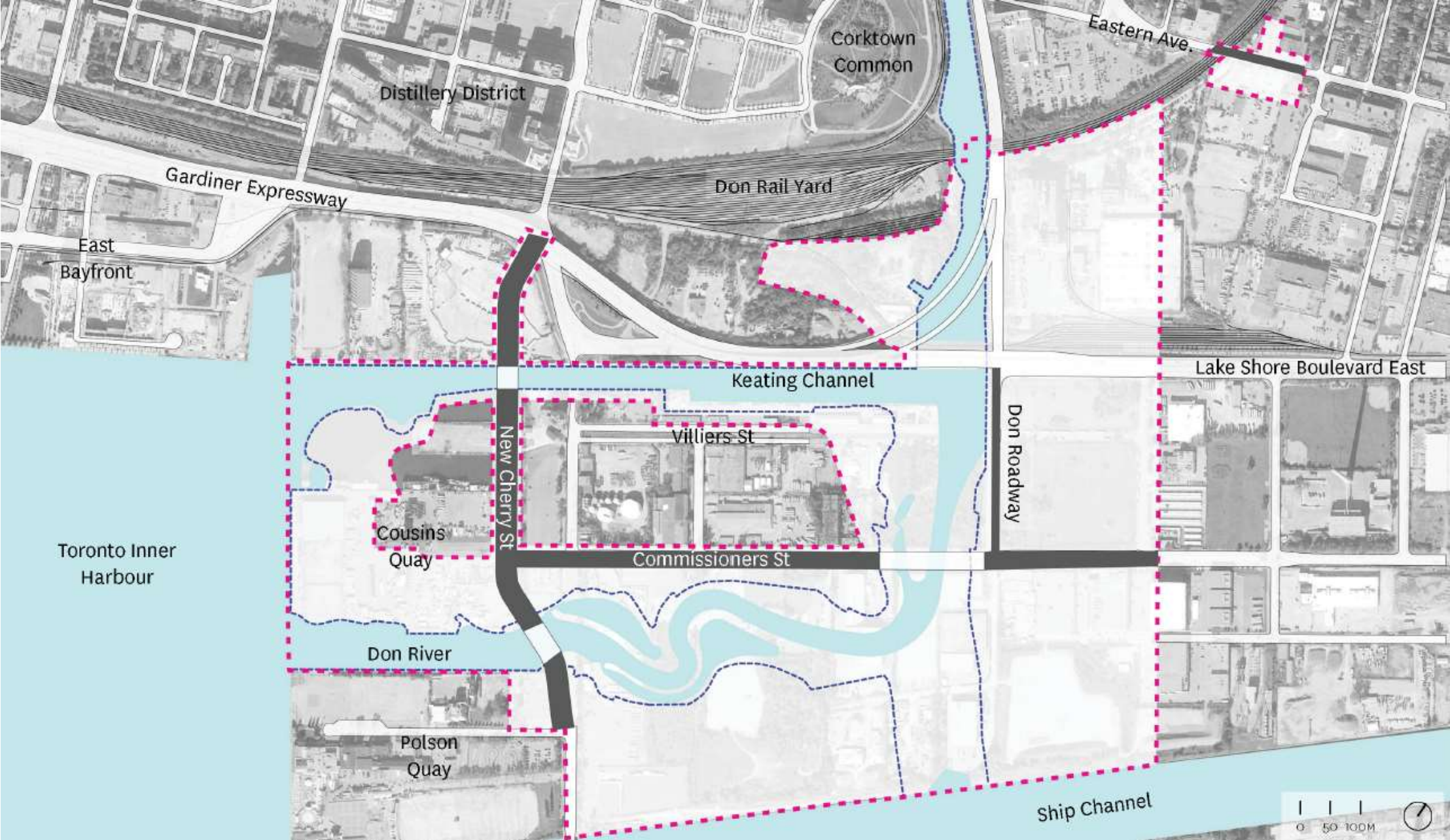
- Transitional portal
- Minimize visual impact of piers
- Landscape integration
- Daylight Penetration/Access

• Parameters

- Two Phase Construction
- Five unequal Spans
- Pedestrian Clearance (2.5M)
- Landscaped site
- Minimize flow obstruction



Roads



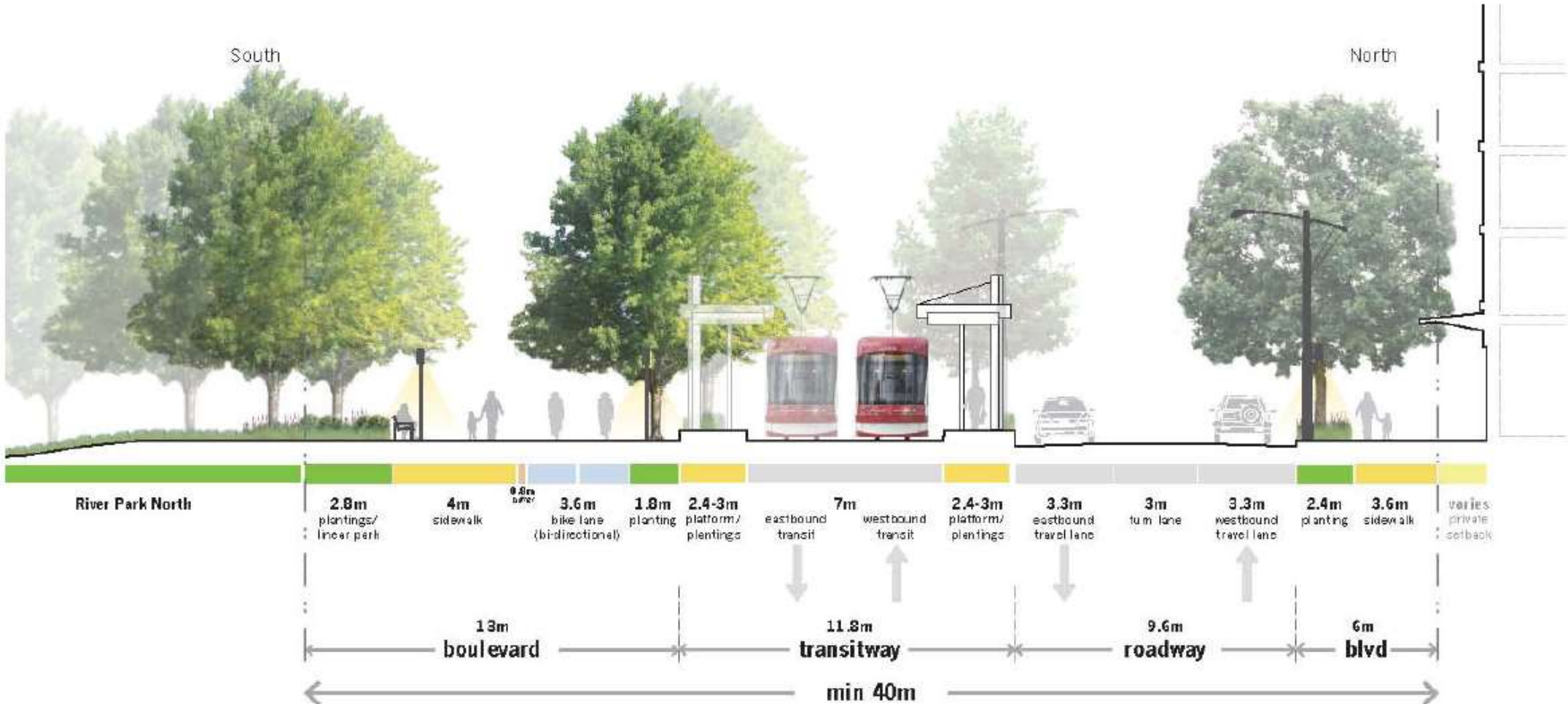
Roads

New Cherry Street - Villiers Island Precinct Plan



Roads

Commissioners Street - Villiers Island Precinct Plan



Don Roadway - TSMP EA



Roads

Exploring Expressions of the Post-Industrial Landscape



LUX – Stahlfabrik Belval-Ouest, Luxembourg



Cleveland Flats



Brooklyn Bridge Park

Public Consultation Feedback – February 22, 2018

February 22, 2018: Community Consultation

Focus:

- Proposed programming for 16 hectares of new parkland
- Design of naturalized green spaces – coastal wetlands, meadows

Activities:

- Meet Your Neighbor
- Image Inspiration
- Envelope Wall
- Map Scavenger Hunt



February 22, 2018: Community Consultation

Feedback Themes

Integration of the natural and the urban

A mix of green/natural-looking spaces and constructed spaces
Experiencing views of the city while being in a natural landscape

Naturalization

Desire to feel like they're escaping the city
Desire to sit on the grass, access the water, walk through naturalized trail systems

Access to water

Participants mentioned swimming, access to water sports and craft boating for users of all skill levels
Consider parking, storage and mooring spaces
Comments related to water quality and curiosity about remediation measures in the design

Connection to surrounding neighbourhoods and the broader waterfront park system

Continuous green pedestrian and cycle pathways close to the water uninterrupted by buildings
How will the new parks help to connect and integrate different neighbourhoods in the area?

Accessibility by transit and multiple modes

Concerns about having equitable access for different users coming from different parts of town
Separation of different transit modes was noted as something that needs to be improved on the Waterfront in general

February 22, 2018: Community Consultation

Feedback Themes

Accessibility for diverse groups of people

Ensure new park spaces are accessible to diverse users

Desire for lively parks that serve as gathering spaces for diverse groups

Programming could ensure activities are available for users of all ages and diverse skill levels

Integration of history

Protecting and addressing history came up as a reason why participants would visit a new park

Integration of Indigenous content into the park

Maintenance

Request that the design consider future maintenance

All season use

This was a theme seen in the stories produced by the Meet Your Neighbours conversations

Participants are looking for more winter activities by the water and access to four season support facilities

Infrastructure and parks

How do we place the design of the parkland in the context of urban resiliency?

Overview

Overview

Four areas we'll be looking for detailed feedback from the SAC at future meetings:

- a. Recreation/Play /Access to Water/Accessibility
- b. Roads and bridges
- c. Naturalization and ecology
- d. Heritage integration/programming/public art

Questions?