



WATERFRONToronto

Port Lands Flood Protection

LUAC Kick-off Meeting

3/7/2018

Agenda

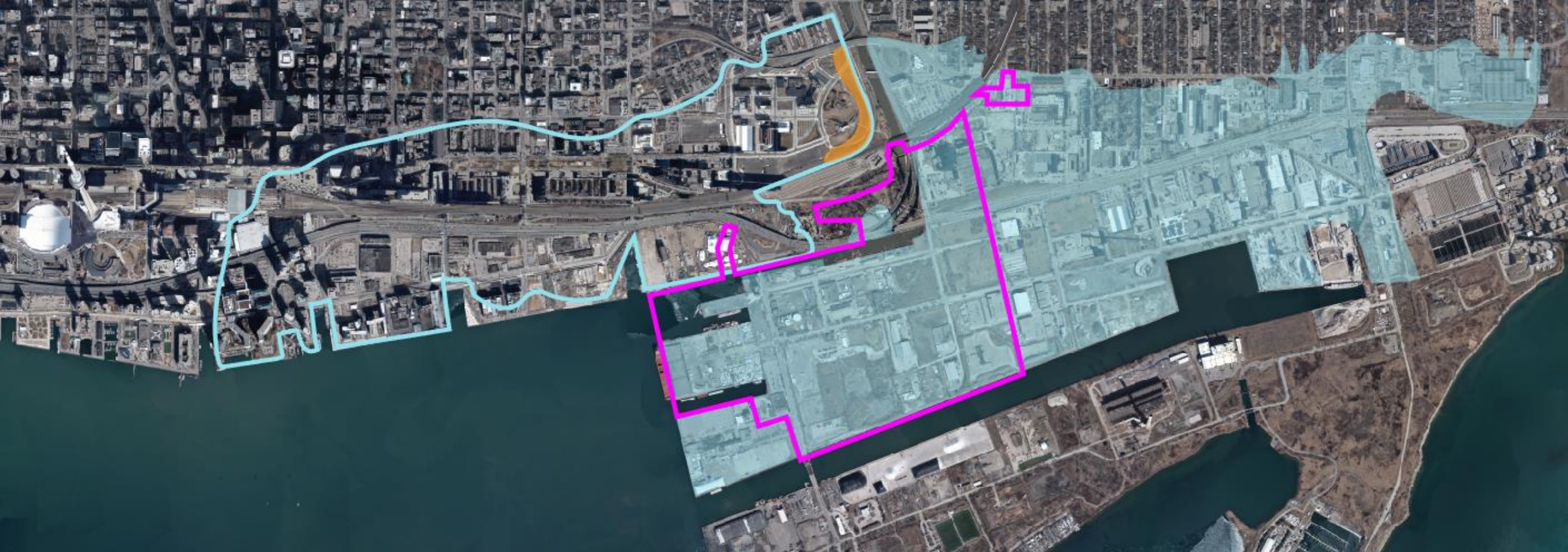
1. Introductions

2. Presentation

- Background/Area Context
- What are we building?
- Project team
- Construction Schedule + Sequencing
- Planning for Construction

3. Q & A

Port Lands Flood Protection



Flood Plain



Flood Protected

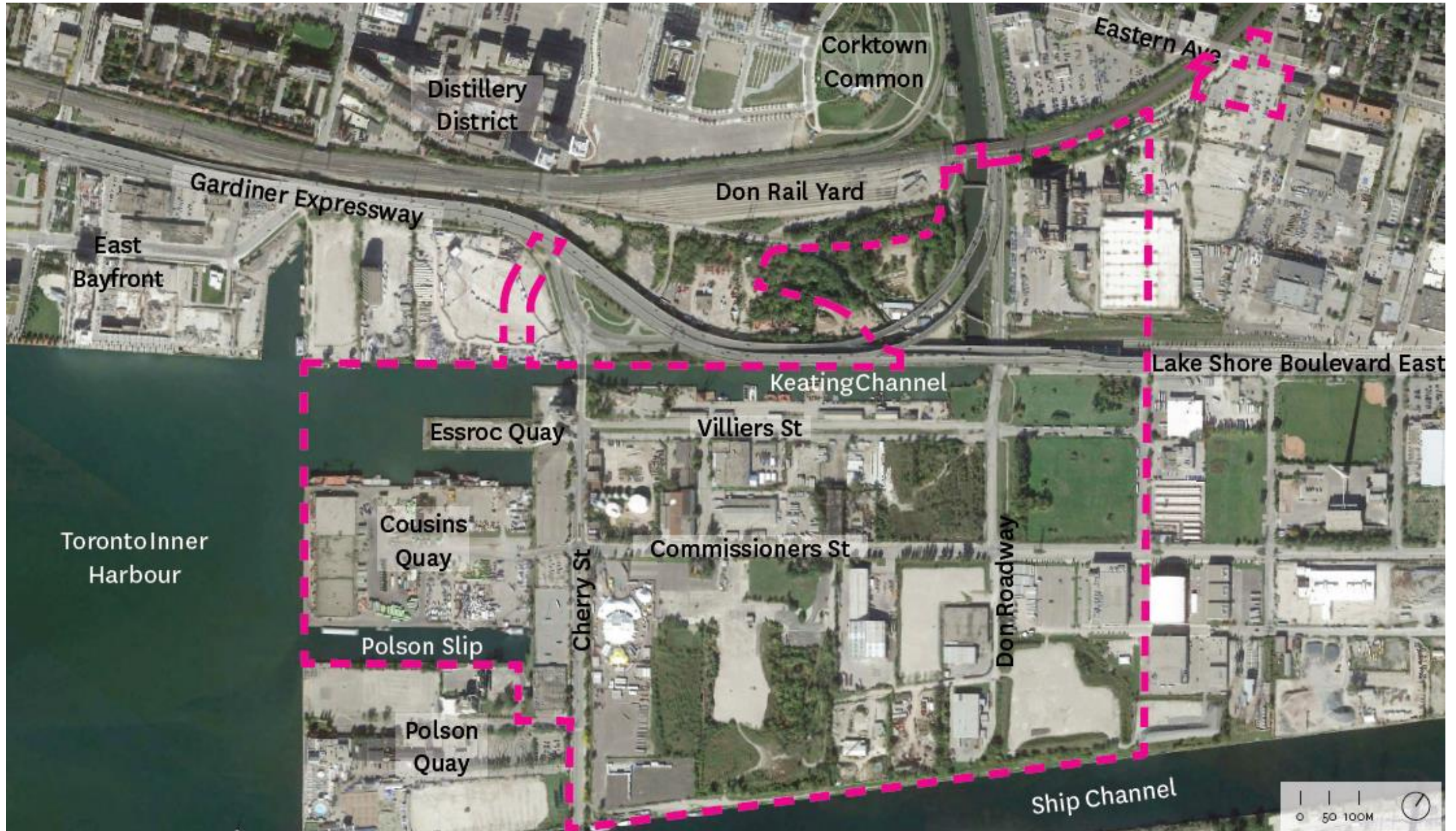


Flood Protection
Landform



PLFPEI

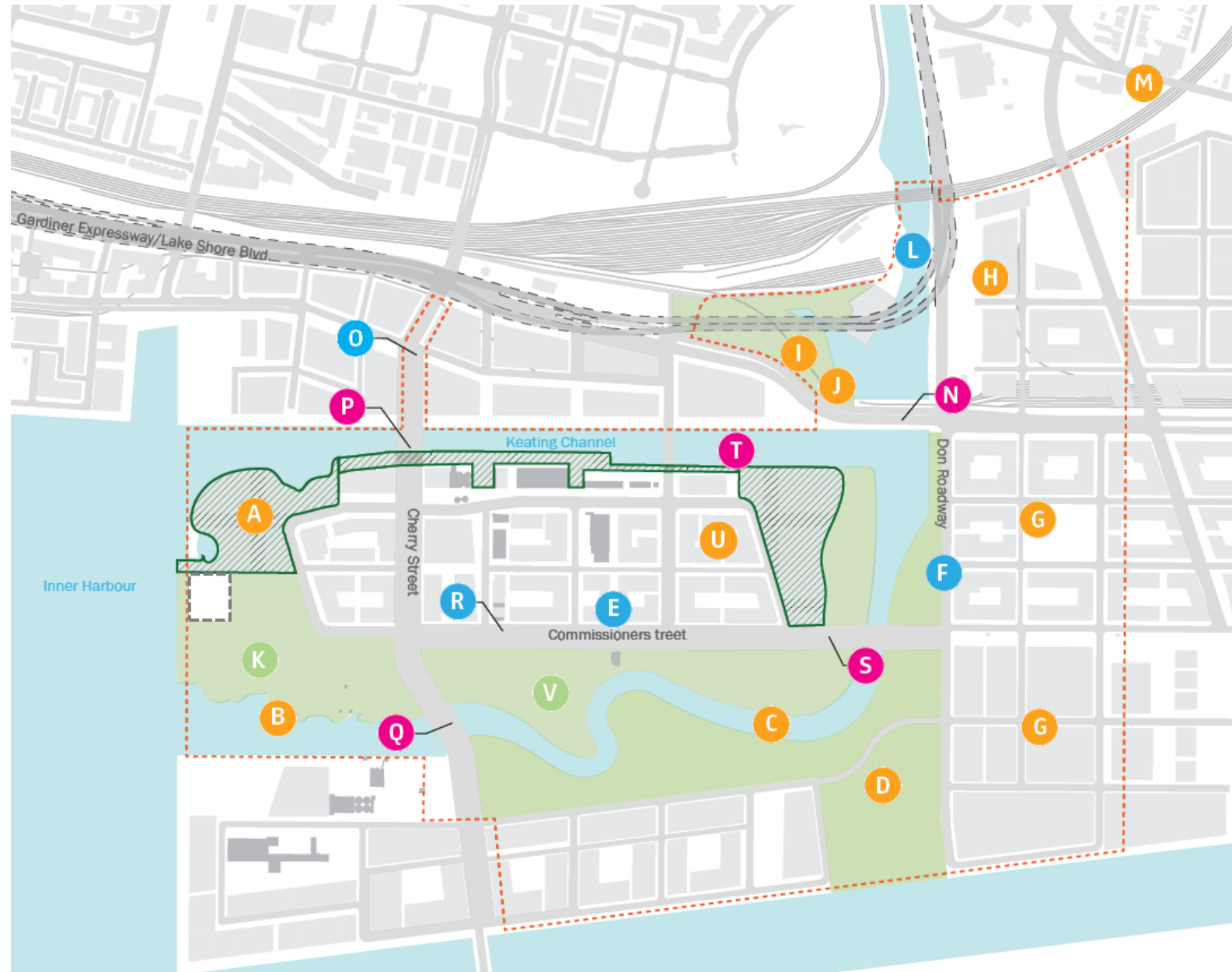
Project Area – Existing Conditions



What are we building?

- A** Cherry Street Stormwater and Lakefilling
- B** Polson Slip Naturalization
- C** Flood Protection: River Valley
- D** Don Greenway (Spillway & Wetland)
- E** Site Wide Municipal Infrastructure
- F** Don Roadway
- G** Don Roadway Valley Wall Feature
- H** East Harbour Flood Protection Land Form
- I** Sediment and Debris Management Area
- J** Flow Control Weirs
- K** Promontory Park
- L** Hydro One Integration
- M** Eastern Avenue Flood Protection
- N** Lake Shore Road and Rail Bridge Modifications
- O** Cherry Street Re-alignment (incl. BRT)
- P** Cherry Street Bridge North (incl. BRT)
- Q** Cherry Street Bridge South (vehicular only)
- R** Commissioners Street
- S** Commissioners Street Bridge (vehicular only)
- T** Keating Channel Modifications
- U** Villiers Island Grading
- V** River Park

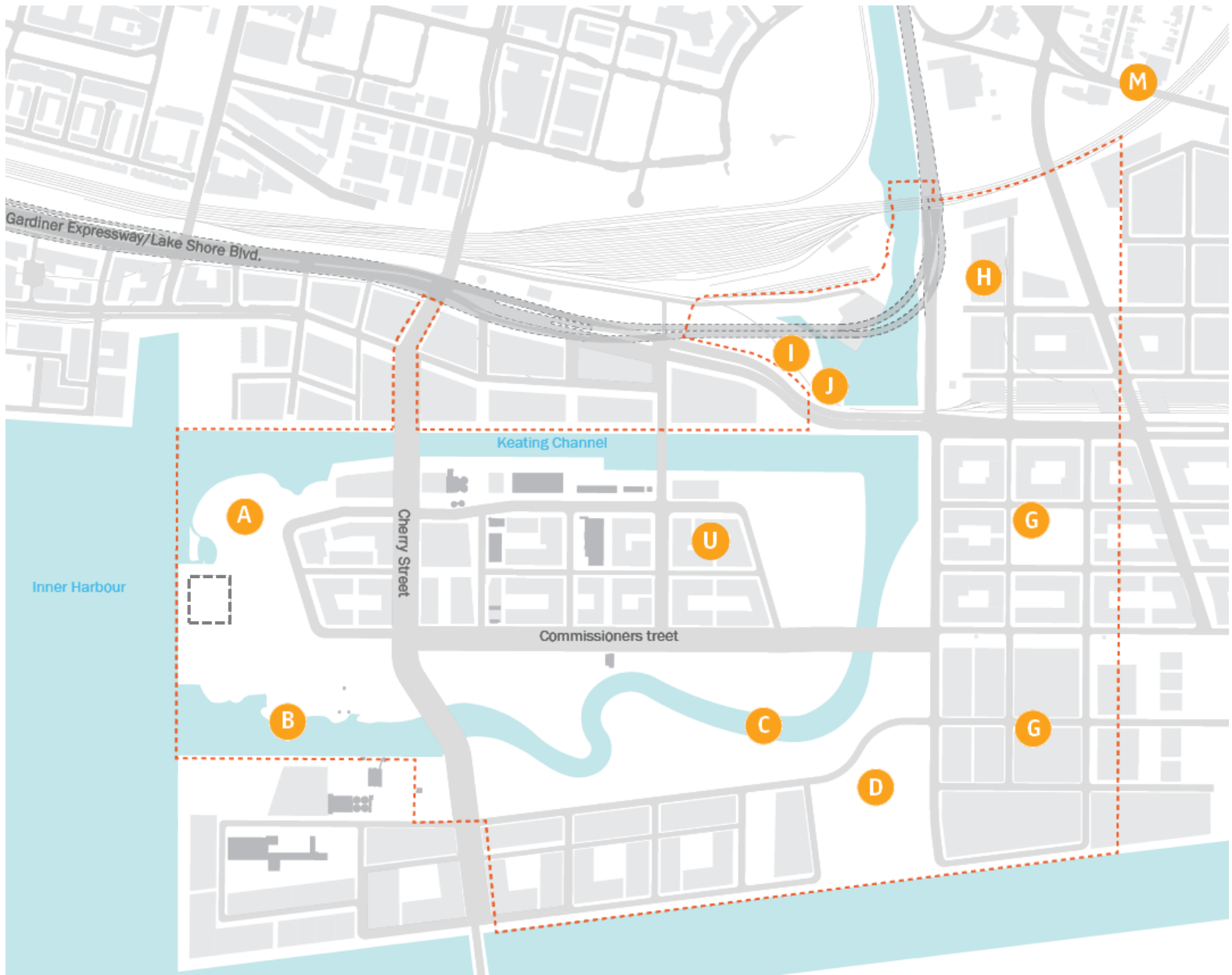
-  Port Lands Flood Protection and Enabling Infrastructure Boundary
-  Parks
-  Roads and Municipal Infrastructure
-  Bridges & Structures
-  Earthworks/Flood Protection
-  Parks not Included in scope



Earthworks/Flood Protection

- A** Cherry Street Stormwater and Lakefilling
- B** Polson Slip Naturalization
- C** Flood Protection: River Valley
- D** Don Greenway (Spillway & Wetland)
- E** Site Wide Municipal Infrastructure
- F** Don Roadway
- G** Don Roadway Valley Wall Feature
- H** East Harbour Flood Protection Land Form
- I** Sediment and Debris Management Area
- J** Flow Control Weirs
- K** Promontory Park
- L** Hydro One Integration
- M** Eastern Avenue Flood Protection
- N** Lake Shore Road and Rail Bridge Modifications
- O** Cherry Street Re-alignment (incl. BRT)
- P** Cherry Street Bridge North (incl. BRT)
- Q** Cherry Street Bridge South (vehicular only)
- R** Commissioners Street
- S** Commissioners Street Bridge (vehicular only)
- T** Keating Channel Modifications
- U** Villiers Island Grading
- V** River Park

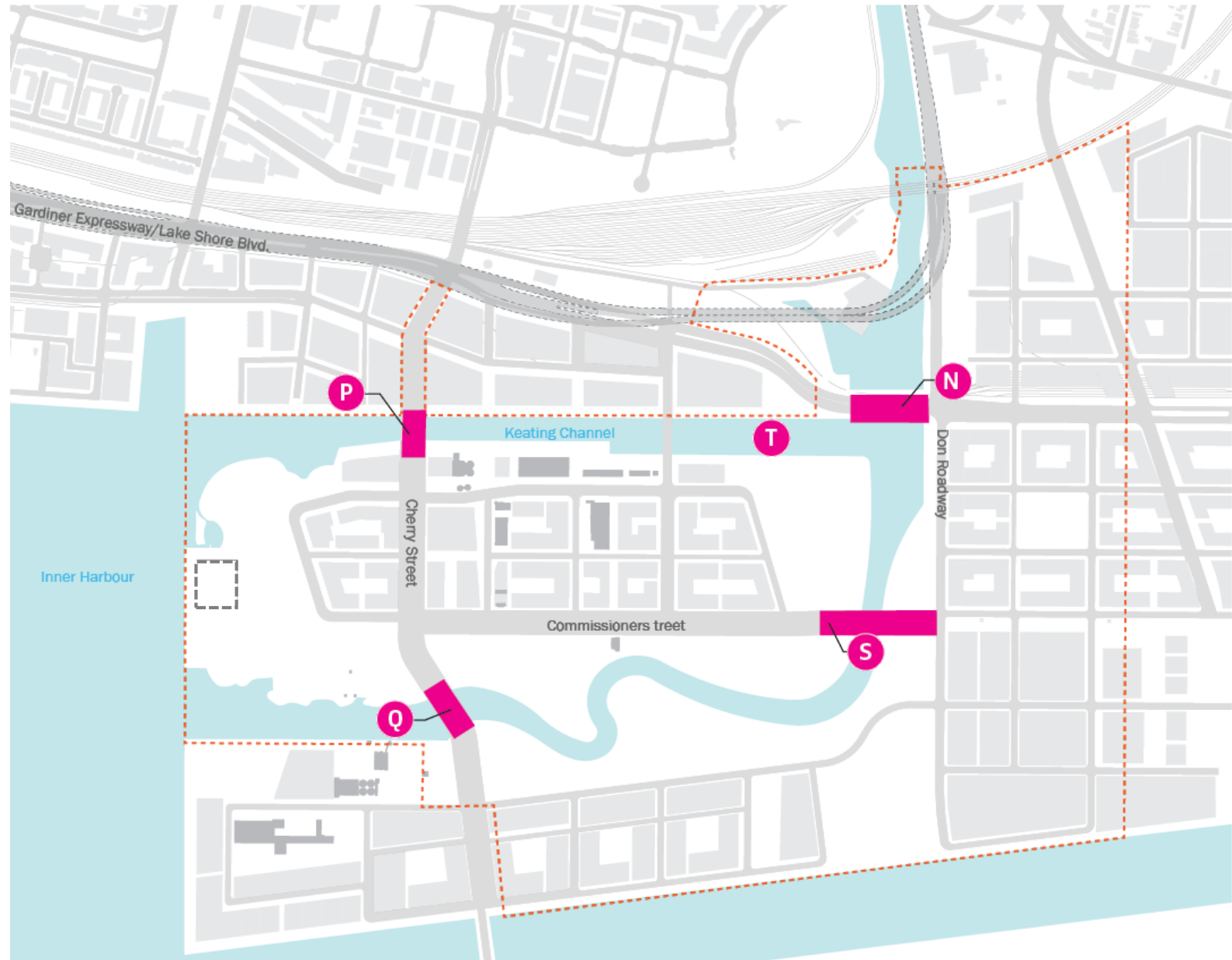
- Port Lands Flood Protection and Enabling Infrastructure Boundary
- Parks
- Roads and Municipal Infrastructure
- Bridges & Structures
- Earthworks/Flood Protection



Bridges and Structures

- A Cherry Street Stormwater and Lakefilling
- B Polson Slip Naturalization
- C Flood Protection: River Valley
- D Don Greenway (Spillway & Wetland)
- E Site Wide Municipal Infrastructure
- F Don Roadway
- G Don Roadway Valley Wall Feature
- H East Harbour Flood Protection Land Form
- I Sediment and Debris Management Area
- J Flow Control Weirs
- K Promontory Park
- L Hydro One Integration
- M Eastern Avenue Flood Protection
- N Lake Shore Road and Rail Bridge Modifications
- O Cherry Street Re-alignment (incl. BRT)
- P Cherry Street Bridge North (incl. BRT)
- Q Cherry Street Bridge South (vehicular only)
- R Commissioners Street
- S Commissioners Street Bridge (vehicular only)
- T Keating Channel Modifications
- U Villiers Island Grading
- V River Park

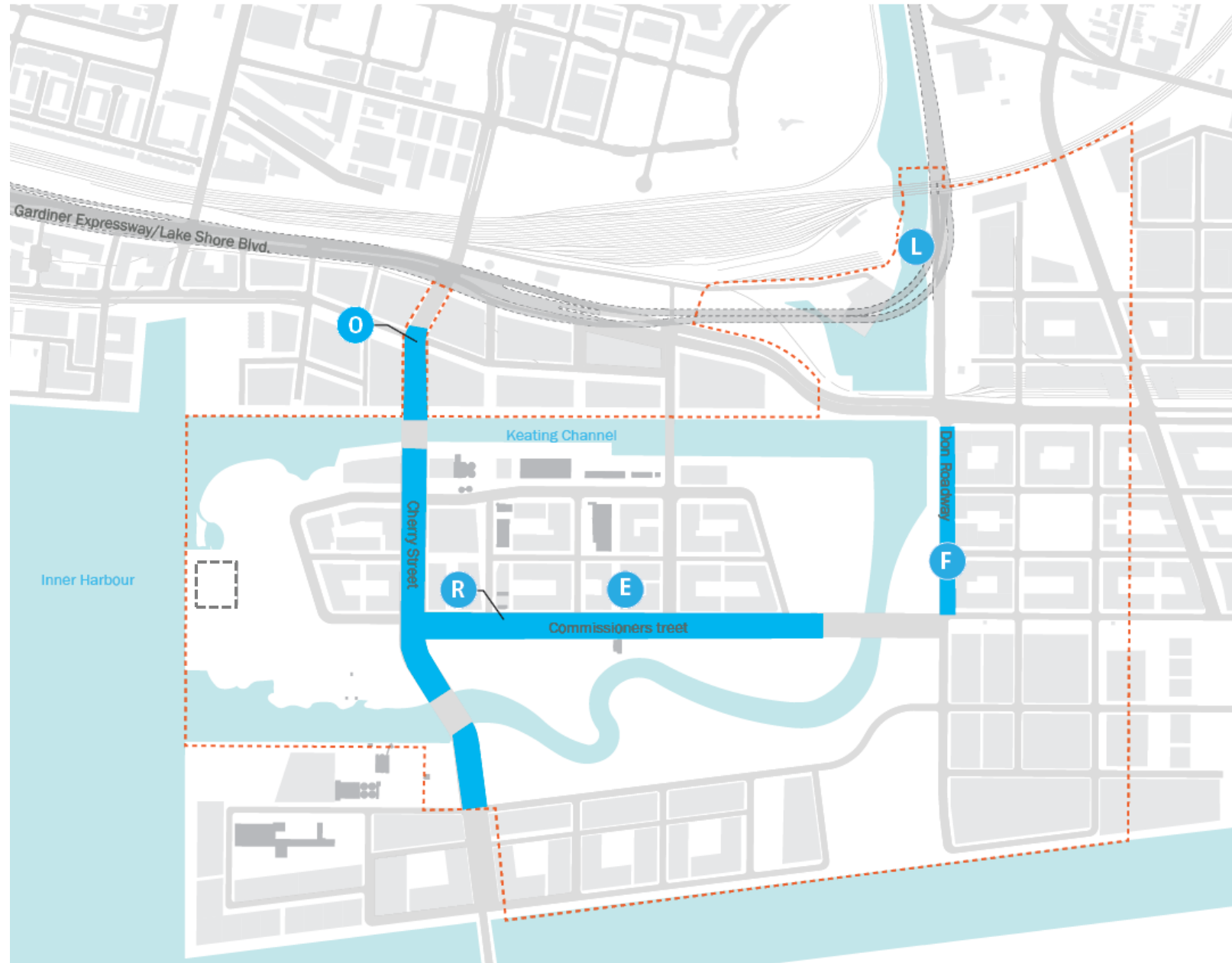
- Port Lands Flood Protection and Enabling Infrastructure Boundary
- Parks
- Roads and Municipal Infrastructure
- Bridges & Structures
- Earthworks/Flood Protection



Roads and Municipal Services

- A** Cherry Street Stormwater and Lakefilling
- B** Polson Slip Naturalization
- C** Flood Protection: River Valley
- D** Don Greenway (Spillway & Wetland)
- E** Site Wide Municipal Infrastructure
- F** Don Roadway
- G** Don Roadway Valley Wall Feature
- H** East Harbour Flood Protection Land Form
- I** Sediment and Debris Management Area
- J** Flow Control Weirs
- K** Promontory Park
- L** Hydro One Integration
- M** Eastern Avenue Flood Protection
- N** Lake Shore Road and Rail Bridge Modifications
- O** Cherry Street Re-alignment (incl. BRT)
- P** Cherry Street Bridge North (incl. BRT)
- Q** Cherry Street Bridge South (vehicular only)
- R** Commissioners Street
- S** Commissioners Street Bridge (vehicular only)
- T** Keating Channel Modifications
- U** Villiers Island Grading
- V** River Park

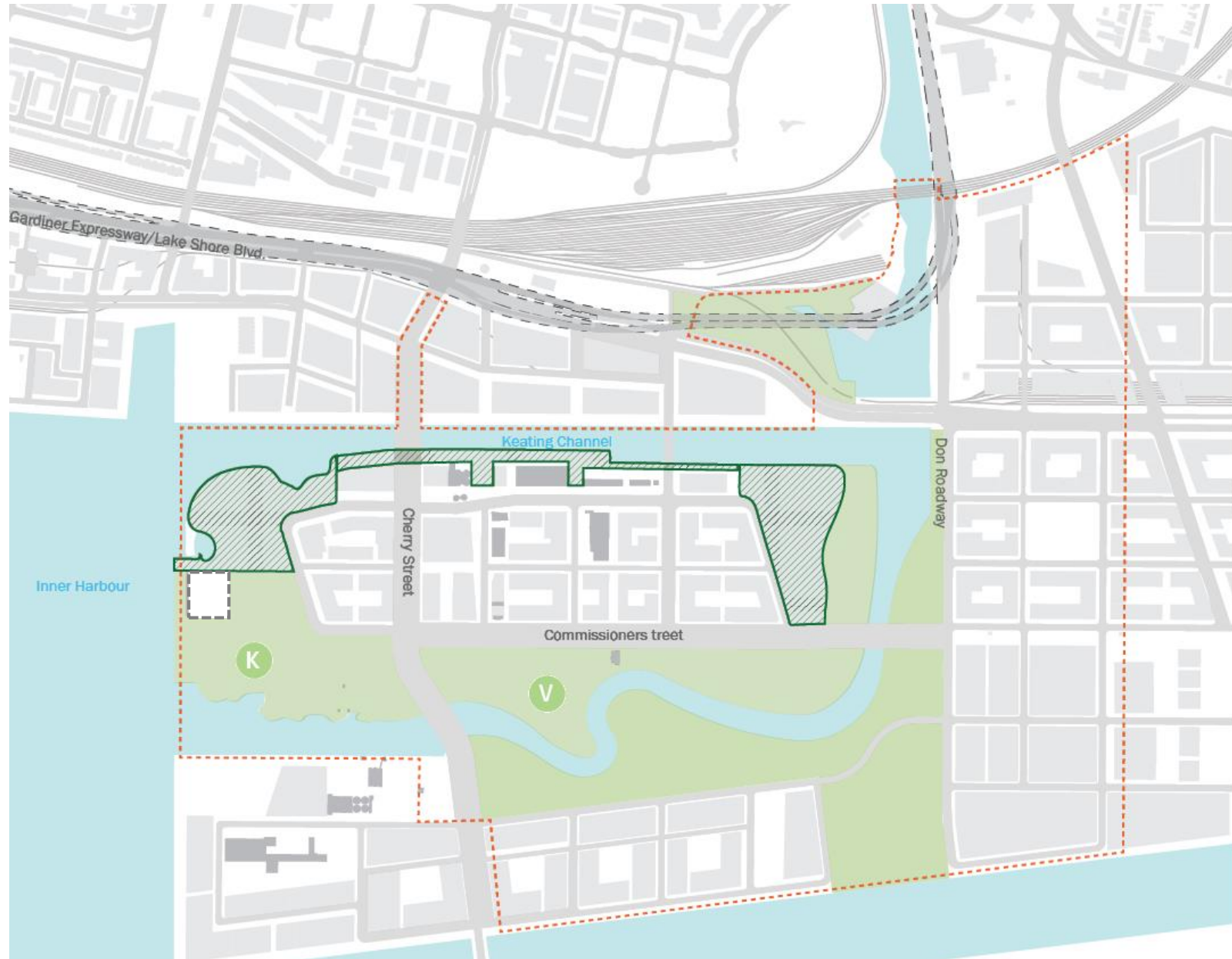
-  Port Lands Flood Protection and Enabling Infrastructure Boundary
-  Parks
-  Roads and Municipal Infrastructure
-  Bridges & Structures
-  Earthworks/Flood Protection



Parks

- A** Cherry Street Stormwater and Lakefilling
- B** Polson Slip Naturalization
- C** Flood Protection: River Valley
- D** Don Greenway (Spillway & Wetland)
- E** Site Wide Municipal Infrastructure
- F** Don Roadway
- G** Don Roadway Valley Wall Feature
- H** East Harbour Flood Protection Land Form
- I** Sediment and Debris Management Area
- J** Flow Control Weirs
- K** Promontory Park
- L** Hydro One Integration
- M** Eastern Avenue Flood Protection
- N** Lake Shore Road and Rail Bridge Modifications
- O** Cherry Street Re-alignment (incl. BRT)
- P** Cherry Street Bridge North (incl. BRT)
- Q** Cherry Street Bridge South (vehicular only)
- R** Commissioners Street
- S** Commissioners Street Bridge (vehicular only)
- T** Keating Channel Modifications
- U** Villiers Island Grading
- V** River Park

-  Port Lands Flood Protection and Enabling Infrastructure Boundary
-  Parks
-  Roads and Municipal Infrastructure
-  Bridges & Structures
-  Earthworks/Flood Protection
-  Parks not Included in scope



Team Structure

Waterfront Toronto, the City of Toronto, TRCA, CreateTO (TPLC) and Ports Toronto are working collaboratively to deliver this project.

Workstream

Parks, Flood Protection & River Valley

- All flood protection elements
- Park and wetland design
- Integration of all four streams

MVVA

Roads and Municipal Infrastructure

- Public realm design
 - Cherry Street
 - Don Roadway
 - Commissioners Street
- All municipal services

WSP with DTAH

Bridges

- Cherry Street North Bridge
- Cherry Street South Bridge
- Commissioners Street Bridge
- Lake Shore Bridge
- Integration with roads and municipal services

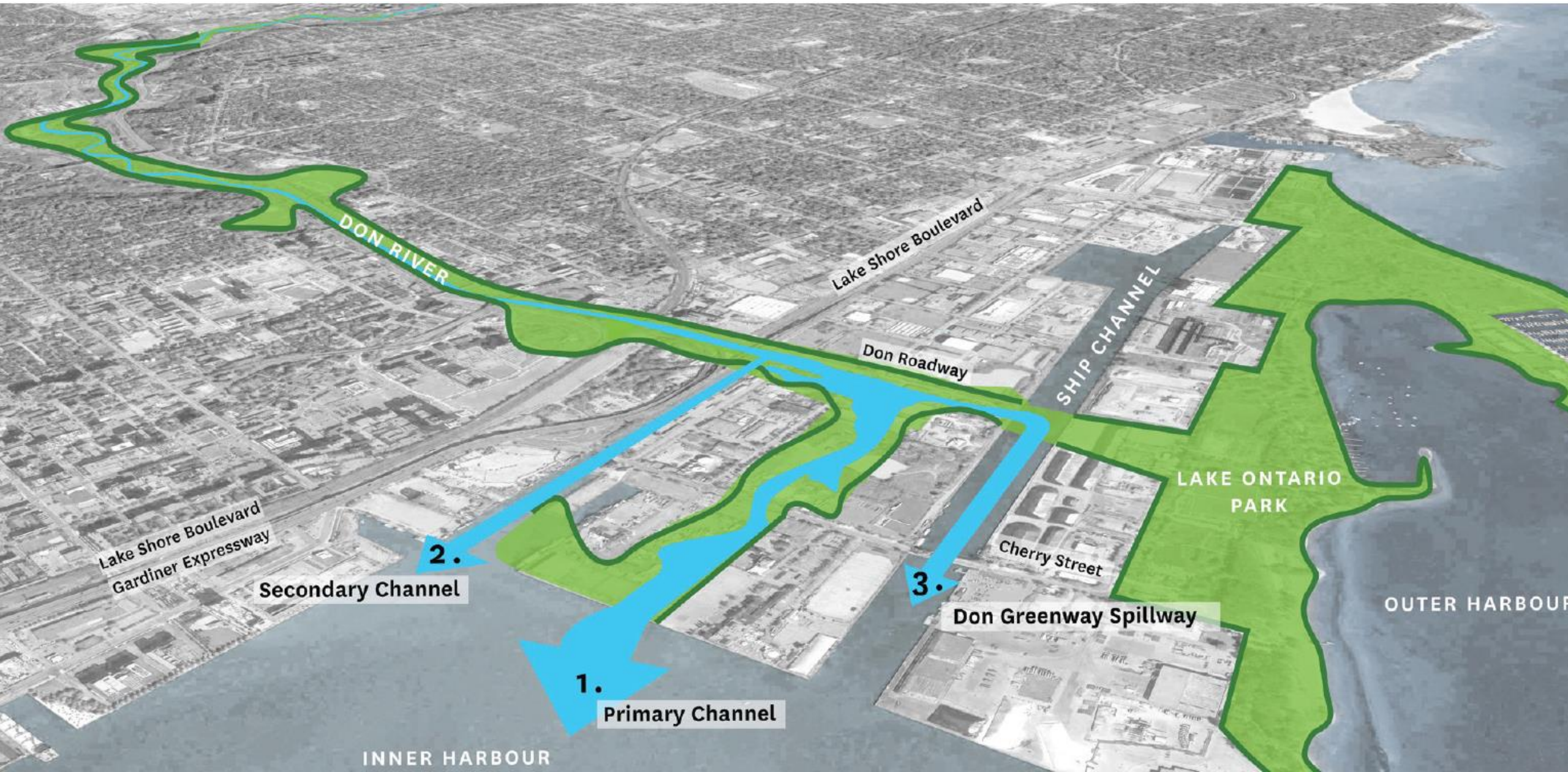
Entuitive with Grimshaw & SBP

Environmental

- Environmental permits
- Baseline environmental information and modeling
- Soil and groundwater remediation and risk management design
- Environmental monitoring plans

Jacobs (formerly CH2M)

Achieve Flood Protection Through a Three-Tier System



Defining Landscape Types



City-wide Destination



Neighbourhood Park



Sports



Accessible Nature

Proposed Distribution of Landscape Types

- Legend**
- City-wide Destination
 - Neighbourhood Park
 - Sports
 - Accessible Nature

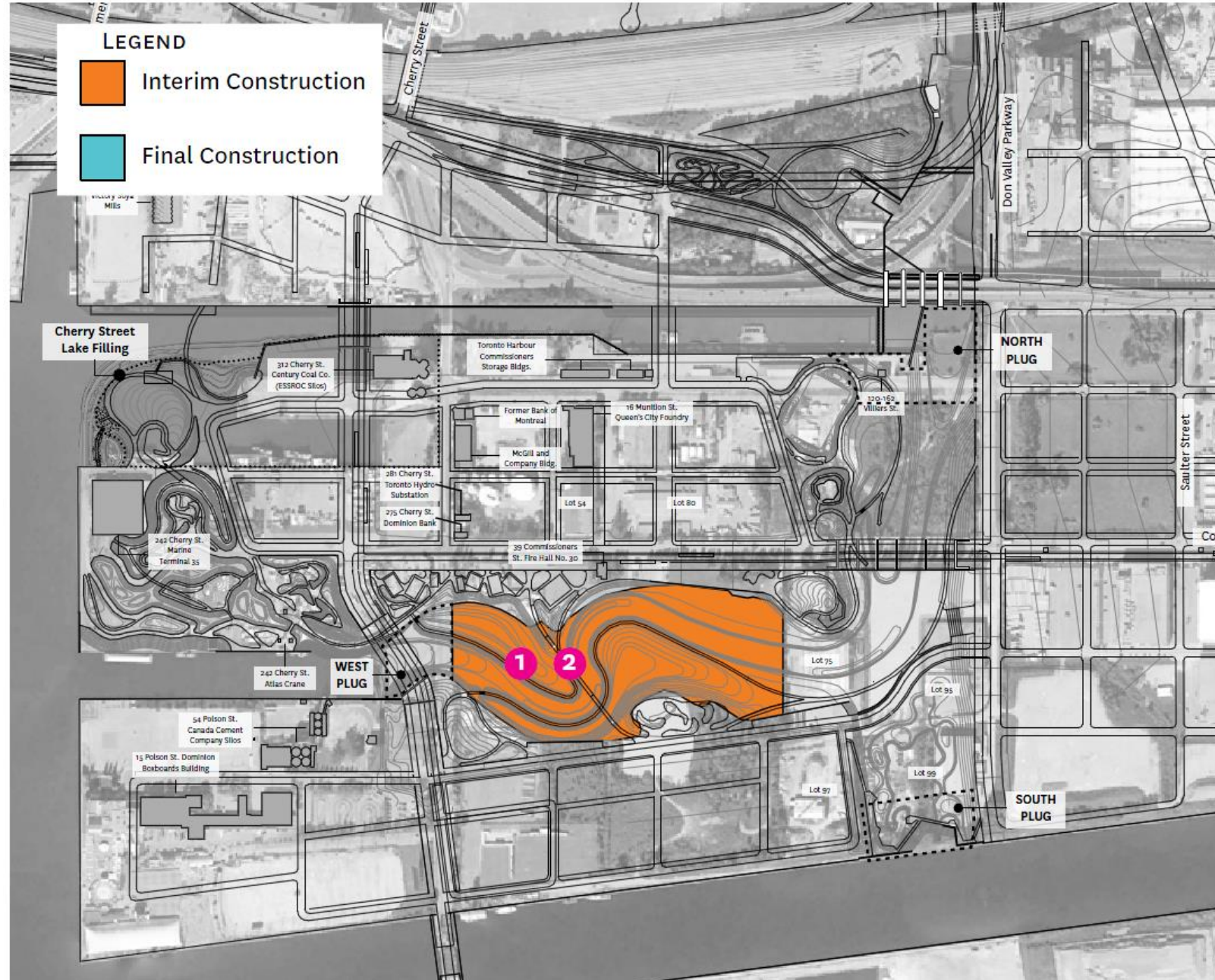


Construction Activities

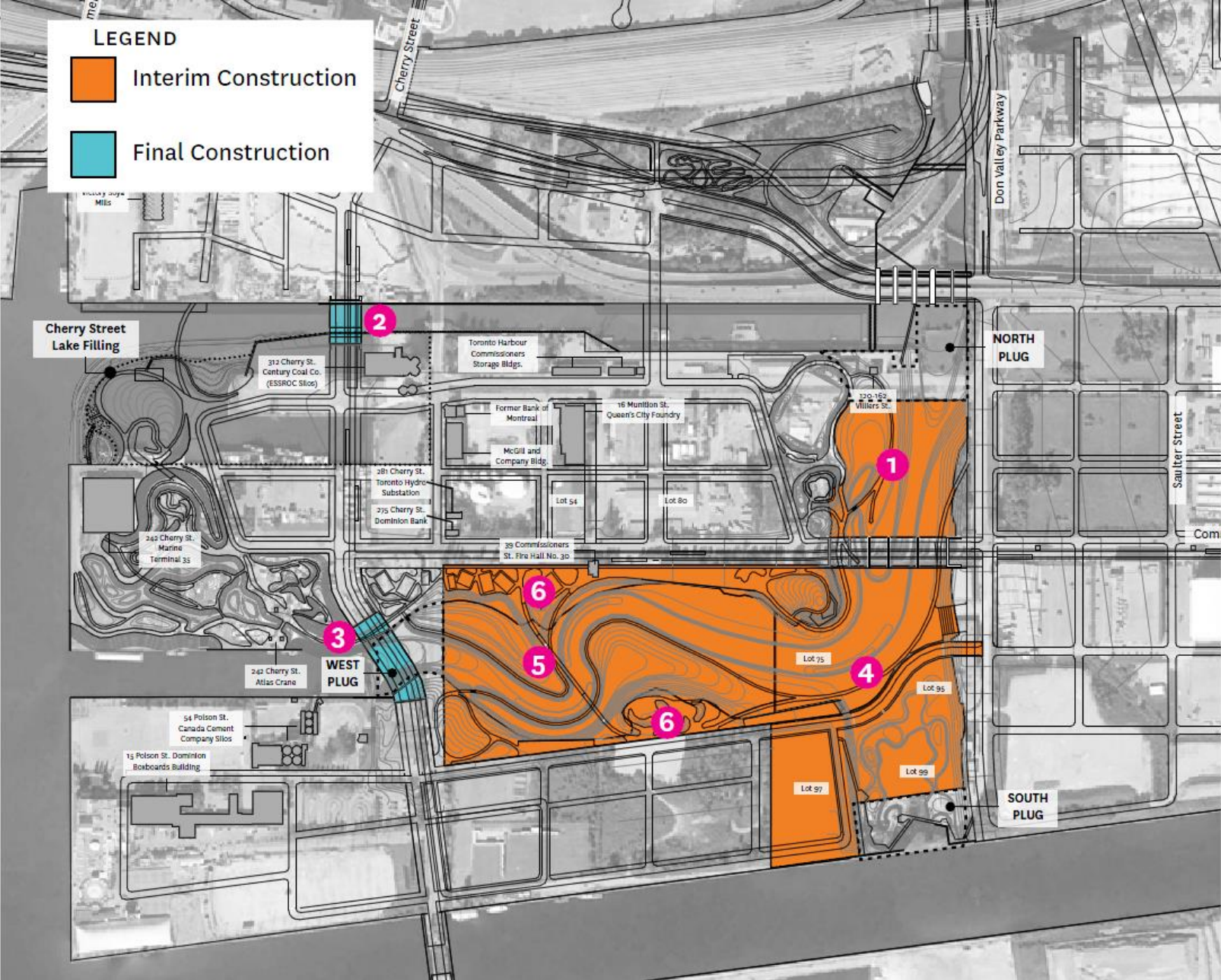
- Work will include:
- Excavating 1,000 cubic metres of soil each day
- Treatment and storage of soil and water on site
- Large amounts of truck deliveries on a daily basis
- Rebuilding sections of Don Roadway, Cherry and Commissioners Streets
- Removing portions of Villiers Street
- Raising grades on the new Villiers Island and east of the Don Roadway



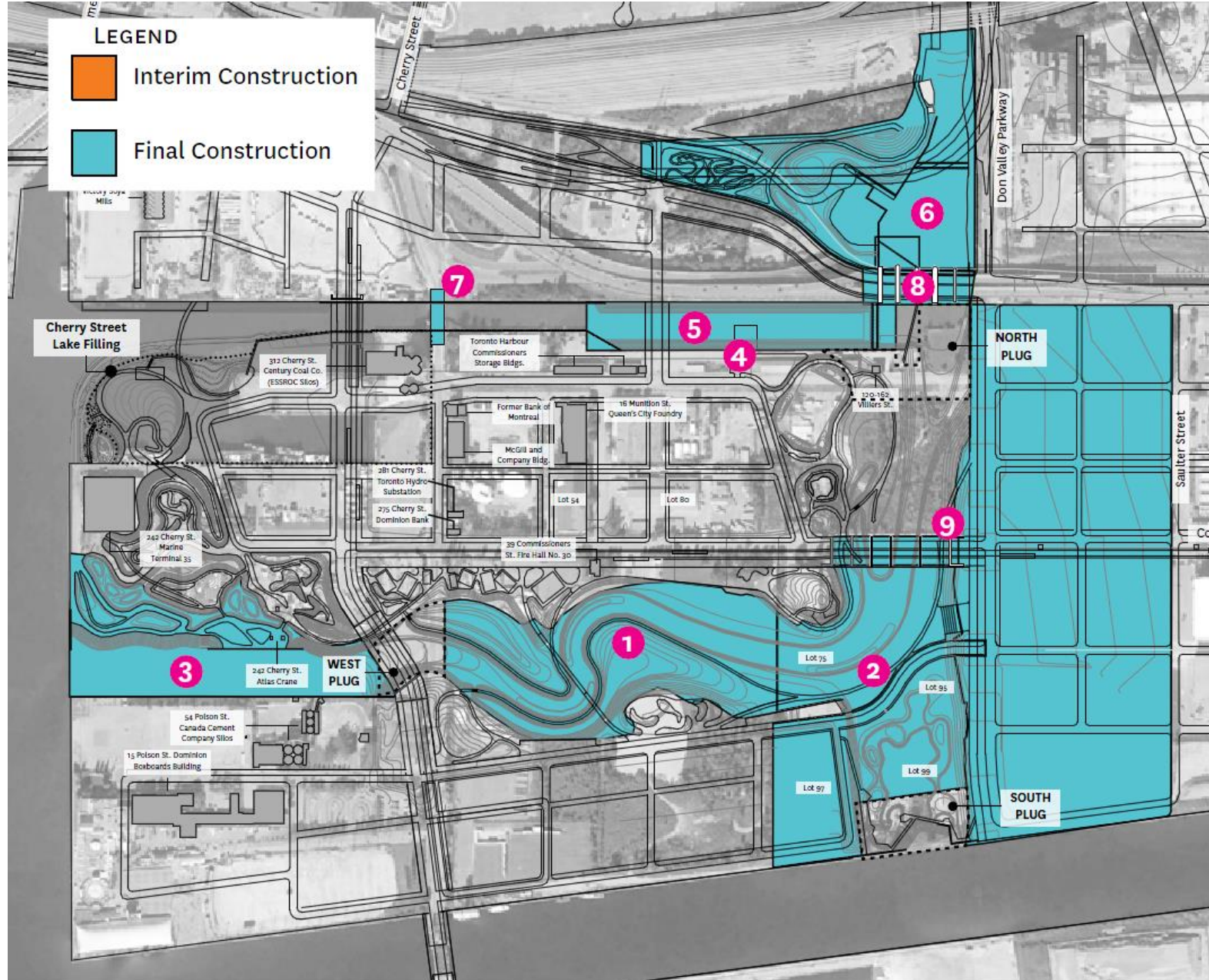
Anticipated Construction - 2018



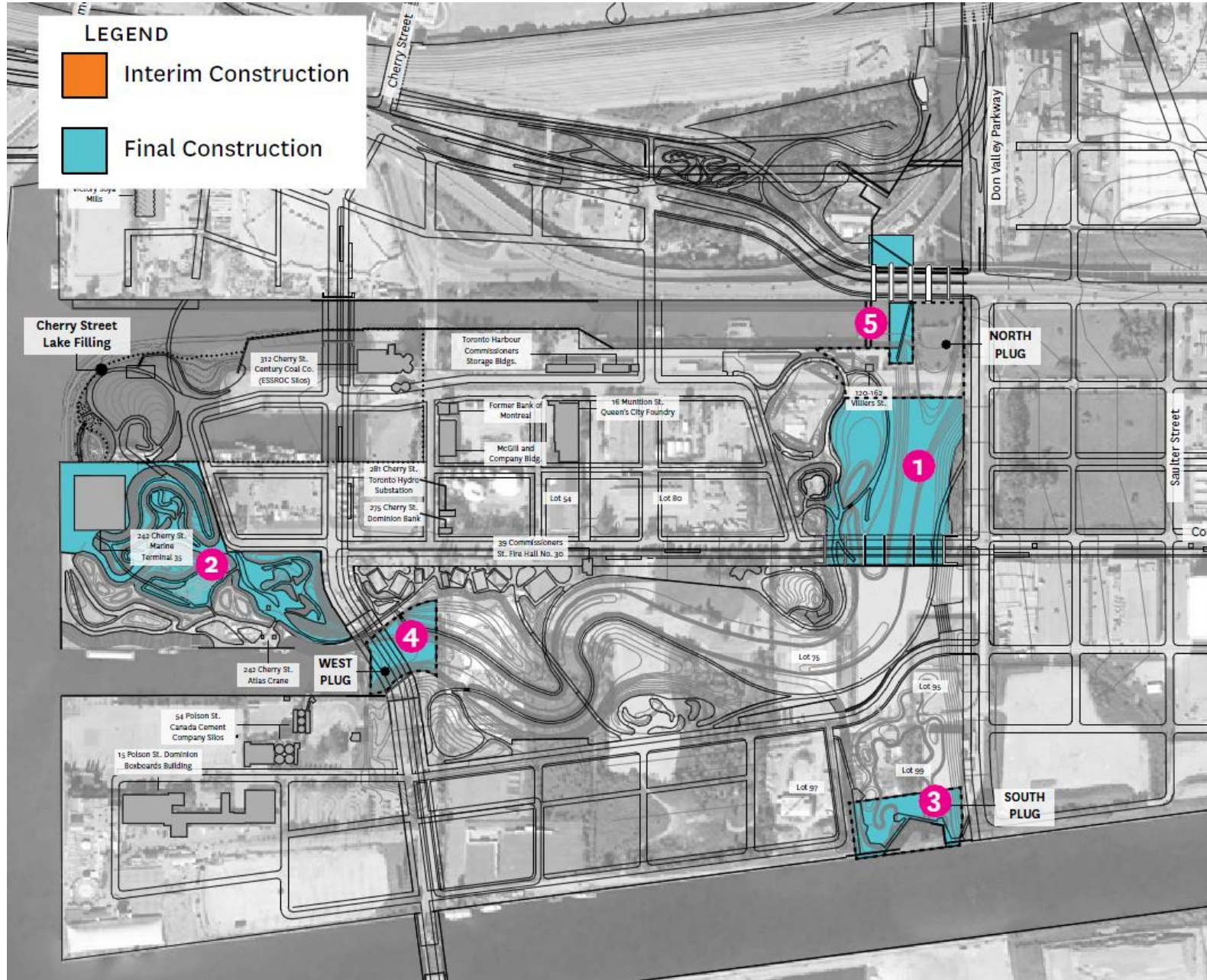
Anticipated Construction - 2019



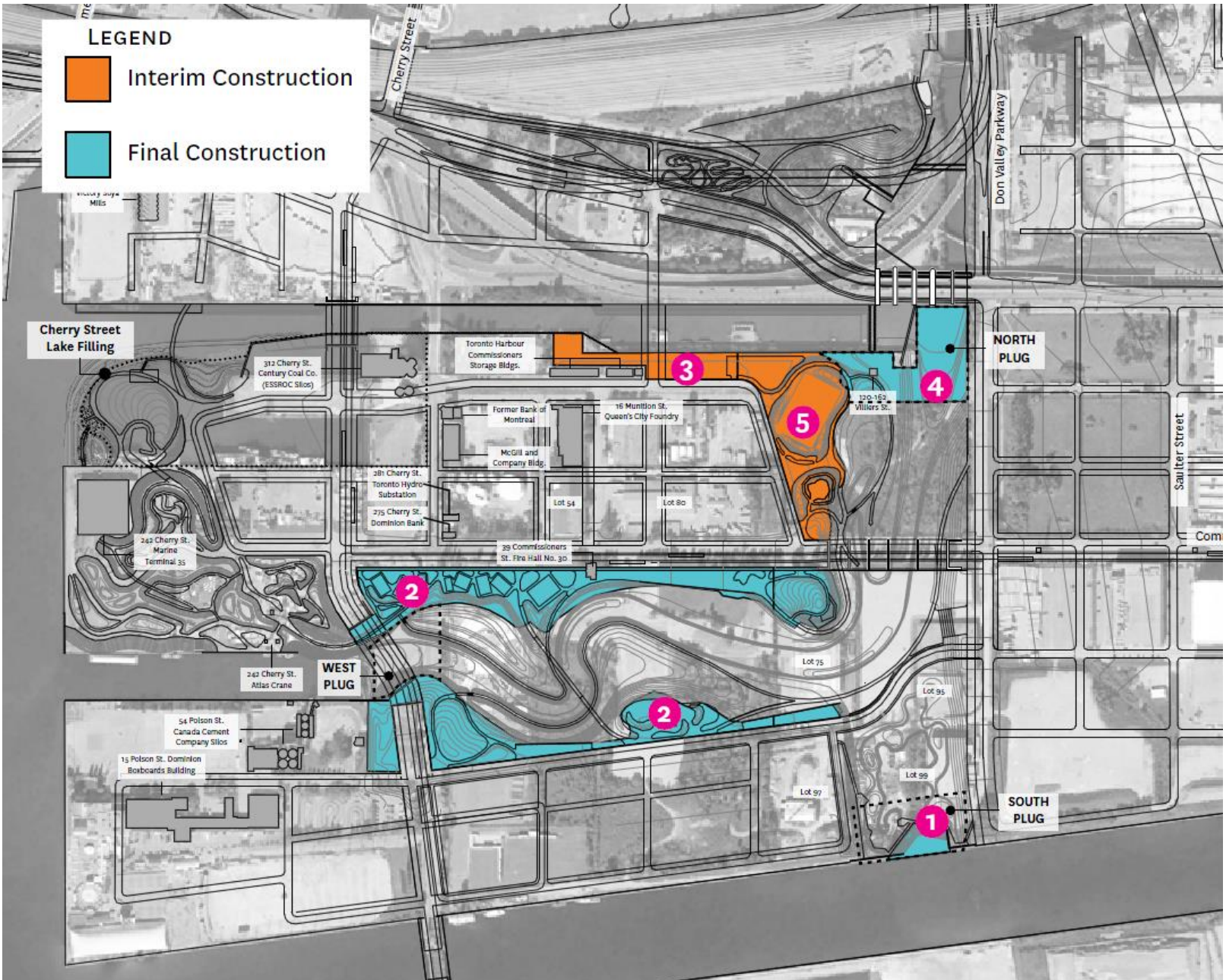
Anticipated Construction 2020



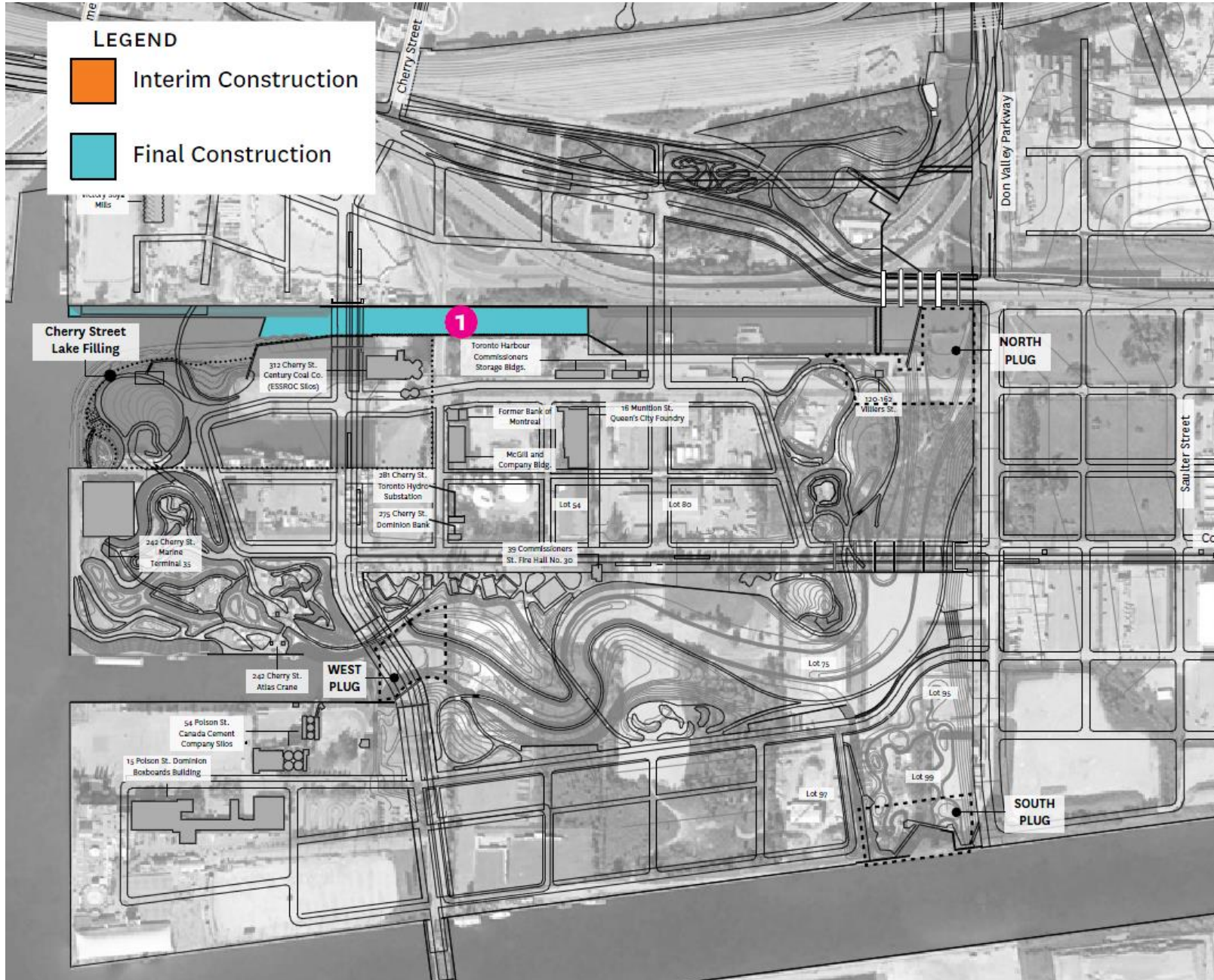
Anticipated Construction - 2021



Anticipated Construction - 2022



Anticipated Construction - 2023



Planning for Construction

- The Don Mouth Naturalization and Flood Protection Environmental Assessment (DMNP EA) was approved by the Ministry of Environment and Climate Change in 2015
- The DMNP EA set plans for creating a healthier, more naturalized outlet for the Don River and flood protecting Toronto's eastern waterfront and identified potential construction impacts
- We are now developing plans to manage any potential impacts
- Details will emerge as we finalize our construction plan

Construction Liaison Committee (CLC)

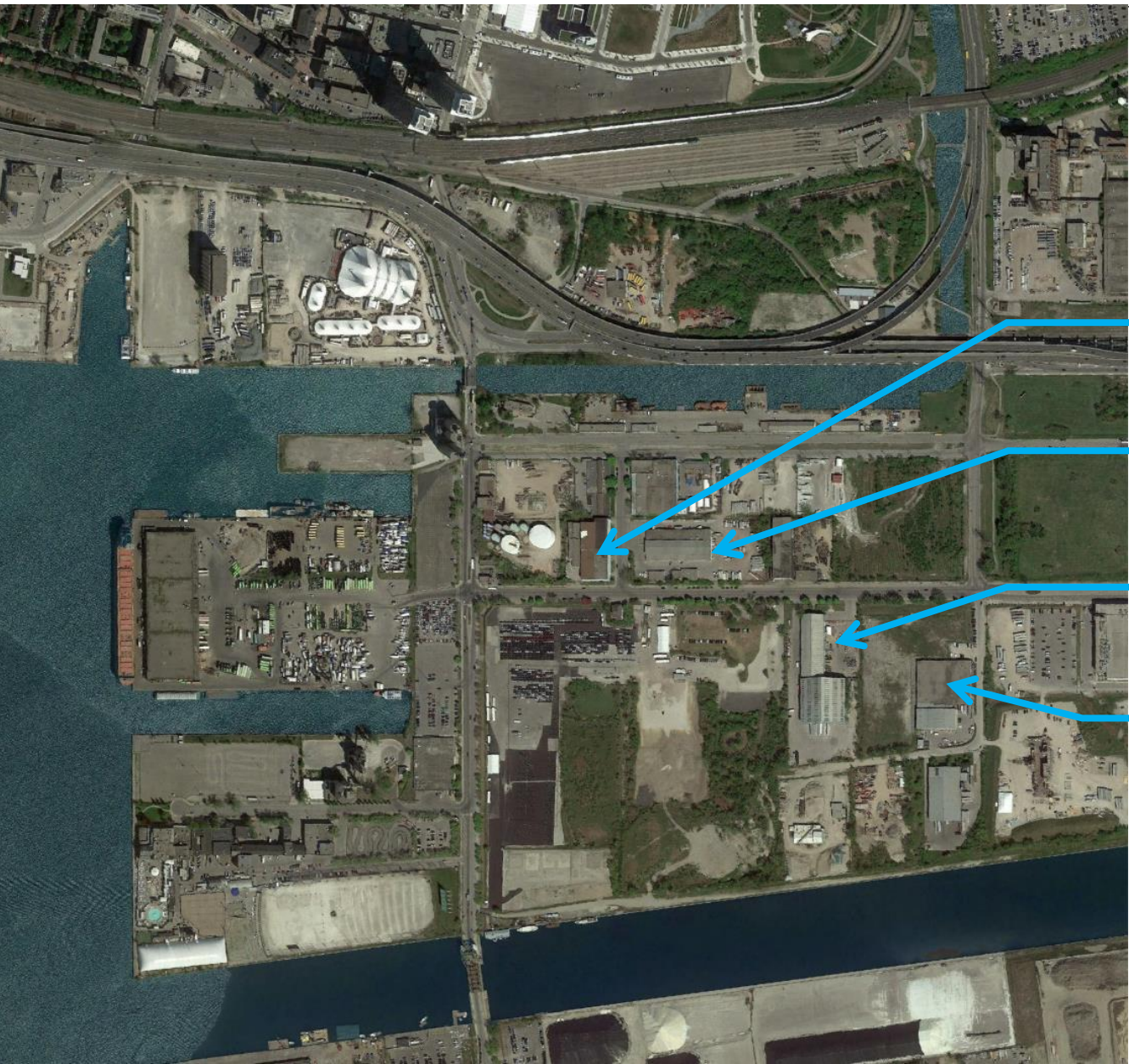
Will include local residents and businesses

Regular meetings with the project team and construction manager (EllisDon) to:

- Discuss construction activities and updates
- Develop plans to manage potential construction impacts
- Ensure that surrounding communities are aware of upcoming construction

Questions?

The Port Lands



Properties within the project area include:

54 Commissioners Street

80 Commissioners Street

75 Commissioners Street

95 Commissioners Street