

Revitalizing Toronto's Waterfront, Redefining Our Future



WATERFRONToronto

Central Waterfront

East Bayfront

West Don Lands



Toronto's Inner Harbour

**City
Airport**

Lower Don Lands

LOWER DON LANDS TODAY



WATERFRONToronto

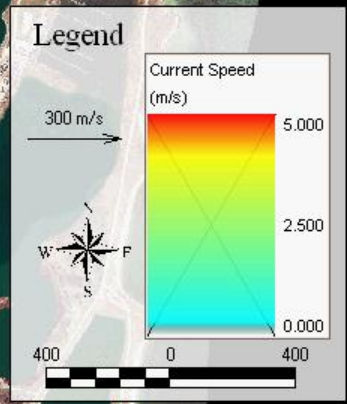
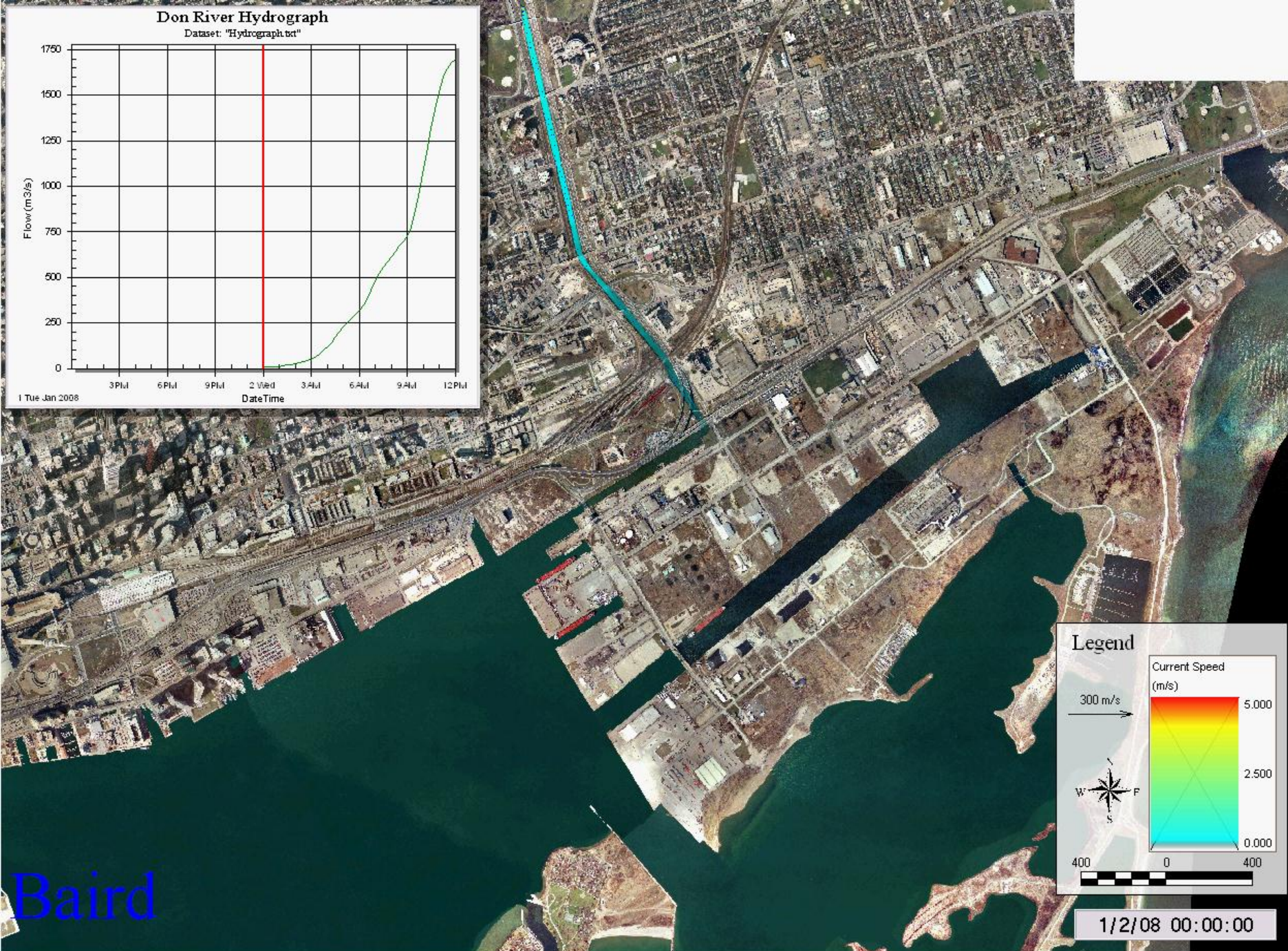
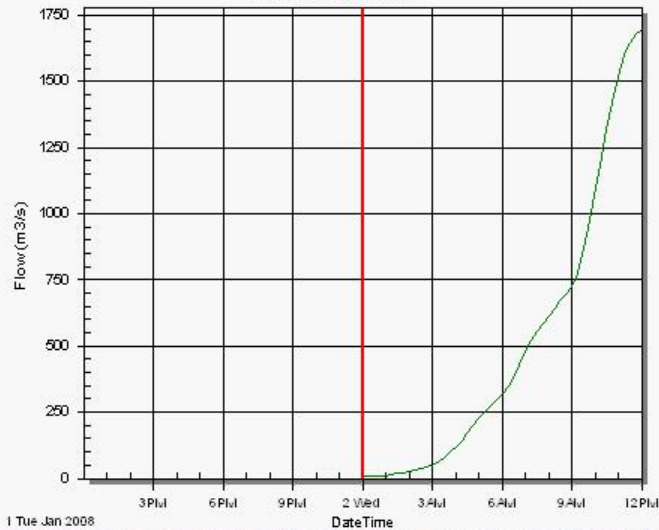


LOWER DON LANDS VISION



Don River Hydrograph

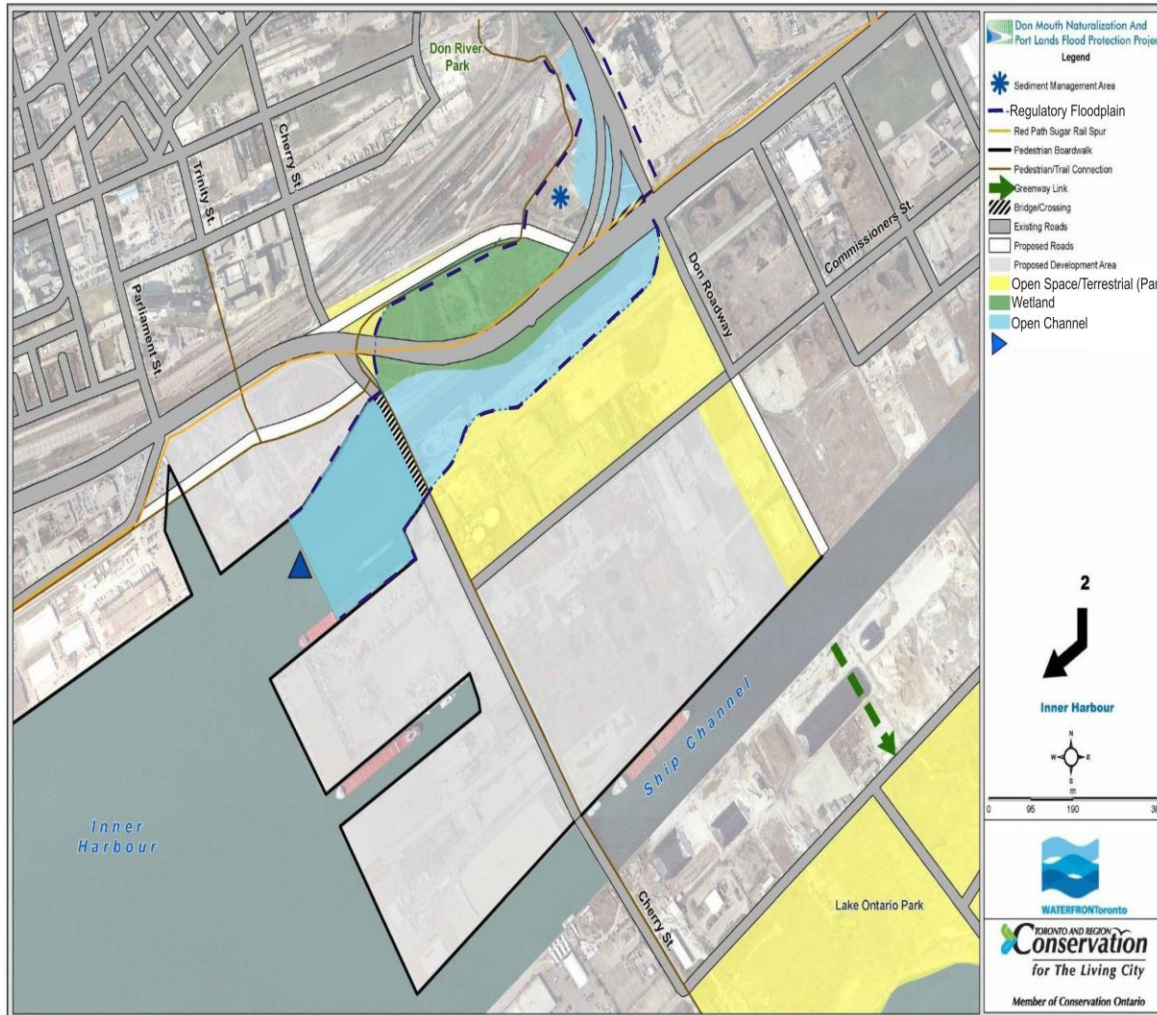
Dataset: "Hydrograph.txt"



1/2/08 00:00:00

Baird

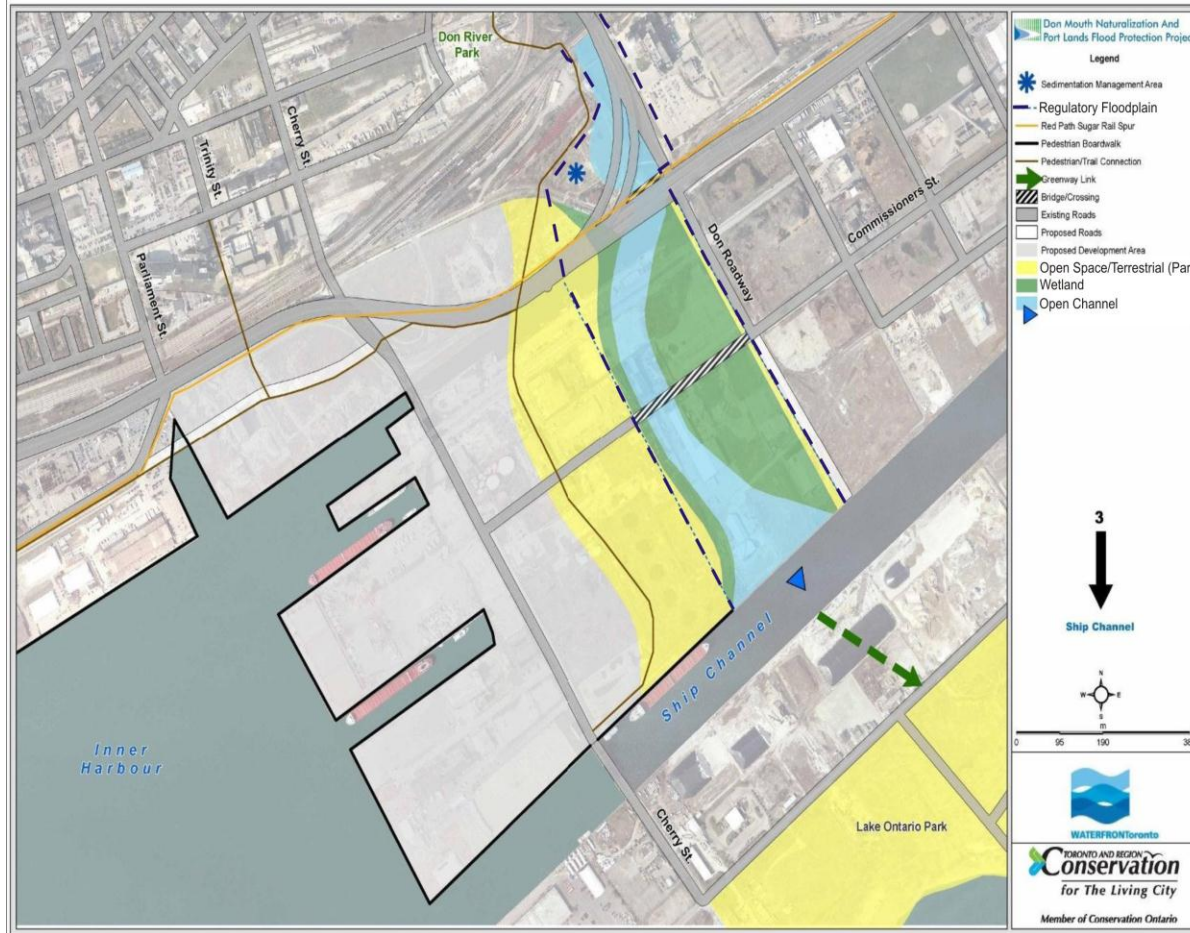
PORT LANDS/LOWER DON LANDS – ALTERNATIVE CHART JUNE 10, 2011 – DRAFT **ALTERNATIVE 2**



Legend

-  Sediment Management Area
-  Regulatory Floodplain
-  Rail Spur
-  Pedestrian Boardwalk
-  Pedestrian/Trail Connection
-  Greenway Link
-  Bridge/Crossing
-  Existing Roads
-  Proposed Roads
-  Proposed Development Area
-  Open Space/Terrestrial (Park)
-  Wetland
-  Open Channel
-  Low Flow Channel

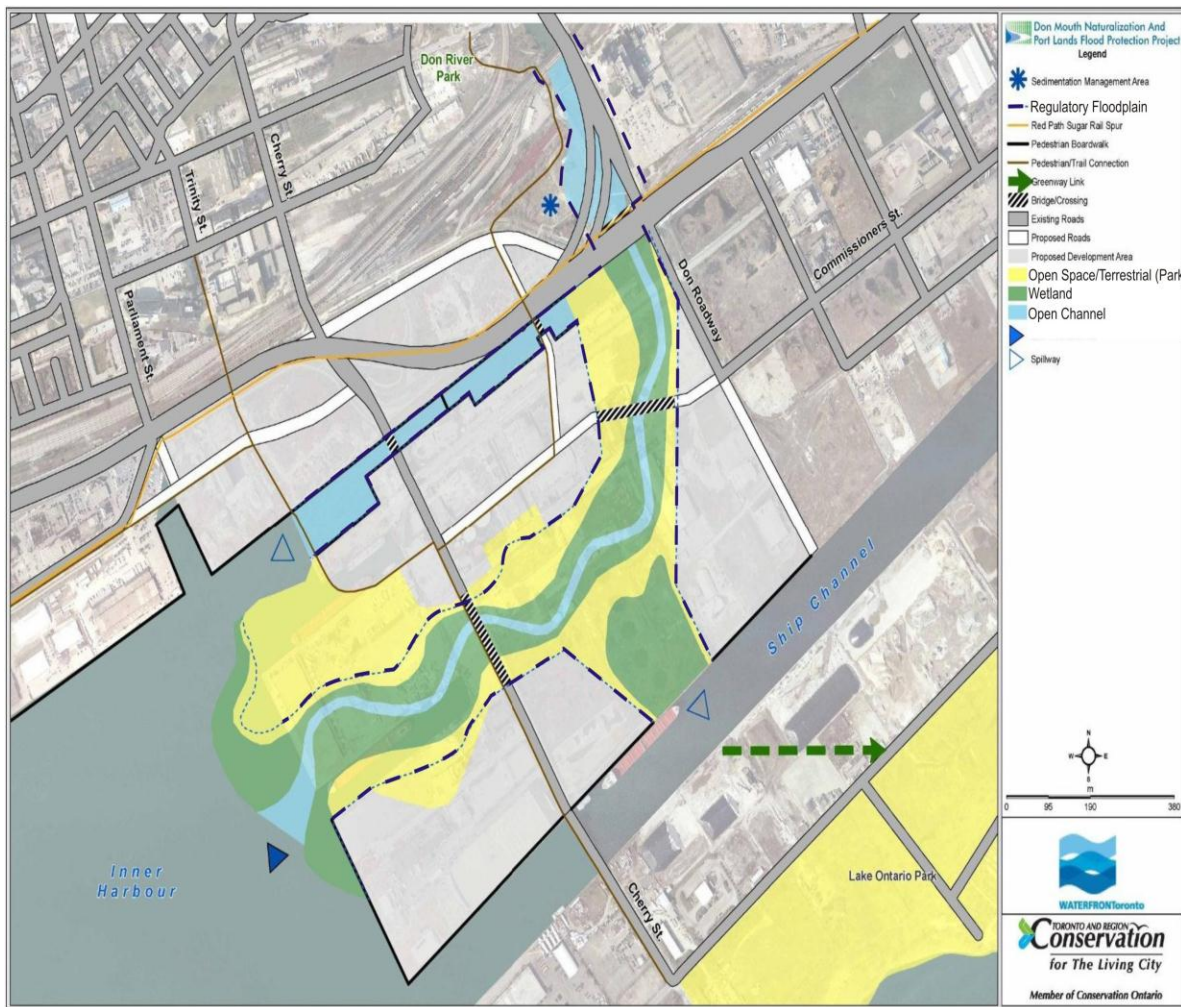
PORT LANDS/LOWER DON LANDS – ALTERNATIVE FACTS JUNE 10, 2011 – DRAFT **ALTERNATIVE 3**



Legend

- Sediment Management Area
- Regulatory Floodplain
- Rail Spur
- Pedestrian Boardwalk
- Pedestrian/Trail Connection
- Greenway Link
- Bridge/Crossing
- Existing Roads
- Proposed Roads
- Proposed Development Area
- Open Space/Terrestrial (Park)
- Wetland
- Open Channel
- Low Flow Channel

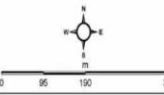
PORT LANDS/LOWER DON LANDS – ALTERNATIVE FACTS JUNE 10, 2011 – DRAFT **ALTERNATIVE 4WS**



Legend

-  Sediment Management Area
-  Regulatory Floodplain
-  Rail Spur
-  Pedestrian Boardwalk
-  Pedestrian/Trail Connection
-  Greenway Link
-  Bridge/Crossing
-  Existing Roads
-  Proposed Roads
-  Proposed Development Area
-  Open Space/Terrestrial (Park)
-  Wetland
-  Open Channel
-  Low Flow Channel

0 95 190 380



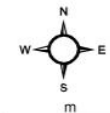
WATERFRONTToronto

TORONTO AND REGION
Conservation
for The Living City

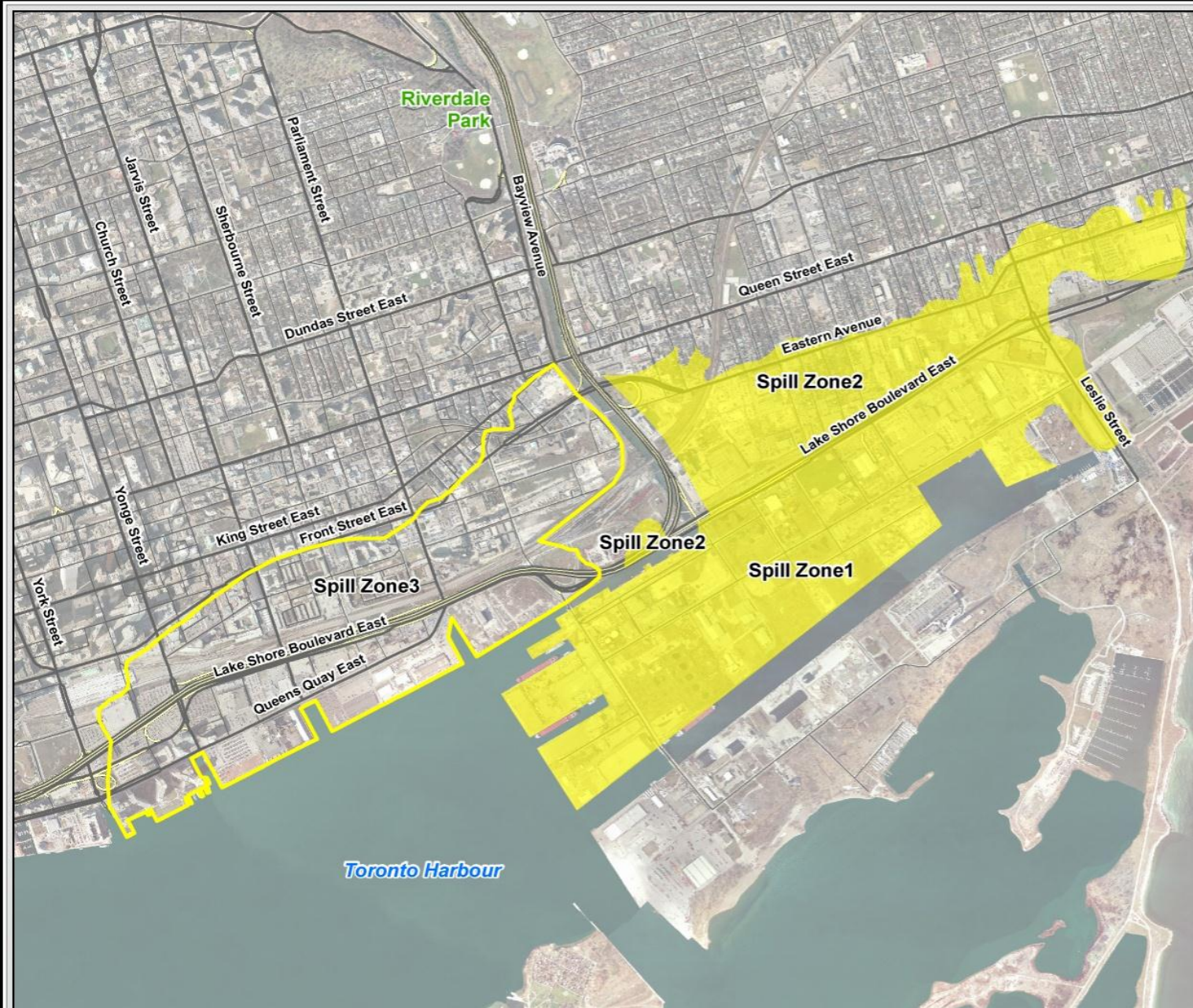
Member of Conservation Ontario

Legend

- Spill Zone1 and 2
- Spill Zone 3

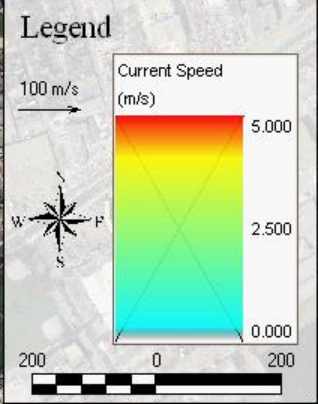
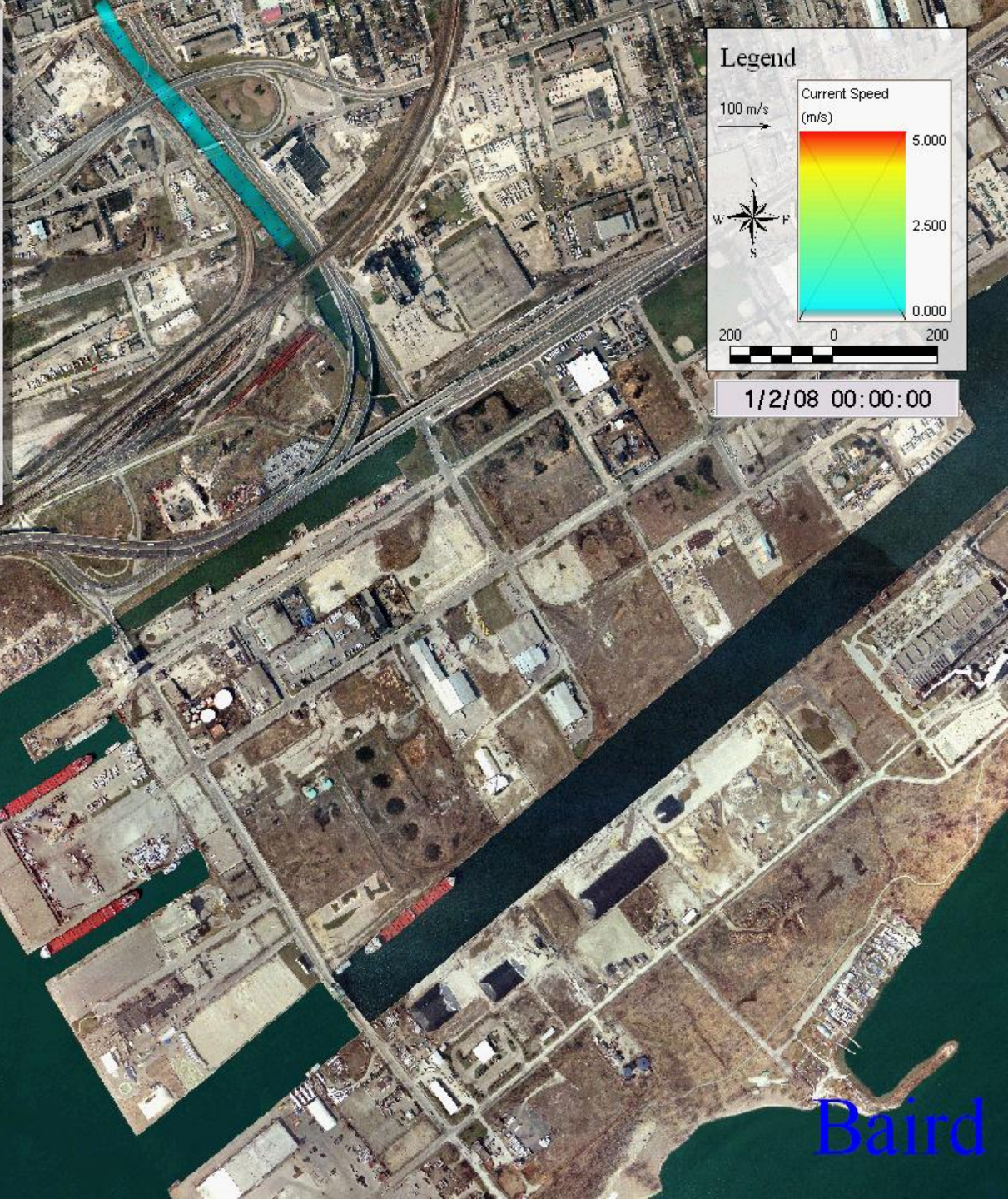
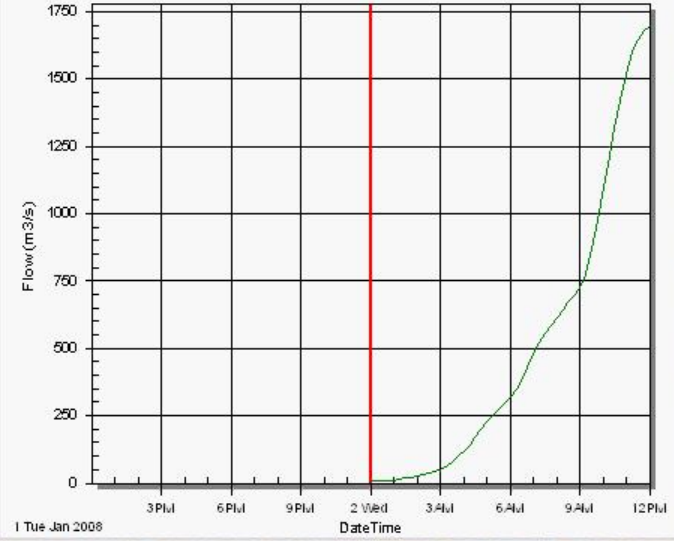


0 125 250 500 750 1,000



Don River Hydrograph

Dataset: "Hydrograph.txt"

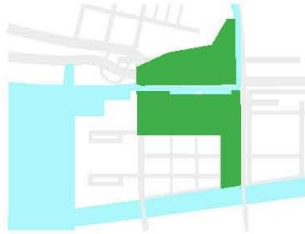


1/2/08 00:00:00

Baird

Central Waterfront Secondary Plan

**Park and
Open Space
Area**



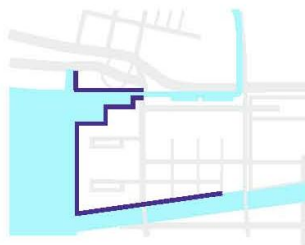
100 Acres
(40.5 Hectares)

Water Area



25 Acres
(10.1 Hectares)

**Waterfront
Development**



3050
Linear Metres

Lower Don Lands



130 Acres
(52.6 Hectares)






















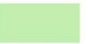



35 Acres
(14.2 Hectares)



5200
Linear Metres

Comprehensive Flood Protection and Development Plan Approved

KEY

-  Heritage Structure
-  Retail
-  LRT Stop
-  Bicycle Trail
-  School and/or Community Center
-  Day Care
-  Environmental and Cultural Special Uses
-  Library
-  Special Commercial Use
-  Small Boat Launch
-  Small Boating
-  Party Boats
-  Court Sports
-  Geographic Feature
-  Wooded Prospect
-  Passive Use Lawn
-  Multiuse Recreation (Active)
-  Esplanade
-  Playground
-  Public Garden
-  Event Space
-  Open Space
-  Water Access



LOWER DON LANDS TEAM

Project Partners

**City of Toronto, TRCA,
TTC, Province of Ontario,
Government of Canada**

Project Lead

**Brenda Webster
Waterfront Toronto**

Design Team Lead + Landscape Architect

Michael Van Valkenburgh Inc.

Design Team

Climate Engineer: Transsolar

Regional Ecologist: AES

River Hydrologist: Limno-Tech, Inc.

Transportation Engineer: Arup

Bridge Engineer: RFR Engineering

Sustainability :Carpenter Norris

Urban Designer:

Greenberg Consultants Inc.

Urban Planner: MMM

Urban Planner: GHK

Civil & Marine Engineer: AECOM

LOWER DON LANDS AWARDS

2011

OPPI Award

2010

**Institute of Transportation Engineers
Transportation Achievement Award to Lower
Don Lands**

2009

**American Institute of Architects Merit Award
for Lower Don Lands**

**BEX International Award for Best Futuristic
Design for the Lower Don Lands Plan**

2008

**Royal Architectural Institute of Canada's
Sustainable Development Award for MVVA's
Lower Don Lands design**

**American Society of Landscape Architects
Honor in Analysis and Planning: Reinventing
the Don River as an Agent of Urbanism**

2007

City of Toronto Urban Design Award