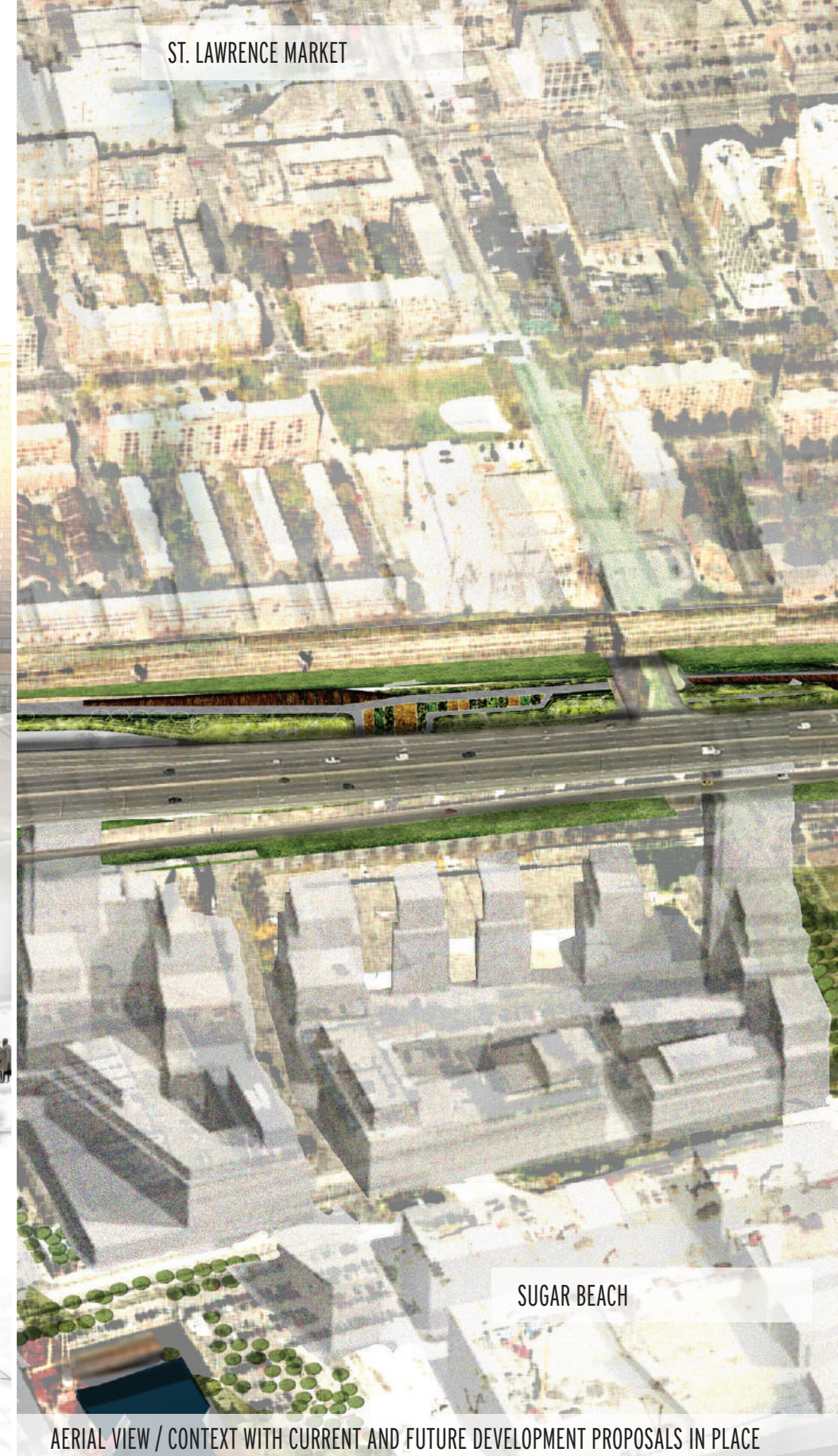




VIEW / FROM A RESIDENTIAL TOWER BALCONY



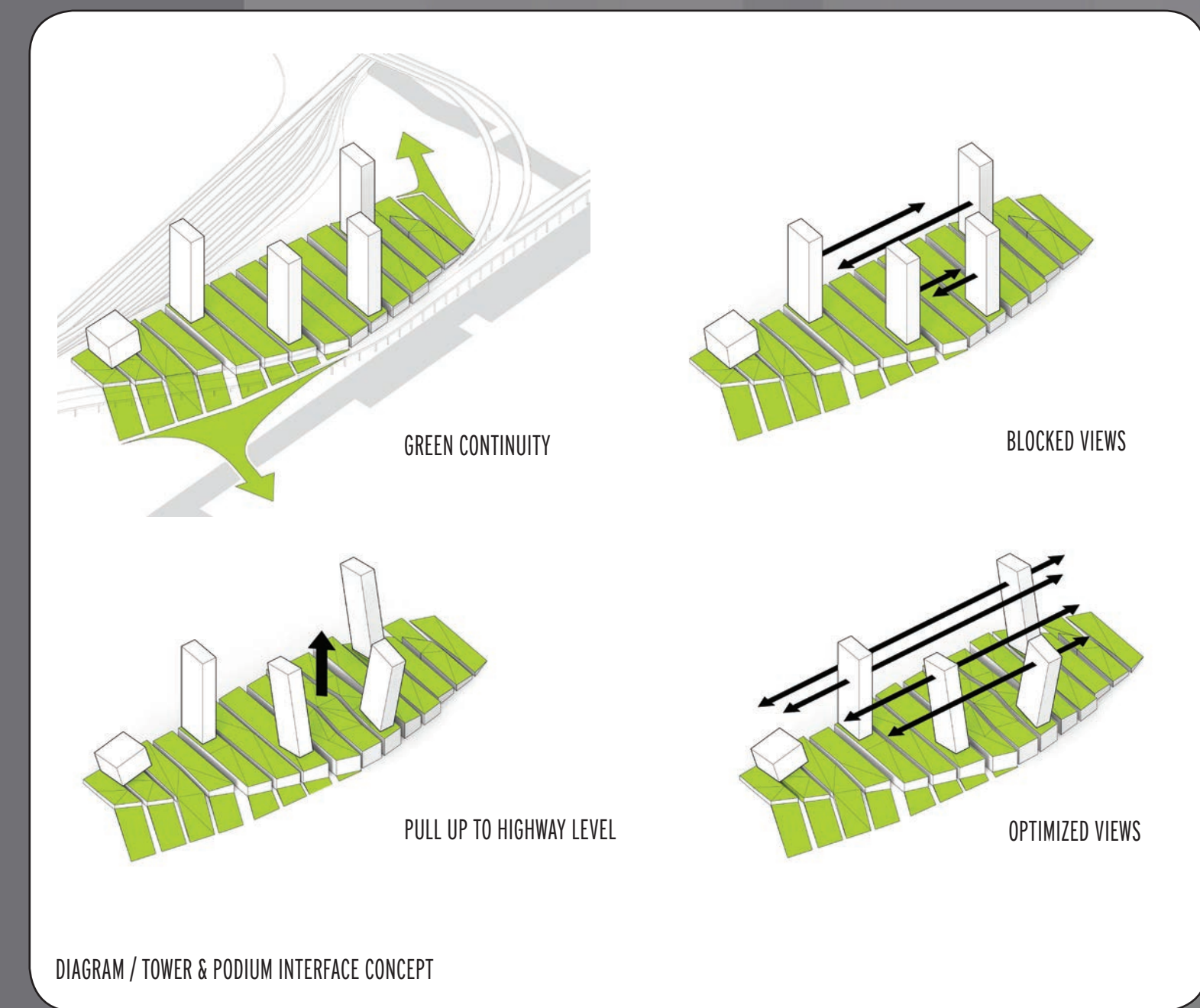
VIEW / WINTER SCENE PARK ON THE NEWLY CREATED TOPOGRAPHY / INHABITED LANDSCAPE



AERIAL VIEW / CONTEXT WITH CURRENT AND FUTURE DEVELOPMENT PROPOSALS IN PLACE

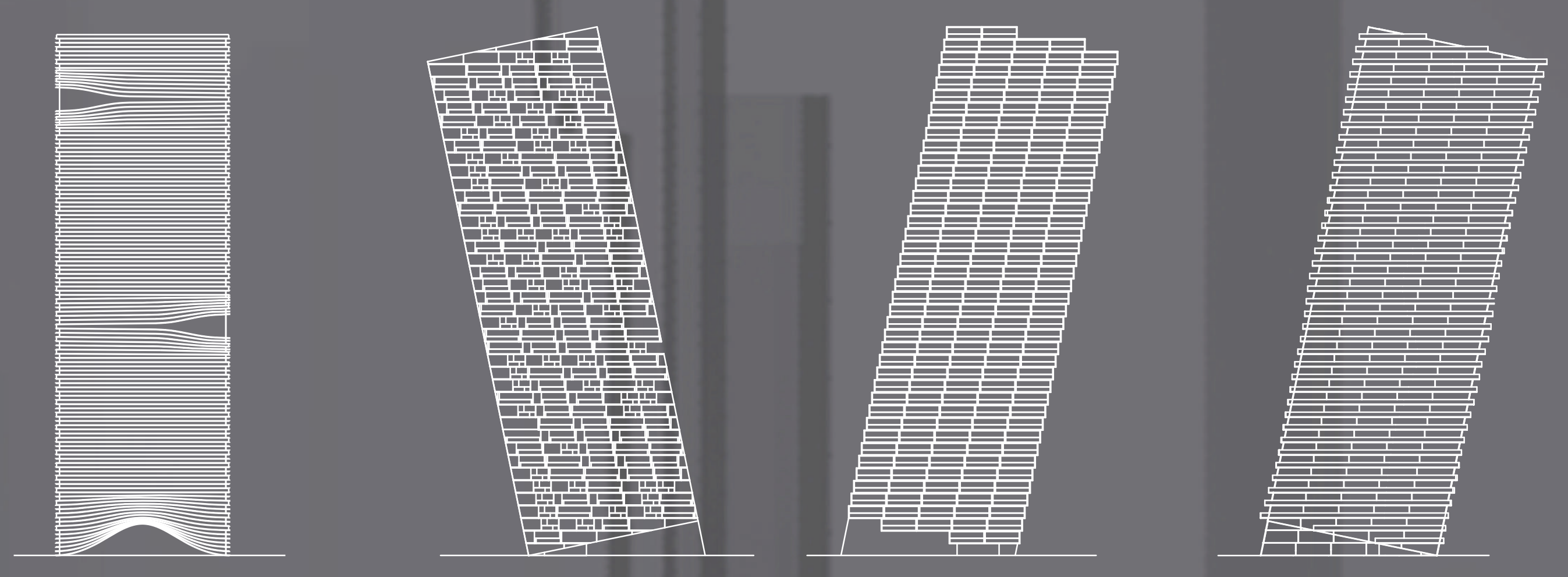
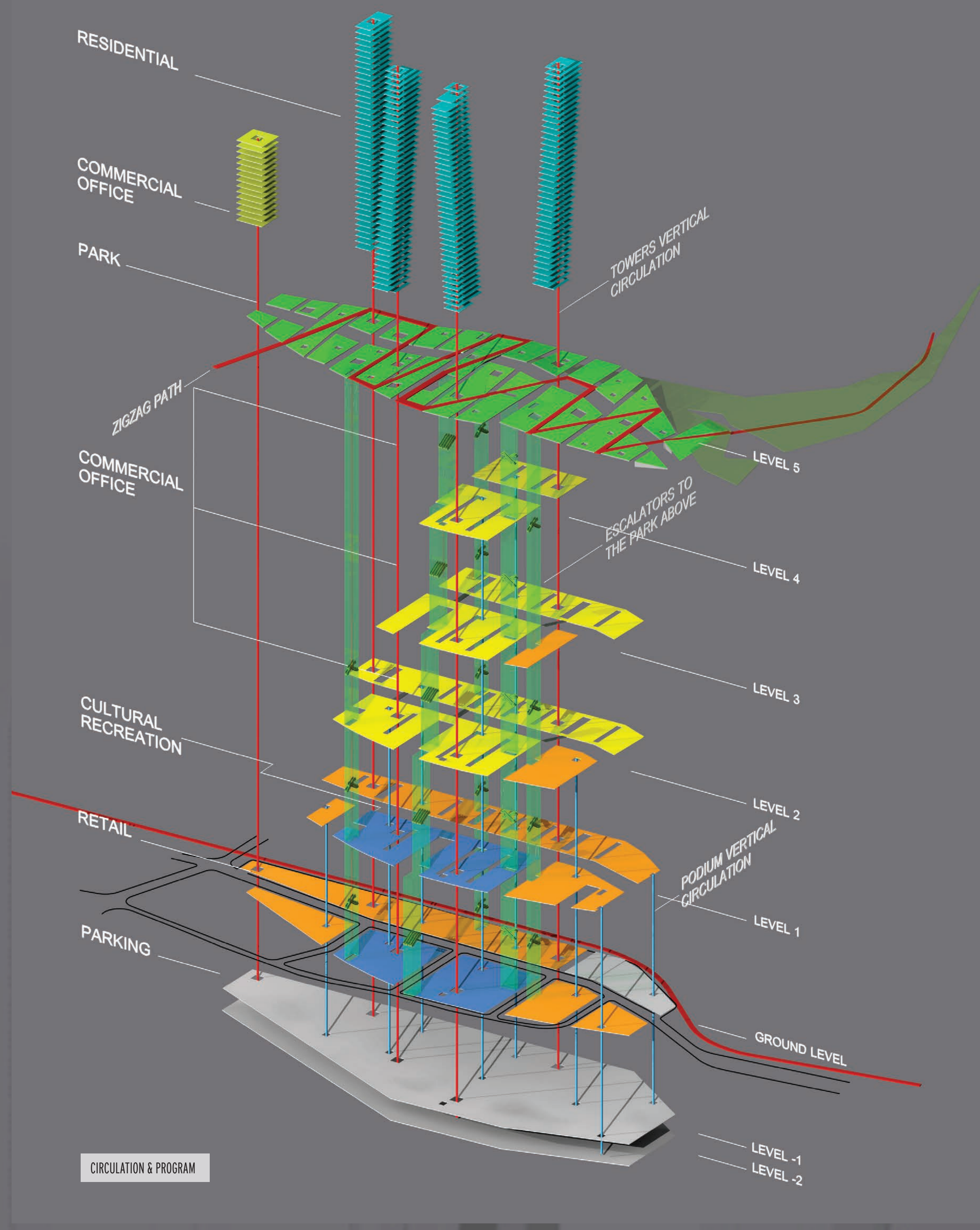
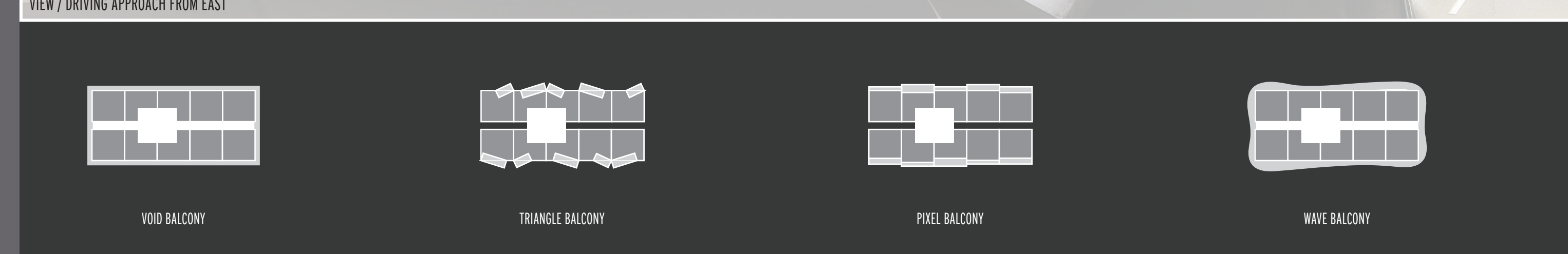
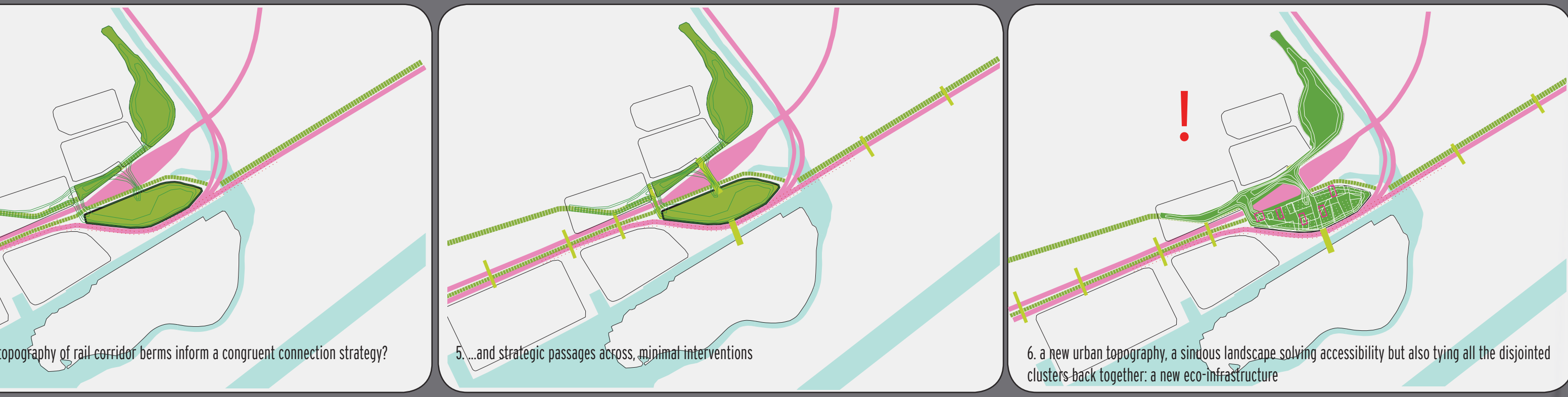
# THE GAR

RECONNECTED.  
We're tying it all together;  
picturing toronto  
as a park city

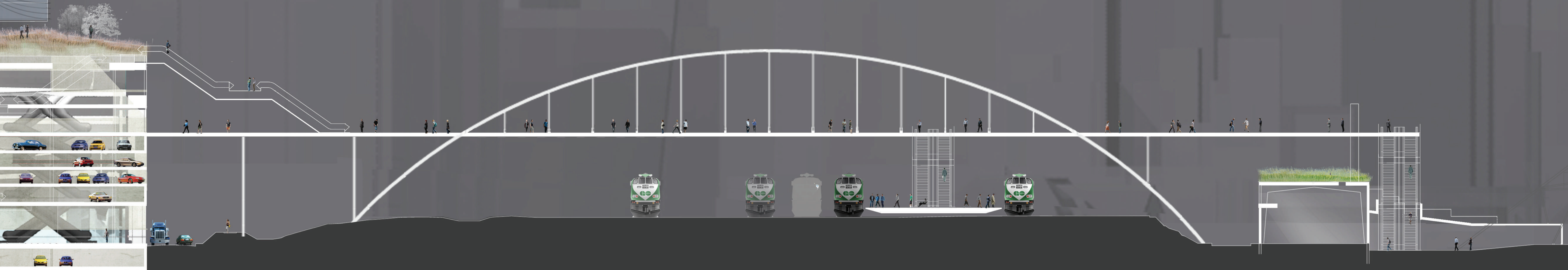


CROSS SECTION / 1:250 THE MOUNTAIN AT 480 LAKESHORE

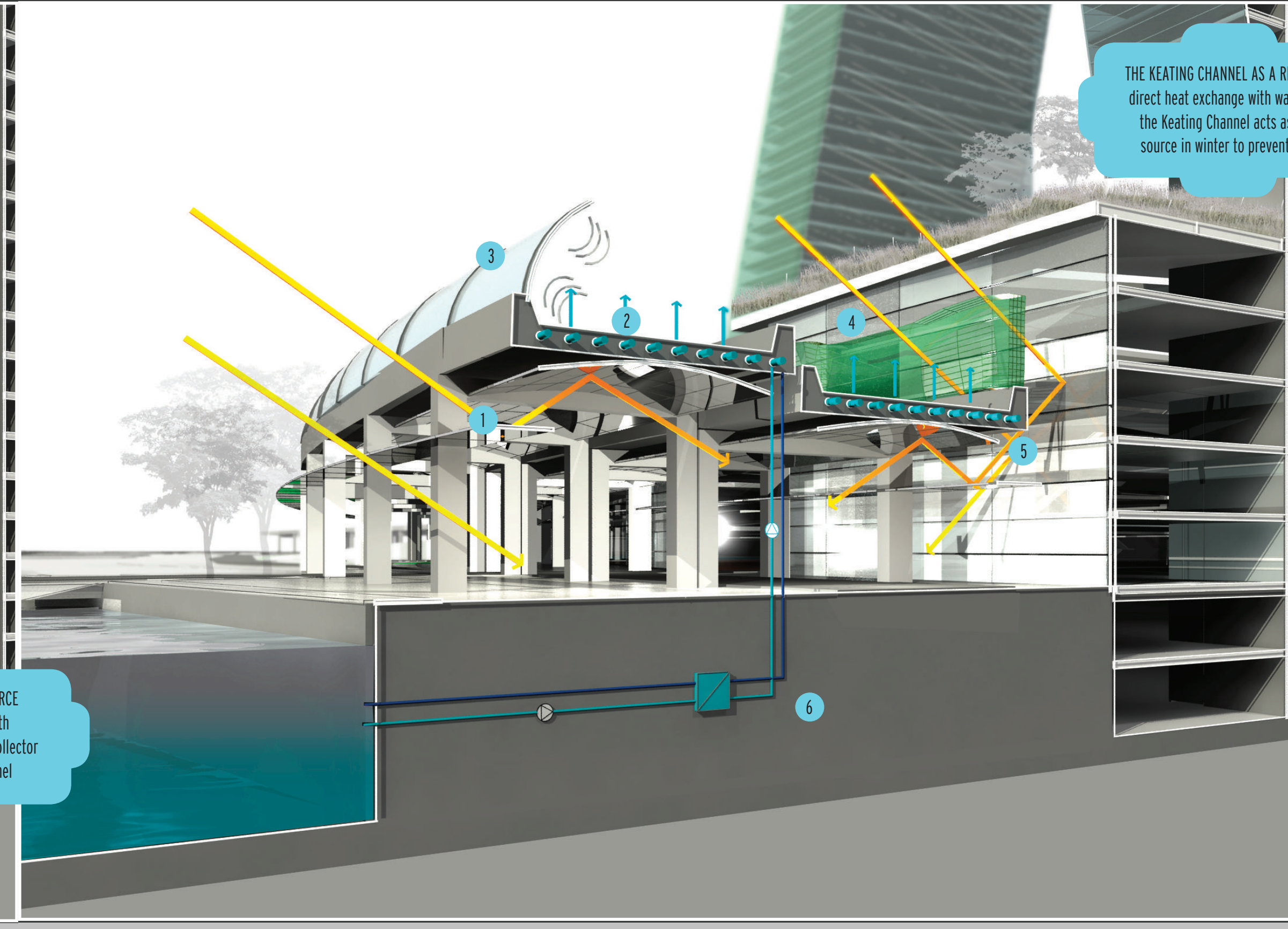
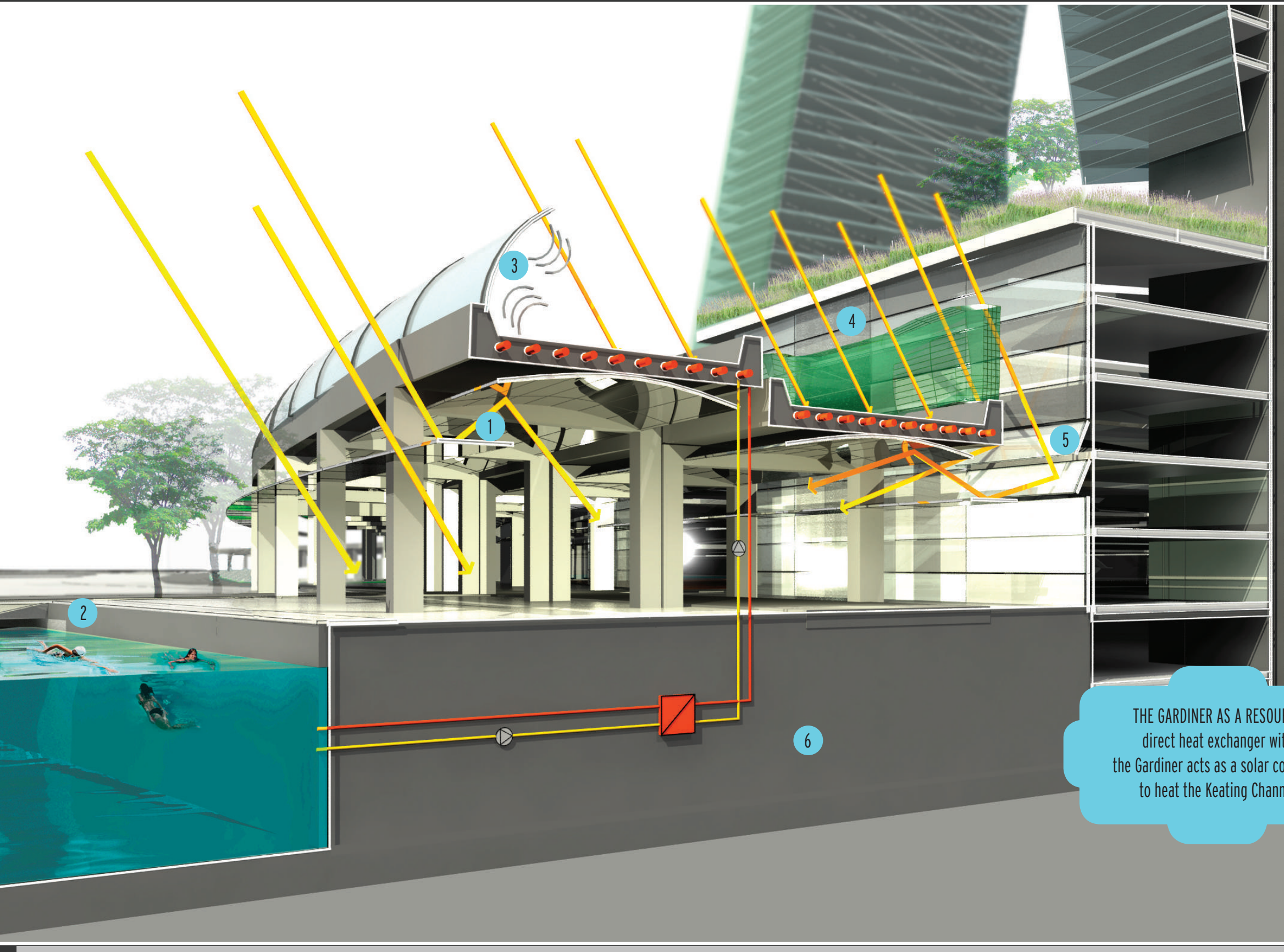
Reconnected. THE GAR provides a New Sectional Relationship between city, motorway and waterfront. Hybrid forms of cross-section



**why not let the public space surround the traffic?**  
 Phasing THE GAR is a process of evolution and acceleration. We're not untying a knot, we're reconnecting it.



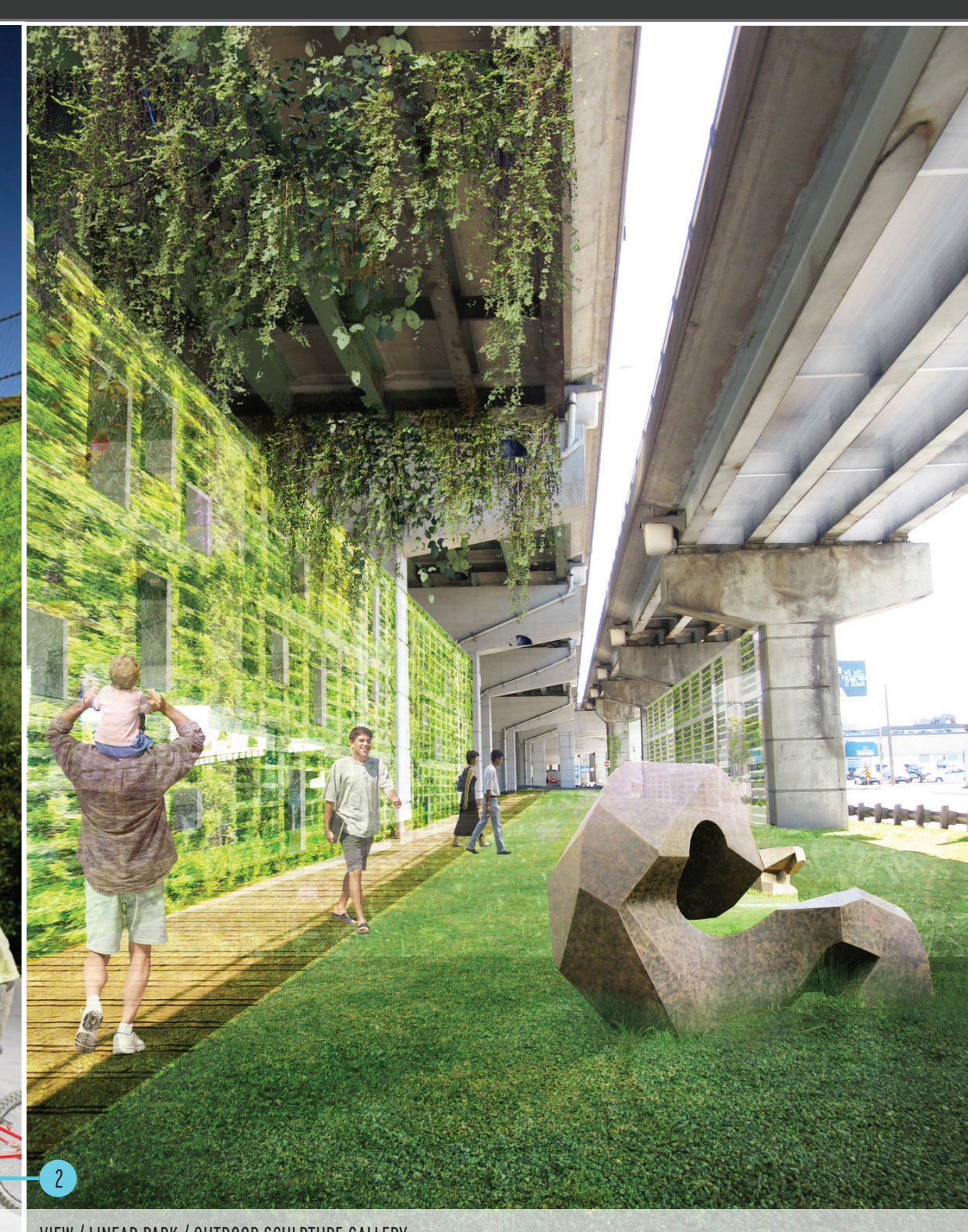
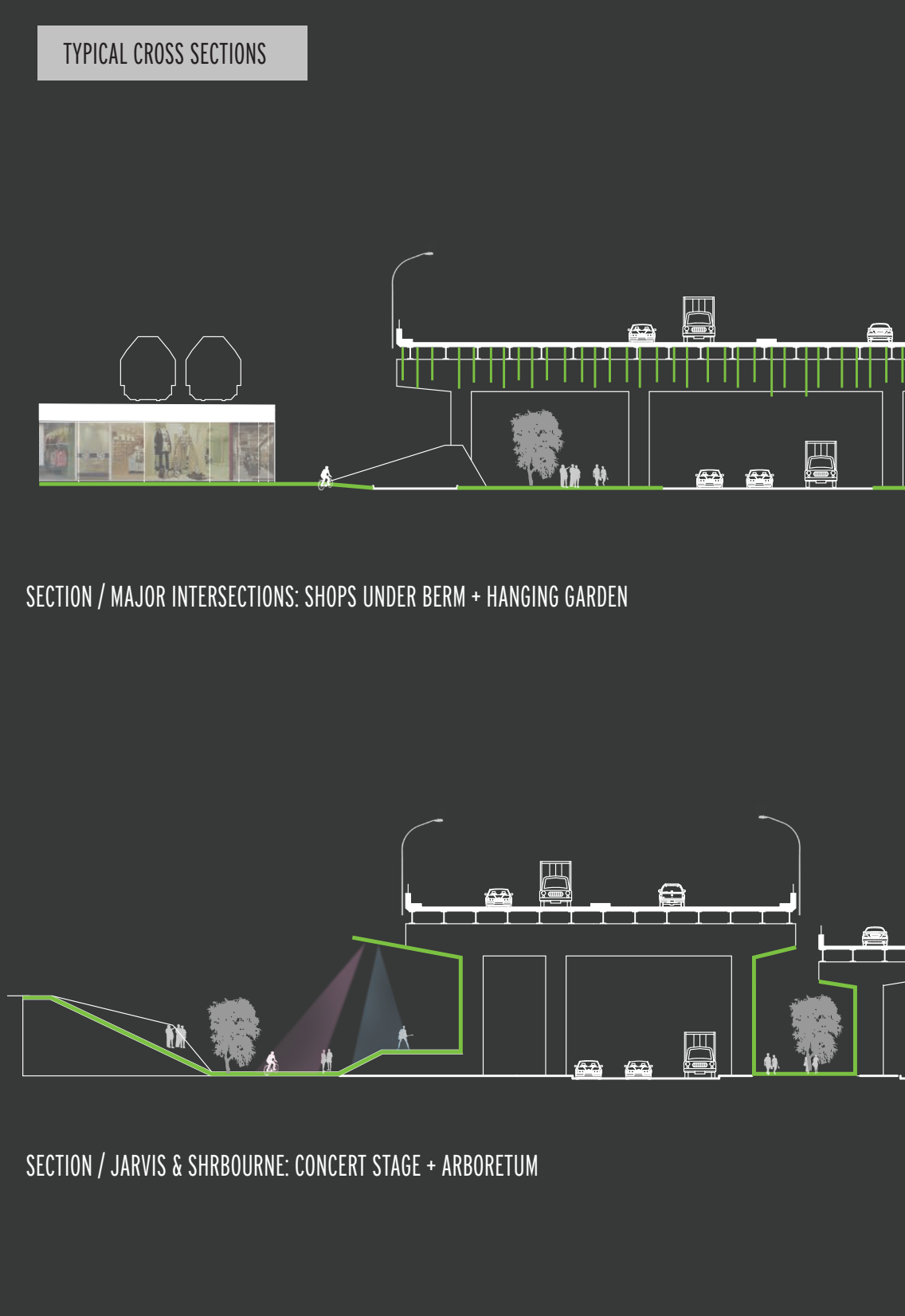
...tions create hybrid structures with multiple programs run between the new mezzanine level, the top of the infrastructure, and the waterfront.



**THE KEATING CHANNEL AS A RESOURCE**  
 direct heat exchange with water from the Keating Channel acts as heat source in winter to prevent frost

**THE GARDINER AS A RESOURCE**  
 direct heat exchanger with the Gardiner acts as a solar collector to heat the Keating Channel

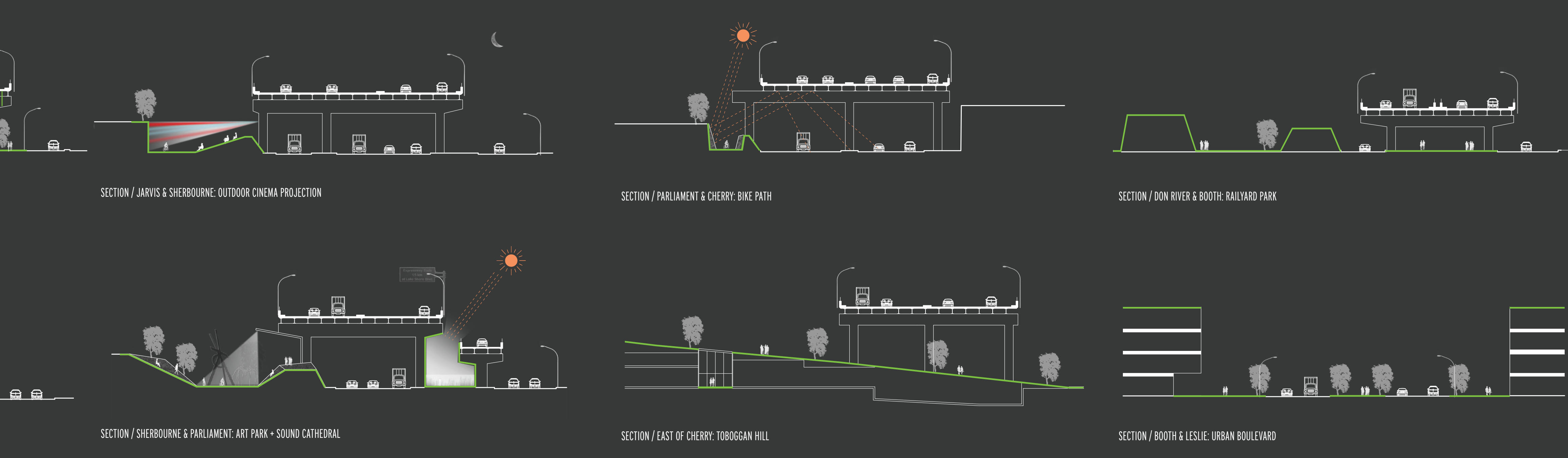
- SUMMER**
1. daylight redirection below the Gardiner
  2. public solar heated spa along the Keating Channel
  3. noise absorbing walls clad with photovoltaics reduce noise and provide maximum yield for green power
  4. living wall to filter sound and improve air quality
  5. automatically adjusting facade awnings enhancing outdoor lighting and quality of the public realm below the Gardiner
  6. direct heat exchange with the Gardiner which acts as solar collector for the heating of the Keating Channel
- WINTER**
1. daylight redirection below the Gardiner
  2. embedded piping in new pavement over Gardiner prevents frost and reduces thermal stress reducing maintenance cost
  3. noise absorbing walls clad with photovoltaics reduce noise and provide maximum yield for green power
  4. living wall to filter sound and improve air quality
  5. highly reflective facade enhancing outdoor lighting and quality of the public realm below the Gardiner
  6. direct heat exchange with the Keating Channel which acts as heat source in winter to prevent frost



**we will use our city differently,** public space will surround the traffic, integrating & inc



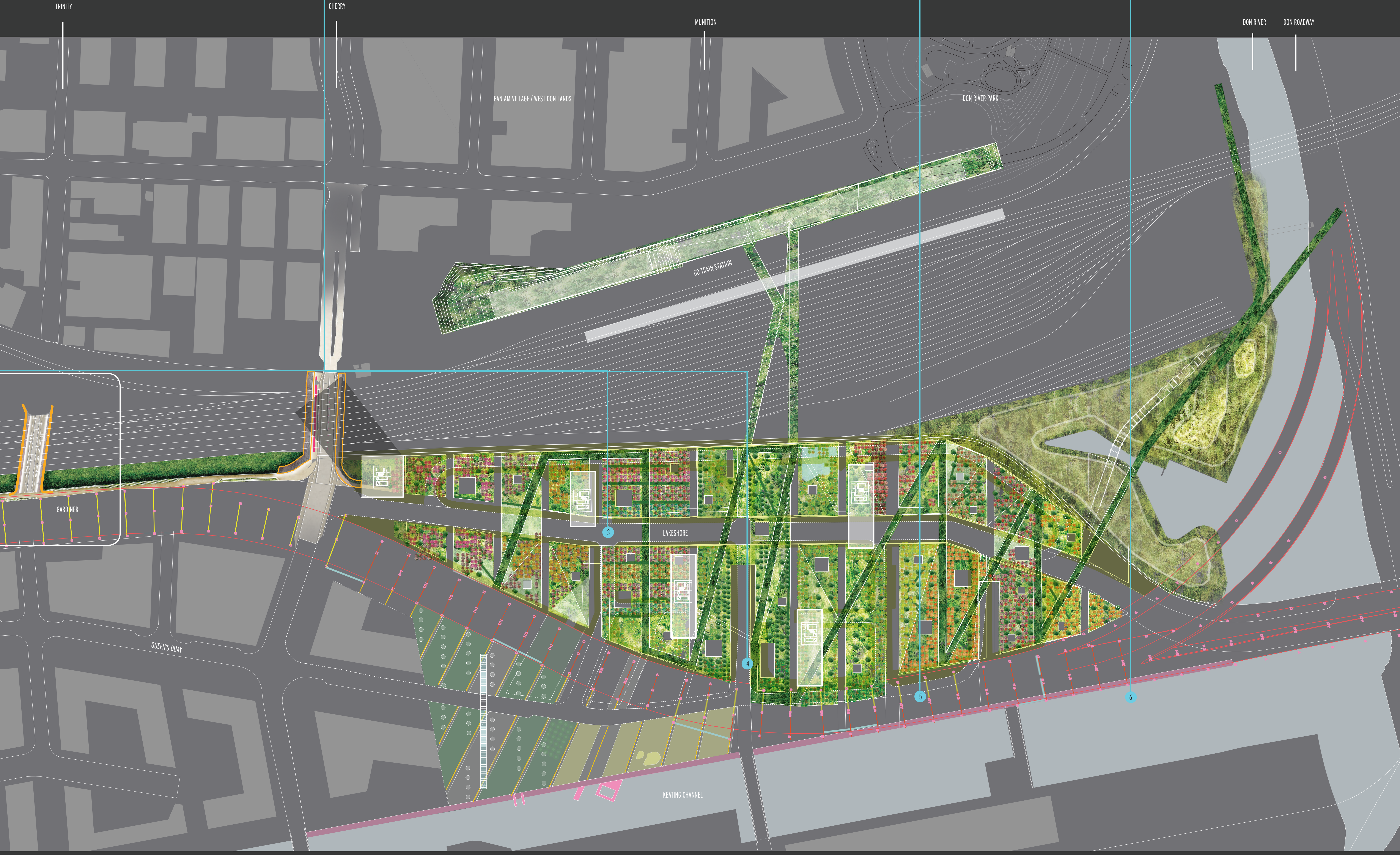
Replanted. The newly created topography will become an urban arboretum with 5000 species of trees and ground seeds. The Park will be subdivi



We are not throwing it away anymore, every bit of our city is a vital piece of stored energy poised to be reused in an enlightened city building initiative.

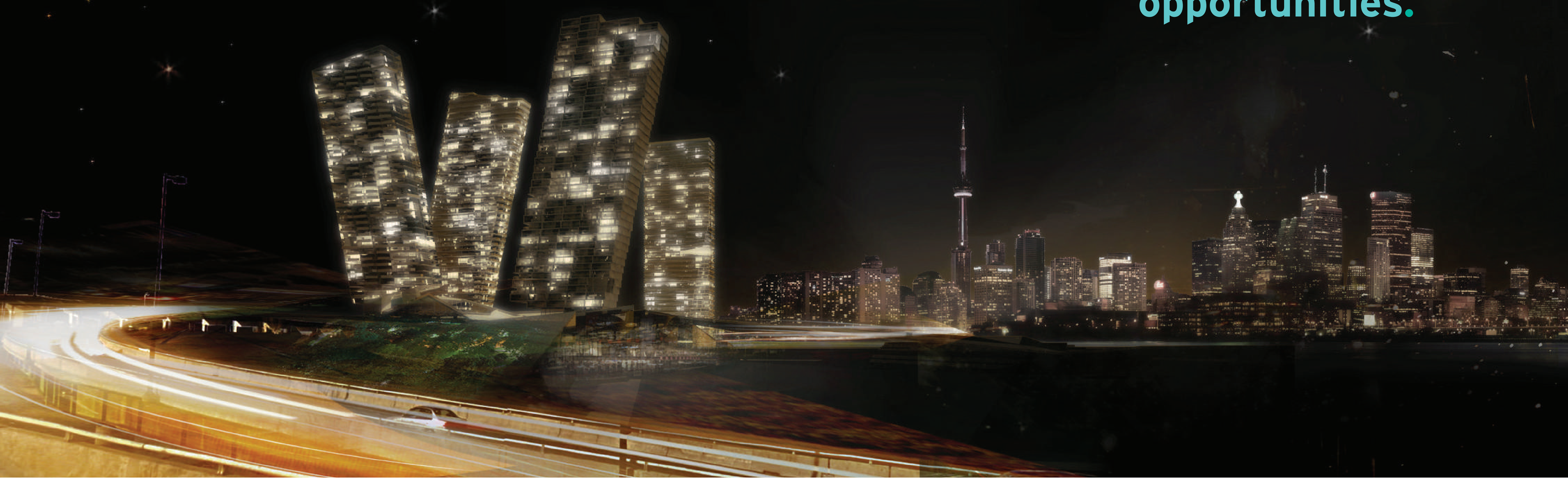


incorporating it. This paradigm shift is already underway. Transit, bicycles and pedestrians are re



divided into several Ecotone zones according to the microclimatic conditions of the slopes and exposure to the elements. This will provide a rich season

Our Gardiner is a structure which has the potential to make a positive contribution towards its surroundings. **constraints become opportunities.**



organizing the flows of movement and the circulation of city blocks.



nal color palette of landscaped bands while housing a variety of programs appropriate for each micro-condition within a larger green system.