

WATERFRONTToronto

Gardiner East

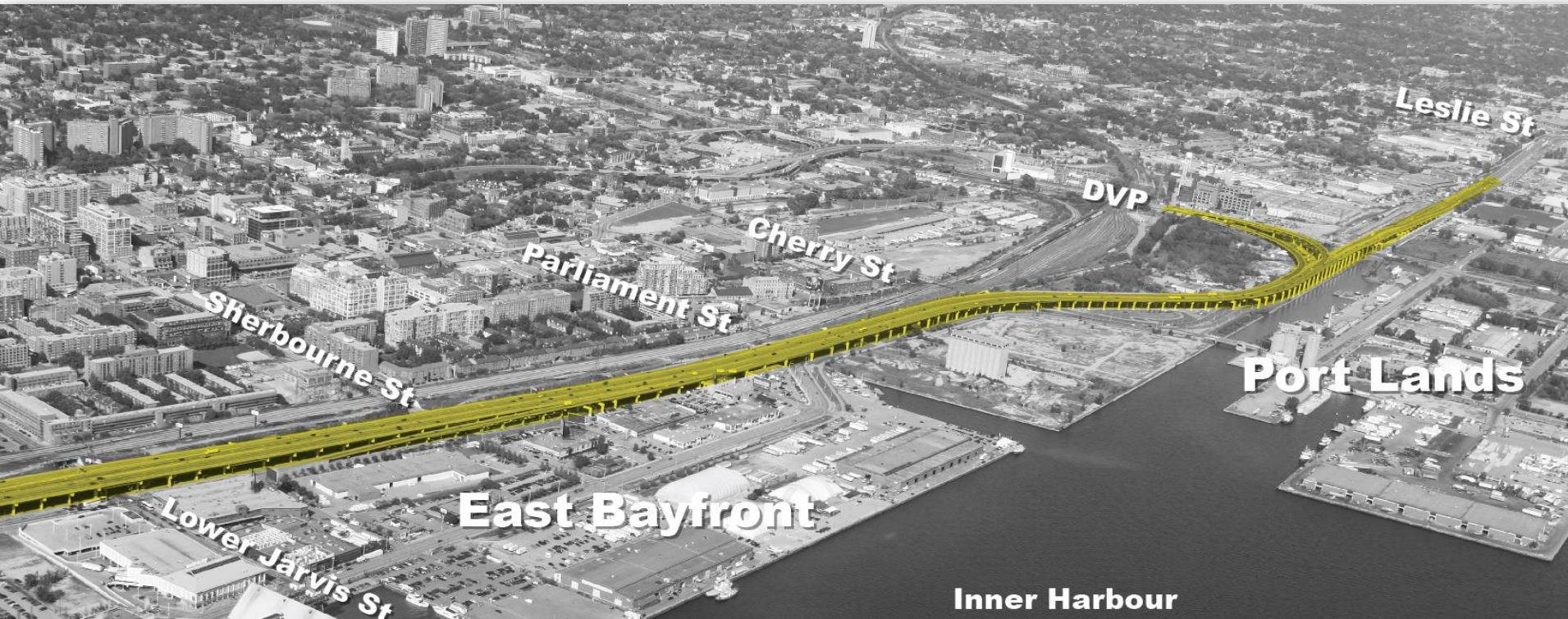
**Gardiner Expressway
& Lake Shore Boulevard Reconfiguration
Environmental Assessment
& Urban Design Study**

Waterfront Toronto Board of Directors Capital Approval
October 26, 2015

Gardiner East

Gardiner Expressway & Lake Shore Boulevard Reconfiguration
Environmental Assessment & Urban Design Study

Study Area



Status Update

May 2014:

- Hybrid and Boulevard Options presented to PWIC.
- Committee requested:
 1. *Work with WT and community stakeholders to review the recommended option [Remove] under the EA process to mitigate congestion concerns;*
 2. *Prepare an additional option that combines the maintain and replace components to preserve expressway linkage and functionality between the GE and the DVP, and evaluate it against the EA criteria and the following:*
 - *Transportation functionality;*
 - *Impacts on key economic sectors;*
 - *Cost benefit;*
 - *Future land use considerations;*
 - *Public transit components;*
 - *Environmental Impacts; and*
 - *Neighbourhood growth and compatibility.*

Status Update

June 2015:

City Council voted in favour of the Hybrid Alternative and requested reports back on:

1. Hybrid design alternatives
2. Tunnelling
3. Tolling and road pricing*
4. Fit with Gardiner Expressway strategic rehabilitation plan*
5. 2016 budget approvals*
6. East Bayfront/waterfront LRT
7. Keating Channel precinct plan
8. Provincial uploading of “King’s Highway”*

*City led reporting

Status Update

Since June 2015:

- Project team develops Hybrid Design Concepts and commences evaluation of three “carry forward” alternatives

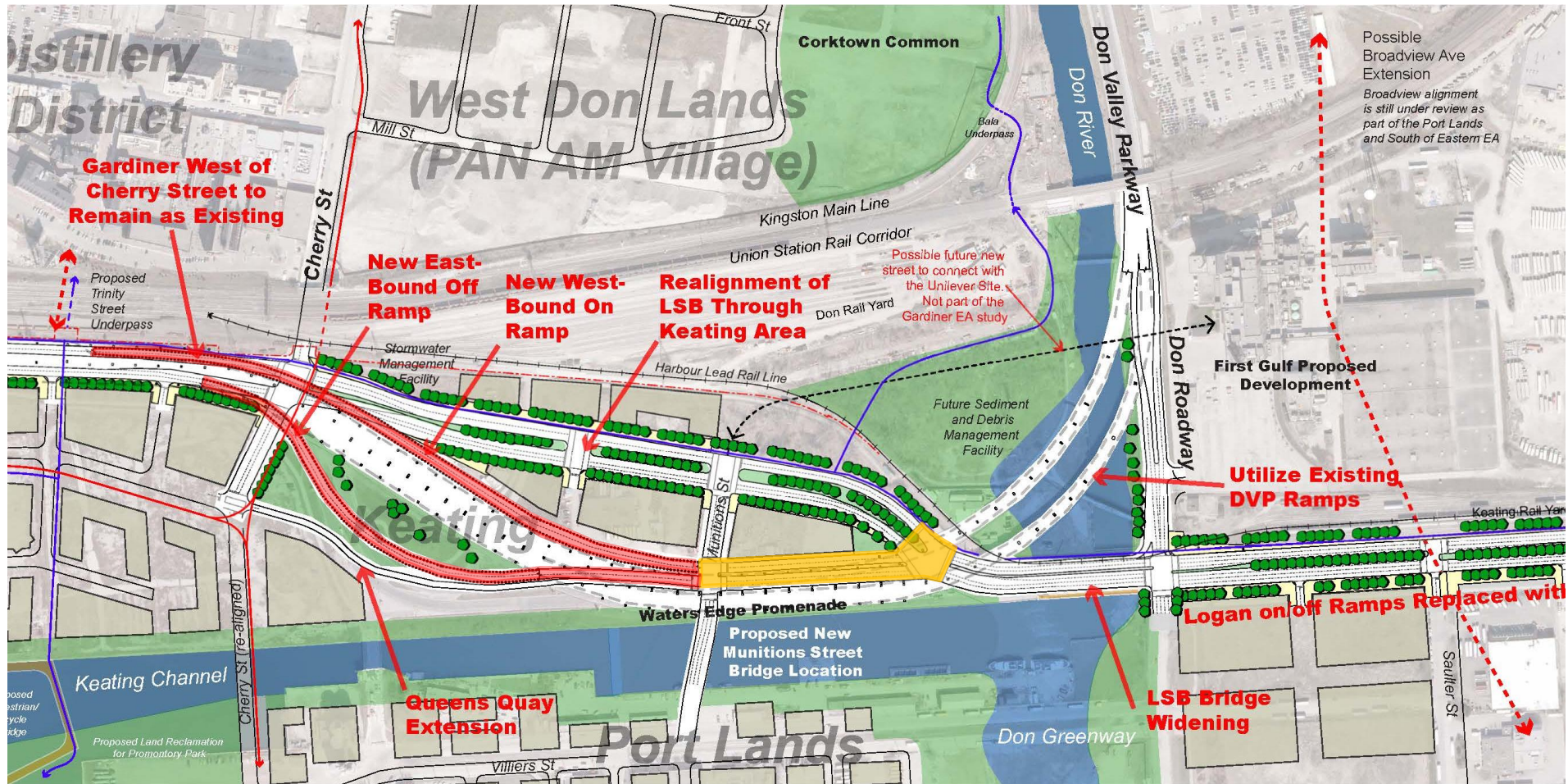
September 2015:

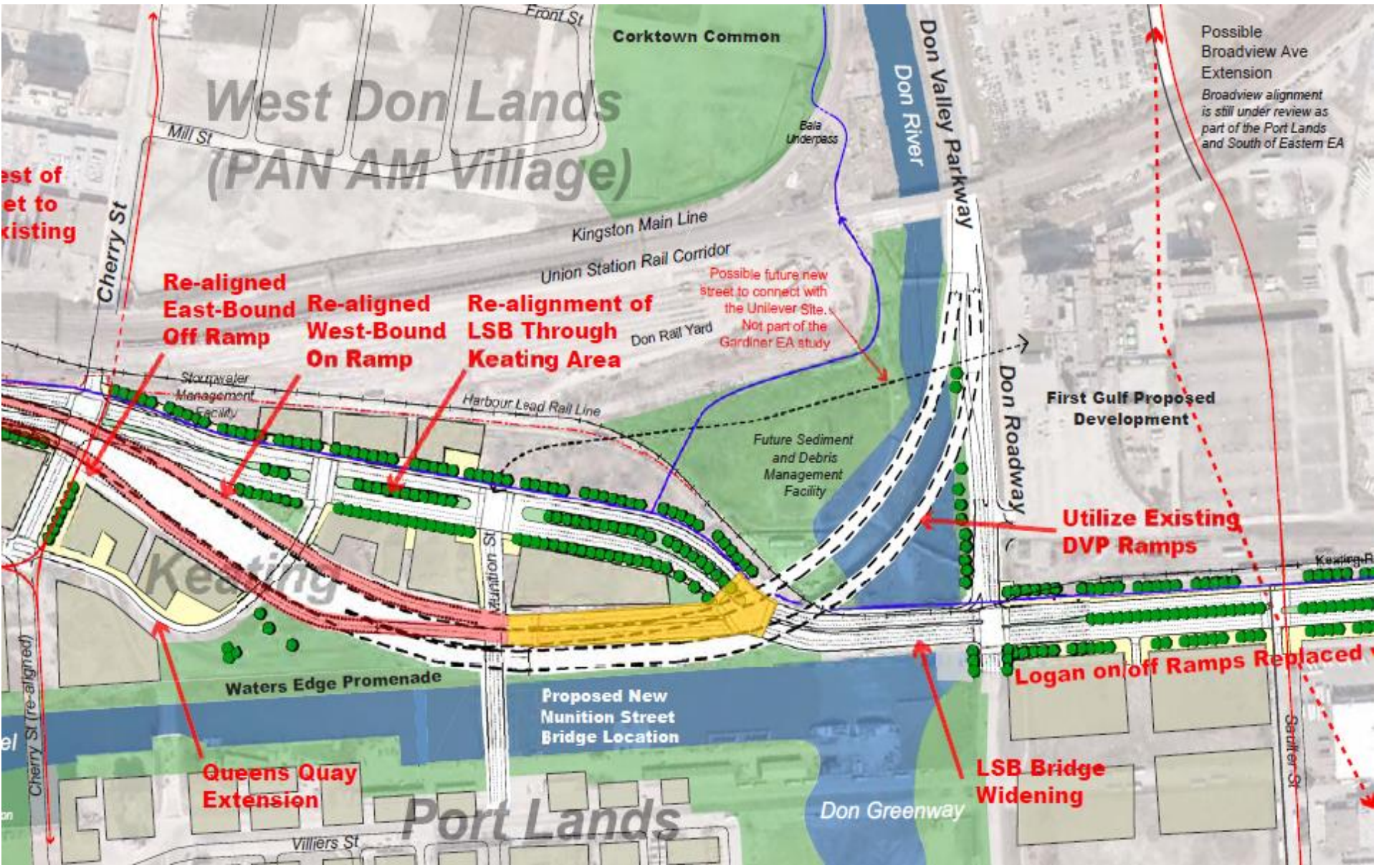
- Status update provided to PWIC

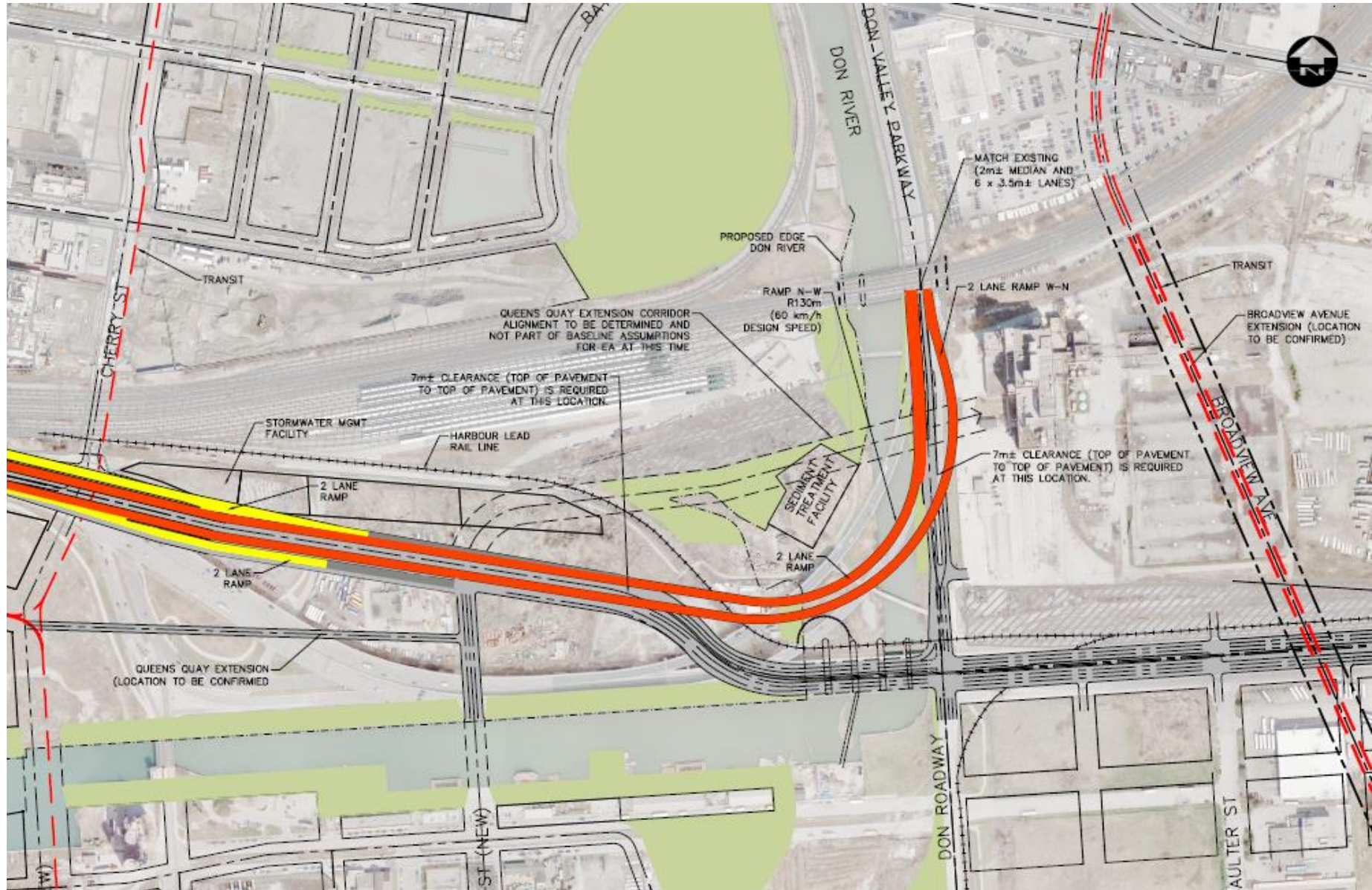
After September PWIC:

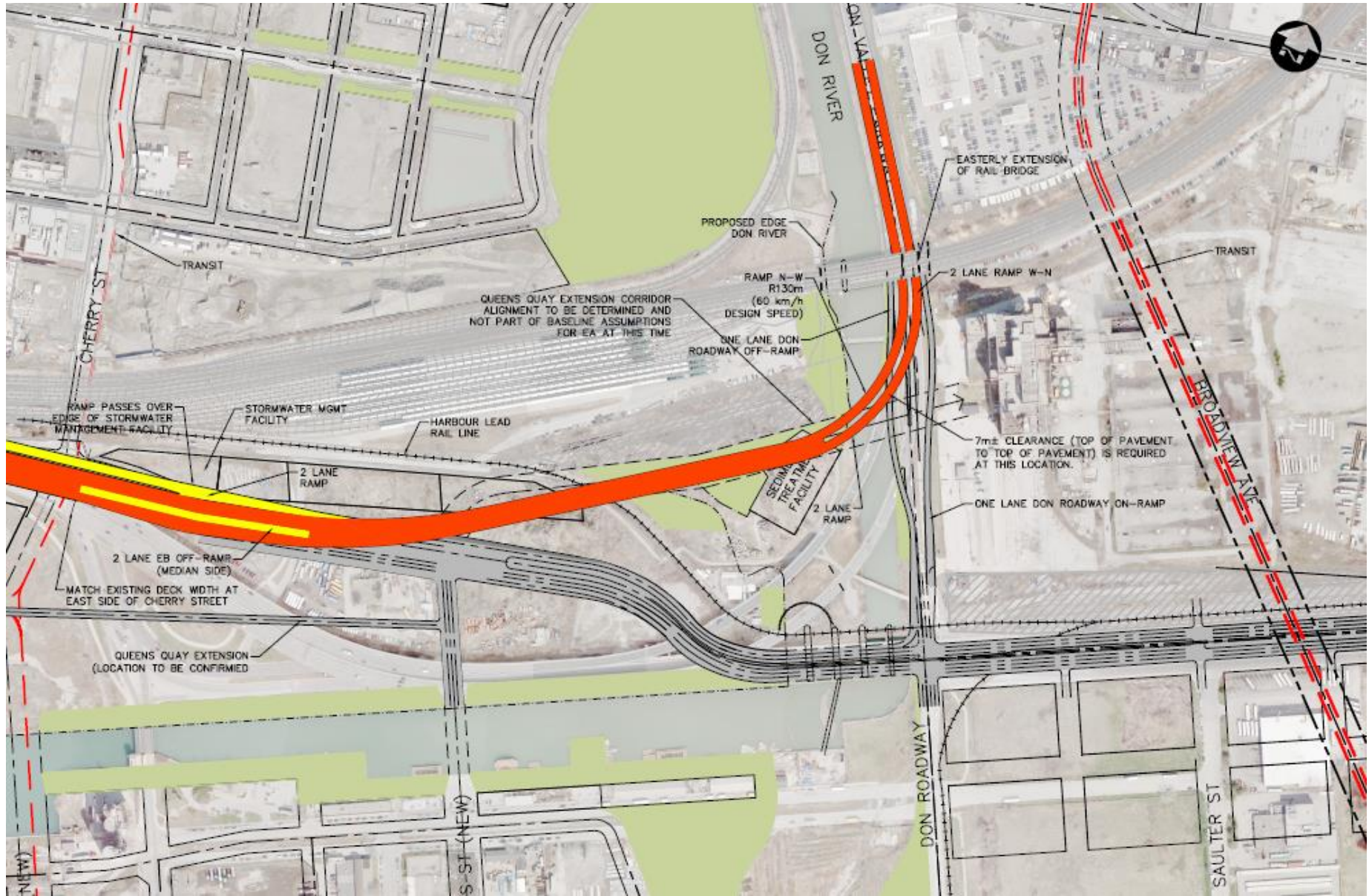
- Alternative design concepts will be developed further
- Evaluation will be completed including urban design options for each alternative and flood modelling to confirm impacts to Lower Don River naturalization
- Undertake public outreach including Stakeholder Advisory Committee Meetings and Public Information Centre in December 2015.

Council Approved Hybrid Alternative





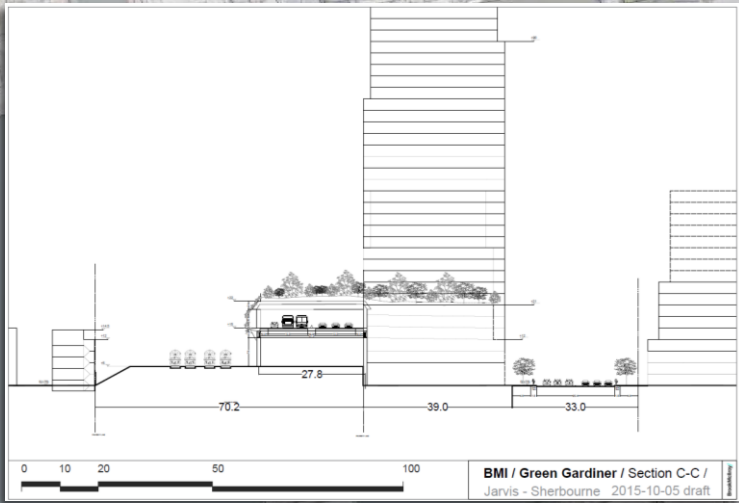
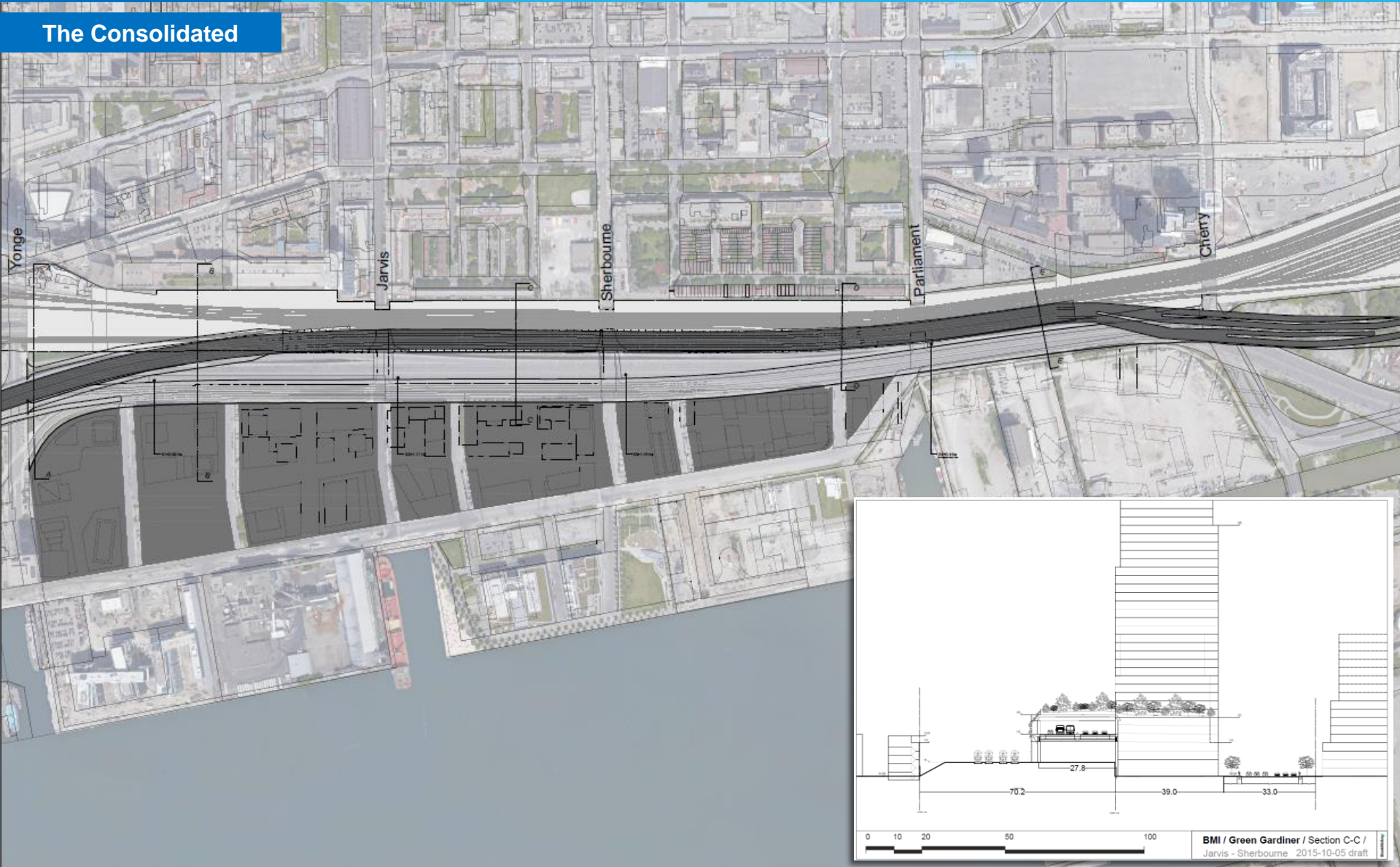




Third Party Proposals

The Consolidated Plan

The Consolidated

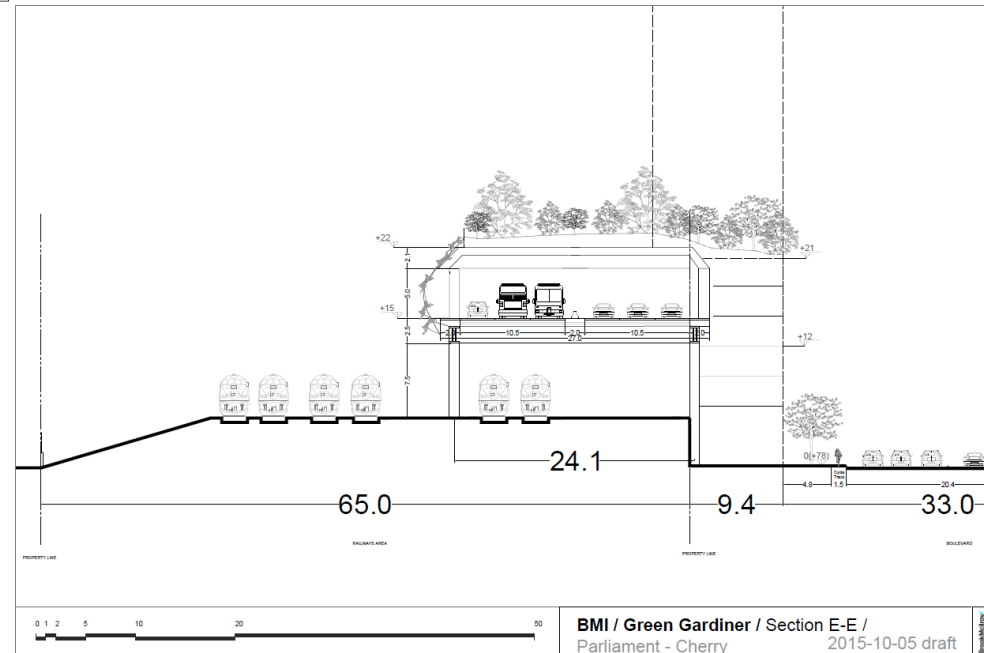
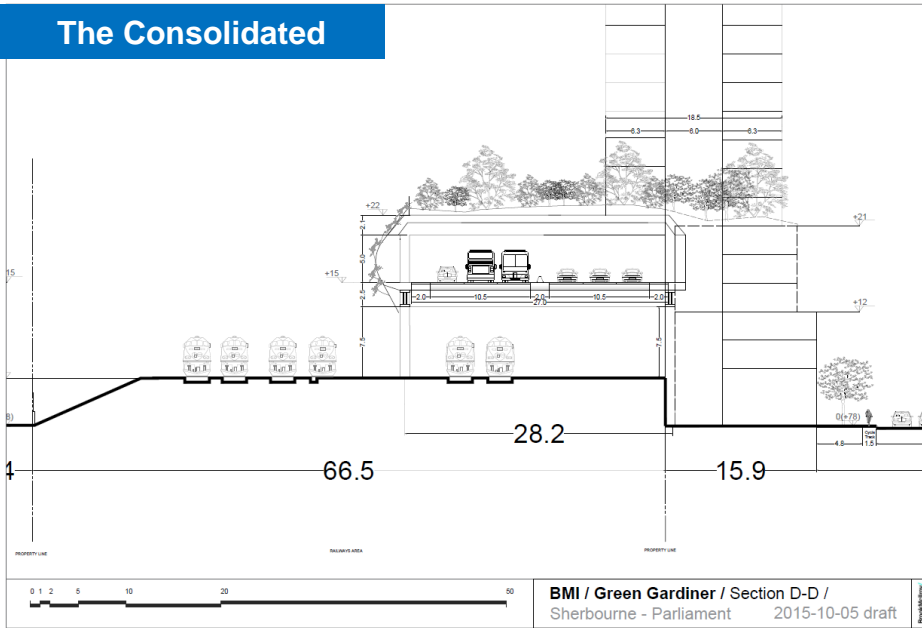


BMI / Green Gardiner / PLAN
2015-10-05 DRAFT

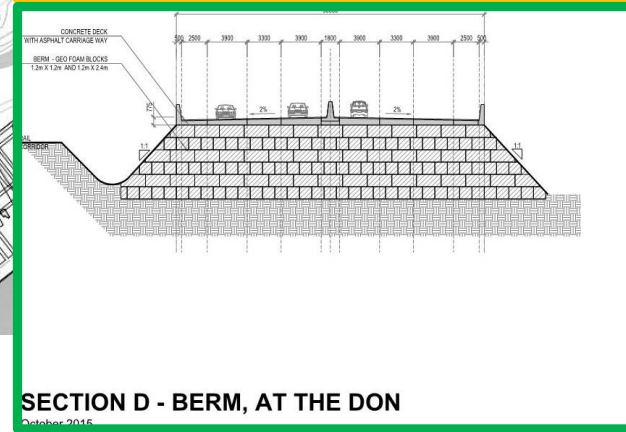
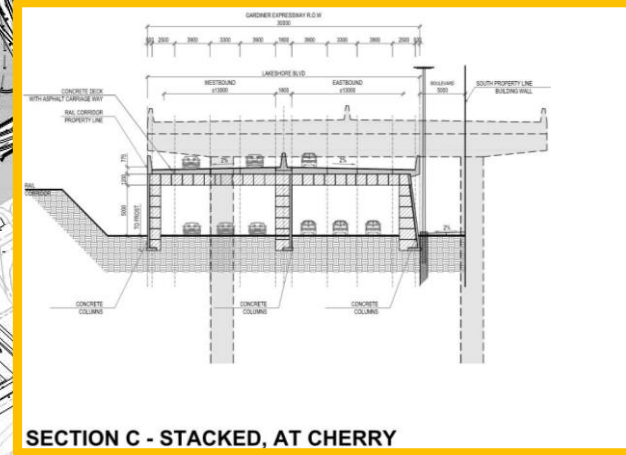
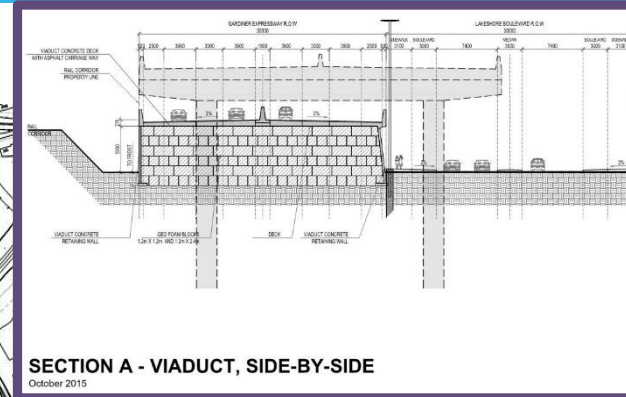
Third Party Proposals

The Consolidated Plan

The Consolidated



The Viaduct

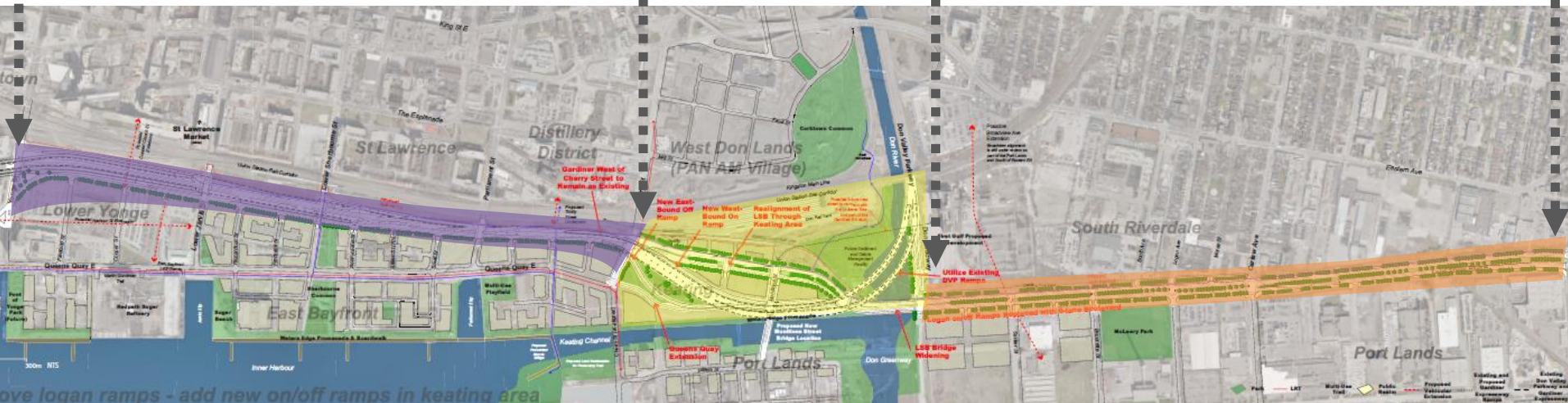


Urban Design Scope Map

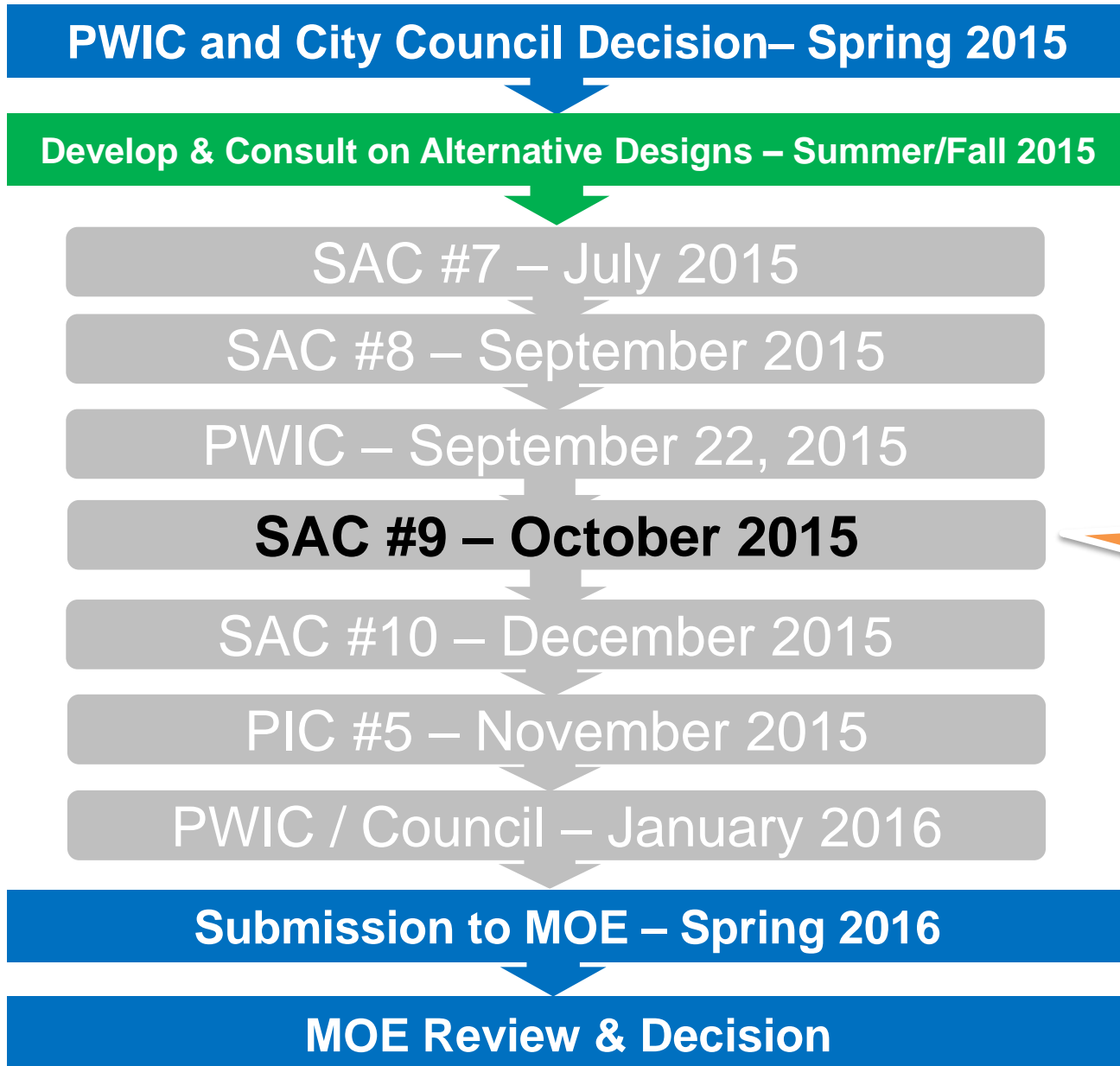
West of Cherry St

Keating Area

East of the Don Roadway



Project Schedule



Financial History:

Current Annual Corporate Plan Budget	\$8,852,966
<u>Additional Capital Approval Request</u>	<u>\$1,241,686</u>
TOTAL	\$10,094,652

Breakdown of Capital Request:

EA/Engineering Consulting Fees	\$567,000
Public Consultation (one additional PIC and two SAC)	\$105,000
Third Party Peer Reviews (Safety/Flood Protection)	\$32,000
WT Project Management Costs (Staff)	\$175,000
Post EA Submission Costs (Mar - Dec 2016)	\$350,000
<u>Non Recoverable HST</u>	<u>\$21,000</u>
Total Gardiner EA Capital Approval Request	\$1,250,000

Funding sources:

City Secretariat Flow-Through Reallocation	\$600,000
EBF Transit Reallocation	\$180,000
New City funding	\$470,000

Recommendation

Management recommends FARM approval for a capital expenditure of an additional \$1,250,000 to complete the Gardiner Expressway and Lake Shore Boulevard Reconfiguration Environmental Assessment and Urban Design Study.

Motion

ON MOTION duly made, seconded, and carried, be it **RESOLVED** that the Board approves a capital expenditure of an additional \$1,250,000 to complete the Gardiner Expressway and Lake Shore Boulevard Reconfiguration Environmental Assessment and Urban Design Study.