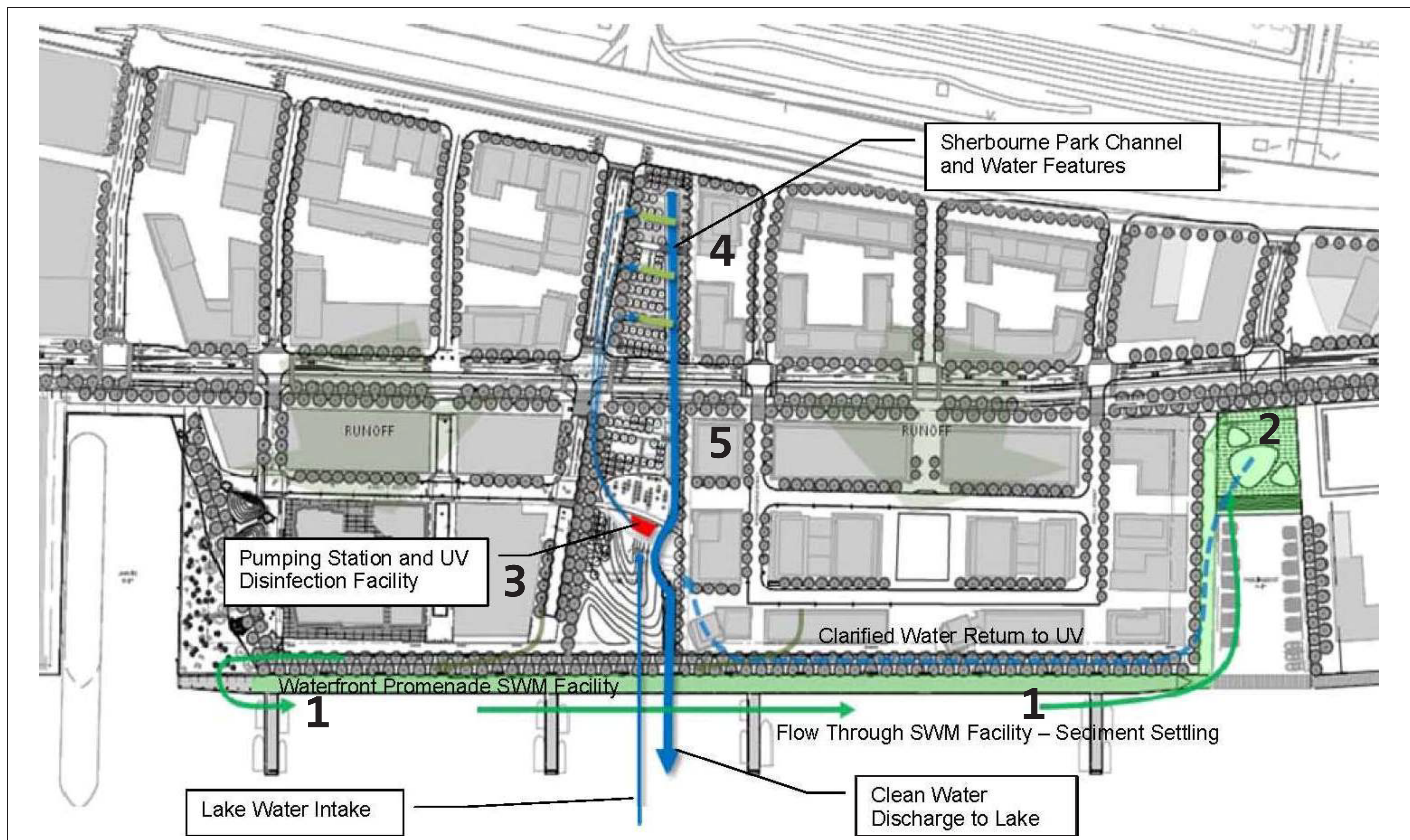


East Bayfront Stormwater Management



Waterfront Toronto is constructing a stormwater management system in East Bayfront that is integrated into the area's public realm. This integrated approach allows required stormwater infrastructure to be beautiful, functional, sustainable and cost-effective.

How it Works:

1. After a storm, runoff will be collected in East Bayfront's Stormwater Management Facility located in tanks under the planned Water's Edge Boardwalk where initial treatment and settling takes.
2. Next, the water will travel to a large tank under the future Parliament WaveDeck which includes an artificial wetland and three holes in its platform to allow natural UV rays to penetrate and further treat the water.
3. The water is then conveyed to the Sherbourne Common Pumping Station and UV Facility housed beneath the park's Pavilion where strong UV light completes the treatment process.
4. After the UV treatment is complete, the water enters the 240 metre long water channel — or urban river — through one of three art features that rise almost nine metres from the ground.
5. Treated water cascades down from the art features and travels the full length of the channel and its biofiltration beds. Clean water is then discharged into Lake Ontario.

Water from Lake Ontario will be treated in the Pavilion's UV Facility until the planned Water's Edge Boardwalk and Parliament WaveDeck are built.