

# Don River Park

Toronto, Ontario

Don River Park, Central Lawn  
Toronto, Ontario  
MVVA





Site

Don River



RIVER SQUARE

Don River




Eastern Avenue Extension

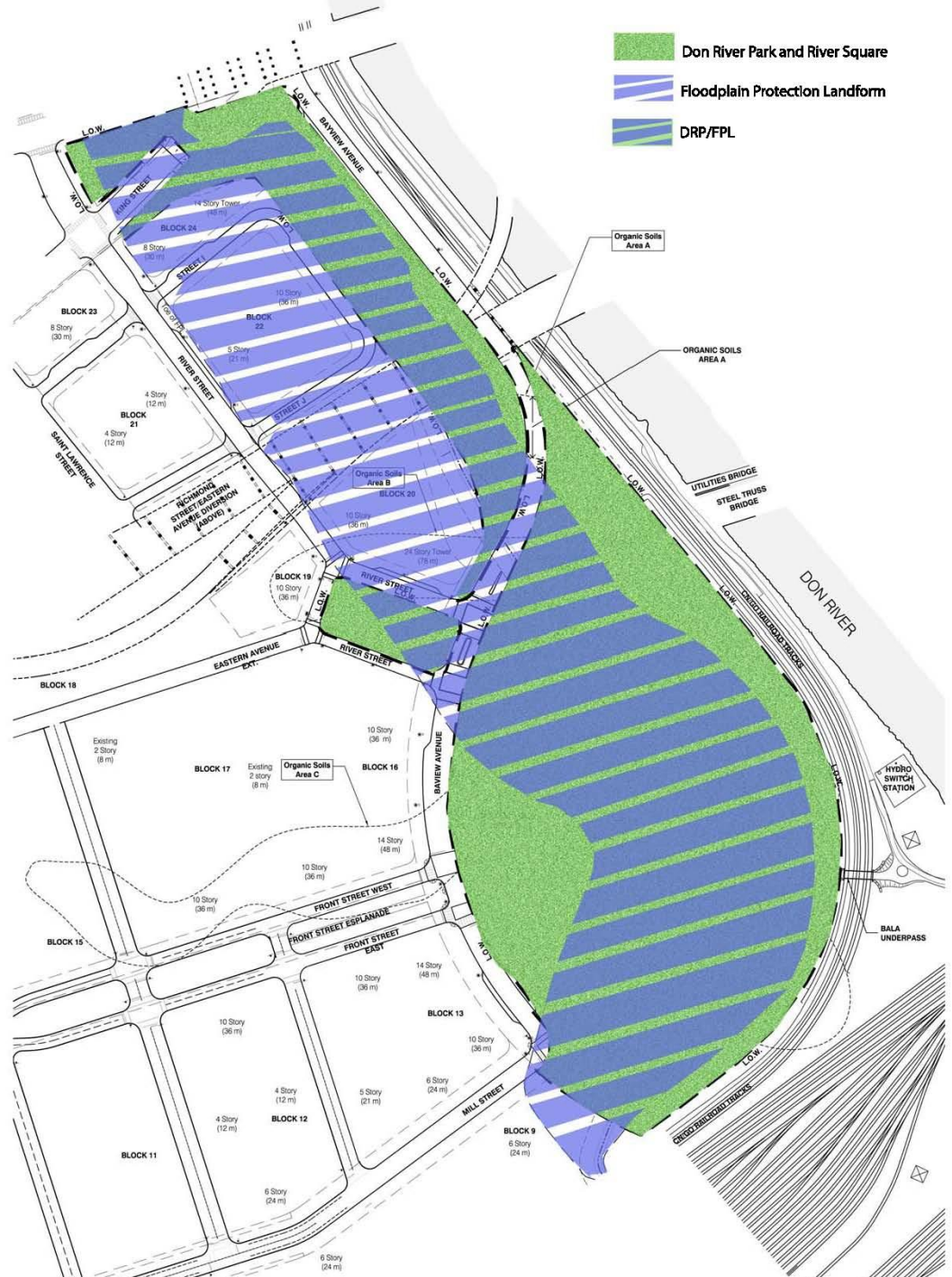
DON RIVER PARK NEIGHBOURHOOD




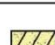


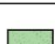
NEIGHBOURHOOD

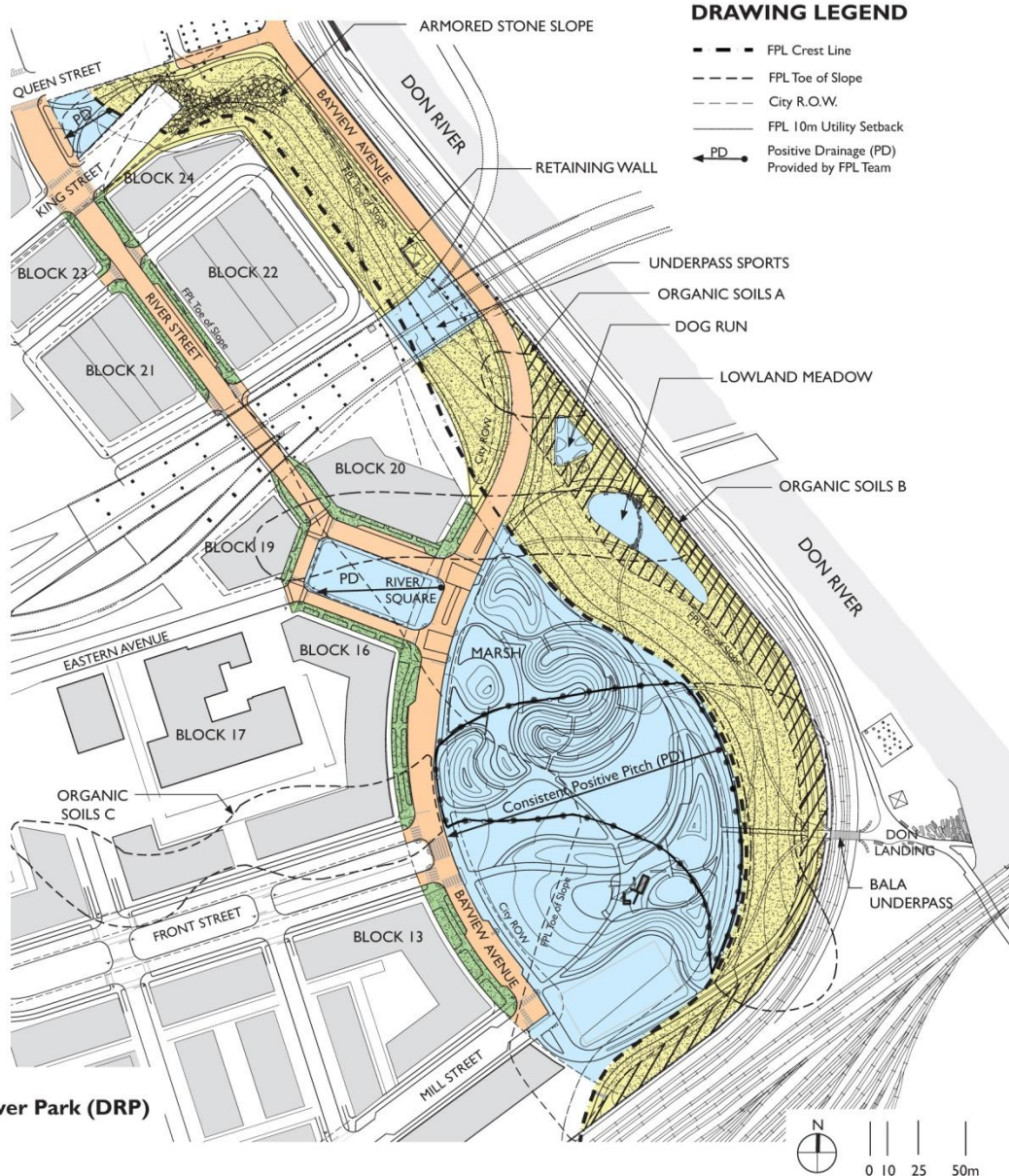
MILL STREET

MILL STREET NEIGHBOURHOOD





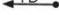
-  Don River Park and River Square
-  Floodplain Protection Landform
-  DRP/FPL



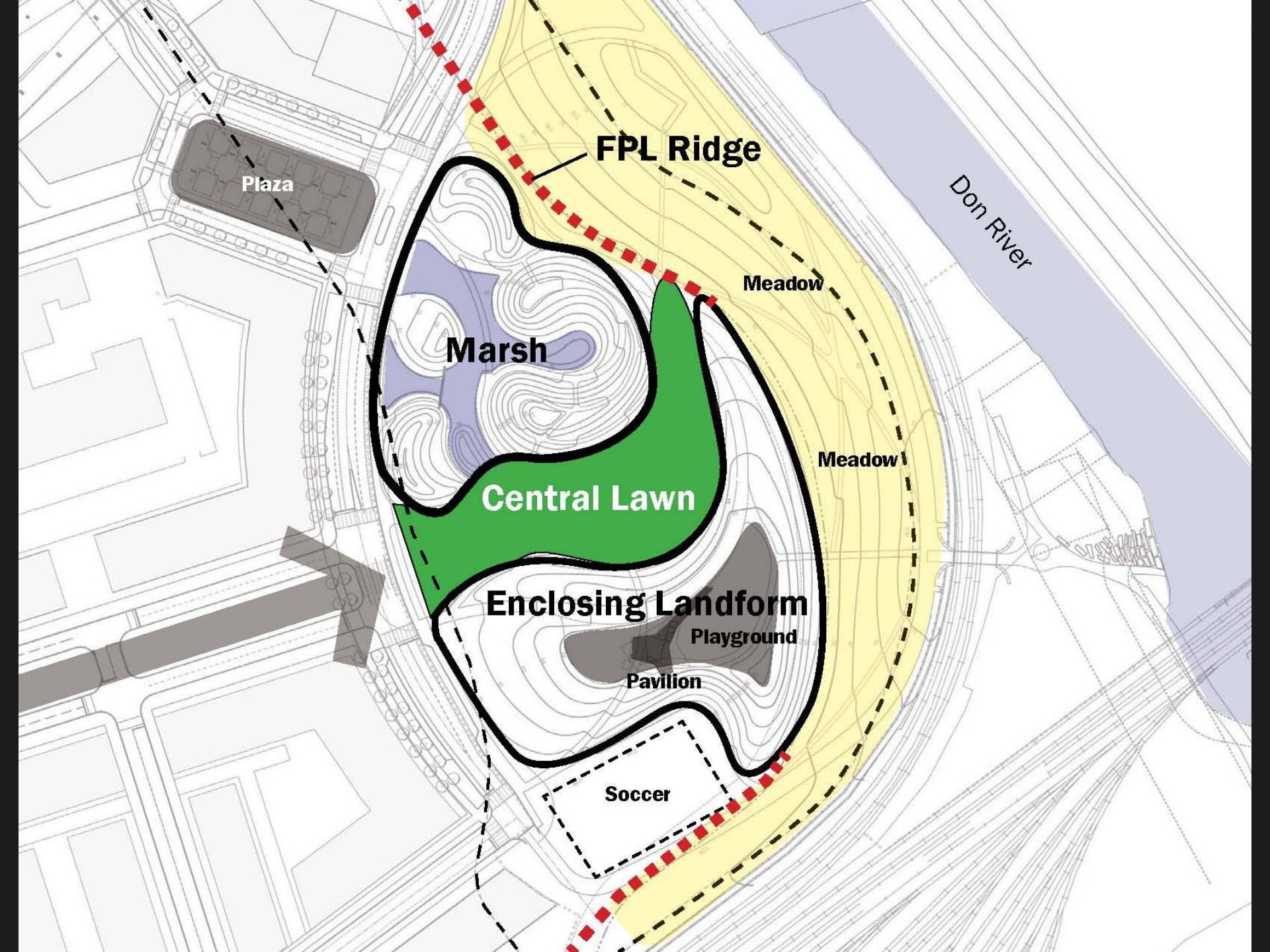
KEY	FPL SCOPE	DRP SCOPE
	<ul style="list-style-type: none"> <li>Design and Monitor Settlement Program.</li> <li>Supply and Install Fill for Settlement Program.</li> <li>Spread Excess Fill from Settlement Program to Achieve Rough Grading for DRP and River Square Designs.</li> <li>Remove Excess Fill that Exceeds DRP Needs.</li> </ul>	<ul style="list-style-type: none"> <li>No Scope.</li> </ul>
	<ul style="list-style-type: none"> <li>Design and Monitor Settlement Program.</li> <li>Supply and Install Fill for Settlement Program.</li> <li>Spread Excess Fill from Settlement Program.</li> </ul>	<ul style="list-style-type: none"> <li>No Scope.</li> </ul>
	<ul style="list-style-type: none"> <li>Supply and Install FPL Core, Fill and Cap.</li> <li>Urban Prairie Paths: Cut in Benching and Swales.</li> <li>Supply and Install 0.5m Depth Planting Soil.</li> <li>Supply and Install Urban Prairie Seed.</li> <li>North Tie-In: Supply and Install Armored Stone Slope.</li> <li>Decommissioning and Removal of all Existing Services.</li> <li>Supply and Install Hydro Tower Wall and Gravel.</li> </ul>	<ul style="list-style-type: none"> <li>Urban Prairie Paths and Multi-Use Road/Path: Remove Planting Soil. Supply and Install Paths.</li> <li>Provide Urban Prairie Seed Specification and Layout Drawing.</li> <li>Provide Planting Soil Specification.</li> <li>Supply and Install All Steps.</li> <li>Provide Layout/Grading Drawing for all Paths and Multi-Use Road/Path. Show Subgrade Spot Elevations and Culverts.</li> </ul>
	<ul style="list-style-type: none"> <li>Supply and Install Fill, Create Positive Drainage between Property Line and Toe of Slope.</li> <li>Urban Prairie Paths: Cut in Benching and Swales.</li> <li>Multi-Use Road/Path: Cut in Benching.</li> <li>Supply and Install Water and Storm Servicing.</li> <li>Supply and Install Stub Out for Lower Meadow Drainage.</li> <li>Supply and Install 0.5m Depth Planting Soil.</li> </ul>	<ul style="list-style-type: none"> <li>Urban Prairie Paths and Multi-Use Road/Path: Remove Planting Soil. Supply and Install Pavements.</li> <li>Provide Urban Prairie Seed Specification and Layout Drawing.</li> <li>Provide Planting Soil Specification.</li> <li>Provide Layout/Grading Drawing for all Paths and Multi-Use Road/Path. Show Subgrade Spot Elevations.</li> <li>Supply and Install Shrubs at Railroad Tracks.</li> <li>Supply and Install Fence and Gates at Railroad Tracks.</li> </ul>
	<ul style="list-style-type: none"> <li>Supply and Install Fill Soils for FPL and Achieve Positive Drainage (PD) from FPL Crest to Back of Bayview Avenue Curb.</li> <li>Spread Excess Fill from Settlement Program to Achieve Rough Grading for DRP and River Square Designs.</li> <li>Underpass Sports: Supply and Install FPL Fill, Supply and Install Asphalt Binder Course and Asphalt / FPL Edge Detail. Accommodate Existing Bridge Deck Drainage.</li> <li>Queen/King Triangle: Supply and Install FPL Fill to Achieve Positive Drainage to Back of River Street Curb.</li> <li>Dog Run: Supply and Install FPL Fill and Rough Grading.</li> <li>Lowland Meadow: Supply and Install FPL Fill and Rough Grading.</li> <li>River Square: Supply and Install FPL Fill to Achieve Positive Drainage (PD).</li> </ul>	<ul style="list-style-type: none"> <li>Adjust FPL Rough Grading.</li> <li>Supply and Install Planting Soils.</li> <li>Supply and Install all Pavements, Planting, Site Improvements and Lighting.</li> <li>Supply and Install Storm Drainage, Water Retention Tank, Water, Electrical and Communications for DRP.</li> <li>Marsh: Supply and Install Bentonite Liner, Planting Soils and Planting.</li> <li>Dog Run: Supply and Install Paths, Gate/Fence, Planting Soils, Plants and Water Hook-Up/Supply for Fountain.</li> <li>Underpass Sports: Supply and Install Topcoat of Pavement, Fence/Gate, Steps and Recreation Improvements.</li> <li>Play Hill: Supply and Install Pavilion, Play Area and Water Play.</li> <li>River Square: Supply and Install all Pavements, Lighting, Planting, Planting Soils and Servicing.</li> <li>Lowland Meadow: Supply and Install Bentonite Liner, Planting Soils, Plants and Stepping Path. Provide Location of Stub Out and Provide Drainage Connection to Stub Out.</li> <li>Queen/King Triangle: Supply and Install Paths, Planting and Planting Soils.</li> </ul>
	<ul style="list-style-type: none"> <li>Supply and Install Roadway Fill.</li> <li>Supply and Install all Pavements, Curbs, Signals, Signs, Conduit and Footings.</li> <li>Supply and Install all Servicing.</li> <li>Supply and Install DRP Service Connections to City ROW within DRP.</li> <li>Supply and Install River Square Stub Out Service Connections.</li> </ul>	<ul style="list-style-type: none"> <li>Provide Design Development of Roadway Unit Pavement to City Satisfaction.</li> </ul>
	<ul style="list-style-type: none"> <li>Supply and Install Fill.</li> <li>Supply and Install all Pavements, Plants, Planting Soil, Lighting, Irrigation, and Site Furniture.</li> <li>Supply and Install all Servicing.</li> </ul>	<ul style="list-style-type: none"> <li>Provide Design Development of Streetscape to City Satisfaction.</li> </ul>



**DRAWING LEGEND**

-  FPL Crest Line
-  FPL Toe of Slope
-  City R.O.W.
-  FPL 10m Utility Setback
-  Positive Drainage (PD) Provided by FPL Team

**Construction Responsibilities**  
**Flood Protection Landform and Associated Infrastructure Work (FPL) and Don River Park (DRP)**  
**Waterfront Toronto**  
 Michael Van Valkenburgh Associates, Inc., 22 June 2007



Plaza

FPL Ridge

Don River

Meadow

Marsh

Meadow

Central Lawn

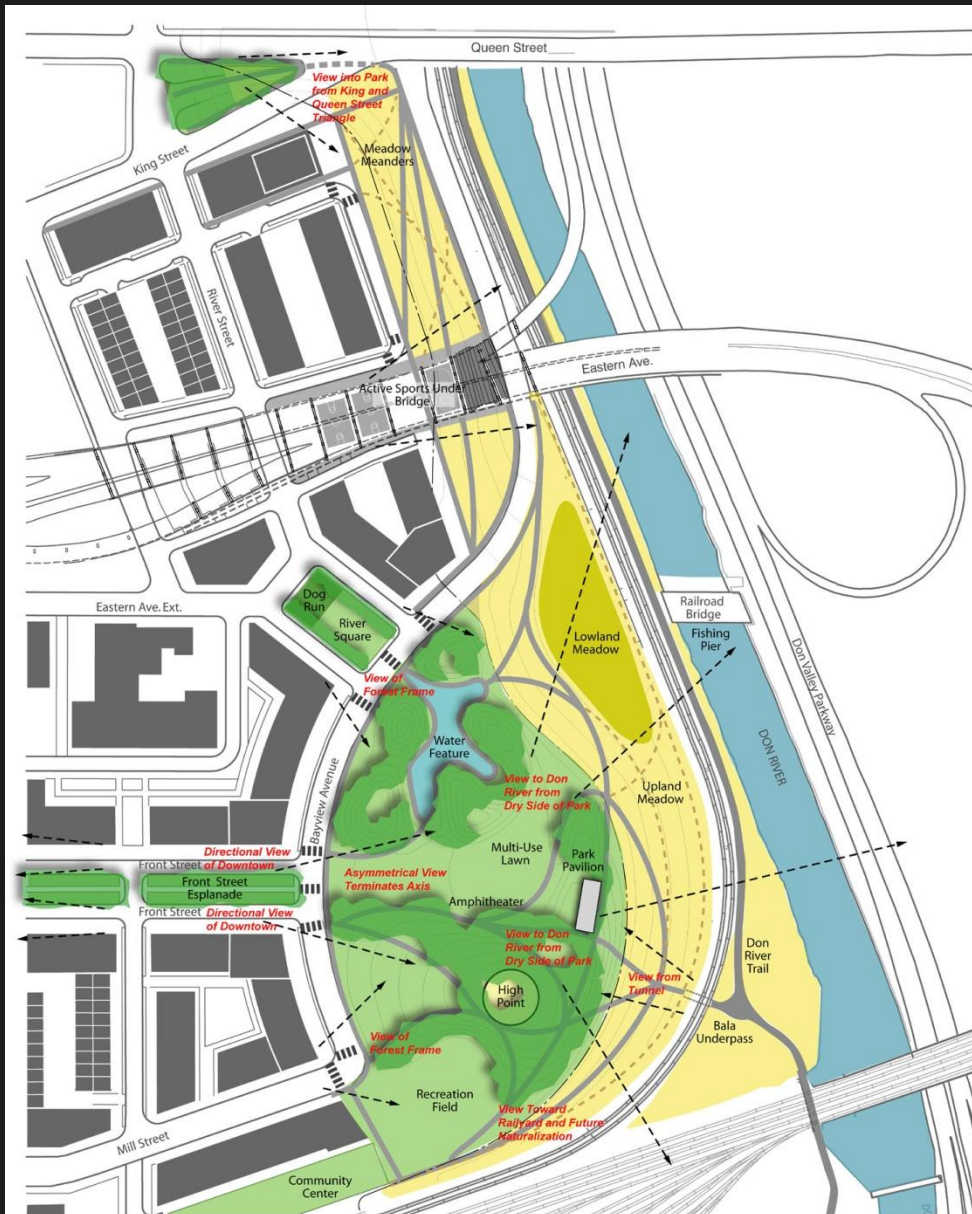
Enclosing Landform

Playground

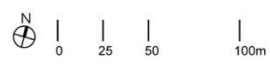
Pavilion

Soccer





**Initial Design Concepts**  
 Don River Park  
 Design Forum Meeting #1  
 Michael Van Valkenburgh Associates, Inc., Landscape Architects  
 18 April 2006







FRONT STREET

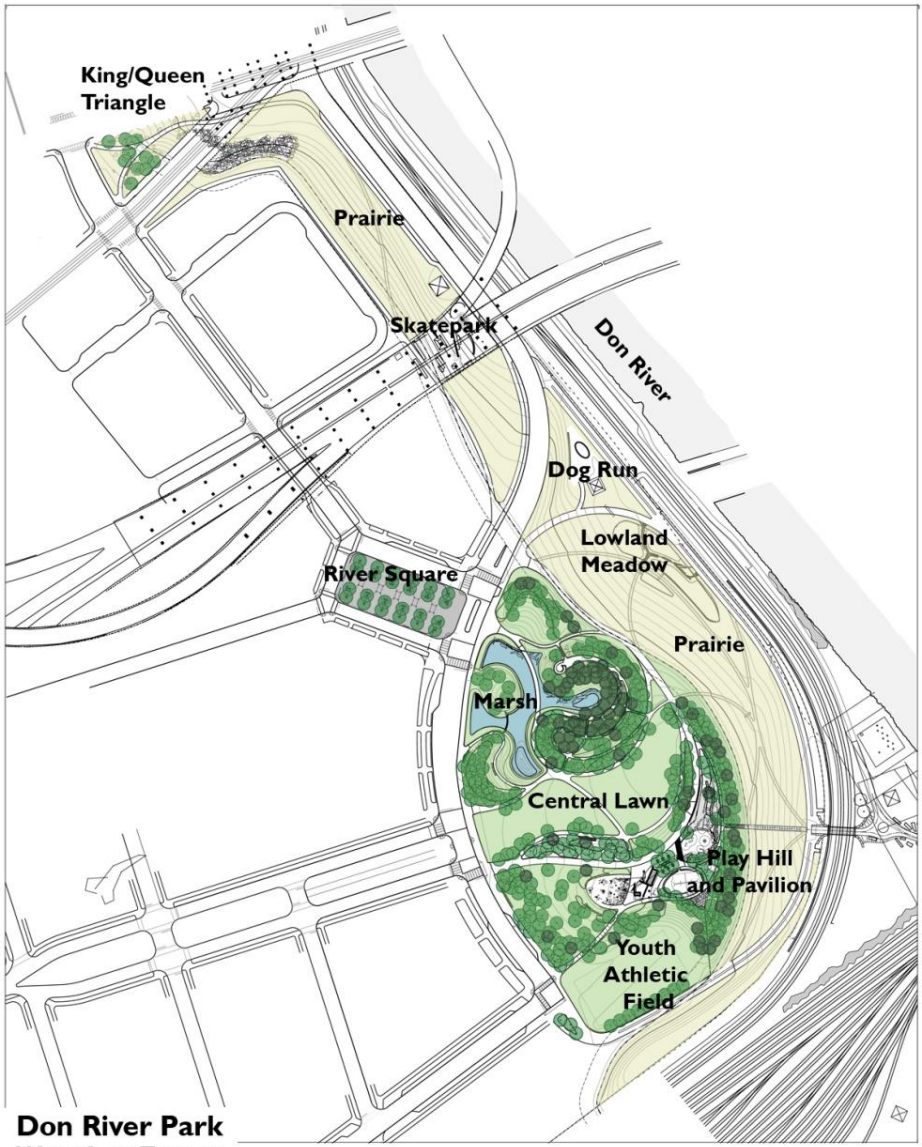
Front Street  
Esplanade

FRONT STREET

Esplanade Avenue



# Don River Park and River Square



**Don River Park**  
Waterfront Toronto  
Michael Van Valkenburgh, Associates, Inc.  
Landscape Architects  
20 August 2007





**Wet side- Urban Prairie**



**Playing Field**



Marsh



**Play hill and Pavilion**



WATERFRONT Toronto

CLIENT

Waterfront Toronto  
20 Bay Street, Suite 1310  
Toronto, ON M5G 2S8  
Tel: 416.214.1344  
Fax: 416.214.4591

LANDSCAPE ARCHITECT

Michael Van Waterburgh Associates, Inc.  
Landscape Architects  
251 Concord Avenue  
Cambridge, MA 02138  
Tel: 617.864.2078  
Fax: 617.482.3128

PAVILION ARCHITECT

Maryann Thompson Associates  
14 Hilda Avenue  
Cambridge, MA 02142  
Tel: 617.871.4144  
Fax: 617.491.3844

PRIME ENGINEER

Acip  
180 Bloor Street East Ste 205  
Toronto, ON M4W 1B9  
Tel: 416.515.0915  
Fax: 416.515.1035

PAVILION STRUCTURAL ENGINEER

Richard S. Engineers  
605 Main Avenue  
Cambridge, MA 02138  
Tel: 617.866.3222  
Fax: 617.866.7505

GEOTECHNICAL ENGINEER

TICW Associates, Inc.  
86 Davenport St.  
Brimpton, ON L9M 4M6  
Tel: 905.793.9809  
Fax: 905.793.6333

SOIL SCIENTIST

Prin & Smith Associates  
867 Boston Road  
Canton, MA 01920  
Tel: 978.448.8511  
Fax: 978.448.8545

ECOLOGIST

Great Eastern Ecology  
2231 Broadway, Suite 4  
New York, NY 10024  
Tel: 212.578.8803  
Fax: 212.586.4243

IRRIGATION CONSULTANT

Creative Irrigation Solutions, Inc.  
P.O. Box 8130  
1225 Woodward Rd. N.  
London, ON N6G 2C2  
Tel: 416.628.7819

PAVILION CONSULTANT

Green Street Ecology, Inc.  
703 Centre Drive  
Bridgeville, NJ 08037  
Tel: 732.634.6118  
Fax: 855.526.4540

PAVILION CONSULTANT

Oster Valley Native Plants  
P.O. Box 31  
Rt. 47  
Eden, ON N2J 5H0  
Tel: 519.866.9509



STATUS

100% CONSTRUCTION DOCUMENTS

REVISIONS

NO.	DATE	DESCRIPTION

DRAWING TITLE

Pavilion Elevations

JOB NUMBER

0508

SH-EET NO.

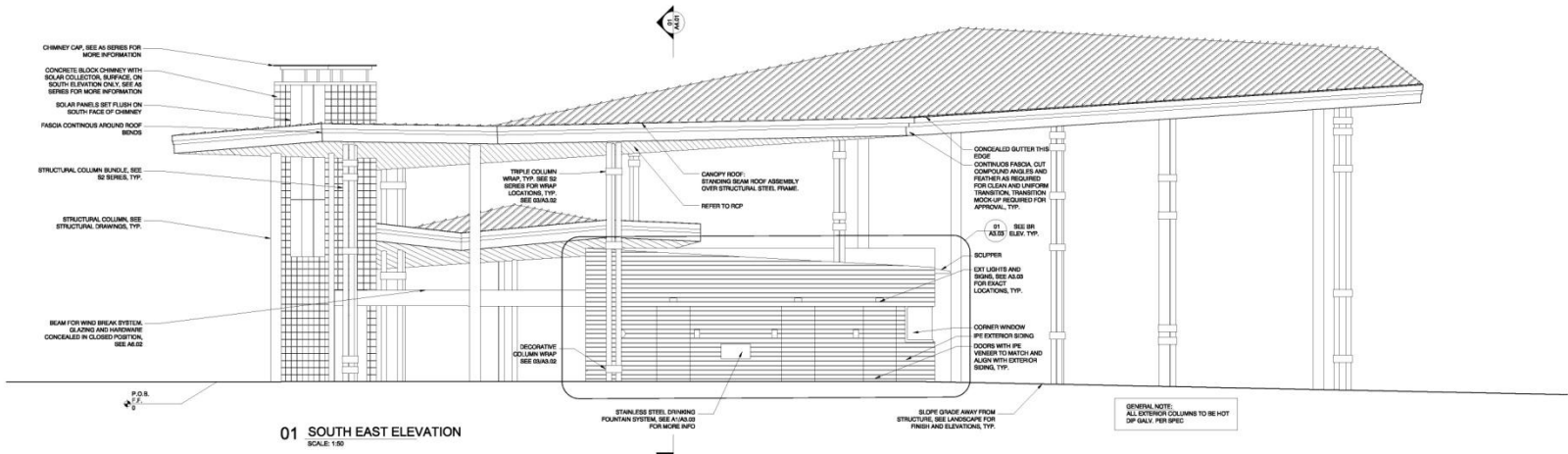
DATE

21 May 2010

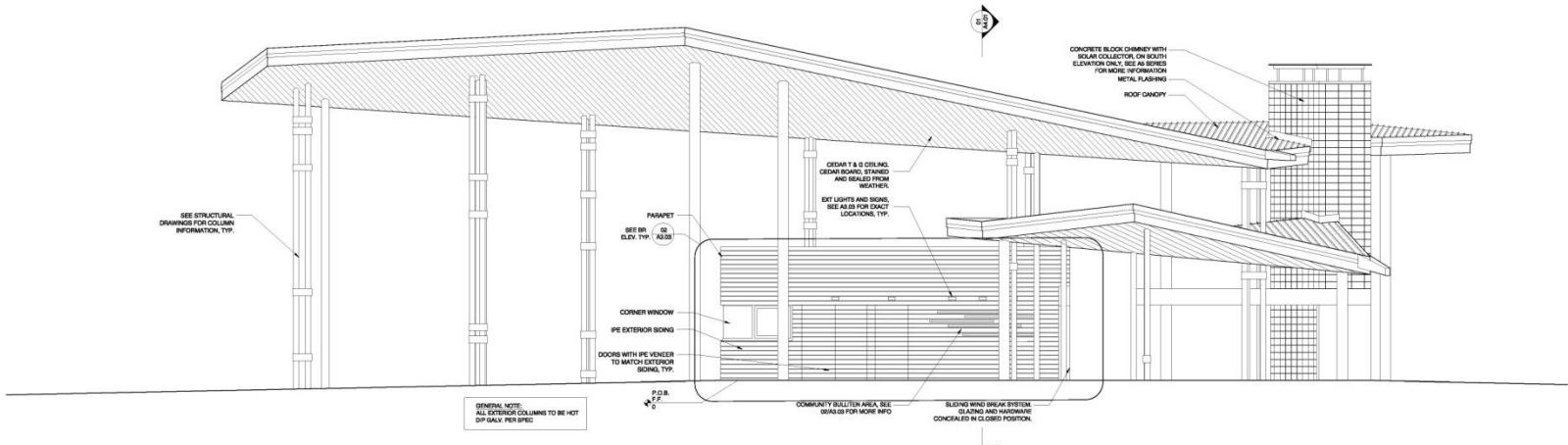
SCALE

DRAWN BY

A3.01



01 SOUTH EAST ELEVATION  
SCALE: 1:50



01 NORTH WEST ELEVATION  
SCALE: 1:50





**CLIENT**

Watersfront Toronto  
20 Bay Street, Suite 1310  
Toronto, ON M5G 2S8  
Tel: 416.214.1344  
Fax: 416.214.4591

**LANDSCAPE ARCHITECT**

Michael Van Venterburgh Associates, Inc.  
Landscape Architects  
251 Concord Avenue  
Cambridge, MA 02138  
Tel: 617.864.2078  
Fax: 617.462.3138

**PAVILION ARCHITECT**

Maryann Thompson Associates  
14 Hilda Avenue  
Cambridge, MA 02140  
Tel: 617.874.4144  
Fax: 617.891.3844

**PRIME ENGINEER**

Acip  
160 Bloor Street East Ste 205  
Toronto, ON M4W 1B9  
Tel: 416.515.0915  
Fax: 416.515.1035

**PAVILION STRUCTURAL ENGINEER**

Richmond So Engineers  
605 Mount Allison Street  
Cambridge, MA 02138  
Tel: 617.866.7021  
Fax: 617.866.7505

**GEOTECHNICAL ENGINEER**

TICW Associates, Inc.  
86 Queen St. E.  
Brimpton, ON L4V 4M8  
Tel: 905.793.9809  
Fax: 905.793.6333

**SOIL SCIENTIST**

Prin & Smith Associates  
887 Boston Road  
Canton, MA 01920  
Tel: 978.448.8511  
Fax: 978.448.6645

**ECOLOGIST**

Great Eastern Ecology  
2231 Broadway, Suite 4  
New York, NY 10024  
Tel: 212.578.8803  
Fax: 212.586.4242

**IRRIGATION CONSULTANT**

Creative Irrigation Solutions, Inc.  
P.O. Box 8130  
1255 Wonderland Rd. N.  
London, ON N6G 3C2  
Tel: 416.628.7819

**PRAIRIE CONSULTANT**

Green Street Ecology, Inc.  
703 Carleton Drive  
Bridgewater, NJ 08807  
Tel: 732.632.4218  
Fax: 903.322.4540

**PRAIRIE CONSULTANT**

Old Valley Native Plants  
P.O. Box 31  
Rt. 47  
Eden, ON N2J 1H0  
Tel: 519.866.9509



**STATUS**

100% CONSTRUCTION DOCUMENTS

**REVISIONS**

NO.	DATE	DESCRIPTION

**DRAWING TITLE**

Pavilion Elevations

**JOB NUMBER**

0508

**SH-EET NO.**

A3.02

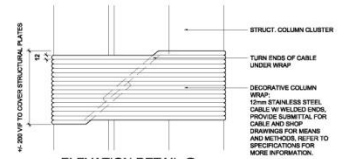
**DATE**

21 May 2010

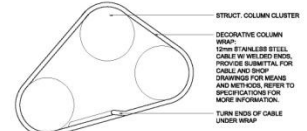
**SCALE**

**DRAWN BY**

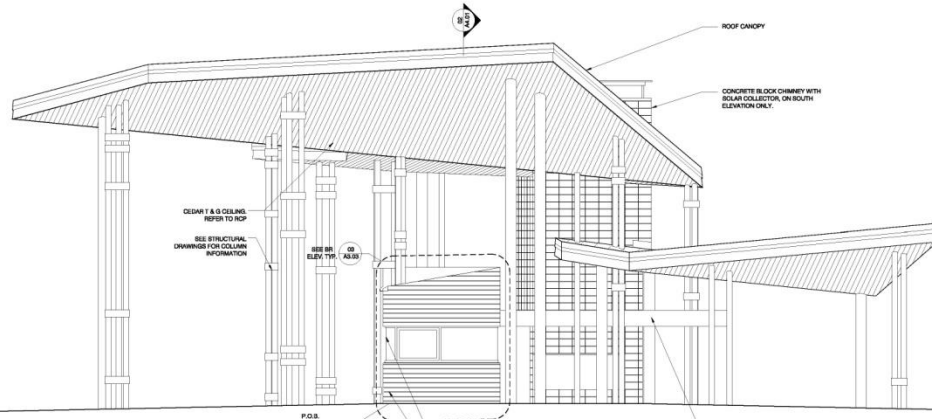
**CHECKED BY**



**03 ELEVATION DETAIL @ TYP. DECORATIVE COLUMN WRAP**  
SCALE: 1:6



**04 PLAN DETAIL @ TYP. DECORATIVE COLUMN WRAP**  
SCALE: 1:6



**02 NORTH EAST ELEVATION**  
SCALE: 1:30

GENERAL NOTE: ALL EXTERIOR COLUMNS TO BE HOT DIP GALV. PER SP10



**02 SOUTH WEST ELEVATION**  
SCALE: 1:30

GENERAL NOTE: ALL EXTERIOR COLUMNS TO BE HOT DIP GALV. PER SP10



Making money  
make sense.

04.05.2010 13:29



04.05.2010 13:40



