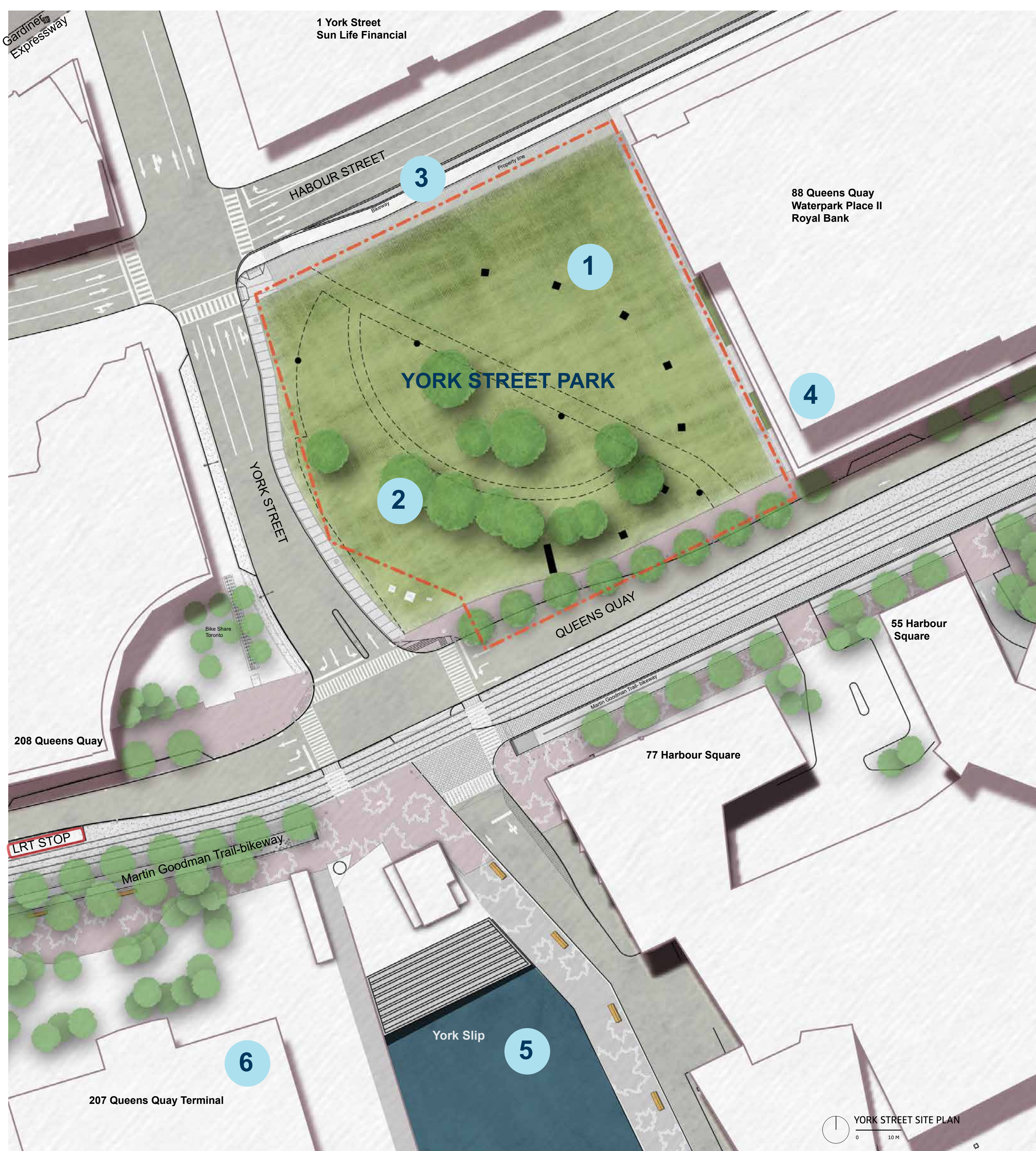


- 1 **Queens Quay Boulevard:** Toronto's signature waterfront boulevard, the public realm, dedicated LRT and Martin Goodman Trail knit together the Waterfront from west to east.
- 2 **Harbour Street:** Resulting from the removal of the York-Bay-Yonge off-ramp, Harbour Street has a new cross-section and will become a new main street in the waterfront community.
- 3 **Jack Layton Ferry Terminal:** Sees 1.4 million visitors per year departing for and arriving from Toronto Islands Park. This site attracts most of the recreational traffic to the waterfront in the summer months.
- 4 **Gardiner Expressway:** An elevated expressway that creates a monumental linear division separating Toronto's downtown from its waterfront and acting as a main thoroughfare into the city.
- 5 **Rogers Centre:** As seen from Queens Quay, the retractable roof of the Rogers Centre rises over the deck of the Gardiner Expressway north of Rees Street Park. Lit at night and bright white by day, the architectural form of the roof tops the view of the park.
- 6 **Union Station:** Canada's busiest rail and transit station. Every day Union Station brings hundreds of thousands of people within walking distance of both parks.

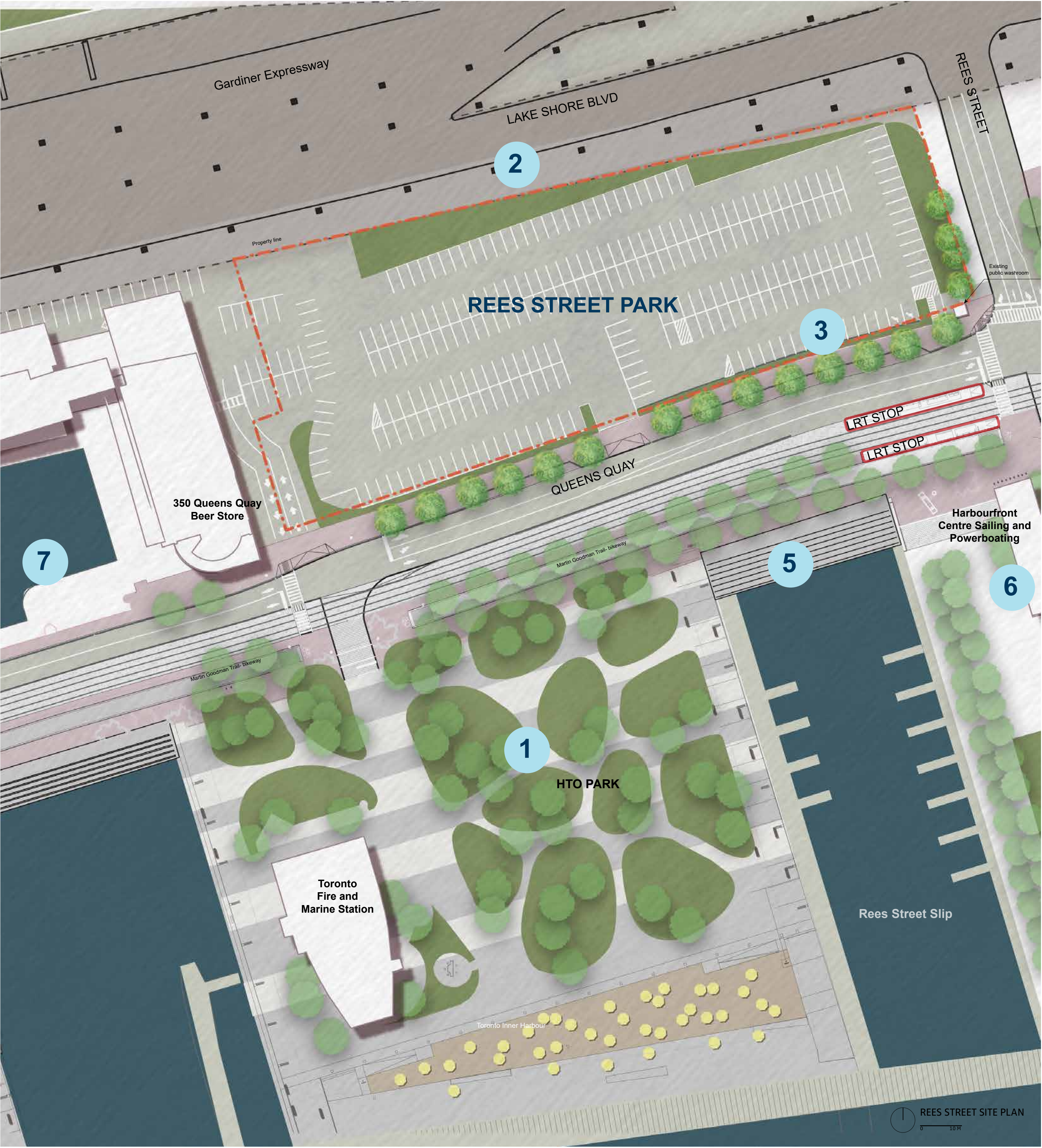
YORK STREET PARK AND REES STREET PARK CONTEXT



- 1 Eight Bents: Remnants of the off-ramp that was recently removed, these piers of the former highway recall a spiral geometry prescribed by turning radii and speed limits. These bents may be removed or incorporated into design proposals.
- 2 Twelve Trees: Eight Siberian Elms, Three Norway Maples and a Silver Maple have been preserved through the demolition of the ramp. These mature trees can contribute significantly to the park.
- 3 Harbour Street Frontage: When the York-Bay-Yonge Ramp was removed, this became a street accessible to pedestrians, permitting new patterns of use that have yet to be discovered.
- 4 Tall Buildings on Four sides: The park is framed by two office buildings and two residential buildings and will see use by the occupants of all four buildings. The view to the park that these buildings create is as critical as the frame that they provide for the space.
- 5 York Slip: located immediately south of York Street Park, York Slip is a busy quay where passengers catch water taxis and party boats.
- 6 Queens Quay Terminal: Kitty-corner to York Street Park, this building includes a grocery store, restaurants, a dance company and residences. The Toronto Book Garden on its Queens Quay Frontage is a shady green forecourt to this heritage warehouse.

York Street Park will sit between the southern extension of the Financial District, known as “South Core,” and the York Quay residential neighborhood.

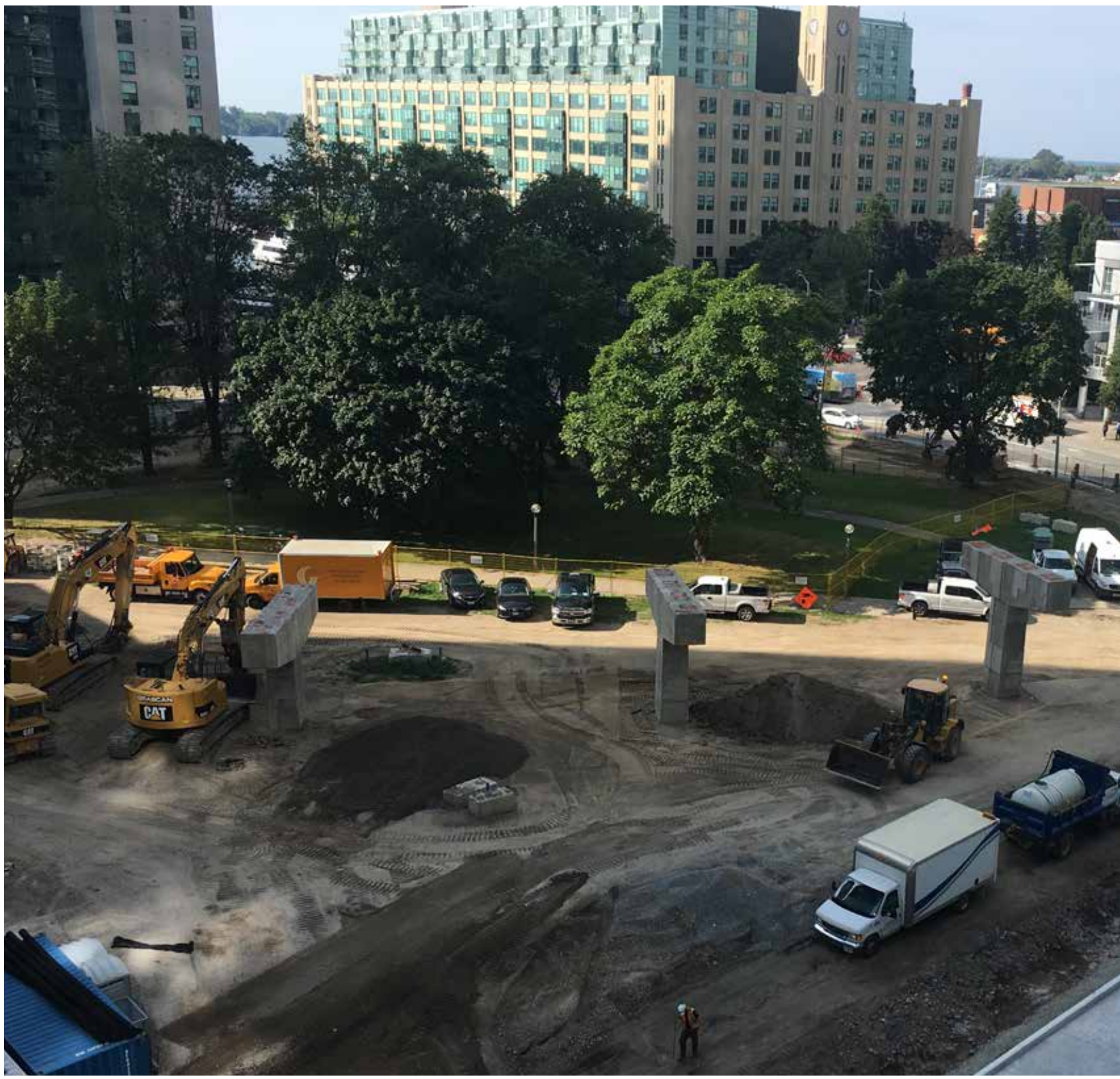
- The design of this park will need to balance its role as part of a commercial core, tourist attraction, and active neighbourhood.
- The park will occupy the site of the former York-Bay-Yonge eastbound off-ramp from the Gardiner Expressway
- The site is approximately 8,000 square metres (2 acres) in area.



- 1 HTO Park: Directly across Queens Quay to the south lies HTO park, completed in 2007. The position of this iconic park in relation to the future site of Rees St. Park with Queens Quay running between them creates a unique streetscape on the waterfront.
- 2 Frame of the Gardiner : The view of Rees Street Park from Queens Quay is neatly framed by the Gardiner Expressway, that runs along the length of the park to the north. The structural supports of the expressway are geometrical/ geographic and rhythmic spatial markers.
- 3 Future Toronto Water Stormwater Storage Shaft: Within 10-15 years, it is anticipated that the southern portion of Rees Street Park site will accommodate a stormwater storage shaft and a small structure to support the operations of the stormwater infrastrucutre.
- 4 Retail Frontage: The eastern frontage of 350 Queens Quay is currently occupied by two businesses, including a Beer Store. The businesses have potential entrances on both the east and west facades of the building
- 5 Rees Street Wavedeck: One of the Toronto waterfront's iconic wavedecks lies directly south of the site.
- 6 John Quay Powerboating/Sailing Centre: The main location for small watercraft rental, activities and lessons in the Central Waterfront, the Rees Street Slip sees plenty of active recreational traffic.
- 7 Peter Street Basin: West of Rees Street, the Peter Street Basin is the only location where Lake Ontario extends north of Queens Quay. Surrounded by retail storefronts of 350-380 Queens Quay, the Peter Street Basin and the public walkway surrounding it are public parkland managed by Parks, Forestry and Recreation.

Rees Street Park will be located in a residential part of the waterfront, to the south of the Rogers Centre and Entertainment District.

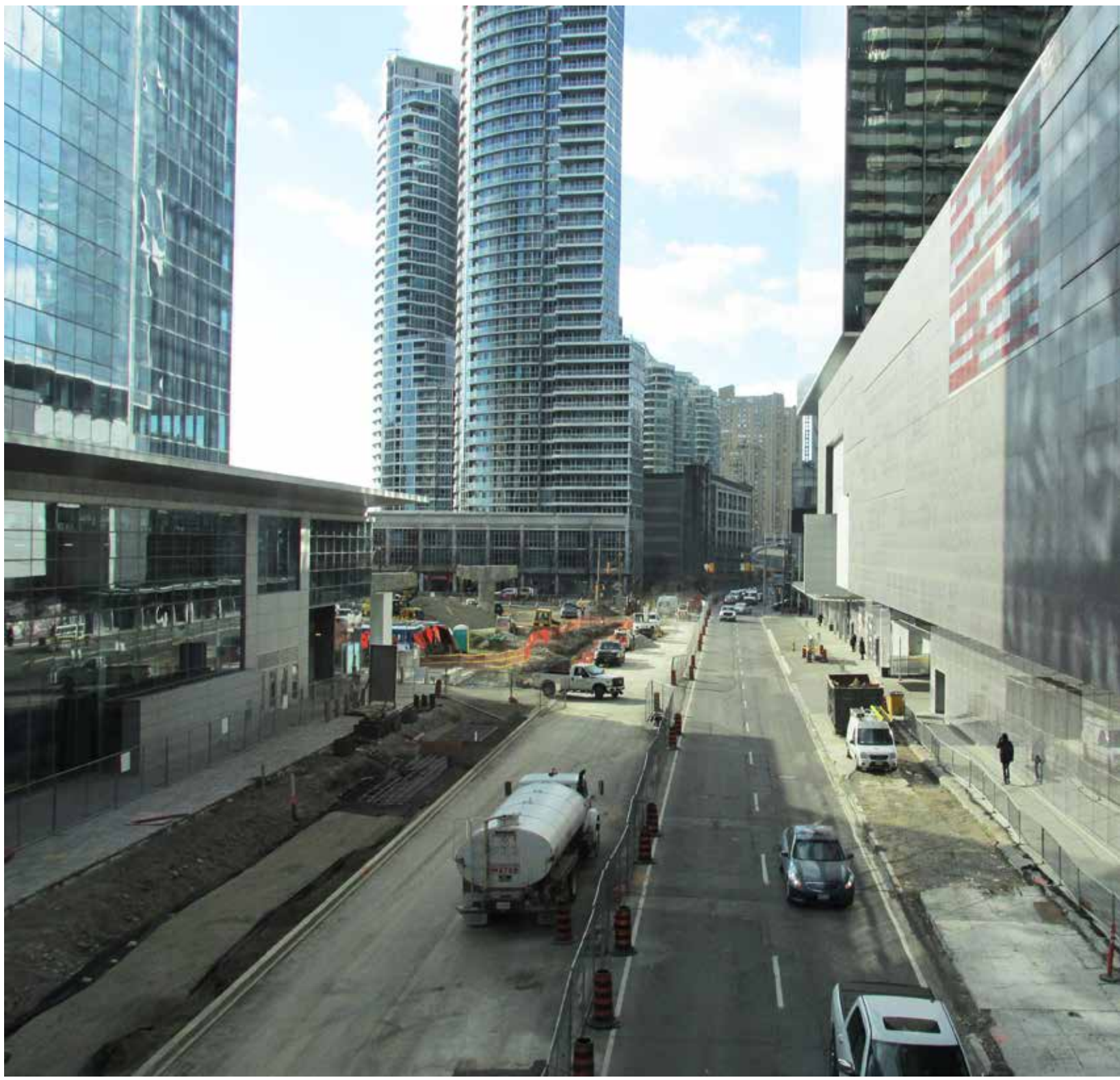
- Its north side is bordered by Lakeshore Boulevard and the elevated Gardiner Expressway.
- The site is currently operated as a parking lot by Harbourfront Centre and will be constructed as a new park upon completion of the lease.
- The site is approximately 9,500 square metres (2.3 acres) in area.



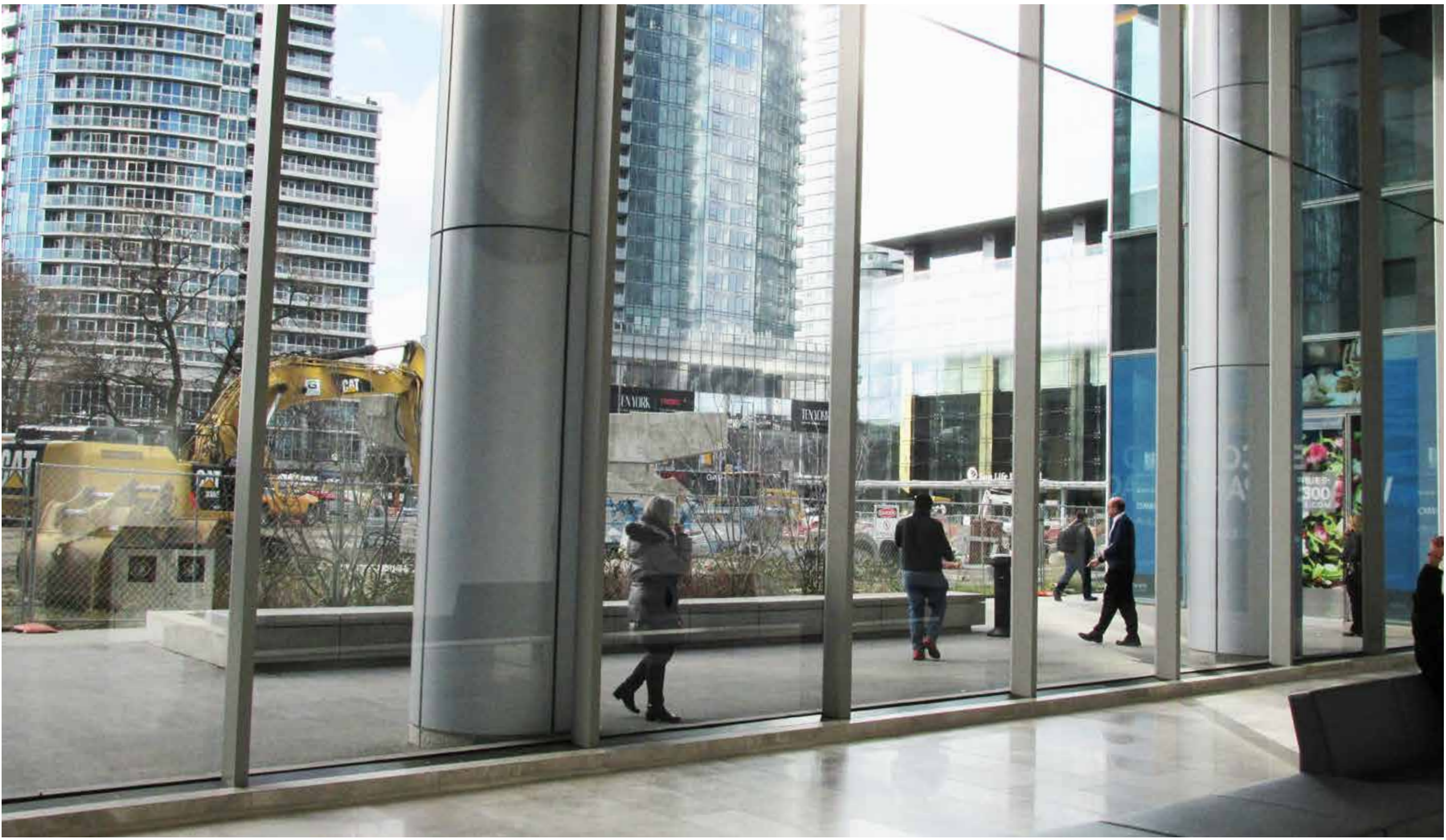
1 York Street Park – looking south from Harbour Street



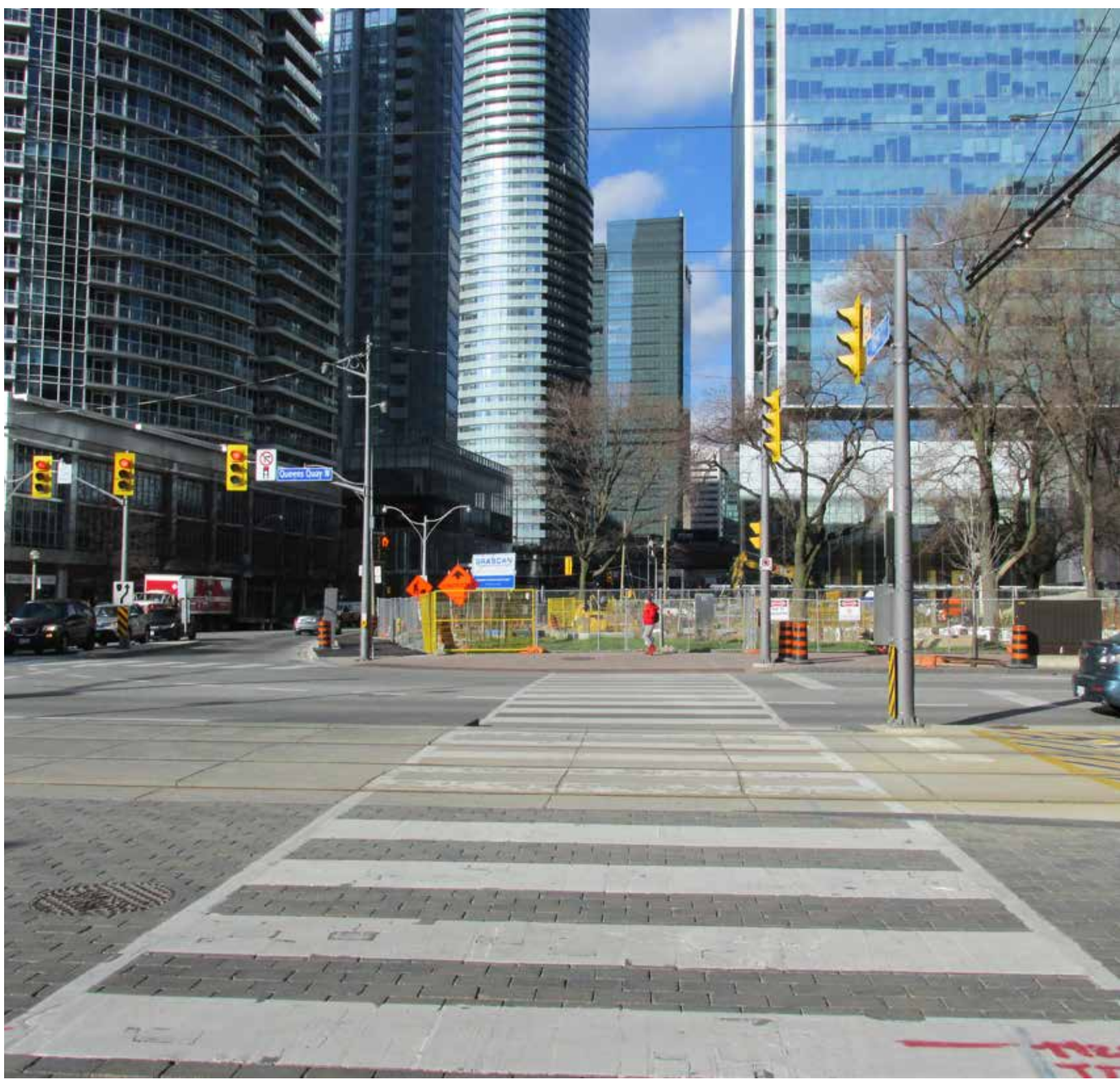
2 York Street Park – looking south from 1 York podium



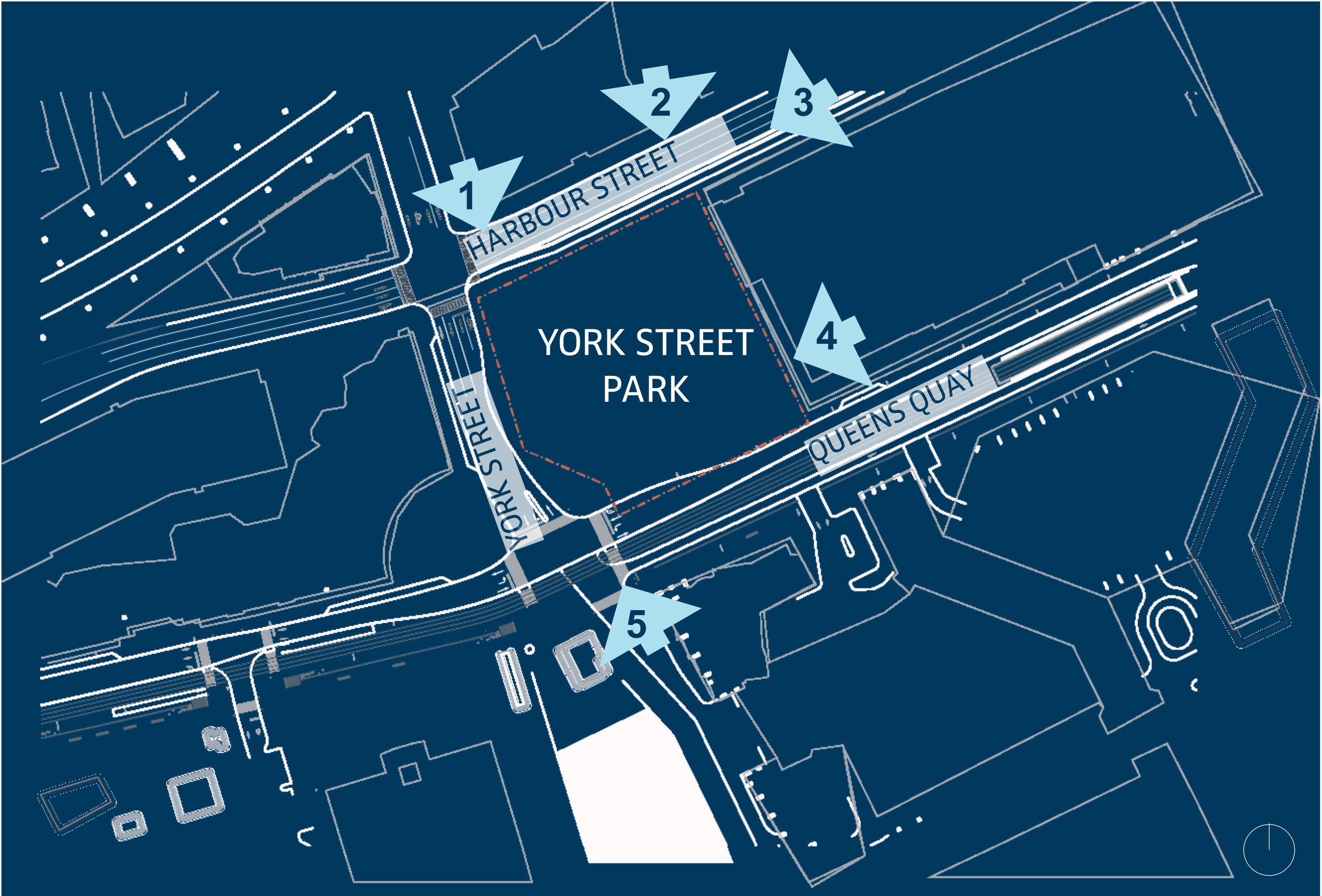
3 York Street Park – looking west from bridge over Harbour Street

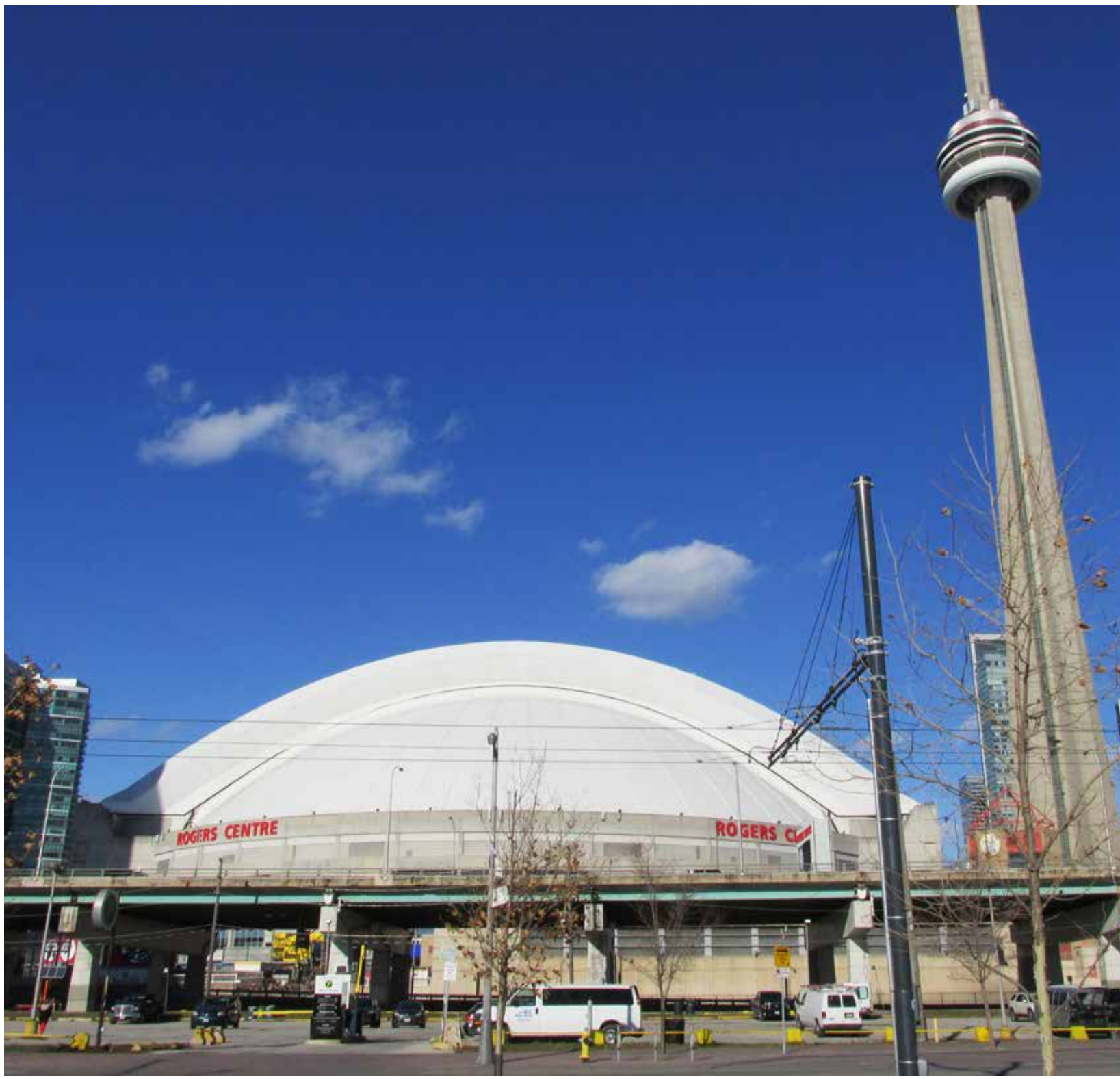


4 York Street Park – looking west from 88 Queens Quay lobby



5 York Street Park – looking north from Queens Quay





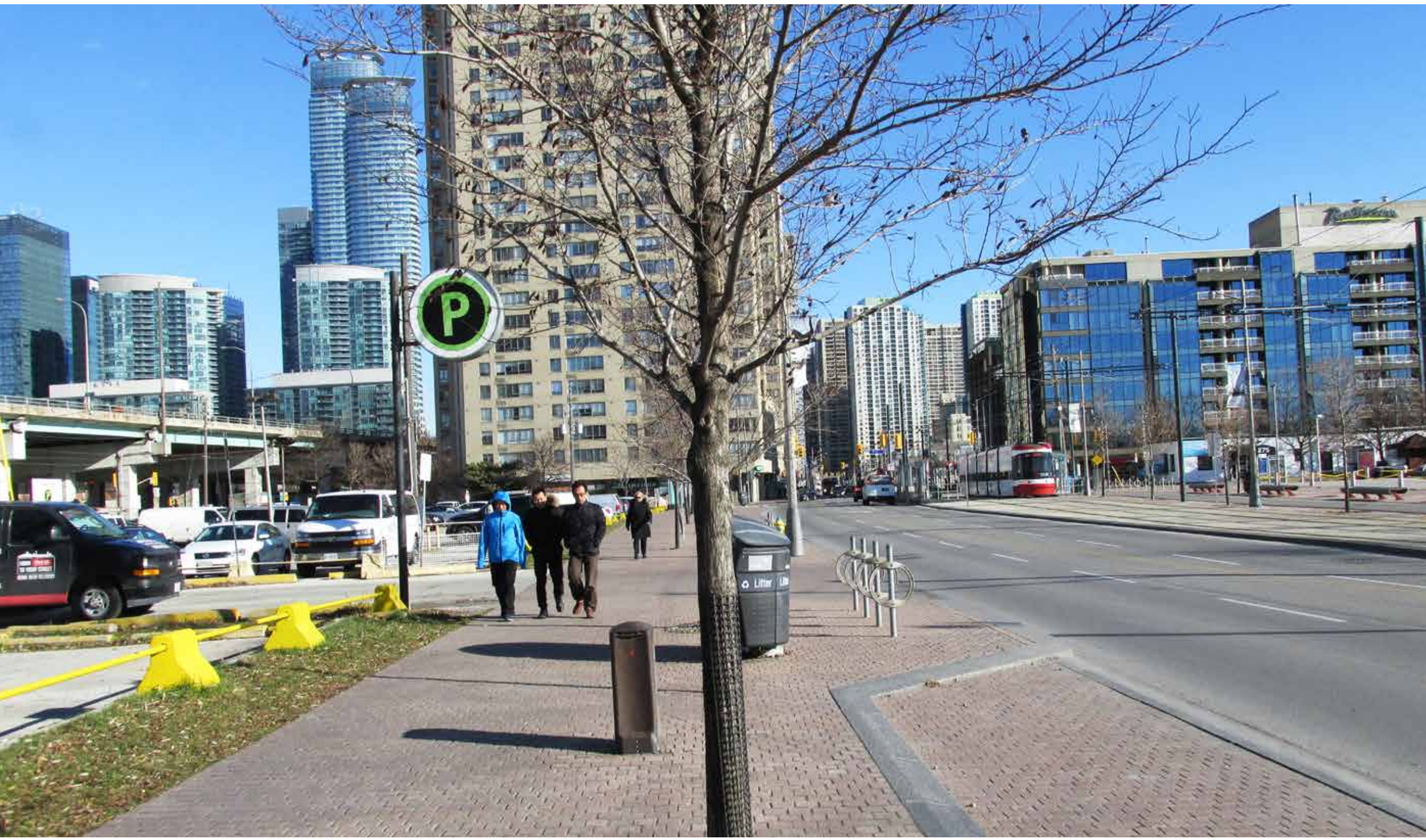
1 Rees Street Park – looking north from Queens Quay



2 Rees Street Park – looking North from HTO Park



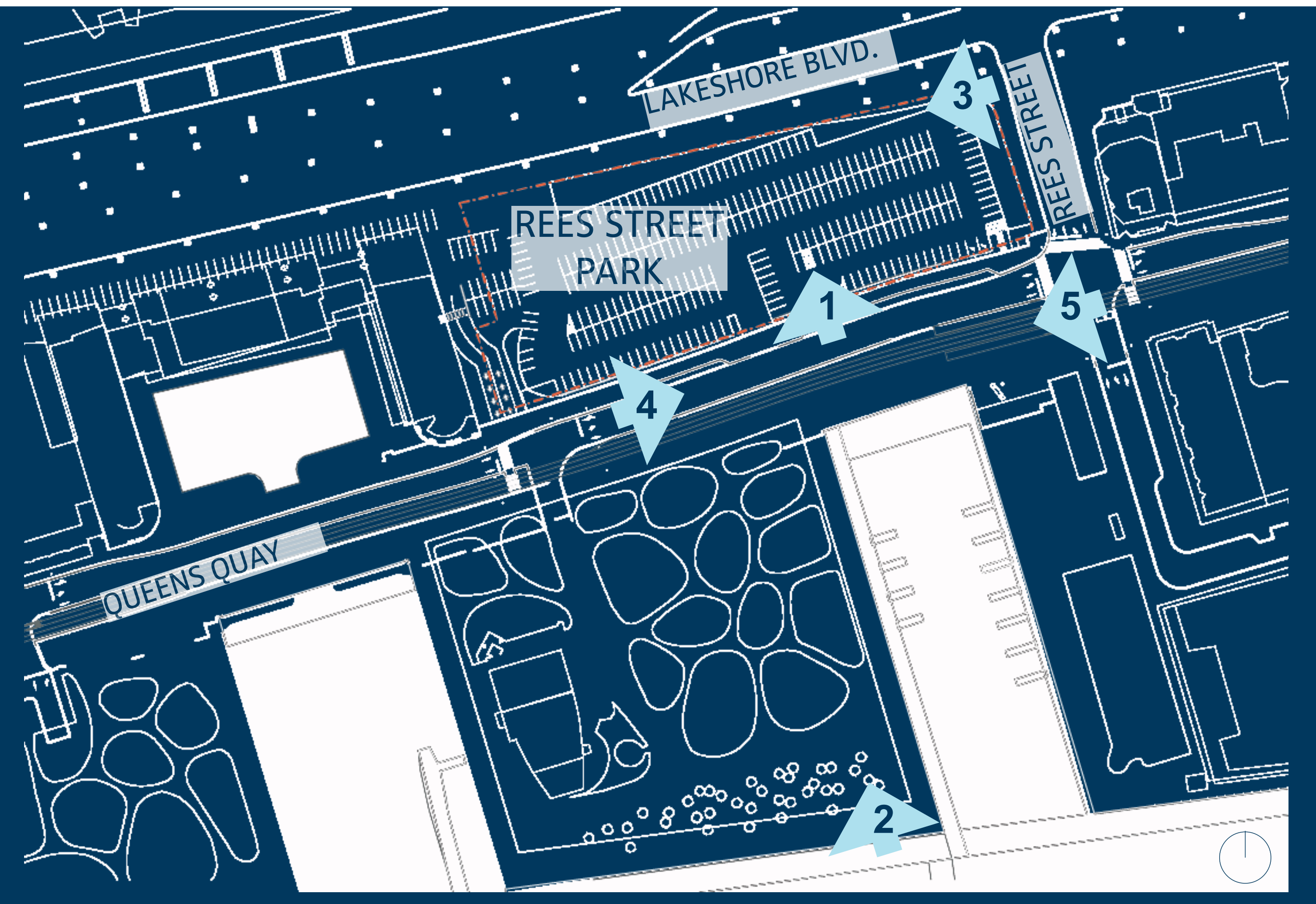
3 Rees Street Park – looking west from Lake Shore and Rees



4 Rees Street Park – looking east from Queens Quay



5 Rees Street Park – looking north from Queens Quay



REES STREET PARK- KEY VIEWS





JACOB JAVITZ PLAZA, NEW YORK NY



BRYANT PARK, NEW YORK NY



CAMPUS MARTIUS, DETROIT MI



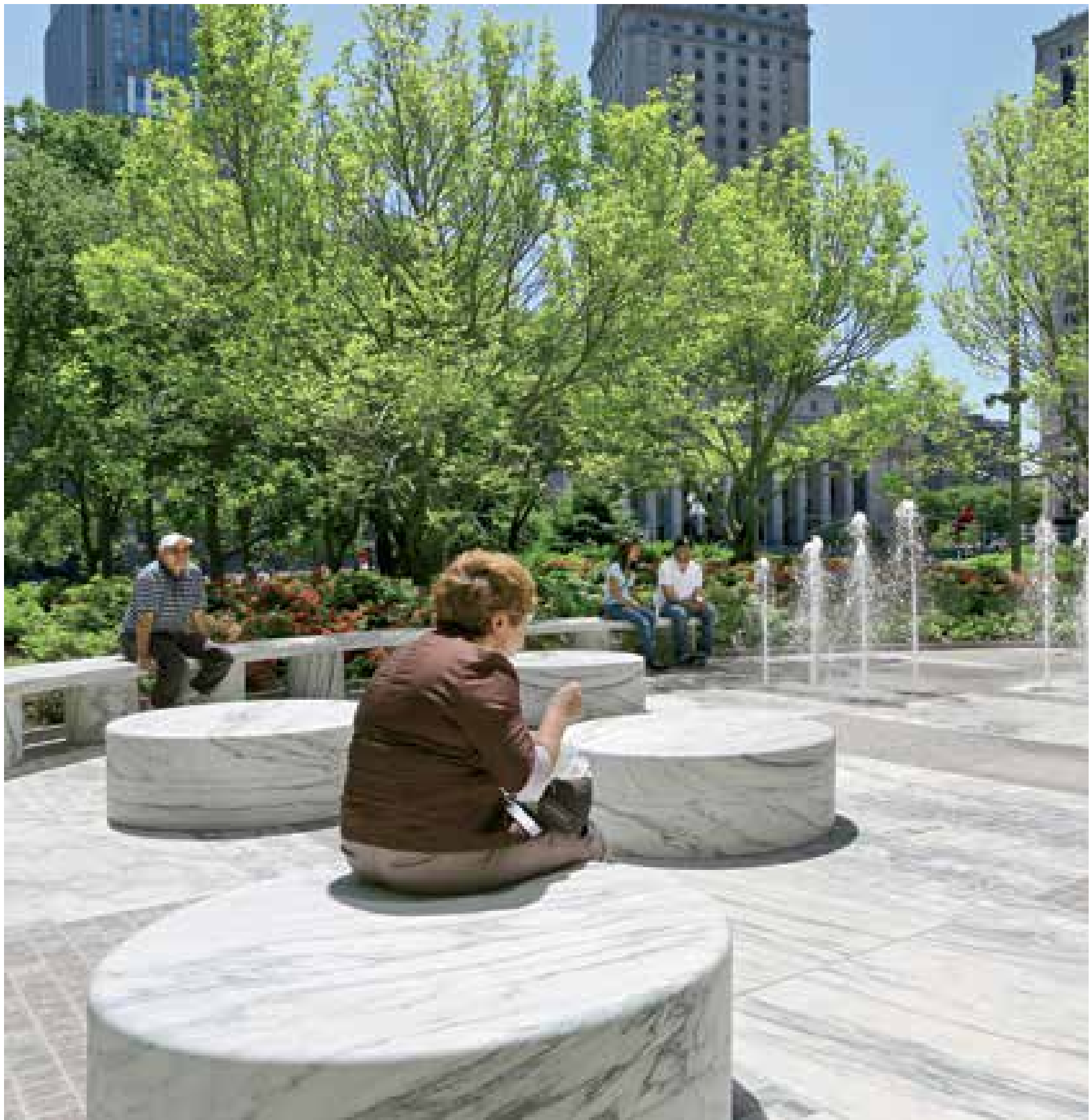
PARK PRECEDENTS



JACOB JAVITZ PLAZA, NEW YORK NY

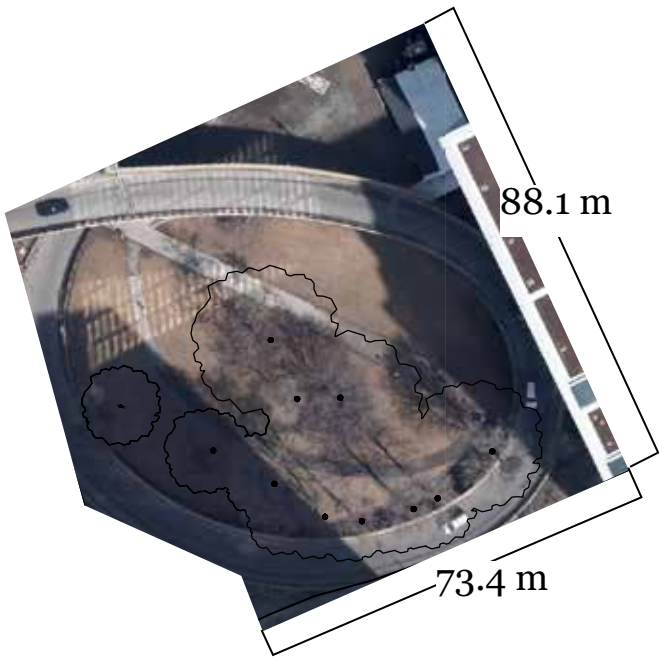


JACOB JAVITZ PLAZA, NEW YORK NY



IDEA PRECEDENTS

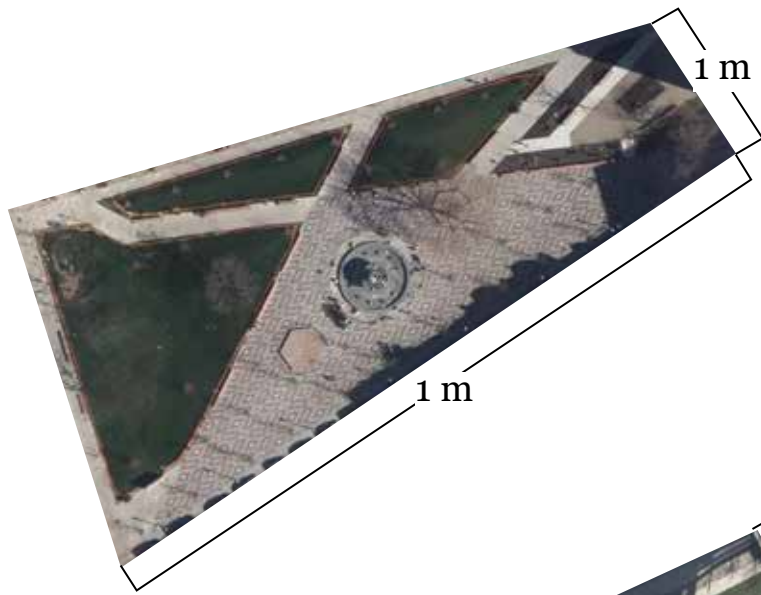




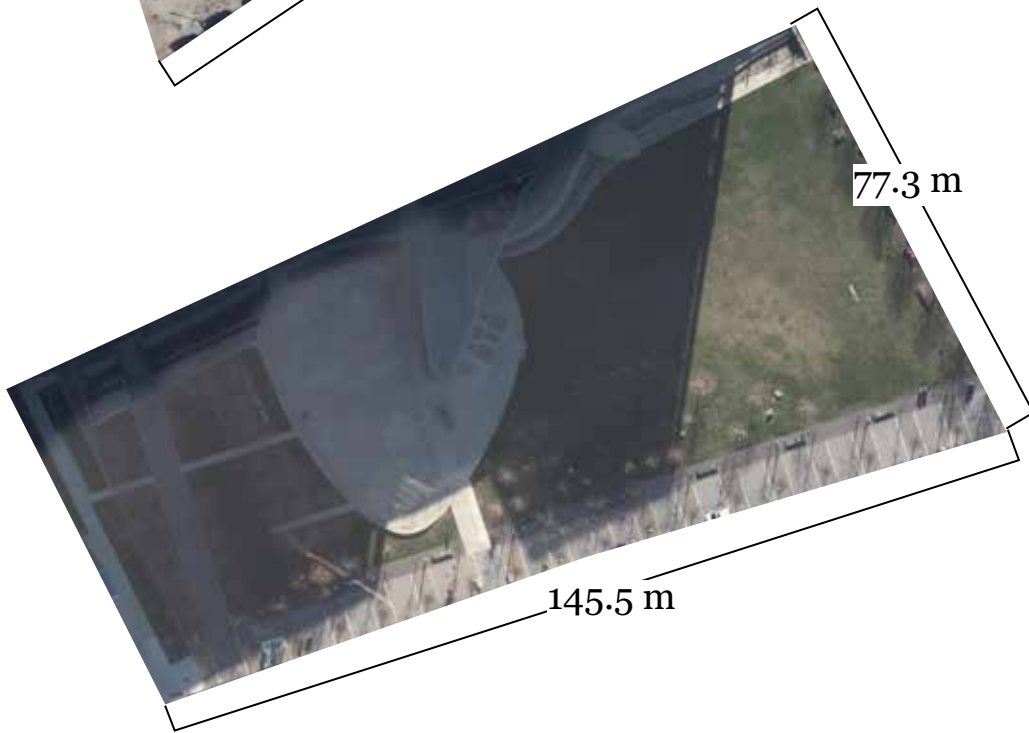
YORK STREET PARK
SIZE = 7,779 SQM



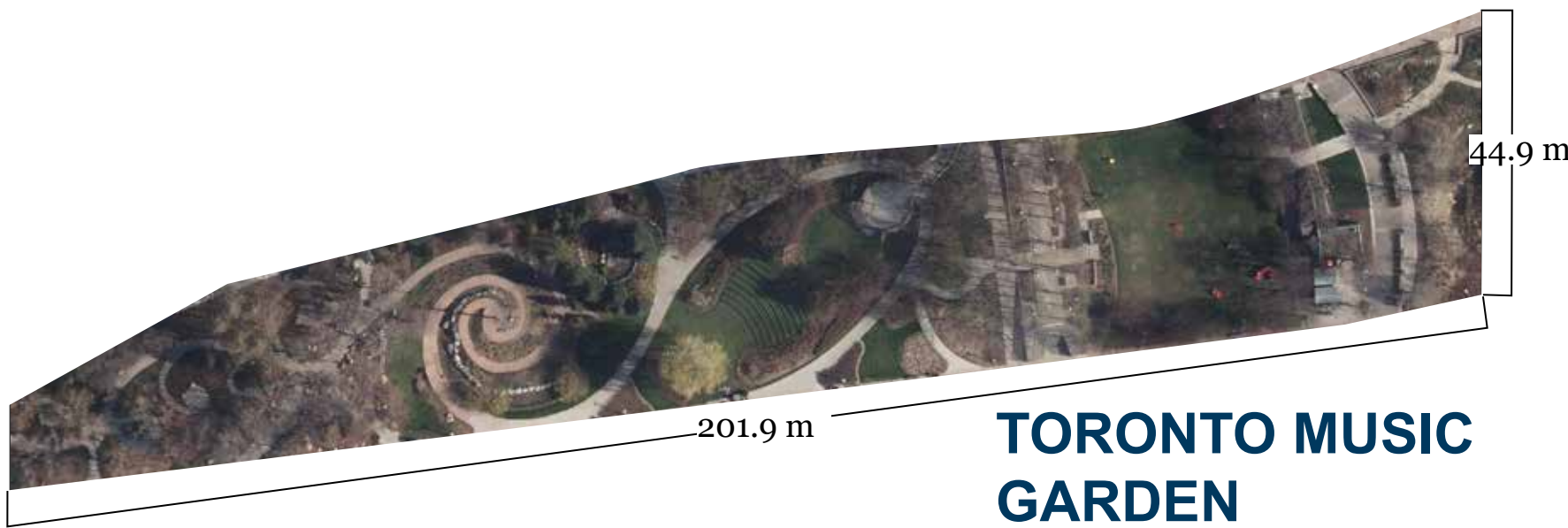
REES STREET PARK
SIZE =9,587 SQM



BERCZY PARK
SIZE =3,606 SQM



**SHERBOURNE
COMMON SOUTH**
SIZE =10,800 SQM



**TORONTO MUSIC
GARDEN**
SIZE = 15,050 SQM



HTO PARK EAST
SIZE =13,220 SQM



GRANGE PARK
SIZE =18,000 SQM