



# **AITKEN PLACE PARK** AND BAYSIDE PRIVATE DRIVES

---

Community Update Meeting

2015 July 9

Queens Quay Place (C1)

Future Mews

Queens Quay Place (C2)

Future Mews

Edgewater Drive

Future Development (R6)

Merchants' Wharf

Aquavista (R3, R4)

Garden Promenade

Knoll

Shelter

Dog Run

Kanadario Lane

Future Development (R5)

Edgewater Drive

Merchants' Wharf

Hillock

Urban Porch

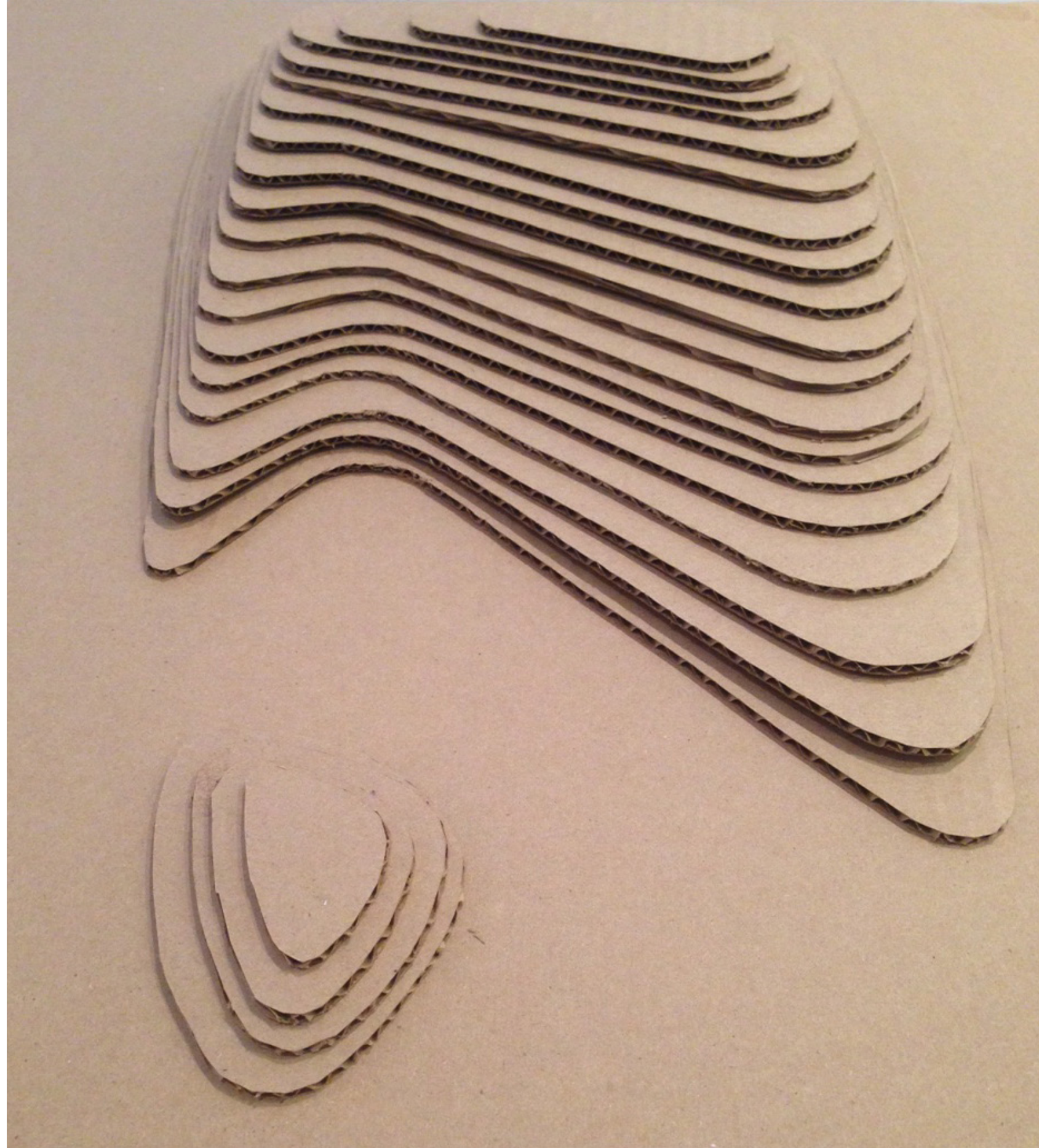
Merchants' Wharf

Water's Edge Promenade

Lake Ontario









TRAFFIC TABLE

ACCESSIBLE RAMP

SWIVEL CHAIRS

SEATING NOOKS/WORK SPACES

STAIRS

TODDLER PLAY AREA

SUNNING / SLEDDING  
PLAY SLOPE

PALEO-TEC PAVERS

GRANITE SLAB PAVERS

SEATWALL

ACCESSIBLE RAMP

SWIVEL CHAIRS

STONE DUST

CORTEN SHELTER  
WITH WOOD FLOOR

5% SLOPED TRAIL

WATER RILL

TALL GRASSES

PLAY, CLIMBING OBJECTS

WATER PLAY TABLE

ACCESSIBLE RAMP

KANADARIO LANE

SEAT LEDGE











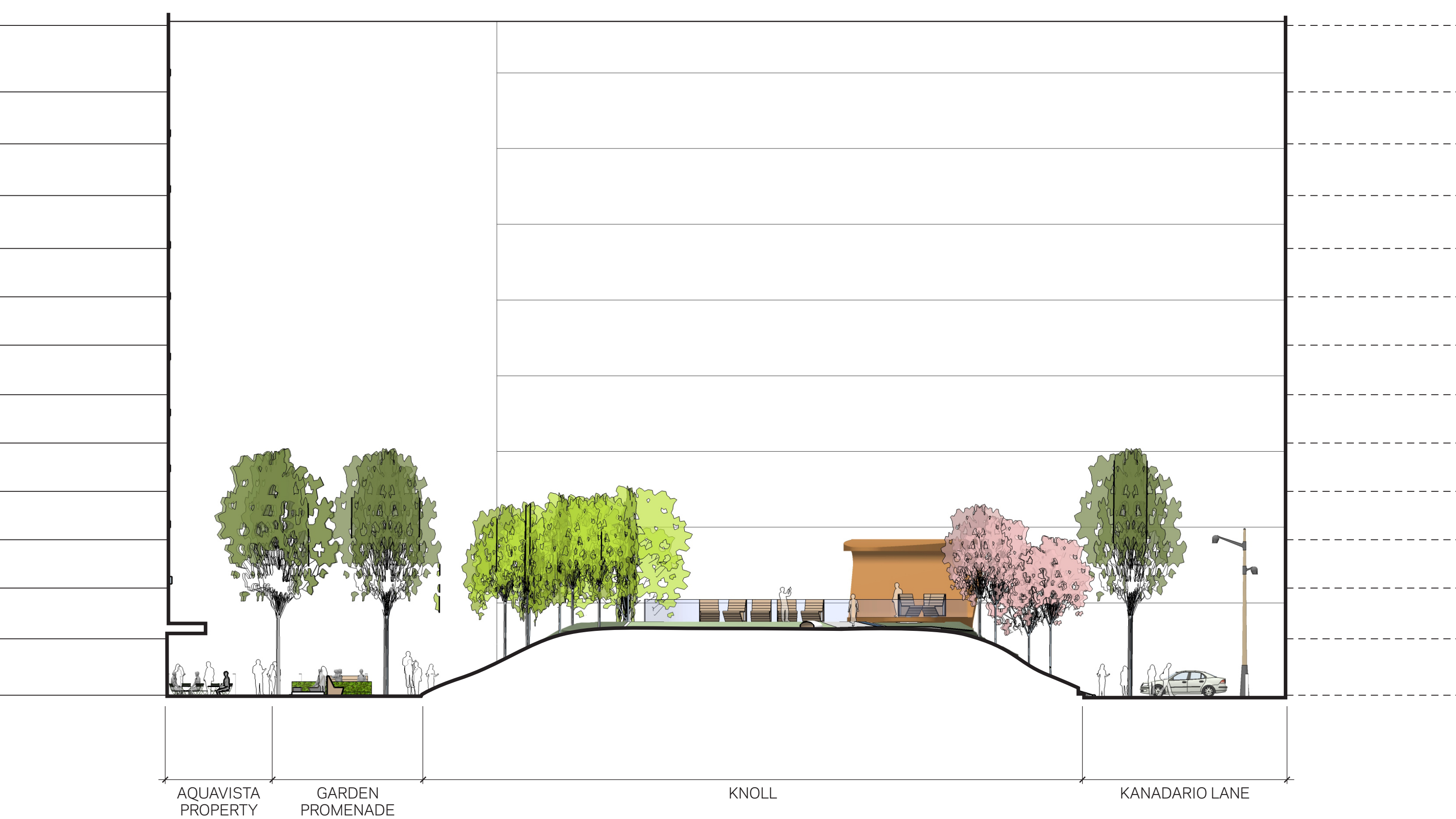
← WATER'S EDGE PROMENADE    MERCHANTS' WHARF    URBAN PORCH    KNOLL    DOG RUN    EDGEWATER DRIVE

COMMUNITY UPDATE MEETING  
**AITKEN PLACE PARK**  
 AND BAYSIDE PRIVATE DRIVES

2015/07/09

Scott TORRANCE LANDSCAPE ARCHITECT INC. thomas**balsley**associates

**NORTH/SOUTH LONGITUDINAL SECTION**



AQUAVISTA  
PROPERTY

GARDEN  
PROMENADE

KNOLL

KANADARIO LANE

Hunter's Point South Park New York, NY

Total Park Area: 44,515 m<sup>2</sup>

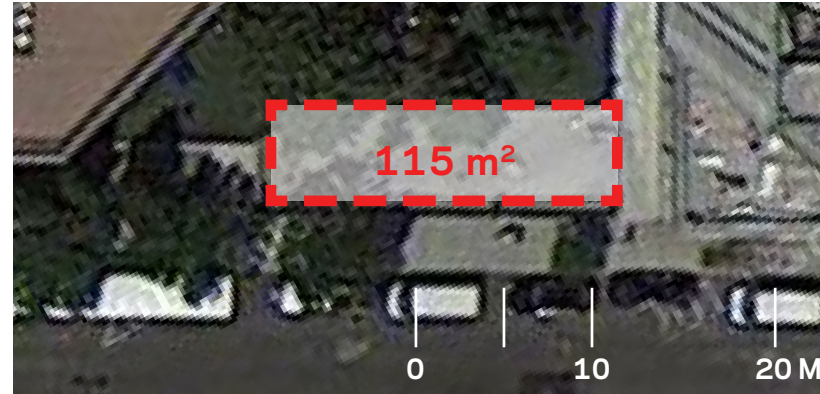
Dog Run Area: 170 m<sup>2</sup>



Silver Park New York, NY

Total Park Area: 2,144 m<sup>2</sup>

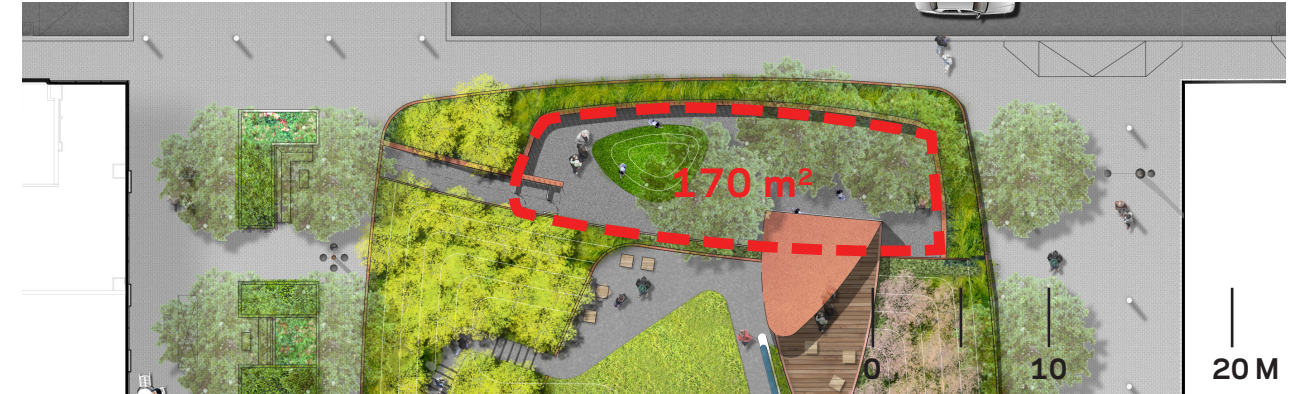
Dog Run Area: 115 m<sup>2</sup>



Aitken Place Park

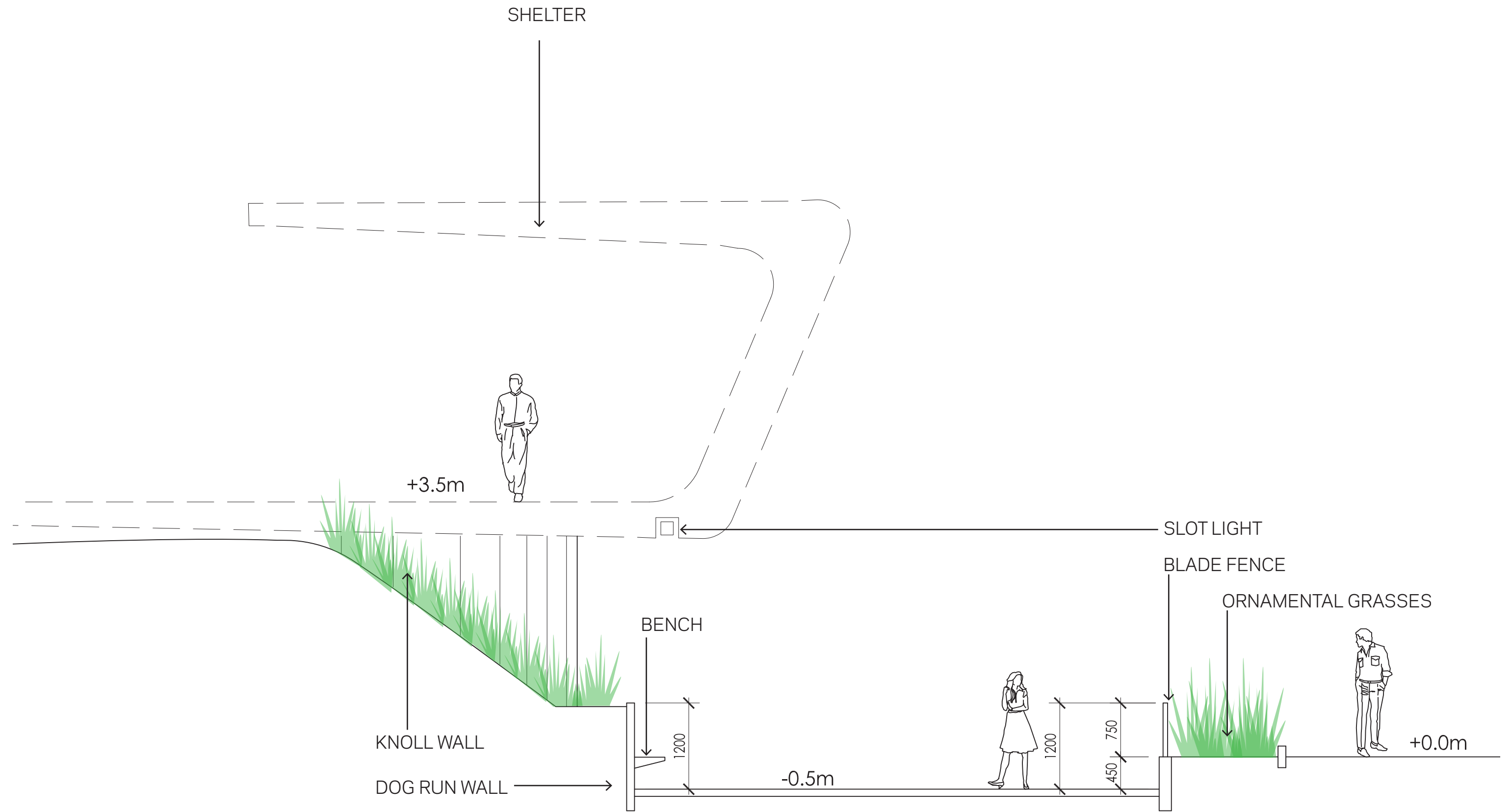
Total Park Area: 3,000 m<sup>2</sup>

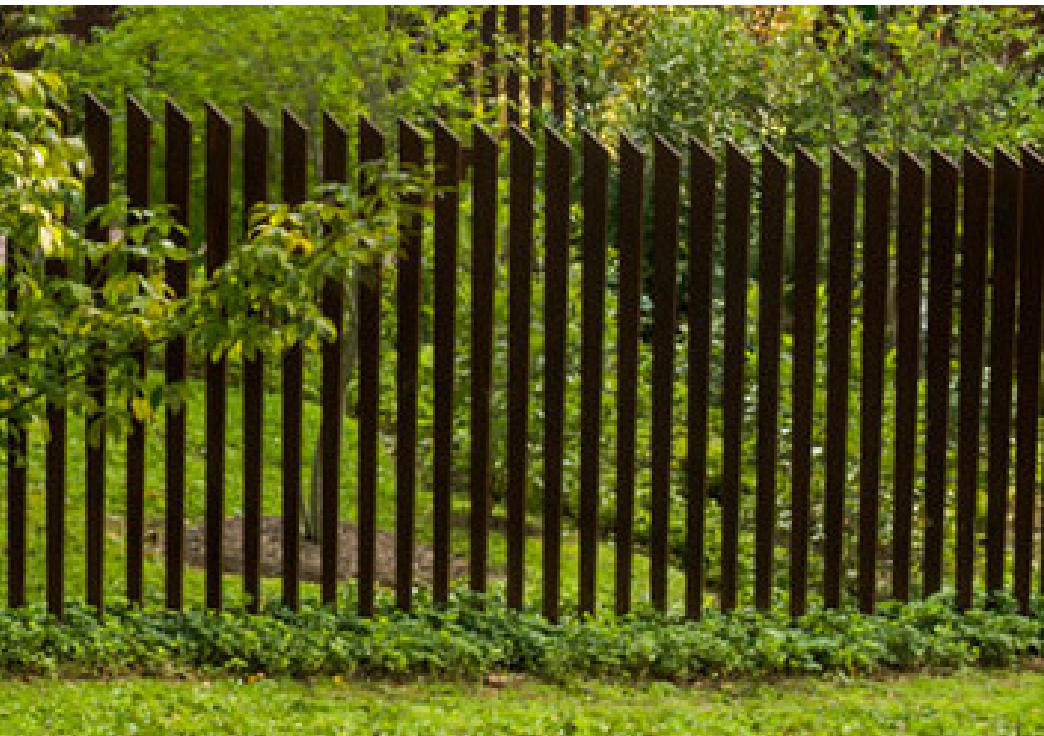
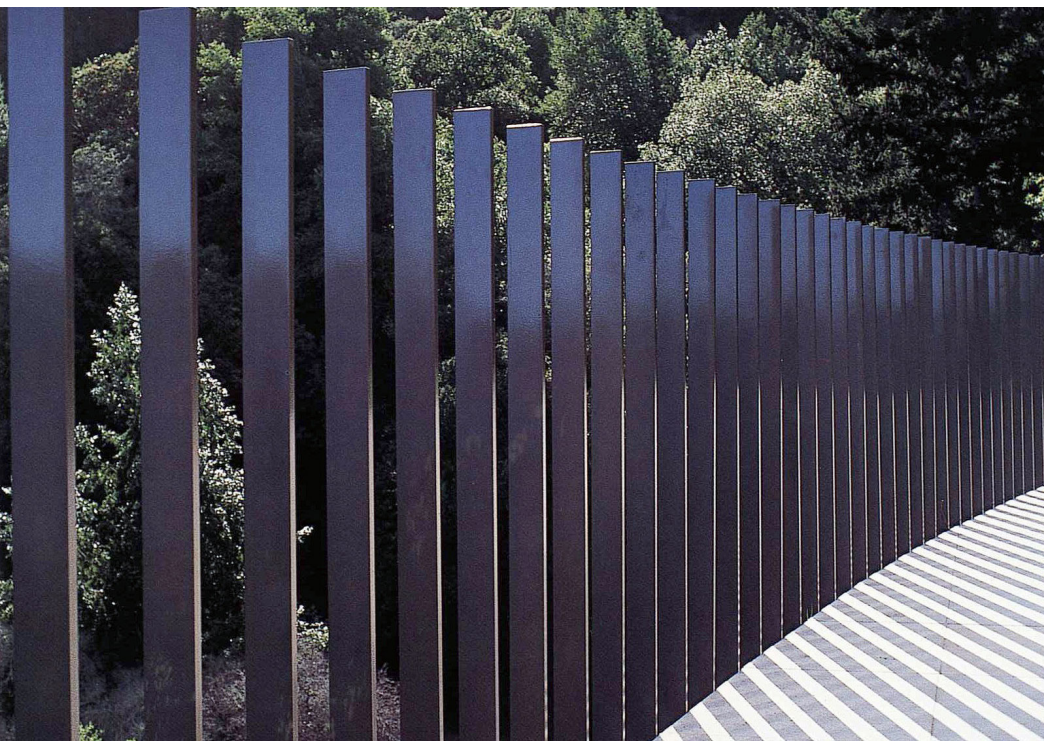
Dog Run Area: 170 m<sup>2</sup>



- K-9 TURF MOUND
- PLANTING BUFFER
- CORTEN BLADE FENCE
- ACCESSIBLE RAMP
- DOUBLE GATE
- CRUSHED GRANITE
- CORTEN DOG RUN WALL







SECTIONAL SEATING



LOUNGE CHAIRS



PICNIC TABLE



SWIVEL CHAIRS



MOVEABLE CHAIRS



WALL BENCH



HILLSIDE OBJECTS



SLEDDING HILL



WATER TABLE



WATER RILL



SLOPE PLAY



SLOPE PLAY



PLAY TOWER



SLIDE

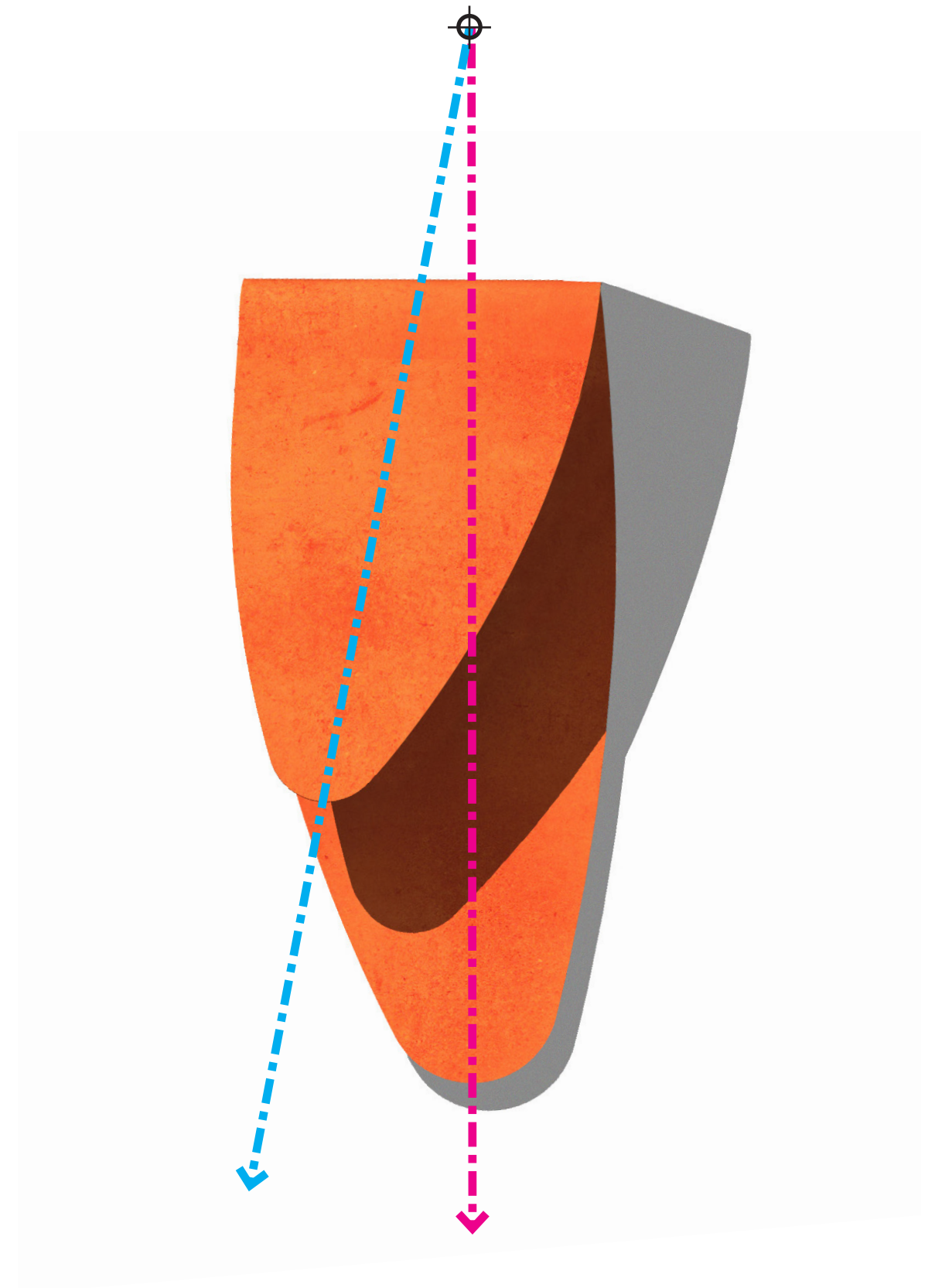
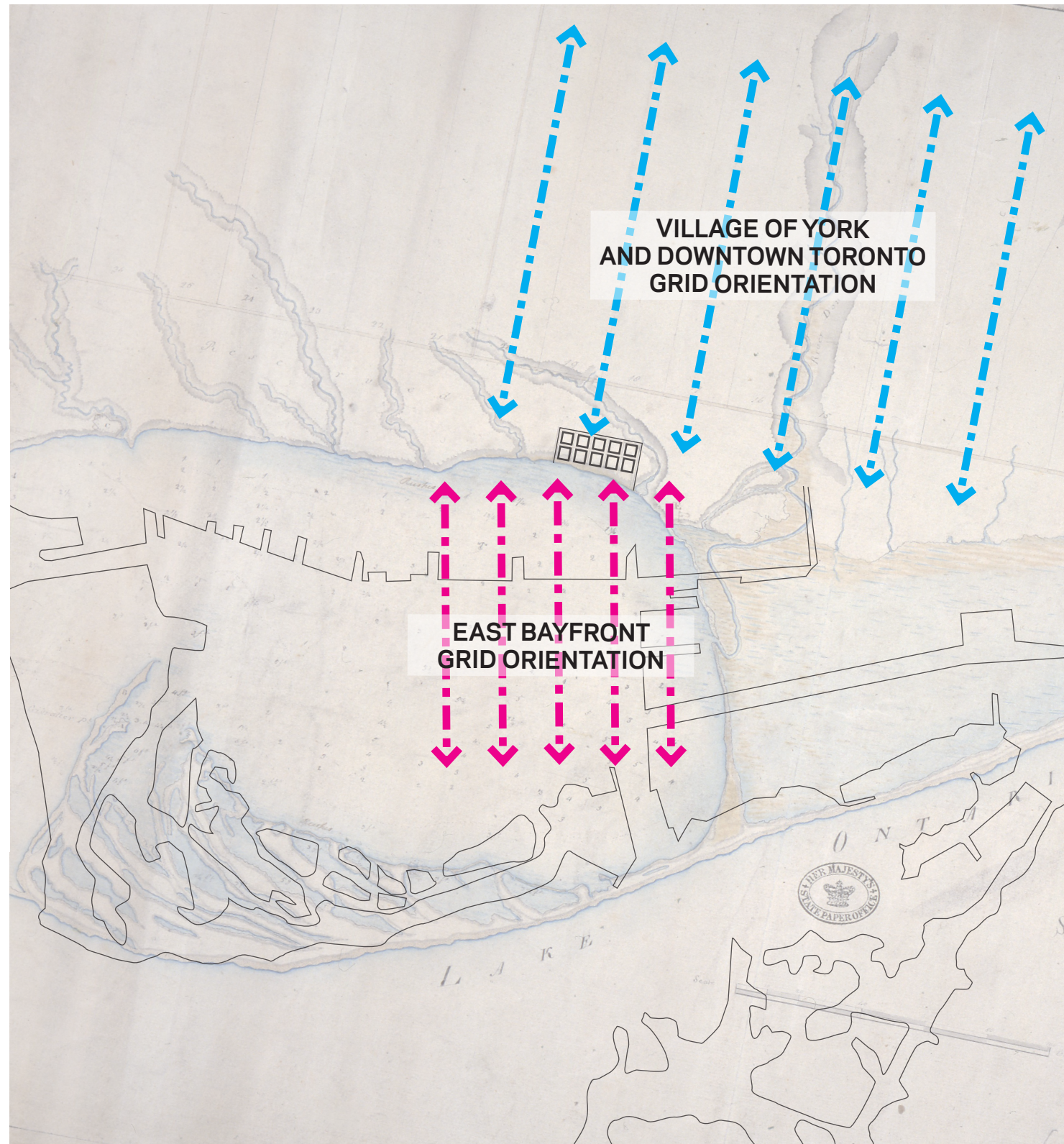


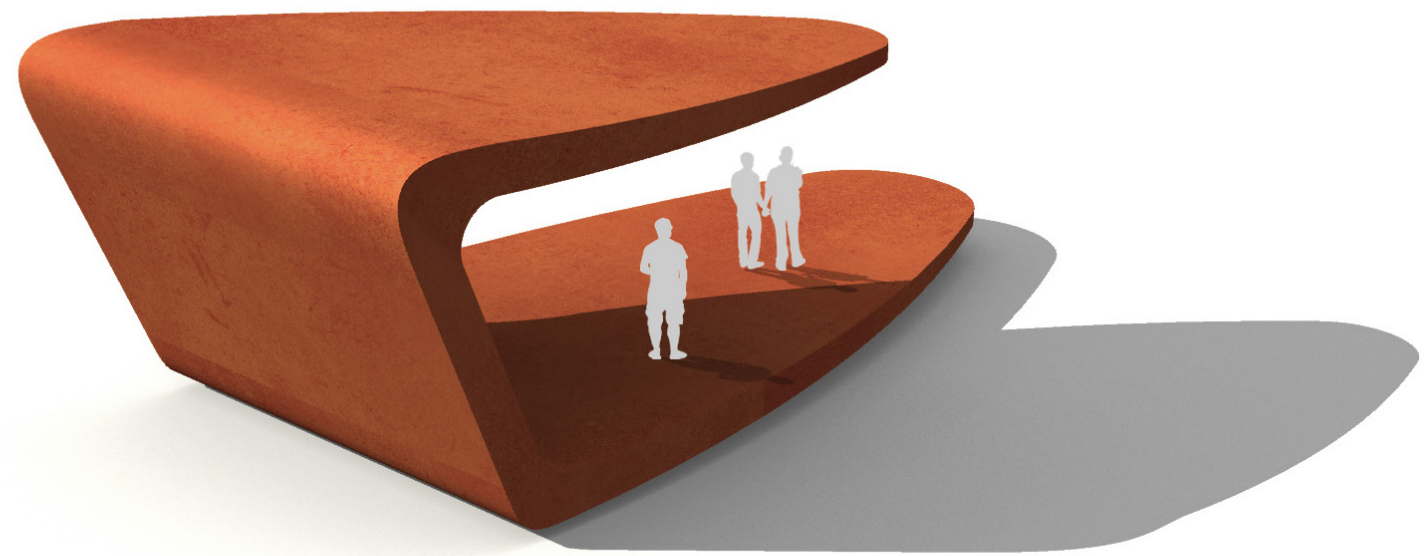
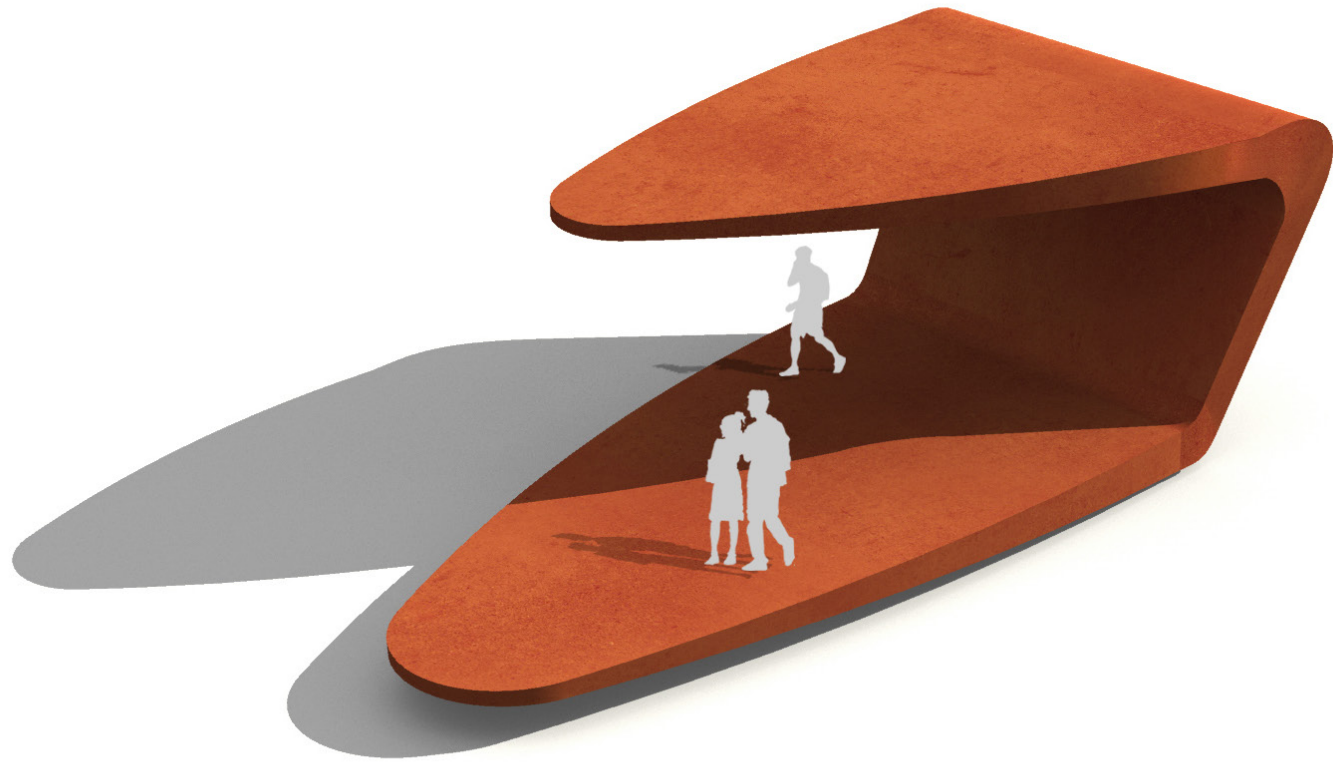










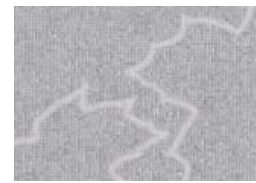


**Catalogue**

A language of materials, colours, textures and finishes

**Paving Surfaces**

**Granite Mosaic**  
2-tone granite pavers forming mosaic leaf pattern (Outline and Silhouette)



Outline leaf mosaic



Silhouette leaf mosaic

**Granite Types**  
Canadian Red and San Sebastian Grey for Mosaic; Caledonia Grey for curbstones on streetscapes



Royal Canadian Red



San Sebastian Grey



Caledonia Grey

**Granite cobbles**  
Size: 90 x 90 x 80mm  
Top finish: Light Waterjet  
Side finish: Split  
Joints: 5-8mm

**Concrete unit paver**  
Paleo Tec auto-blocking precast pavers



Paleo Tec - light grey

**Materials & Finishes**

**Wood**  
Yellow Cedar - Structural Timbers  
Ipe - Decking and Benches



Yellow Cedar - Structural Glulam Timbers

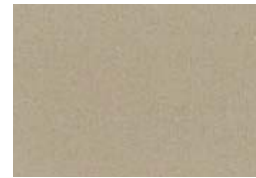


Ipe - Decking and Benches

**Metal Finishes**  
Laser cut steel and cast aluminum with paint system application  
Galvanized steel  
Stainless Steel - brushed



RAL 7016 Anthracite grey



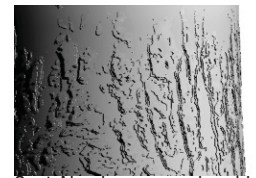
RAL 7048 Pearl mouse grey



Galvanized steel



Stainless steel - brushed



Cast Aluminum - sand mold, bark texture

**Colours**  
For use on signage applications



RAL 7016 Anthracite grey



RAL 7048 Pearl mouse grey



Pantone



Pantone



Pantone

**Details**  
For use throughout the waterfront



Stainless steel guiding spots



Stainless steel handrail



Stainless steel bollard



Galvanized steel mooring



Galvanized steel toe rail



Large sized toe rail



Garbage & Recycling bin



Preserve existing mooring elements where possible - paint anthracite grey (RAL 7016)



Yellow coated warning spots

**Phasing**

Over time, existing furnishings and details will be replaced by the new family of furnishings within a phasing process that incrementally transforms the Central Waterfront into a coherent district - within realistic capital budgets and timeframes. A legible identity for the Central Waterfront must be reinforced by the details of furnishings and urban elements.



**PAVING SURFACES**

Paleotec Concrete Pavers



**FURNISHINGS**

Ipe Furniture



**CURBS/WALLS**

Granite Walls



**SHELTER/FENCES**

Corten Clad



**PLAY ELEMENTS**

Stone Hillside Objects



Granite Porch Slabs



Stainless Steel Bollards



Corten Dog Run Wall



Butt-glass Railings



Stone Runnel



Crushed Granite



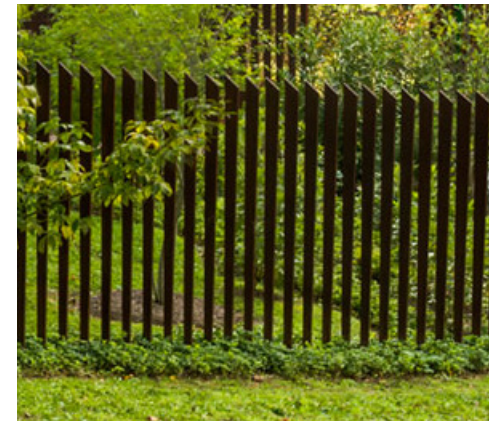
Movable Furniture



Corten Curb



Corten Blade Fence



Stone Water Table










Cove Lighting

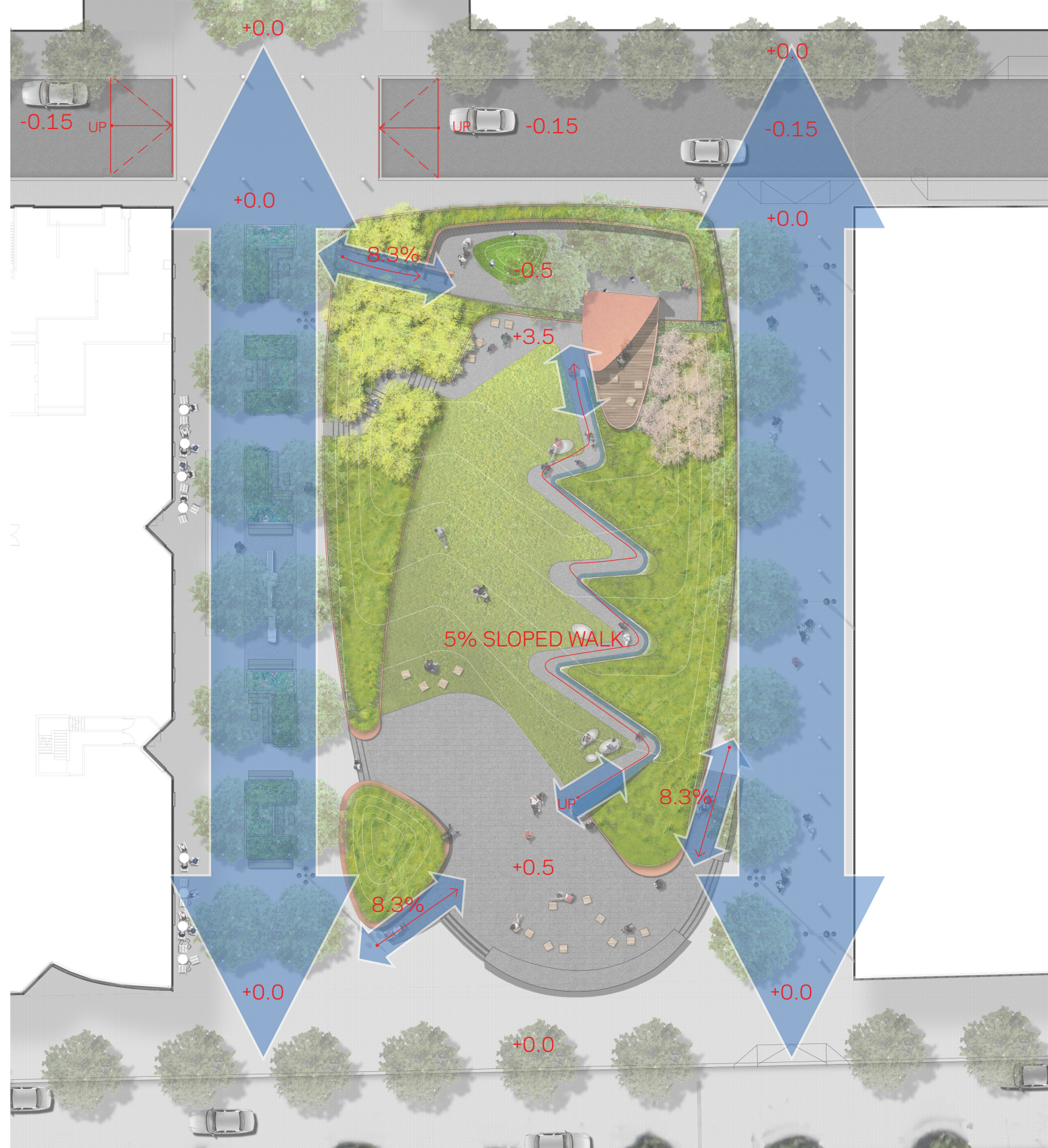


Tall Mast Lighting

Legend:

-  Signature Light Post (outside park scope)
-  Tall Mast Light
-  Tall Mast Light w/ Public Art Component
-  Cove Lighting
-  Shelter Lighting







**LEGEND**

- Canopy Trees
- Grove
- Flowering Grove
- Understorey
- Grasses
- Mixed Border Planting
- Garden Promenade Hedge
- Lawn

**Trees:**

- Acer miyabei
- Ulmus americana cultivar ('Pioneer', 'Valley Forge', or 'Accolade')
- Zelkova serrata

**Grove:**

- Betula nigra
- Betula papyrifera
- Betula populifolia
- Cercidiphyllum japonicum
- Larix laricina or decidua
- Pinus strobus
- Pinus sylvestris
- Quercus bicolor
- Sassafras albidum

**Flowering Grove:**

- Amelanchier spp.
- Cercis canadensis
- Cornus alternifolia
- Prunus spp.

**Understorey:**

- (west side)*
- Diervilla lonicera
  - Euonymus obovatus
  - Mahonia repens
  - Rhus aromatica 'Gro-Lo'
  - Rubus odoratus
  - Taxus canadensis
  - Xanthorhiza simplicissima

*(east side)*

- Ceanothus americanus
- Hydrangea quercifolia
- Mahonia repens
- Microbiota decussata
- Myrica pensylvanica
- Physocarpus opulifolius
- Potentilla fruticosa
- Rubus odoratus
- Sorbaria sorbifolia
- Taxus x media
- Viburnum dentatum
- Xanthorhiza simplicissima

**Grasses:**

- Carex sprengelii
- Chasmanthium latifolium
- Deschampsia cespitosa
- Sesleria autumnalis
- Schizachryum scoparium
- Sporobolus heterolepis

**Mixed Border Planting:**

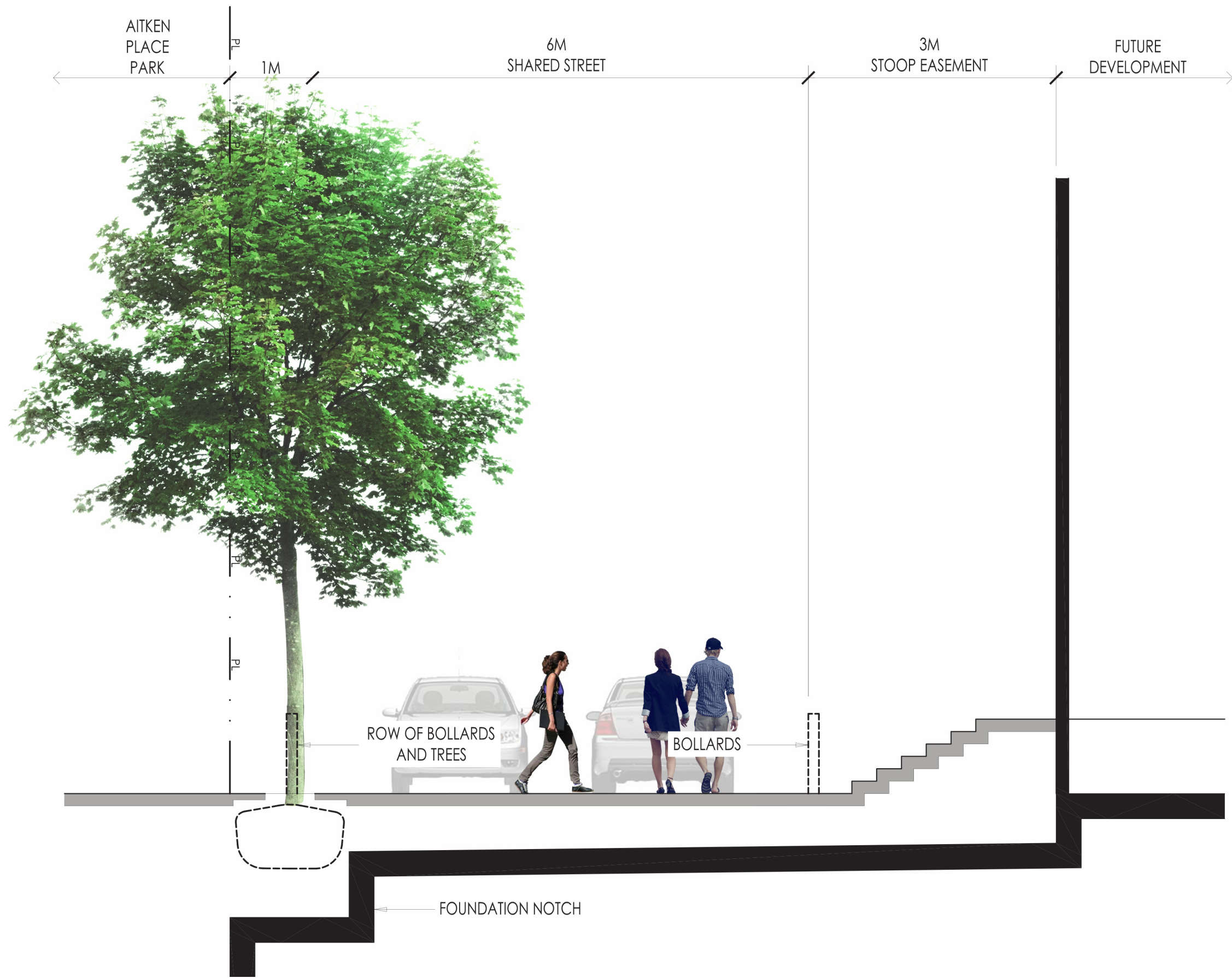
- Amsonia 'Blue Ice'
- Astilbe chinensis var. pumila
- Ceratostigma plumbaginoides
- Eurybia divaricata
- Fragaria virginiana
- Geranium x cantabrigiense
- Heuchera macrorhiza
- Heuchera richardsonii
- Pachysandra procumbens
- Solidago flexicaulis
- Waldsteinia fragarioides/ternata
- Zizia aurea

*(bulbs)*

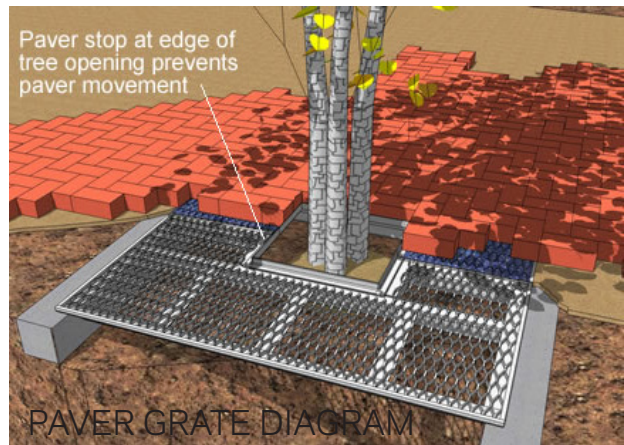
- Anemone blanda
- Camassia spp
- Galanthus nivalis
- Leucojum aestivum
- Hyacinthoides hispanica
- Narcissus
- Tulipa fosteriana cv.

**Garden Promenade Hedge:**

- Buxus spp.



PAVER GRATE 



Queens Quay Place (C1)

Future Mews

Queens Quay Place (C2)

Future Mews

Edgewater Drive

Future Development (R6)

Merchants' Wharf

Aquavista (R3, R4)

Garden Promenade

Knoll

Dog Run

Shelter

Kanadario Lane

Future Development (R5)

Edgewater Drive

Merchants' Wharf

Hillock

Urban Porch

Merchants' Wharf

Water's Edge Promenade

Lake Ontario

