

WATERFRONTToronto

Lake Ontario Park

Master Plan and Phase 1 Board Approval

May 13th, 2009



lake ontario park

master plan

prepared for WATERFRONToronto

field operations + schollen & company

kidd consulting, north-south environmental, nina-marie lister, ccl/ibi, poulos & chung, archaeological services



Lake Ontario Park Master Plan

Primary Goals:

- 1. Promote a bold flexible and resilient landscape framework.**
- 2. Create a vibrant lakefront of distinctive activities and unique water-oriented programming.**
- 3. Build a connective system to unify the park.**
- 4. Cultivate a rich mosaic of terrestrial and aquatic life that becomes the center of a continuous regional greenway.**
- 5. Create a realistic and sustainable landscape.**
- 6. Preserve and amplify the remarkably unique settings.**

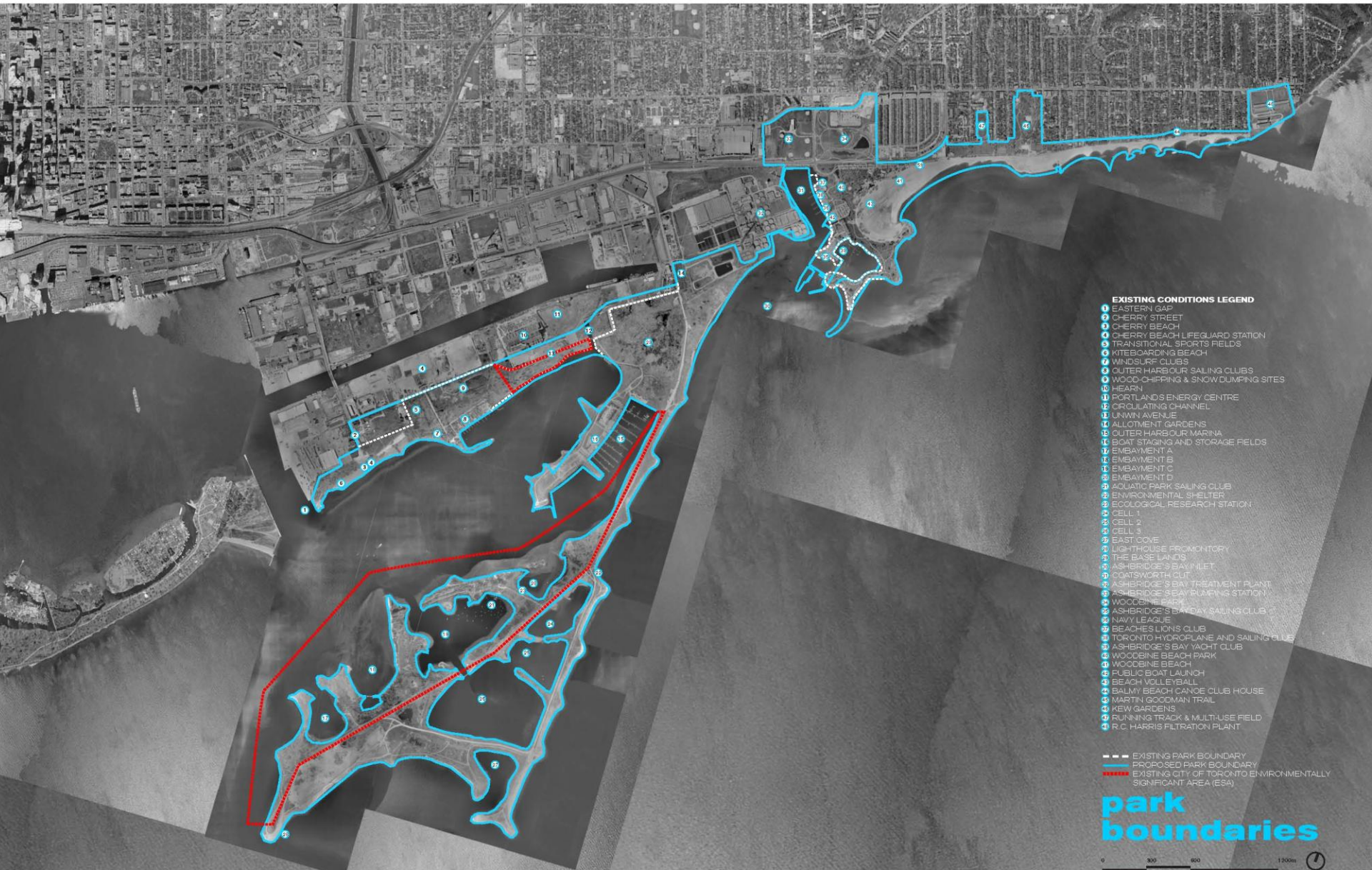


humber valley

don valley

lake ontario park

LAKE ONTARIO PARK AND THE RAVINES
THE RAVINES ARE THE DEFINING LANDSCAPE OF TORONTO.
LAKE ONTARIO PARK SHOULD MATCH THE POWER OF THE RAVINE PARK AND
OPEN SPACE SYSTEM BY CREATING A SIGNATURE LAKEFRONT PARK THAT
PROVIDES A CONTINUOUS GREENWAY FOR HUMAN AND WILDLIFE USE



EXISTING CONDITIONS LEGEND

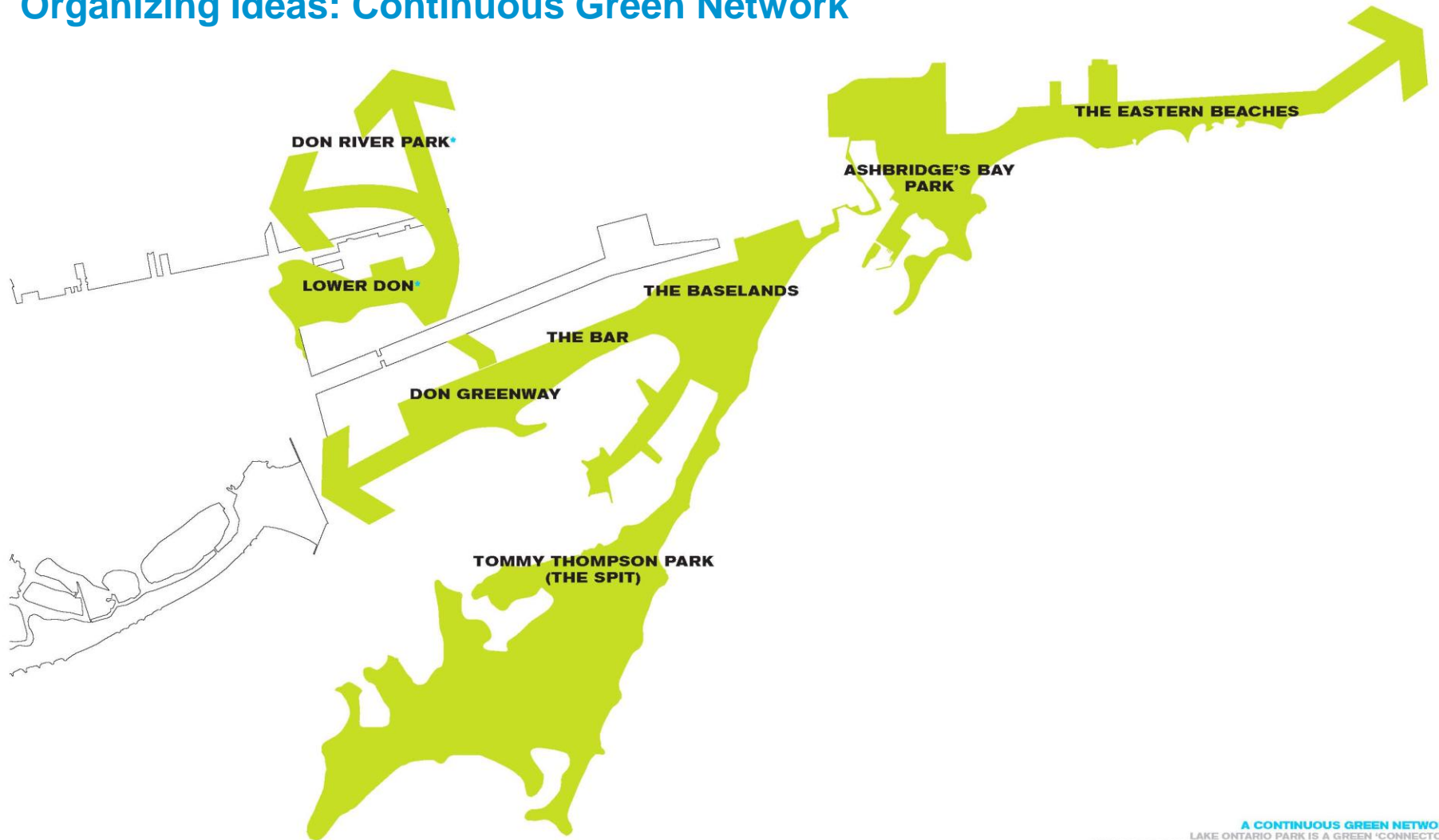
- 1 EASTERN GAP
- 2 CHERRY STREET
- 3 CHERRY BEACH
- 4 CHERRY BEACH LIFE GUARD STATION
- 5 TRANSITIONAL SPORTS FIELDS
- 6 KITEBOARDING BEACH
- 7 WINDSURF CLUBS
- 8 OUTER HARBOUR SAILING CLUBS
- 9 WOOD-CHIPPING & SNOW DUMPING SITES
- 10 HEARN
- 11 PORTLAND'S ENERGY CENTRE
- 12 CIRCULATING CHANNEL
- 13 UNWIN AVENUE
- 14 ALLOTMENT GARDENS
- 15 OUTER HARBOUR MARINA
- 16 BOAT STAGING AND STORAGE FIELDS
- 17 EMBAYMENT A
- 18 EMBAYMENT B
- 19 EMBAYMENT C
- 20 EMBAYMENT D
- 21 AQUATIC PARK SAILING CLUB
- 22 ENVIRONMENTAL SHELTER
- 23 ECOLOGICAL RESEARCH STATION
- 24 CELL 1
- 25 CELL 2
- 26 CELL 3
- 27 EAST COVE
- 28 LIGHTHOUSE PROMONTORY
- 29 THE BASE LANDS
- 30 ASHBRIDGE'S BAY WILLET
- 1 ASHBRIDGE'S BAY WILLET
- 2 COATSWORTH CUT
- 3 ASHBRIDGE'S BAY TREATMENT PLANT
- 4 ASHBRIDGE'S BAY PUMPING STATION
- 5 WOODBINE BEACH
- 6 ASHBRIDGE'S BAY DAY SAILING CLUB
- 7 NAVY LEAGUE
- 8 BEACHES LIONS CLUB
- 9 TORONTO HYDROPLANE AND SAILING CLUB
- 10 ASHBRIDGE'S BAY YACHT CLUB
- 11 WOODBINE BEACH PARK
- 12 WOODBINE BEACH
- 13 PUBLIC BOAT LAUNCH
- 14 BEACH VOLLEYBALL
- 15 BALMY BEACH CANOE CLUB HOUSE
- 16 MARTIN GOODMAN TRAIL
- 17 KEW GARDENS
- 18 RUNNING TRACK & MULTI-USE FIELD
- 19 R.C. HARRIS FILTRATION PLANT

- EXISTING PARK BOUNDARY
- PROPOSED PARK BOUNDARY
- EXISTING CITY OF TORONTO ENVIRONMENTALLY SIGNIFICANT AREA (ESA)

park boundaries



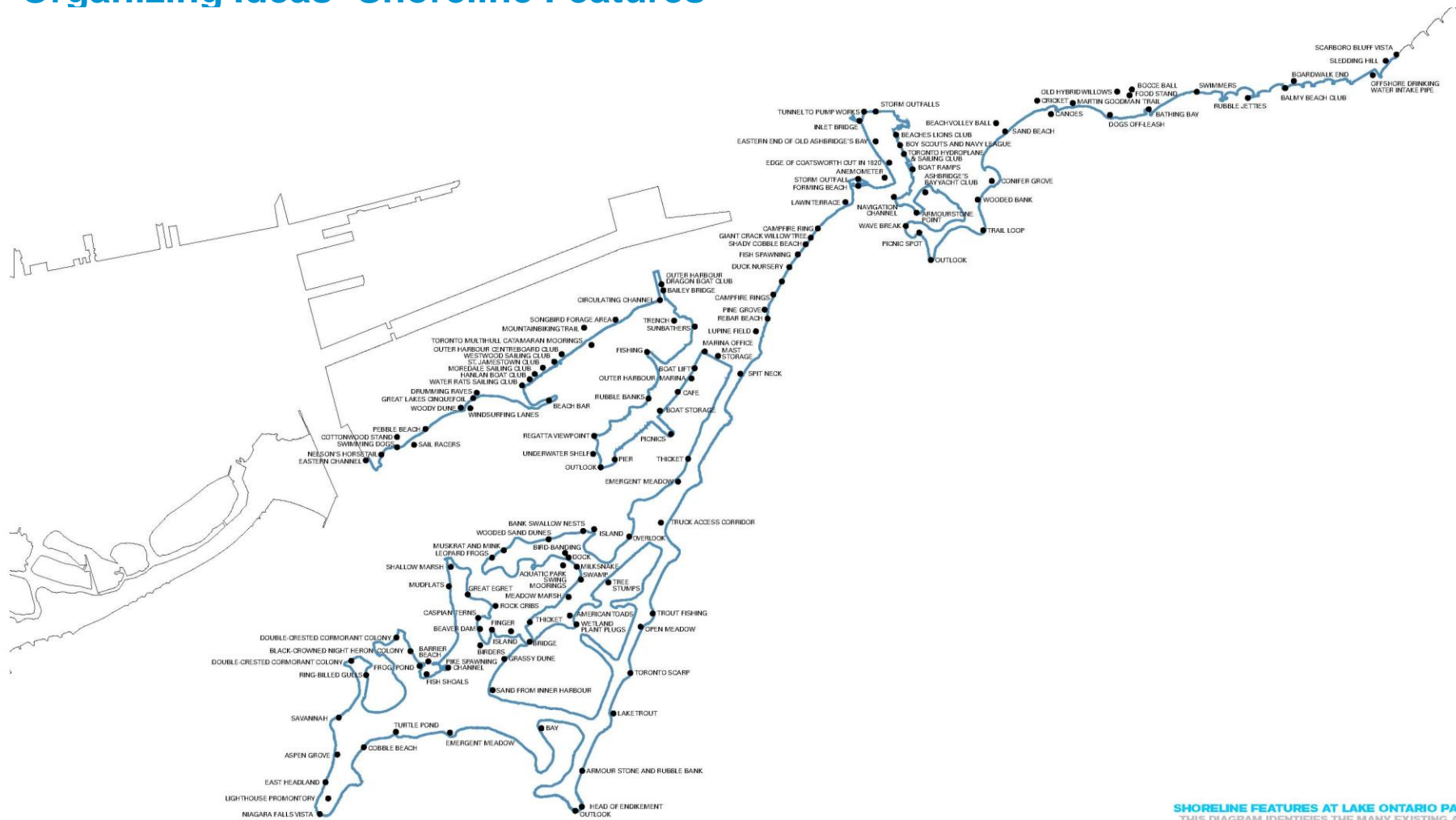
Lake Ontario Park Master Plan: Organizing Ideas: Continuous Green Network



* CURRENT WATERFRONT TORONTO PROJECTS IN DEVELOPMENT BY OTHERS.
GRAPHIC PROVIDED FOR ILLUSTRATIVE PURPOSES ONLY AND ARE SUBJECT TO CHANGE.

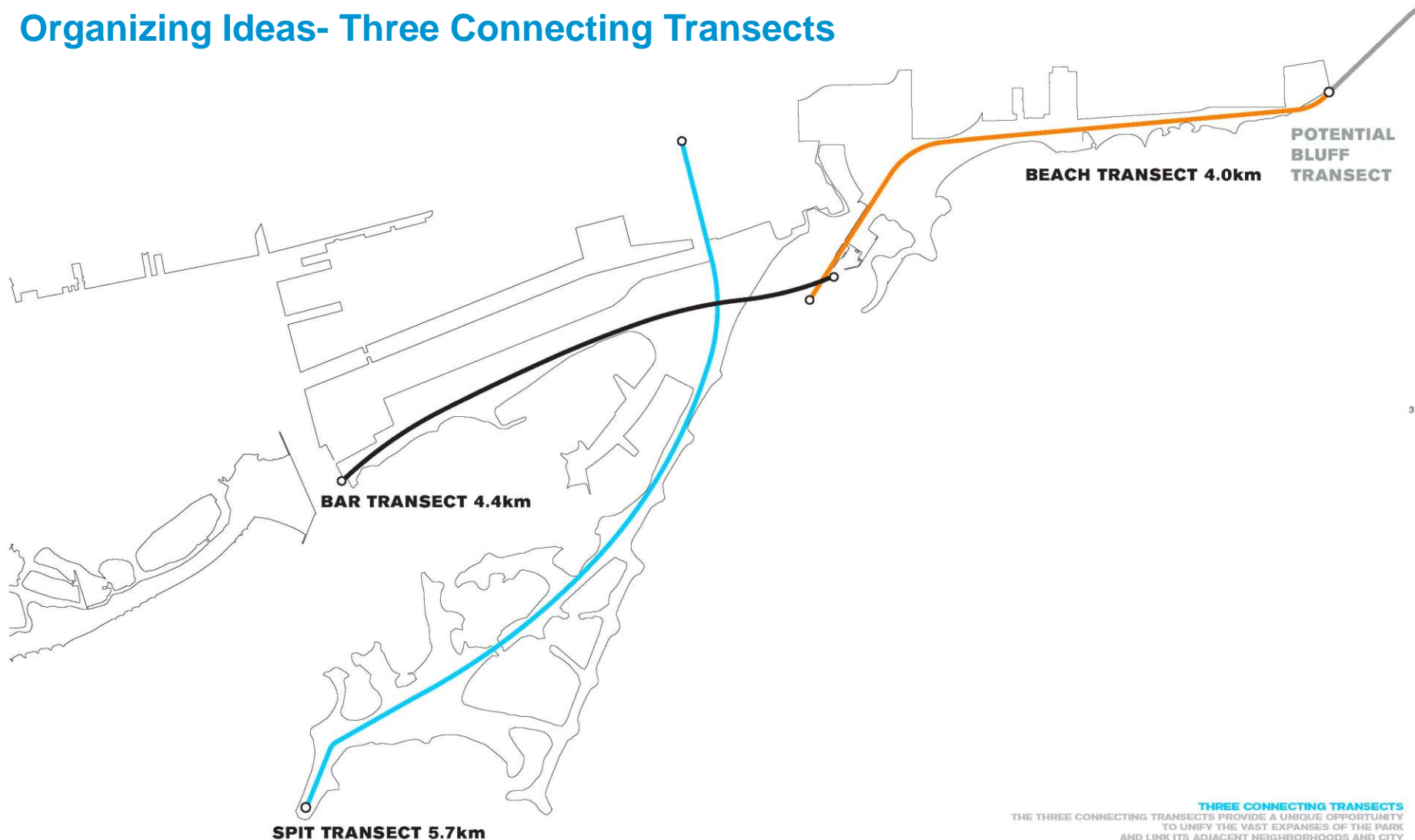
A CONTINUOUS GREEN NETWORK
LAKE ONTARIO PARK IS A GREEN 'CONNECTOR':
LINKING THE DON RIVER GREENWAY TO TOMMY THOMPSON PARK
VIA THE BAR AND THE BASE LANDS

Lake Ontario Park Master Plan: Organizing Ideas- Shoreline Features



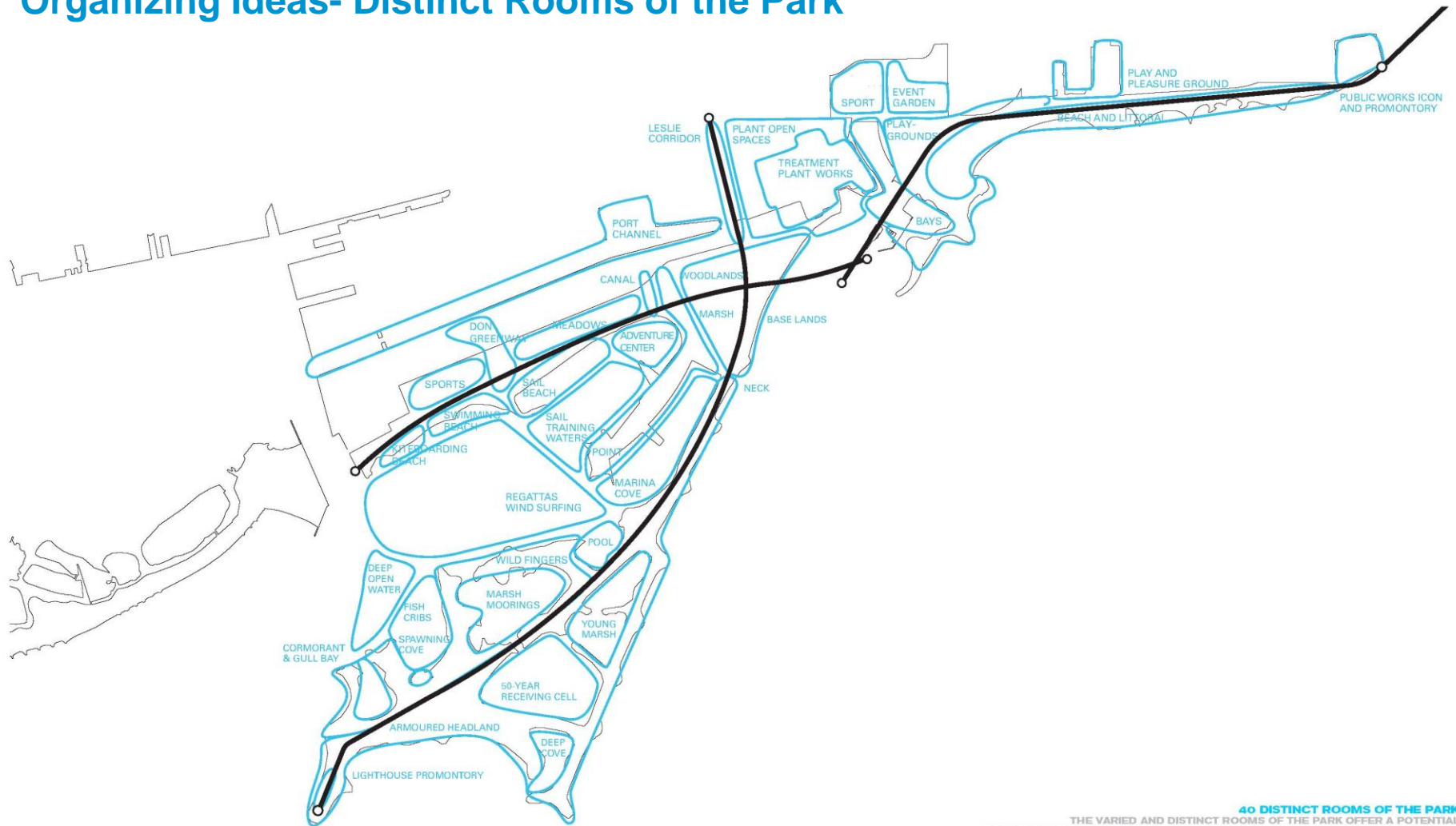
SHORELINE FEATURES AT LAKE ONTARIO PARK
THIS DIAGRAM IDENTIFIES THE MANY EXISTING AND POTENTIAL FEATURES THAT MIGHT BE FOUND ALONG THE EXTENSIVE EDGES OF LAKE ONTARIO PARK

Lake Ontario Park Master Plan: Organizing Ideas- Three Connecting Transects



THREE CONNECTING TRANSECTS
THE THREE CONNECTING TRANSECTS PROVIDE A UNIQUE OPPORTUNITY
TO UNIFY THE VAST EXPANSES OF THE PARK
AND LINK ITS ADJACENT NEIGHBORHOODS AND CITY

Lake Ontario Park Master Plan: Organizing Ideas- Distinct Rooms of the Park



40 DISTINCT ROOMS OF THE PARK
THE VARIED AND DISTINCT ROOMS OF THE PARK OFFER A POTENTIAL FOR DRASTICALLY DIFFERENTIATED LANDSCAPE EXPERIENCES AND OPPORTUNITIES

Lake Ontario Park Master Plan: Organizing Ideas- Park Outposts



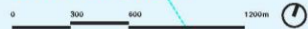
PARK OUTPOSTS
THE NEW, RENOVATED, AND EXISTING OUTPOSTS CAPTURE THE DISTINCT AND DIVERSE CHARACTER OF THE PARK; PROVIDING AN ASSEMBLY OF THE PARKS' NODES, POINTS, LOOKOUTS, PICNIC AREAS, PLAYGROUNDS, BEACHES, FIELDS, MEADOWS, PROMONTORIES, AND WATER LANDINGS INTO A UNIFIED PARK EXPERIENCE

Lake Ontario Park Master Plan:



- THE BAR**
- 01 EASTERN GAP TAXI LANDING AND PROMONTORY
- 02 OFF-LEASH DOG AREA
- 03 CHERRY ST. GATEWAY
- 04 FIRST BAYTONS SITE
- 05 DONN GREENWAY
- 06 TRANSITION SPORTS FIELDS
- 07 CRICKET PITCH
- 08 JUNIOR SPORTS FIELDS
- 09 FLEXIBLE OPEN FIELD
- 10 DONN GREENWAY PROMONTORY
- 11 CHERRY BEACH (SWIMMING BEACH)
- 12 SAL AND WINDSURF CLUBS
- 13 OUTER HARBOUR SAILING FEDERATION (OHSF)
- 14 PUBLIC BEACH FRONT
- 15 HEARST
- 16 PORTLANDS ENERGY CENTRE
- 17 ALLOTMENT GARDENS
- THE MARINA PENINSULA**
- 18 ADVENTURE CENTRE
- 19 HANLAN BOAT CLUB (RELOCATED)
- 20 OUTER HARBOUR PROMENADE & LANDINGS
- 21 OUTER HARBOUR MARINA
- 22 BOAT STAGING AND STORAGE FIELDS
- 23 PUBLIC BOAT LAUNCH RAMPS (RELOCATED)
- 24 TORONTO HYDROPLANE (RELOCATED)
- 25 RESTAURANTS / CAFES
- 26 PUBLIC FISHING PIERS AND PROMONTORIES
- THE SPIT**
- 27 EMBAYMENT A
- 28 EMBAYMENT B
- 29 EMBAYMENT C
- 30 EMBAYMENT D
- 31 AQUATIC PARK SAILING CLUB
- 32 ENVIRONMENTAL SHELTER
- 33 ECOLOGICAL RESEARCH STATION
- 34 CELL 1
- 35 CELL 2
- 36 CELL 3
- 37 EAST COVE
- 38 LIGHTHOUSE PROMONTORY
- THE BASE LANDS**
- 39 WETLAND WATERWAY
- 40 BOARDWALK (LONG-TERM)
- 41 RIDGE & TROUGH FOREST
- 42 MARSH & OPEN WATER
- 43 UPLAND FOREST
- 44 SWAMP FOREST
- 45 TOMMY THOMPSON PARK GATEWAY
- THE BAY**
- 46 BAR TRANSECT OUTLOOK
- 47 ASHERIDGE'S BAY INLET
- 48 ABYC SAILING SCHOOL AND DINGHY AREA
- 49 NAVY LEAGUE (RELOCATED)
- 50 ASHERIDGE'S BAY YACHT CLUB (ABYC)
- 51 BALMY BEACH CANOE CLUB (RELOCATED)
- 52 PROTECTED, CALM WATERWAY
- 53 BRIDGE AND BREAKWATER
- 54 PISCINE PROMONTORY
- 55 WATER TREATMENT WETLAND
- 56 ENTRY DRIVE AND PARKING
- 57 BEACHES LIONS CLUB
- 58 PICNIC AND WATER PLAY AREA
- 59 NEW BEACHES FORMED BY DEPOSITION
- 60 PUBLIC KAYAK AND CANOE LAUNCH
- 61 BEACH VOLLEYBALL
- 62 BMX FACILITY SKATEBOARD PARK
- THE EASTERN BEACHES**
- 63 BEACH TRANSECT BOARDWALK
- 64 R. G. HARRIS PIER
- 65 POTENTIAL BLUFF TRANSECT CONNECTION
- 66 SILVER BIRCH RECREATION PIER
- 67 OLLEN MANOR RECREATION PIER
- 68 BALMY BEACH CLUB HOUSE
- 69 KEW - BALMY BEACH (SWIMMING BEACH)
- 70 MARTIN GOODMAN TRAIL
- 71 OFF-LEASH DOG AREA
- 72 FLOWERING MEADOW (NUTRIENT TRAPS)
- 73 KEW GARDENS
- 74 RUNNING TRACK & MULTI-USE FIELD
- 75 WOODBINE BEACH (SWIMMING BEACH)

lake ontario park
master plan

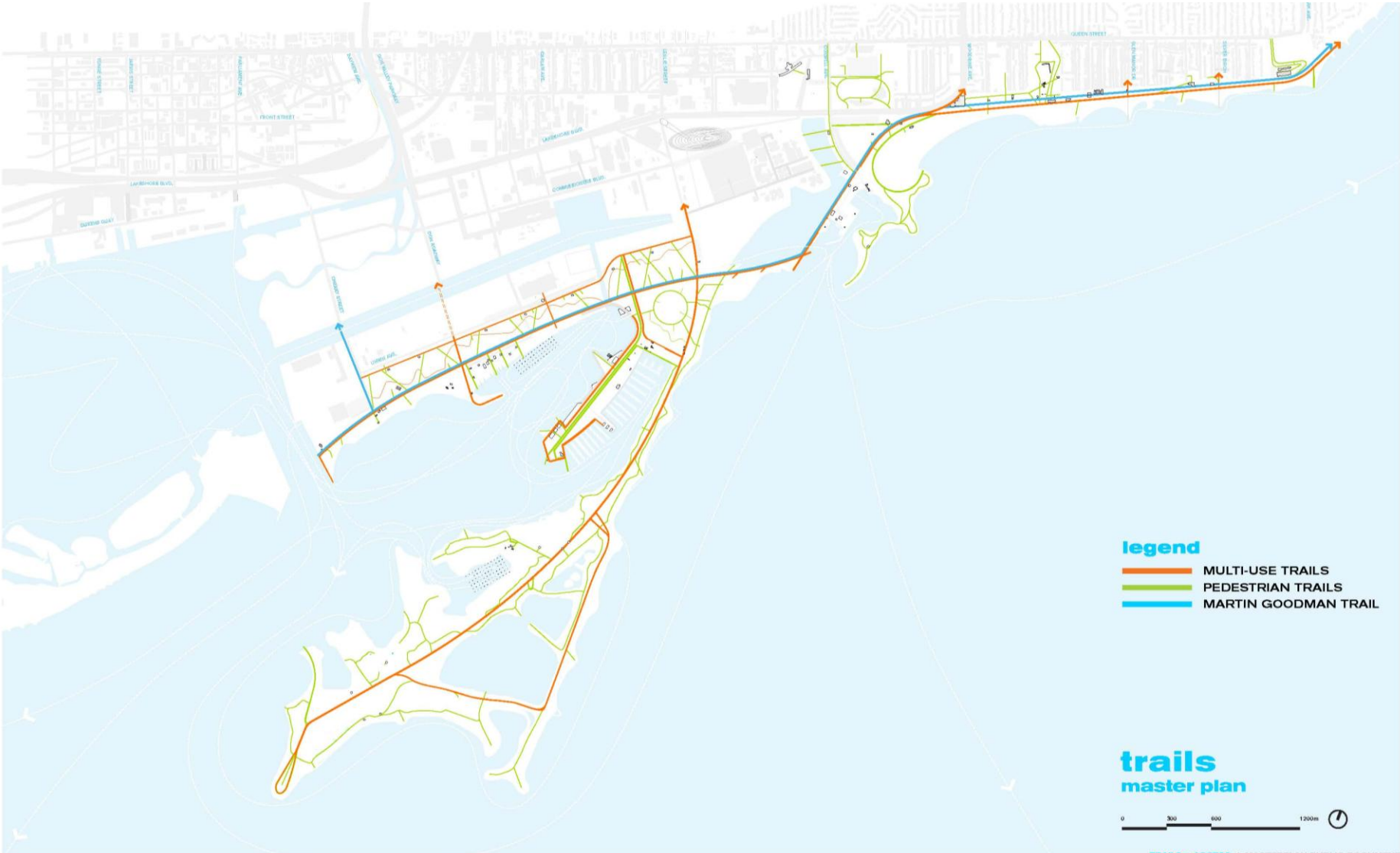


Lake Ontario Park Master Plan:



Lake Ontario Park Master Plan

Trail connections

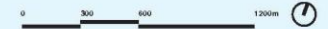


Lake Ontario Park Master Plan

Habitat & Natural Areas



* CURRENT WATERFRONT TORONTO PROJECTS IN DEVELOPMENT BY OTHERS.
 GRAPHIC PROVIDED FOR ILLUSTRATIVE PURPOSES ONLY AND ARE SUBJECT TO CHANGE.

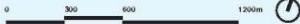


Lake Ontario Park Master Plan Proposed Canopy Cover



- legend**
- EXISTING CANOPY
 - PROPOSED CANOPY

canopy cover master plan



SOURCE: EXISTING CANOPY DERIVED FROM TRACING AN OVERLAY WITH CURRENT AERIAL PHOTOGRAPHS. TREE LOCATIONS AND MASSINGS ARE APPROXIMATE.

Lake Ontario Park Master Plan

Areas of the Park



areas of the park
master plan

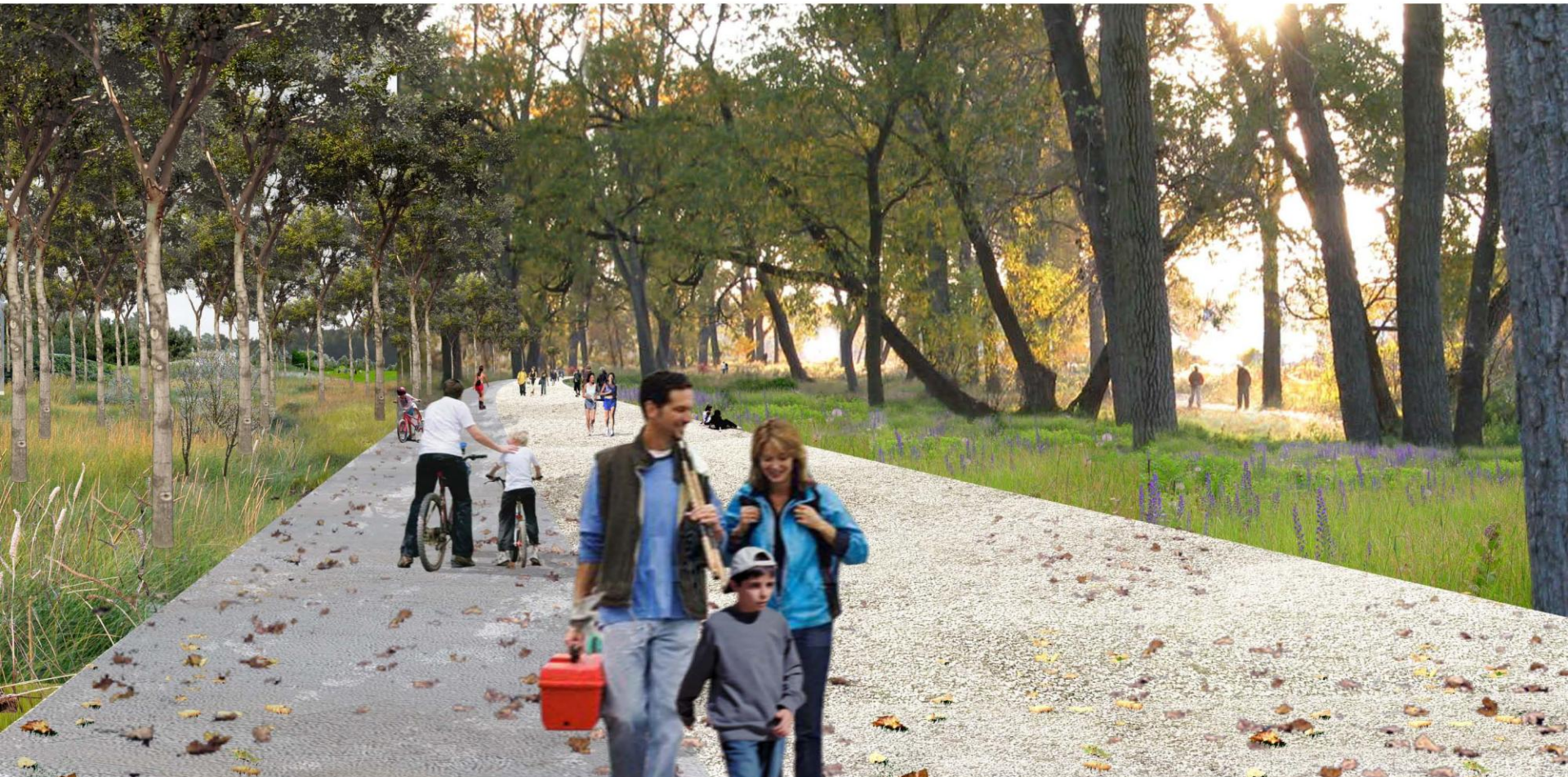


Bar landscape (Capping landforms)



WINTER RECREATION IN THE BAR
THE BAR LANDSCAPE OFFERS UNIQUE OPPORTUNITIES
FOR ACTIVE PLAY IN AN UNUSUAL SETTING THROUGHOUT THE YEAR

The Transect (North of Cherry Beach- at Existing Cottonwoods)



PRIORITIZING CONNECTIVITY
THE EARLY IMPLEMENTATION OF THE TRANSECTS IS AN ACHIEVABLE
AND COMPELLING MEANS TO GENERATE BROAD-BASED ENTHUSIASM AND
PROVIDE ACCESS AND CIRCULATION THROUGH THE SITE

Marina Peninsula (View across Outer Harbour)



VIEW OF THE WATERFRONT PROMENADE
THE MARINA PENINSULA OFFERS ACCESS TO A RANGE OF WATERFRONT RECREATION OPPORTUNITIES, INCLUDING CANOEING, KAYAKING, SAILING, WATERFRONT PICNICKING, STROLLING, JOGGING, SWIMMING, AND ENJOYING NUMEROUS OUTLOOKS AND VISTAS

The Base lands



AN URBAN WILDERNESS
IN PROMOTING THE SLOW, DELICATE INTRODUCTION OF TRAILS
AND HABITAT ENHANCEMENTS, THE MASTER PLAN HOPES TO CULTIVATE
THE EXISTING CHARACTER OF 'WILDERNESS' IN THE BASE LANDS

The Spit



VIEW OF THE WILDERNESS REFUGE IN TOMMY THOMPSON PARK
THE "URBAN WILDERNESS" FOUND IN TTP IS AN EXTRAORDINARY ASSET FOR LAKE ONTARIO PARK, AND THE LARGER TORONTO REGION; OFFERING POTENTIAL FOR HABITAT REJUVINATION AND ENHANCEMENT WHILE PROVIDING UNIQUE OUTDOOR RECREATION OPPORTUNITIES

The Eastern Beaches

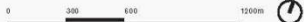


VIEW OF THE 'REFRESHED' EASTERN BEACHES & BOARDWALK
THE MASTER PLAN VALUES THE EXISTING CHARACTER OF THE EASTERN BEACHES AND SIMPLY PROMOTES THE RENOVATION OF ITS AMENITIES TO PRESERVE ITS UNIQUE AND CHERISHED CHARACTER IN PERPETUITY

Lake Ontario Park Master Plan Proposed Phase 1



areas of the park
master plan



Lake Ontario Park Master Plan

Proposed Phase 1 : Bar Landscape



Lake Ontario Park Master Plan

Phase 1 Bar Landscape (Capping Landform)

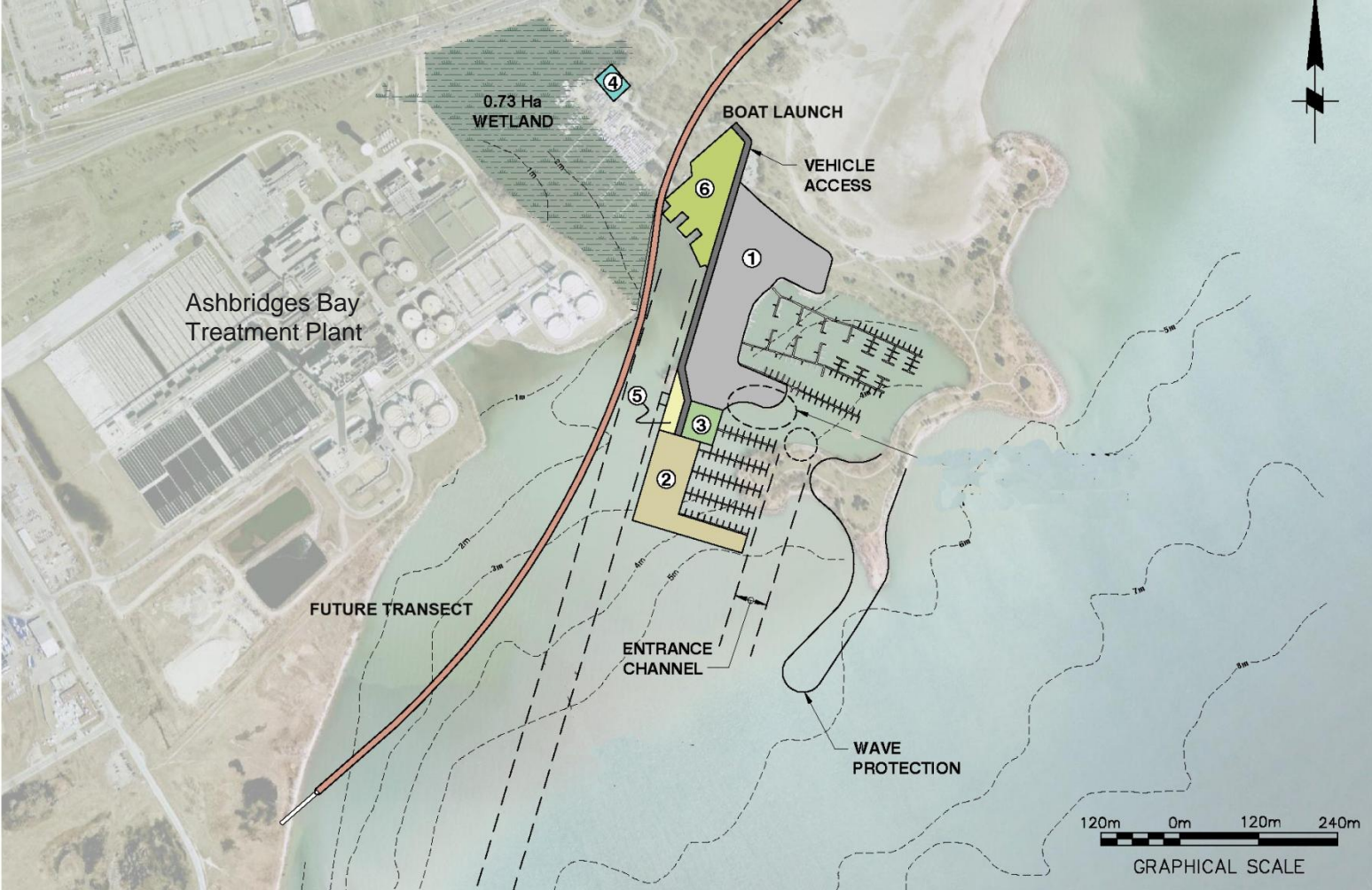
- **WT soil management strategy requires a depository for soil coming out of WT soil management facility.**
- **The proposed bar landscape can accommodate approximately 600,000 cubic meters of soil from WDL and EBF. The estimated total cost to dig and dump this material, not re-use, and to bring in new fill to LOP would be in the range of \$90-125 million.**
- **The logical choice/strategy is the incremental construction of the bar landscape through placement of this material, after treating it at the soil treatment facility in the Port Lands.**
- **Funding of \$ 2 million is required now to allow for the development of the plans/studies.**

Lake Ontario Park Master Plan

Proposed Phase 1 : Bay Area

Existing Conditions





LEGEND

- | | | | | | |
|---|---|--|--|--|---------------------------------------|
| <p>① ASHBRIDGE'S BAY YACHT CLUB (ABYC)
(34,500 SQ.M.)
(ADDITIONAL 140 SLIPS)</p> | <p>② TORONTO HYDROPLANE & SAILING CLUB (THSC)
(11,200 SQ.M.)
(140 SLIPS)</p> | <p>③ NAVY LEAGUE
(2,700 SQ.M.)
(32 SLIPS)</p> | <p>④ BEACHES LIONS CLUB (BLC)
(1,700 SQ.M.)</p> | <p>⑤ BALMY BEACH CANOE CLUB (BBCC)
(1,700 SQ.M.)
(2 KAYAK LAUNCHES)</p> | <p>⑥ PARKING AND BOAT RAMP</p> |
|---|---|--|--|--|---------------------------------------|



LEGEND

- ①** ASHBRIDGE'S BAY YACHT CLUB (ABYC) (34,500 SQ.M.) (ADDITIONAL 140 SLIPS)
- ②** TORONTO HYDROPLANE & SAILING CLUB (THSC) (11,200 SQ.M.) (140 SLIPS)
- ③** NAVY LEAGUE (2,700 SQ.M.) (32 SLIPS)
- ④** BEACHES LIONS CLUB (BLC) (1,700 SQ.M.)
- ⑤** BALMY BEACH CANOE CLUB (BBCC) (1,700 SQ.M.) (2 KAYAK LAUNCHES)
- ⑥** PARKING AND BOAT RAMP



Lake Ontario Park Master Plan, Phase 1 Projected costs:

1. Bay Area (Wave Protection landform/boat clubs): **\$9.0 million**

Lake Fill w/ dredged material (free of charge), excavation of land area and fill, placement of armour stone, finished material, planting.

(Includes design fees, engineering fees, pricing contingencies, construction)

Relocation of boat clubs cost of \$9.0 million, WT proposed amount \$5 million, it is anticipated that TW will contribute \$4.0 million)

2. Bar Landscape:

Design of Bar Topography: \$2.0 million

Design fees, engineering fees for grading, soil/slope stabilization, storm water and drainage plans, planting designs, and phasing strategies. (\$ 1.2 million)

Topographic survey, tree and herbaceous inventories geotechnical, soil investigations/environmental site management. (\$.8 million)

Washroom Facility for Sports Fields/ LOP Phase 1: \$1.0 million

Location to address sports field and Lake Ontario Park requirements



Lake Ontario Park Master Plan

Management is asking for Board approval for:

- 1. Lake Ontario Park Master Plan.**
- 2. Phase 1 proposal.**
- 3. Funding in the amount of \$12 million (currently in LTP) to complete Phase 1.**
- 4. Request Board approval to proceed with Council endorsement.**