



**lake ontario park**

# team

**field operations** New York, New York ▪ landscape architecture and urban design

with

**SCHOLLEN & COMPANY INC.**, Toronto, Ontario ▪ landscape architecture

**KIDD CONSULTING**, Toronto, Ontario ▪ public engagement

**HAMILTON, RABINOVITZ & ALSCHULER**, New York, New York ▪ economic strategy

**NORTH-SOUTH ENVIRONMENTAL**, Campbellville, Ontario ▪ terrestrial and aquatic habitat

**NINA-MARIE LISTER**, Toronto, Ontario ▪ ecology

**CCL/IBI**, Richmond Hill, Ontario ▪ civil and marine engineering

**POULOUS AND CHEUNG**, Markham, Ontario ▪ transportation engineering

**ARCHAEOLOGICAL SERVICES INC.**, Toronto, Ontario ▪ archaeological assessment

**UNTERMAN MCPHAIL ASSOCIATES**, Toronto, Ontario ▪ built and natural heritage



# **14-month project in 4 phases:**

**1 review, synthesis and outreach**

**2 programming and problem solving**

**3 vision, design and visualization**

**4 revision to catalyze implementation**



## **next steps in a public process:**

**June 2006**                      **introduction, ideas and issues**

**November 2006**              **concept plan**

**March 2007**                    **draft master plan**

**June 2007**                      **final master plan**

**early themes**

# LARGE SCALE LANDSCAPE



# SCALE COMPARISON



CENTRAL PARK  
New York, New York

340 hectares/ 840 acres



LAKE ONTARIO PARK  
Toronto, Ontario

390 hectares/ 965 acres

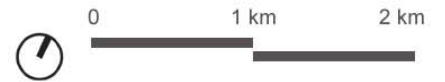
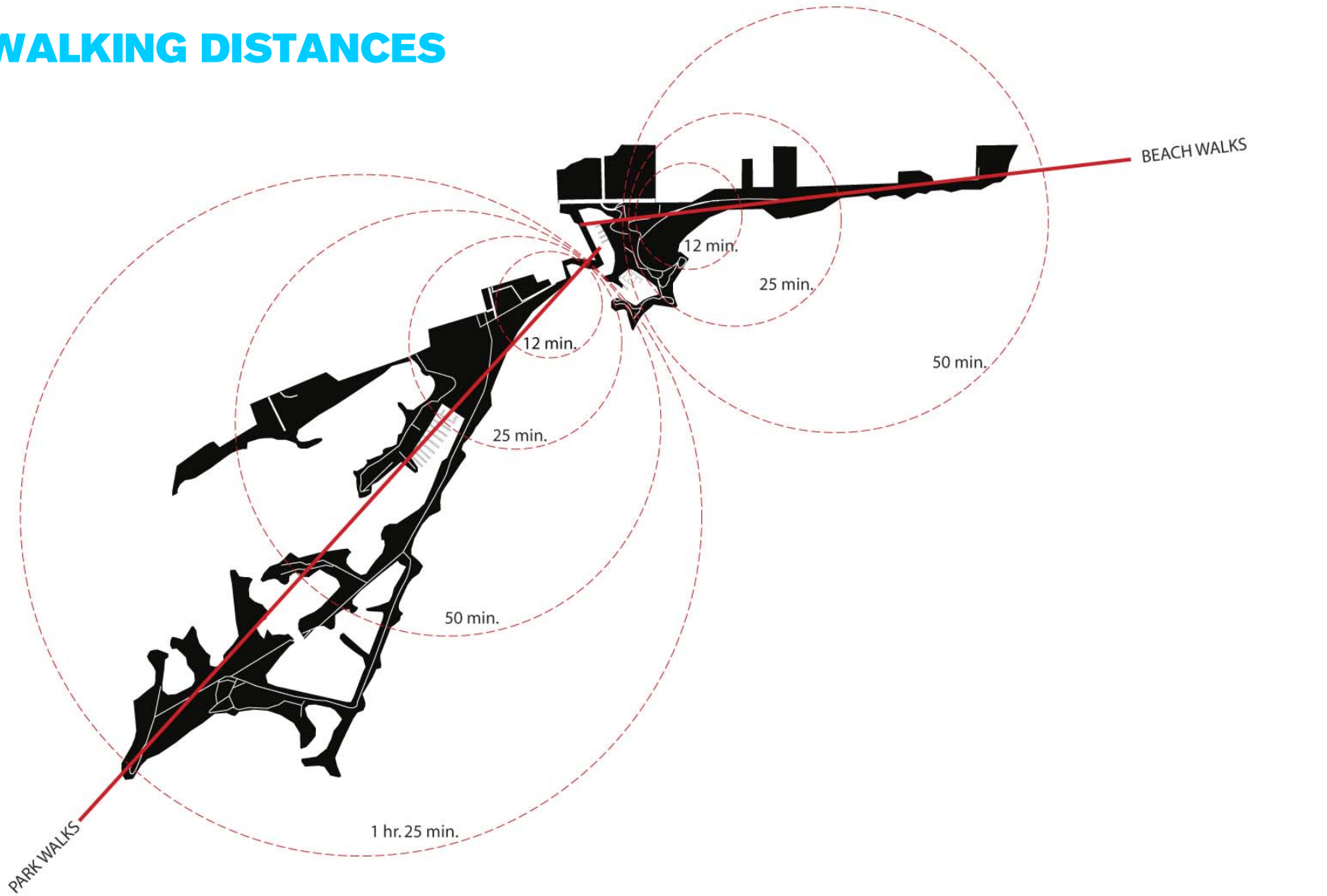


HIGH PARK  
Toronto, Ontario

161 hectares/ 398 acres



# WALKING DISTANCES





## REGIONAL CONNECTIVITY

lake ontario park should match the power of the two ravine park systems and complete the green belt



# UNIFIED ENSEMBLE

reconceptualize distinct parcels to knit together the communities and territories of the waterfront





## **URBAN WILD**

**provide generous wilds and ecological infrastructure for the city, as well as unusual experiences of nature**

# PUNCTUATION

organize the park to support different intensities of activity and coexistence of water sports, art, play, events and nature

design unique features that will coalesce into a world-class park that defines Toronto



## TIME

**ensure both early successes and long-term sustainability with smart phasing and economic planning**



## **THE LAKE**

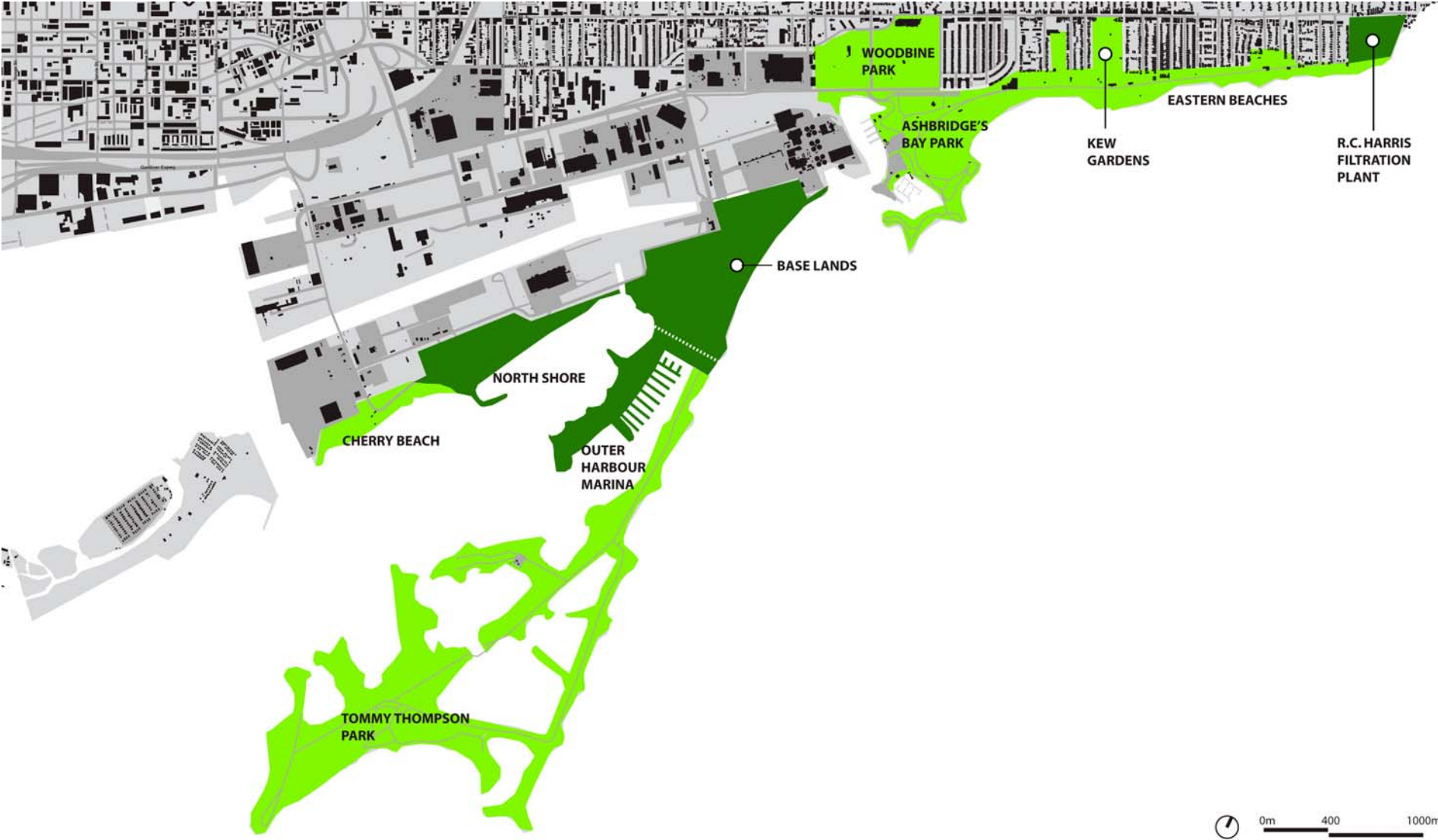
**cultivate and amplify the elemental aspects of lake life  
program the park to support the widest possible range  
of water-oriented recreation**



# site



# existing parks and parkland to be developed

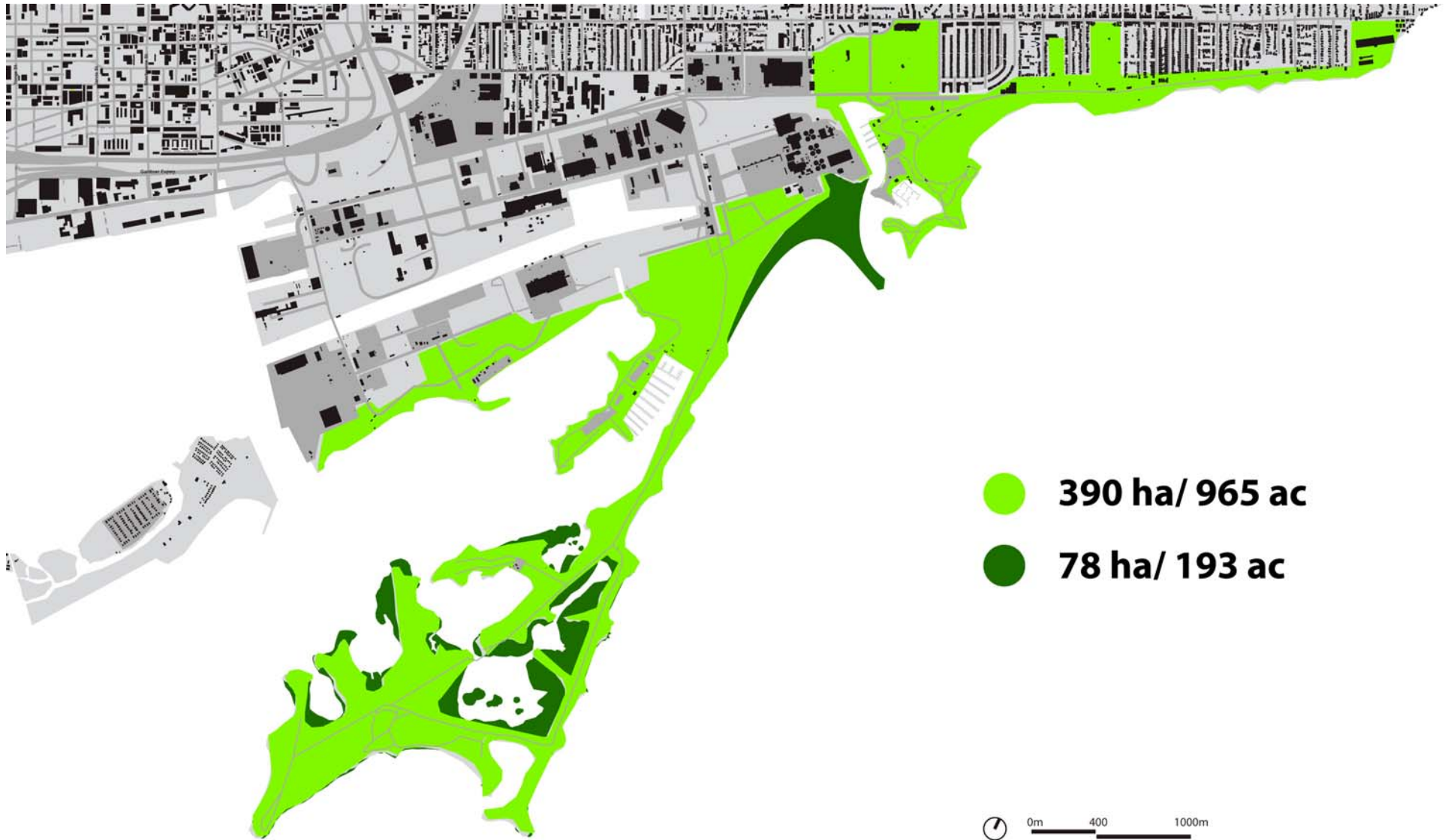




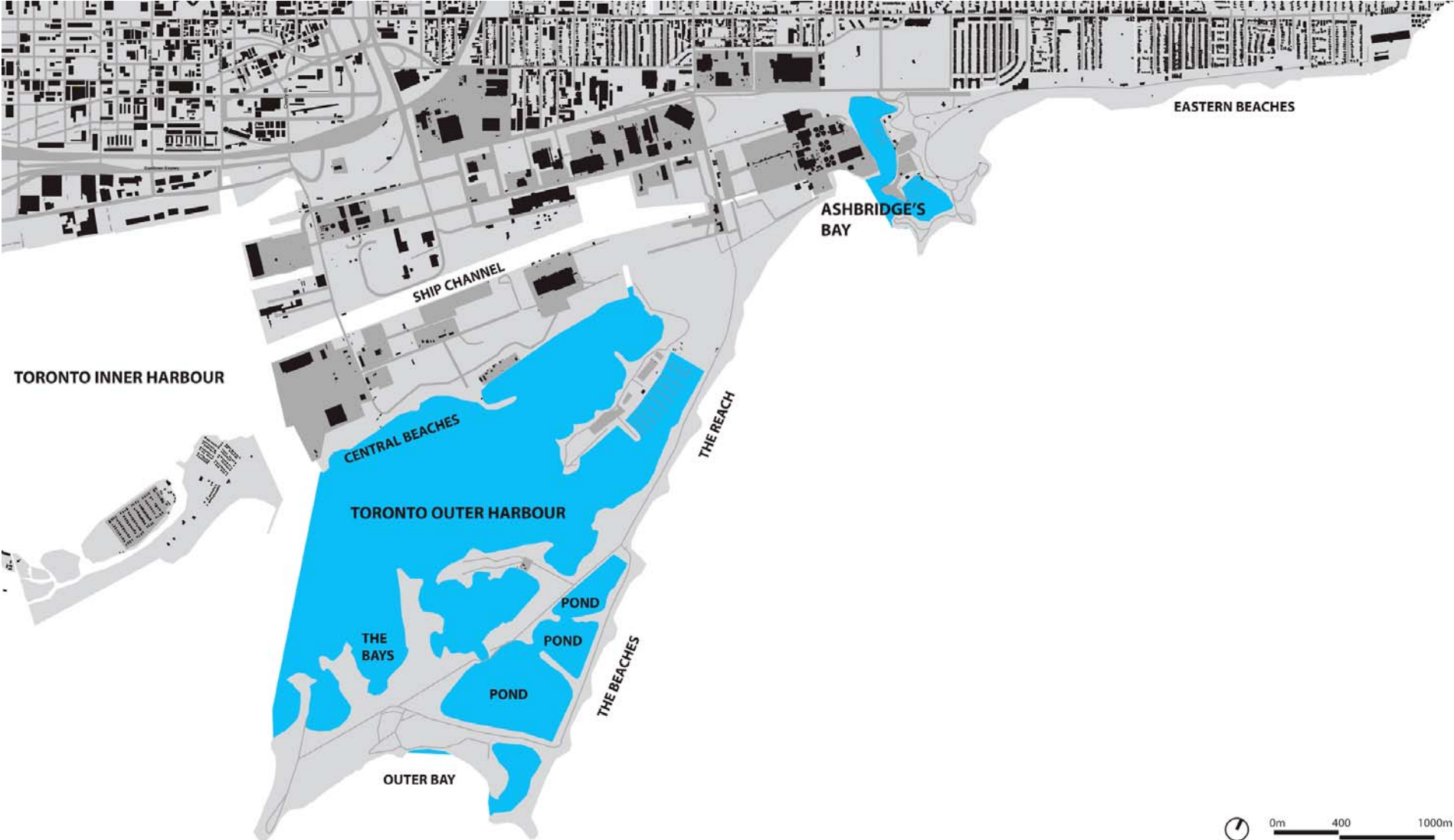
# connectivity



# potential additions to land area



# water bodies of lake ontario park





**toronto islands**

**cherry beach**

**north shore**

**outer harbour  
water park**

**port lands**

**hearn generating plant**

**marina**

**base lands**

**< tommy thompson park**

**leslie street >**



**eastern beaches**

**base lands**

**marina**

**tommy thompson park**



**r c harris filtration plant**  
**eastern beaches**

**woodbine beach**

**ashbridge's bay park**

**treatment plant**

**base lands**

**outer harbour  
water park**

**tommy thompson park >**

**outer harbour marina**

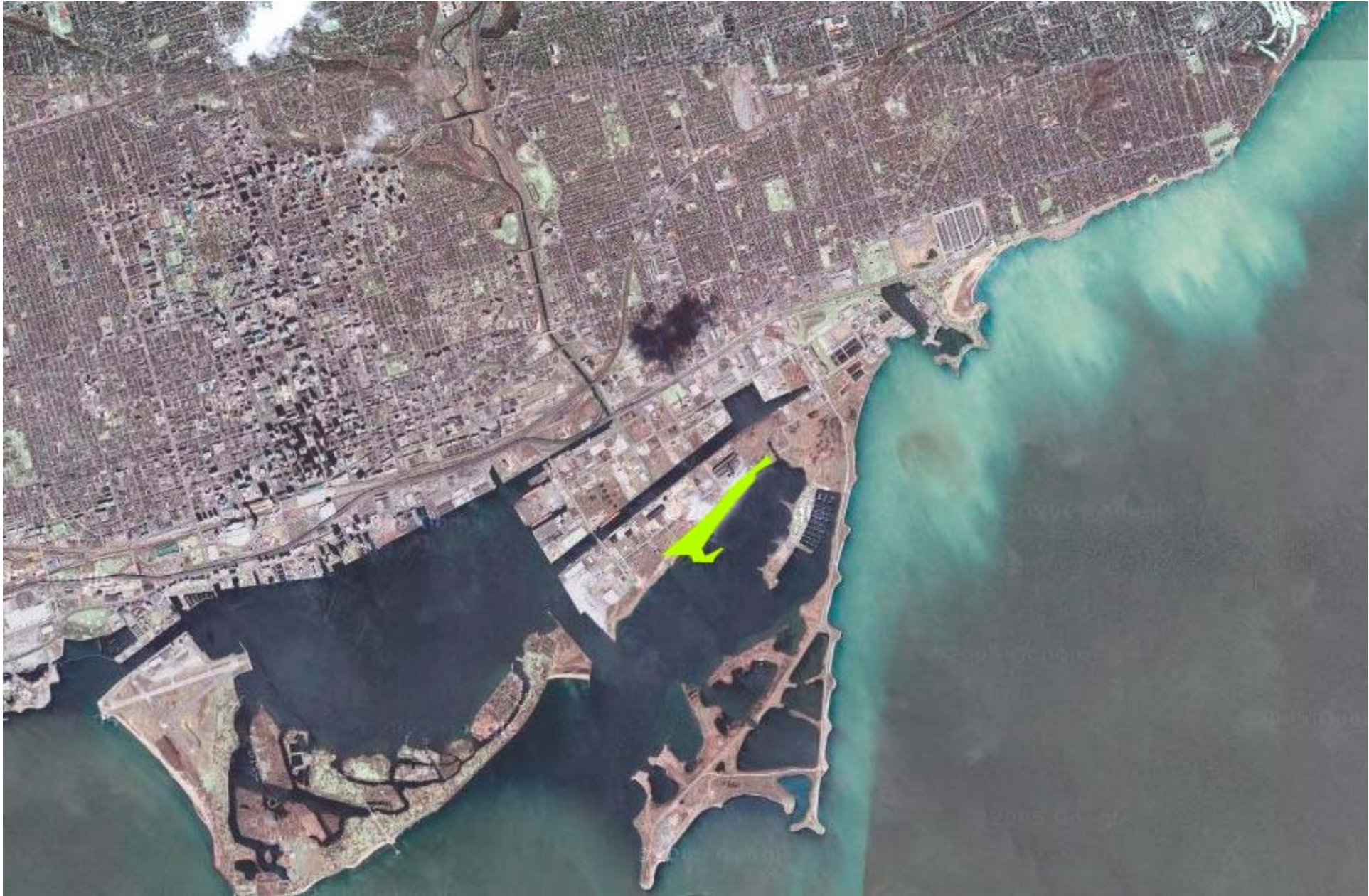


**cherry beach**









**north shore**











**outer harbour water park**









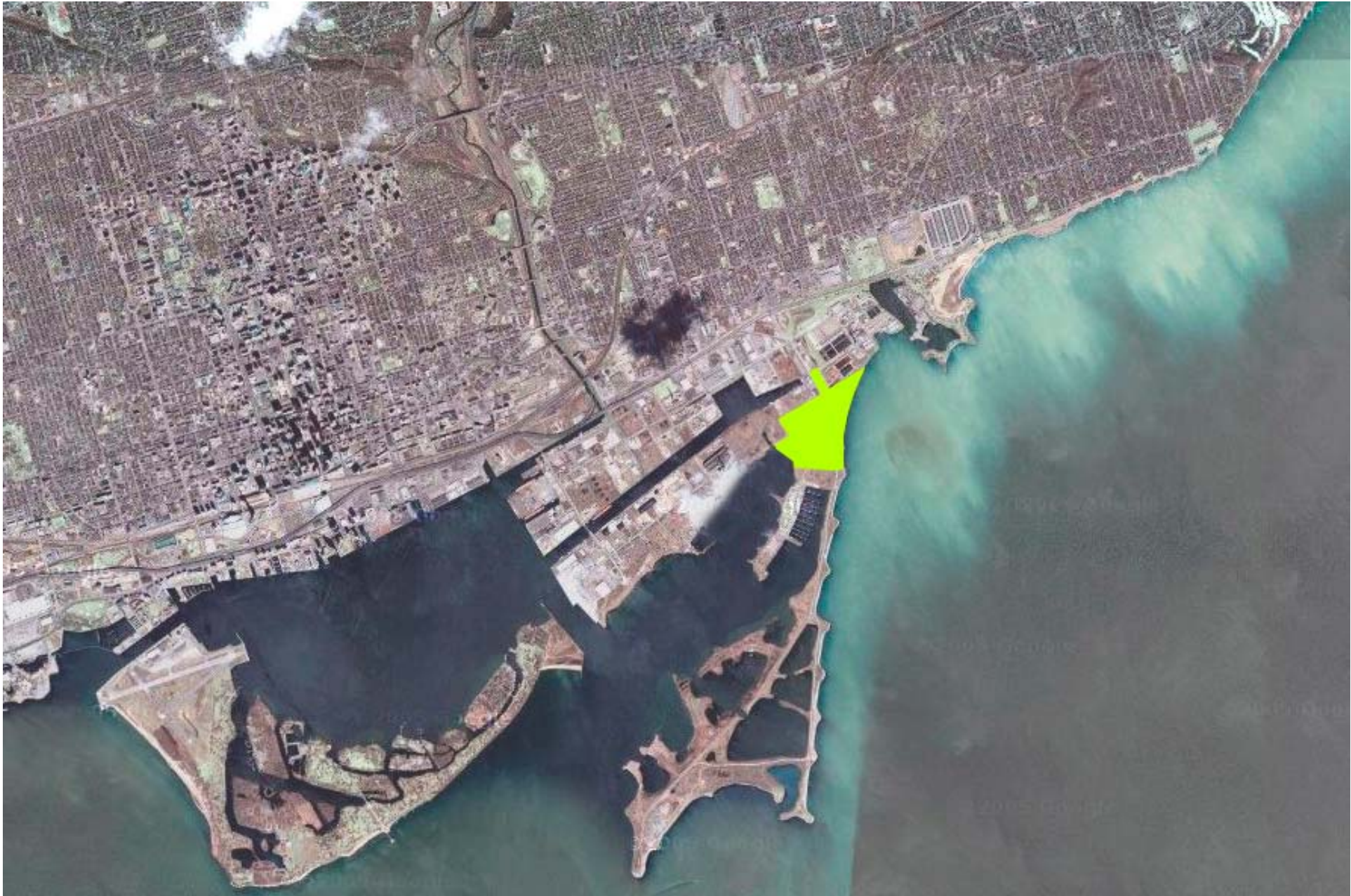


**martin goodman trail**









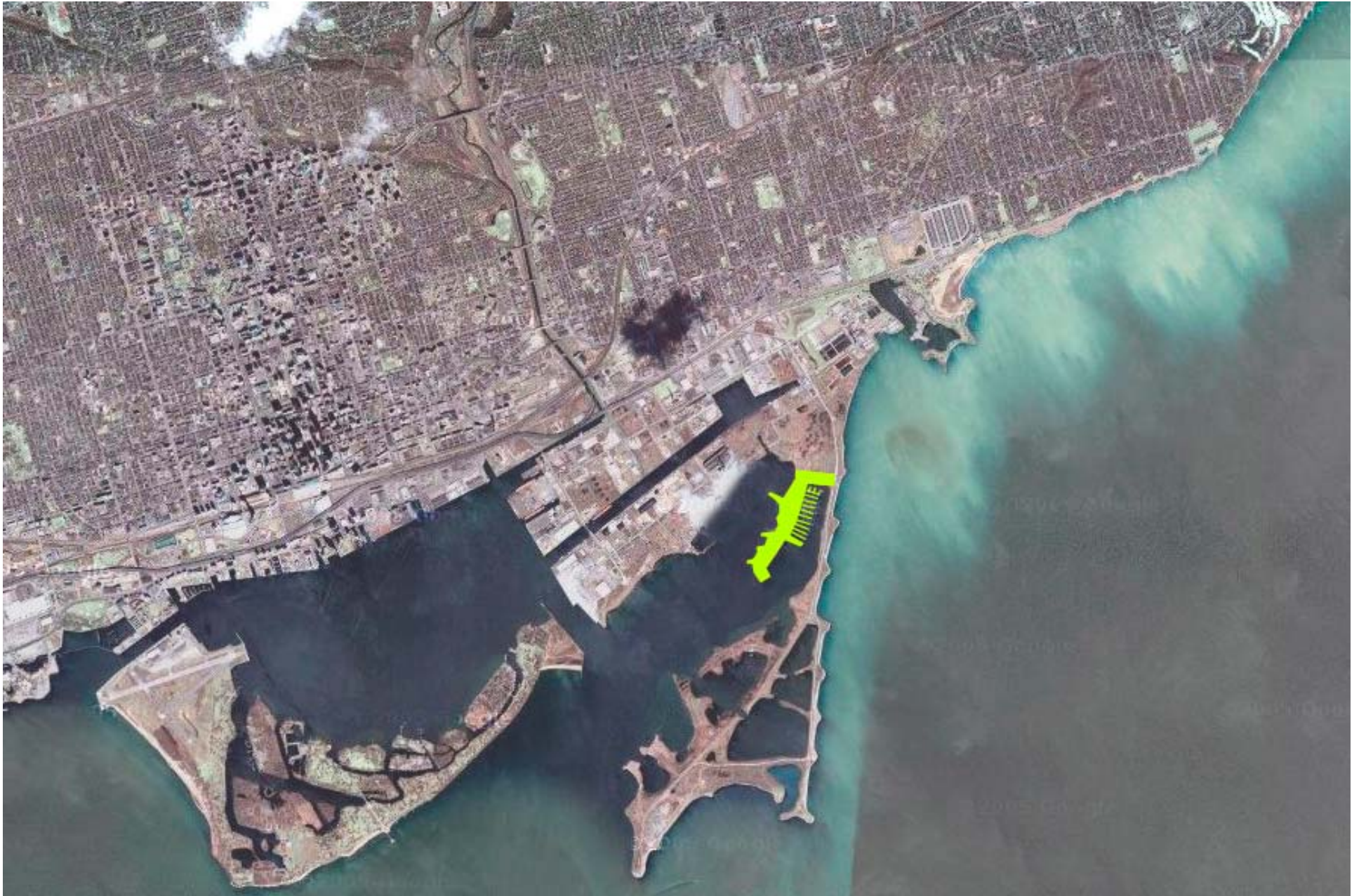
**base lands**











**outer harbour marina**







**tommy thompson park**





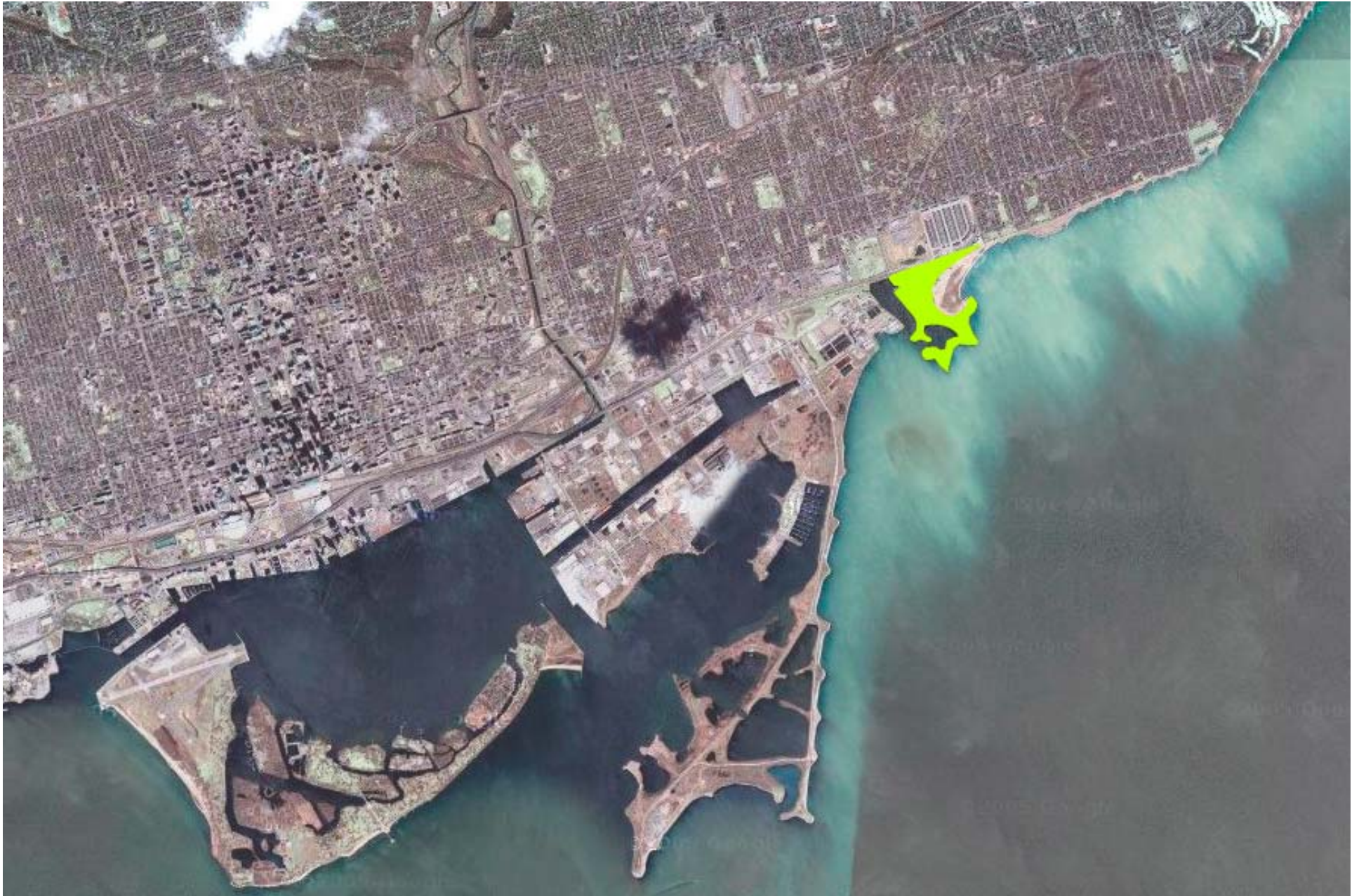






**ashbridge's bay treatment plant**

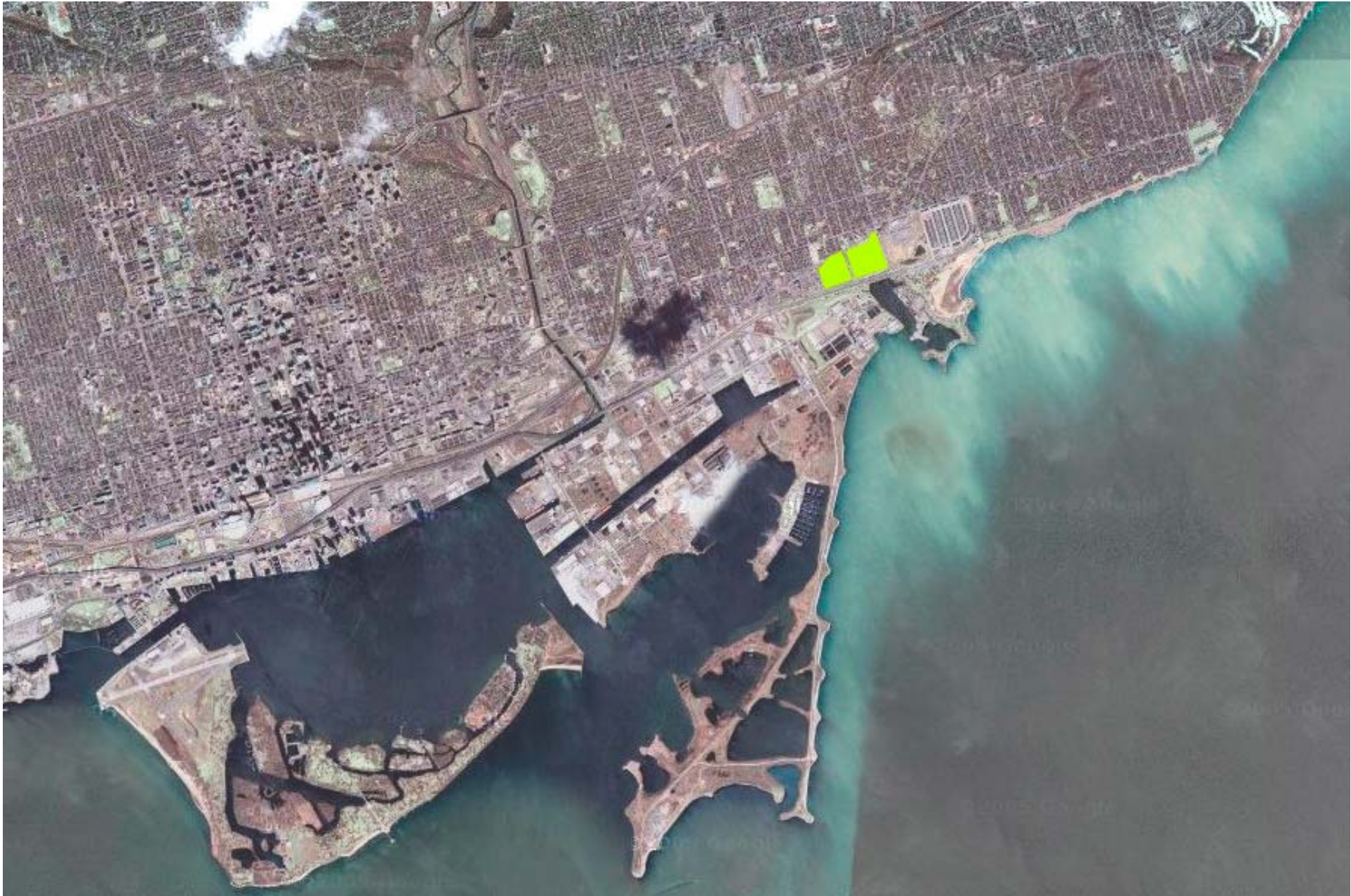




**ashbridge's bay park**







**woodbine park**









**eastern beaches**









**kew gardens**











**r c harris filtration plant**







**four stories**

**remaking the lake**



**CURRENT**



**1959**



**1912**

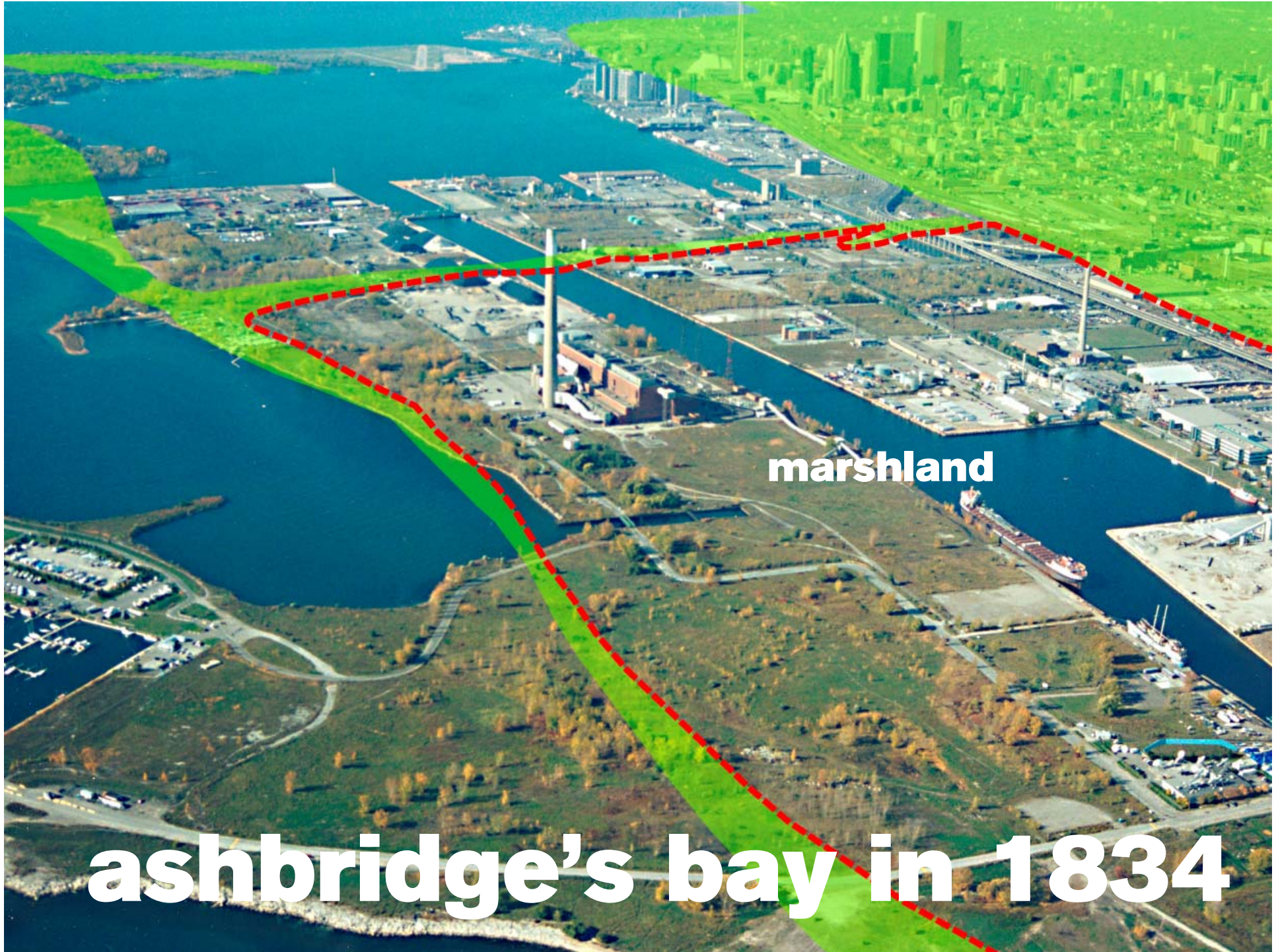


**1886**



**1834**





marshland

ashbridge's bay in 1834

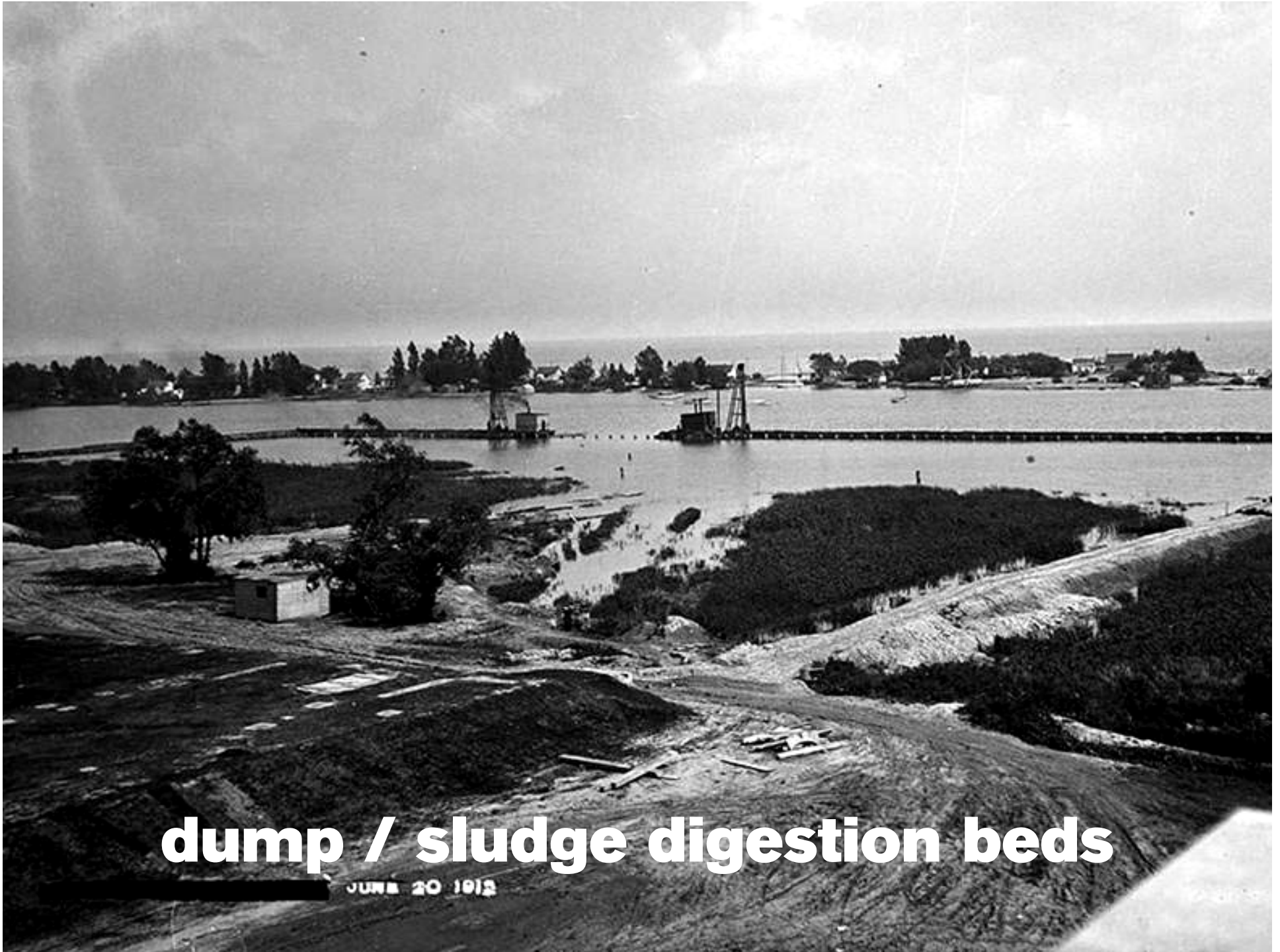




**1,300-acre marsh**

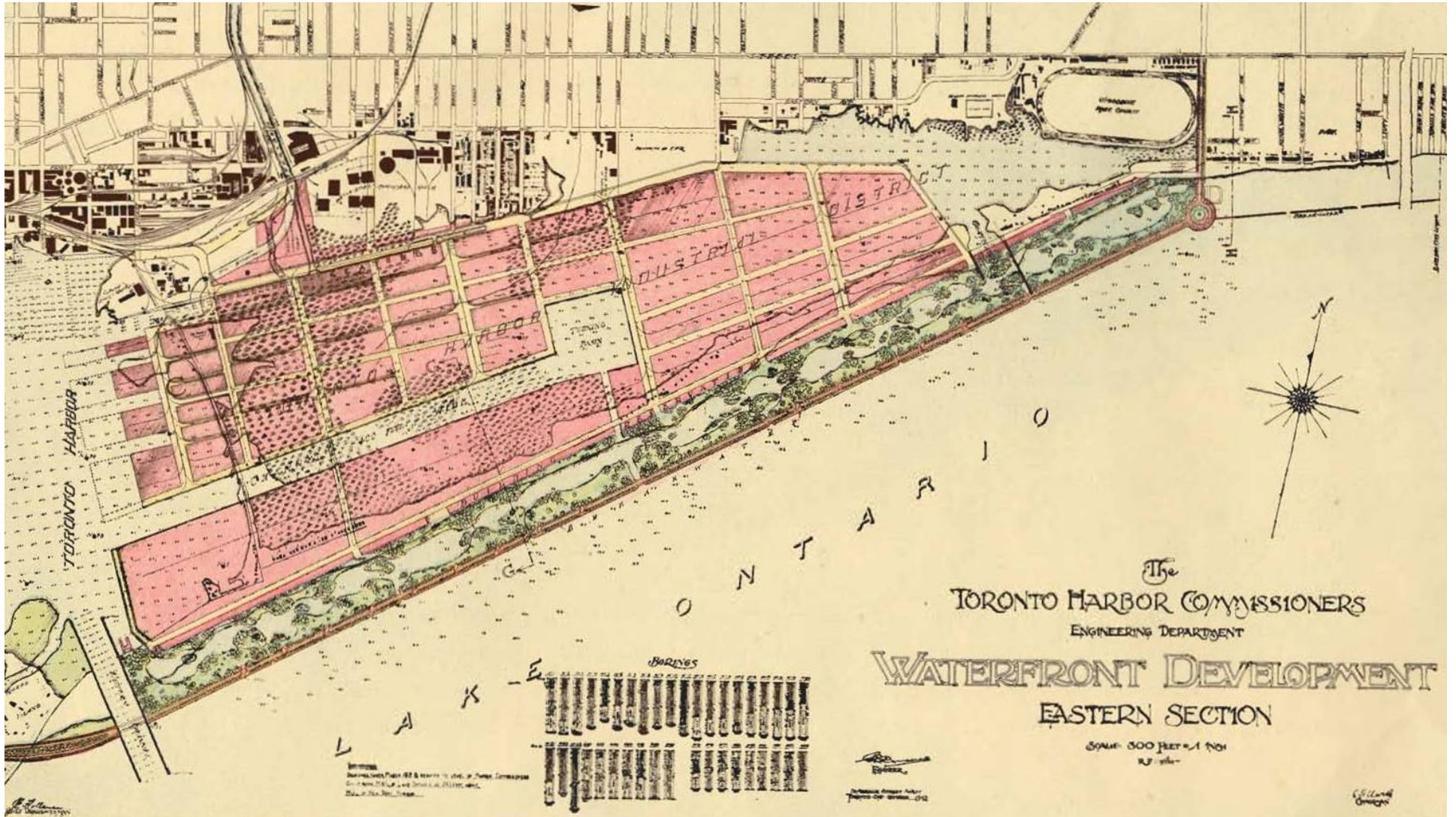


**shifting littoral drift deposits**

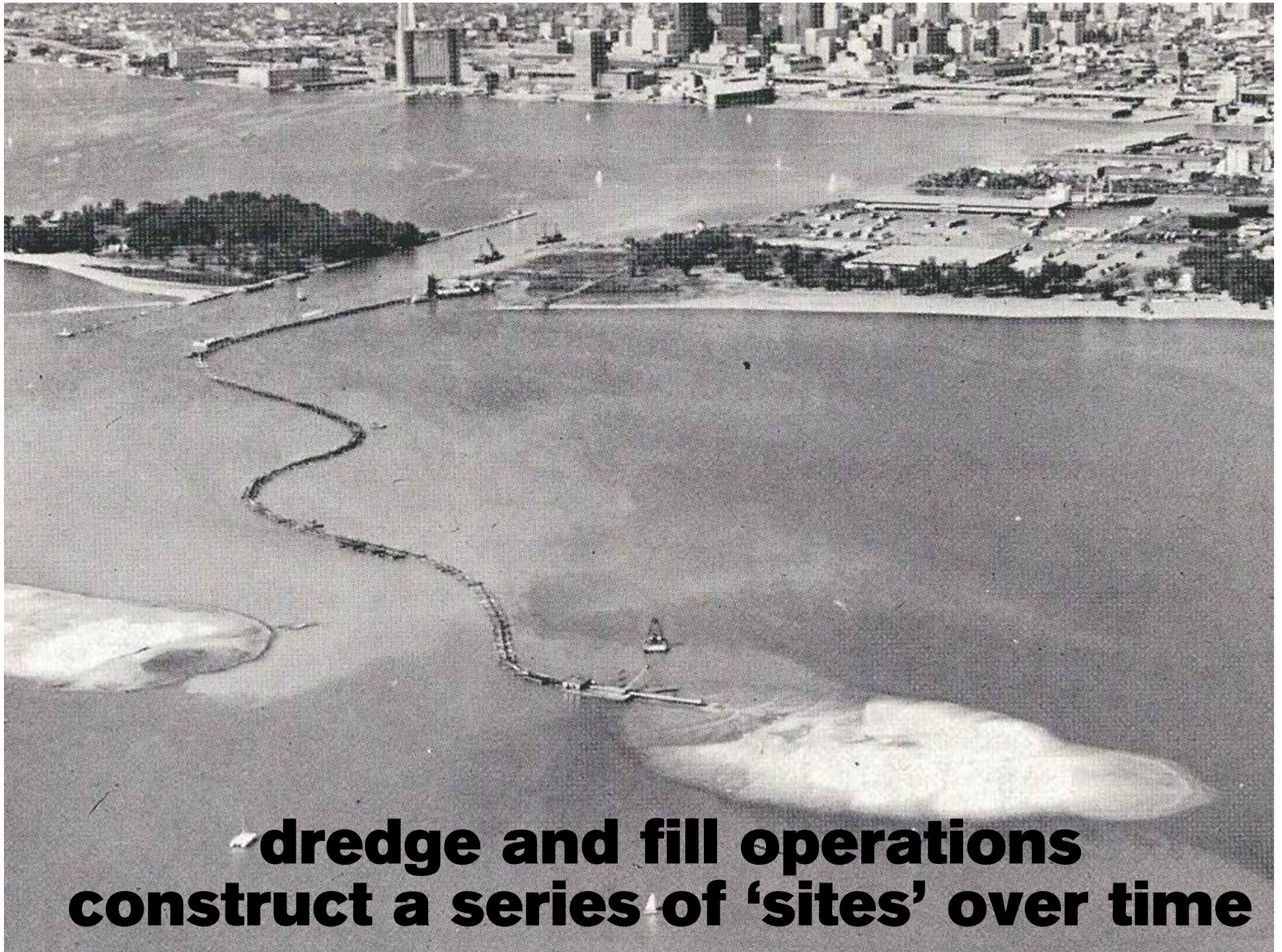


**dump / sludge digestion beds**

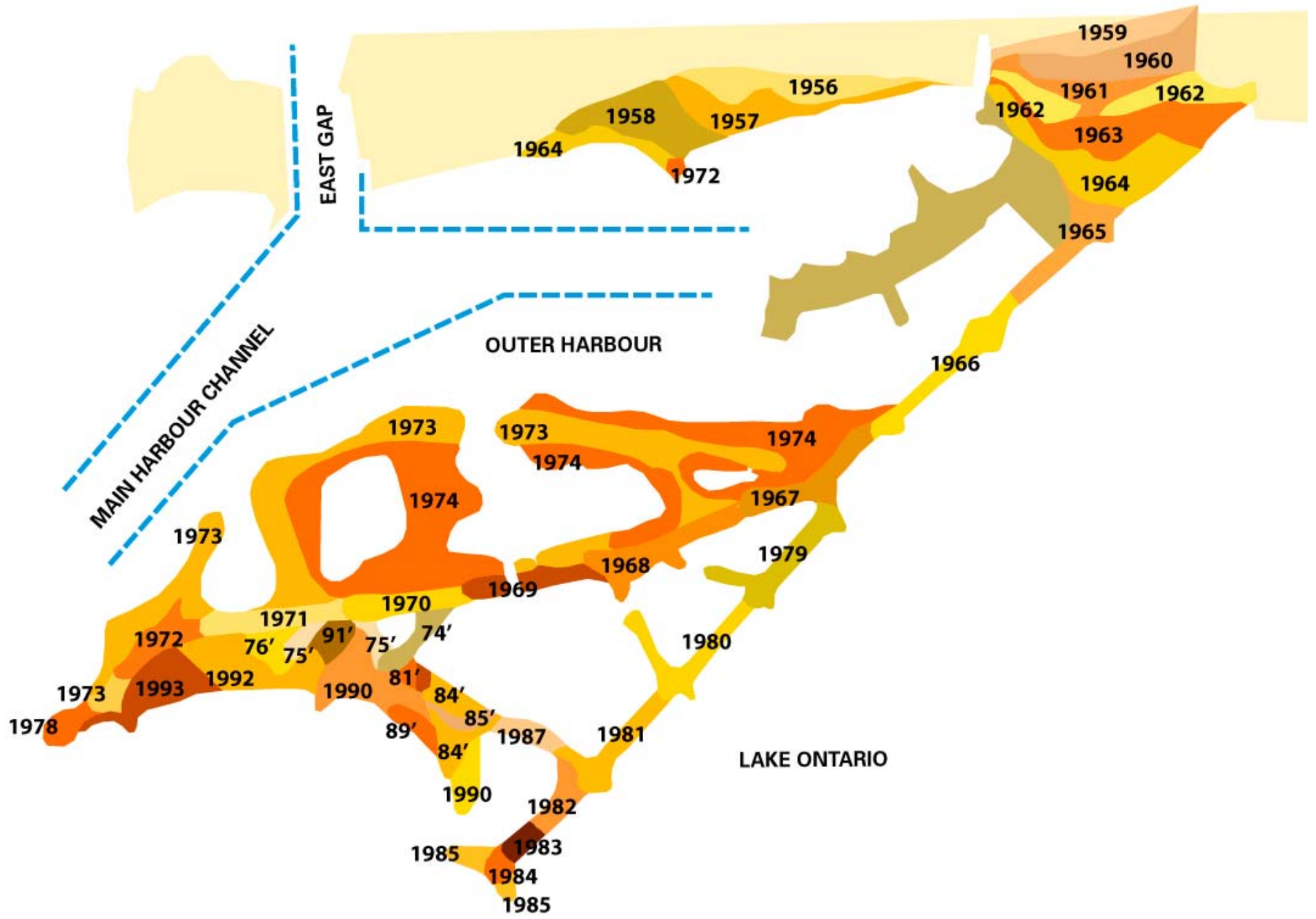
JUNE 20 1912



**port**



**dredge and fill operations  
construct a series of 'sites' over time**





**neighborhood (simcoe park)**



**beach (simcoe park)**





**economic  
paradigm shift**



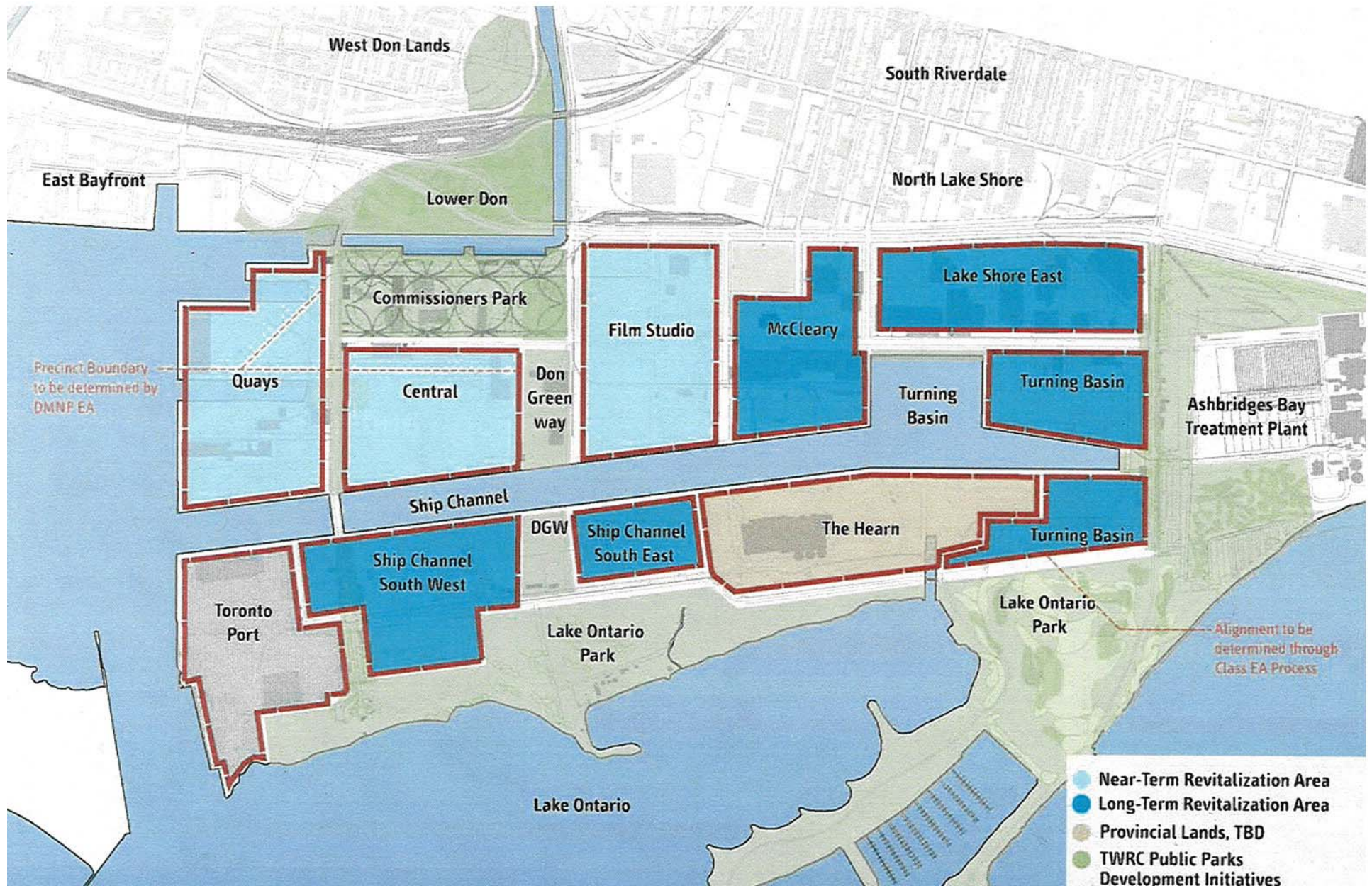








# mixed use future





**collage and contradictions**

**found qualities that make the site dynamic**



**pioneer lake clubs**

# complex choreography of activity, self-governed by cooperative federations





**30 or more years on the lake  
(water rats triathalon, march 1972)**



**aggregated, compact and efficient**



**incubators for canadian champions**



**social infrastructure for public instruction  
and access to the water**



**communal summer house**





**container encampments**



**four-season outposts**

**cormorants**



**man-made 'urban wilderness'**



**built over time from by-products  
of development (1971)**



**deposition of different material mixes  
produced a set of distinct "petri dishes"**



**acted on by time, colonizing species, agencies, activists and economic forces, creating**

- **coastal meadow marsh (rare)**
- **swamp thicket and forest**
- **sand dunes**
- **beaches**
- **sand and gravel bars**
- **shallow marsh**
- **young successional woodland**

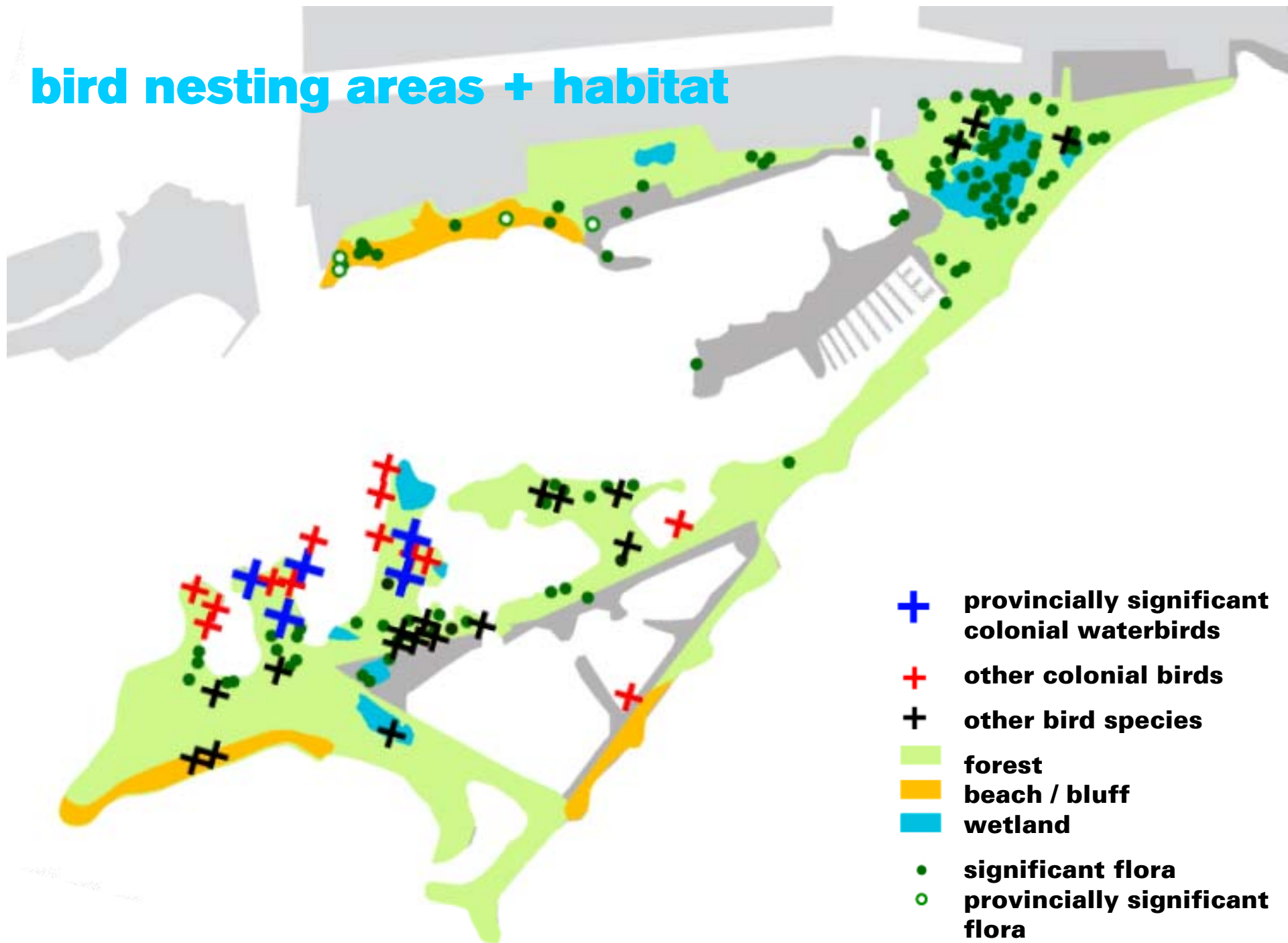


**tommy thompson park is now a globally important bird area for colonial waterbirds: cormorants, terns, herons and gulls**

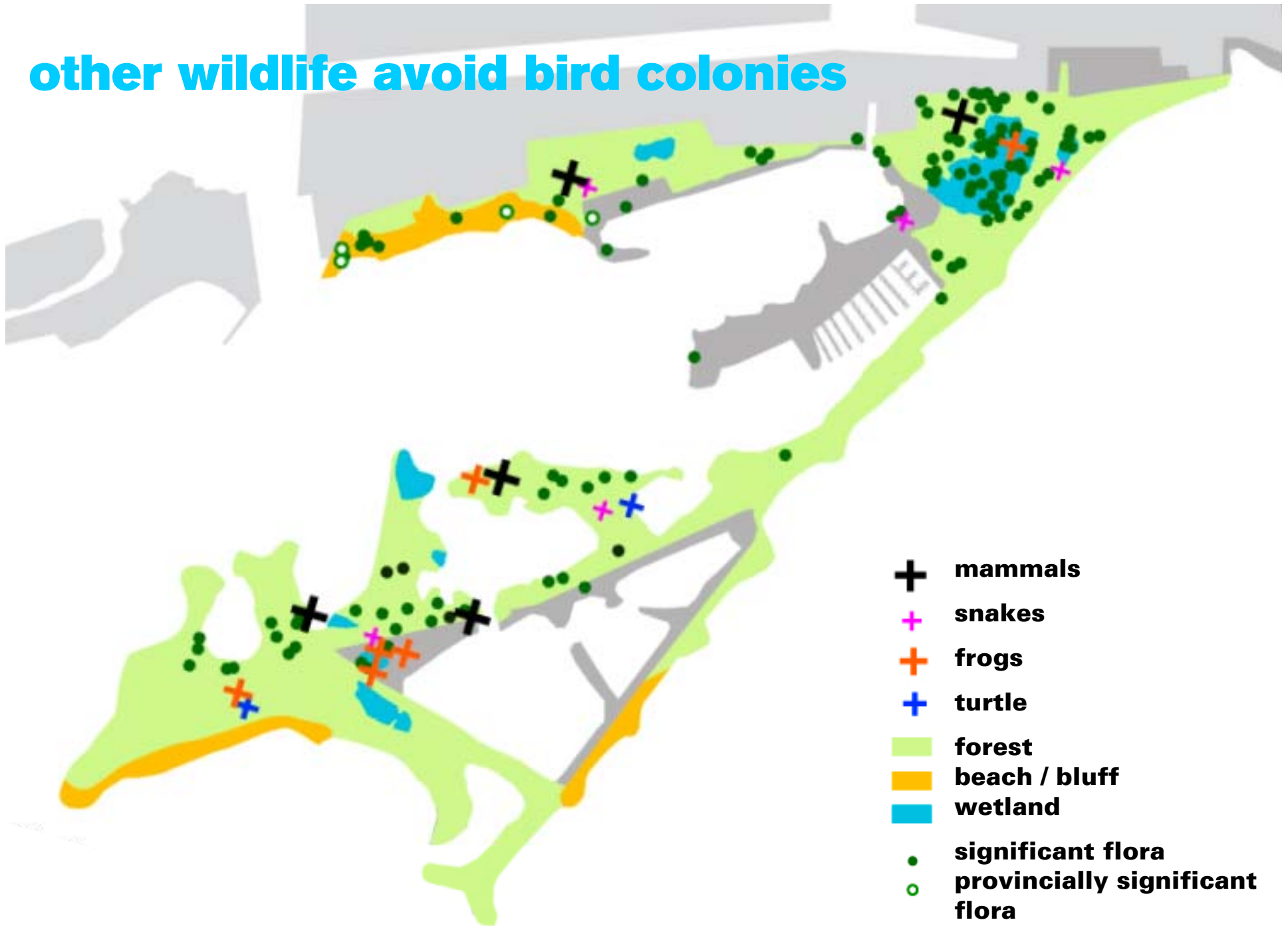
**and an important feeding and resting stop for songbirds on the great lakes flyway en route to nesting grounds in boreal forests: warblers, thrushes, sparrows and kinglets**



# bird nesting areas + habitat



# other wildlife avoid bird colonies







# debate about ecological process and the role of human action in 'urban wilderness'



**what is a  
contemporary  
waterfront  
park?**



# **large-scale nature:**

**ecological diversity,  
natural process / dynamism,  
restoration and conservation,  
water quality improvement,  
wildlife habitat / flyway station  
education, birding / tracking**







# large-scale recreation:

**cycling,  
running, walking / hiking,  
cross country skiing,  
skating**







# water sports:

sailing, kayaking, canoeing,  
wind surfing, kite boarding,  
rowing, dragon boat racing,  
swimming and fishing,  
social boating clubs and regattas,  
community instruction,  
yachting, waterskiing, jetskiing







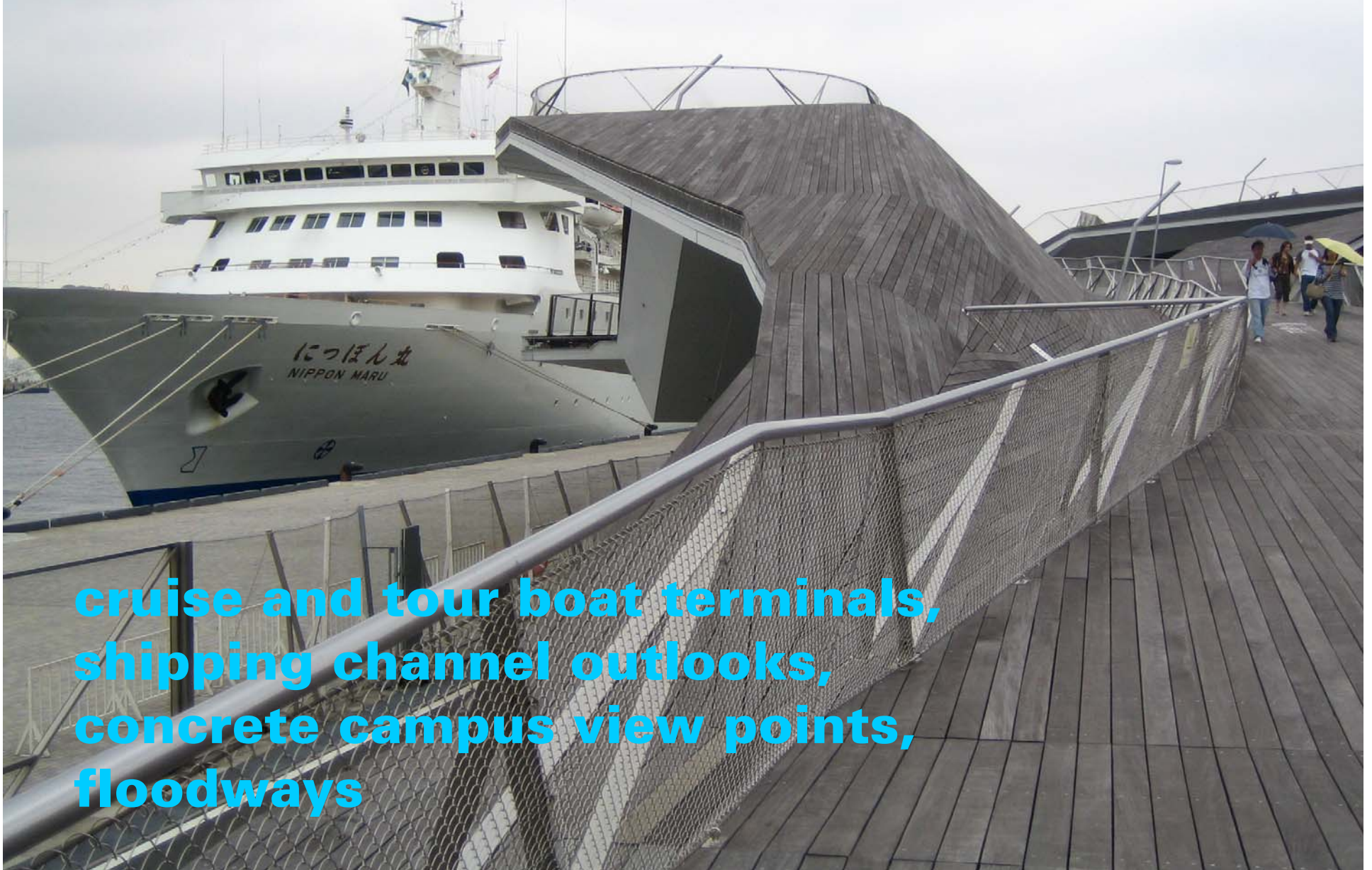






# port park:

**cruise and tour boat terminals,  
shipping channel outlooks,  
concrete campus view points,  
floodways**











# **urban social space:**

**public art and exhibition spaces,  
community gardens and clubs,  
outdoor classrooms,  
amphitheatres and bandshells,  
gardens, picnic areas, playgrounds,  
restaurants,  
meeting places**









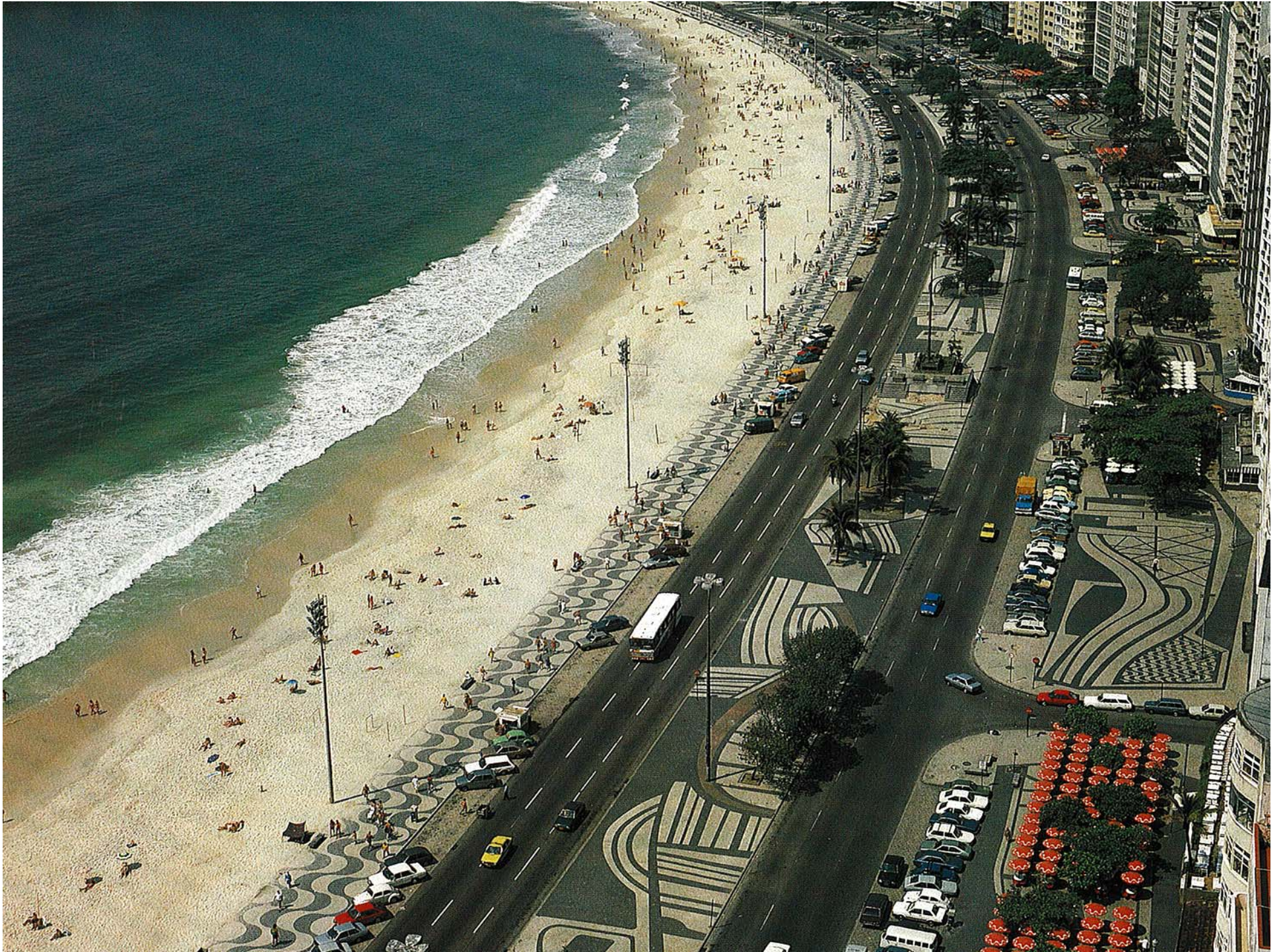






# **iconic destinations:**

**new events and landmarks,  
stadiums and performance venues,  
aviaries, astronomical observatories,  
cultural institutions,  
waterfront esplanade**











# mix + diversity

**WILD AND  
ECOLOGICALLY RICH**

**large-scale nature**

**large-scale recreation**

**water sports**

**port park**

**urban social spaces**

**iconic destinations**

**ACTIVE, URBAN AND  
EVENTFUL**





# **workshop groups:**

**5 ideas workshops**

**1 youth ideas workshop  
(age 15 and under)**



# **communication & feedback:**

**TORONTO WATERFRONT REVITALIZATION CORPORATION**

**(416) 214-1344**

**[WWW.TOWATERFRONT.CA](http://WWW.TOWATERFRONT.CA)**

**f0**