



lake ontario park

public forum #3 • july 10th, 2008



AGENDA

- 1 OVERVIEW OF LAKE ONTARIO PARK MASTER PLAN**
- 2 QUESTIONS OF CLARIFICATION**
- 3 NEXT STEPS IN PLANNING PROCESS**



TEAM

field operations

Schollen & Company Inc.

Kidd Consulting

Hamilton, Rabinovitz & Alschuler

North-South Environmental

Nina-Marie Lister

CCL/IBI

Poulous and Cheung

Archaeological Services Inc.

Unterman McPhail Associates



STEERING COMMITTEE

Waterfront Toronto

Environment Canada

Toronto Parks Forestry Recreation (PFR)

Toronto And Region Conservation Authority (TRCA)

Toronto Economic Development Corporation (TEDCO)

Toronto Planning

Toronto Port Authority (TPA)

Toronto Ward Councilors

Toronto Waterfront Secretariat

Toronto Water



STAKEHOLDER COMMITTEE

ABTP Neighbourhood Liaison Committee

Aquatic Park Sailing Club

Ashbridge's Bay Yacht Club

Balmy Beach Club (BBC)

Beaches Lions Club

Beacon of the Ancestors Foundation

Council of Commodores

Friends of the Spit

Navy League

Outer Harbour Sailing Federation (OHSF)

Portlands Action Committee

R.C. Harris Filtration Plant Public Advisory Committee

South Riverdale Health Centre

Toronto Cycling Committee

Toronto Field Naturalists

Toronto Hydroplane & Sailing Club (TH&SC)

Toronto Ornithological Club

West Don Lands Committee



SCHEDULE

24-MONTH PROCESS IN 3 PHASES

1 review, outreach & programming (**April – Sept 2006**)

Public Forum #1 June 2006

2 vision, planning & design (**Sept 2006 – Jan 2007**)

Public Forum #2 January 2007

3 feedback, revision & implementation strategy (**Jan 2007 – July 2008**)

Monthly Steering Committee Meetings

Bi-monthly Stakeholder Committee Meetings

Public Forum #3 July 2008

SITE



humber valley

don valley

lake ontario park



lake ontario park
925 acres

7 km







ORIGINAL SHORELINE WAS DEFINED BY FISHERMAN'S ISLAND, A SAND BAR THAT SHELTERED THE INNER HARBOUR AND ASHBRIDGE'S BAY, A 1,300-ACRE MARSH



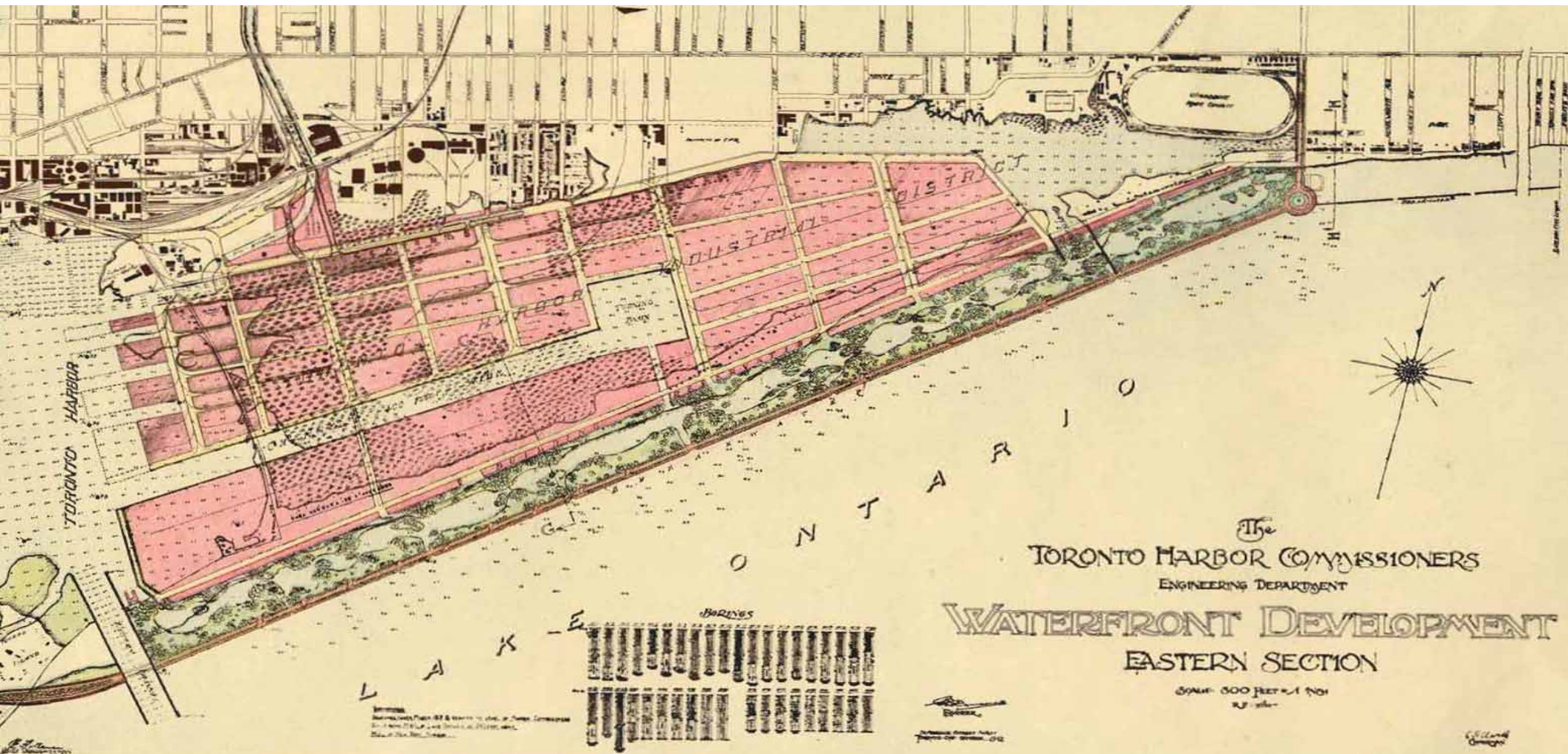
THE PROTECTED HARBOUR AND MARSH
FULL OF FISH AND GAME WERE PRIMARY
REASONS FOR THE FOUNDING OF TORONTO



HISTORIC "SETTLEMENT"



HISTORIC MARSH



ASHBRIDGE'S BAY WAS FILLED TO CREATE THE PORT AND TREATMENT PLANT

CHERRY BEACH 13ha / 32ac



1. cherry beach

13 ha / 32 ac

NORTH SHORE 29ha / 72ac



2. north shore

29 ha / 72 ac



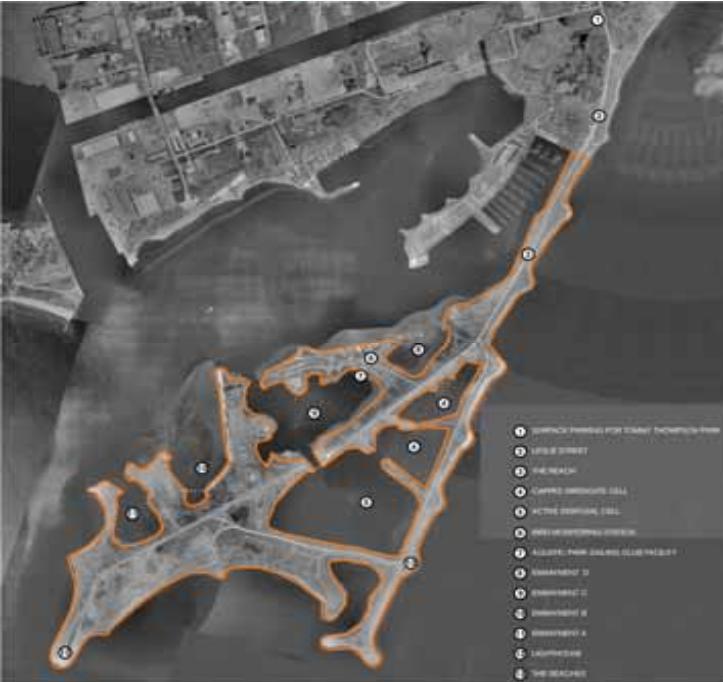
3. outer harbour water park

302 ha / 746 ac



4. outer harbour marina

21 ha / 52 ac



5. tommy thompson park

136 ha / 336 ac

BASE LANDS 38ha / 94ac



6. base lands

38 ha / 94 ac



7. ashbridge's bay treatment plant

38 ha / 94 ac



8. ashbridge's bay park

45 ha / 111 ac

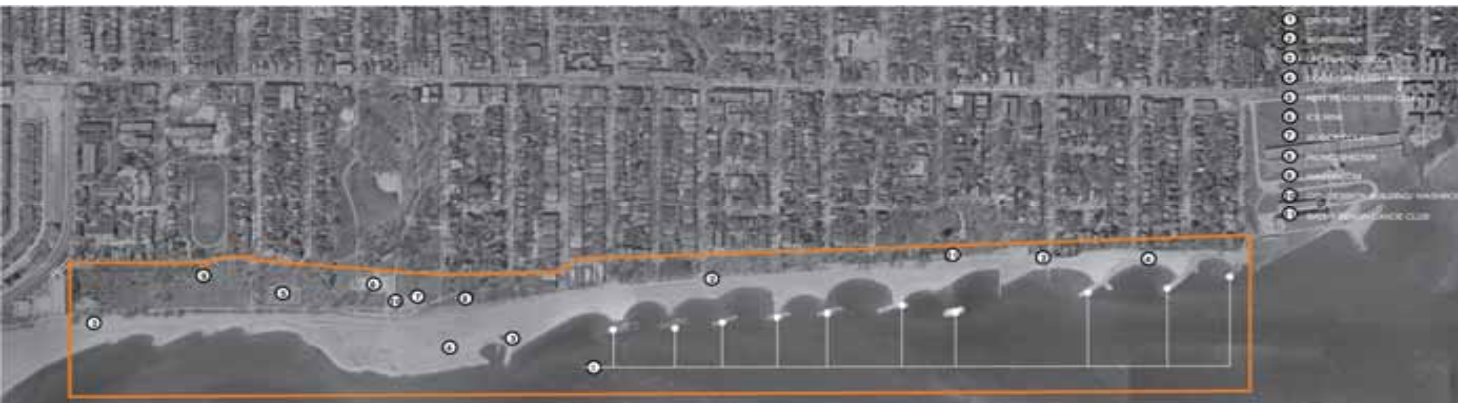
WOODBINE PARK 16ha / 40ac



9. woodbine park

16 ha / 40 ac

EASTERN BEACHES 22ha / 54ac



10. eastern beaches

22 ha / 54 ac

KEW GARDENS 7ha / 17ac



11. kew gardens

7 ha / 17 ac

PANTRY PARK 1.5ha / 4ac



12. pantry park

1.5 ha / 4 ac

R.C. HARRIS FILTRATION PLANT 8ha / 20ac



13. r c harris filtration plant

8 ha / 20 ac

SITE QUALITIES & CHALLENGES

THEMES FROM EARLY PUBLIC INPUT

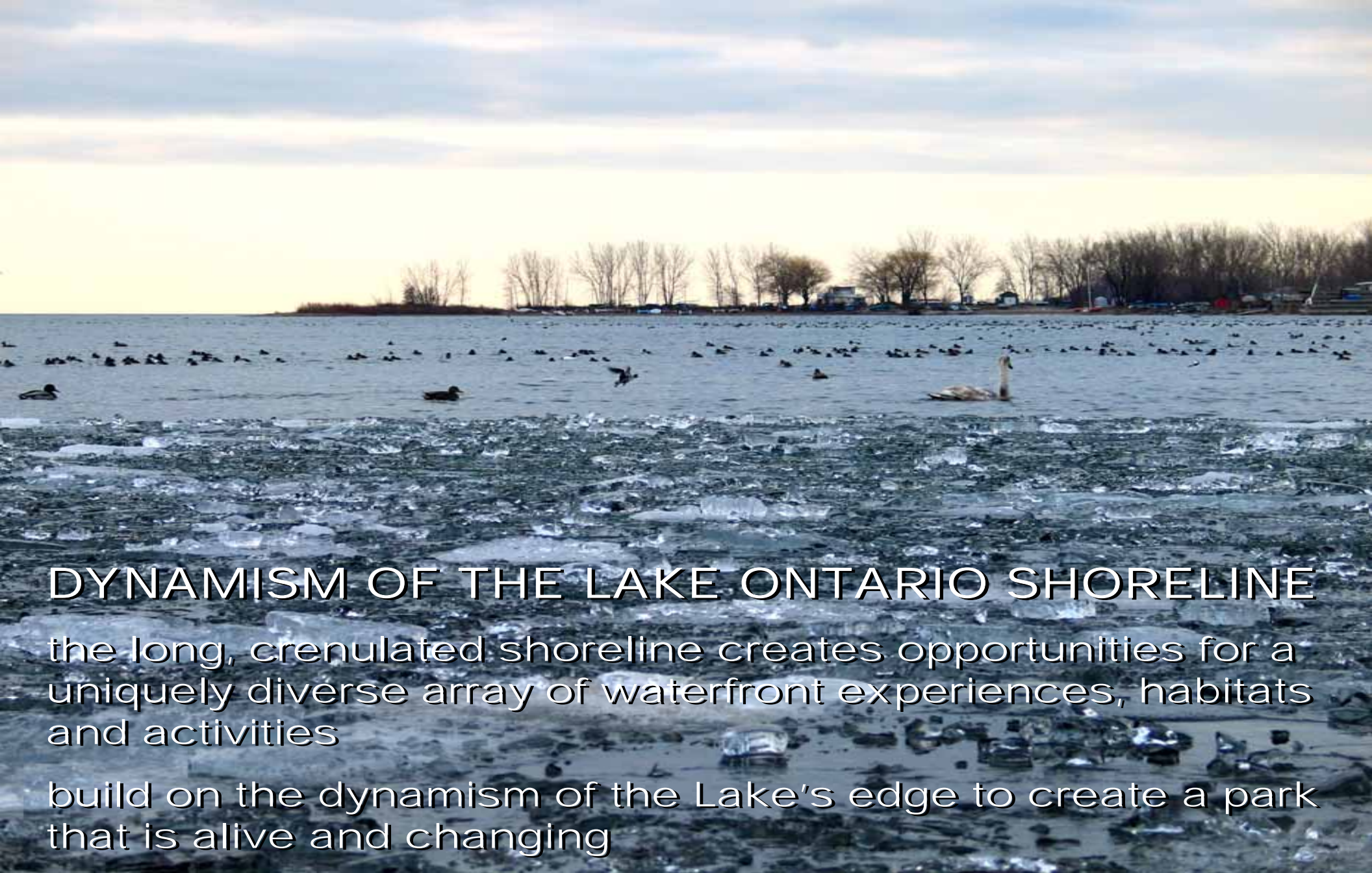
- 1 rural cottage: sense of the unknown, rough and remote
- 2 heterogenous mix: diverse parcels, unsanitized by design
- 3 open and public: park for the whole city
- 4 generous habitat: water quality and green connectivity
- 5 outdoor education: non-didactic, experiential approach
- 6 city orientation: strong linkage north-south and east-west
- 7 lake orientation: varied edge and microclimates
- 8 active use: mix of "big nature," water sports, rec and culture



URBAN WILD

provide generous wilds and ecological infrastructure for the city, as well as unusual experiences of nature

make visible the Canadian imperative for the protection and development of ecological assets



DYNAMISM OF THE LAKE ONTARIO SHORELINE

the long, crenulated shoreline creates opportunities for a uniquely diverse array of waterfront experiences, habitats and activities

build on the dynamism of the Lake's edge to create a park that is alive and changing



CHANGE IN CONTEXT AS PORT LANDS BECOMES MAJOR URBAN CENTRE

a new community of over 40,000 residents will bring many more people to the park area to work, shop and recreate



CREATIVE RESPONSE TO SITE MANAGEMENT

the lake ontario park site has a legacy of industrial and port uses

the park design incorporates a range of strategies for responding to poor soil conditions to create design features and approaches



UNIFIED ENSEMBLE

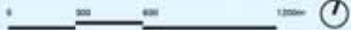
pull together disparate sites to create a unified ensemble while retaining a great deal of difference in the character and programming of its components

THE MASTER PLAN



lake ontario park

draft master plan july 10, 2008



THE MASTER PLAN

PRIMARY GOALS

- 1 Promote a bold, flexible and resilient landscape framework.**
- 2 Create a vibrant lakefront of distinctive activities and unique water-oriented programming.**
- 3 Build a connective circulation system to unify the large park.**
- 4 Cultivate a rich mosaic of terrestrial and aquatic life that becomes the center of a continuous regional greenway.**
- 5 Create a realistic, low-maintenance and sustainable landscape.**
- 6 Preserve and amplify the remarkably unique settings.**

PROMOTE A BOLD, FLEXIBLE & RESILIENT LANDSCAPE FRAMEWORK

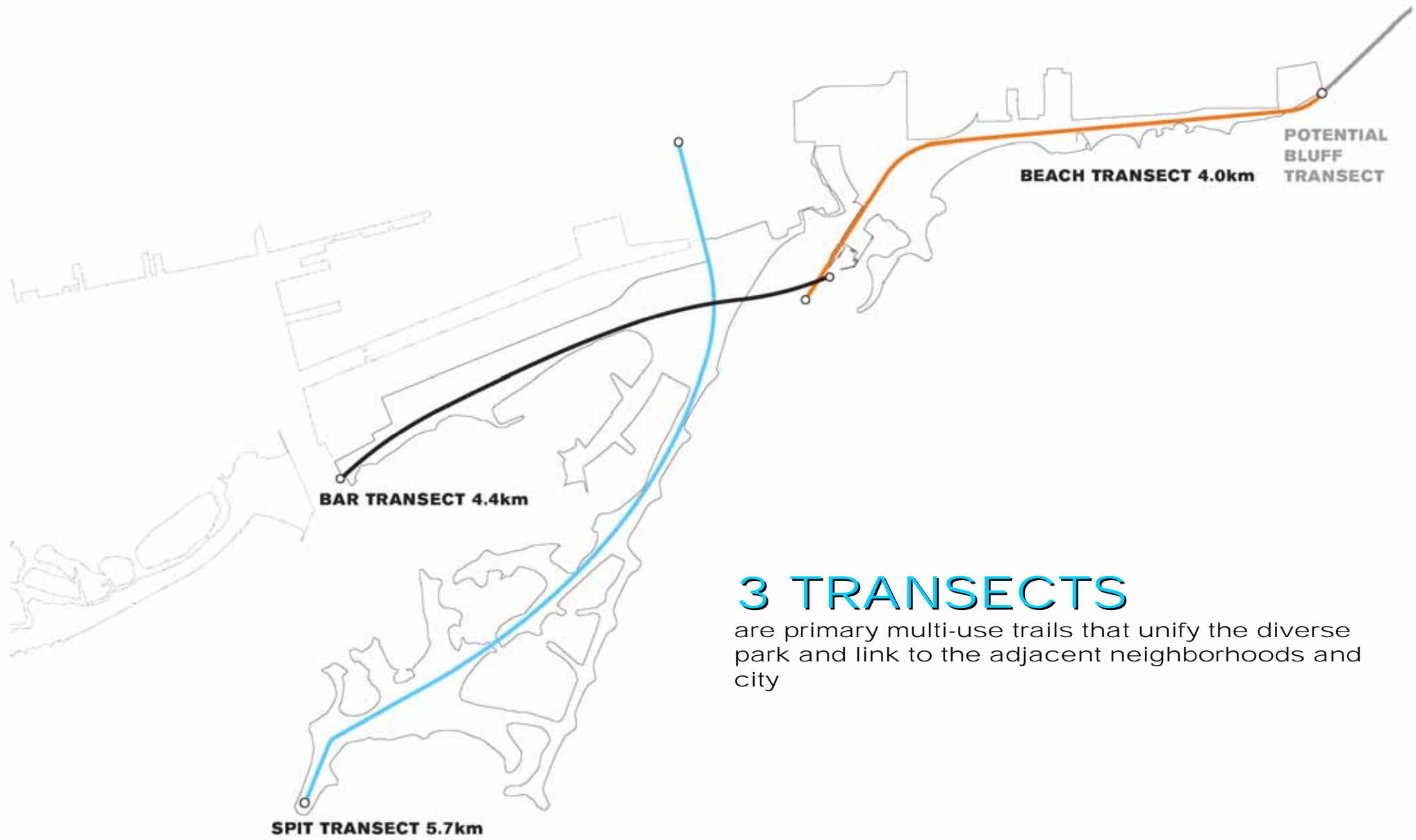
5 ORGANIZING IDEAS



A CONNECTIVE, GREEN WATERFRONT

the park has the potential to assemble a thickened green lakefront that links the Don River Ravine and Greenway to Tommy Thompson Park



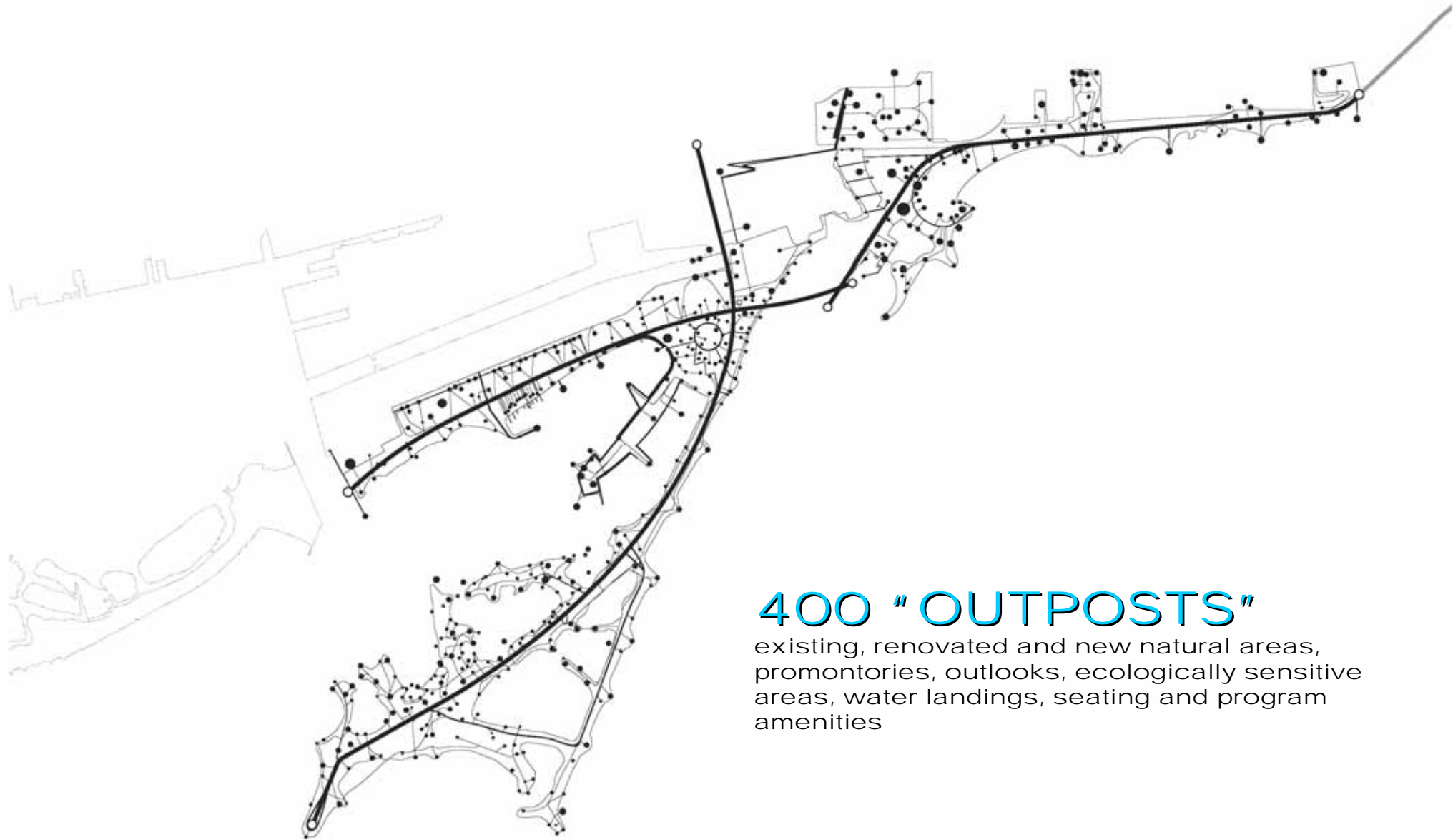


3 TRANSECTS

are primary multi-use trails that unify the diverse park and link to the adjacent neighborhoods and city



TRANSECTS



400 "OUTPOSTS"

existing, renovated and new natural areas,
promontories, outlooks, ecologically sensitive
areas, water landings, seating and program
amenities



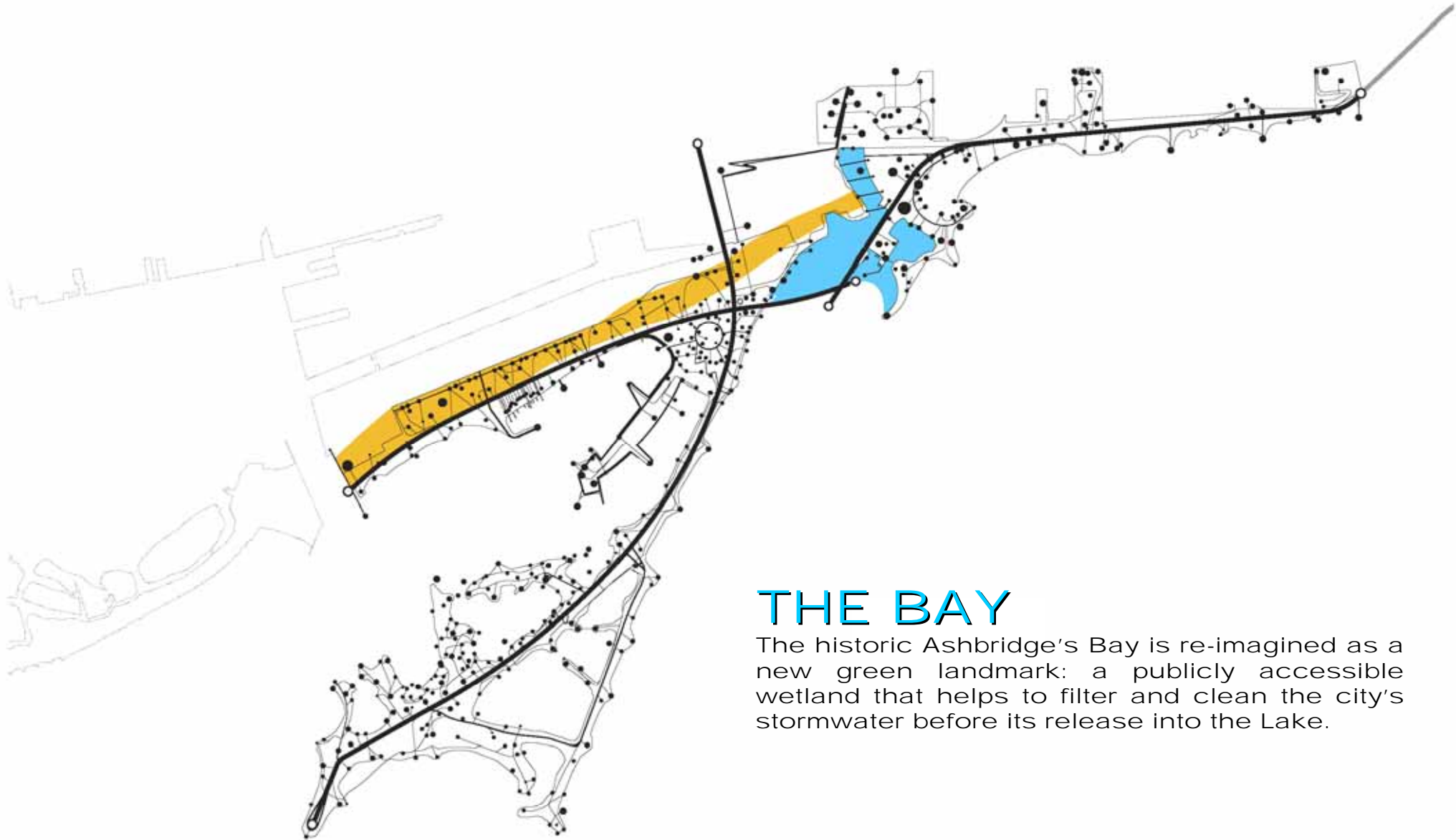


THE BAR

The historic Fisherman's Island is re-imagined as a new defining edge of the city



THE BAR



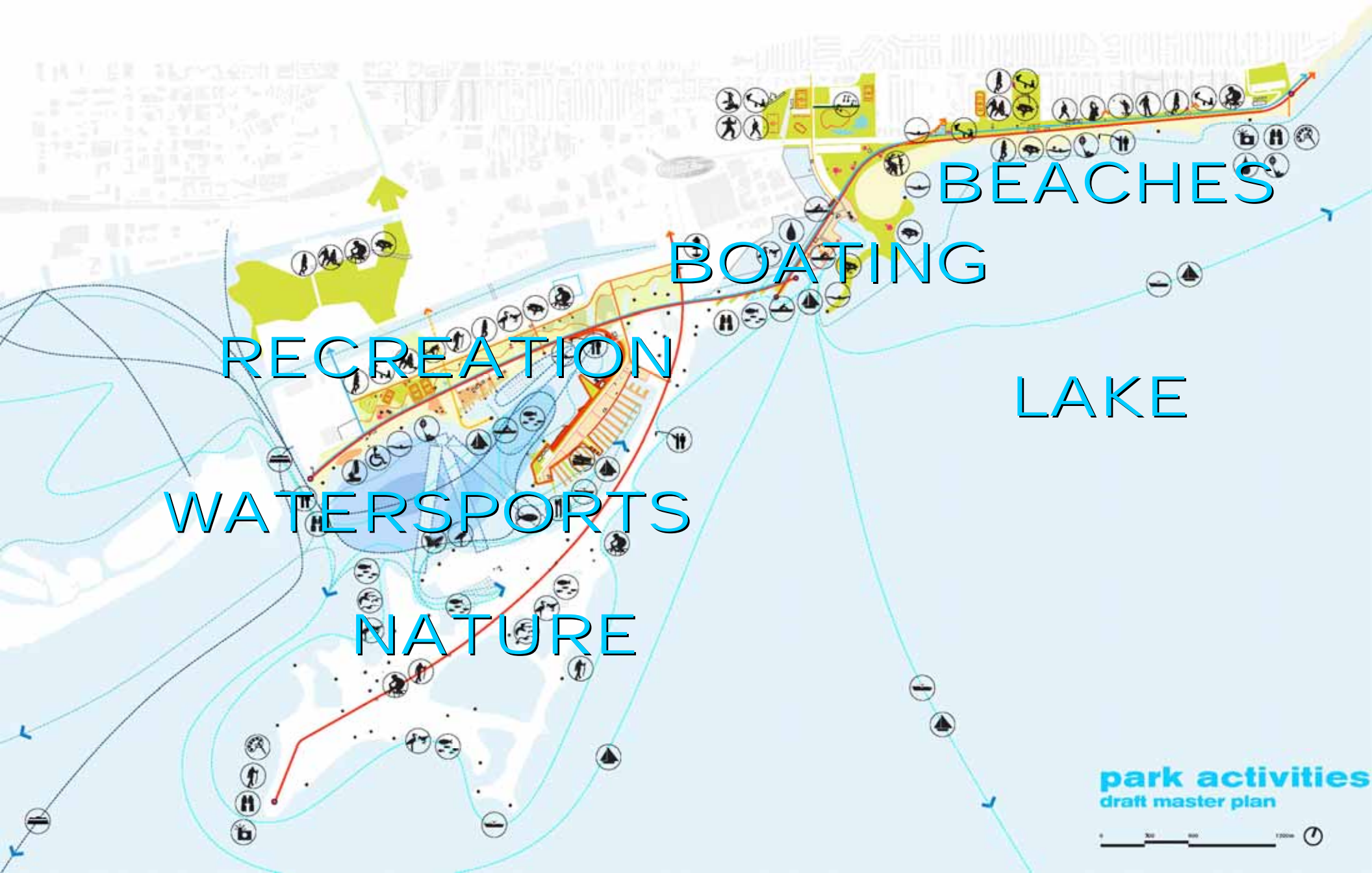
THE BAY

The historic Ashbridge's Bay is re-imagined as a new green landmark: a publicly accessible wetland that helps to filter and clean the city's stormwater before its release into the Lake.



THE BAY

CREATE A VIBRANT LAKEFRONT OF
DISTINCTIVE ACTIVITIES



RECREATION

WATERSPORTS

NATURE

BOATING

BEACHES

LAKE

park activities
draft master plan



ACTIVE SPORTS





WATER SPORTS



PLAY



PICNIC SITES



ECO-OUTPOSTS

A group of people are enjoying fishing on a wooden pier. In the foreground, a man in a grey t-shirt is smiling and holding up a large fish. In the background, a woman in a green shirt is celebrating with her arms raised, and a child is bending over to handle a small fish. Other people are walking along the pier, some carrying fishing gear. The pier is surrounded by water, and a city skyline with a prominent tower is visible in the distance under a cloudy sky.

FISHING & WATERSIDE PLAY

A group of people are performing a fire dance at night. They are holding flaming torches and are illuminated by the fire. The scene is dark, with the fire providing the main light source. The text "CULTURE & ARTS" is overlaid in the center of the image.

CULTURE & ARTS



PERFORMANCES



FLEXIBLE AMENITIES

A wide expanse of a frozen body of water, likely a lake or sea, with a rocky shoreline in the foreground. The water is covered in a thick layer of ice, with numerous small, clear ice floes scattered across the surface. The shoreline is composed of dark, mossy rocks and seaweed. The sky is overcast, and the overall scene is cold and desolate.

ELEMENTAL NATURE

A landscape photograph capturing a serene moment at dusk or dawn. The foreground is dominated by the dark, silhouetted branches of bare trees, creating a dense, intricate pattern against the sky. The sky itself is a mix of deep blues, purples, and oranges, with soft, wispy clouds catching the low light. A thin, horizontal band of warm orange and yellow light is visible just above the tree line, suggesting the sun is just below the horizon. The overall mood is quiet and contemplative.

ELEMENTAL NATURE

- Wetlands
- Successional Meadows
- Deciduous Forest
- Swamp Forest
- Nesting Sites



- Sport Fields
- Multi-use Fields
- Multi-use Trails

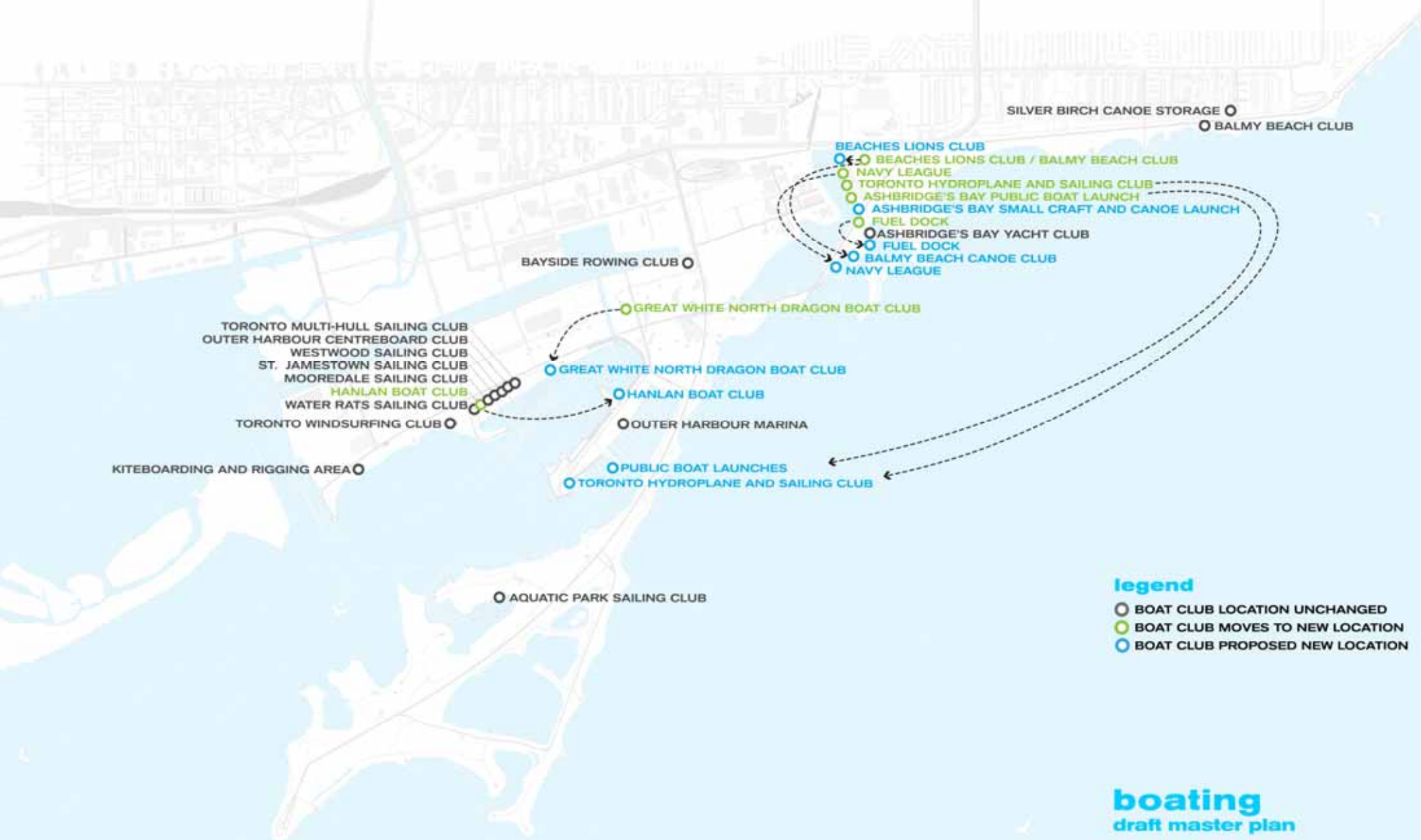


- Open lawn areas
- Open meadow areas
- Paths, trails, boardwalks
- and piers
- Playgrounds
- Beaches



- Boat clubs
- Boat launches
- Boat docks
- Kayak & canoe landings





SILVER BIRCH CANOE STORAGE ○
BALMY BEACH CLUB ○

BEACHES LIONS CLUB ○
BEACHES LIONS CLUB / BALMY BEACH CLUB ●
NAVY LEAGUE ○
TORONTO HYDROPLANE AND SAILING CLUB ○
ASHBRIDGE'S BAY PUBLIC BOAT LAUNCH ○
ASHBRIDGE'S BAY SMALL CRAFT AND CANOE LAUNCH ○
FUEL DOCK ○
ASHBRIDGE'S BAY YACHT CLUB ○
FUEL DOCK ○
BALMY BEACH CANOE CLUB ○
NAVY LEAGUE ○

BAYSIDE ROWING CLUB ○

GREAT WHITE NORTH DRAGON BOAT CLUB ●

TORONTO MULTI-HULL SAILING CLUB ○
OUTER HARBOUR CENTREBOARD CLUB ○
WESTWOOD SAILING CLUB ○
ST. JAMESTOWN SAILING CLUB ○
MOOREDALE SAILING CLUB ○
HANLAN BOAT CLUB ●
WATER RATS SAILING CLUB ○
TORONTO WINDSURFING CLUB ○

GREAT WHITE NORTH DRAGON BOAT CLUB ○

HANLAN BOAT CLUB ○

OUTER HARBOUR MARINA ○

KITEBOARDING AND RIGGING AREA ○

PUBLIC BOAT LAUNCHES ○
TORONTO HYDROPLANE AND SAILING CLUB ○

AQUATIC PARK SAILING CLUB ○



**BUILD A CONNECTIVE CIRCULATION
SYSTEM TO UNIFY THE LARGE PARK**



CONNECTIVITY



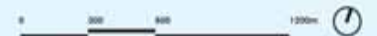


- LOP should be largely car free
- promote Unwin Avenue as a park drive
- pedestrians & cyclists have precedence

legend

- VEHICULAR
- - - SHUTTLE
- PARKING

vehicular circulation draft master plan



Lake Ontario Park should be largely car free



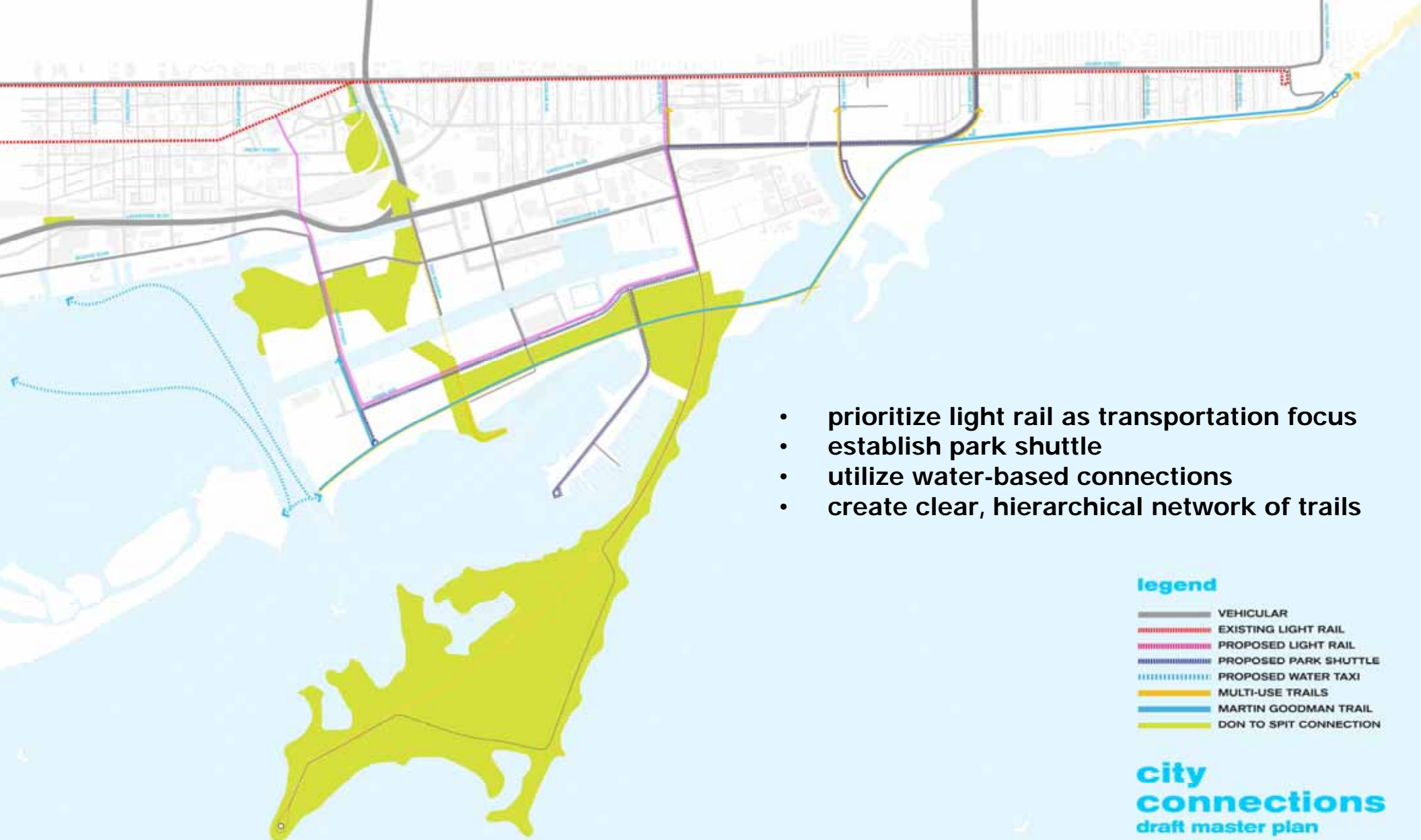
- focus parking at the perimeter
- balance demand with shuttle & LRT
- utilize temporary, shared & off-site parking
- promote permeable surfaces & shade canopy

legend

- VEHICULAR
- - - SHUTTLE
- P — PARKING
- P — POTENTIAL SEASONAL PARKING
- SEASONAL PARKING / BOAT STORAGE
- NON-VEHICULAR

parking
draft master plan





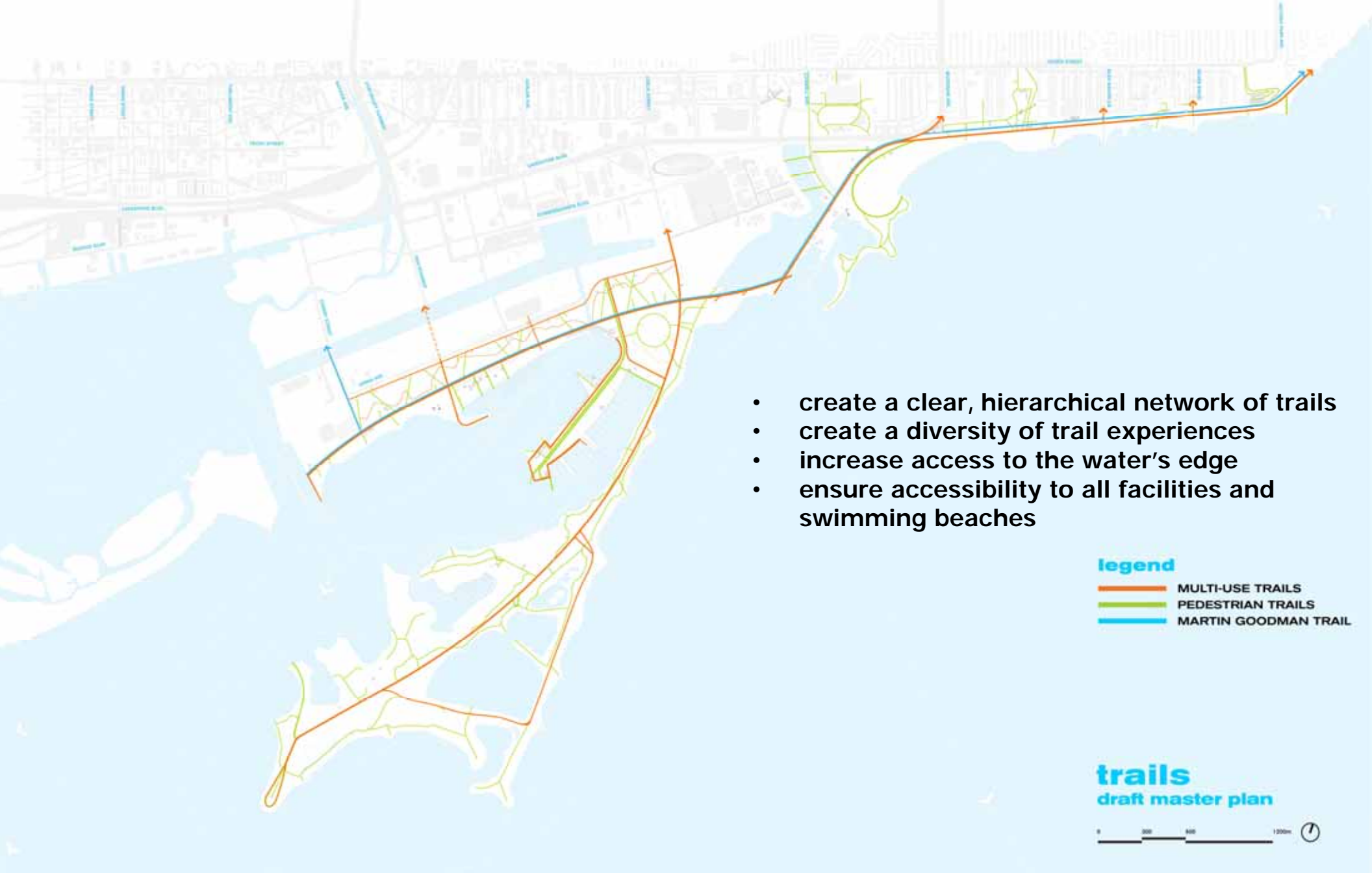
- prioritize light rail as transportation focus
- establish park shuttle
- utilize water-based connections
- create clear, hierarchical network of trails

legend

- VEHICULAR
- - - EXISTING LIGHT RAIL
- - - PROPOSED LIGHT RAIL
- - - PROPOSED PARK SHUTTLE
- PROPOSED WATER TAXI
- MULTI-USE TRAILS
- MARTIN GOODMAN TRAIL
- DON TO SPITT CONNECTION

city
connections
draft master plan



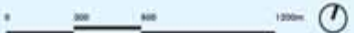


- create a clear, hierarchical network of trails
- create a diversity of trail experiences
- increase access to the water's edge
- ensure accessibility to all facilities and swimming beaches

legend

- MULTI-USE TRAILS
- PEDESTRIAN TRAILS
- MARTIN GOODMAN TRAIL

trails
draft master plan





TRANSECTS



MARTIN GOODMAN TRAIL



MULTI-USE & SPECIALIZED TRAILS



SPECIALLY DESIGNATED & SEASONAL TRAILS

CULTIVATE A RICH MOSAIC OF
TERRESTRIAL & AQUATIC LIFE



DON RIVER PARK

LOWER DON

THE BASELANDS

THE BAR

DON GREENWAY

**TOMMY THOMPSON PARK
(THE SPIT)**

- create ecological linkages
- strong connection from the don to the spit
- manage access to protect sensitive areas
- recharge the site via natural process
- increase water quality for habitat & recreation

**connectivity:
the don to the spit**
draft master plan





DON RIVER PARK

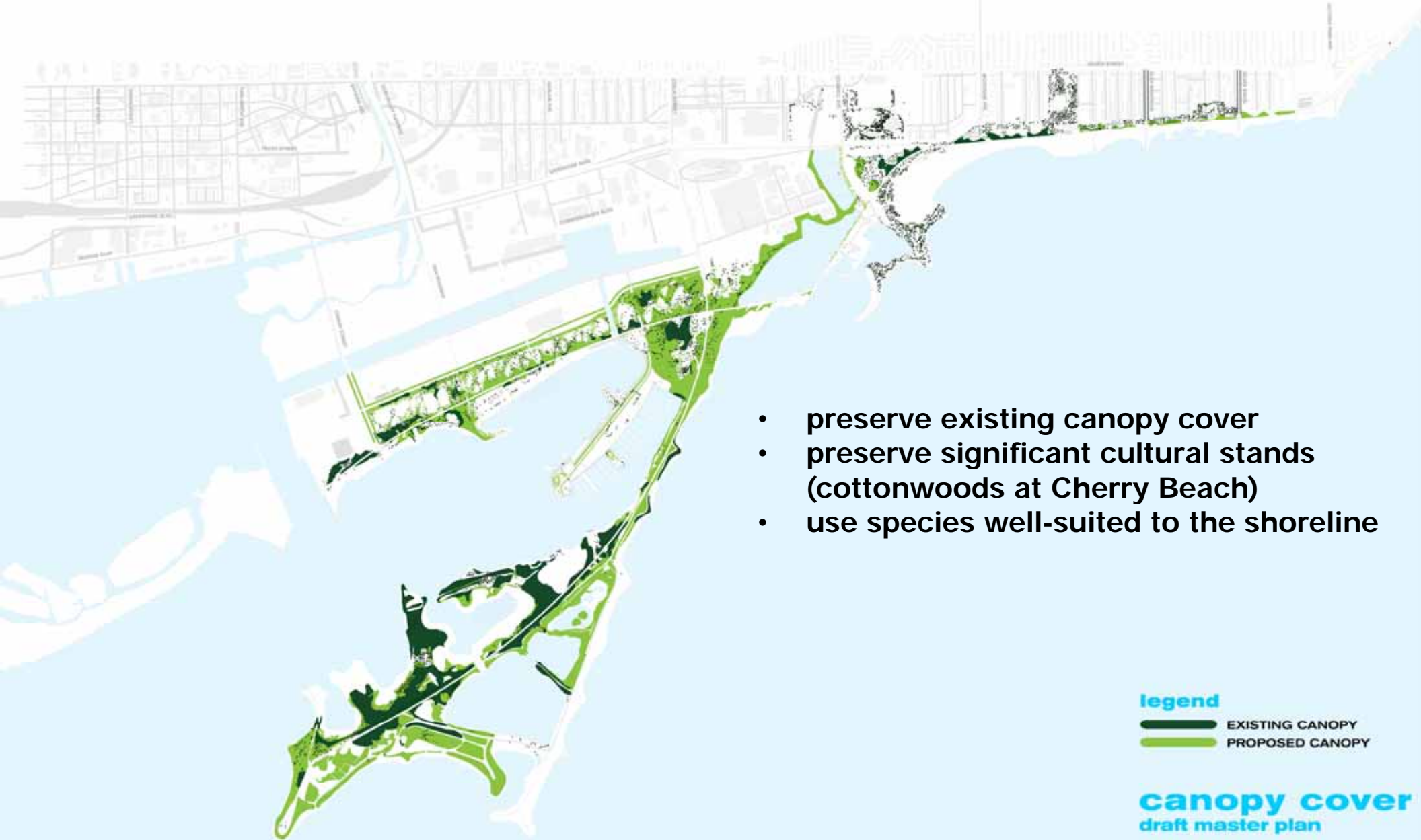
LOWER DON

legend

- AQUATIC HABITAT
- WETLAND
- MARSH
- BEACH
- MEADOW / GRASSLAND
- FIELD
- RECREATION TURF
- THICKET
- SUCCESSIONAL SCRUB
- WET WOODS
- DON GREENWAY
- MIXED WOODLAND
- EXISTING WOODLAND

habitat & natural areas
draft master plan





- preserve existing canopy cover
- preserve significant cultural stands (cottonwoods at Cherry Beach)
- use species well-suited to the shoreline

legend
EXISTING CANOPY
PROPOSED CANOPY

canopy cover
draft master plan



CREATE A REALISTIC &
SUSTAINABLE LANDSCAPE



LANDSCAPE IN PROCESS



UTILIZE AVAILABLE RESOURCES

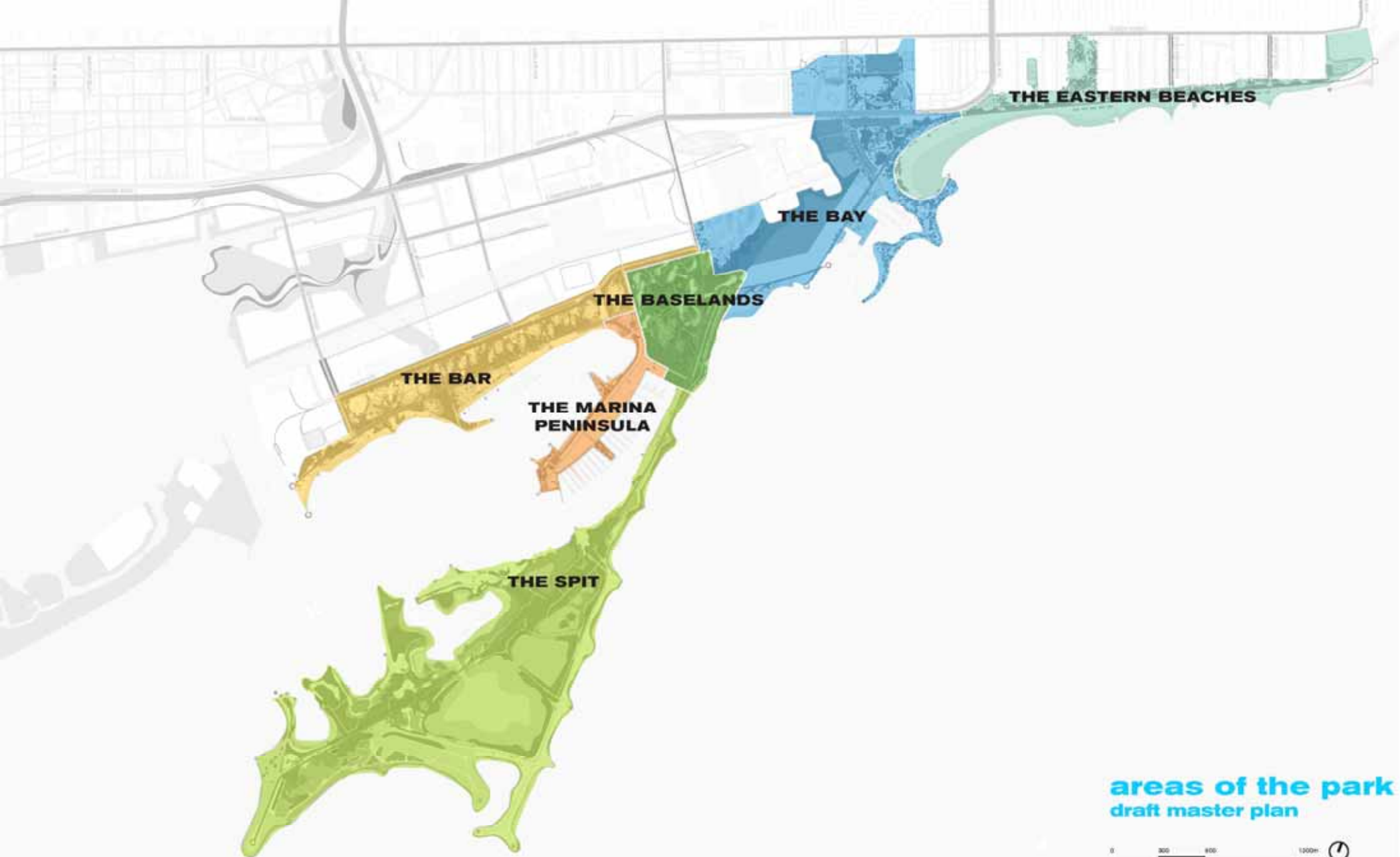
**PRESERVE AND AMPLIFY THE
REMARKABLY UNIQUE SETTINGS**







6 AREAS OF THE PARK



THE EASTERN BEACHES

THE BAY

THE BASELANDS

THE BAR

**THE MARINA
PENINSULA**

THE SPIT

areas of the park
draft master plan



THE BAR

extended beaches & waterside access, Don connection
and water taxi landing



OUTER HARBOUR

- CHERRY STREET GATEWAY
- FIRST NATIONS GROVE
- SOCCER & MULTI-USE FIELDS
- HIKING, CYCLING, RUNNING
CROSS COUNTRY TRAILS
- EXPANDED NATURAL AREAS
- EXTENDED BEACHES
- PASSIVE OPEN FIELDS
- NEW PICNIC AREAS
- PROMONTORY AT EASTERN
GAP

- PRIMARY PEDESTRIAN PATHS
- SECONDARY PEDESTRIAN PATHS
- BOARDWALK / PROMENADE
- MIXED-USE TRAIL
- VEHICULAR

THE BAR, CHERRY BEACH AND NORTH SHORE draft master plan





WINTER RECREATION



MULTI-USE & SPECIALIZED TRAILS



INCREASED CANOPY COVER



PRESERVED BEACHES

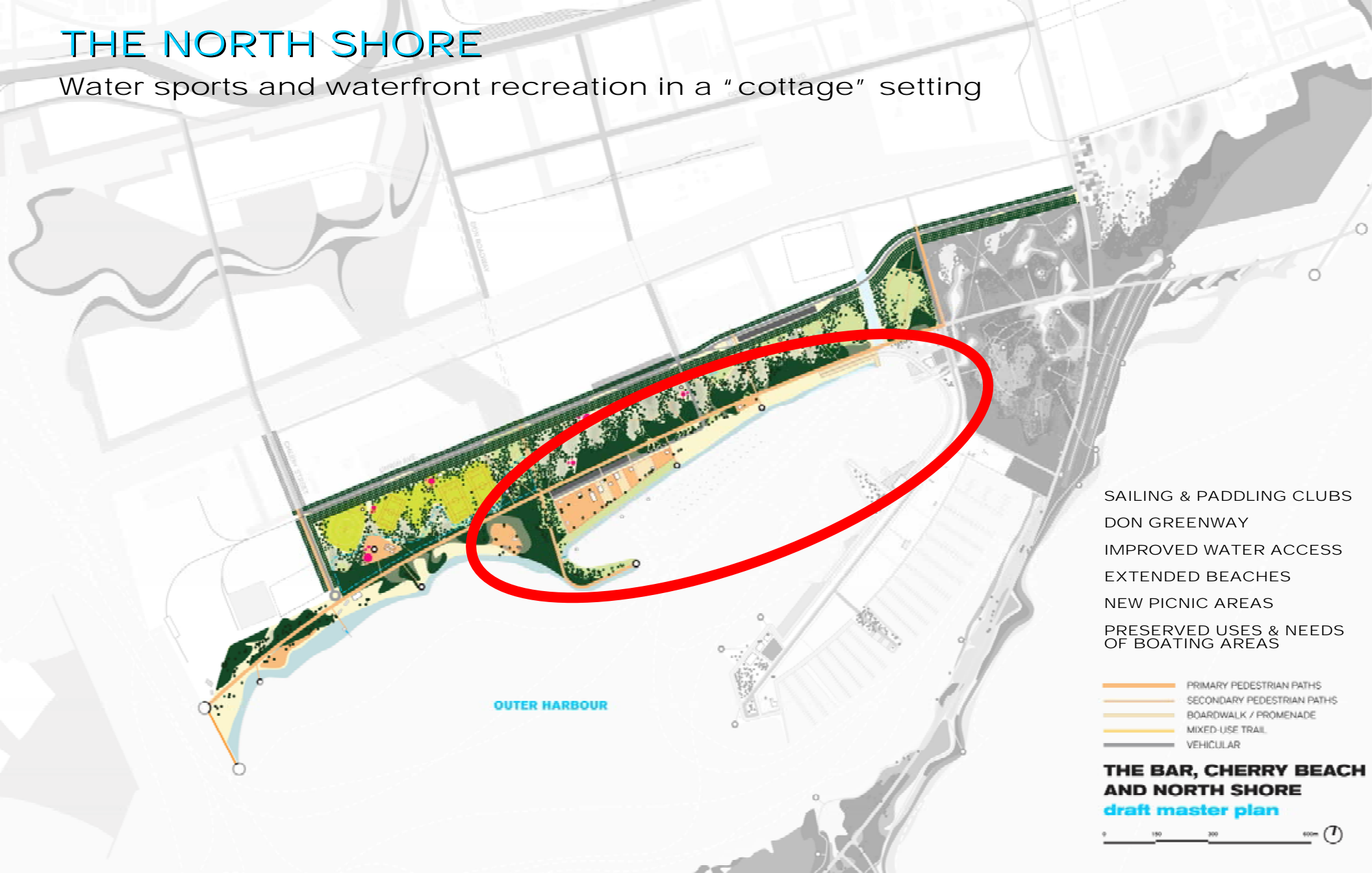


OFF-LEASH DOG AREA

(ON-GOING STUDY WITH STAKEHOLDERS, CITY & DESIGN TEAM)

THE NORTH SHORE

Water sports and waterfront recreation in a "cottage" setting



OUTER HARBOUR

- SAILING & PADDLING CLUBS
- DON GREENWAY
- IMPROVED WATER ACCESS
- EXTENDED BEACHES
- NEW PICNIC AREAS
- PRESERVED USES & NEEDS OF BOATING AREAS

- PRIMARY PEDESTRIAN PATHS
- SECONDARY PEDESTRIAN PATHS
- BOARDWALK / PROMENADE
- MIXED-USE TRAIL
- VEHICULAR

THE BAR, CHERRY BEACH AND NORTH SHORE
draft master plan





COMMUNITY BOATING CLUBS



NEW TRAILS & WATERSIDE ACCESS

(EAST OF COMMUNITY BOATING CLUBS)

THE MARINA PENINSULA

Public water access and views along an active recreation deck



OUTER HARBOUR

- WATERFRONT PROMENADE
- SPECTATOR TERRACES
- ADVENTURE CENTRE
- NEW FISHING PIERS
- NEW KAYAK LANDINGS
- SMALL WATERFRONT CAFÉ
- RELOCATED BOAT CLUBS
- RELOCATED BOAT LAUNCH

- PRIMARY PEDESTRIAN PATHS
- SECONDARY PEDESTRIAN PATHS
- BOARDWALK / PROMENADE
- MIXED-USE TRAIL
- VEHICULAR

THE MARINA PENINSULA
draft master plan





NEW RECREATION DECK & SPECTATOR OUTPOSTS



FLOATING DOCKS & LANDINGS



WATERFRONT CAFÉ



FISHING OUTPOSTS



- multi-purpose community rooms;
- PFR daycamps (eco-camps);
- orientation point for tours;
- referral to boat clubs;
- bike, canoe & kayak rentals;
- fishing;

WATERFRONT ADVENTURE CENTRE

THE BASE LANDS

Accessible "urban wilderness" centered around wet woods and marsh





URBAN WILDERNESS



WETLAND INTERPRETIVE ROUTE



WETLAND WATERWAY & INTERPRETIVE ROUTE

TOMMY THOMPSON PARK

Wild successional landscapes and habitats correspond with the Tommy Thompson Park Master Plan prepared by TRCA





EMERGENT LANDSCAPES ON MAN-MADE LAND



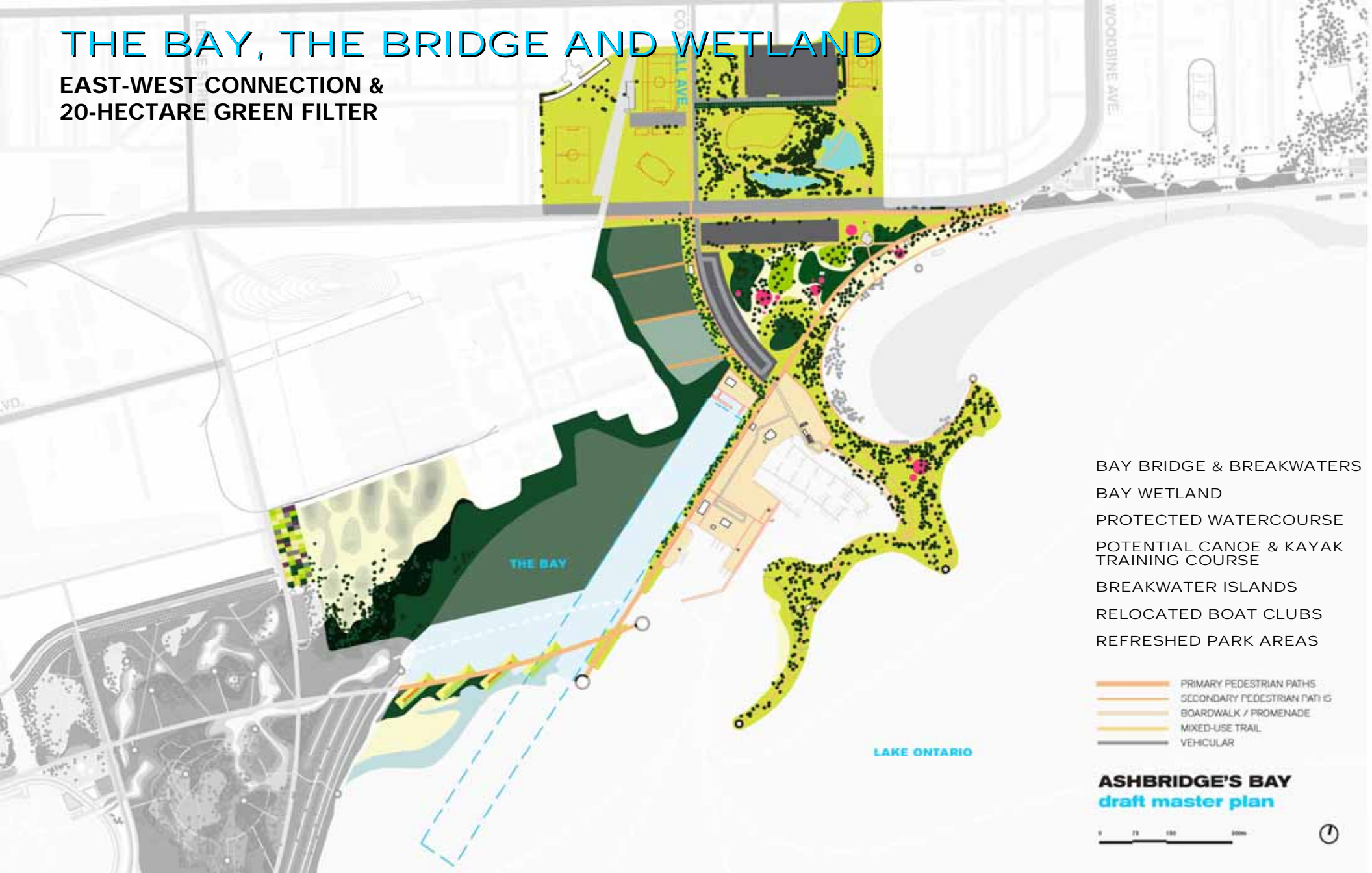
LIGHTHOUSE PROMONTORY



REMOTE OUTPOSTS & REFUGE

THE BAY, THE BRIDGE AND WETLAND

EAST-WEST CONNECTION &
20-HECTARE GREEN FILTER



- BAY BRIDGE & BREAKWATERS
- BAY WETLAND
- PROTECTED WATERCOURSE
- POTENTIAL CANOE & KAYAK TRAINING COURSE
- BREAKWATER ISLANDS
- RELOCATED BOAT CLUBS
- REFRESHED PARK AREAS

- PRIMARY PEDESTRIAN PATHS
- SECONDARY PEDESTRIAN PATHS
- BOARDWALK / PROMENADE
- MIXED-USE TRAIL
- VEHICULAR

ASHBRIDGE'S BAY
draft master plan





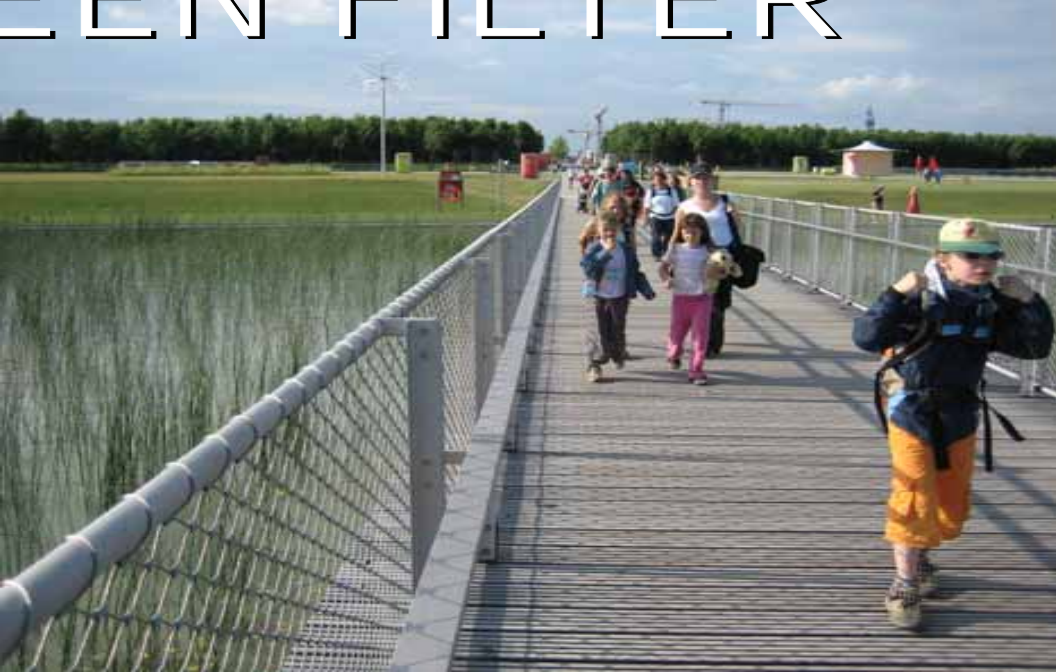
BAY BRIDGE, WATERCOURSE AND WETLAND



WATERCOURSE & SPECTATOR ISLANDS

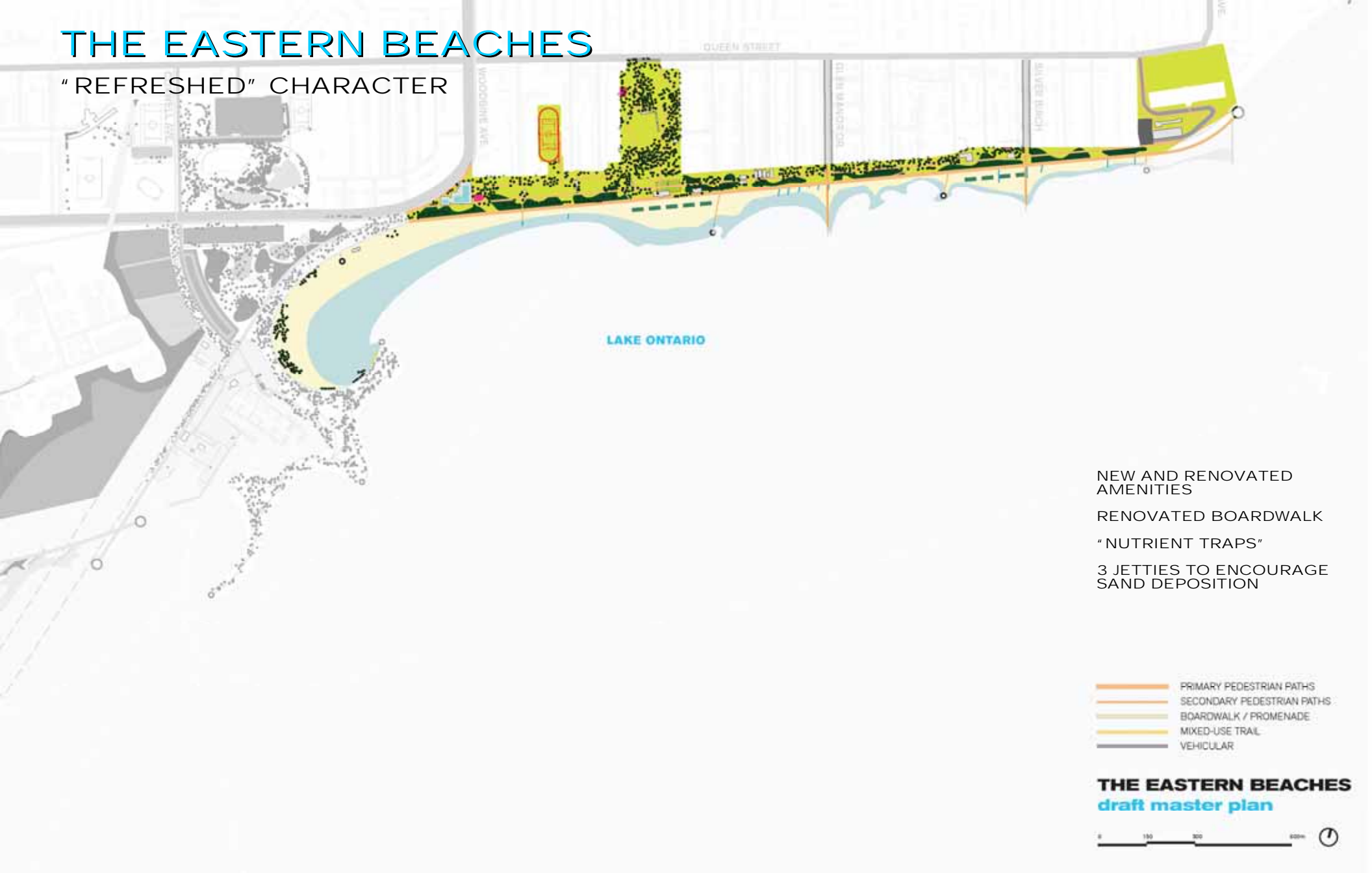


A NEW, GREEN FILTER



THE EASTERN BEACHES

"REFRESHED" CHARACTER



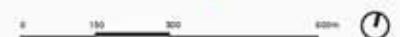
NEW AND RENOVATED AMENITIES

RENOVATED BOARDWALK

"NUTRIENT TRAPS"

3 JETTIES TO ENCOURAGE SAND DEPOSITION

THE EASTERN BEACHES
draft master plan

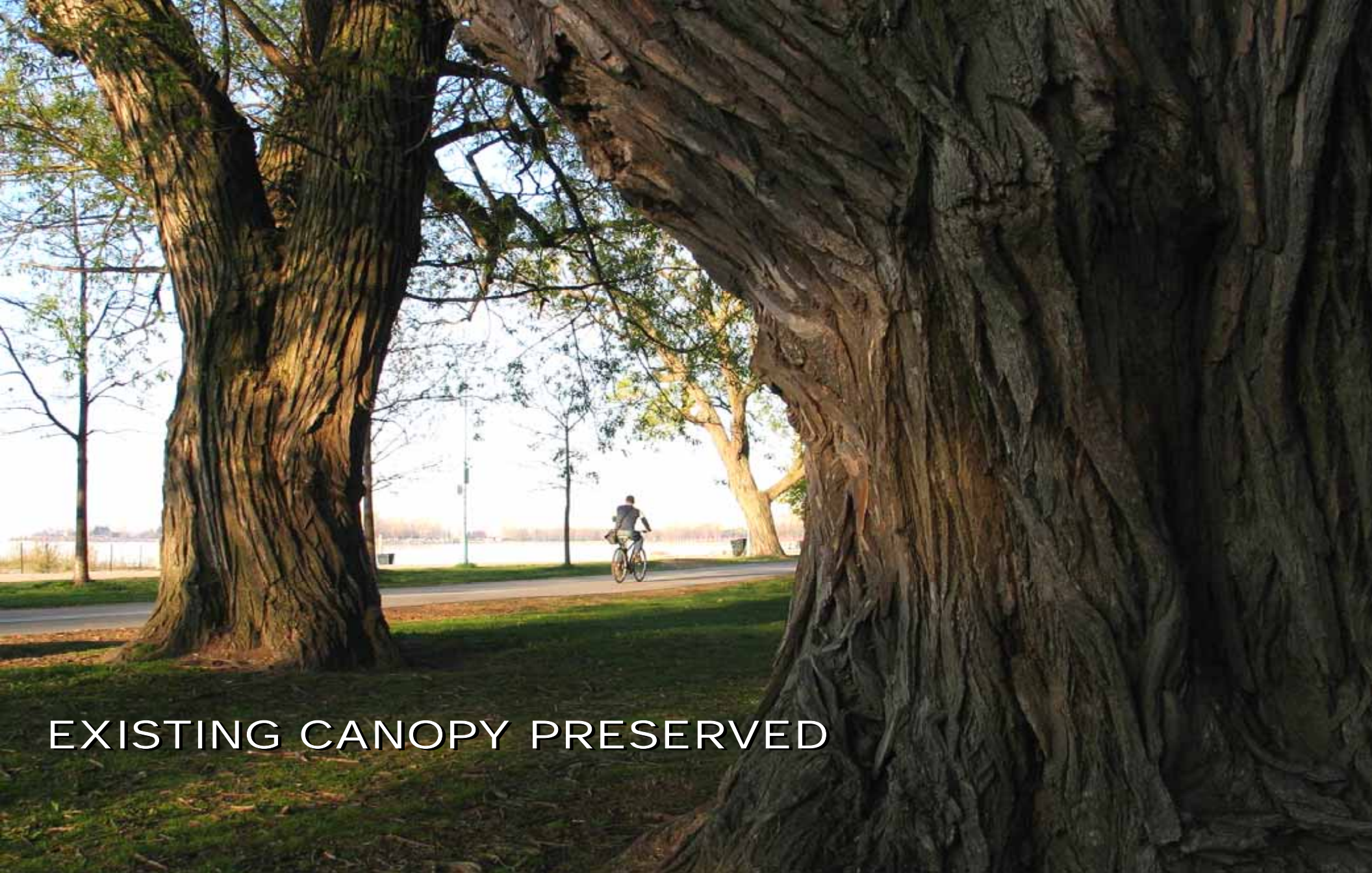




'REFRESHED' BEACHES



EXISTING USES MAINTAINED

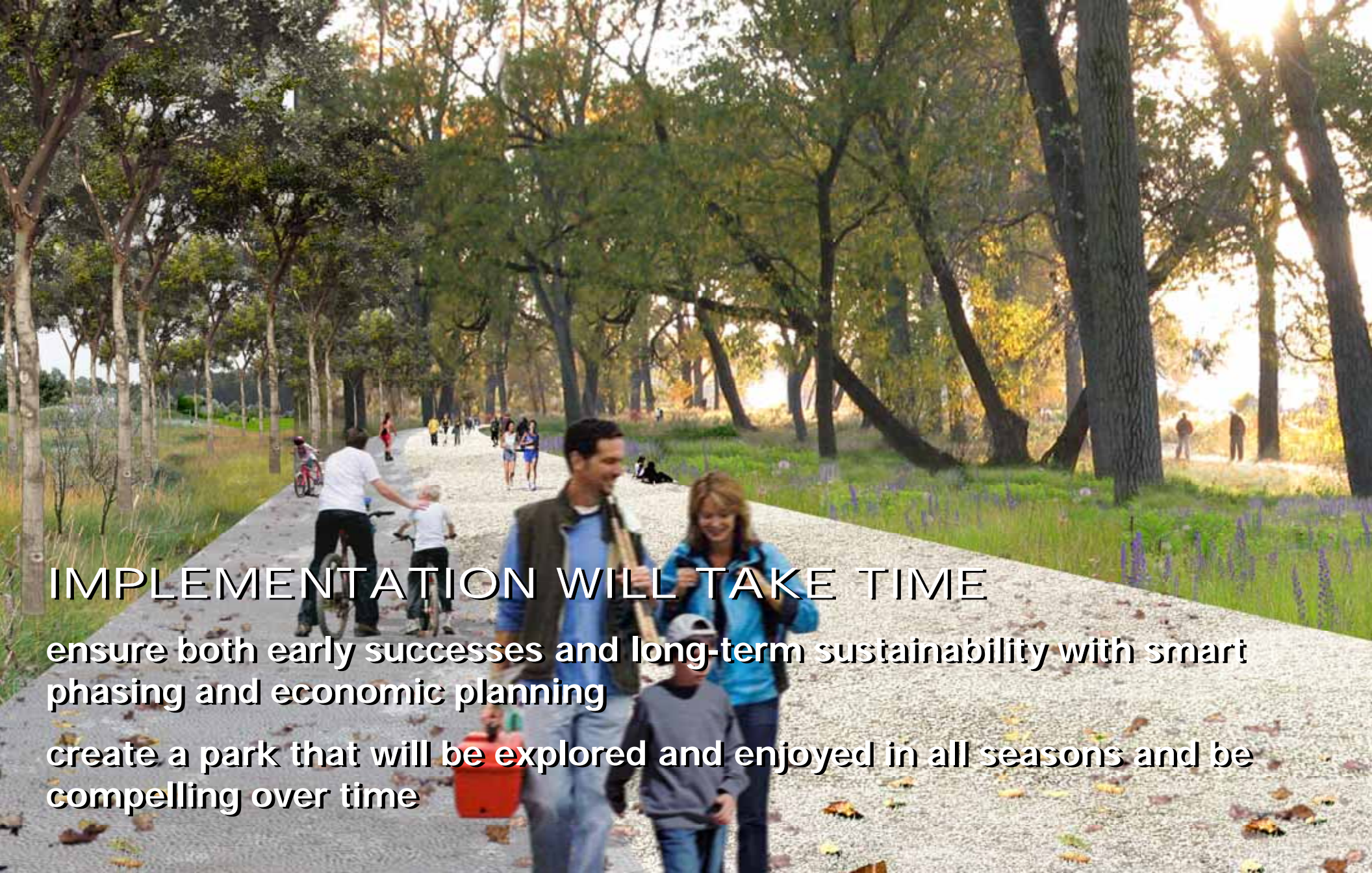


EXISTING CANOPY PRESERVED



BOARDWALK "REFRESHED"

IMPLEMENTATION



IMPLEMENTATION WILL TAKE TIME

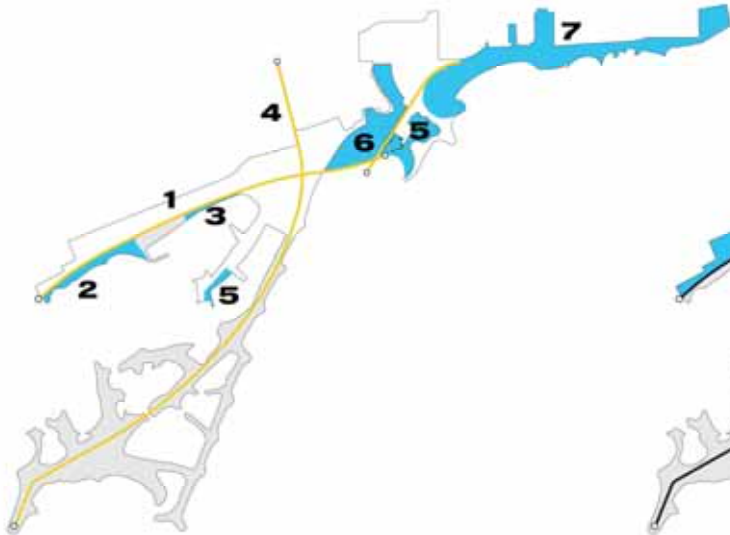
ensure both early successes and long-term sustainability with smart phasing and economic planning

create a park that will be explored and enjoyed in all seasons and be compelling over time

CONCEPTUAL PHASING

PHASE 1

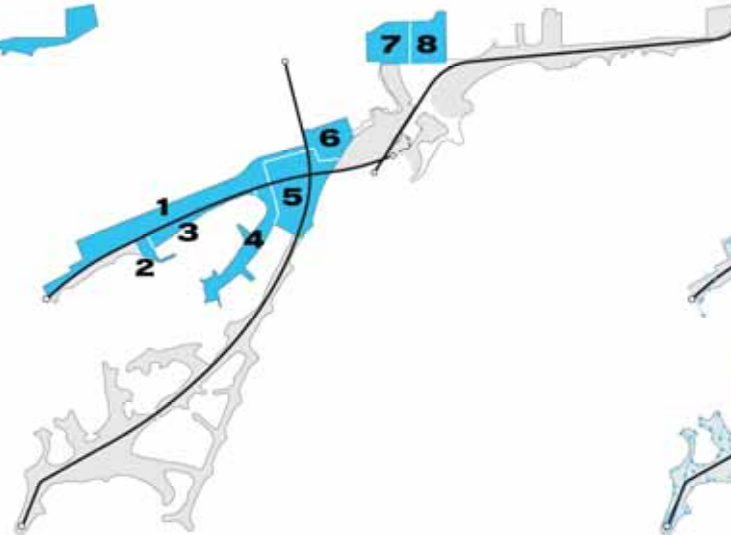
PRIORITIZE CONNECTIVITY &
REFRESH THE BEACHES



1. TRANSECTS: EASTERN GAP TO WOODBINE BEACH
2. CHERRY BEACH IMPROVEMENTS
3. NEW BEACHES AT NORTH SHORE
4. LESLIE STREET GREENING (BY OTHERS)
5. RELOCATED AND RENOVATED BOAT CLUBS
6. THE BAY WETLAND (WITH TORONTO WATER)
7. EASTERN BEACHES IMPROVEMENTS

PHASE 2

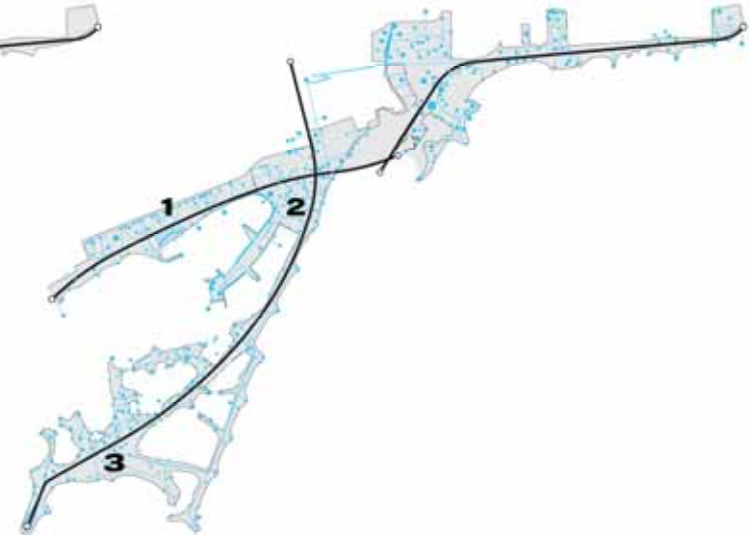
BUILD THE NEW ROOMS



1. THE BAR
2. DON GREENWAY PROMONTORY
3. THE NORTHSHORE BOAT CLUBS
4. THE MARINA PENINSULA
5. THE BASELANDS
6. SAND FILTER GARDEN (BY OTHERS)
7. PUMPHOUSE PARK (BY OTHERS)
8. PERFORMANCE ROOM AT WOODBINE PARK

PHASE 3

DEFINE NEW & EXISTING OUTPOSTS



1. NEW OUTPOSTS AND TRAILS IN THE BAR
2. NEW SIGNAGE AND WAYFINDING ELEMENTS IN THE BASELANDS
3. SIGNAGE AND OUTLOOKS IN TTP

lake ontario park
will be:

- regional greenway, lake filter and wildlife habitat



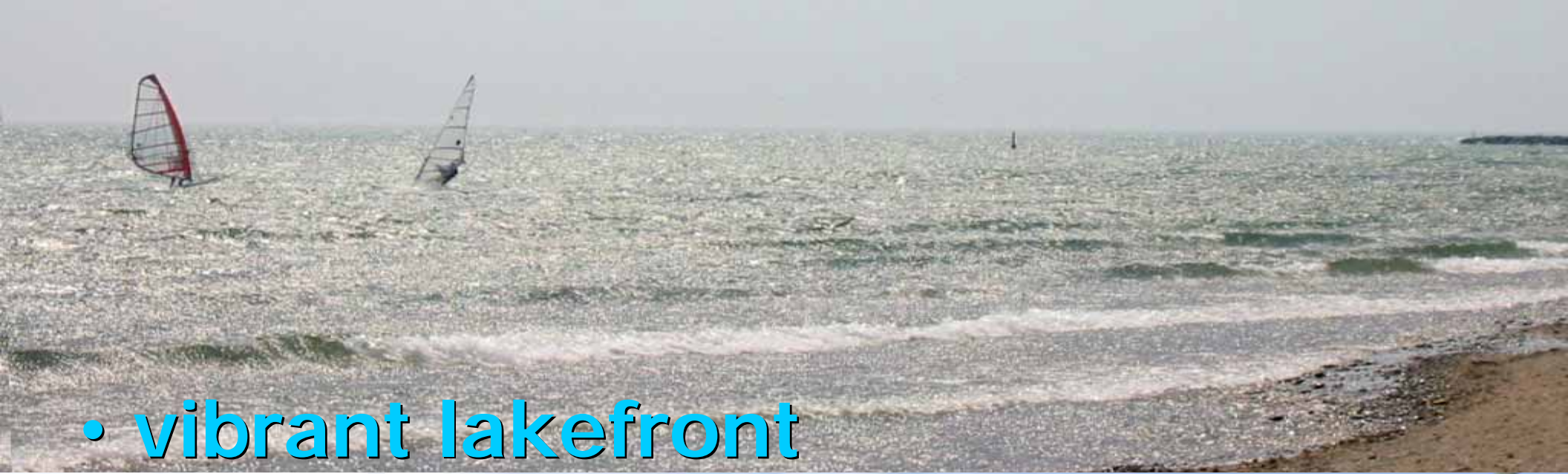


- world class, signature park for the whole city



- **wild landscapes**





• vibrant lakefront





- “big nature,” water sports, recreation and culture





NEXT STEPS FOR LOP

- 1 MASTER PLAN COMPLETION**
- 2 PHASE 1 PROJECT IDENTIFIED**
- 3 CONTINUE AGENCY, STAKEHOLDER & PUBLIC CONSULTATION**
- 4 TECHNICAL STUDIES**
- 5 PERMITTING & APPROVALS**

COMMUNICATION & FEEDBACK

waterfront toronto

416.214.1344

www.waterfronttoronto.ca

