



lake ontario park

field operations + waterfront toronto

WT Board Meeting / June 12, 2008



RECENT LOP PLANNING PROCESS

- 1 STEERING COMMITTEE**
- 2 PARKS PLANNING TEAM**
- 3 COUNCILOR REVIEW**
- 4 STAKEHOLDER ADVISORY COMMITTEE**
- 5 PUBLIC FORUM**



lake ontario park

draft master plan





LAKE ONTARIO PARK IS...



'BIG NATURE' PARKLAND

BIG SCALE RECREATION



A dramatic landscape at dusk or dawn. The foreground is dark, with silhouettes of bare trees and a dark field. The middle ground shows a line of trees, some of which are backlit by a warm, orange glow from the setting or rising sun. The sky is filled with dark, heavy clouds, with a thin layer of lighter, pinkish-orange clouds near the horizon. The overall mood is mysterious and intense.

TOUGH, SURREAL & WILD

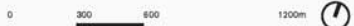
A night scene at a park with snow on the ground, people walking, and illuminated trees and structures. The scene is festive, with people in winter clothing and children in the foreground. In the background, there are trees decorated with lights and structures illuminated with blue and white lights. The overall atmosphere is bright and celebratory.

**A WORLD-CLASS
SIGNATURE PARK FOR
THE WHOLE CITY**

AREAS OF THE PARK



areas of the park
draft master plan



THE WESTERN END OF LAKE ONTARIO PARK

The Bar, extended beaches and waterfront recreation facilities, Don connection and water taxi landing



OUTER HARBOUR

- PRIMARY PEDESTRIAN PATHS
- SECONDARY PEDESTRIAN PATHS
- BOARDWALK / PROMENADE
- MIXED-USE TRAIL
- VEHICULAR

THE BAR, CHERRY BEACH AND NORTH SHORE
draft master plan





THE BAR, CHERRY BEACH AND NORTH SHORE

AN EXPANSIVE RECREATION AREA AND GREENWAY CONNECTOR THAT TIES TOGETHER THE WESTERN AREA OF THE PARK

THE MARINA PENINSULA

Public water access and views along an active recreation promenade



OUTER HARBOUR

- PRIMARY PEDESTRIAN PATHS
- SECONDARY PEDESTRIAN PATHS
- BOARDWALK / PROMENADE
- MIXED-USE TRAIL
- VEHICULAR

THE MARINA PENINSULA
draft master plan

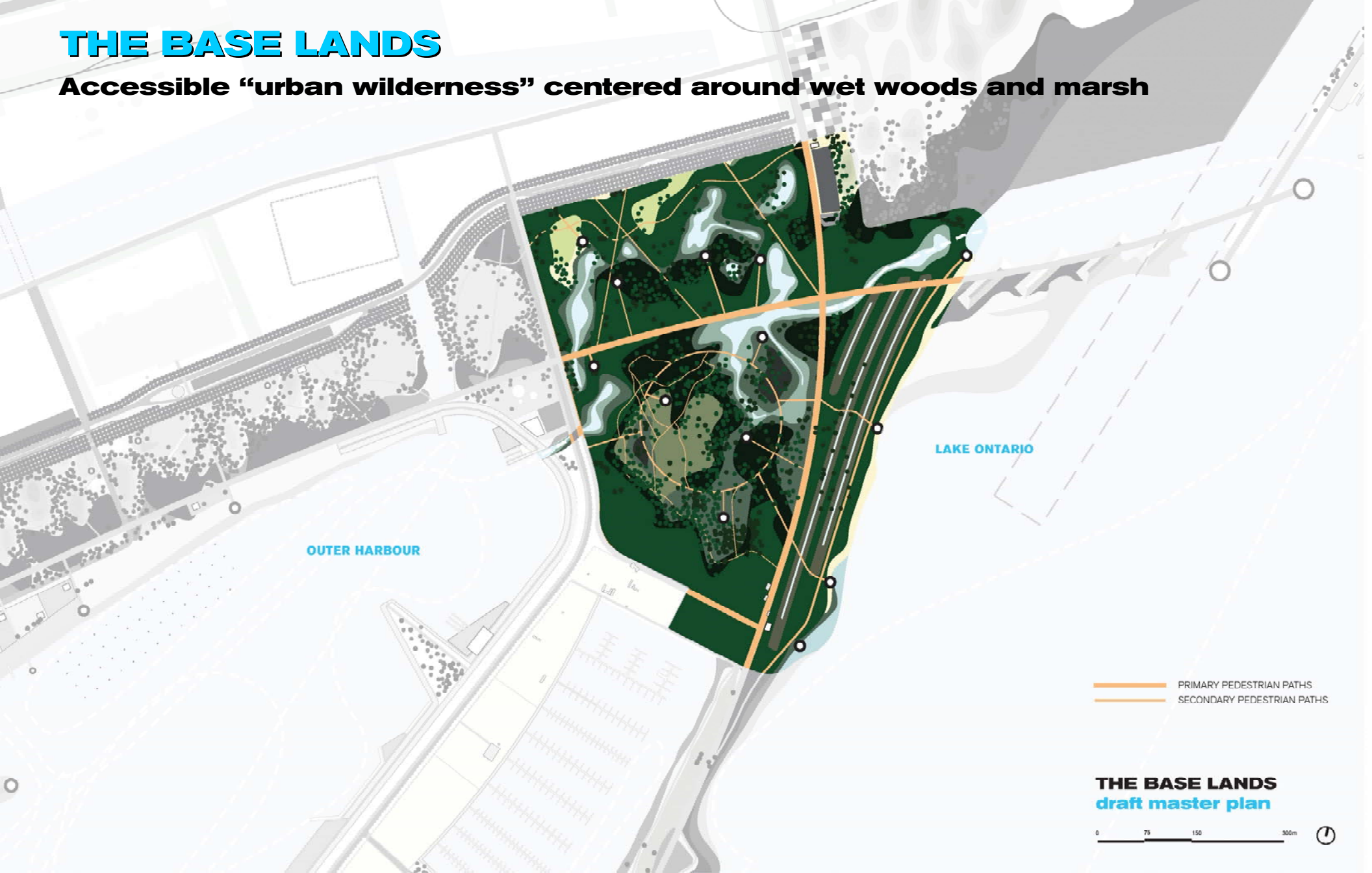




THE MARINA PENINSULA

THE BASE LANDS

Accessible “urban wilderness” centered around wet woods and marsh



OUTER HARBOUR

LAKE ONTARIO

PRIMARY PEDESTRIAN PATHS
SECONDARY PEDESTRIAN PATHS

THE BASE LANDS
draft master plan

0 75 150 300m

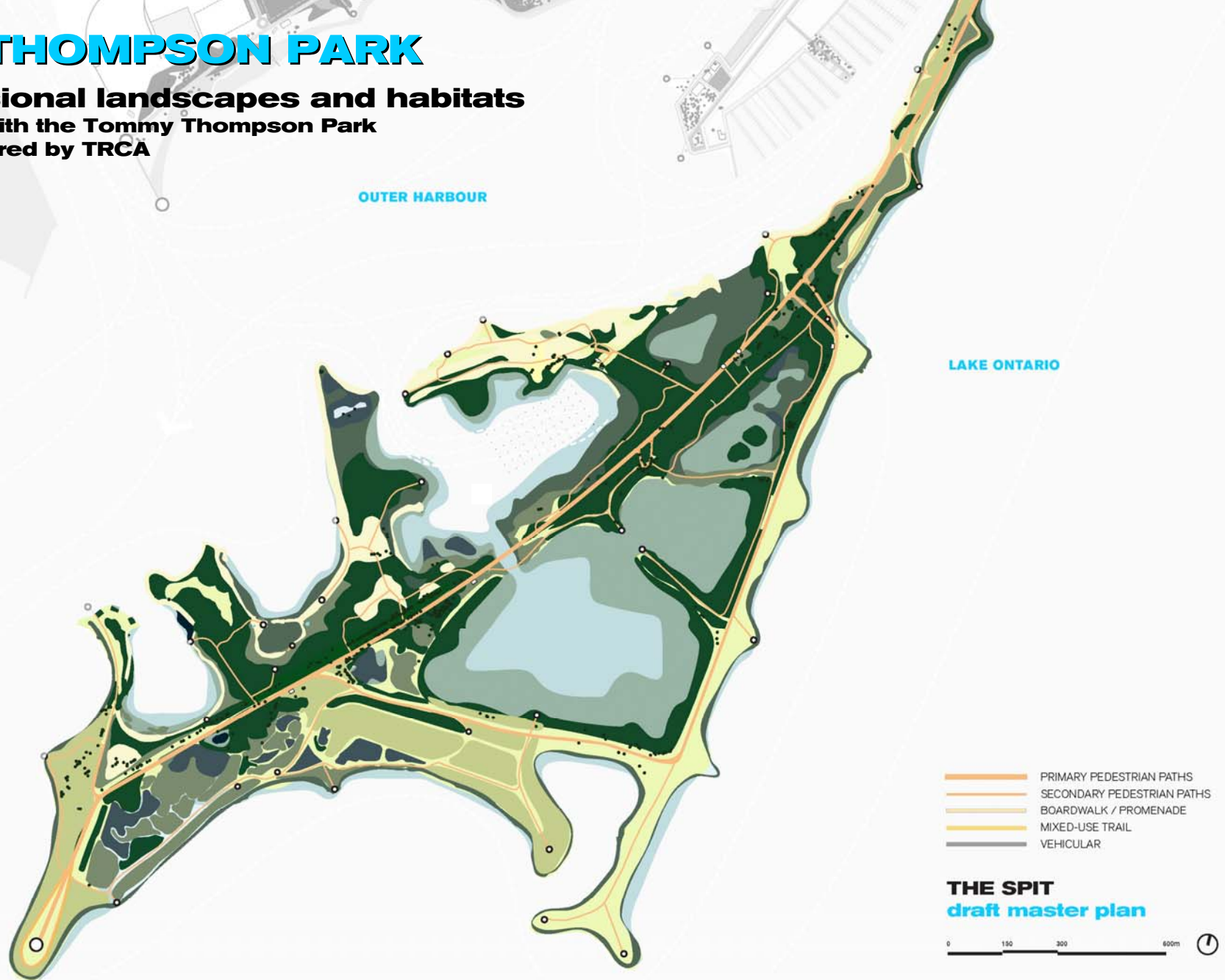




THE BASE LANDS

TOMMY THOMPSON PARK

**Wild successional landscapes and habitats
that correspond with the Tommy Thompson Park
Master Plan prepared by TRCA**

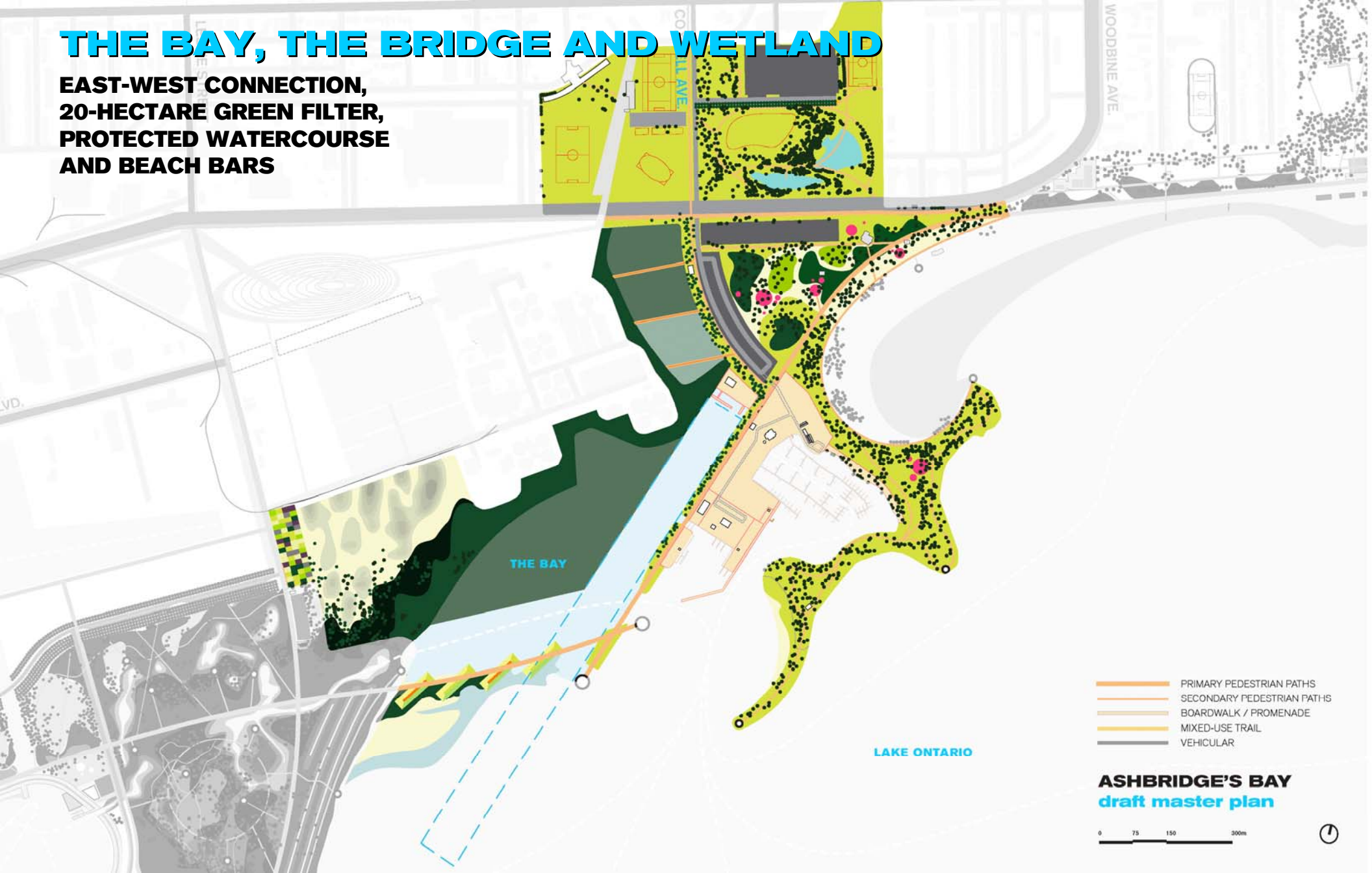




THE SPIT

THE BAY, THE BRIDGE AND WETLAND

**EAST-WEST CONNECTION,
20-HECTARE GREEN FILTER,
PROTECTED WATERCOURSE
AND BEACH BARS**



- PRIMARY PEDESTRIAN PATHS
- SECONDARY PEDESTRIAN PATHS
- BOARDWALK / PROMENADE
- MIXED-USE TRAIL
- VEHICULAR

ASHBRIDGE'S BAY
draft master plan

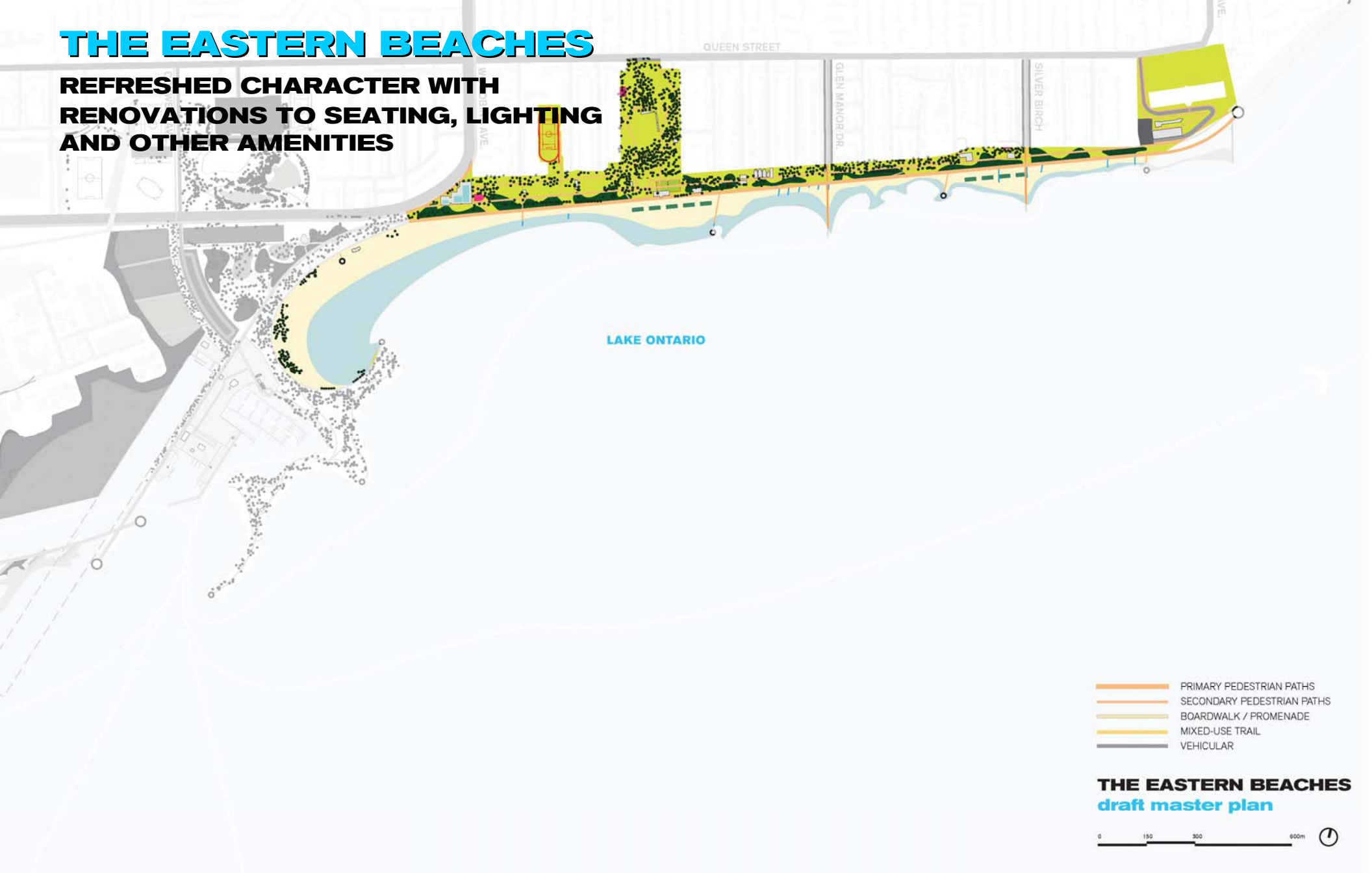




THE BAY, THE BRIDGE AND THE WETLAND

THE EASTERN BEACHES

REFRESHED CHARACTER WITH
RENOVATIONS TO SEATING, LIGHTING
AND OTHER AMENITIES



- PRIMARY PEDESTRIAN PATHS
- SECONDARY PEDESTRIAN PATHS
- BOARDWALK / PROMENADE
- MIXED-USE TRAIL
- VEHICULAR

THE EASTERN BEACHES
draft master plan





THE EASTERN BEACHES

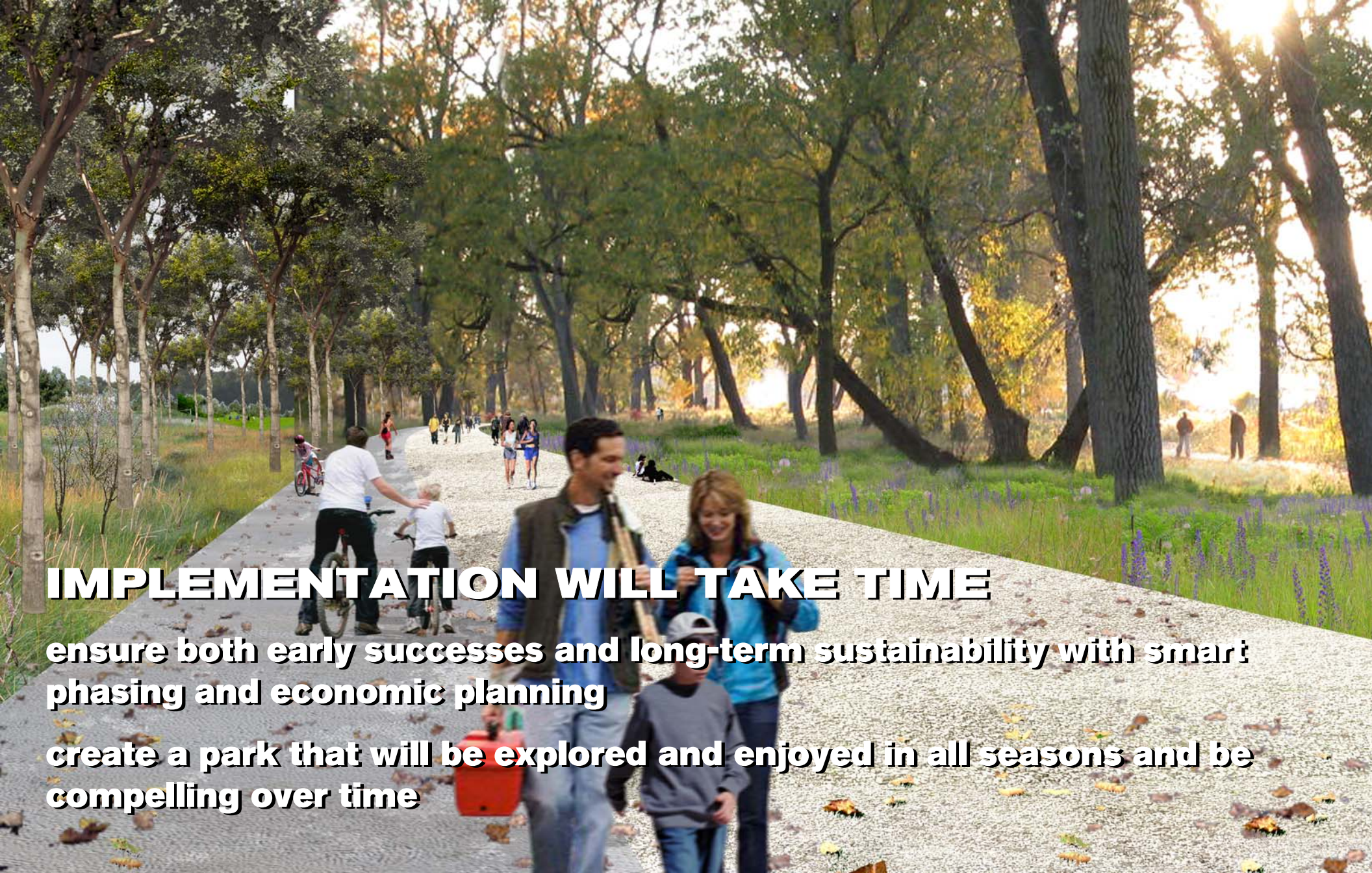


lake ontario park

draft master plan



IMPLEMENTATION



IMPLEMENTATION WILL TAKE TIME

ensure both early successes and long-term sustainability with smart phasing and economic planning

create a park that will be explored and enjoyed in all seasons and be compelling over time



THE BAR TRANSECT & EXTENDED BEACHES



NEXT STEPS FOR LOP

- 1 PUBLIC FORUM**
- 2 DRAFT MASTER PLAN COMPLETION**
- 3 PHASE 1 BUDGET REVIEW**
- 4 PHASE 1 PROJECT IDENTIFIED**