

Legend

- Sediment Management Area
- Regulatory Floodplain
- Red Path Sugar Rail Spur
- Pedestrian Boardwalk
- Pedestrian/Trail Connection
- Greenway Link
- Bridge/Crossing
- Existing Roads
- Proposed Roads
- Proposed Development Area
- Proposed Open Space/Terrestrial Habitat
- Proposed Wetland Habitat
- Proposed Aquatic Habitat
- Low Flow Channel

2

Inner Harbour

Orthomagery.2002

100 50 0 100 Meters

1:3,369

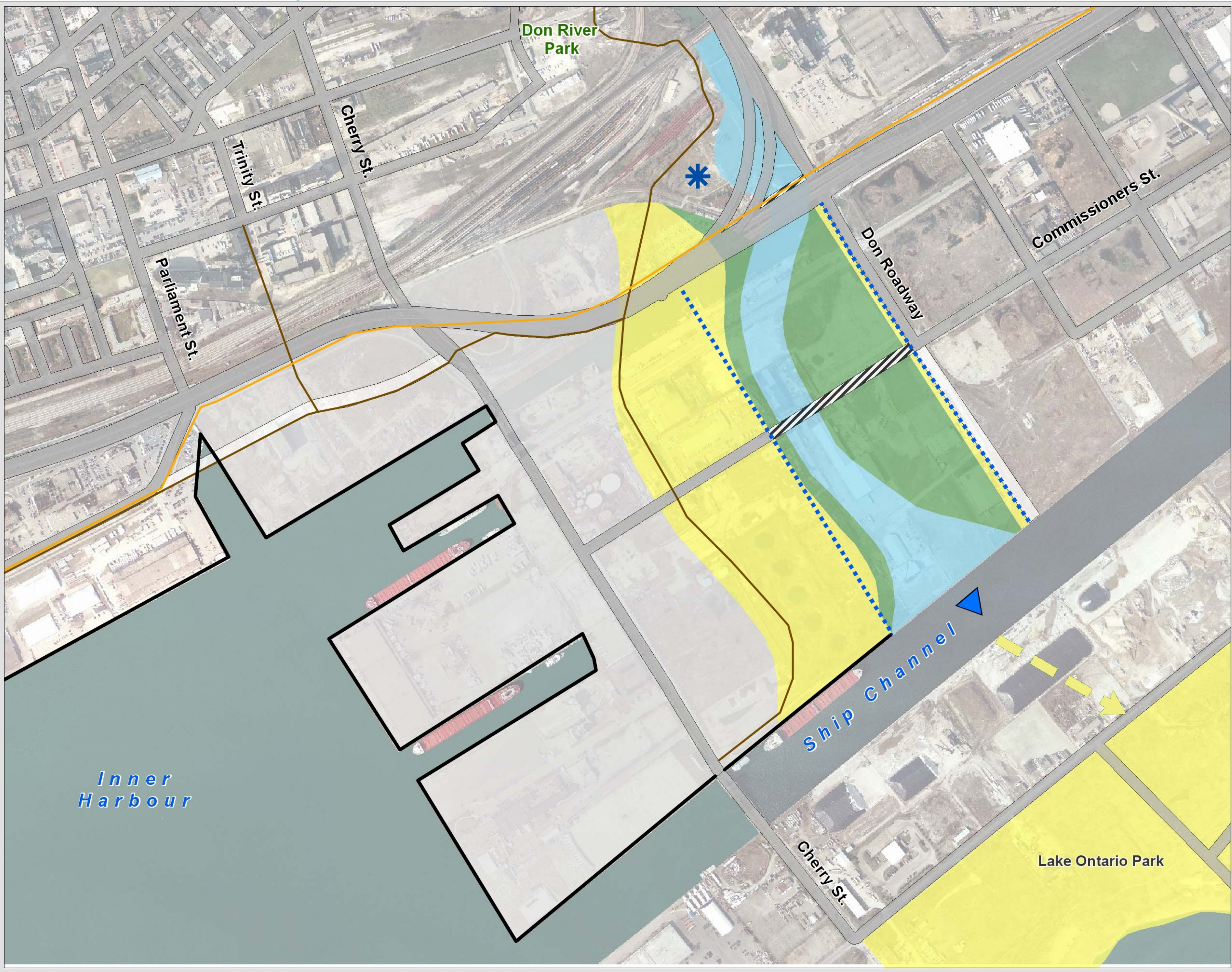
UTM Zone 17N, NAD 83

Don Mouth Naturalization and
Port Lands Flood Protection Project

Alternative 2

March 2008
Project 60822

Map Document: (N:\Projects\60822\0007\Final\GIS\Spatial\Maps\Alignments\And\Vegetation\Map\shelva\AlignmentOptions\60822\PotentialChannel\Alignment2\march.mxd)
25/02/2008 - 12:59:59 PM



Legend

- Sediment Management Area
- Regulatory Floodplain
- Red Path Sugar Rail Spur
- Pedestrian Boardwalk
- Pedestrian/Trail Connection
- Greenway Link
- Bridge/Crossing
- Existing Roads
- Proposed Roads
- Proposed Development Area
- Proposed Open Space/Terrestrial Habitat
- Proposed Wetland Habitat
- Proposed Aquatic Habitat
- Low Flow Channel

3

Ship Channel

Orthoimagery 2002

100 50 0 100 Meters

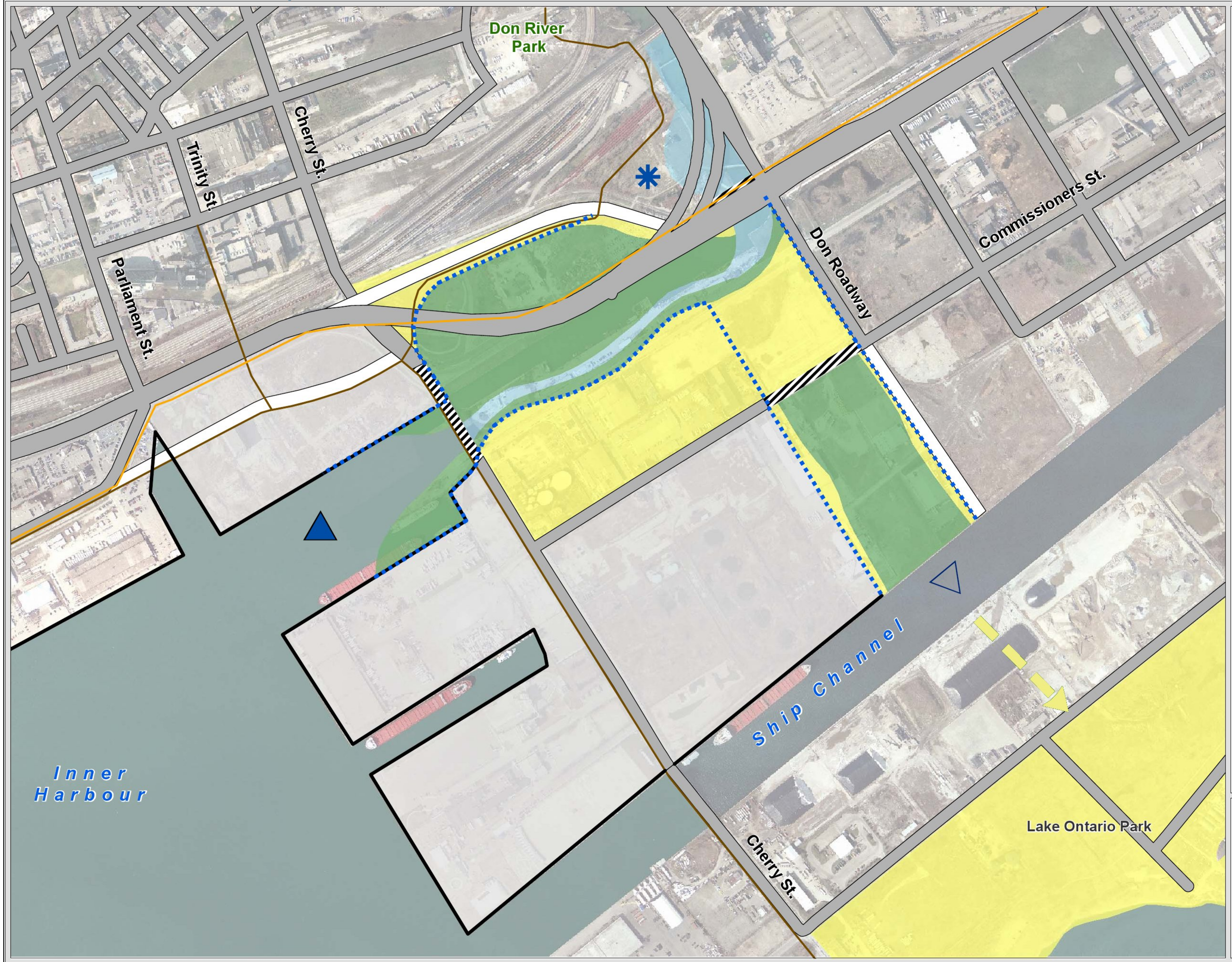
1:3,370
UTM Zone 17N, NAD 83

Don Mouth Naturalization and
Port Lands Flood Protection Project

Alternative 3

March 2008
Project 60822

Map Document: (N:\Projects\0060822\0007\Final\GIS\Spatial\Maps\Alignments\And\Vegetation\Maps\New\AlignmentOptions\60822\Potential\Channel\Alignment3.mxd) 25/11/2007 10:42:54 PM



Legend

- Sediment Management Area
- Regulatory Floodplain
- Red Path Sugar Rail Spur
- Pedestrian Boardwalk
- Pedestrian/Trail Connection
- Greenway Link
- Bridge/Crossing
- Existing Roads
- Proposed Roads
- Proposed Development Area
- Proposed Open Space/Terrestrial Habitat
- Proposed Wetland Habitat
- Proposed Aquatic Habitat
- Low Flow Channel
- Spillway



Orthoimagery 2002

100 50 0 100 Meters

1:3,370

UTM Zone 17N, NAD 83

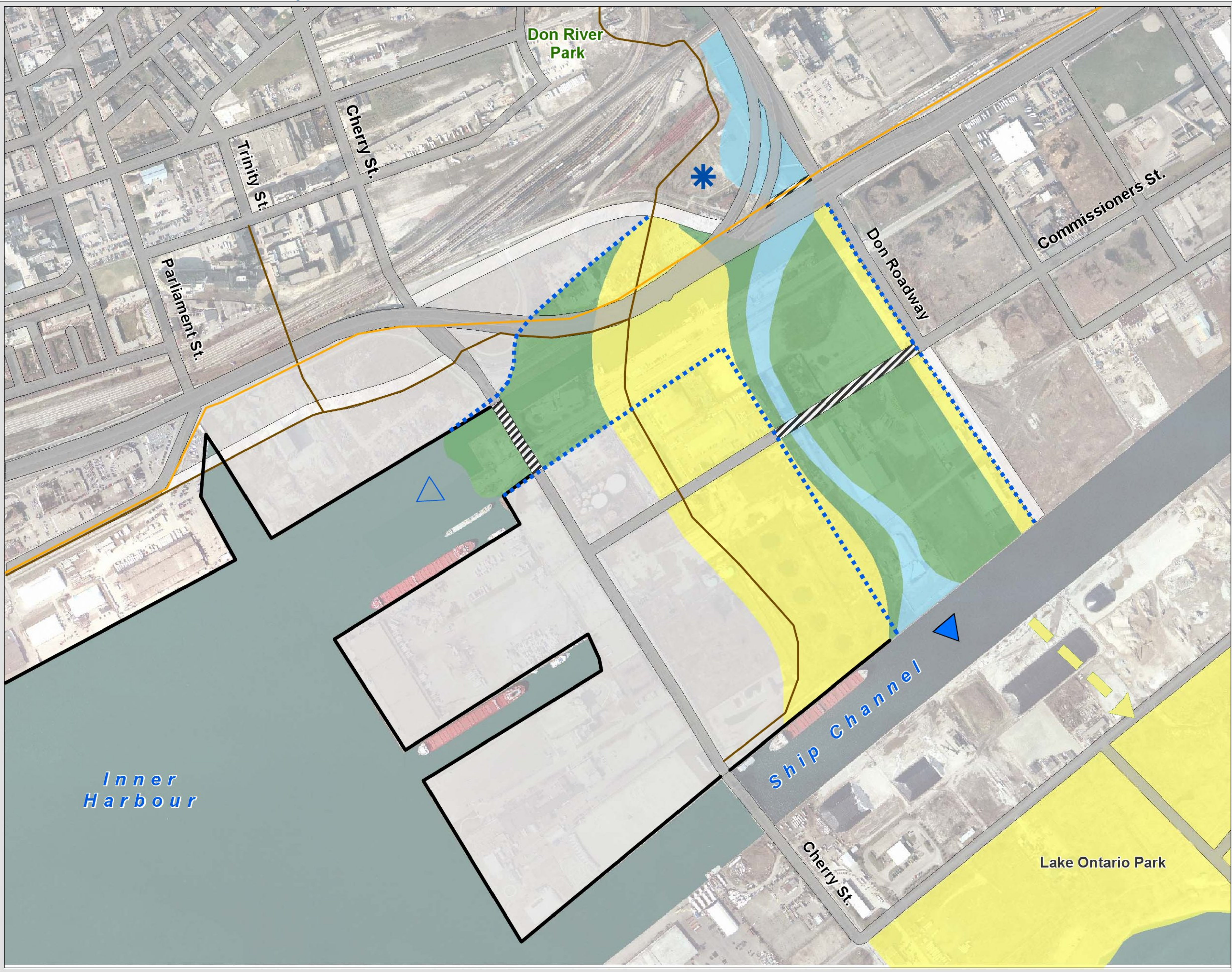
Don Mouth Naturalization and
Port Lands Flood Protection Project

Alternative 4W

March 2008
Project 60822

Map Document: (N:\Projects\0660822\007\Final\GIS\Spatial\Maps\Alignments\And\Vegetation\Map\New\AlignmentOptions\60822\PotentialChannel\AlignmenC.mxd) 2/11/2007 -- 6:01:35 PM

Don Mouth Naturalization And Port Lands Flood Protection Project



Legend

- Sediment Management Area
- Regulatory Floodplain
- Red Path Sugar Rail Spur
- Pedestrian Boardwalk
- Pedestrian/Trail Connection
- Greenway Link
- Bridge/Crossing
- Existing Roads
- Proposed Roads
- Proposed Development Area
- Proposed Open Space/Terrestrial Habitat
- Proposed Wetland Habitat
- Proposed Aquatic Habitat
- Low Flow Channel
- Spillway

4S

Primary Flow to Ship Channel

Orthoimagery 2002

100 50 0 100 Meters

1:3,370
UTM Zone 17N, NAD 83

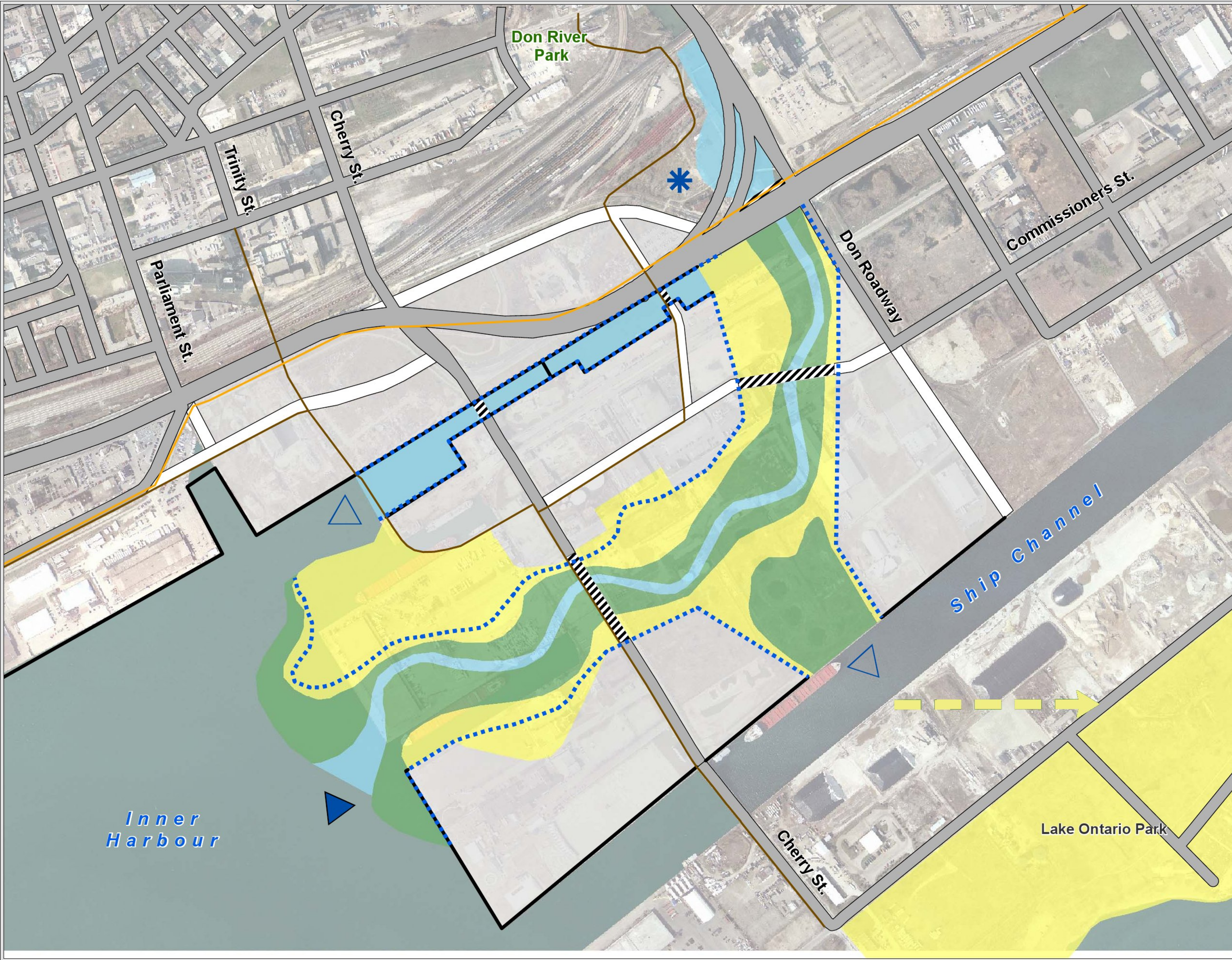
Don Mouth Naturalization and Port Lands Flood Protection Project

Alternative 4S

March 2008
Project 60822

Map Document: (N:\Projects\60822\007\Final\GIS\Spatial\Maps\Alignments\and\Vegetation\Maps\New\AlignmentOptions\60822\PotentialChannelAlignment\Smar.ch.mxd) 25/02/2008 - 12:50:01 PM

Don Mouth Naturalization And Port Lands Flood Protection Project



- Legend**
- Sediment Management Area
 - Regulatory Floodplain
 - Red Path Sugar Rail Spur
 - Pedestrian Boardwalk
 - Pedestrian/Trail Connection
 - Greenway Link
 - Bridge/Crossing
 - Existing Roads
 - Proposed Roads
 - Proposed Development Area
 - Proposed Open Space/Terrestrial Habitat
 - Proposed Wetland Habitat
 - Proposed Aquatic Habitat
 - Low Flow Channel
 - Spillway



Primary Flow To Inner Harbour

Orthoimagery:2002



100 50 0 100 Meters

1:3,446
UTM Zone 17N, NAD 83

Don Mouth Naturalization and Port Lands Flood Protection Project

Alternative 4WS

March 2008
Project 60822

Map Document: (N:\Projects\006\60822\007\Final\GIS\patial\MapAlignmentsAndVegetation\MapstNew\AlignmentOptions\60822\PotentialChannelAlignment4WS.mxd) 25/07/2008 - 1:00:43 PM

Criteria Based Summary of Comparative Evaluation for Step 4



Objective	Criteria	Alt #2	Alt #3	Alt #4W	Alt #4S	Alt #4WS
Naturalization	Total naturalized area	Least preferred	Moderately preferred	Most preferred	Most preferred	Most preferred
	Area of wetland habitat types created	Least preferred	Moderately preferred	Moderately preferred	Most preferred	Moderately preferred
	Area of open space/terrestrial habitat	Least preferred	Moderately preferred	Least preferred	Most preferred	Most preferred
	Potential for negative and/or beneficial effect on wildlife species or communities (i.e., minimizing disturbance)	Least preferred	Most preferred	Most preferred	Most preferred	Most preferred
	Potential for negative and/or beneficial effects on native fish habitat or aquatic communities	Moderately preferred	Moderately preferred	Least preferred	Least preferred	Most preferred
	Potential for hydraulics and hydrology to affect sustainability of vegetation communities and associated fauna.	Least preferred	Least preferred	Moderately preferred	Moderately preferred	Most preferred
	Potential to maintain and improve connection for aquatic species	Most preferred	Least preferred	Most preferred	Least preferred	Most preferred
	Quality of habitat types created	Least preferred	Moderately preferred	Moderately preferred	Moderately preferred	Most preferred
	Potential for negative and/or beneficial effect on wildlife species or communities (i.e., connecting habitat)	Least preferred	Moderately preferred	Least preferred	Moderately preferred	Most preferred
Objective Summary		Least preferred	Least preferred	Moderately preferred	Moderately preferred	Most preferred
Flood Protection	Potential to impact flooding conditions elsewhere	Least preferred	Least preferred	Most preferred	Most preferred	Most preferred
	Potential for sediment to affect flooding and conveyance of flow	Least preferred	Least preferred	Most preferred	Most preferred	Most preferred
	Ability to accommodate potential changes in extreme precipitation and water flow resulting from climate change	Least preferred	Least preferred	Most preferred	Most preferred	Most preferred
Objective Summary		Least preferred	Least preferred	Most preferred	Most preferred	Most preferred
Operational Management and Constructability	Potential to phase implementation of river modifications	Least preferred	Most preferred	Least preferred	Moderately preferred	Moderately preferred
	Accessibility of river mouth for operational management (i.e., dredge, barge, etc.)	Most preferred	Most preferred	Least preferred	Least preferred	Least preferred
	Potential for adverse effects/ improvements to Port operations and shipping	Most preferred	Least preferred	Most preferred	Least preferred	Least preferred
	Annual operation and maintenance costs	Most preferred	Most preferred	Least preferred	Least preferred	Least preferred
Objective Summary		Most preferred	Most preferred	Moderately preferred	Least preferred	Least preferred
Integration with Infrastructure	Potential for changes to existing, planned and proposed roads solely due to DMNP	Moderately preferred	Most preferred	Least preferred	Least preferred	Moderately preferred
	Potential need for new bridges	Most preferred	Moderately preferred	Least preferred	Least preferred	Moderately preferred
	Modifications required to accommodate surface transit	Most preferred	Moderately preferred	Least preferred	Least preferred	Least preferred
	Potential for changes to existing rail lines or yards or access roads leading to rail yards	Least preferred	Moderately preferred	Least preferred	Least preferred	Most preferred
	Potential for changes to existing, planned and proposed underground utilities	Moderately preferred	Most preferred	Least preferred	Least preferred	Least preferred
	Potential for modifications to dock walls	Most preferred	Least preferred	Least preferred	Least preferred	Least preferred
	Potential for changes to existing above ground utilities	Most preferred	Moderately preferred	Moderately preferred	Moderately preferred	Least preferred
Objective Summary		Most preferred	Most preferred	Least preferred	Least preferred	Moderately preferred



Objective	Criteria	Alt #2	Alt #3	Alt #4W	Alt #4S	Alt #4WS
Recreational and Cultural Opportunities	Potential for effect from construction on archaeological resources	Least preferred	Moderately preferred	Least preferred	Least preferred	Most preferred
	Potential for changes to use of river mouth for boating	Most preferred	Most preferred	Least preferred	Least preferred	Least preferred
	Potential to negatively or positively affect recreational boating in the Inner Harbour	Most preferred	Least preferred	Most preferred	Least preferred	Moderately preferred
	Opportunity to enhance/degrade existing and proposed pedestrian/cycling linkages with and between waterfront areas and the rest of the city	Moderately preferred	Least preferred	Moderately preferred	Moderately preferred	Most preferred
	Potential to provide functional linkages to Martin Goodman Trail	Most preferred	Least preferred	Moderately preferred	Least preferred	Most preferred
	Potential for displacement from construction of naturalized area on built heritage resources	Most preferred	Least preferred	Least preferred	Least preferred	Least preferred
Objective Summary		Most preferred	Moderately preferred	Moderately preferred	Least preferred	Most preferred
Coordination with Other Planning Efforts	Consistency with the intent of the Central Waterfront Secondary Plan	Moderately preferred	Least preferred	Moderately preferred	Moderately preferred	Most preferred
	Potential for nuisance effects on the planned and proposed surrounding community	Most preferred	Moderately preferred	Least preferred	Moderately preferred	Moderately preferred
	Land outside of regulatory floodplain available for development	Most Preferred	Moderately preferred	Moderately preferred	Least Preferred	Moderately preferred
	Amenity value created by river and naturalized areas	Least preferred	Least preferred	Moderately preferred	Moderately preferred	Most preferred
	Ability of location of river to support transit utilization	Most preferred	Moderately preferred	Moderately preferred	Least preferred	Moderately preferred
	Walkability - ability to create pedestrian connectivity between and within neighbourhoods	Least preferred	Least preferred	Least preferred	Least preferred	Most Preferred
	Potential to provide vistas to the downtown skyline	Least preferred	Least preferred	Moderately preferred	Least preferred	Most preferred
Objective Summary		Moderately preferred	Least preferred	Moderately preferred	Least preferred	Most preferred
Consistency with Waterfront Toronto Sustainability Framework	Potential for disturbance of contaminated soils	Least preferred	Most preferred	Least preferred	Least preferred	Moderately preferred
	Ability to manage contaminated soils and groundwater	Least preferred	Most preferred	Least preferred	Least preferred	Least preferred
	Physical constraints imposed by existing soil and groundwater contamination	Least preferred	Moderately preferred	Moderately preferred	Most preferred	Most preferred
	Cost of management of groundwater and soil contamination	Most preferred	Least preferred	Least preferred	Most preferred	Most preferred
Objective Summary		Moderately preferred	Most preferred	Least preferred	Most preferred	Most preferred

Criteria Based Summary of Comparative Evaluation for Step 4



Objective	Alt #2	Alt #3	Alt #4W	Alt #4S	Alt #4WS
Naturalization	Least preferred	Least preferred	Moderately preferred	Moderately preferred	Most preferred
Flood Protection	Least preferred	Least preferred	Most preferred	Most preferred	Most preferred
Operational Management and Constructability	Most preferred	Most preferred	Moderately preferred	Least preferred	Least preferred
Integration with Infrastructure	Most preferred	Most preferred	Least preferred	Least preferred	Moderately preferred
Recreational and Cultural Opportunities	Most preferred	Moderately preferred	Moderately preferred	Least preferred	Most preferred
Coordination with Other Planning Efforts	Moderately preferred	Least preferred	Moderately preferred	Least preferred	Most preferred
Consistency with Waterfront Toronto Sustainability Framework	Moderately preferred	Most preferred	Least preferred	Most preferred	Most preferred
Summary	Moderately preferred	Moderately preferred	Moderately preferred	Least preferred	Most preferred