



December 4, 2007

**DRAFT**

For Stakeholder Advisory  
Committee Review only

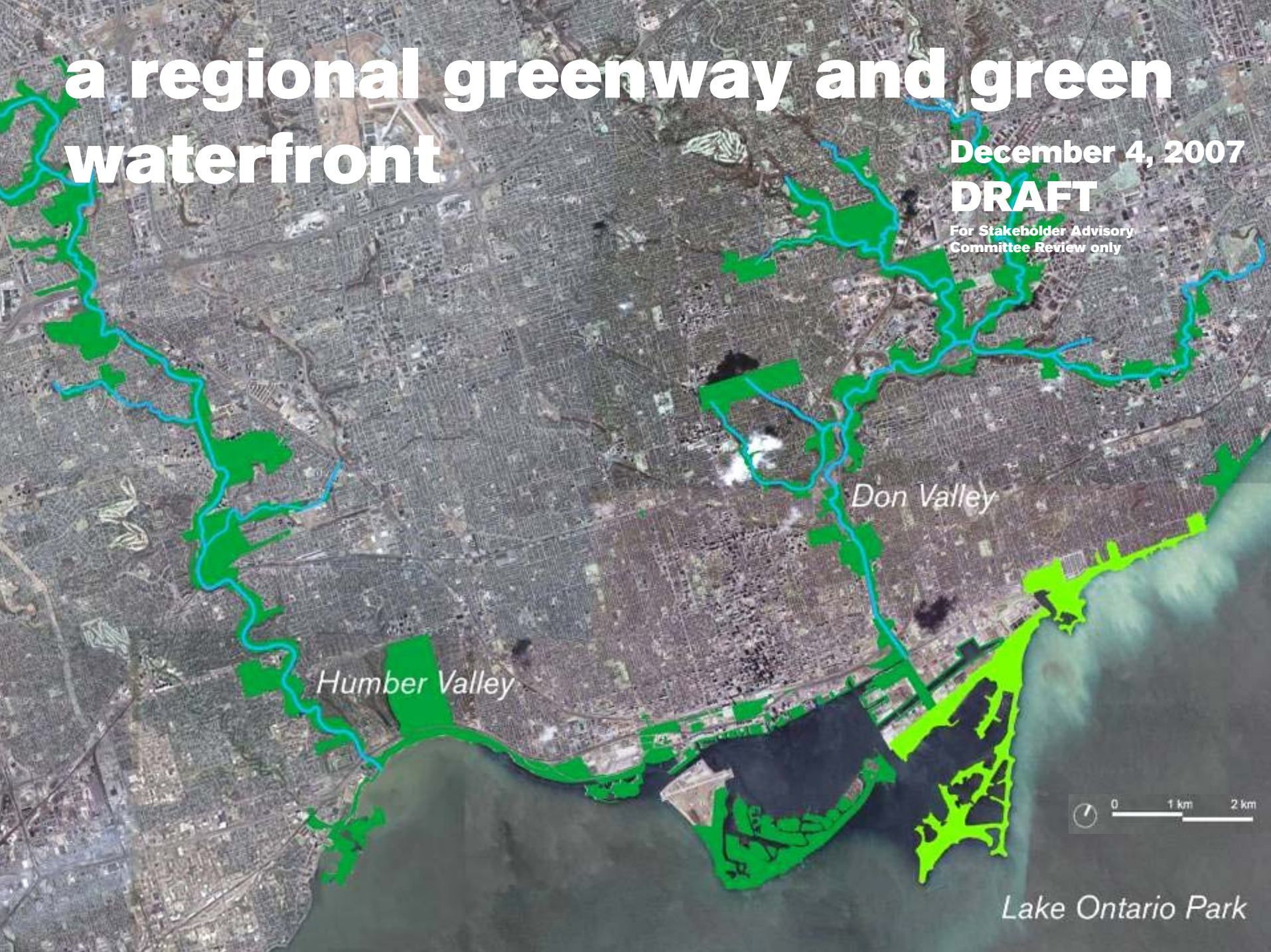
**lake ontario park**



# a regional greenway and green waterfront

December 4, 2007  
**DRAFT**

For Stakeholder Advisory  
Committee Review only



*Humber Valley*

*Don Valley*



*Lake Ontario Park*

**organizing ideas:**

**transects and outposts,**

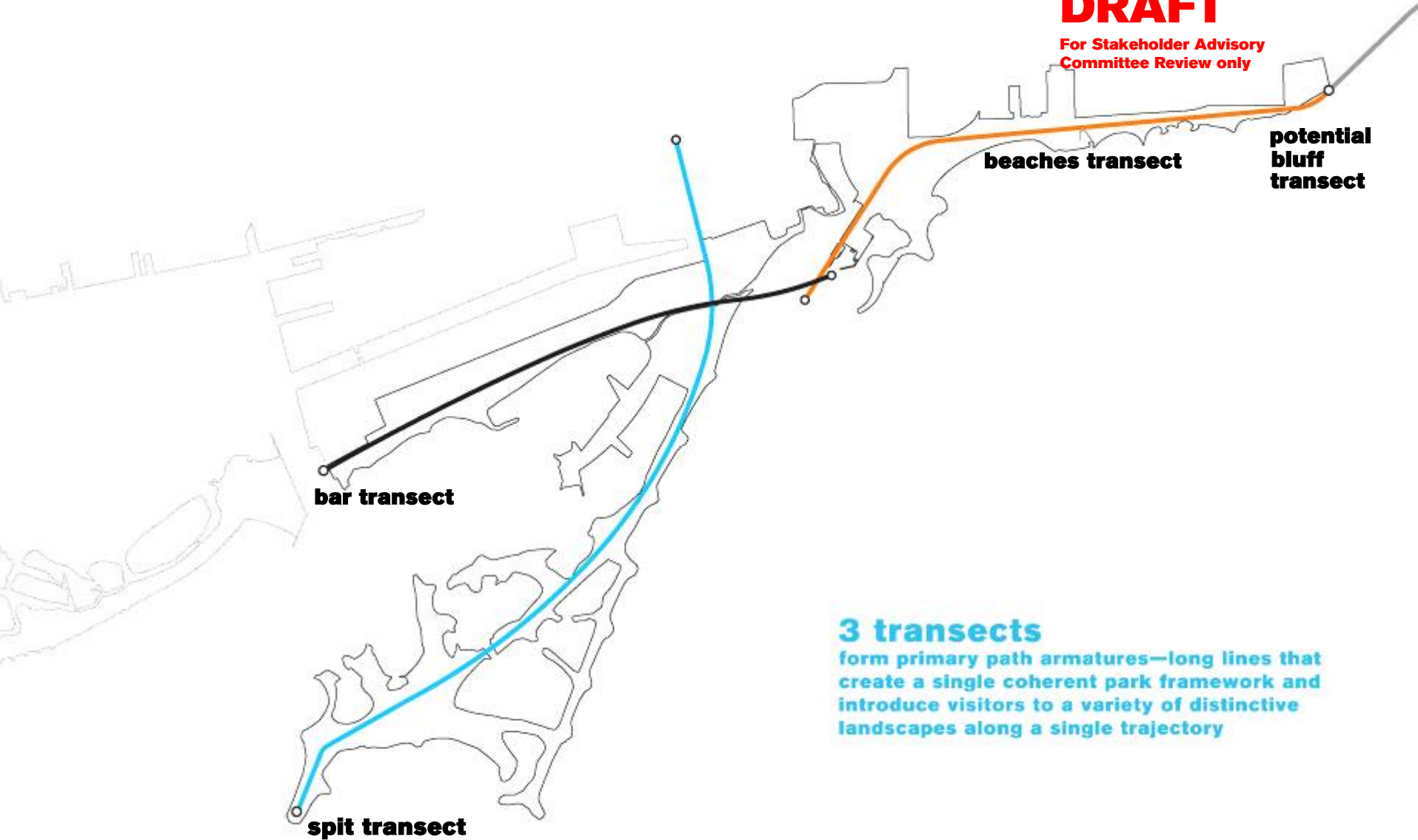
**the bar and the bay**



**December 4, 2007**

**DRAFT**

For Stakeholder Advisory  
Committee Review only



**bar transect**

**spit transect**

**beaches transect**

**potential  
bluff  
transect**

**3 transects**

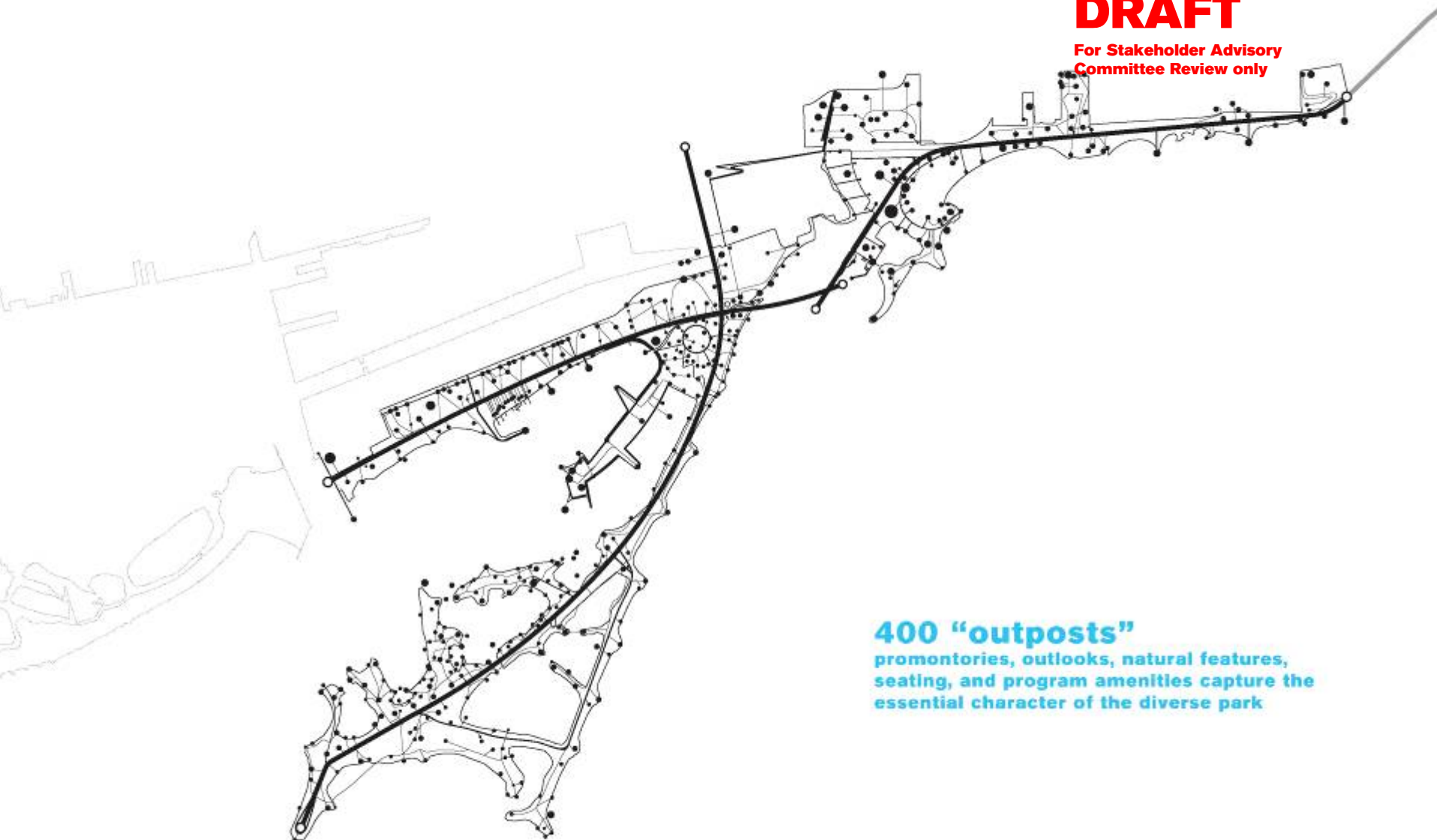
form primary path armatures—long lines that create a single coherent park framework and introduce visitors to a variety of distinctive landscapes along a single trajectory



**December 4, 2007**

**DRAFT**

**For Stakeholder Advisory  
Committee Review only**



**400 "outposts"**

**promontories, outlooks, natural features,  
seating, and program amenities capture the  
essential character of the diverse park**



**December 4, 2007**

**DRAFT**

**For Stakeholder Advisory  
Committee Review only**



**the bar**

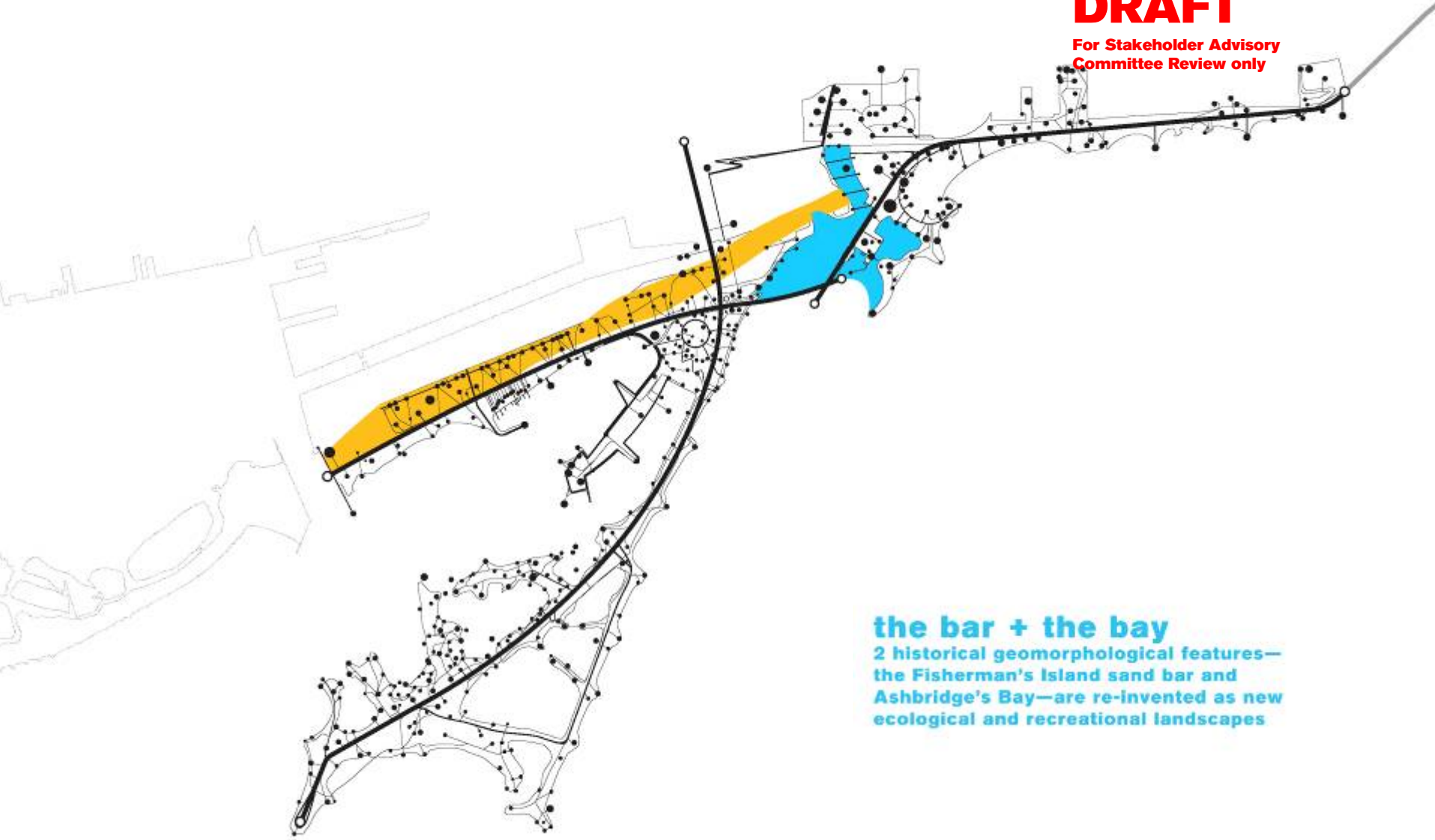
forms the western threshold of the park  
built mostly on man-made land



**December 4, 2007**

**DRAFT**

**For Stakeholder Advisory  
Committee Review only**



**the bar + the bay**

**2 historical geomorphological features—  
the Fisherman's Island sand bar and  
Ashbridge's Bay—are re-invented as new  
ecological and recreational landscapes**



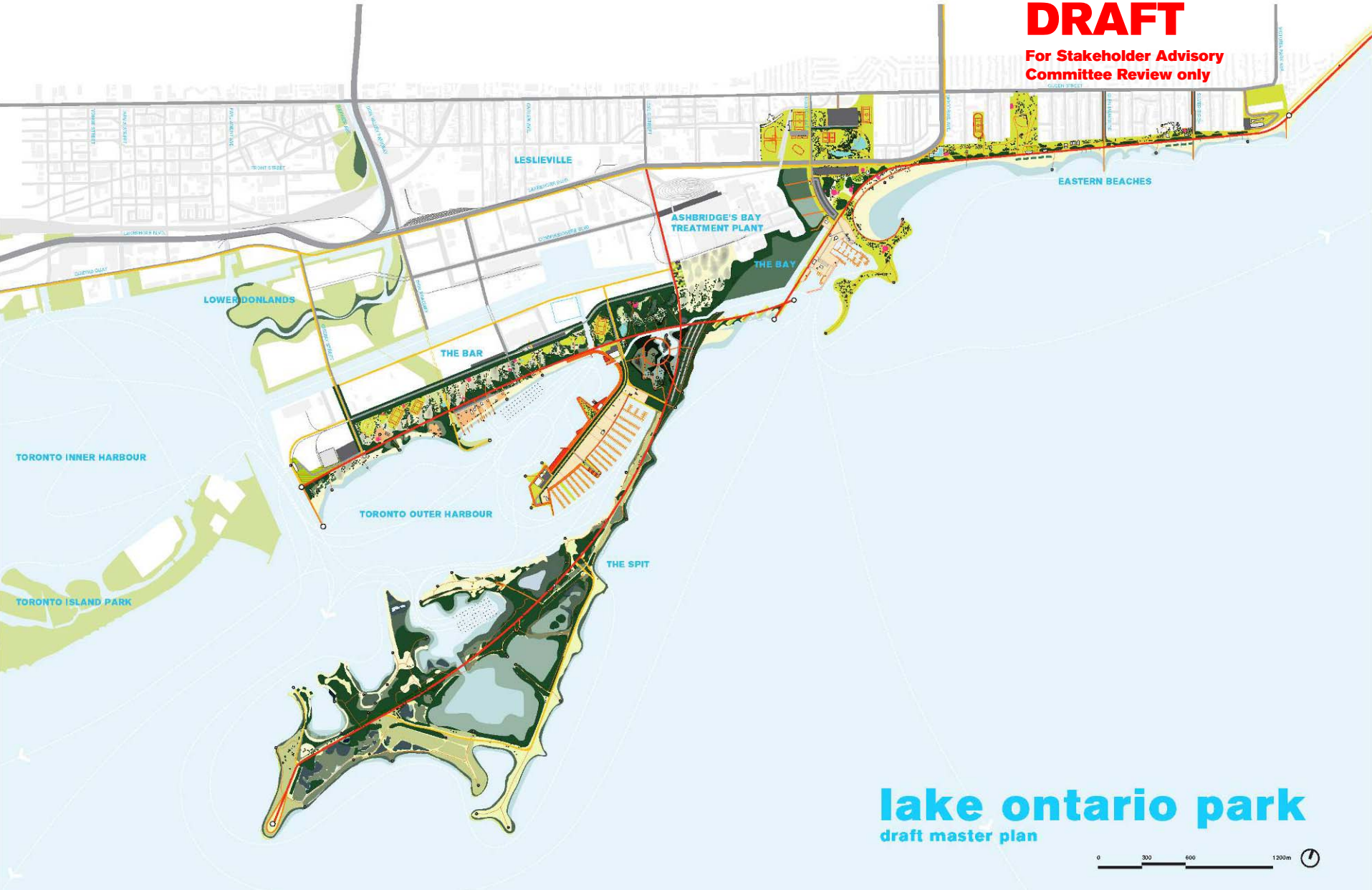
**draft master plan**



**December 4, 2007**

**DRAFT**

**For Stakeholder Advisory  
Committee Review only**



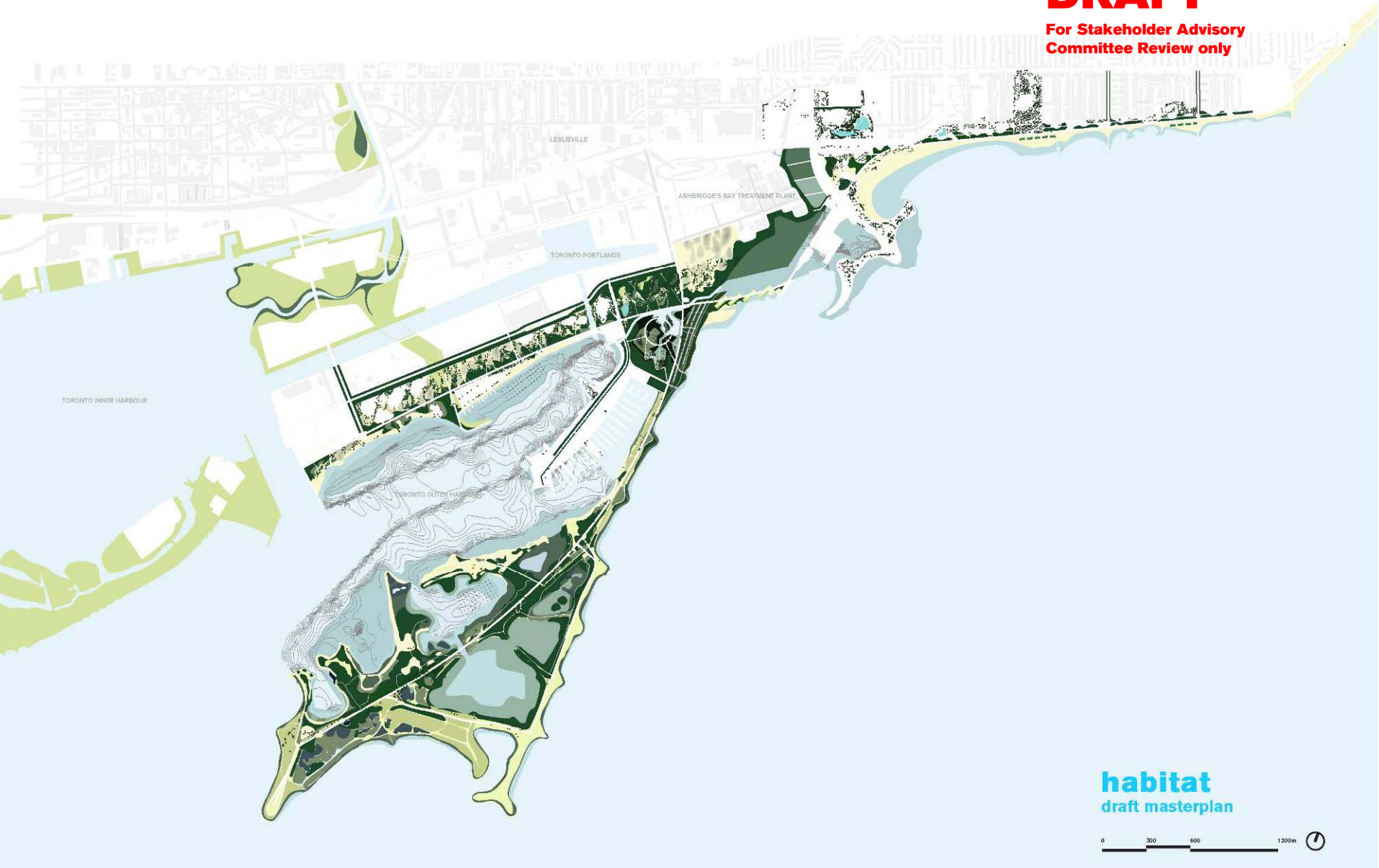
**lake ontario park**  
draft master plan



**December 4, 2007**

**DRAFT**

**For Stakeholder Advisory  
Committee Review only**



**habitat**  
draft masterplan





**December 4, 2007**

**DRAFT**

**For Stakeholder Advisory  
Committee Review only**



**legend**

-  EXISTING CANOPY
-  PROPOSED CANOPY

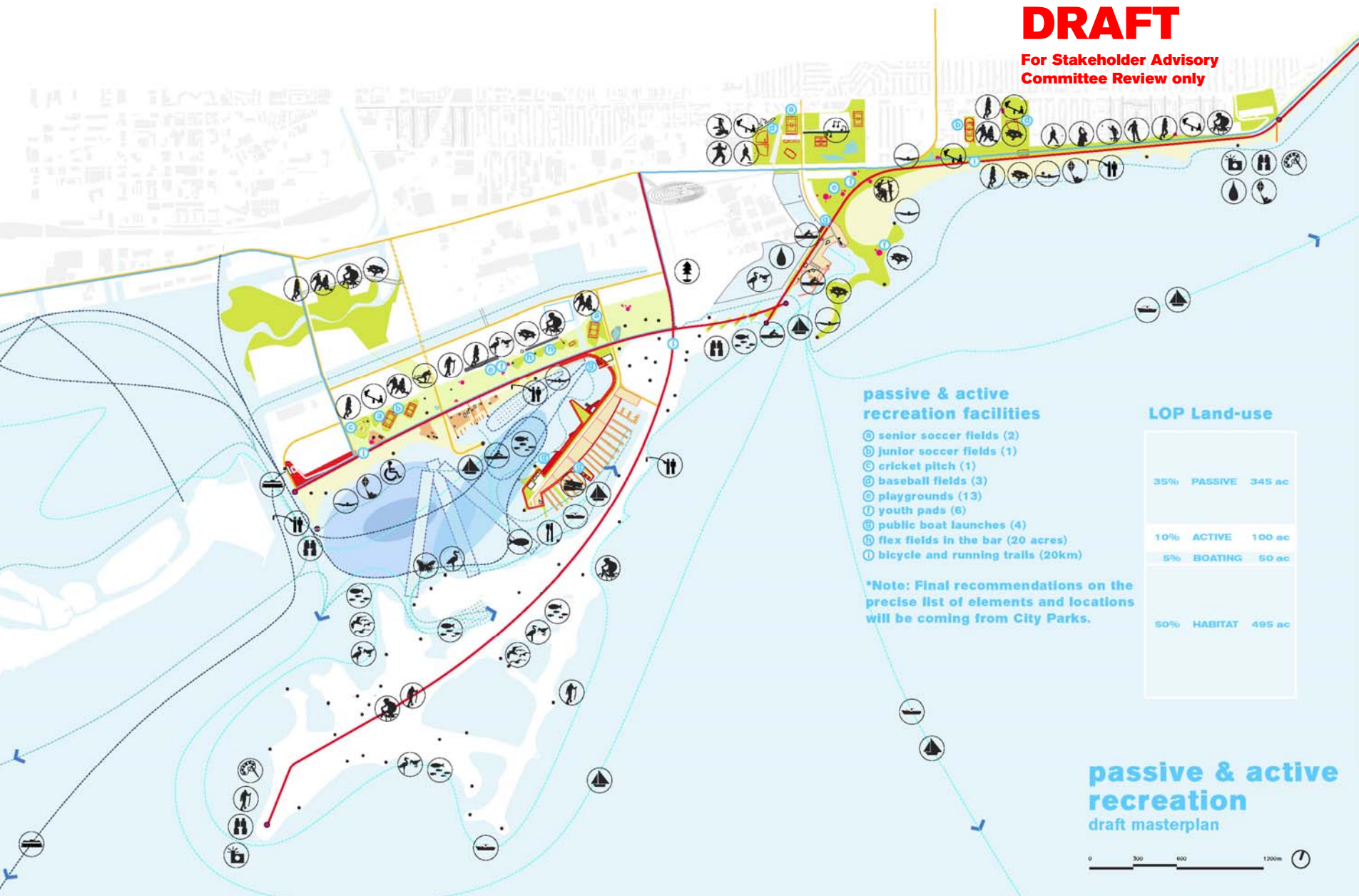
**canopy  
draft masterplan**



December 4, 2007

**DRAFT**

For Stakeholder Advisory  
Committee Review only



**passive & active  
recreation facilities**

- ⓐ senior soccer fields (2)
- ⓑ junior soccer fields (1)
- ⓒ cricket pitch (1)
- ⓓ baseball fields (3)
- ⓔ playgrounds (13)
- ⓕ youth pads (6)
- ⓖ public boat launches (4)
- ⓗ flex fields in the bar (20 acres)
- ⓘ bicycle and running trails (20km)

\*Note: Final recommendations on the precise list of elements and locations will be coming from City Parks.

**LOP Land-use**

35%	PASSIVE	345 ac
10%	ACTIVE	100 ac
5%	BOATING	50 ac
50%	HABITAT	495 ac

**passive & active  
recreation  
draft masterplan**





**December 4, 2007**

**DRAFT**

**For Stakeholder Advisory  
Committee Review only**

**PASSIVE**

**ACTIVE**

**BOATING**

**50% HABITAT**

**APPROX. 495 acres**

- **Wetlands**
- **Successional Meadows**
- **Deciduous Forest**
- **Swamp Forest**
- **Nesting Sites**



**December 4, 2007**

**DRAFT**

**For Stakeholder Advisory  
Committee Review only**

**35% PASSIVE**

**APPROX. 345 acres**

ACTIVE

BOATING

HABITAT

- **Open lawn areas**
- **Open meadow areas**
- **Paths, trails, boardwalks and piers**
- **Playgrounds**
- **Beaches**

**December 4, 2007**

**DRAFT**

**For Stakeholder Advisory  
Committee Review only**

- **Sport Fields**
- **Multi-use Fields**
- **Multi-use Trails**

PASSIVE

**10% ACTIVE**  
APPROX. **100 acres**  
BOATING

HABITAT





**December 4, 2007**

# **DRAFT**

**For Stakeholder Advisory  
Committee Review only**

- **Boat clubs**
- **Boat launches**
- **Boat docks**
- **Kayak & canoe landings**

PASSIVE

ACTIVE

**5% BOATING**  
**APPROX. 50 acres**

HABITAT







the bar

# Western End of Lake Ontario Park

The Bar, new beach and waterfront recreation facilities, Don connection and water taxi landing

**December 4, 2007**  
**DRAFT**

**For Stakeholder Advisory  
Committee Review only**



- ① EASTERN GAP LANDING AND PROMONTORY
- ② WATER-TAXI LANDING
- ③ CHERRY ST. GATEWAY / FIRST NATIONS SITE
- ④ DON GREENWAY
- ⑤ LONG-TERM RELOCATED SPORTS FIELDS
- ⑥ MULTI-USE OPEN FIELD
- ⑦ DON GREENWAY PROMONTORY
- ⑧ SAIL AND WINDSURF CLUBS
- ⑨ PUBLIC BEACH FRONT
- ⑩ FISHING PIER AND PICNIC AREAS
- ⑪ HEARN
- ⑫ PORTLANDS ENERGY CENTRE (PROPOSED)
- ⑬ ADVENTURE CENTRE
- ⑭ ALLOTMENT GARDENS
- ⑮ ABTP DUNES

- PRIMARY PEDESTRIAN PATHS:
- SECONDARY PEDESTRIAN PAT
- BOARDWALK / PROMENADE
- MIXED-USE TRAIL
- VEHICULAR

**THE BAR, CHERRY BEACH AND  
NORTH SHORE**  
draft masterplan





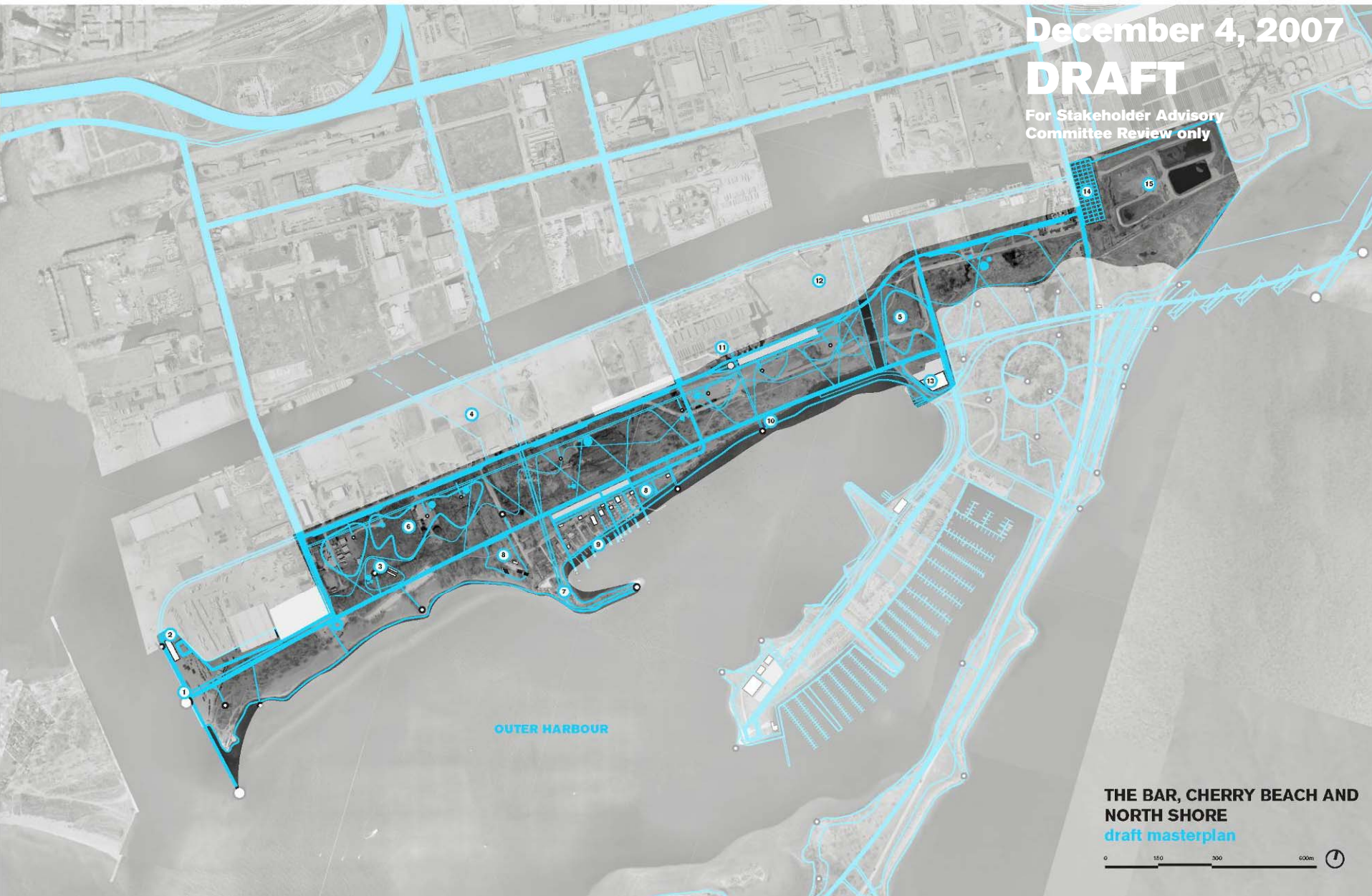
# Western End of Lake Ontario Park

The Bar, new beach and waterfront recreation facilities, Don connection and water taxi landing

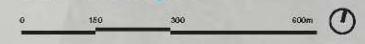
December 4, 2007

**DRAFT**

For Stakeholder Advisory  
Committee Review only



**THE BAR, CHERRY BEACH AND  
NORTH SHORE**  
draft masterplan



**December 4, 2007**

**DRAFT**

**For Stakeholder Advisory  
Committee Review only**



UNWIN AVENUE WITH  
HEAD-IN PARKING

THE BAR HILLFORMS AND HOLLOW

TRANSECT

100m  
FISHERMAN'S ISLAND SANDBAR

0 5 10 25 meters

**December 4, 2007**

**DRAFT**

**For Stakeholder Advisory  
Committee Review only**

# **Change in context as the Port Lands become a major mixed-use urban centre**

- **240 hectares of new development**
- **new community of 40,000 residents**
- **retail, office and commercial development**
- **major changes in the Central Waterfront, lower Don Valley, and other areas adjacent to the park**



**December 4, 2007**

**DRAFT**

**For Stakeholder Advisory  
Committee Review only**

# **Creative response to soil contamination**

- **some contamination is serious, some is easily contained or improved**
- **Current, reliable environmental information for Cherry Beach, North Shore and the Base Lands is scarce**
- **WT is fast-tracking a thorough characterization of soils in these areas**
- **soil improvement strategies can then become detail design drivers and park features**

# large-scale recreation:

**cycling,  
running, walking / hiking,  
cross country skiing,  
skating**

**December 4, 2007**

**DRAFT**

**For Stakeholder Advisory  
Committee Review only**





**December 4, 2007**

**DRAFT**

**For Stakeholder Advisory  
Committee Review only**

# **large-scale nature:**

**ecological diversity,  
natural process / dynamism,  
restoration and conservation,  
water quality improvement,  
wildlife habitat / flyway station  
education, birding / tracking**





**December 4, 2007**

**DRAFT**

**For Stakeholder Advisory  
Committee Review only**

**byxbee park**

**palo alto, ca**

**December 4, 2007**

**DRAFT**

For Stakeholder Advisory  
Committee Review only



**byxbee park**

**palo alto, ca**



**December 4, 2007**

**DRAFT**

**For Stakeholder Advisory  
Committee Review only**



**crissy field**

**san francisco, ca**



# the bar landscape

conceptual design response to isolated levels of soil contamination

December 4, 2007

**DRAFT**

For Stakeholder Advisory  
Committee Review only



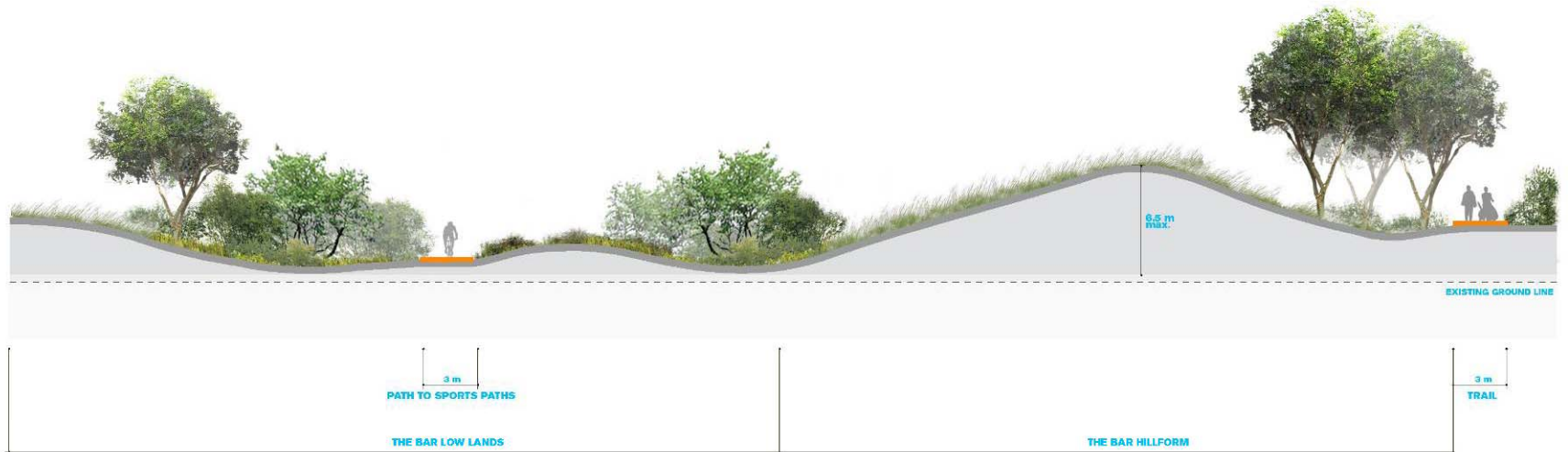
# the bar landscape

conceptual design response to isolated levels of soil contamination

December 4, 2007

**DRAFT**

For Stakeholder Advisory  
Committee Review only



## SPECIES (TYP.)

Amelanchier laevis, Serviceberry  
Betula papyrifera, Paper Birch  
Populus deltoides, Cottonwood  
Populus grandidentata, Large-toothed Aspen  
Populus tremuloides, Quaking aspen  
Prunus serotina, Black Cherry  
Prunus virginiana, Choke Cherry  
Quercus alba, White Oak  
Salix exigua, Sandbar Willow  
Salix humilis, Upland Willow

## SPECIES (TYP.)

Agrostis scabra, Ticklegrass  
Ammophila breviligulata, American Beach Grass  
Andropogon scoparius, Big bluestem  
Elymus canadensis, Canada wild-rye  
Panicum virgatum, Switch grass  
Schizachyrium scoparium, Little bluestem  
Sorghastrum nutans, Indian grass  
Sporobolus cryptandus, Hidden dropseed  
Spartina pectinata, Fresh water cordgrass





# the bar landscape

conceptual design response to high levels of soil contamination

December 4, 2007

**DRAFT**

For Stakeholder Advisory  
Committee Review only





# the bar landscape

conceptual design response to high levels of soil contamination

December 4, 2007

**DRAFT**

For Stakeholder Advisory  
Committee Review only



## SPECIES (TYP.)

*Bouteloua curtipendula*, Side-oats Grama  
*Bouteloua gracilis*, Blue Gramma  
*Festuca rubra* ssp. *arenaria*, Creeping Red Fescue  
*Festuca longifolia*, Hard Fescue  
*Festuca rubra commutata*, Chewings Fescue  
*Lolium perenne*, Perennial Ryegrass  
*Schizachyrium scoparium*, Little Bluestem  
*Sporobolus heterolepis*, Sandrop Seed

## SPECIES (TYP.)

*Amelanchier laevis*, Serviceberry  
*Betula papyrifera*, Paper Birch  
*Populus deltoides*, Cottonwood  
*Populus grandidentata*, Large-toothed Aspen  
*Populus tremuloides*, Quaking aspen  
*Prunus serotina*, Black Cherry  
*Prunus virginiana*, Choke Cherry  
*Quercus alba*, White Oak  
*Salix exigua*, Sandbar Willow  
*Salix humilis*, Upland Willow

## SPECIES (TYP.)

*Agrostis scabra*, Ticklegrass  
*Ammophila breviligulata*, American Beach Grass  
*Andropogon scoparius*, Big bluestem  
*Elymus canadensis*, Canada wild-rye  
*Panicum virgatum*, Switch grass  
*Schizachyrium scoparium*, Little bluestem  
*Sorghastrum nutans*, Indian grass  
*Sporobolus cryptandus*, Hidden dropseed  
*Spartina pectinata*, Fresh water cordgrass



# the bar landscape

conceptual design response to minimum levels of soil contamination

December 4, 2007

**DRAFT**

For Stakeholder Advisory  
Committee Review only



# the bar landscape

conceptual design response to minimum levels of soil contamination

**December 4, 2007**  
**DRAFT**  
For Stakeholder Advisory  
Committee Review only



EXISTING SHRUBS THICKET AND MEADOW

MULTI-USE  
TRAIL

EXISTING TREE STAND

EXISTING TREE STAND WITH INFILL PLANTING

EXISTING GROUND LINE



**DRAFT**  
**December 4, 2007**  
**DRAFT**

**For Stakeholder Advisory  
Committee Review Only**



**winter recreation in the bar**

# Cherry Beach

Rustic, wooded beach with new edge at eastern gap

December 4, 2007

**DRAFT**

For Stakeholder Advisory  
Committee Review only





**December 4, 2007**

**DRAFT**

**For Stakeholder Advisory  
Committee Review only**



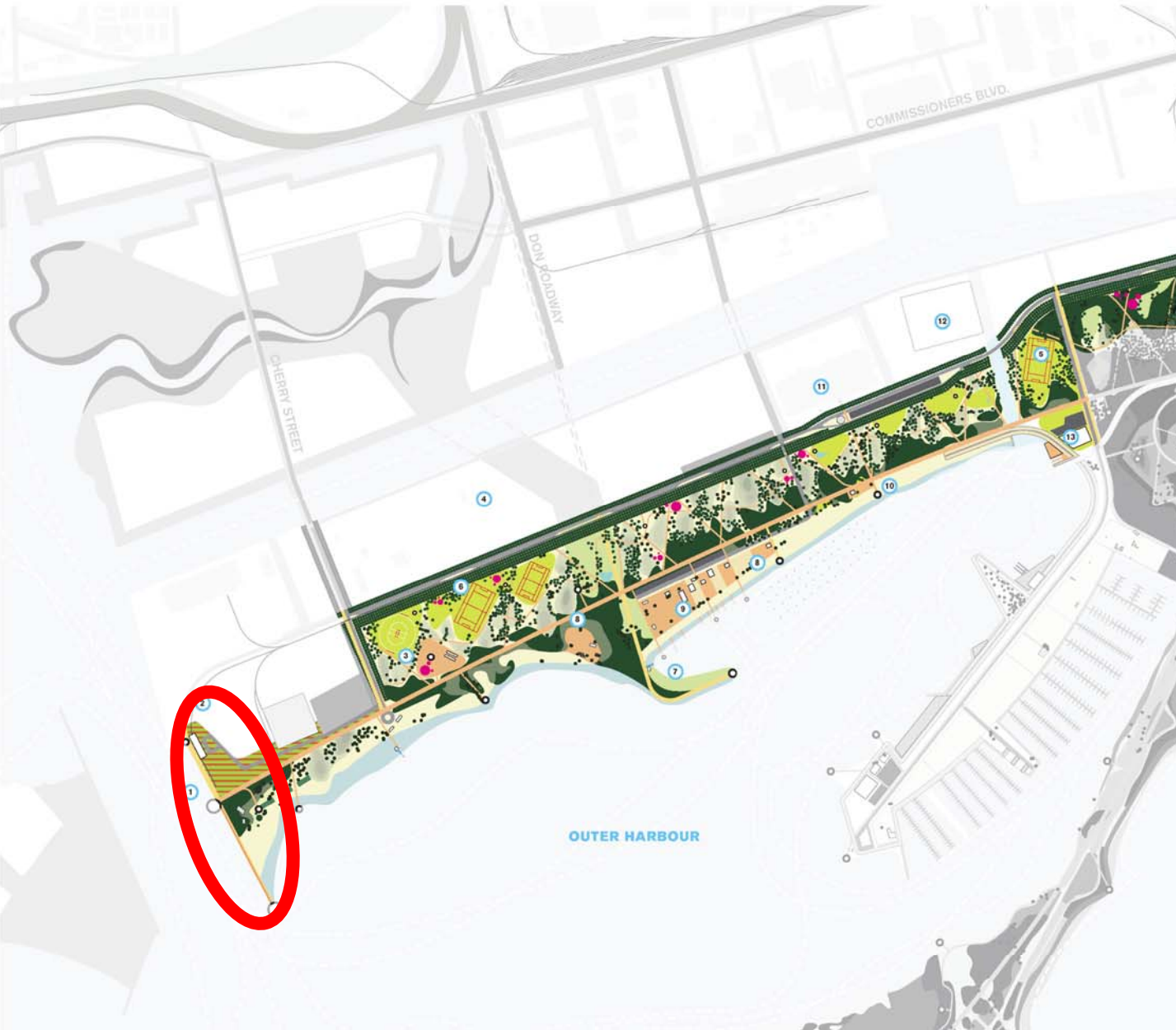
# Eastern Gap Ferry Dock

Great Lakes Destination / water ferries and taxis

December 4, 2007

**DRAFT**

For Stakeholder Advisory  
Committee Review only



CRUISE TERMINAL  
EASTERN GAP PROMENADE  
  
RECREATION PIER /  
BEACH RETENTION JETTY

- PRIMARY PEDESTRIAN PATHS:
- SECONDARY PEDESTRIAN PAT
- BOARDWALK / PROMENADE
- MIXED-USE TRAIL
- VEHICULAR

**THE BAR, CHERRY BEACH AND  
NORTH SHORE**  
draft masterplan





**December 4, 2007**

**DRAFT**

**For Stakeholder Advisory  
Committee Review only**



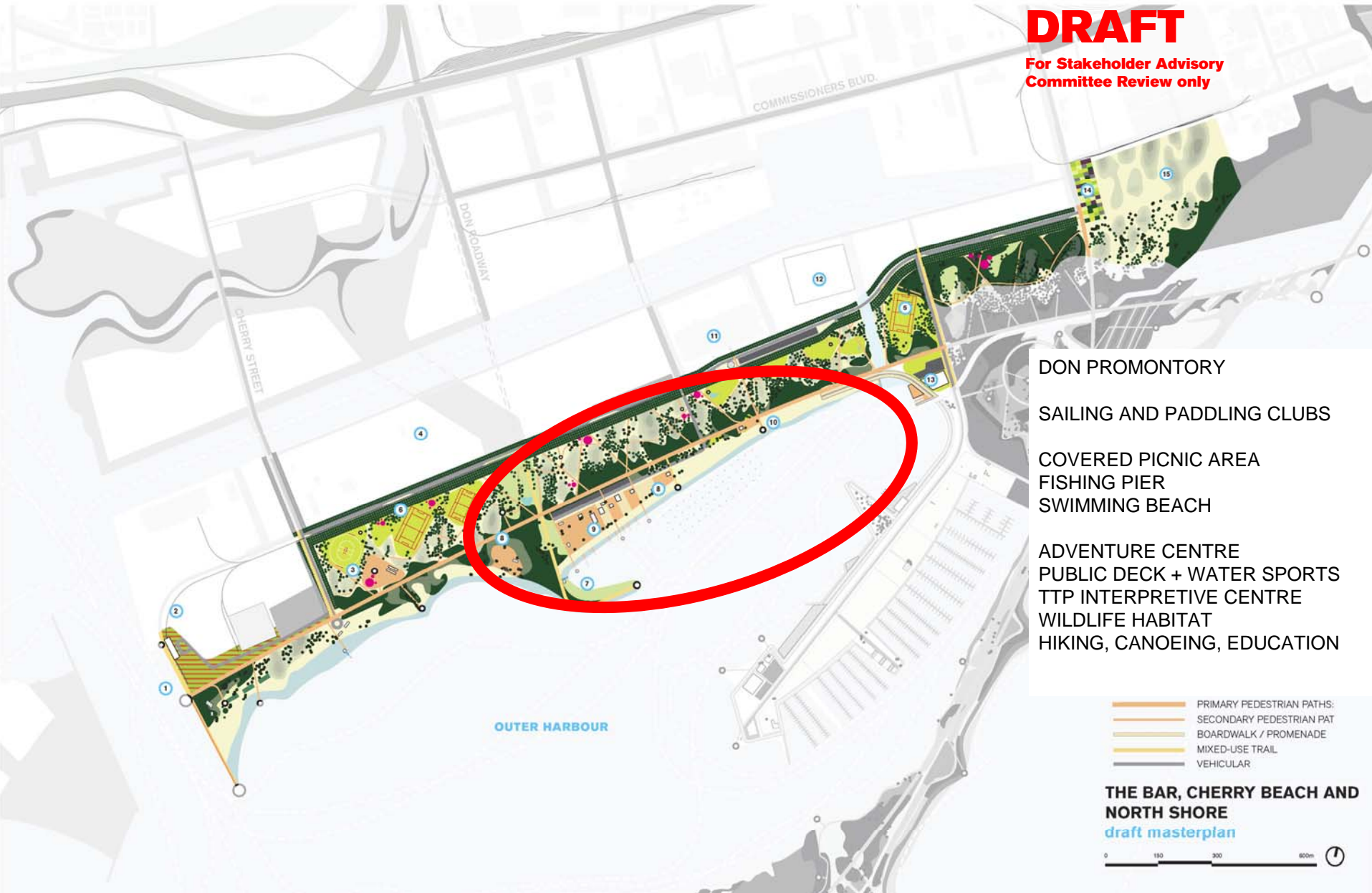
# North Shore

Water sports and waterfront recreation in a “cottage” setting

December 4, 2007

**DRAFT**

For Stakeholder Advisory  
Committee Review only



DON PROMONTORY

SAILING AND PADDLING CLUBS

COVERED PICNIC AREA

FISHING PIER

SWIMMING BEACH

ADVENTURE CENTRE

PUBLIC DECK + WATER SPORTS

TTP INTERPRETIVE CENTRE

WILDLIFE HABITAT

HIKING, CANOEING, EDUCATION



**December 4, 2007**

**DRAFT**

**For Stakeholder Advisory  
Committee Review only**



**December 4, 2007**

**DRAFT**

**For Stakeholder Advisory  
Committee Review only**



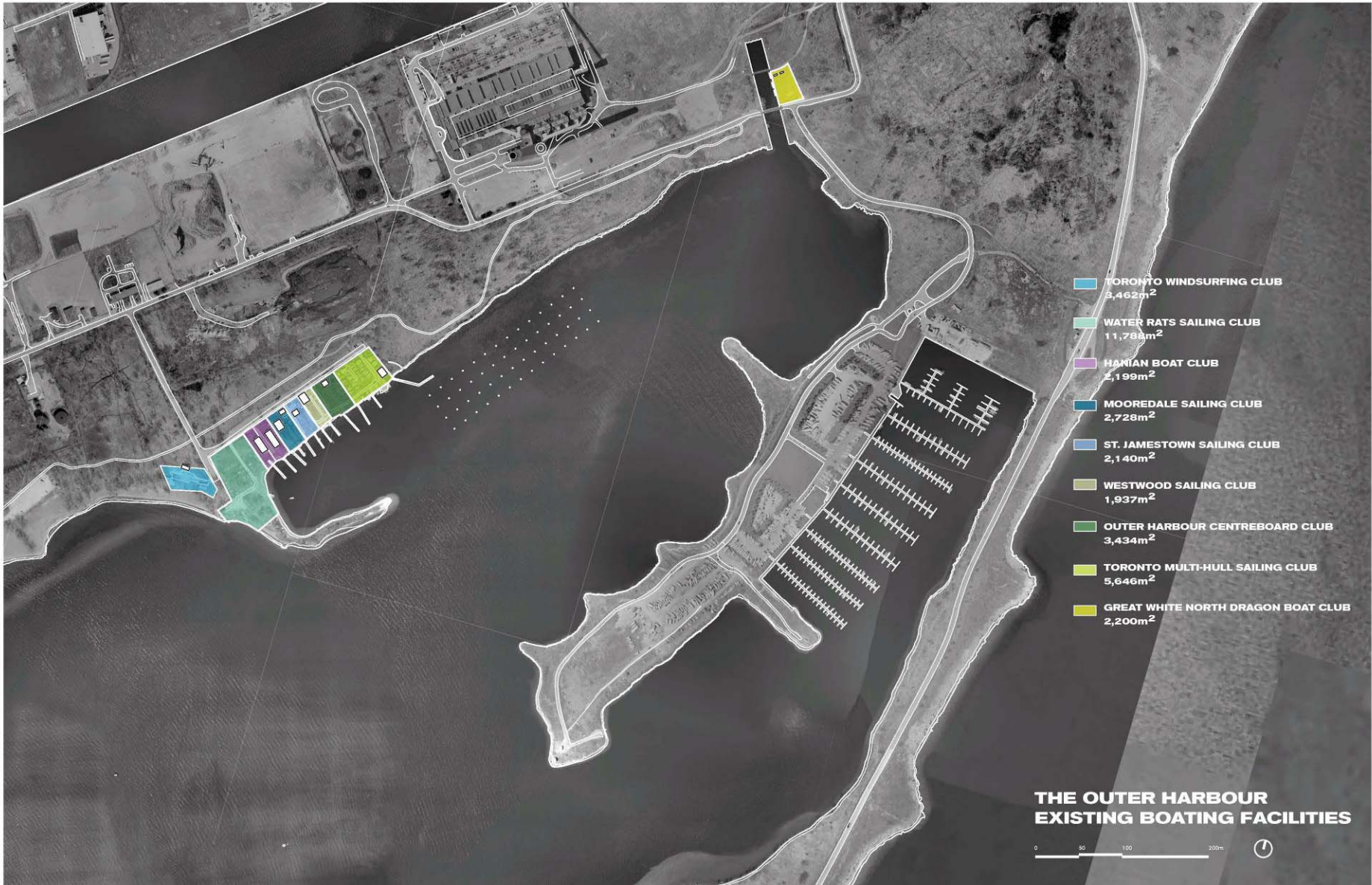


# The Outer Harbour Sailing Federation

December 4, 2007

**DRAFT**

For Stakeholder Advisory  
Committee Review only



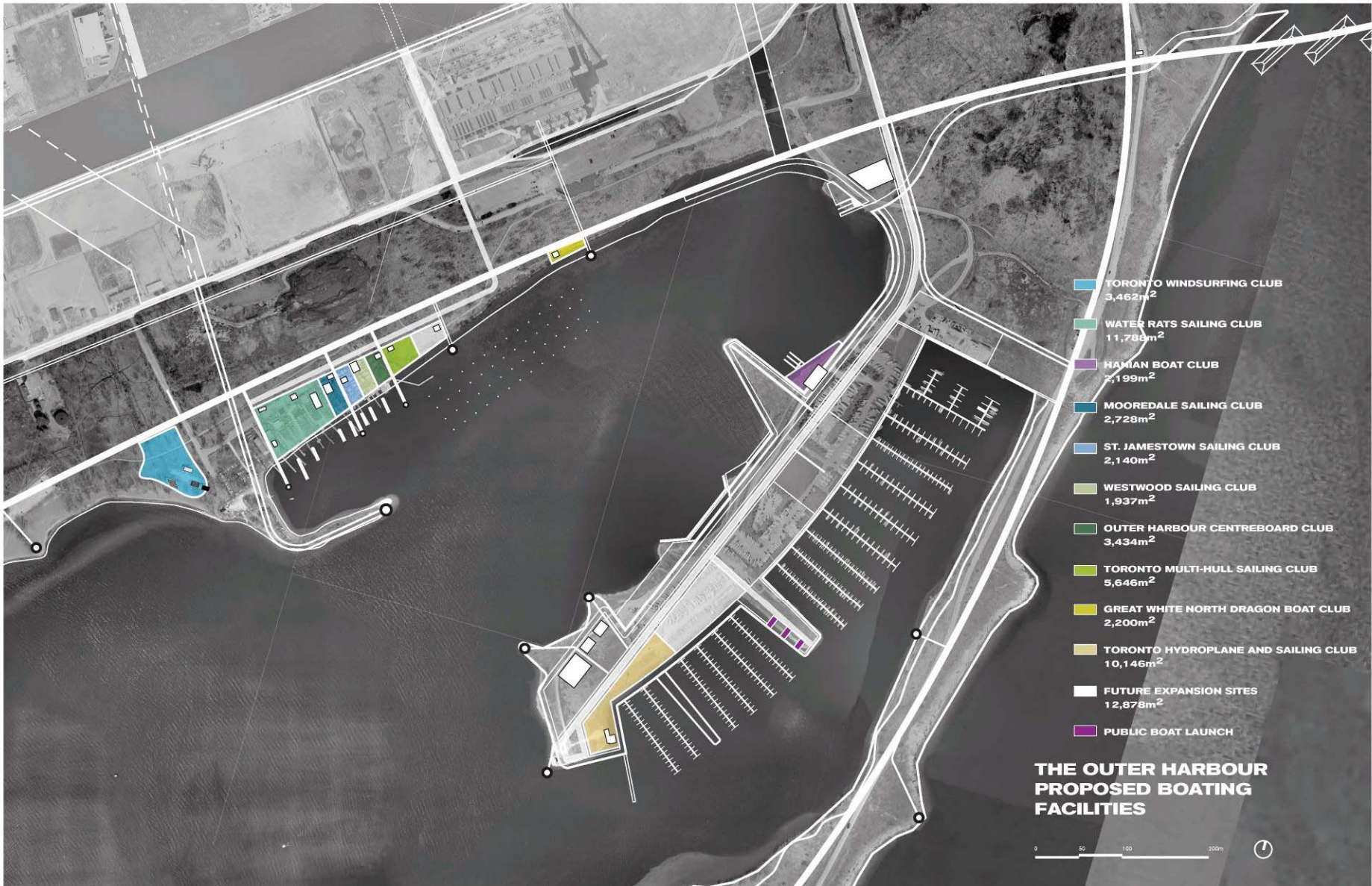


# The Outer Harbour Sailing Federation

December 4, 2007

**DRAFT**

For Stakeholder Advisory  
Committee Review only









**December 4, 2007**

**DRAFT**

**For Stakeholder Advisory  
Committee Review only**



**bar transect and new beach on the north shore**



**December 4, 2007**

**DRAFT**

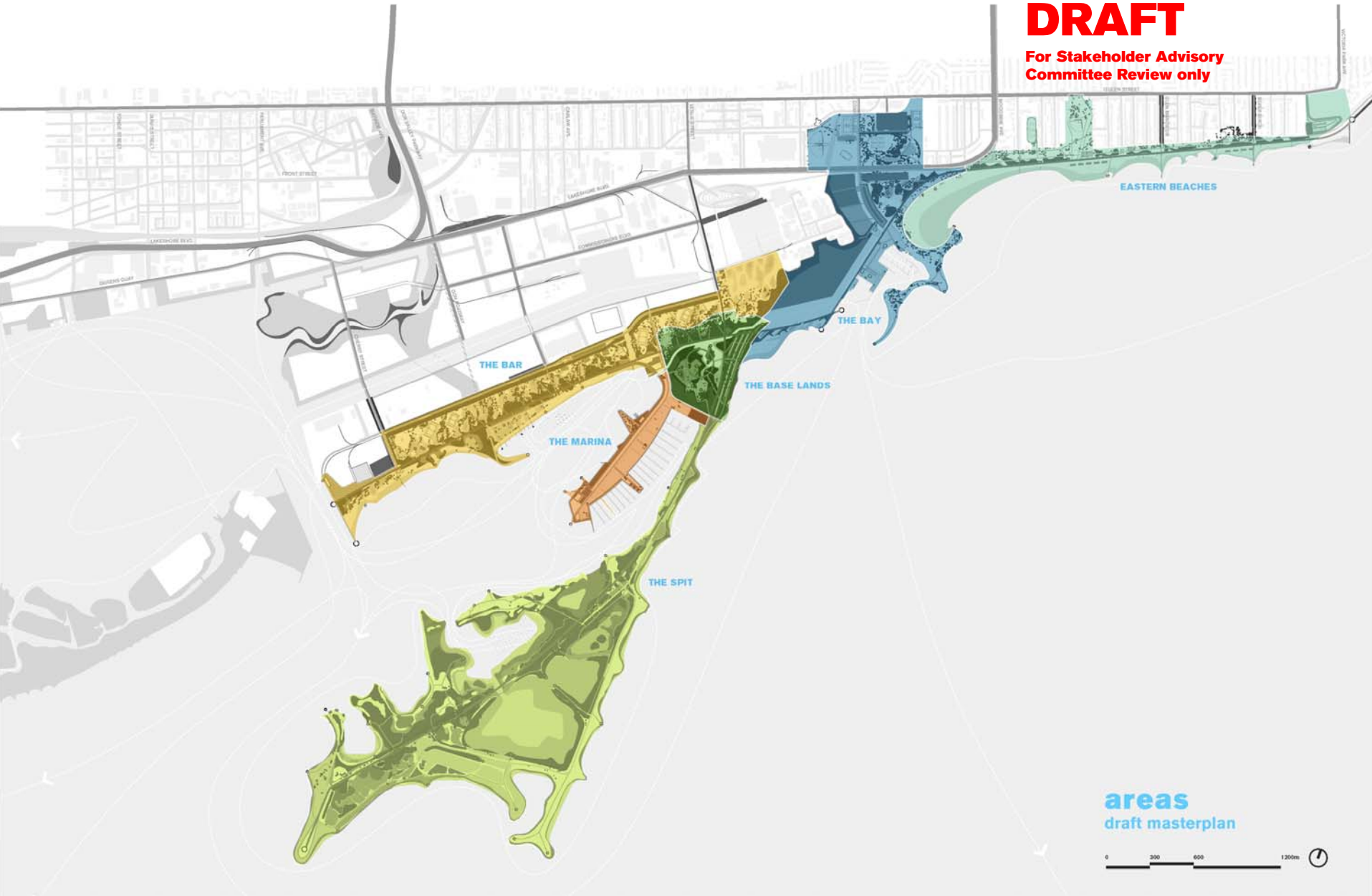
**For Stakeholder Advisory  
Committee Review only**

the peninsula

**December 4, 2007**

**DRAFT**

**For Stakeholder Advisory  
Committee Review only**



**areas**  
draft masterplan





**December 4, 2007**

**DRAFT**

**For Stakeholder Advisory  
Committee Review only**

# Marina Peninsula

- **Lookouts, fishing piers and picnic areas with views of activity on the water**
- **Reduced programming pressure on the water edge of North Shore**
- **Potential for a café / restaurant, fishing charters or sailing school (small scale, revenue generating uses compatible with the park)**

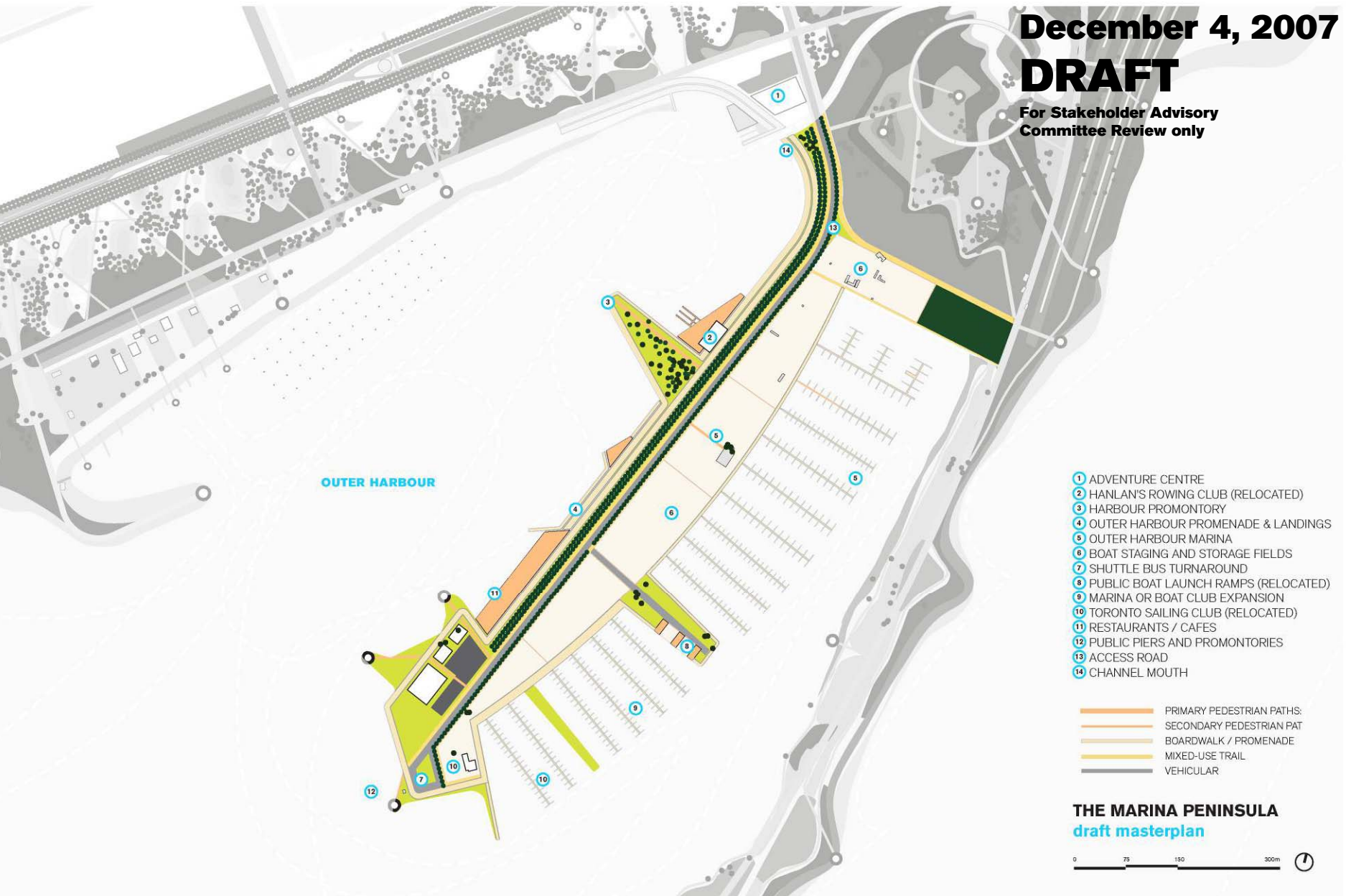
# Marina Peninsula

## Public water access and views along an active recreation deck

December 4, 2007

# DRAFT

For Stakeholder Advisory  
Committee Review only





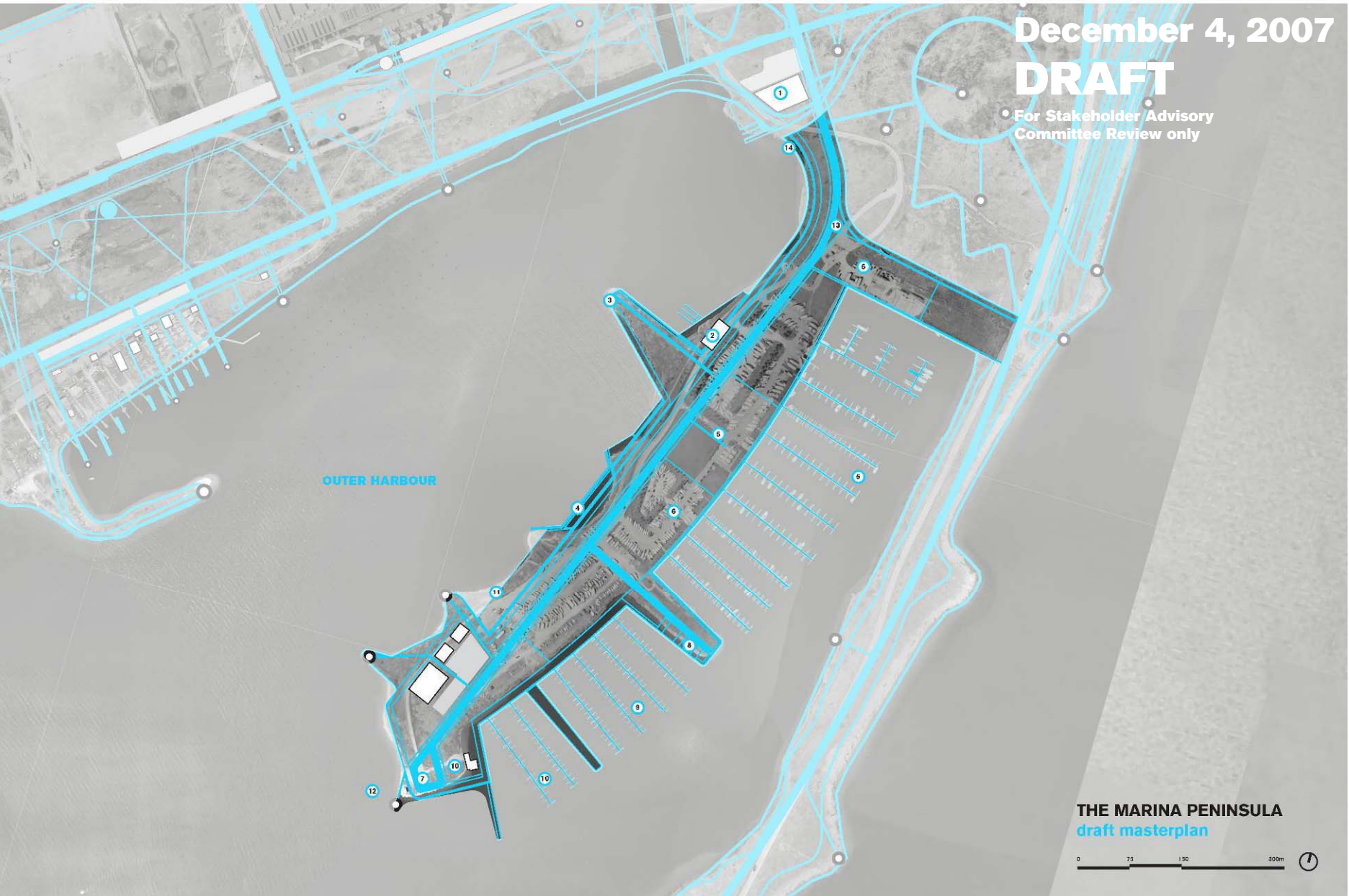
# Marina Peninsula

## Public water access and views along an active recreation deck

December 4, 2007

**DRAFT**

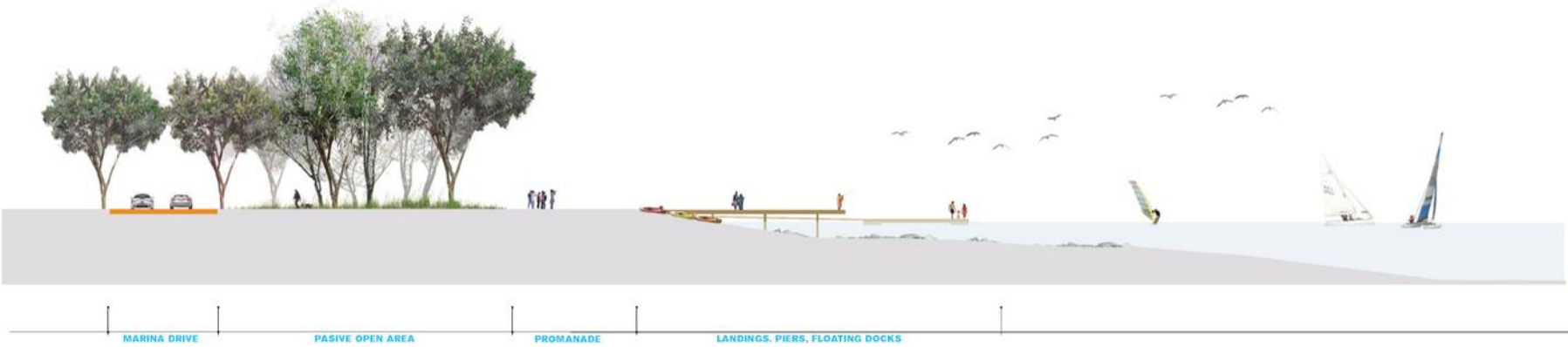
For Stakeholder Advisory  
Committee Review only



**December 4, 2007**

**DRAFT**

**For Stakeholder Advisory  
Committee Review only**





**December 4, 2007**

# **DRAFT**

**For Stakeholder Advisory  
Committee Review only**





**December 4, 2007**

**DRAFT**

**For Stakeholder Advisory  
Committee Review only**





**December 4, 2007**

**DRAFT**

**For Stakeholder Advisory  
Committee Review only**



**December 4, 2007**

**DRAFT**

**For Stakeholder Advisory  
Committee Review only**

**lake ontario park  
will be:**



# a regional greenway and green waterfront

December 4, 2007

**DRAFT**

For Stakeholder Advisory  
Committee Review only



*Don Valley*

*Humber Valley*



*Lake Ontario Park*



**December 4, 2007**

**DRAFT**

**For Stakeholder Advisory  
Committee Review only**



**▪ world class, signature park for  
the whole city**



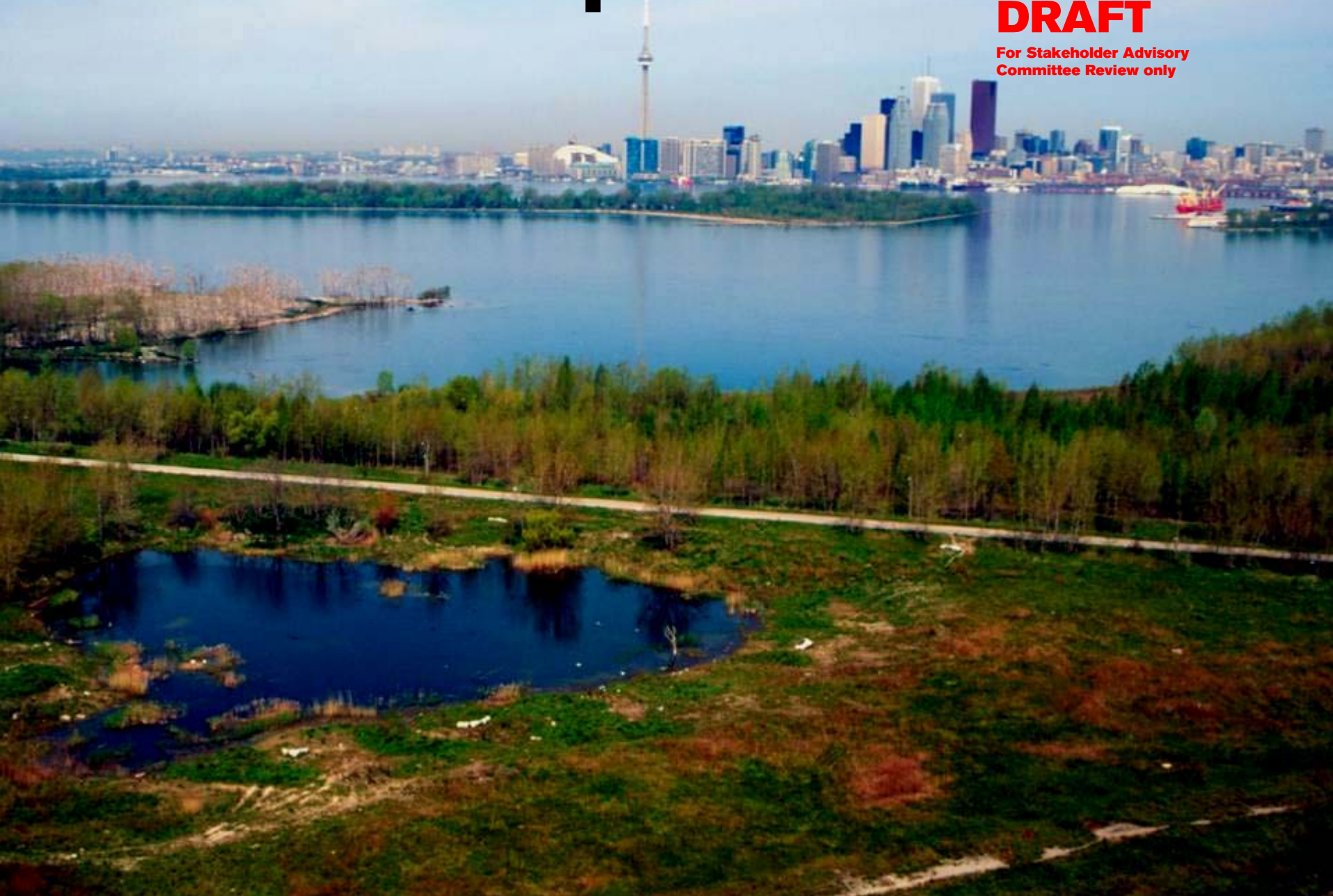


# ▪ wild landscapes

**December 4, 2007**

**DRAFT**

**For Stakeholder Advisory  
Committee Review only**





**December 4, 2007**

**DRAFT**

**For Stakeholder Advisory  
Committee Review only**

▪ **vibrant lakefront**







December 4, 2007

**DRAFT**

For Stakeholder Advisory  
Committee Review only

- **“big nature,” water sports,  
recreation and culture**

