



# Annual General Meeting

NOVEMBER 15, 2006



**TORONTO WATERFRONT  
REVITALIZATION CORPORATION**



# Presentation Overview

- 2005/06 Achievements
- 2006/07 Strategic Priorities
- 2006/07 Highlights
- Questions & Answers



# 2005/06 Achievements

May '05      June '05      July '05      August '05      September '05      October '05      November '05      December '05      January '06      February '06      March '06



City Council Approval  
WDL Precinct Plan

Design Review Panel Appointed

York Quay Promenade  
Completed

Mouth of Don Naturalization  
EA Started

10-Year Plan Approved by  
Three Governments

TWRC/ORC/PIR MOU Signed

7 Queens Quay  
Purchased

Construction of  
Martin Goodman Trail  
& Marilyn Bell Park  
Improvements Started

Watercourse Construction Started

City Council Approved  
East Bayfront Precinct Plan

Intelligent Community  
Advisory Council Established

Construction of  
John Quay Promenade  
Started

TWRC/TEDCO/City MOU Signed

Design of  
Don River Park  
Started

Central Waterfront  
Innovative Design  
Competition Launched

EAs for New  
Waterfront Transit  
Lines Started

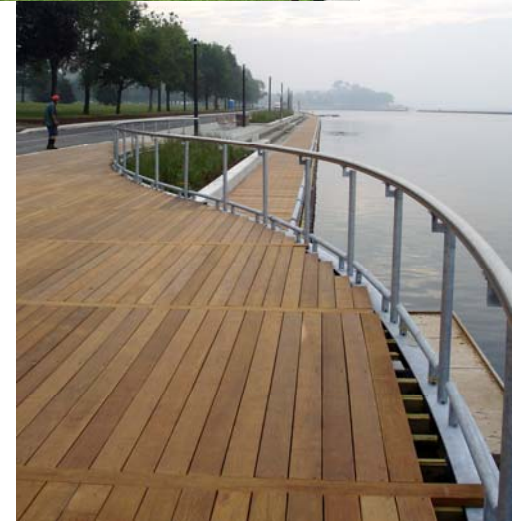
Work In  
West Don Lands  
Started

TWRC/TCMC MOU  
for Waterfront  
Affordable Housing  
Signed



# 2005/06 Achievements

- West Don Lands
- Don River Park
- East Bayfront
- John Quay Promenade
- Martin Goodman Trail
- Western Beaches Watercourse
- Foot of Yonge Street
- Central Waterfront Design Competition



# West Don Lands Achievements

**May 2005**

City Council approved Precinct Plan

**Sept. 2005**

TWRC, PIR and ORC signed MOU for West Don Lands development

**Feb. 2006**

TWRC and TTC launched EA for new transit line

**Mar. 2006**

Work officially started on first phase of development

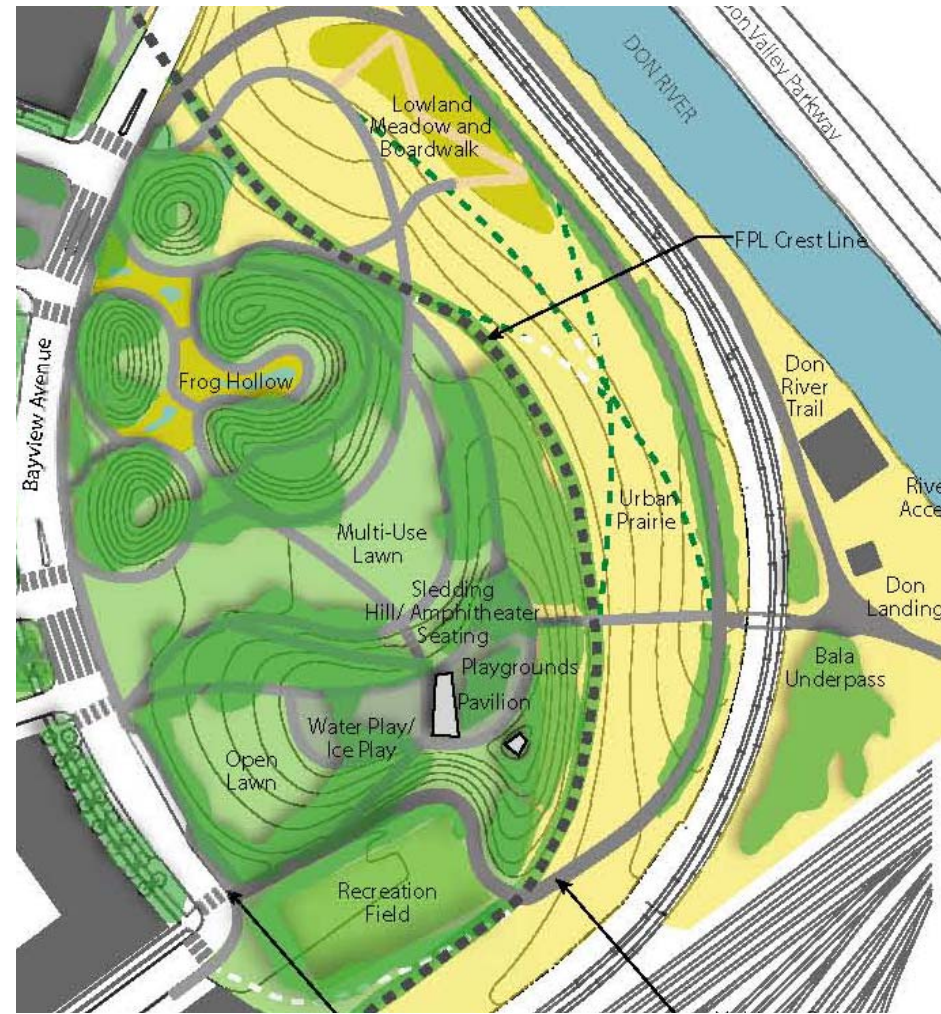
**Mar. 2006**

TWRC and TCHC signed MOU for phase I affordable rental housing in West Don Lands



# Don River Park

- Design work started on Don River River Park – Feb. 2006
- This seven hectare park will be the cornerstone for the new West Don Lands Neighbourhood Neighbourhood
- Park design complete fall 2006



# East Bayfront Achievements

**Dec. 2005**

City Council approved Precinct Plan

**Feb. 2006**

TWRC, City of Toronto and TEDCO signed MOU for East Bayfront and Port Lands development

**Feb. 2006**

TWRC and TTC launched EA for new transit line



# John Quay Promenade



- Construction started Dec. 2005; 2005; work completed July 2006 2006
- Project featured extensive landscaping improvements, including new 19-metre promenade
- Builds on success of York Quay Quay Promenade





# Martin Goodman Trail

- Construction started on trail improvements and expansion in Oct. 2005
- Road turned into car-free dedicated trail
- Construction on Marilyn Bell Park to Ontario Place now underway; complete fall 2006



# Western Beaches Watercourse



- Construction started Oct. 2005; complete Apr. 2006
- IDBF Club Crew World Championships held at site in Aug. 2006
- Project also included Marilyn Bell Park improvements



# Foot of Yonge Street



- TWRC acquired property at foot of foot of Yonge St. in Sept. 2005 2005
- First step in providing public public accessibility along waterfront in this area
- TWRC continues dialogue with with neighbouring private landowners on opening more of more of site for public use

# Central Waterfront Design Competition



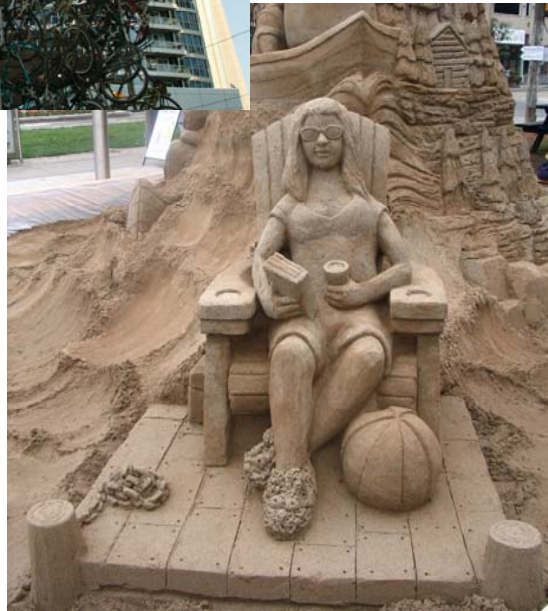
- Design competition launched in Feb. 2006
- 38 teams from 15 counties responded to RFQ; five teams selected to participate
- West 8 + DTAH winning team
- Providing public with continuous access along central waterfront
- Transform Queens Quay into iconic boulevard

# Quay to the City: Summer '06

- TWRC held 10 day event to give Torontonians a taste of winning winning design
- During event:
  - East bound lanes of Queens Quay closed
  - One-kilometre lawn was installed between Spadina and York
  - Martin Goodman Trail extension through central waterfront
- Implementation of design underway fall 2006



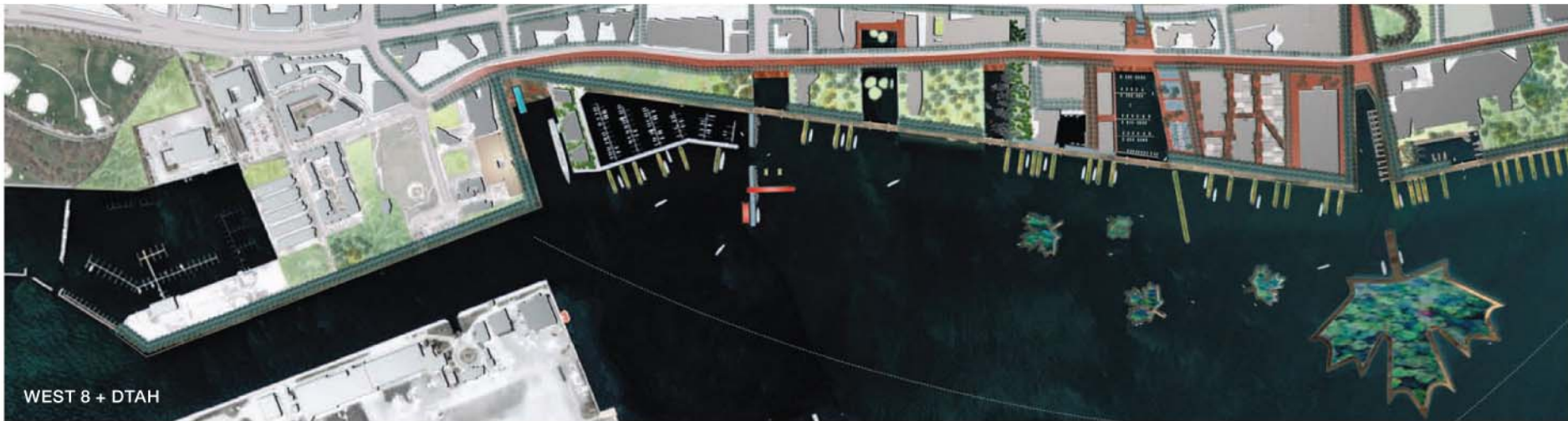
# Quay to the City: Summer '06 Highlights



QUAY  
TO THE  
CITY



# 2006/07 Strategic Priorities



# Sustainability

- Key driver of revitalization
  - Mixed-use/local services
  - Transit
  - Green Building Specification
  - LEED Gold
  - Green infrastructure/  
District Energy





# West Don Lands

## Key Elements

- 9.3 hectares of parks and public spaces - 25% of precinct
- 6,000 residential housing units;  
1,200 affordable
- One million sq ft commercial
- Elementary School
- Recreation and 2 childcare centres
- Public transit < five minute walk
- Bikeways, pedestrian connection



# Approach to Development

- Flood protection
- Major public spaces
- Zoning and other agreements in place
- Roads and servicing
- Environmental management

---

= CERTAINTY



# West Don Lands Phase One



- McCord Site
  - 550 residential units
  - 420 market units
  - 130 affordable housing
- Berm
- Don River Park
- Transit

# East Bayfront

- Business and implementation plan approved approved in July 2006 and zoning by-law passed in Sept. 2006
- 15 year build-out and \$320M in public funding public funding
- Employment strategy to attract knowledge-knowledge-based employment on waterfront waterfront
- Creation of 8000 jobs over build-out
- Animated ground floor strategy to ensure East ensure East Bayfront is a major regional regional attraction



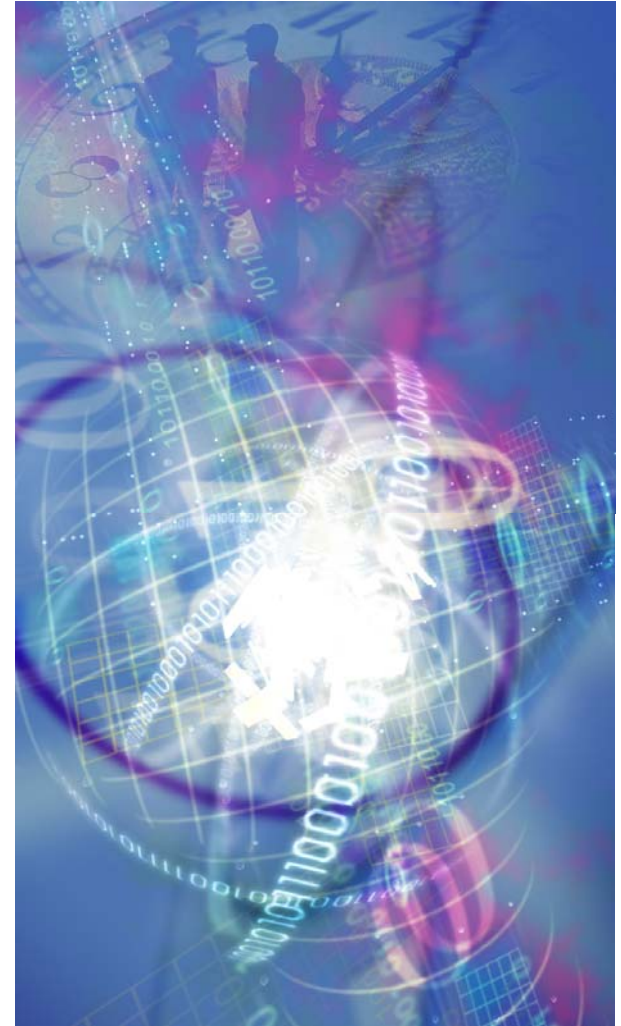
# East Bayfront – Phase One

- Queens Quay between Jarvis St. and new Sherbourne Park
- Phase one includes:
  - Sherbourne Park and water's edge promenade
  - Public transit line
  - 1,300 residential units including 260 affordable rental units
  - 2,300 jobs in 37,000 m2 of employment space
  - 14,000 m2 of ground floor cultural, retail, service and entertainment uses
- TWRC will launch design process for Sherbourne Park in fall 2006



# Intelligent Communities

- Economic development and attracting creative, knowledge-based employment is a fundamental part of TWRC's vision
- Key to success = **i-waterfront\*Net** (low-cost ultra-broadband intelligent communications infrastructure)
- Competitive advantage
- East Bayfront and West Don Lands will both have **i-waterfront\*Net** infrastructure



# Intelligent Communities

- TWRC established i-Waterfront Council in Nov. 2005
- To provide advice on the creation of ultra- broadband intelligent communities infrastructure
- Members include representatives from government, academia, telecommunications, healthcare, finance, arts and entertainment sectors
- Low-cost ultra-broadband infrastructure is a key incentive to attracting knowledge-based employers on the waterfront



# Central Waterfront Implementation

- Central Waterfront Master Plan
- Phase 1 work includes design and construction of Queens Quay from Spadina from Spadina to York/Bay & one Head of Slip
  - Feasibility Study
  - Environmental Assessment
  - Schematic design, detailed design and construction tender
- Phase 2 work includes water's edge design and construction





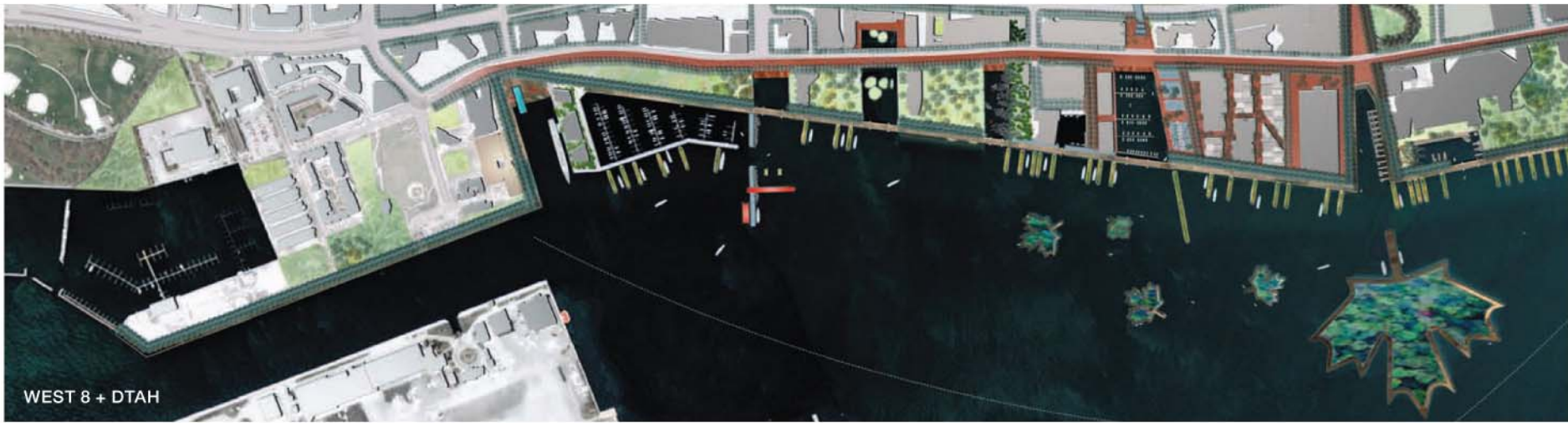
# Central Waterfront Implementation



He



# 2006/07 Highlights



WEST 8 + DTAH



# Union Station Subway Platform Expansion

- Start of construction on Union Station subway platform subway platform expansion in May 2006
- Union Station is hub for new transit network on network on waterfront
- Project includes:
  - Second platform to address overcrowding
  - Create a direct connection between streetcar and streetcar and subway
  - Support GO Transit's expansion by widening widening passage in subway station
  - Improve overall accessibility in subway station station
- Project completion 2010



# Mimico Waterfront Linear Park



- Construction officially started in July 2006
- Stretches from Humber Bay Park to Park to Norris Crescent Parkette Parkette
- Goal to provide community with access access to this section of shoreline shoreline
- Waterfront trail extension, creation of creation of sand dunes & cobble beaches and enhancement of aquatic aquatic habitat
- Phase 1 complete in 2008



# Port Union Waterfront Park

- Port Union Waterfront Park –Phase I  
Phase I opens Sept. 2006
- Park runs along Lake Ontario from  
from Highland Creek to the Rouge River  
Rouge River
- New park provides community with  
with access to 3.6 km of shoreline, trails,  
shoreline, trails, wetlands and beaches  
beaches
- Construction will start on  
Phase II once land is acquired



# Leslie Street Greening

- Leslie Street is one of the major gateway's to the Port Lands and future Lands and future Lake Ontario Park
- Phase 1 of Leslie Greening is complete
- Work has started on the design of Phase II
- TWRC continues to meet with community stakeholders



# Port Lands Sport Fields

- Meeting important recreational needs
- West of Regatta Road, north of Cherry Beach
- Environmental Benefits
- Work starts late-Nov. 2006
- Sport fields completed Spring 2007



# Thank You!


- **Shareholders** – federal, provincial and municipal governments and their waterfront staff
- **Partners** - TRCA, ORC, TEDCO, TPA, TCHC, TTC, consultants, board members and design review panel
- **Community Stakeholders**





**TORONTO WATERFRONT**  
**REVITALIZATION CORPORATION**





# **QUESTIONS & ANSWERS**

