



December 5, 2007

**DRAFT**

For Stakeholder Advisory  
Committee Review only

**lake ontario park**

# a regional greenway and green waterfront

December 5, 2007

**DRAFT**

For Stakeholder Advisory  
Committee Review only



*Don Valley*

*Humber Valley*



*Lake Ontario Park*

**organizing ideas:**

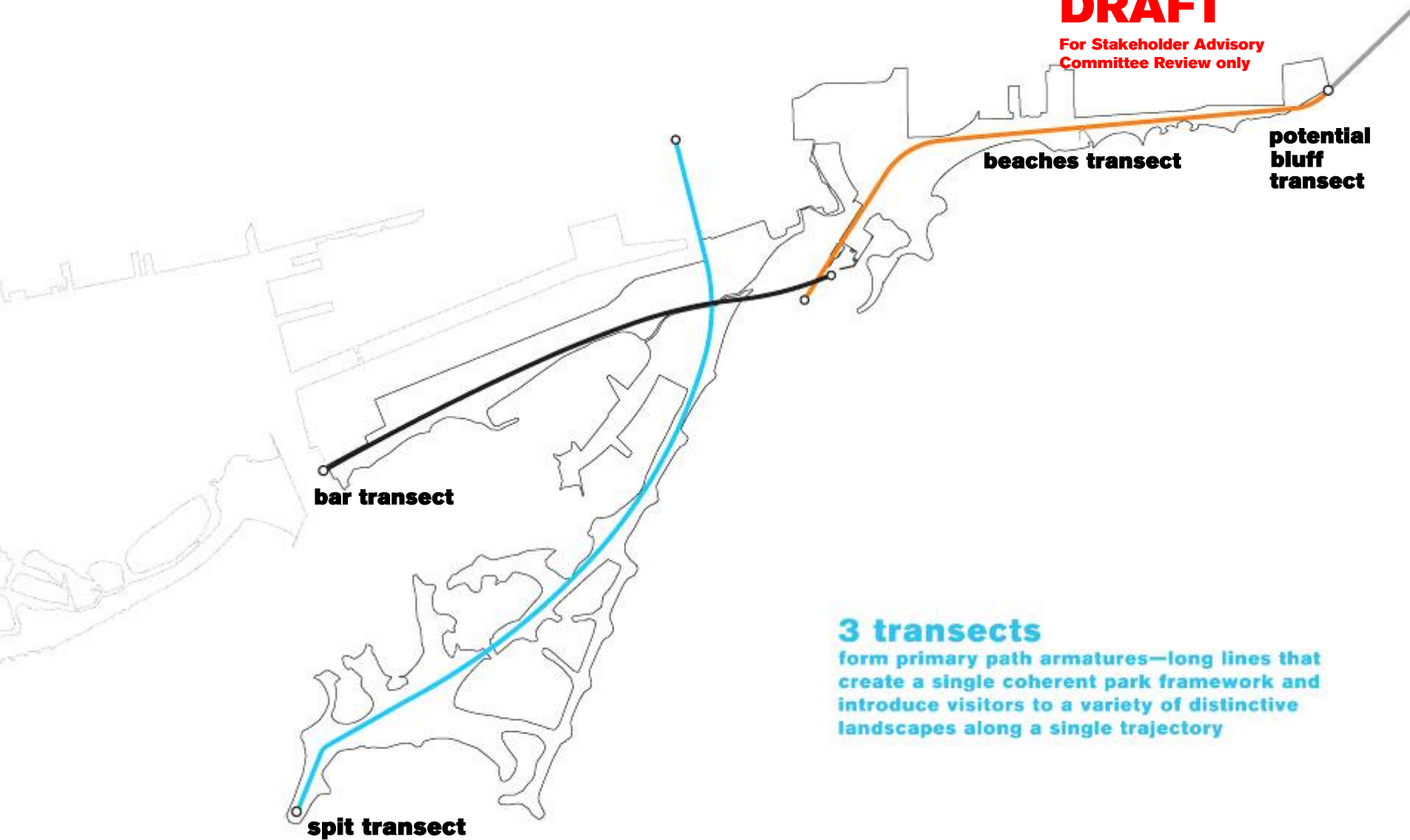
**transects and outposts,**

**the bar and the bay**

**December 5, 2007**

**DRAFT**

For Stakeholder Advisory  
Committee Review only



**bar transect**

**spit transect**

**beaches transect**

**potential  
bluff  
transect**

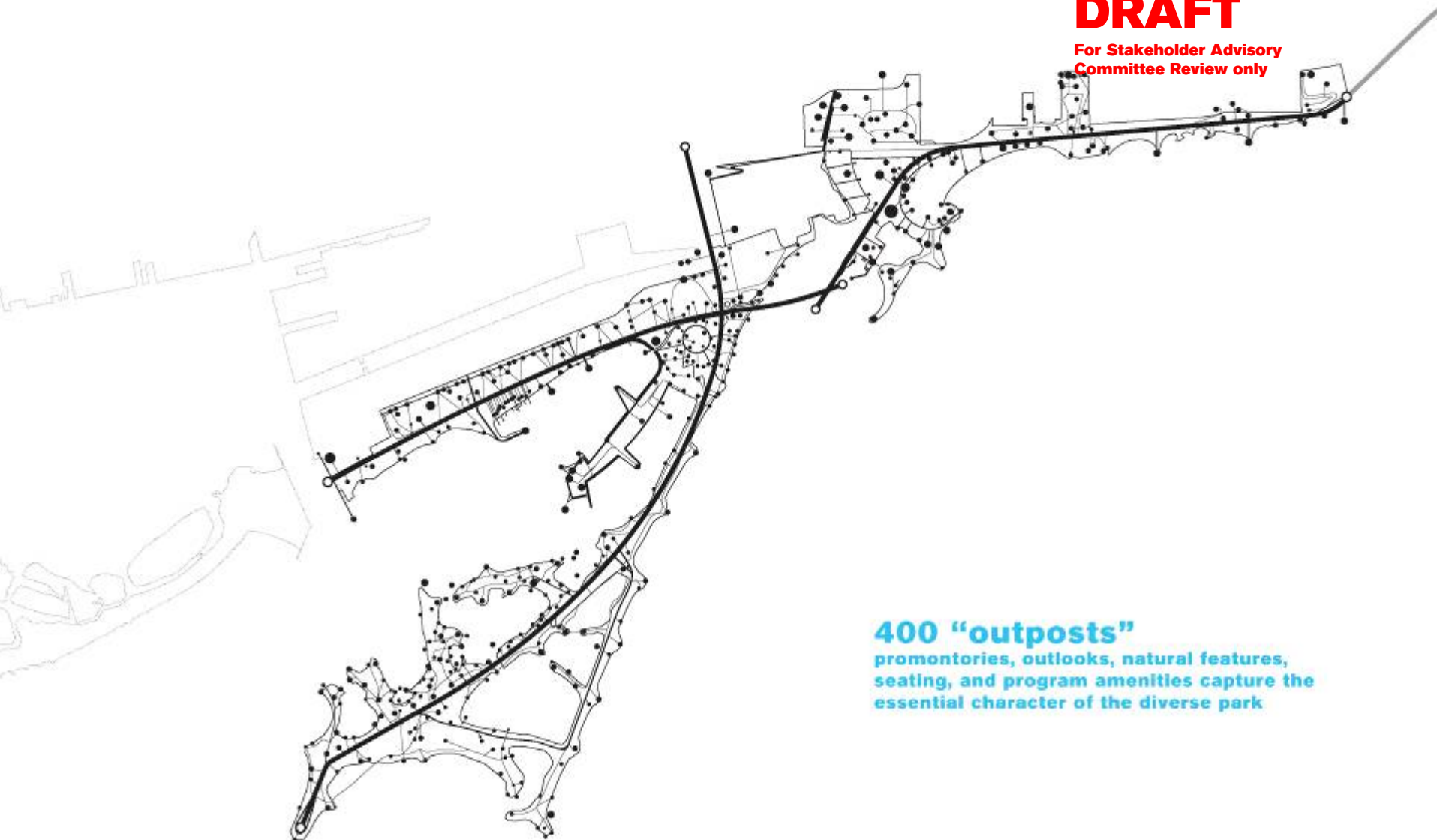
**3 transects**

form primary path armatures—long lines that create a single coherent park framework and introduce visitors to a variety of distinctive landscapes along a single trajectory

**December 5, 2007**

**DRAFT**

**For Stakeholder Advisory  
Committee Review only**



**400 "outposts"**

**promontories, outlooks, natural features,  
seating, and program amenities capture the  
essential character of the diverse park**

**December 5, 2007**

**DRAFT**

**For Stakeholder Advisory  
Committee Review only**



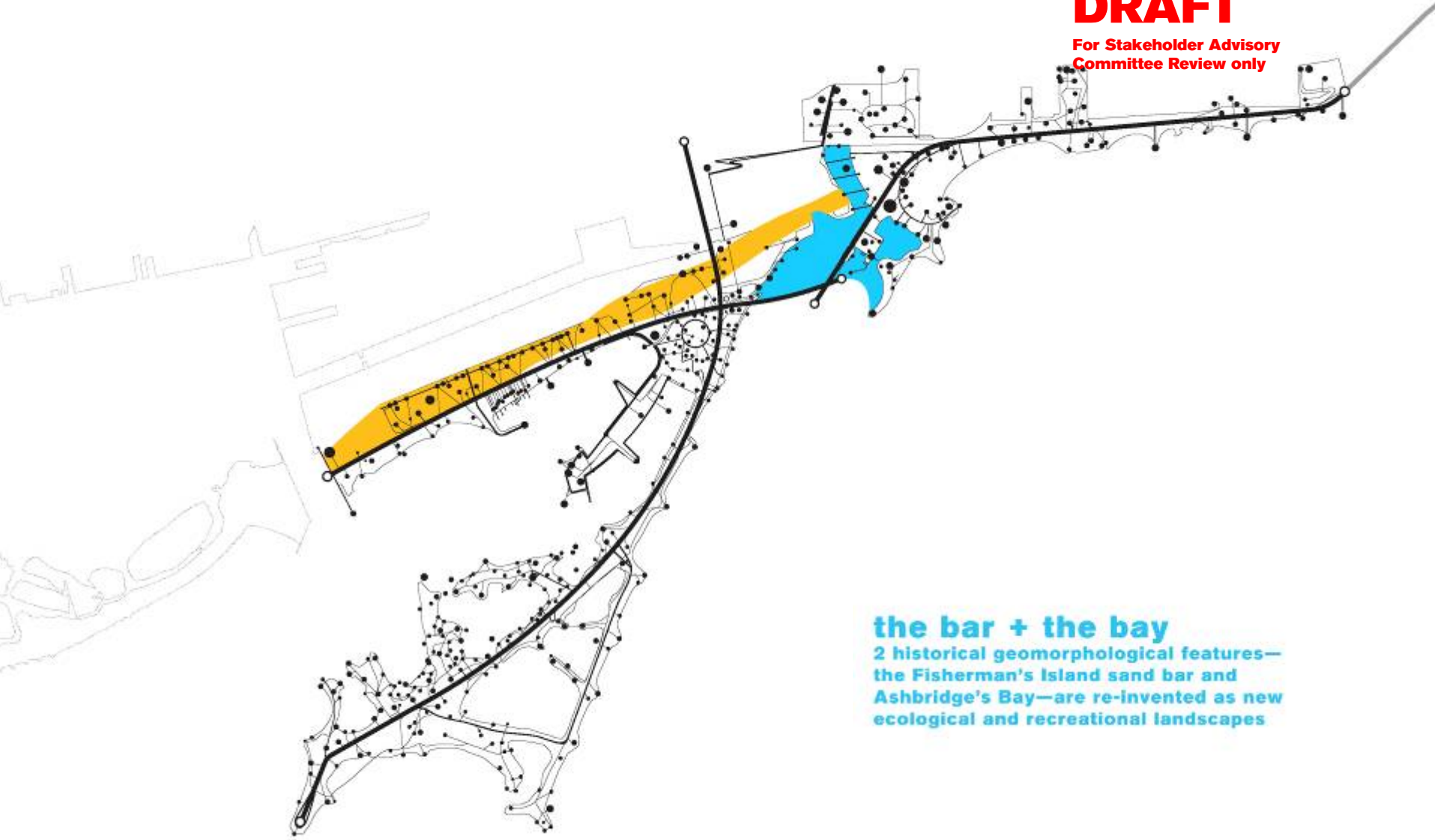
**the bar**

**forms the western threshold of the park  
built mostly on man-made land**

**December 5, 2007**

**DRAFT**

**For Stakeholder Advisory  
Committee Review only**



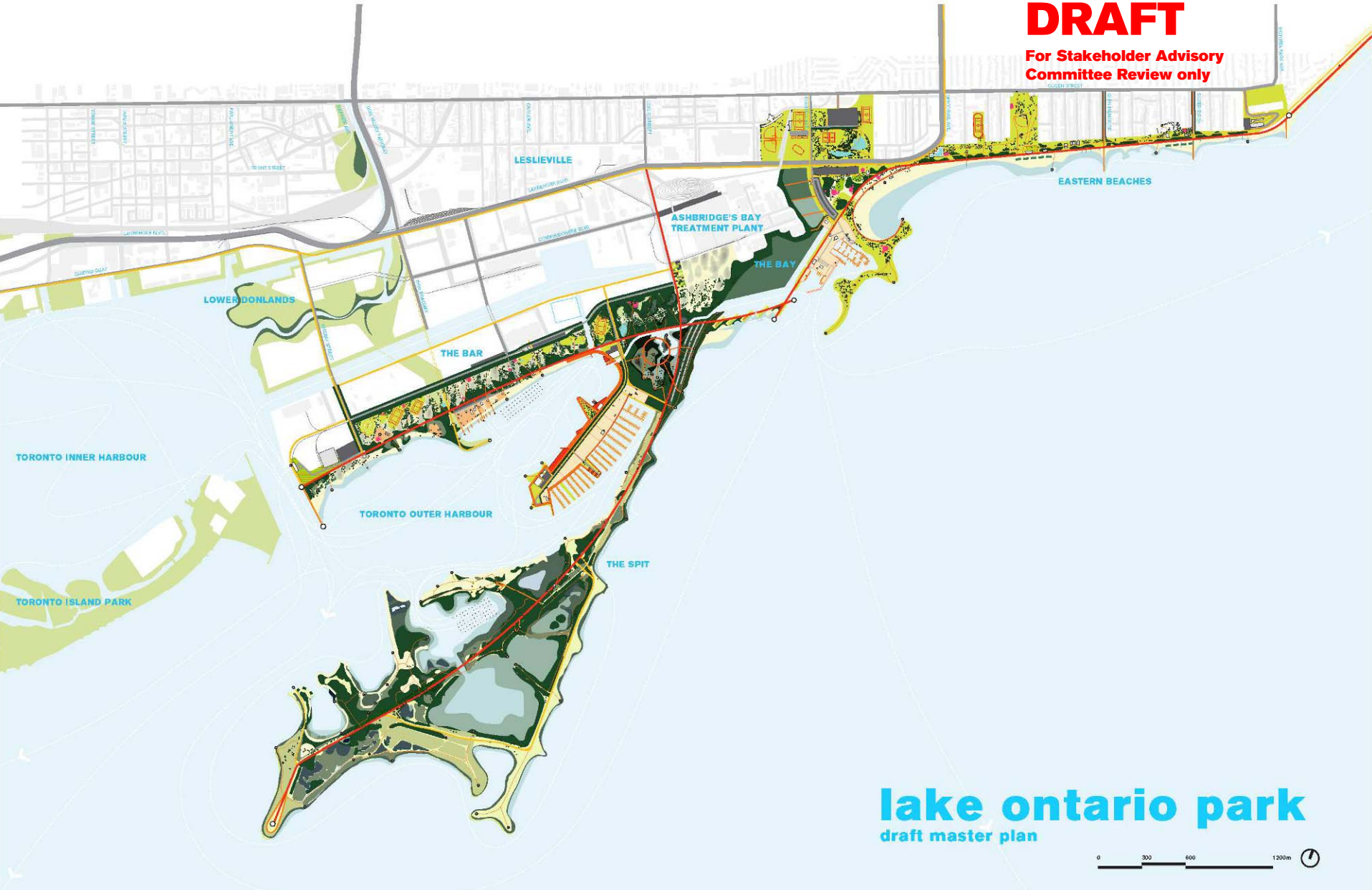
**the bar + the bay**

**2 historical geomorphological features—  
the Fisherman's Island sand bar and  
Ashbridge's Bay—are re-invented as new  
ecological and recreational landscapes**

**December 5, 2007**

**DRAFT**

**For Stakeholder Advisory  
Committee Review only**



**lake ontario park**  
draft master plan

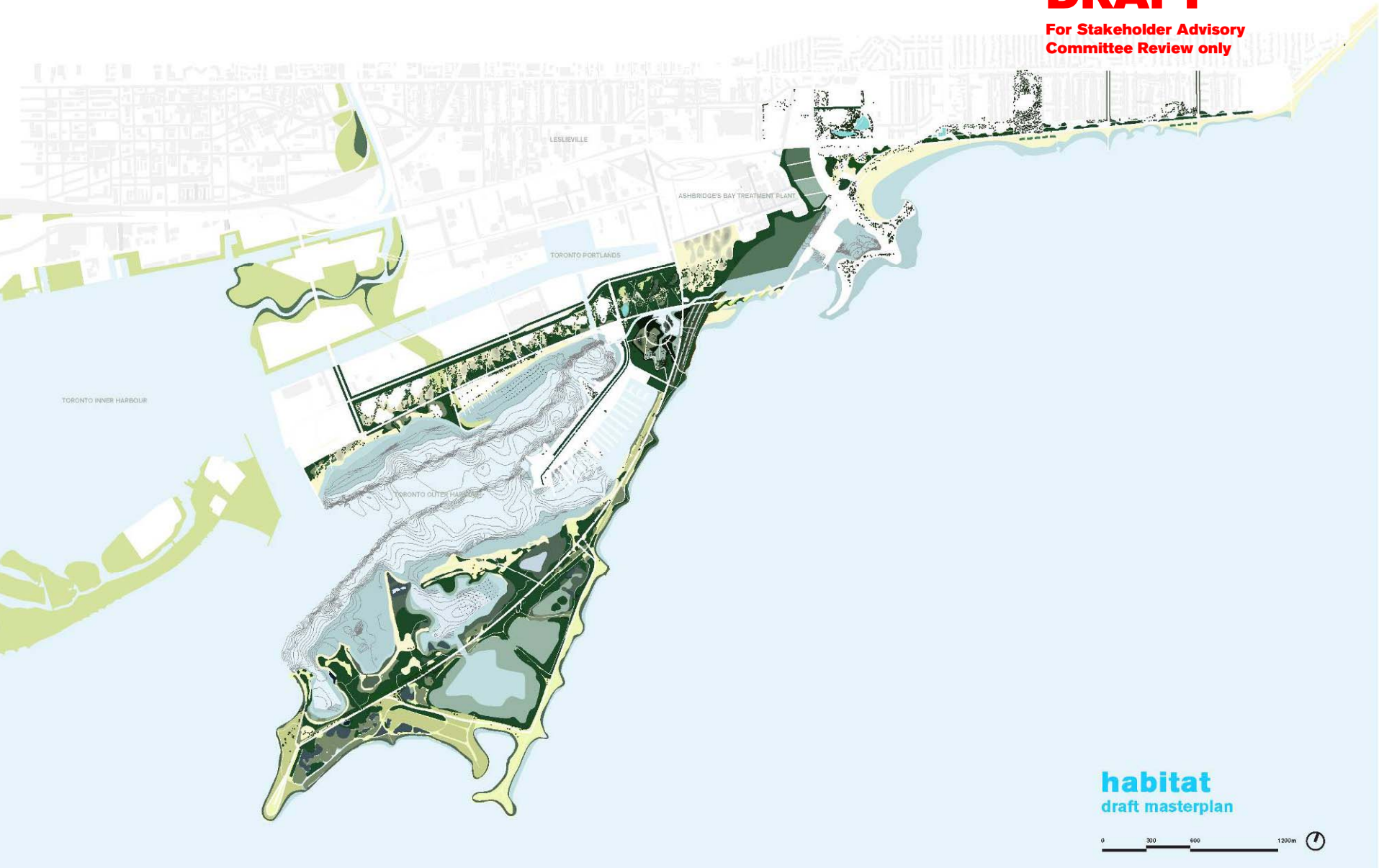




**December 5, 2007**

**DRAFT**

**For Stakeholder Advisory  
Committee Review only**



**December 5, 2007**

**DRAFT**

**For Stakeholder Advisory  
Committee Review only**



**legend**

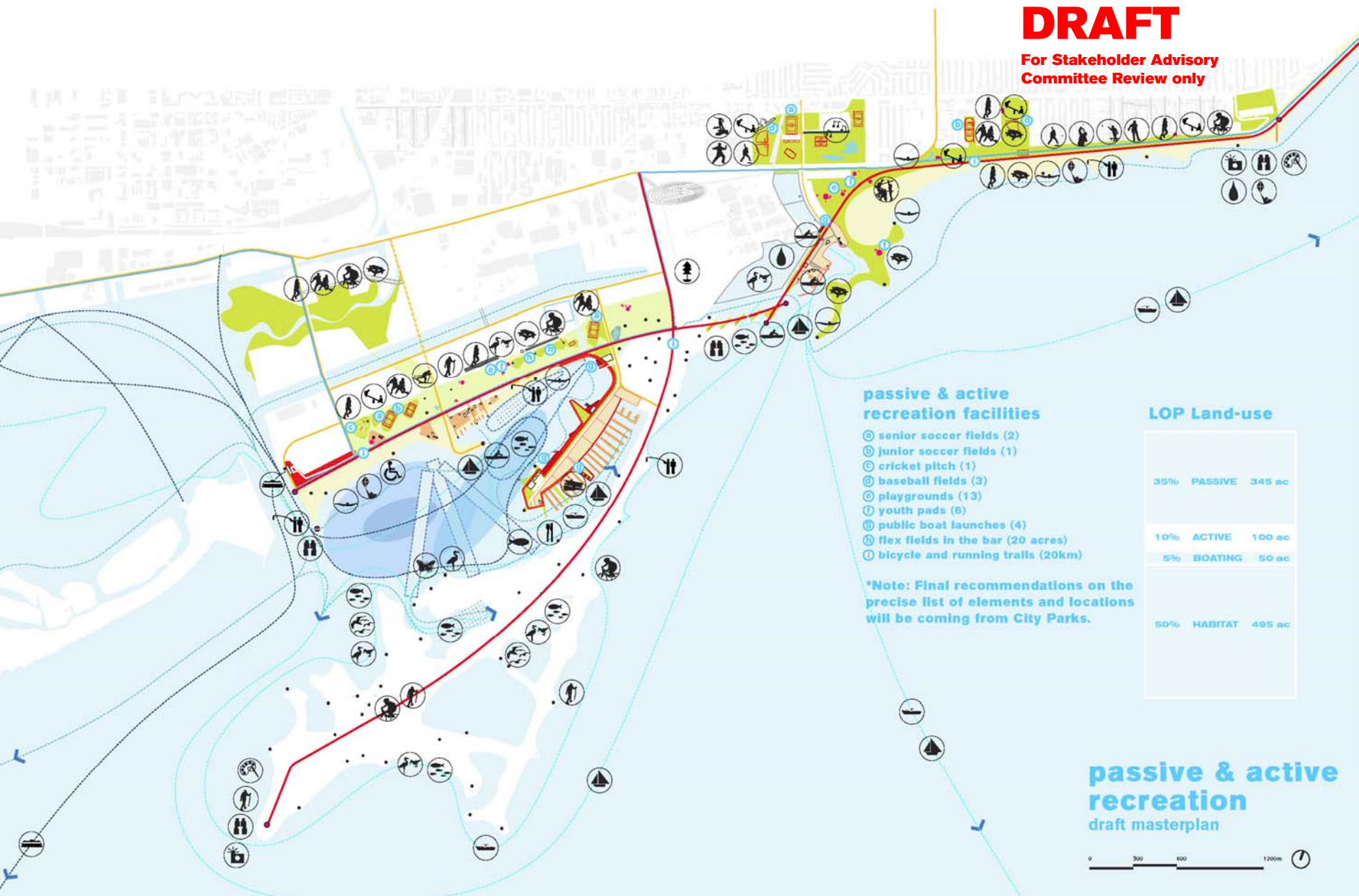
-  EXISTING CANOPY
-  PROPOSED CANOPY

**canopy  
draft masterplan**



# DRAFT

For Stakeholder Advisory Committee Review only



### passive & active recreation facilities

- ⓐ senior soccer fields (2)
- ⓑ junior soccer fields (1)
- ⓒ cricket pitch (1)
- ⓓ baseball fields (3)
- ⓔ playgrounds (13)
- ⓕ youth pads (6)
- ⓖ public boat launches (4)
- ⓗ flex fields in the bar (20 acres)
- ⓘ bicycle and running trails (20km)

\*Note: Final recommendations on the precise list of elements and locations will be coming from City Parks.

### LOP Land-use

35%	PASSIVE	345 ac
10%	ACTIVE	100 ac
5%	BOATING	50 ac
50%	HABITAT	495 ac

### passive & active recreation draft masterplan



**December 5, 2007**

**DRAFT**

**For Stakeholder Advisory  
Committee Review only**

**PASSIVE**

**ACTIVE**

**BOATING**

**50% HABITAT**

**APPROX. 495 acres**

- **Wetlands**
- **Successional Meadows**
- **Deciduous Forest**
- **Swamp Forest**
- **Nesting Sites**

**December 5, 2007**

**DRAFT**

**For Stakeholder Advisory  
Committee Review only**

**35% PASSIVE**

**APPROX. 345 acres**

ACTIVE

BOATING

HABITAT

- **Open lawn areas**
- **Open meadow areas**
- **Paths, trails, boardwalks and piers**
- **Playgrounds**
- **Beaches**

**December 5, 2007**

**DRAFT**

**For Stakeholder Advisory  
Committee Review only**

- **Sport Fields**
- **Multi-use Fields**
- **Multi-use Trails**

PASSIVE

**10% ACTIVE**  
APPROX. **100 acres**  
BOATING

HABITAT



**December 5, 2007**

# **DRAFT**

**For Stakeholder Advisory  
Committee Review only**

- **Boat clubs**
- **Boat launches**
- **Boat docks**
- **Kayak & canoe landings**

PASSIVE

ACTIVE

**5% BOATING**  
**APPROX. 50 acres**

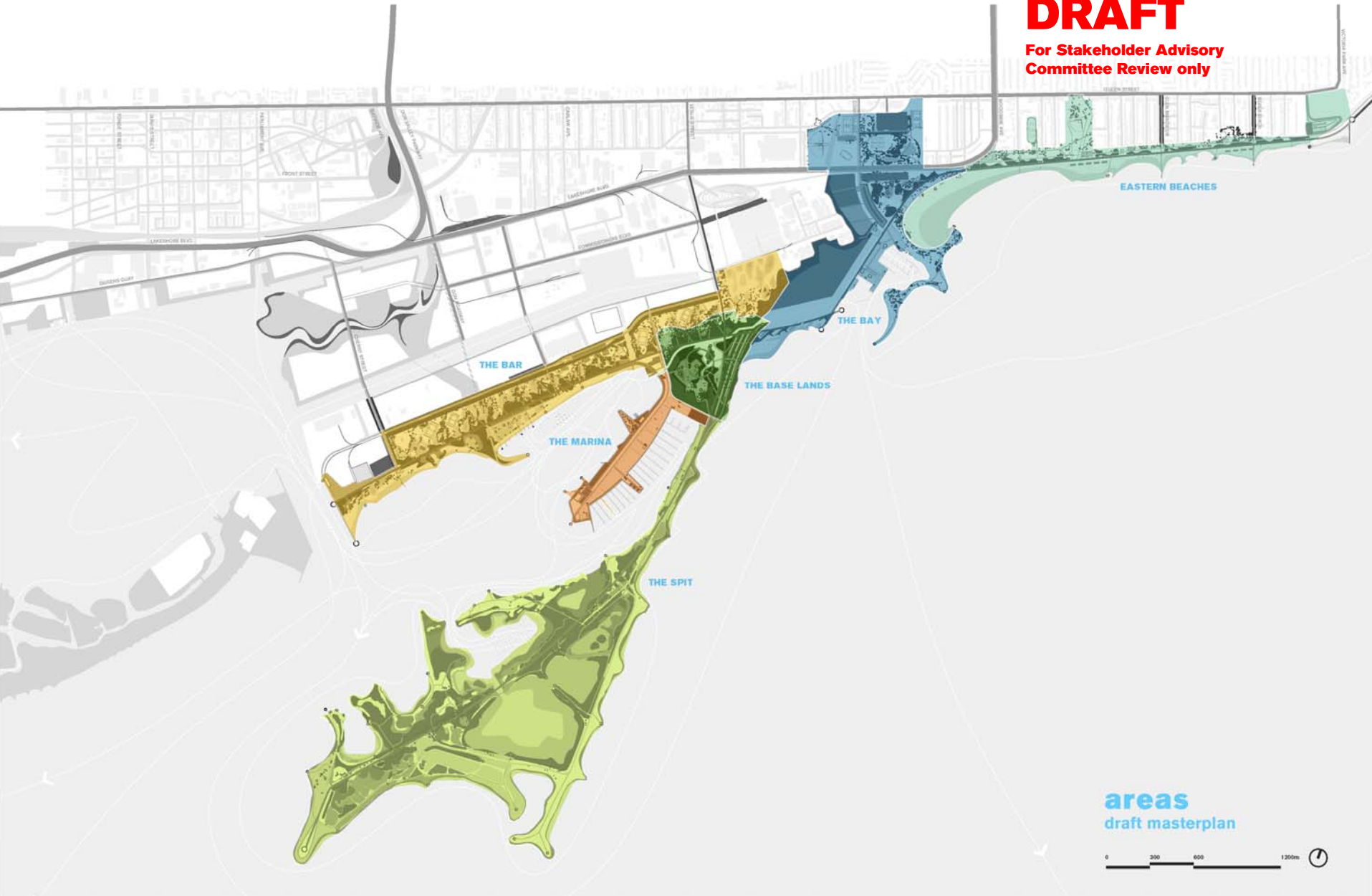
HABITAT



**December 5, 2007**

**DRAFT**

**For Stakeholder Advisory  
Committee Review only**



**areas**  
draft masterplan





# The Bay

- **Potential for recaptured bay and marsh**
- **Potential for relocating boat clubs in clean, protected waters**
- **Bridge connection from the Base Lands to Ashbridge's Bay Park**
- **Water quality improvements as a park design driver accessible filtration systems (treatment wetlands, Dunkers Flow systems)**

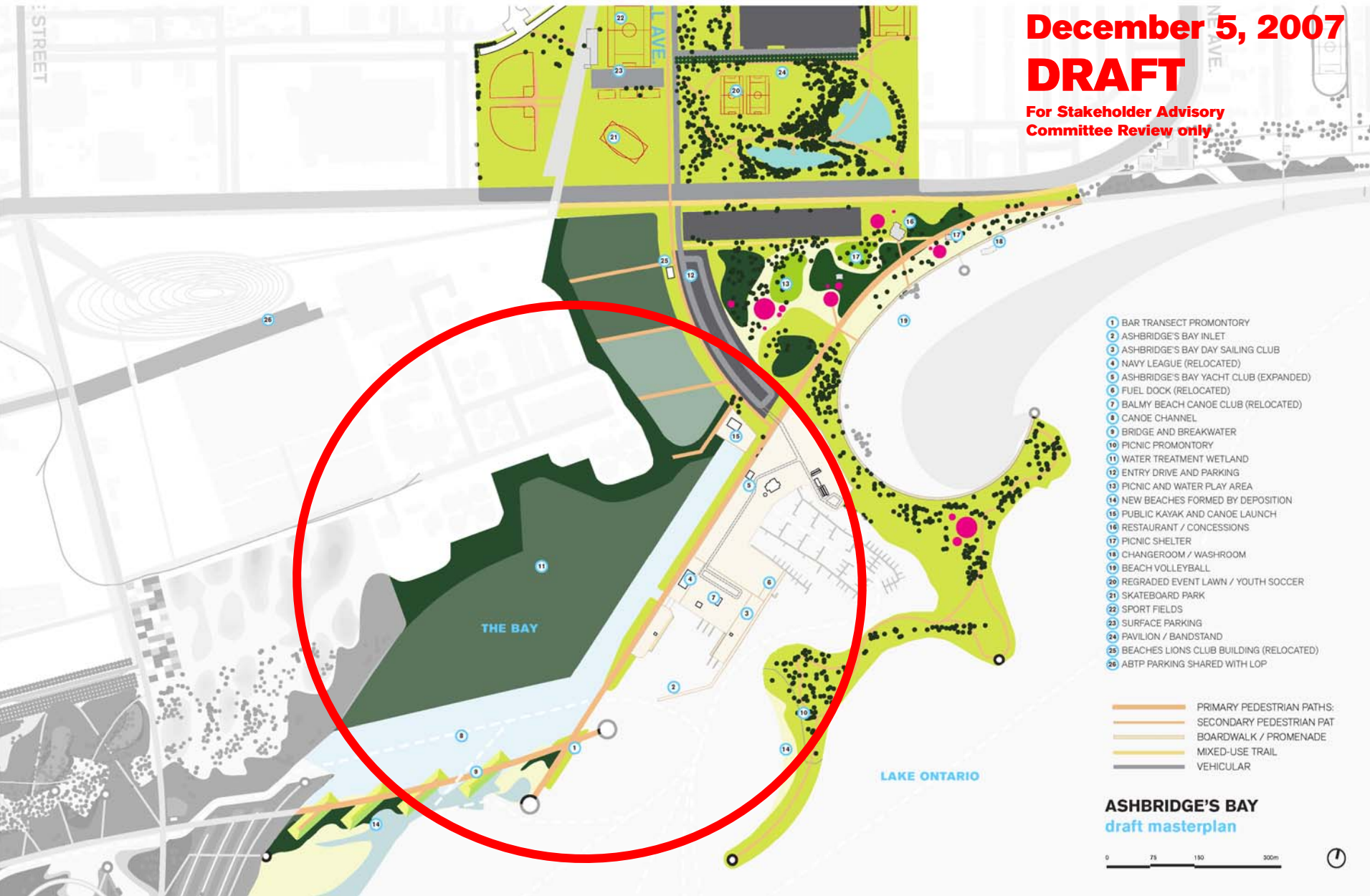
# Bridge, channel and filter wetland

East-west connection, 20-hectare green filter, protected watercourse and beach bars

**December 5, 2007**

**DRAFT**

**For Stakeholder Advisory  
Committee Review only**



# Bridge, channel and filter wetland

East-west connection, 20-hectare green filter, protected watercourse and beach bars

**December 5, 2007**

**DRAFT**

**For Stakeholder Advisory  
Committee Review only**



**ASHBRIDGE'S BAY**  
draft masterplan



**December 5, 2007**

**DRAFT**

**For Stakeholder Advisory  
Committee Review only**

**vegetated stormwater filter**

**December 5, 2007**

**DRAFT**

**For Stakeholder Advisory  
Committee Review only**

**a new, green landmark**

**December 5, 2007**

**DRAFT**

**For Stakeholder Advisory  
Committee Review only**

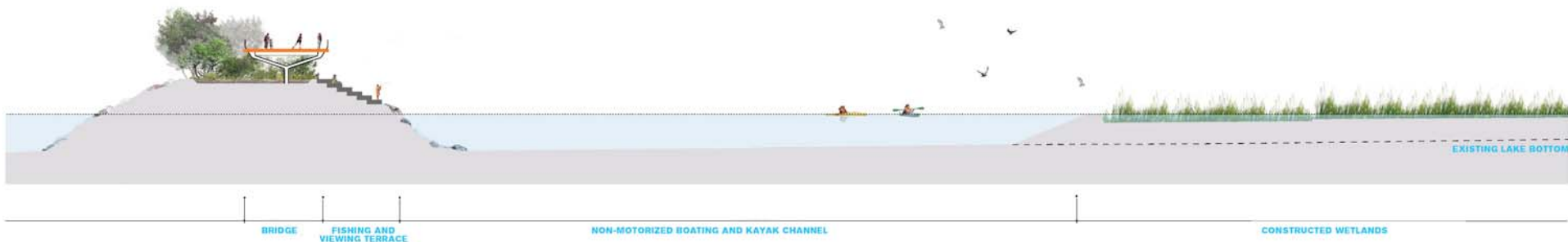


**ecologically rich and eventful**

**December 5, 2007**

**DRAFT**

**For Stakeholder Advisory  
Committee Review only**



**December 5, 2007**

**DRAFT**

**For Stakeholder Advisory  
Committee Review only**



**bridge and island detail**



**December 5, 2007**

**DRAFT**

**For Stakeholder Advisory  
Committee Review only**



**bay bridge, watercourse and wetland**

**December 5, 2007**

**DRAFT**

**For Stakeholder Advisory  
Committee Review only**



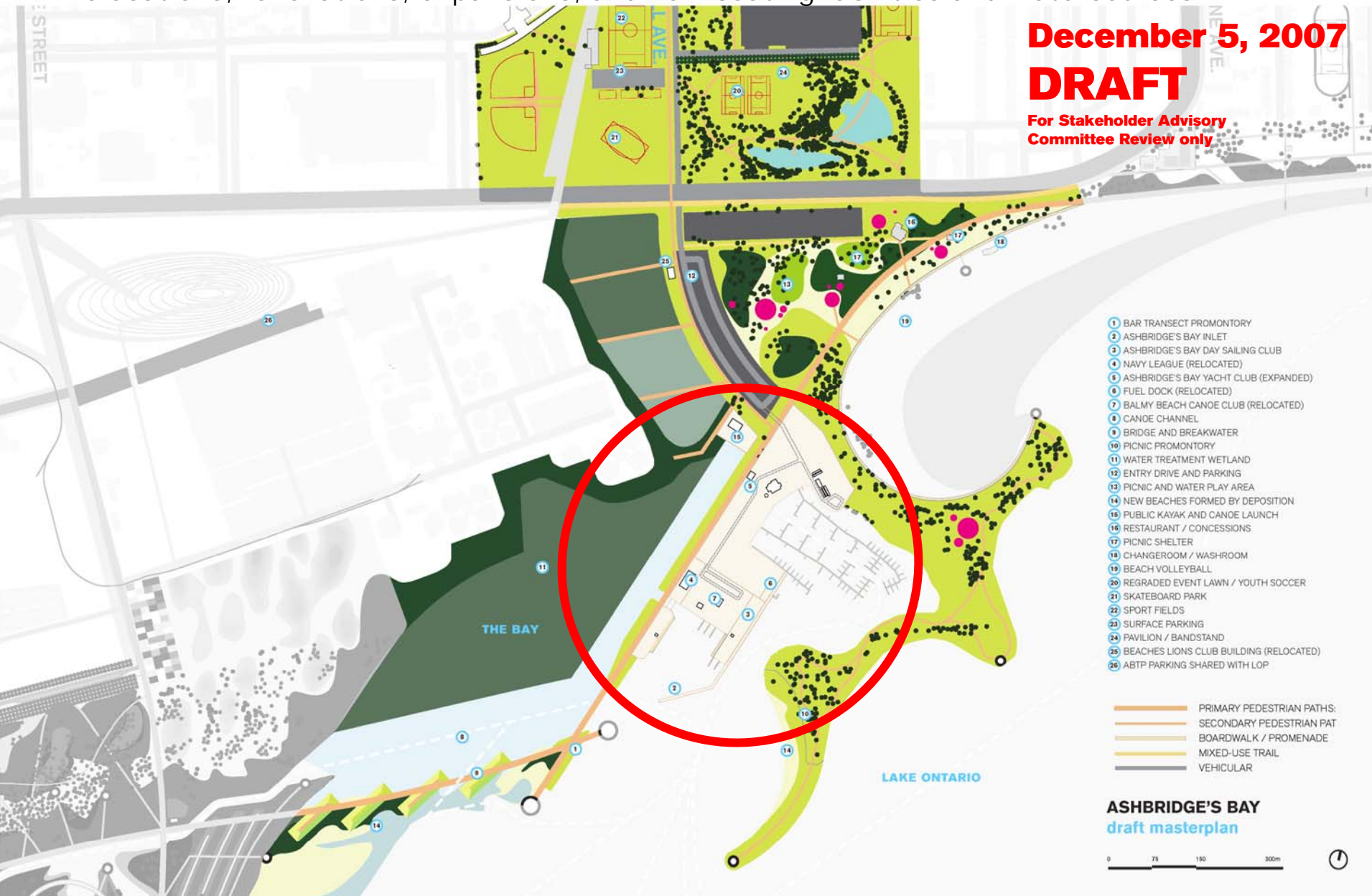
**bay bridge, islands and beach bars**

# Ashbridge's Bay Boat Clubs

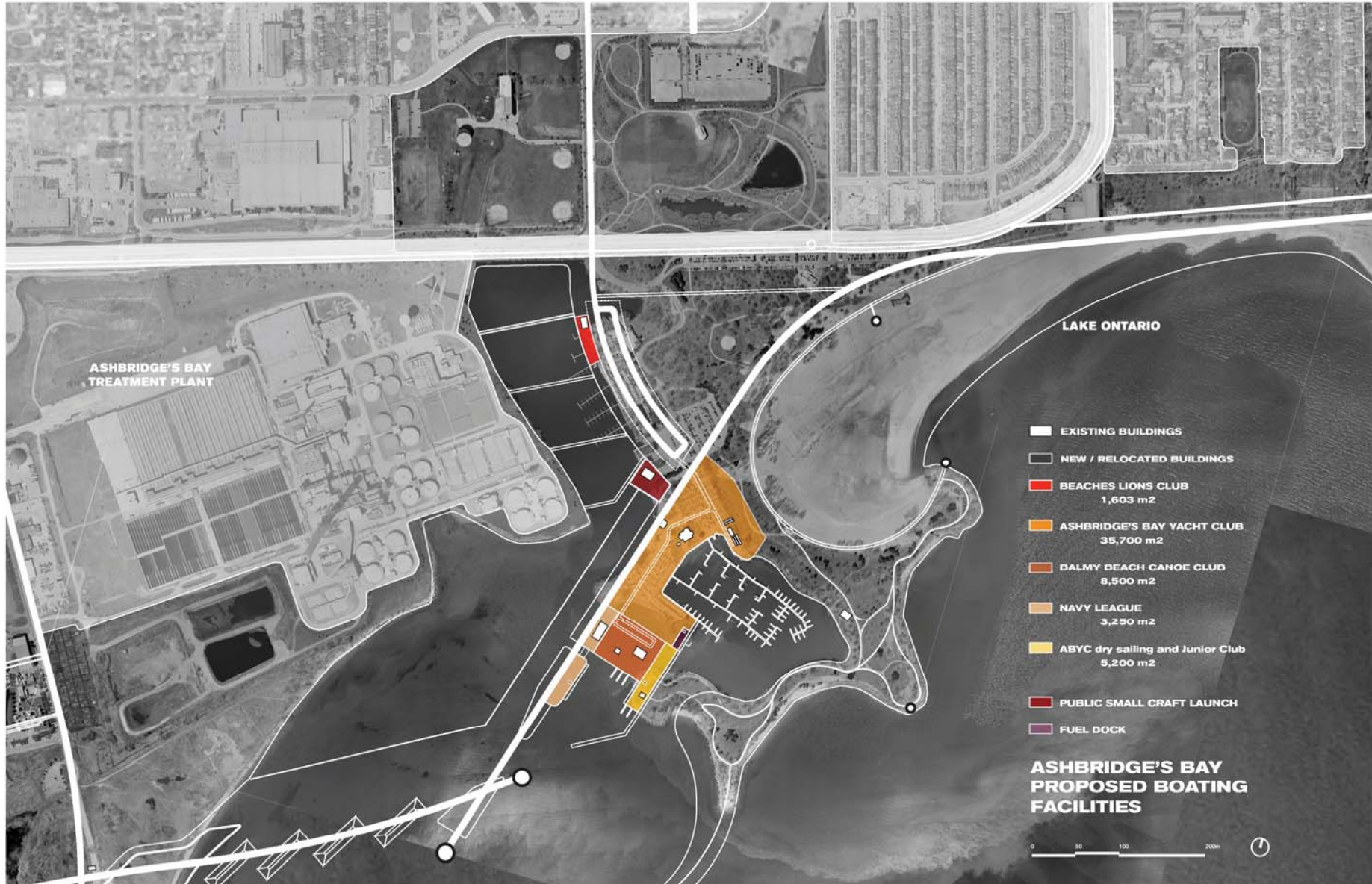
Relocations, renovations, expansions, and new boating facilities and watercourses

**December 5, 2007**  
**DRAFT**

**For Stakeholder Advisory  
Committee Review only**







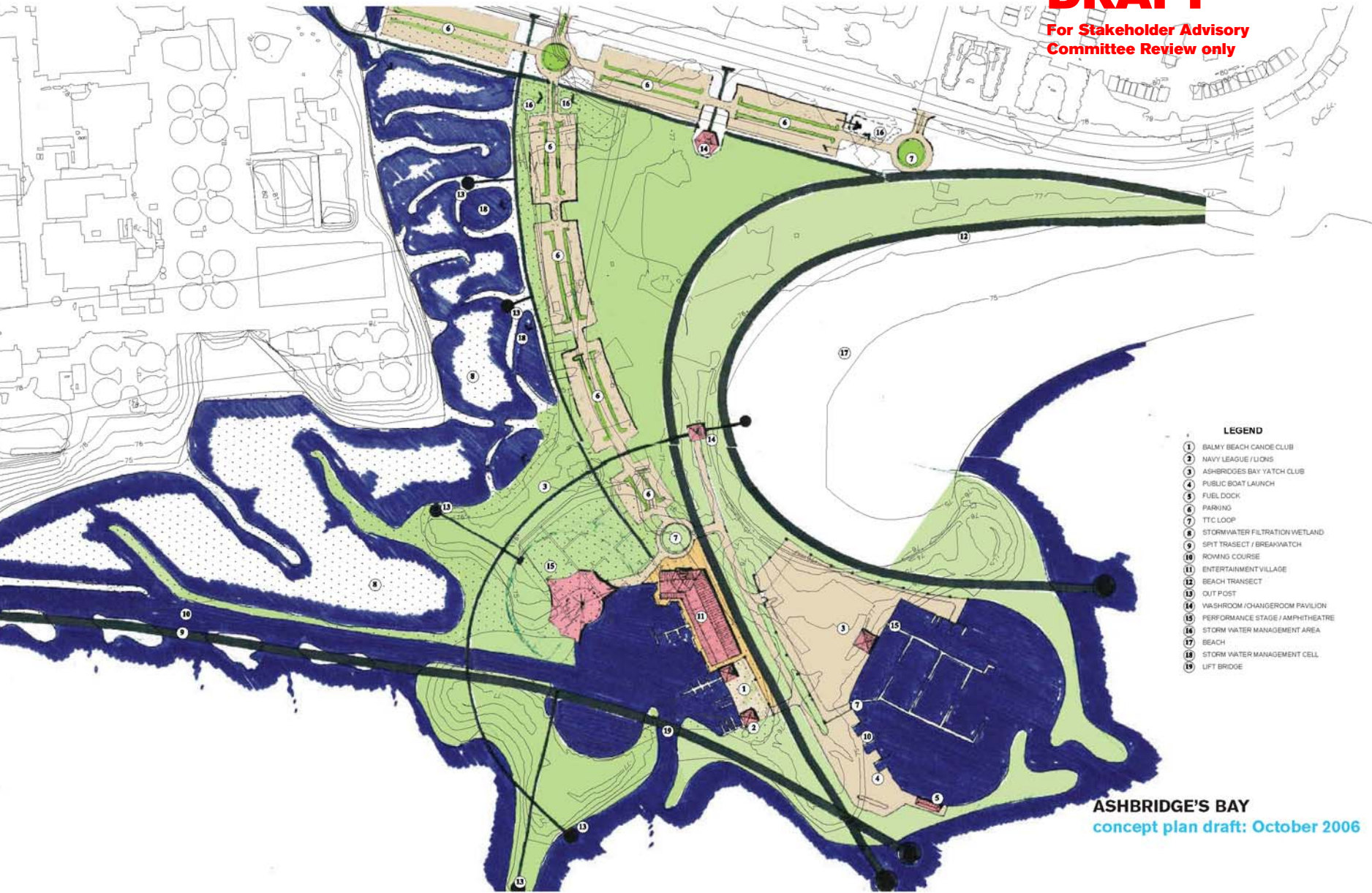
the bay

previous design configurations

**December 5, 2007**

**DRAFT**

**For Stakeholder Advisory  
Committee Review only**



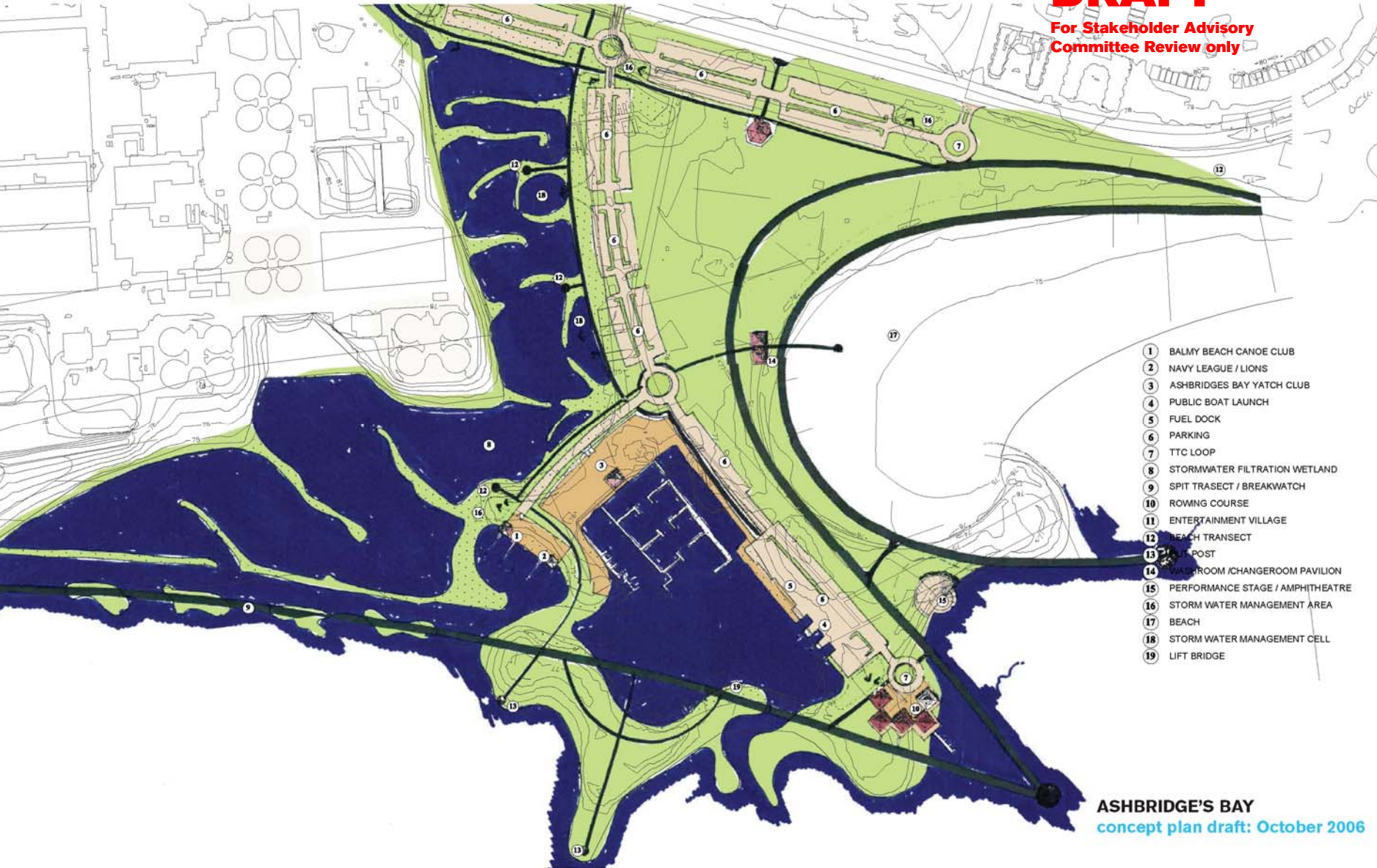
- LEGEND**
- 1 BALMY BEACH CANOE CLUB
  - 2 NAVY LEAGUE / LIONS
  - 3 ASHBRIDGES BAY YATCH CLUB
  - 4 PUBLIC BOAT LAUNCH
  - 5 FUEL DOCK
  - 6 PARKING
  - 7 TTC LOOP
  - 8 STORMWATER FILTRATION WETLAND
  - 9 SPIT TRASECT / BREAKWATCH
  - 10 ROWING COURSE
  - 11 ENTERTAINMENT VILLAGE
  - 12 BEACH TRANSECT
  - 13 OUT POST
  - 14 WASHROOM / CHANGEROOM PAVILION
  - 15 PERFORMANCE STAGE / AMPHITHEATRE
  - 16 STORM WATER MANAGEMENT AREA
  - 17 BEACH
  - 18 STORM WATER MANAGEMENT CELL
  - 19 LIFT BRIDGE

**ASHBRIDGE'S BAY**  
concept plan draft: October 2006

**December 5, 2007**

**DRAFT**

**For Stakeholder Advisory  
Committee Review only**



- ① BALMY BEACH CANOE CLUB
- ② NAVY LEAGUE / LIONS
- ③ ASHBRIDGES BAY YATCH CLUB
- ④ PUBLIC BOAT LAUNCH
- ⑤ FUEL DOCK
- ⑥ PARKING
- ⑦ TTC LOOP
- ⑧ STORMWATER FILTRATION WETLAND
- ⑨ SPIT TRASECT / BREAKWATCH
- ⑩ ROWING COURSE
- ⑪ ENTERTAINMENT VILLAGE
- ⑫ BEACH TRASECT
- ⑬ POST
- ⑭ WASHROOM /CHANGEROOM PAVILION
- ⑮ PERFORMANCE STAGE / AMPHITHEATRE
- ⑯ STORM WATER MANAGEMENT AREA
- ⑰ BEACH
- ⑱ STORM WATER MANAGEMENT CELL
- ⑲ LIFT BRIDGE

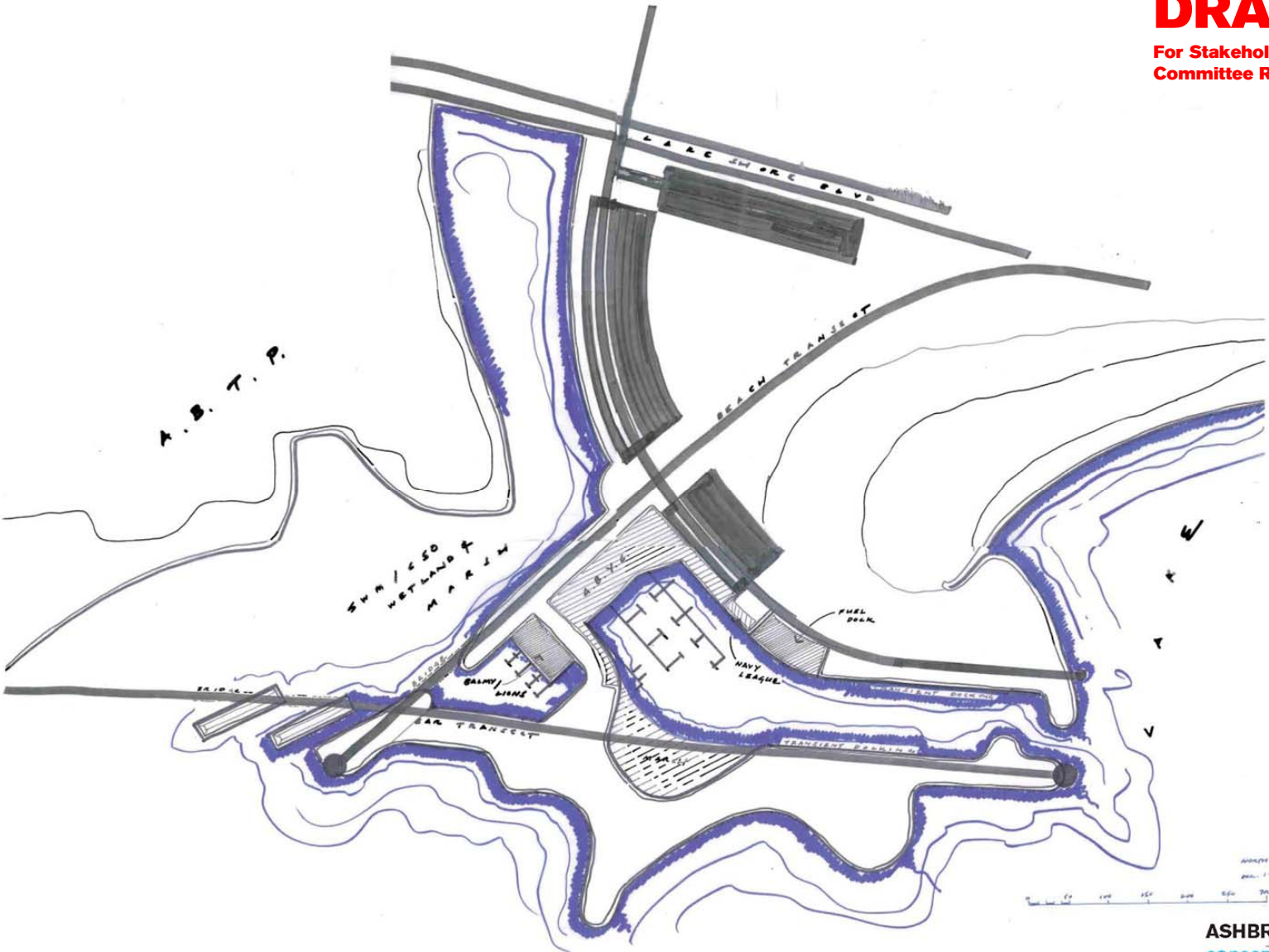
**ASHBRIDGE'S BAY**  
concept plan draft: October 2006



December 5, 2007

**DRAFT**

For Stakeholder Advisory  
Committee Review only

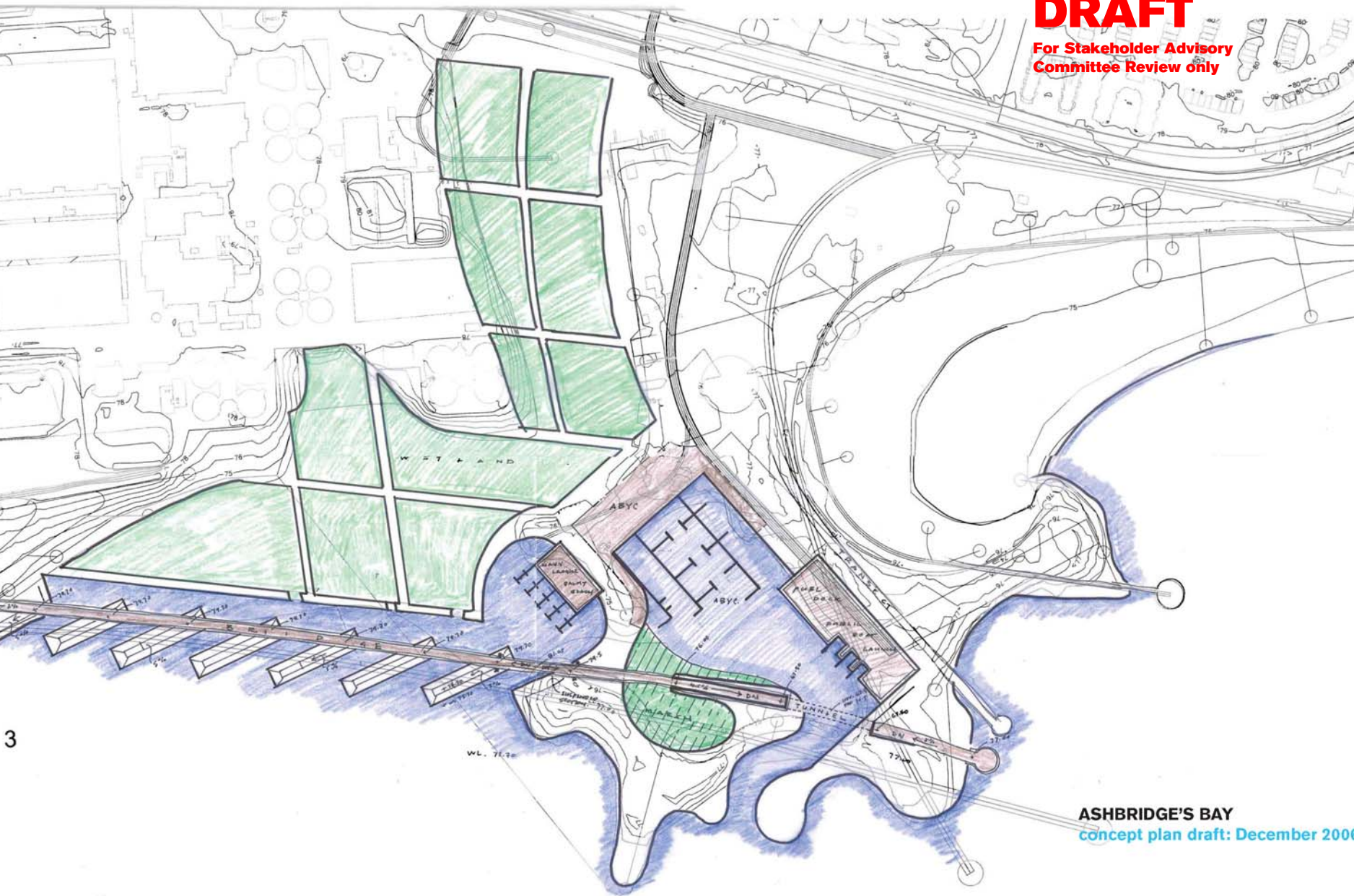


ASHBRIDGE'S BAY  
concept plan draft: December 2006

**December 5, 2007**

**DRAFT**

**For Stakeholder Advisory  
Committee Review only**



3

**ASHBRIDGE'S BAY**  
concept plan draft: December 2006

**December 5, 2007**

**DRAFT**

**For Stakeholder Advisory  
Committee Review only**



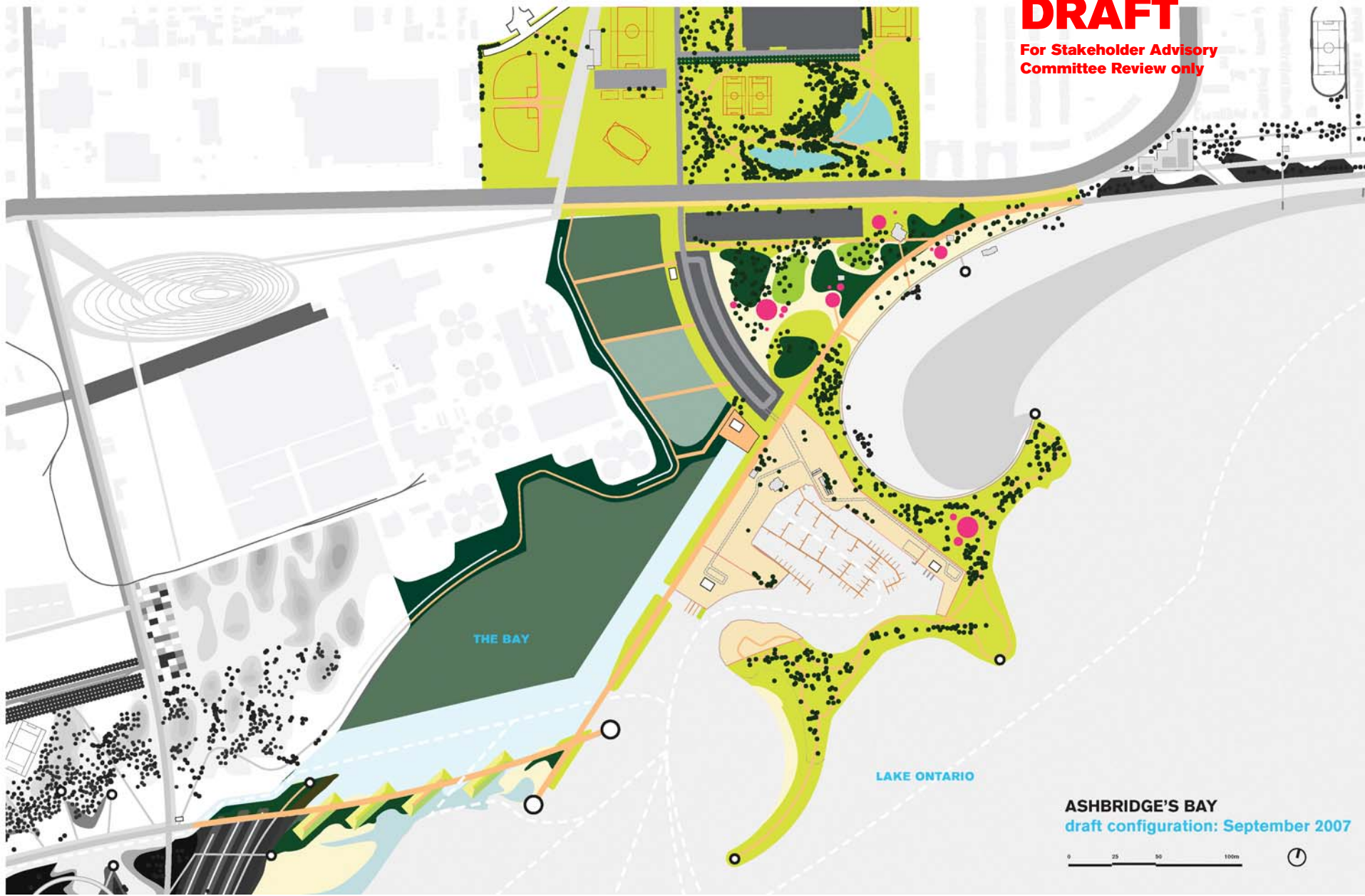
**ASHBRIDGE'S BAY**  
concept plan: January 2007



**December 5, 2007**

**DRAFT**

**For Stakeholder Advisory  
Committee Review only**



THE BAY

LAKE ONTARIO

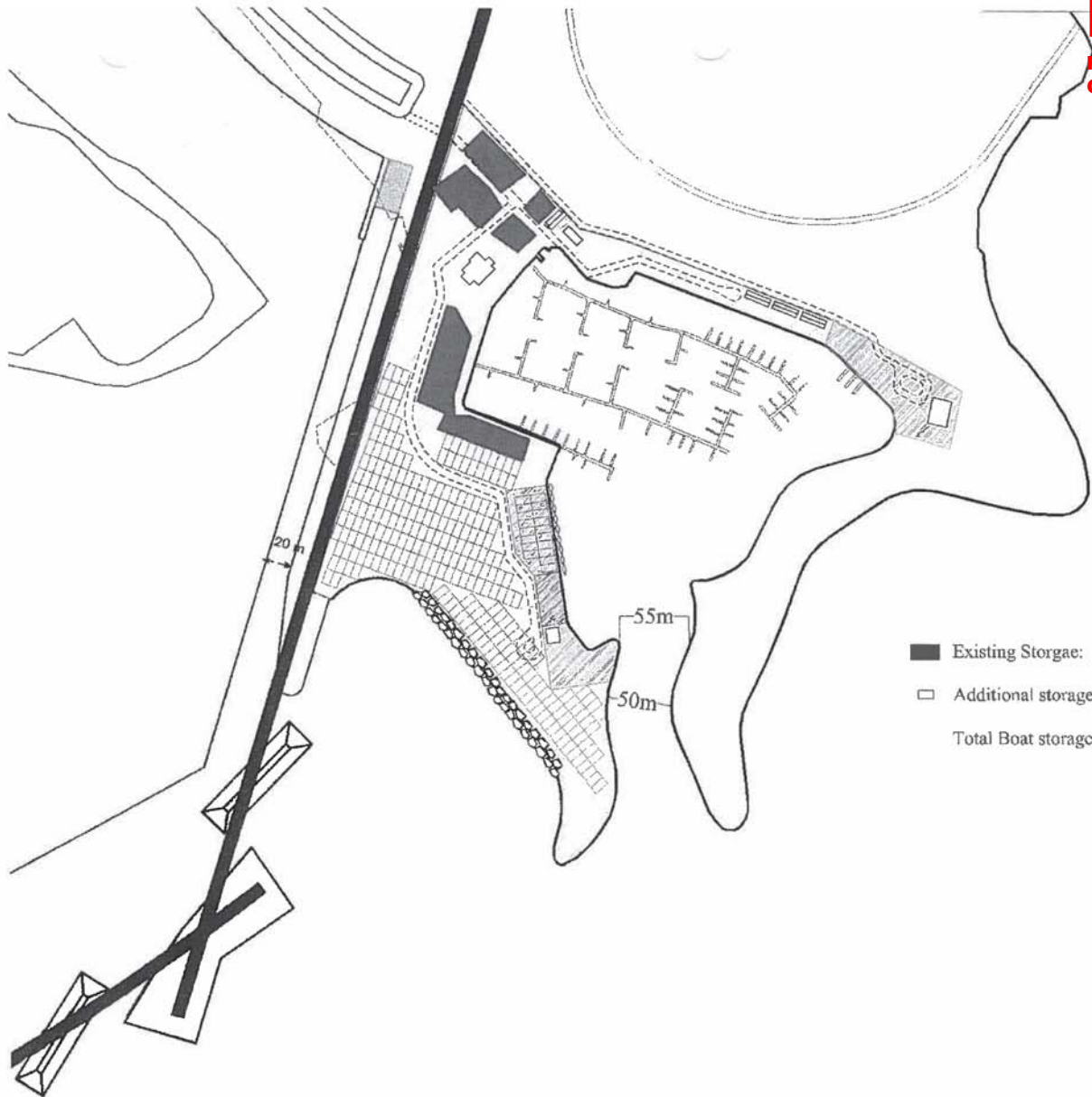
**ASHBRIDGE'S BAY**  
draft configuration: September 2007



**December 5, 2007**

**DRAFT**

**For Stakeholder Advisory  
Committee Review only**



- Existing Storage: Approx. 150 Boats
- Additional storage: 75m<sup>2</sup> per boat = 280 boats
- Total Boat storage: 430 Boats

**ASHBRIDGE'S BAY**  
ABYC sketch: October 2007

# Bridge, channel and filter wetland

East-west connection, 20-hectare green filter, protected watercourse and beach bars

**December 5, 2007**  
**DRAFT**

**For Stakeholder Advisory  
Committee Review only**



**December 5, 2007**

**DRAFT**

**For Stakeholder Advisory  
Committee Review only**



**bay bridge, watercourse and wetland**

**December 5, 2007**

**DRAFT**

**For Stakeholder Advisory  
Committee Review only**

**lake ontario park  
will be:**



# a regional greenway and green waterfront

December 5, 2007

**DRAFT**

For Stakeholder Advisory  
Committee Review only



*Humber Valley*

*Don Valley*

*Lake Ontario Park*



**December 5, 2007**

**DRAFT**

**For Stakeholder Advisory  
Committee Review only**



**▪ world class, signature park for  
the whole city**

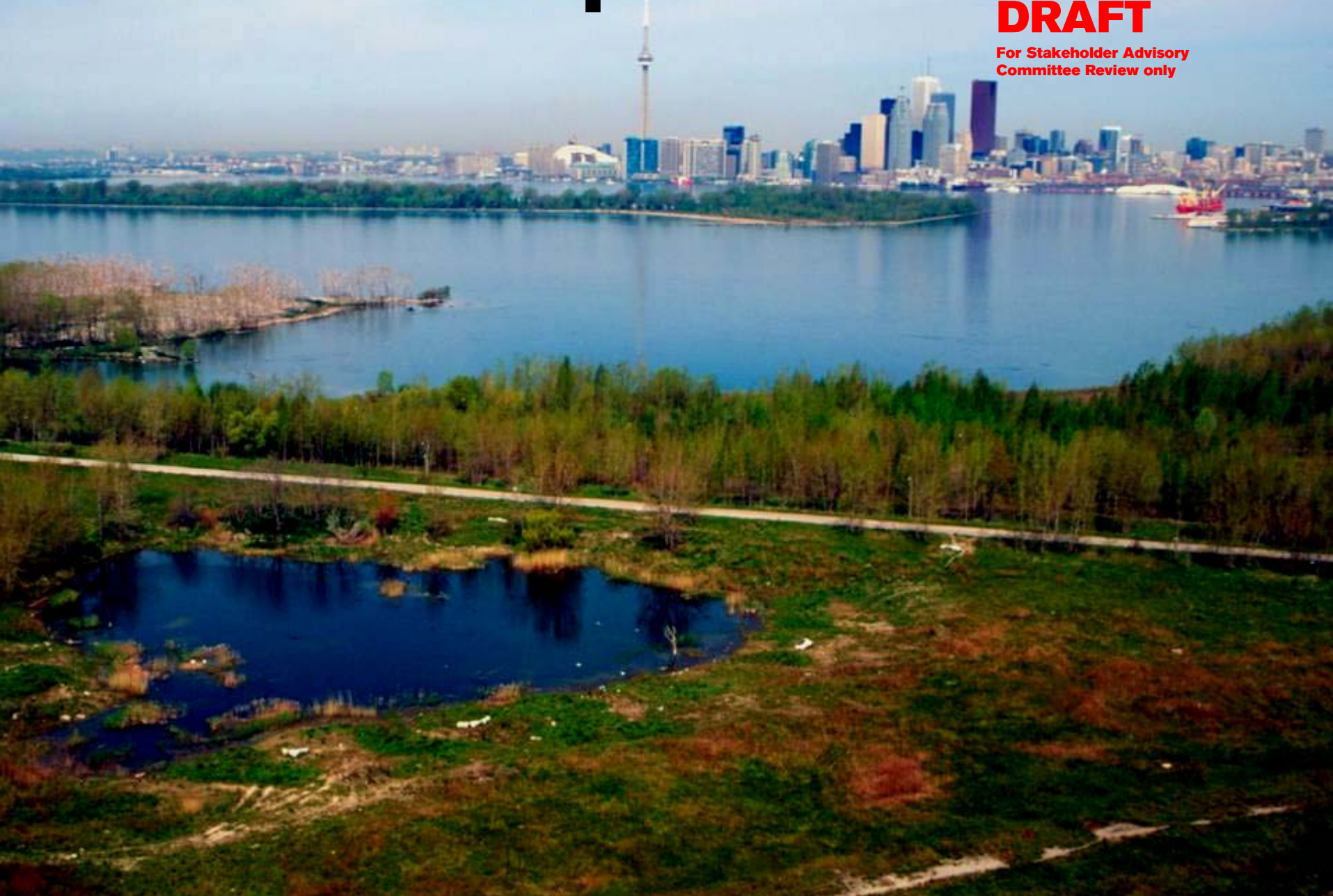


# ▪ wild landscapes

**December 5, 2007**

**DRAFT**

**For Stakeholder Advisory  
Committee Review only**



**December 5, 2007**

**DRAFT**

**For Stakeholder Advisory  
Committee Review only**

▪ **vibrant lakefront**



December 5, 2007

**DRAFT**

For Stakeholder Advisory  
Committee Review only

- **“big nature,” water sports,  
recreation and culture**

