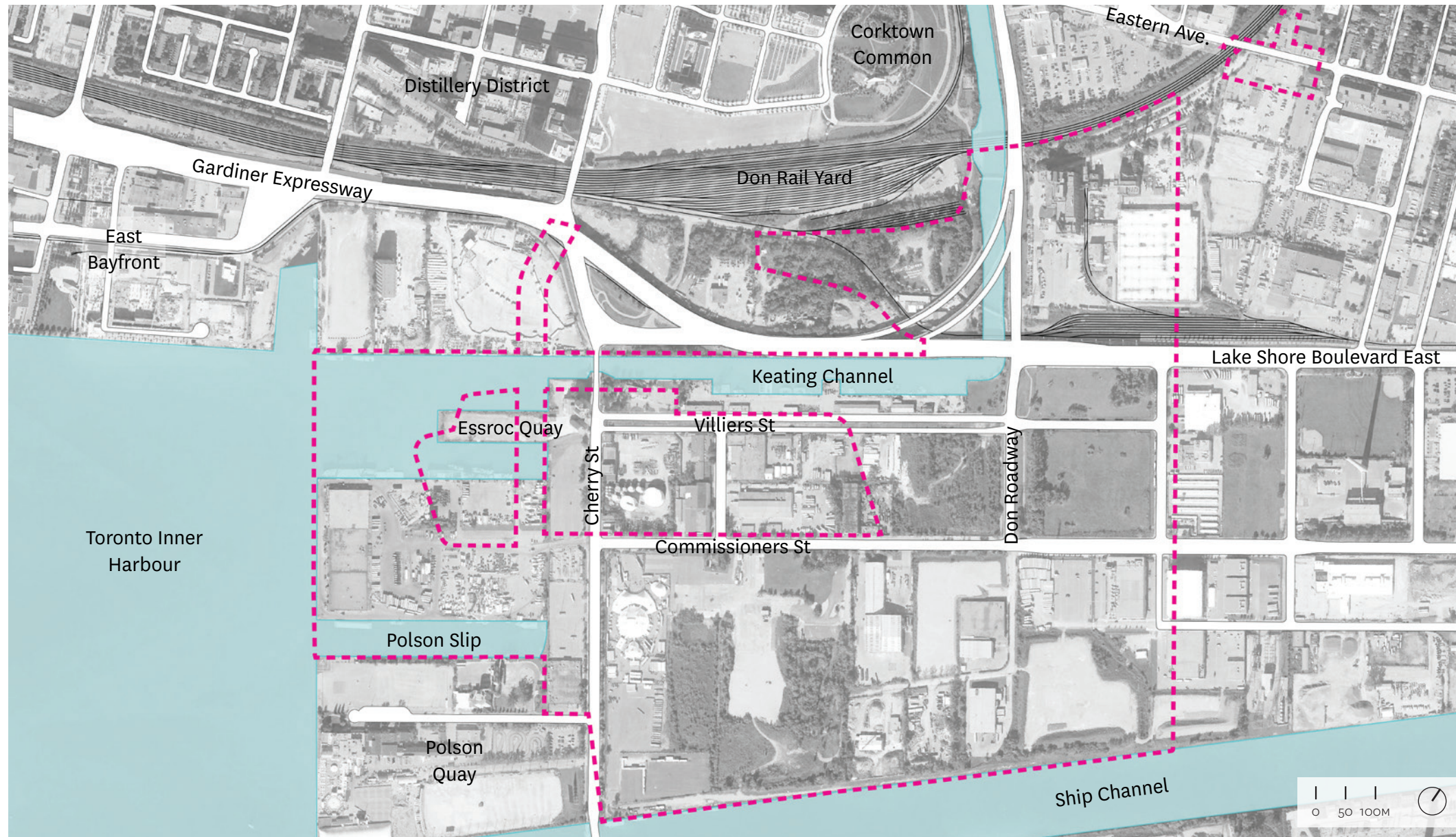


Port Lands Flood Protection & Enabling Infrastructure Community Meeting

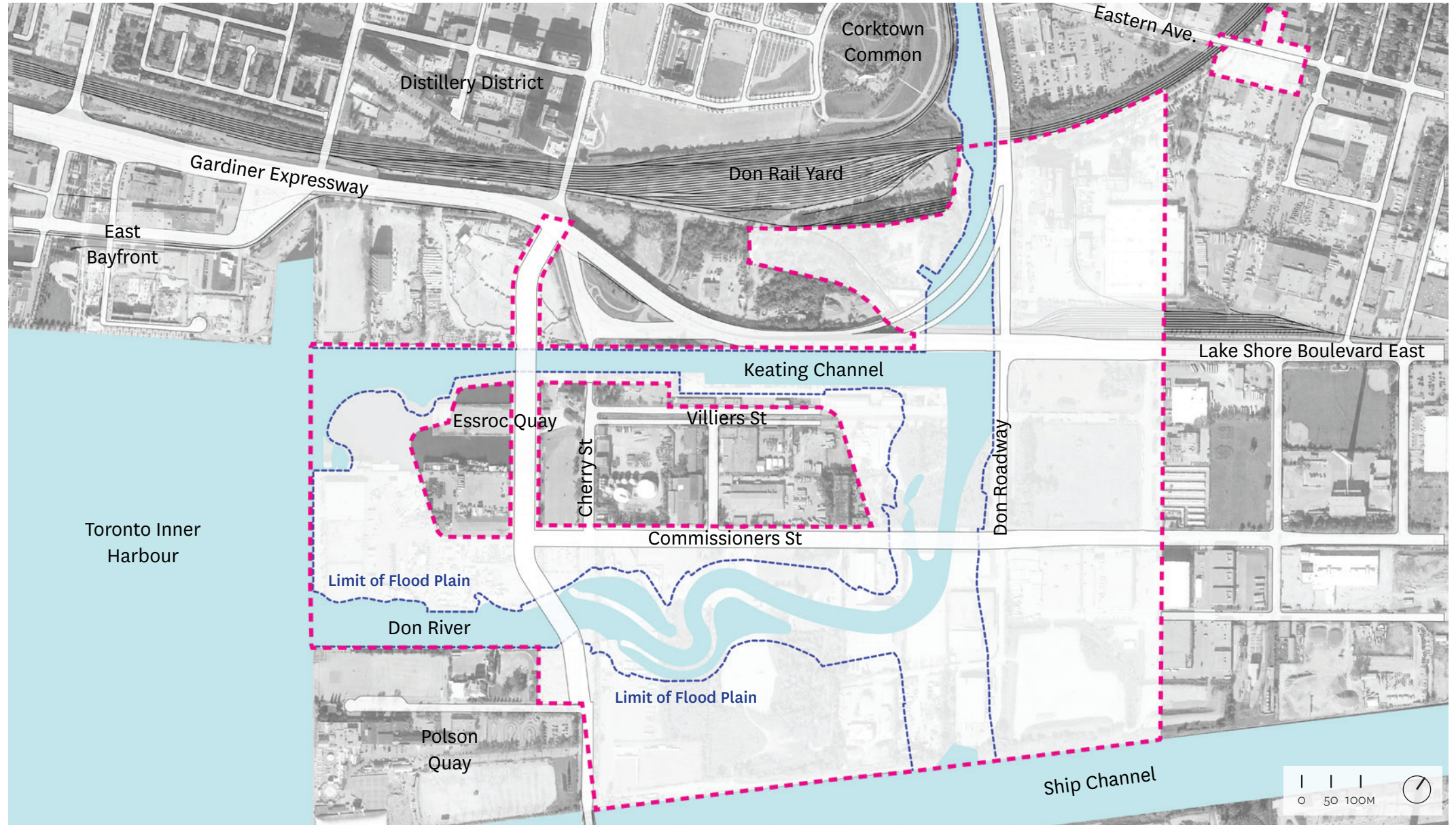
22 February 2018

Michael Van Valkenburgh Associates, Inc.
Landscape Architects

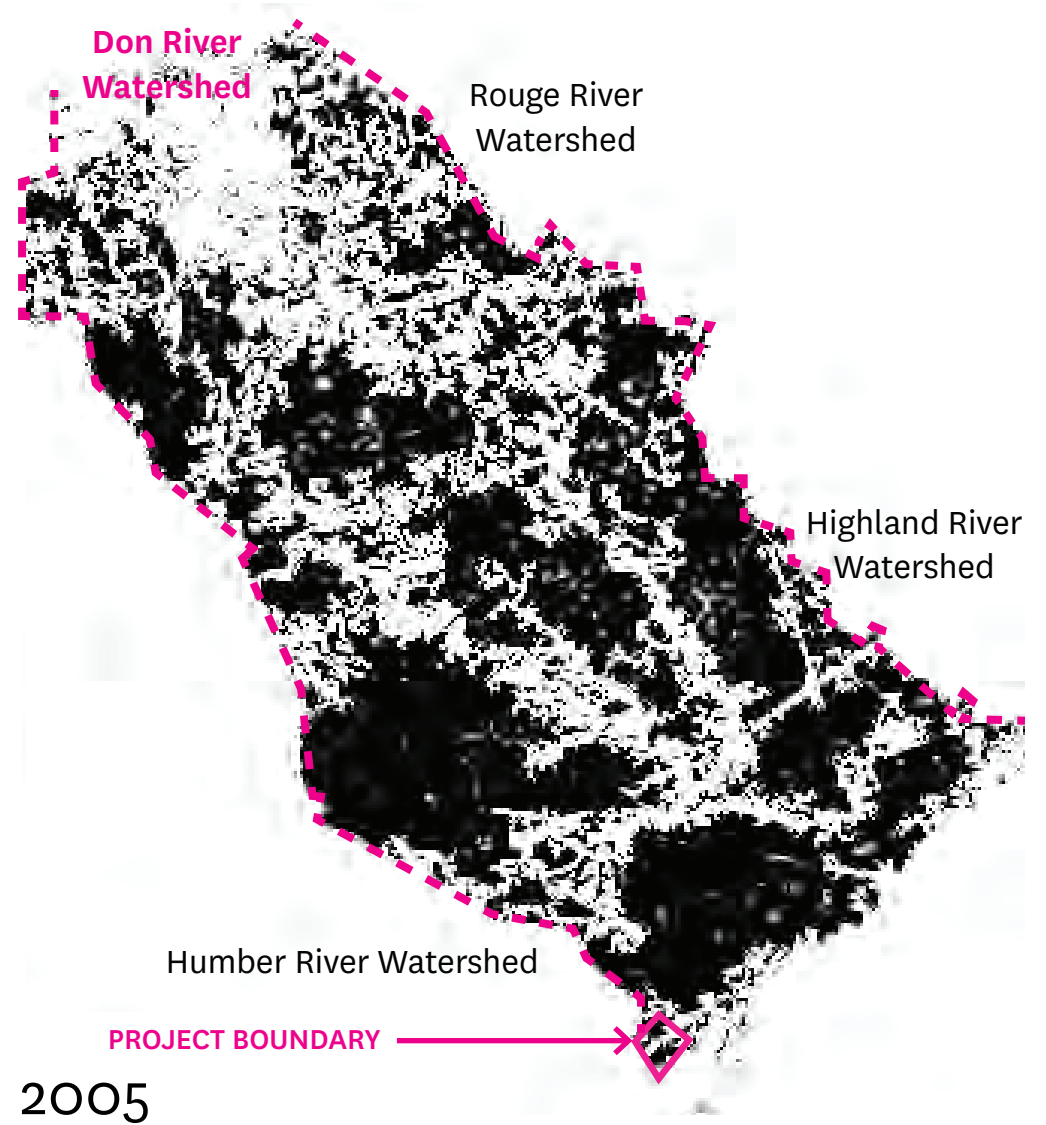
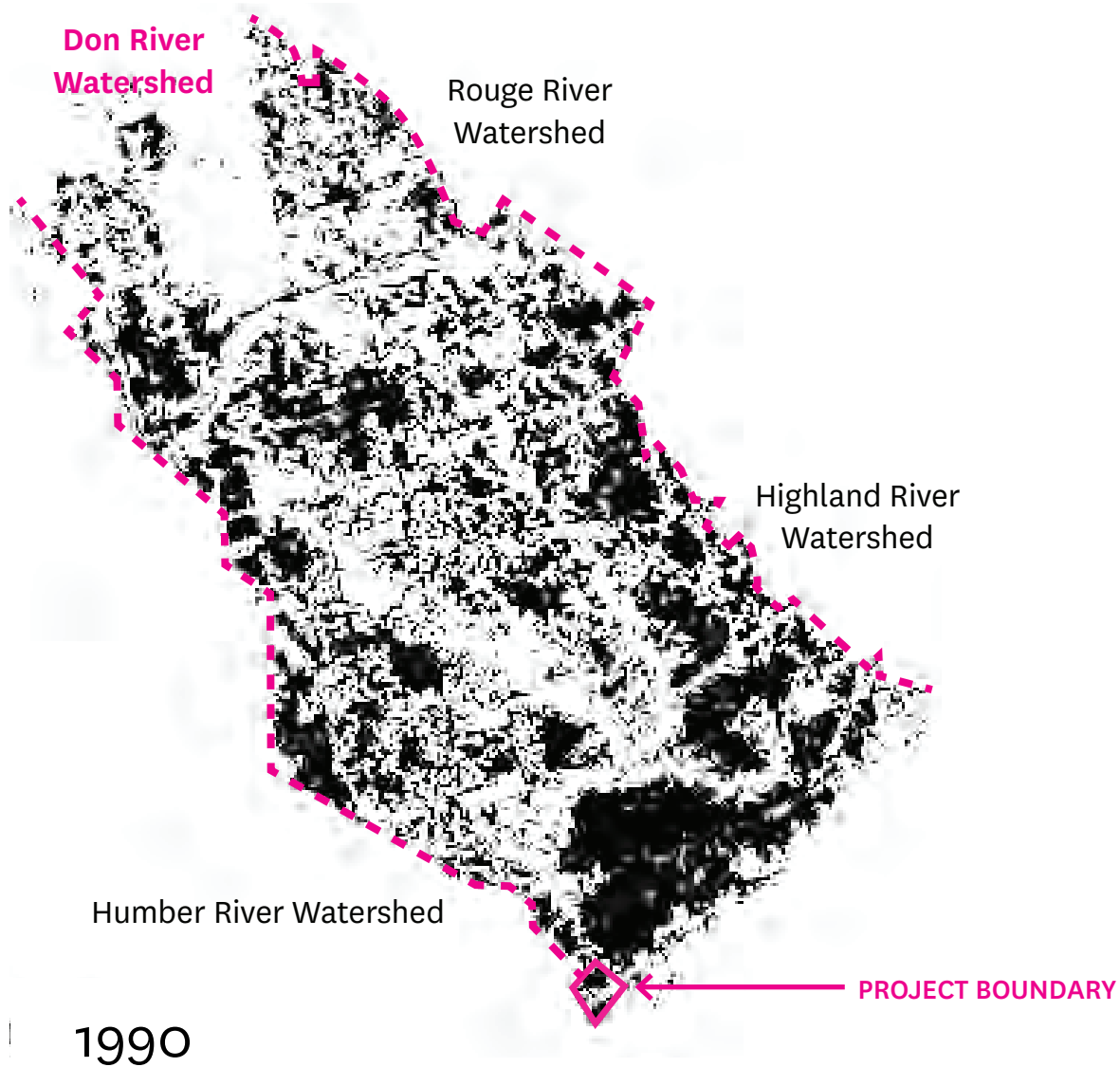
Project Area - Flood Protection Extents



Project Area - Flood Plain Boundary



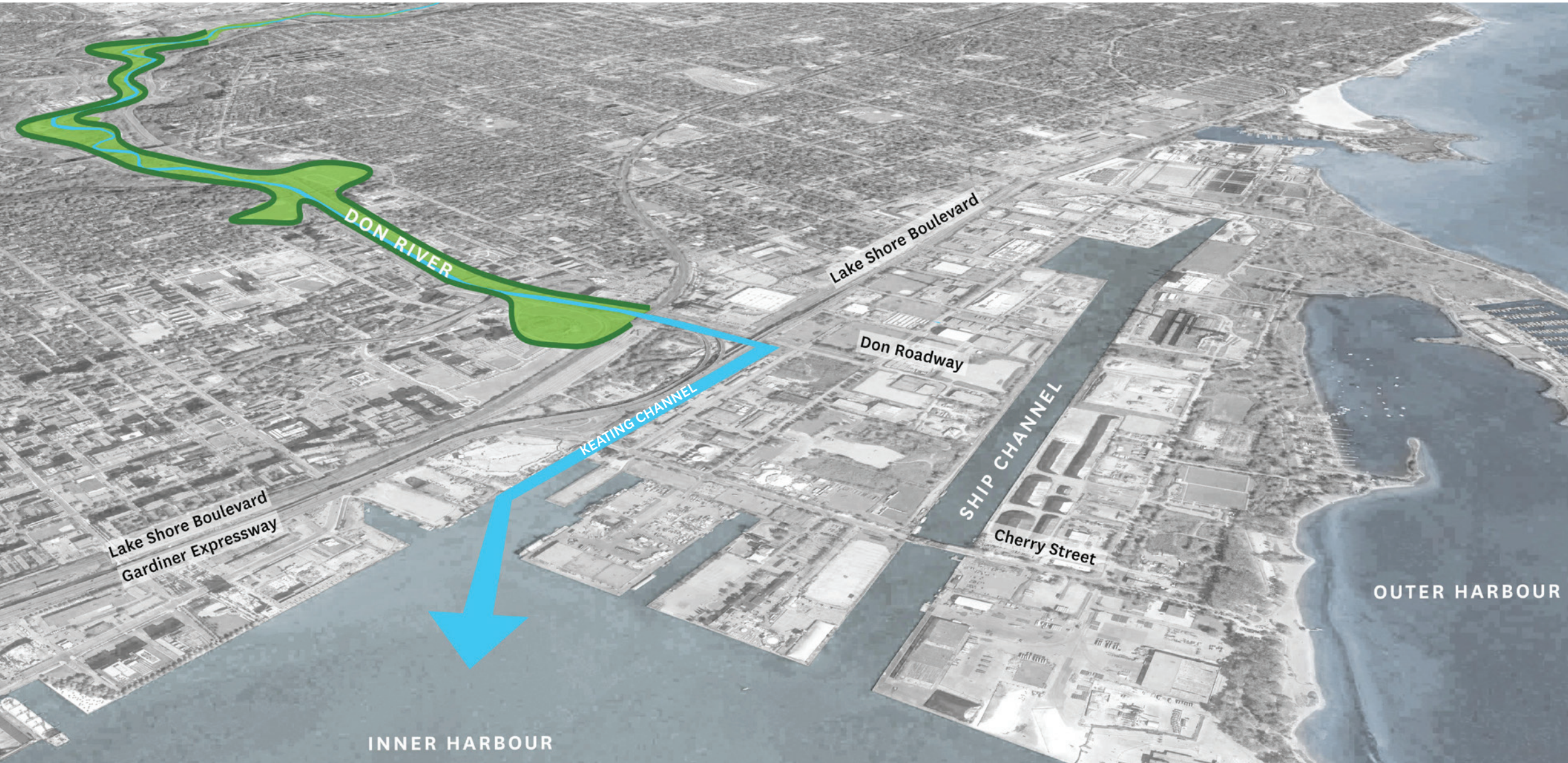
Impervious Surface in the Don River Watershed



Flood Model of Existing Conditions During Regulatory Flood Event



Respond to the Don River's Existing Conditions



DON RIVER

KEATING CHANNEL

SHIP CHANNEL

OUTER HARBOUR

INNER HARBOUR

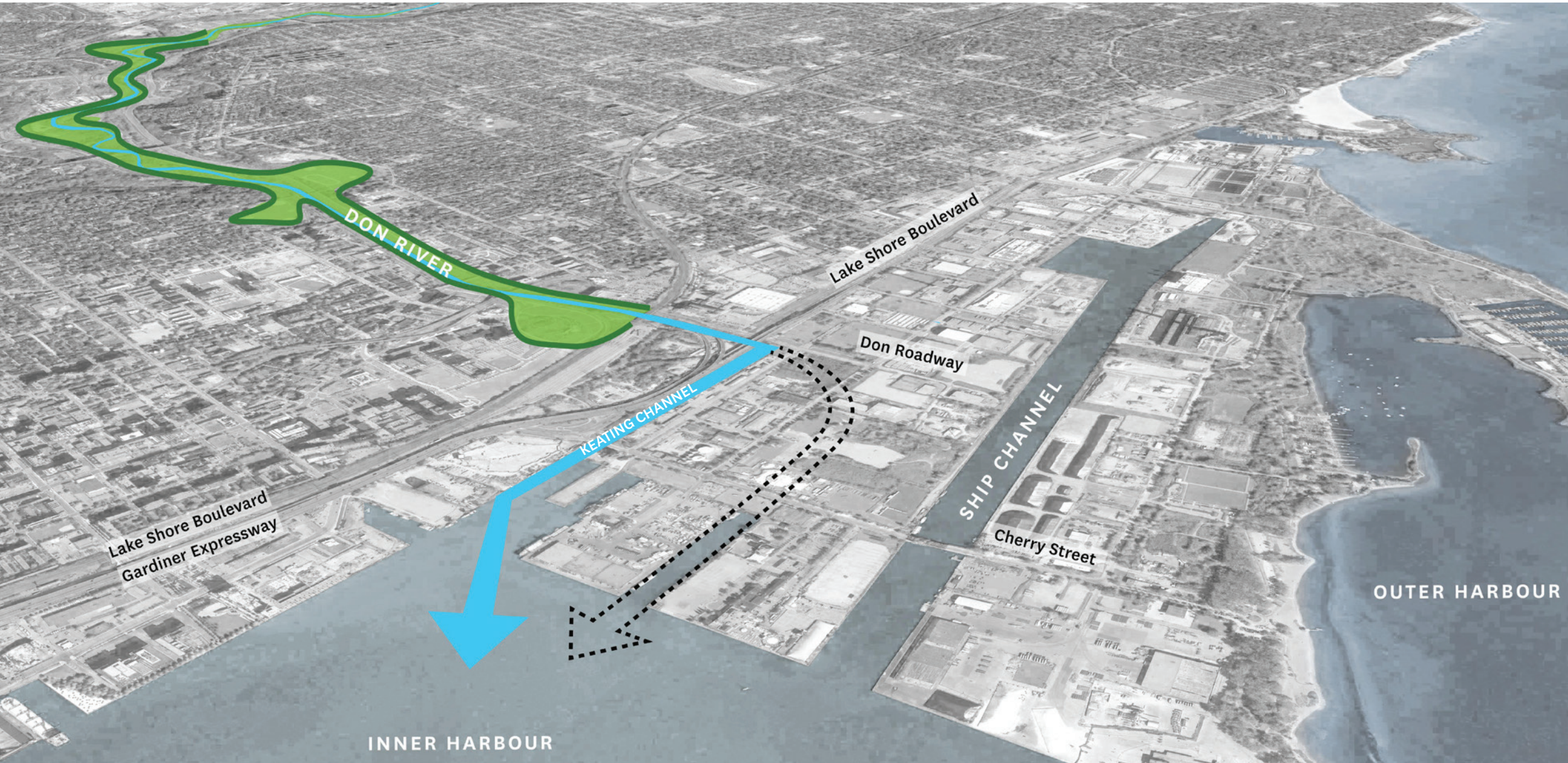
Lake Shore Boulevard

Don Roadway

Cherry Street

Lake Shore Boulevard
Gardiner Expressway

Redirect the Don River



Allow the New River to Structure the Urban Form



Achieve Flood Protection Through a Three-Tier System



Project Area - Full Vision Including Adjacent Neighbourhoods



The Fundamental Challenge

Finding a **Coherent** and **Integrated** solution;

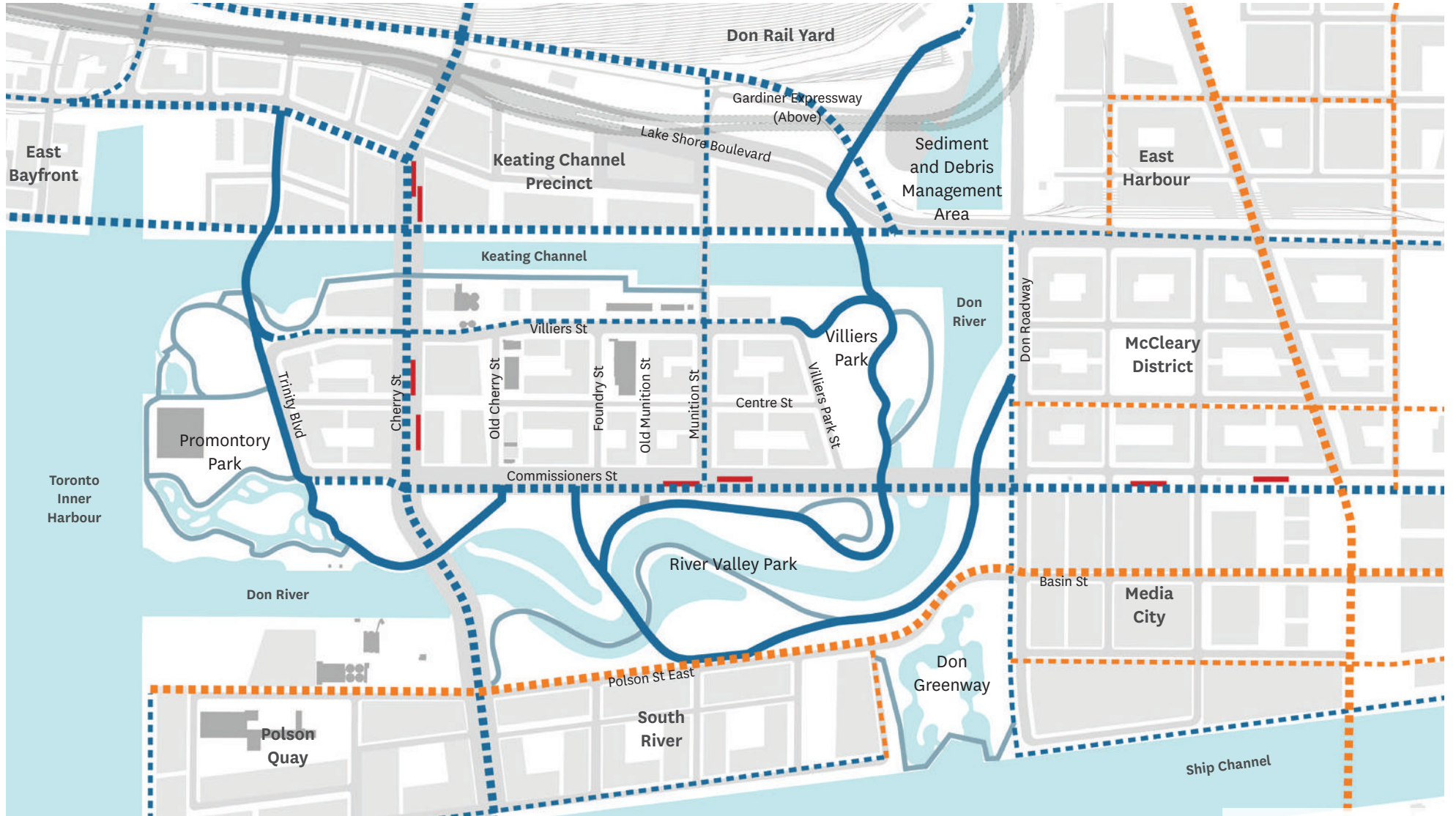
Flood Control
Naturalization
Place Making

6 Big Moves

1. Connected to the Urban Context

Legend

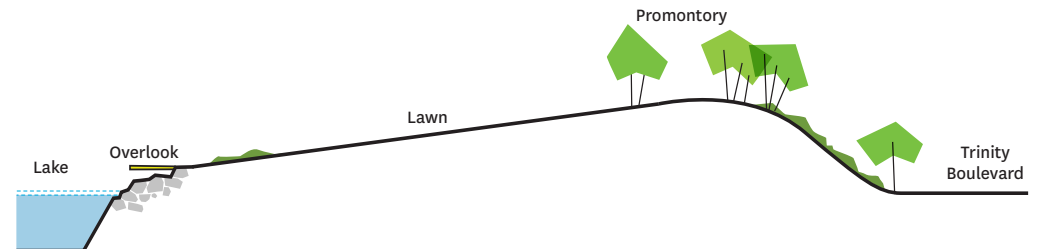
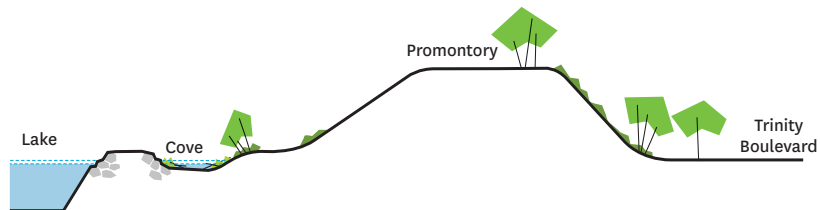
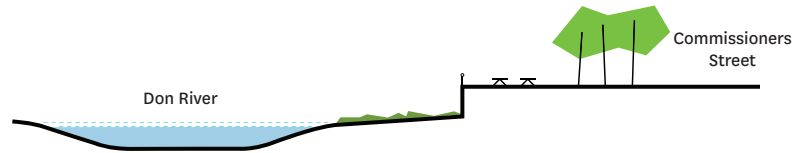
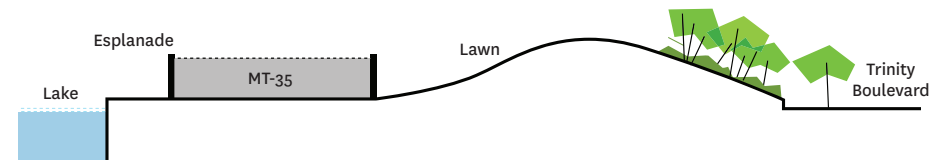
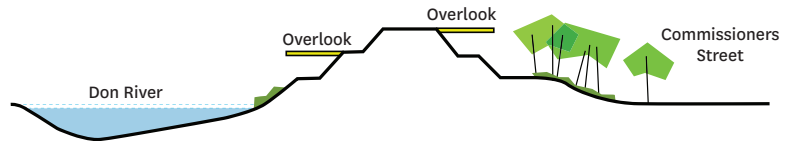
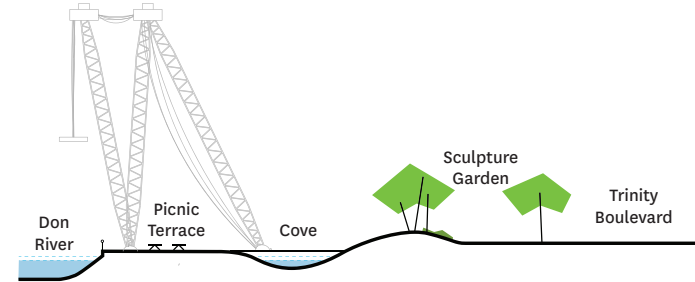
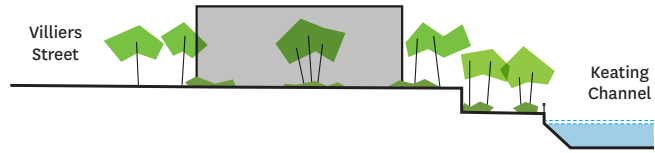
- City Primary Cycle Track
- City Secondary Cycle Track
- City Primary Multi-use Trail
- City Secondary Multi-use Trail
- Proposed Primary Park Trail
- Proposed Secondary Park Trail
- LRT Station



2. Accommodate the Needs of the Community



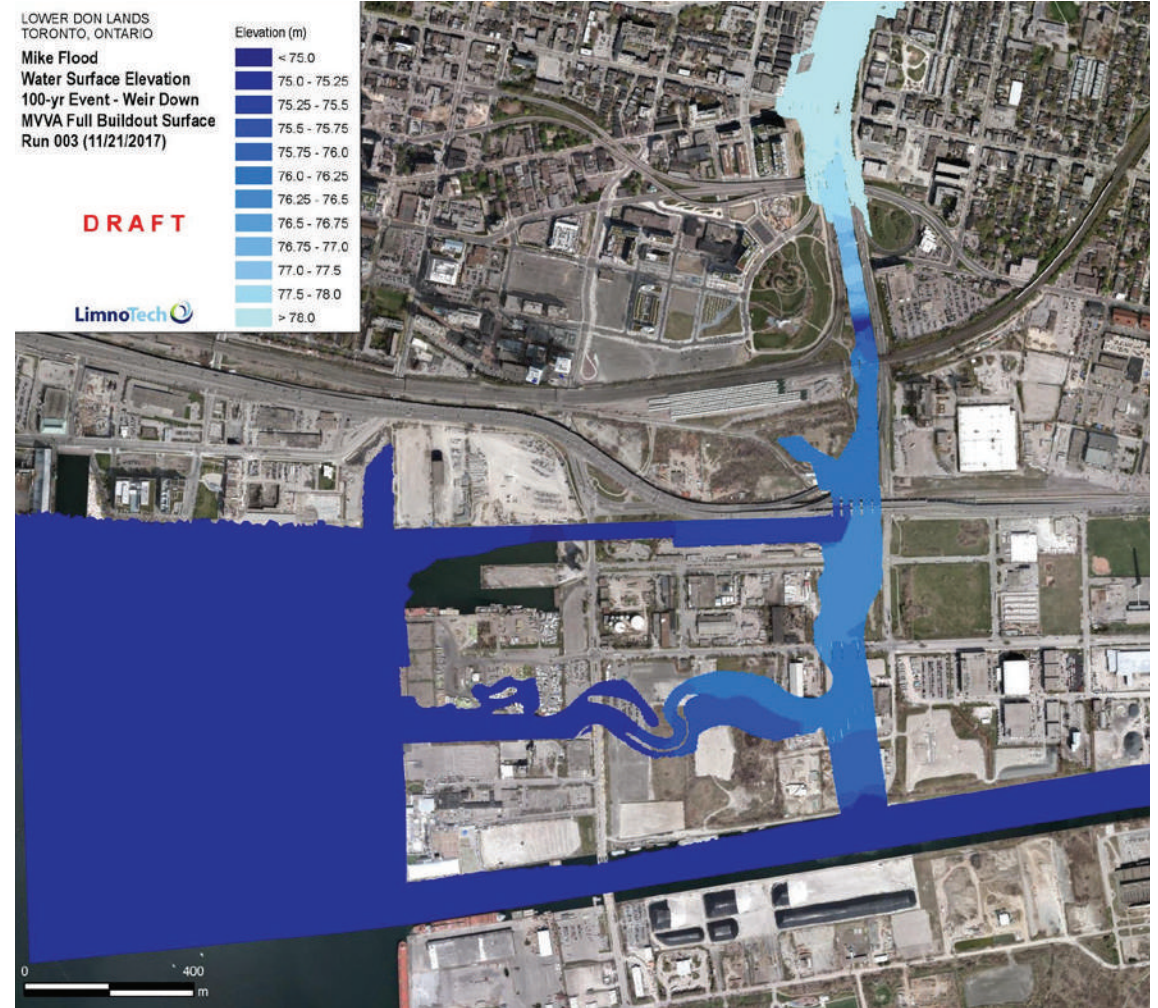
3. Composed with Spatial and Sectional Variety



4. Designed and Engineered with Nature



Sinuosity



Flood Event Modeling

5. Orchestrated as a Complete Ensemble



6. Grounded in WT Sustainability Principles



Climate Positive

- Support a C40 climate positive development
- Consider renewable energy generation
- Increase carbon sequestration strategies
- Reduce Heat Island Effect



Inclusive Resilience

- Protect 290 hectares of the city from flooding
- Develop inclusive programming to relieve the stresses of city living



Intelligent + Connected

- Explore opportunities for WIFI in Parks and Public Realm
- Connect to larger transportation systems
- Use innovative, sustainable materials and systems



Human

Experience-Driven

- Enhance physical, mental and social well-being for the Port Lands community
- Provide access to the Don River and Inner Harbour



Biophilic

- Improve and augment ecosystem health and rehabilitate fish and wildlife habitat

Refining The Park Program

Defining Landscape Types



City-wide Destination



Neighbourhood Park



Sports



Accessible Nature

Contextual Park Program Analysis - 2km / 20 Min. Walk

Neighbourhood Park

Sports

Accessible Nature

City-wide Destination



Neighbourhood Park Amenities - 2km / 20 Min. Walk

Amenity Types

- Fire Pit
- Covered Market
- Artificial Beach
- Bandstand
- Fieldhouse
- Community Garden
- Splash Pad
- Dog Parks
- Picnic Area
- Wading Pool
- Passive-Use Lawn
- Community Playground



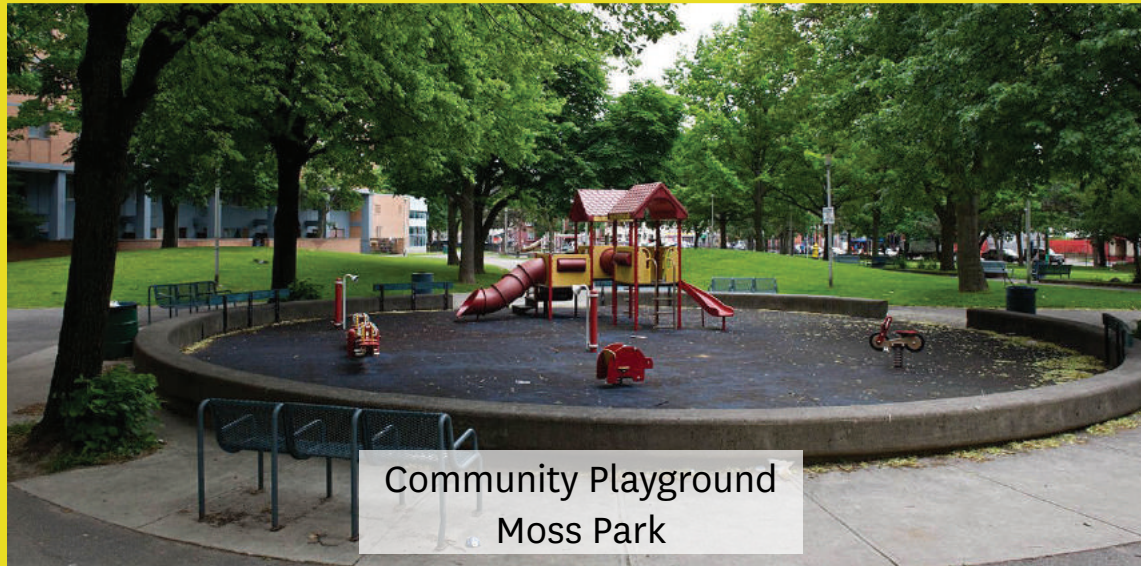
Neighbourhood Park Amenities - 2km / 20 Min. Walk



Bandstand
David Crombie Park



Artificial Beach
Sugar Beach



Community Playground
Moss Park



Splash Pad
Regent Park

Sports Facilities - 2km / 20 Min. Walk

Amenity Types

- Skateboarding
- Ball Hockey Pad
- Ice Rink
- Multi-Use Fields
- Cricket Pitch
- Tennis Court
- Baseball
- Basketball



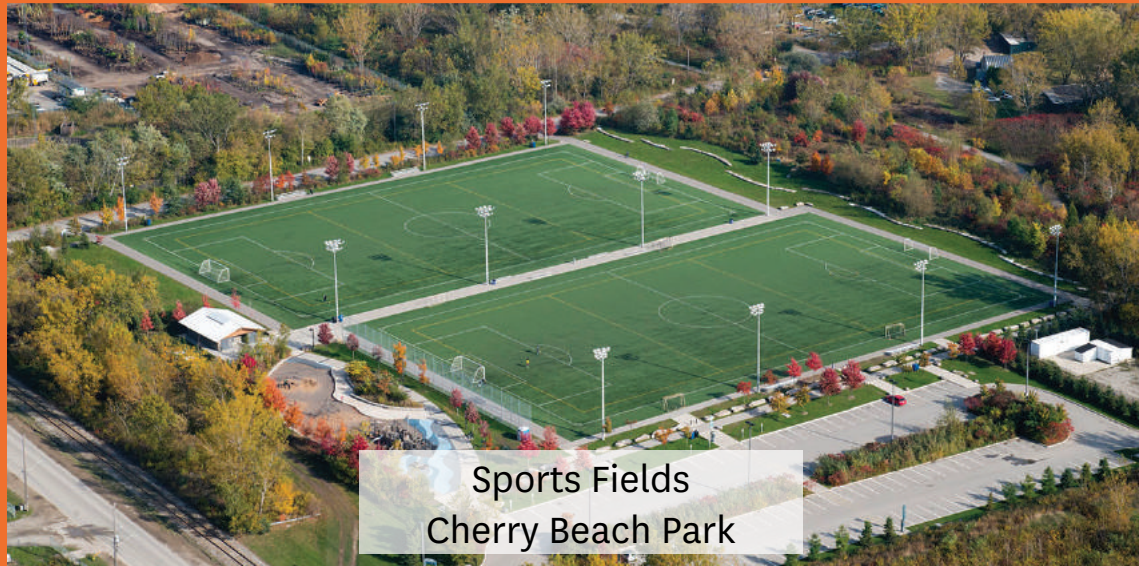
Sports Facilities - 2km / 20 Min. Walk



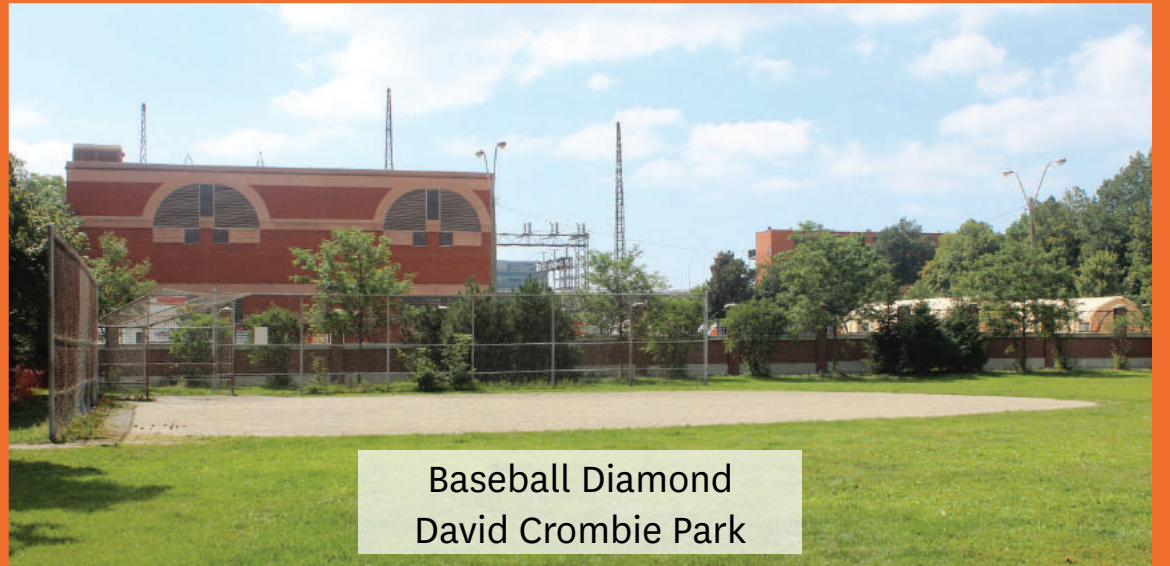
Ice Rink
Sherbourne Common



Skateboarding
Underpass Park



Sports Fields
Cherry Beach Park



Baseball Diamond
David Crombie Park

Accessible Nature - 2km / 20 Min. Walk

Amenity Types

- Boardwalk
- Marsh
- Hiking/Trails
- Kayak Launch
- Wooded Areas
- Natural Habitats
- Bike Trails



Accessible Nature - 2km / 20 Min. Walk



Boardwalk & Marsh
Corktown Common



Walking Trail
Cherry Beach



Beachfront Kayak Launch
Toronto Harbour



Bike/Walk Trail
Lower Don Recreation Trail

City-wide Destinations - 2km / 20 Min. Walk

Amenity Types

- Beach
- Event Space/ Plaza
- Community Centre
- Art/Sculpture



City-wide Destinations - Nearby Port Lands



Beach
Cherry Beach Park



Art/Sculpture
Toronto Underpass Park



Event Space/Plaza
Harbourfront Centre - Ontario Square



Amphitheatre
Music Garden

Proposed Distribution of Landscape Types

Legend

-  City-wide Destination
-  Neighbourhood Park
-  Sports
-  Accessible Nature



Are These Things That Your Waterfront Needs More Of?



Event Lawn



City-wide Playscape



Outdoor Cafes



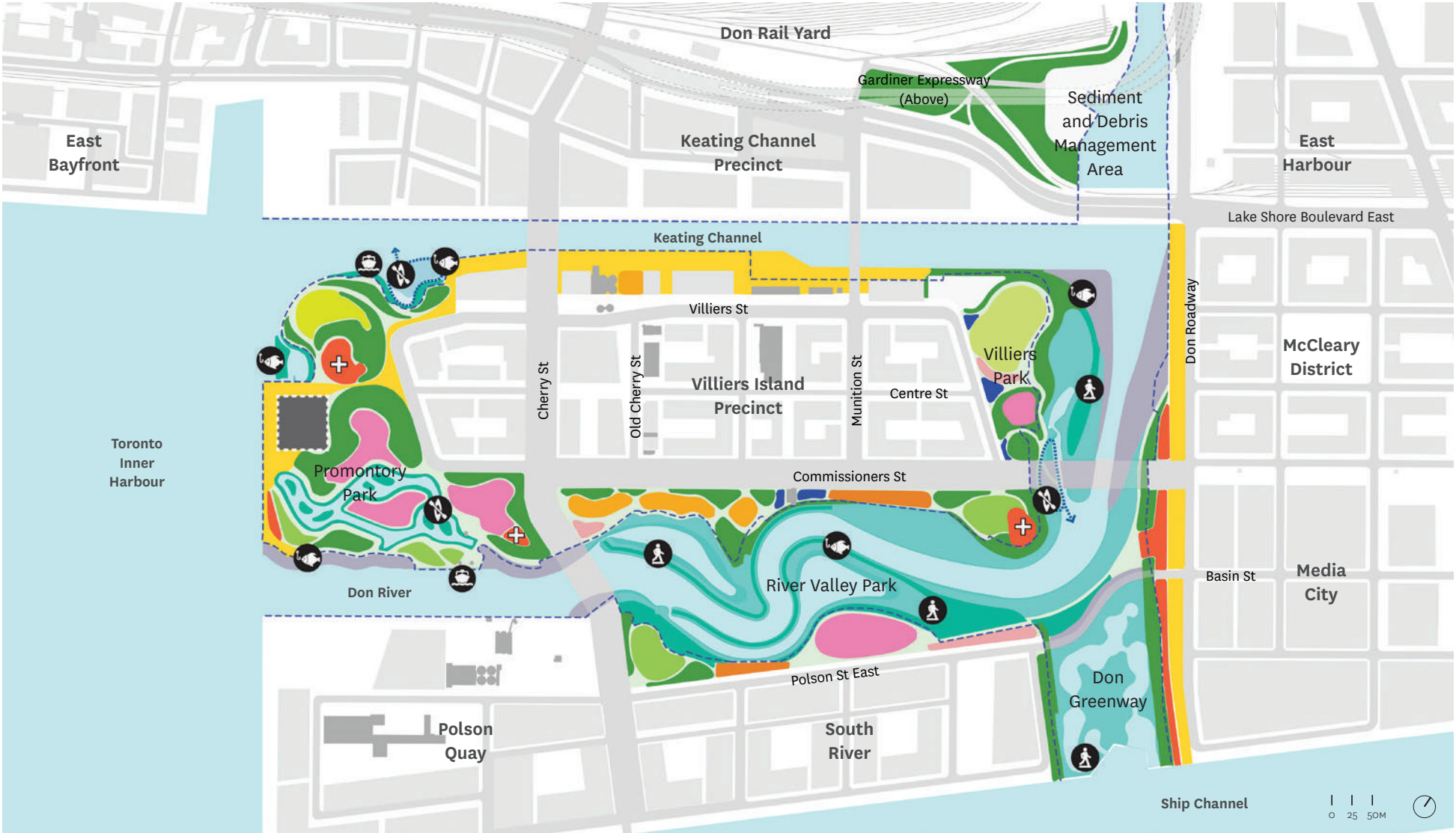
Picnicking

Are These Things That Your Waterfront Needs More Of?



Landscape Program - Proposed Design

- Flexible Program
 - Playscape
 - Court Sports
 - Dog Park
 - Overlook
 - Picnic Terrace
 - Urban Promenade
 - Plaza
 - Event Lawn
 - Passive Use Lawn
 - Multi-Use Field
 - Rocky Harbour Edge
 - Riverine Wetland
 - Levee Wetland
 - Wooded Upland
-
- Fishing Node
 - Water Taxi Landing
 - Nature Exploration
 - Water Access



Rocky Harbour Edge



River Channel



Riverine Wetland



Levee Wetland



Water Access



Nature Exploration



Nature Exploration



Nature Exploration



Wooded Upland



Wooded Upland



Event Lawn



Event Lawn



Passive Use Lawn



Overlook



Overlook



Overlook



Picnic Terrace



Urban Promenade



Urban Promenade



Urban Promenade



~WINE~
PINOT NOIR
CABERNEY
MELBEC
RED LAMARUSCO
SPARKLING + Semi Rosé
SPARKLING WHITE
PINOT GRIGIO
RIESLING
SAUVIGNON BLANC
CHARDONNAY

Urban Promenade



Public Art



Plaza



Plaza



City-wide Playscape



City-wide Playscape



Neighbourhood Playscape



Neighbourhood Playscape



Nature Play



Nature Play



Dog Park



Heritage Adaptive Re-use



Industrial Landmark



Multi-Use Field



Court Sports



Court Sports



Active Recreation



Active Recreation



Proposed Design









