

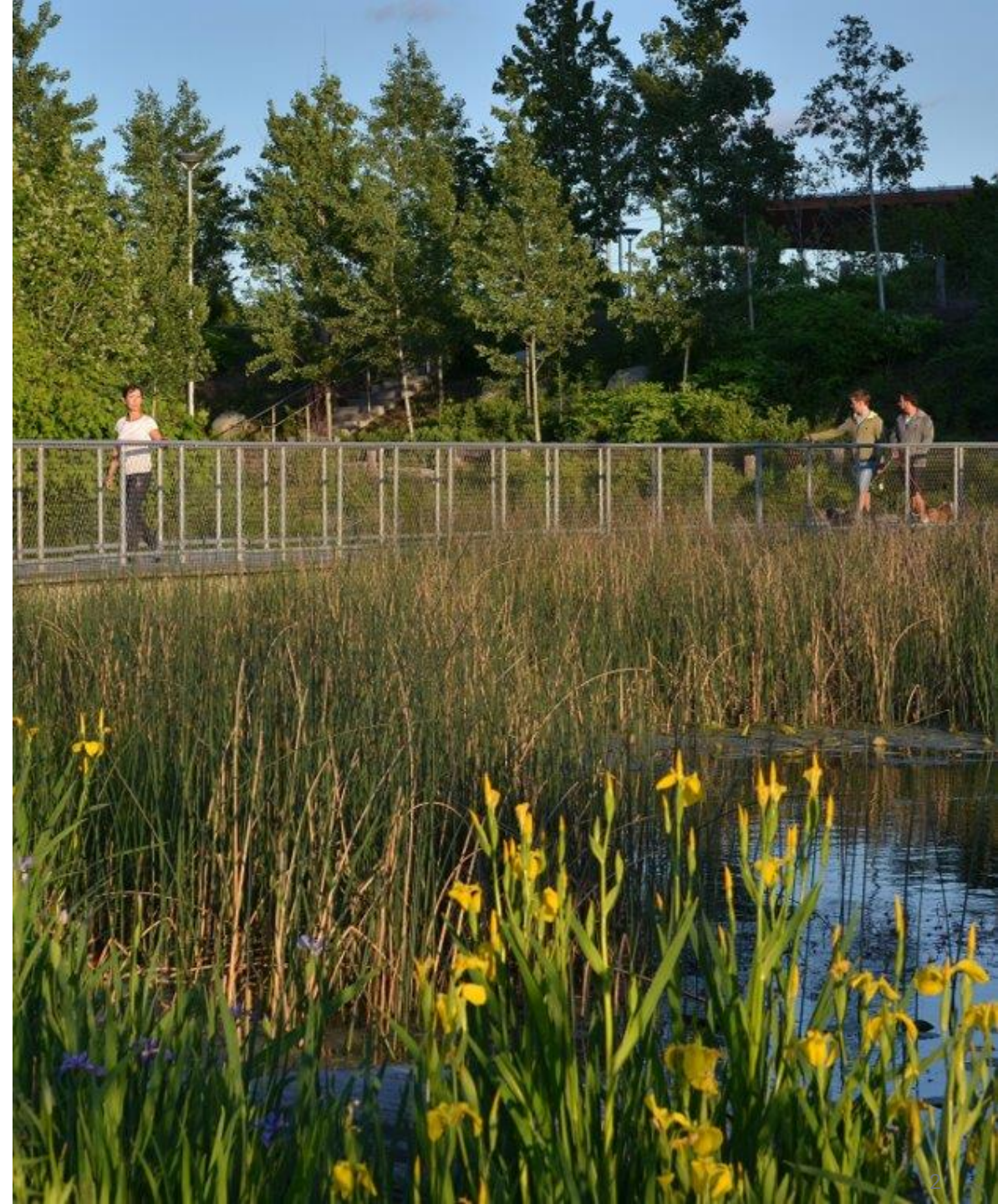
November 20, 2023

Quayside Infrastructure & Public Realm Public Meeting

Land Acknowledgement

Waterfront Toronto acknowledges that the land upon which we are undertaking our revitalization efforts is part of the traditional territory of the Mississaugas of the Credit First Nation and that Toronto is covered by Treaty 13 with the Mississaugas of the Credit First Nation (MCFN).

In addition, Waterfront Toronto acknowledges that Toronto has historically been a gathering place for many Indigenous people, including the Mississaugas of the Credit, the Anishnaabe, the Chippewa, the Haudenosaunee and the Wendat peoples, and is home to many First Nations, Inuit and Métis peoples today.



Opening

Shelley Charles, Ojibwe Elder

MinoKamik Collective

Welcome

Ausma Malik, Deputy Mayor, City of Toronto

Member of Board of Directors, Waterfront Toronto

Agenda: Quayside Infrastructure and Public Realm

Time	Item	Presenter
6:00 pm	1. Welcome & Land Acknowledgement	<ul style="list-style-type: none"> • Pina Mallozzi, Senior Vice President Design, Waterfront Toronto • Shelley Charles, Ojibwe Elder, MinoKamik • Ausma Malik, Deputy Mayor, City of Toronto • Liz McHardy, Partner, LURA
6:10 pm	2. Quayside in Context	<ul style="list-style-type: none"> • Pina Mallozzi, Waterfront Toronto
6:20 pm	3. Leading with Ecology – Presentation <ul style="list-style-type: none"> • Discussion 	<ul style="list-style-type: none"> • Yvonne Lam, Partner, DTAH • Liz McHardy, LURA
6:55 pm	4. Mobility and Movement – Presentation <ul style="list-style-type: none"> • Discussion 	<ul style="list-style-type: none"> • Yvonne Lam, DTAH • Liz McHardy, LURA
7:25 pm	5. Activation and Amenities – Presentation <ul style="list-style-type: none"> • Discussion 	<ul style="list-style-type: none"> • Yvonne Lam, DTAH • Liz McHardy, LURA
7:55 pm	6. Wrap-up and Next Steps	<ul style="list-style-type: none"> • Liz McHardy, LURA

Context

Pina Mallozzi, Senior Vice President, Design
Waterfront Toronto

Designated Waterfront Area





East Bayfront – Before (circa 2005)



East Bayfront – Now (2021)



Limberlost Place

Waterfront Innovation Centre

Corus Quay

George Brown College

Sherbourne Common

Monde
Aqualina

Affordable Housing/
Purpose Built Rental

Aqualuna & Community Centre

Quayside

Aquavista

T3 Bayside

Aitken Place Park

Aquabella & Childcare Centre

Water's Edge Promenade
Future Boardwalk



Parks



Commercial & Institutional Uses



Affordable Housing Units



Community Use



Public Realm



Residential



Future Developments



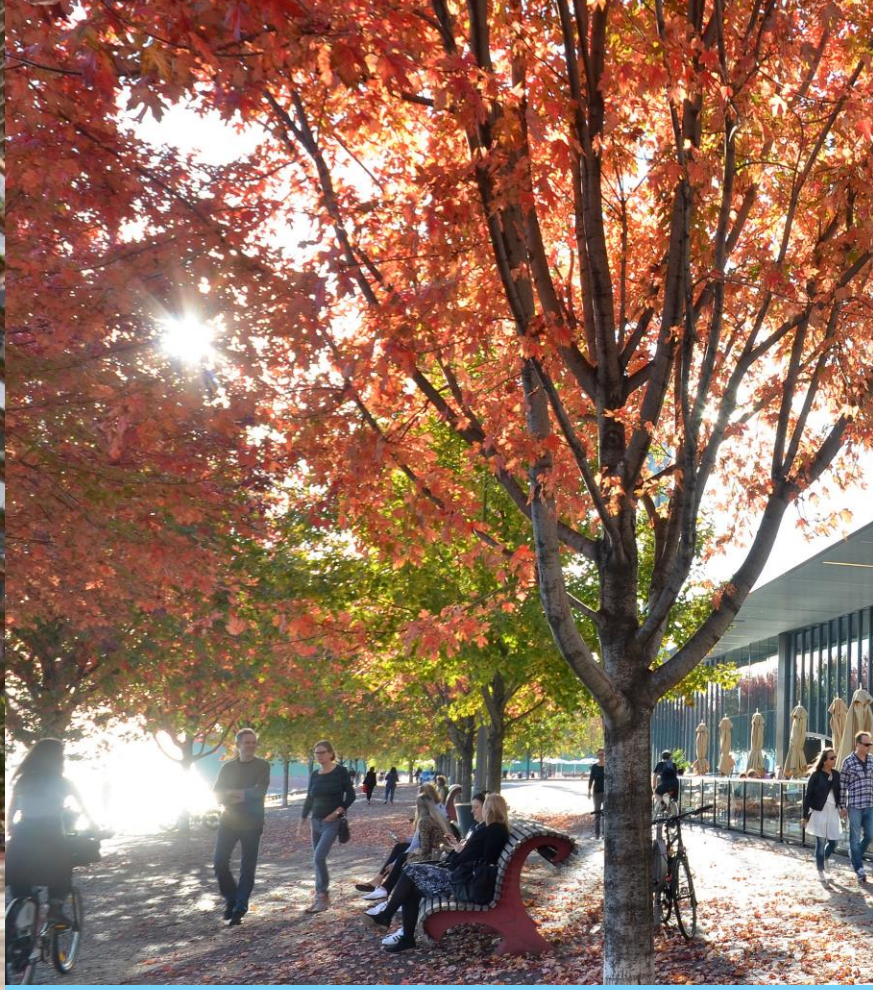
Quayside (future mixed use)





Development Parcels *Blocks 1-5*

*Delivered by Quayside Impact Limited
Partnership*



Streets and Public Realm *Queens Quay East, local streets, Water's Edge Promenade, Silo Park*

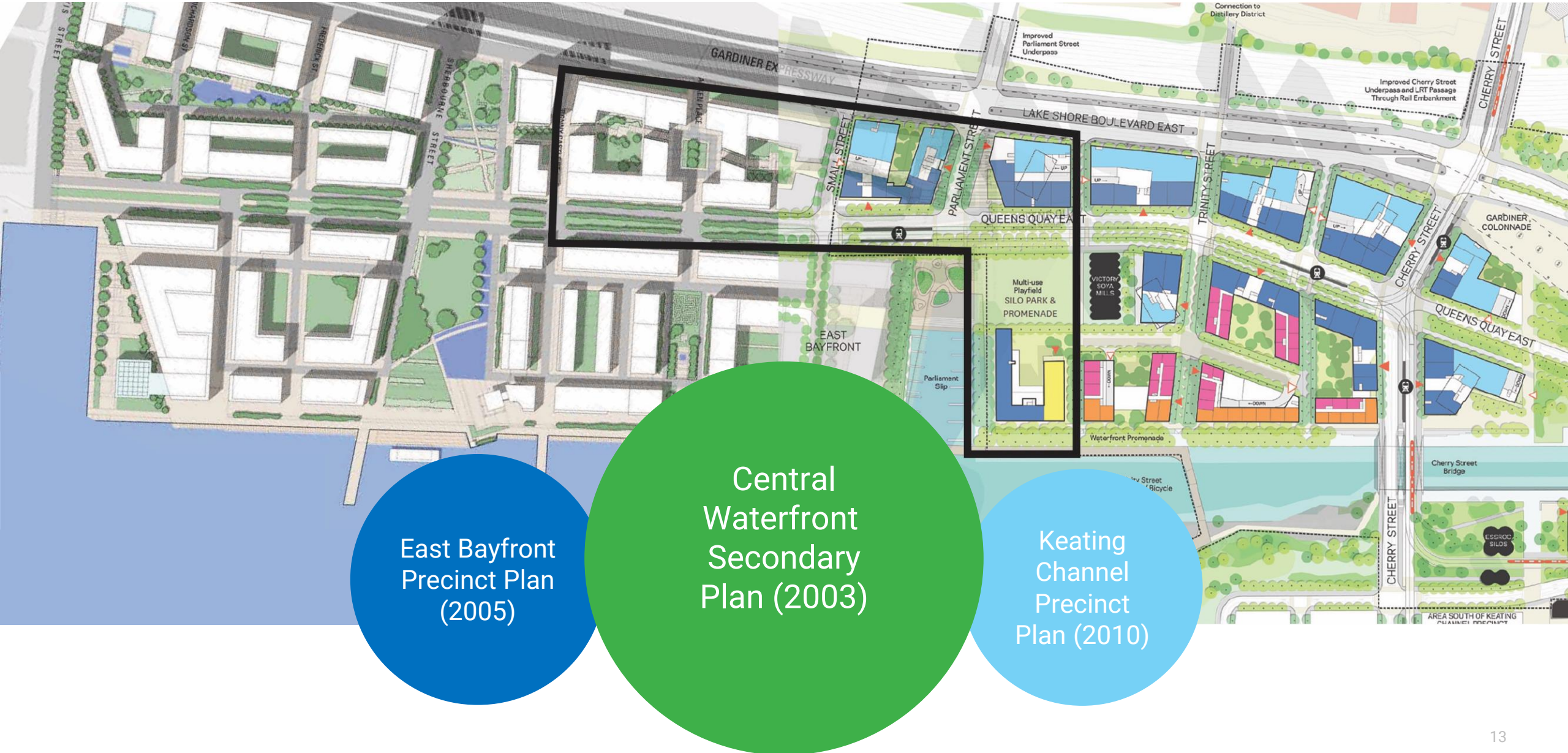
Delivered by Waterfront Toronto



Infrastructure *Municipal and utility infrastructure to support future density*

Delivered by Waterfront Toronto

Planning Context: Guiding Documents



Dynamic

Year-round streetscape activation, active transportation, public transit

Public Realm Design Principles

Activation and Engagement: embrace seasonality and encourage year-round use of public spaces.

Continuity with the broader waterfront: consistent with the vision and design of the public realm elsewhere in the waterfront, and draw people to the lake.

Design Excellence: maintain the standard of design excellence, quality of place, and attention to detail that has been delivered on the waterfront.



Inclusive

Affordable housing, social equity, public spaces & placemaking

Public Realm Design Principles

Equity: celebrate the cultural diversity of Toronto and equitably welcome all users to these spaces.

Indigenous Placemaking: respect and celebrate Indigenous place-making and the Indigenous relationship to this land.

Accessibility: beyond compliance with accessibility standards, the waterfront should be inviting and barrier free for users of all abilities and ages.





Resilient

Climate leadership, healthy spaces

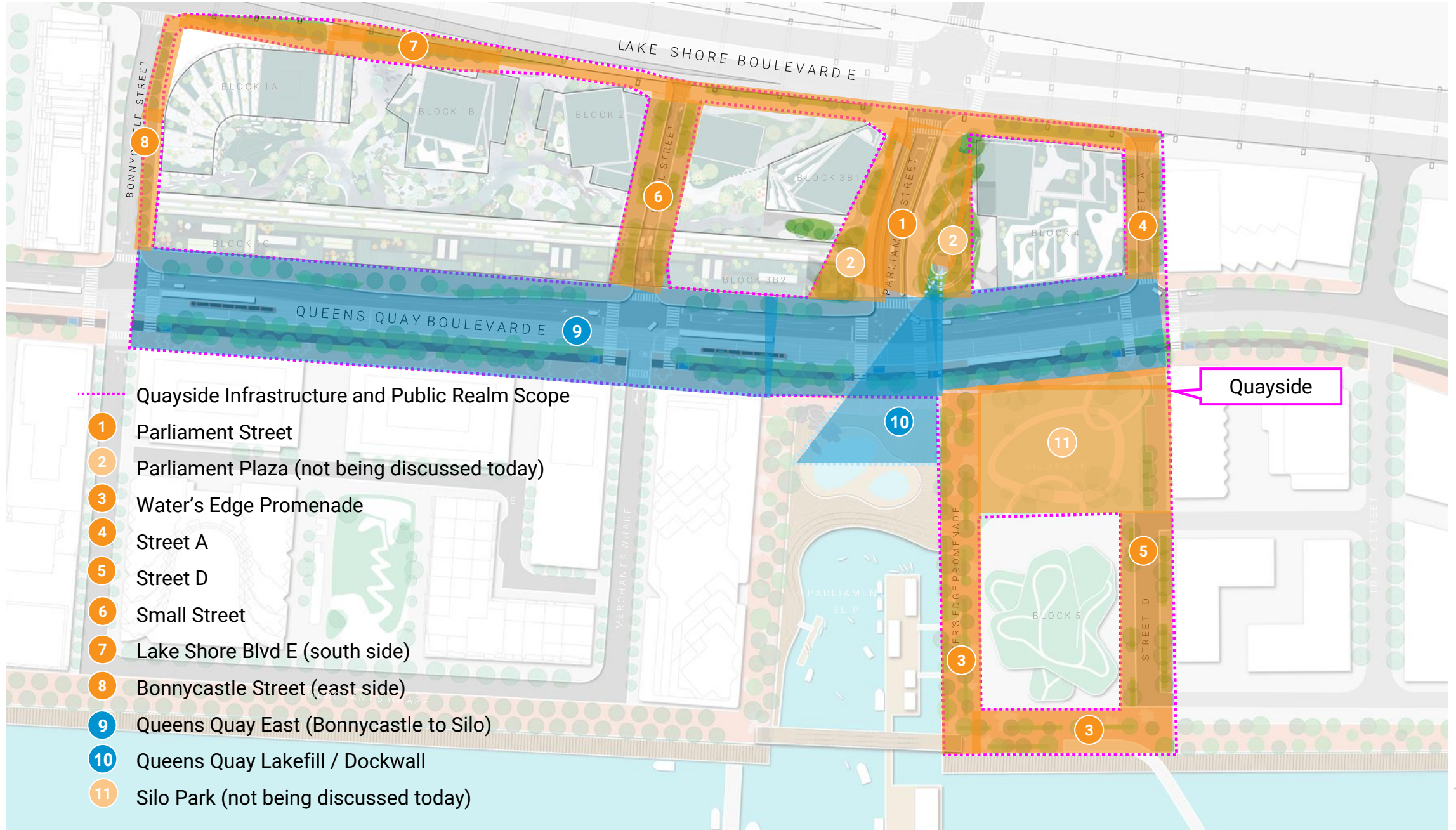
Public Realm Design Principles

New Standards for Sustainability and Resilience: green spaces that encourage new innovations, show green infrastructure at work, and improve ecological performance.

Health and Well-being: foster connections between people and nature by maximizing access to greenspace delivered in an integrated way with development.

Indigenous Placemaking: respect and celebrate Indigenous place-making and the Indigenous relationship to this land.

Scope – Project Components



What to Expect at Quayside...



Design	Lakefill Construction	Infrastructure/ Internal Streets Construction	Parliament Street / Queens Quay Construction	Water's Edge Promenade Construction	Silo Park Design
Ongoing - September 2024	January 2024	Late 2024	Early 2025	Early 2025	Mid-2020s
TODAY: Public Realm Public Meeting		Creation of Construction Liaison Committee			

*these dates are preliminary and will be confirmed as design advances

The Feedback We're Looking For

Does the approach to planting meet our goals? Is there anything missing?

Does this feel like a space that you can easily get around by transit, bike or on foot? Is there anything else we should consider?

Do the suggestions for activation seem appropriate? Are there other amenities we should consider in the designs?



Quayside Infrastructure & Public Realm

Yvonne Lam, Partner
DTAH

Leading with Ecology



Parks and Public Realm Concept:
A Continuous Green Edge

Public Realm Character Aspirations

Water's Edge Promenade



Bayside, Toronto

Local Streets



Bayside, Toronto

Major Streets



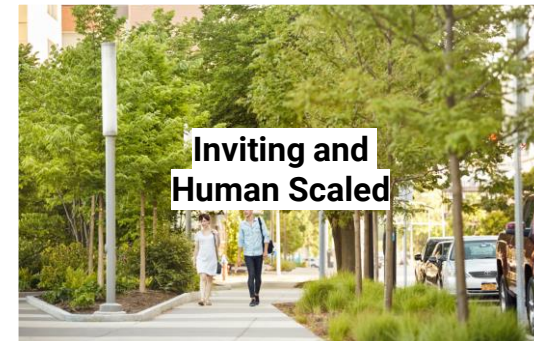
Lake Shore Boulevard Pilot, Toronto



ANU Cambri, Acton, Australia



Jaktgatan and Lövängsgatan, Stockholm



Buffalo Niagara Medical Campus Streetscape



Quartier des Inventeurs, Mantes la Jolie, France



Queens Quay Boulevard, Toronto

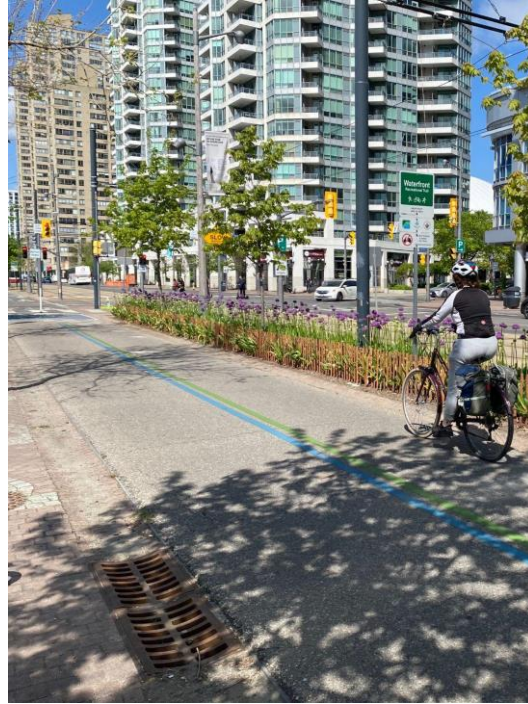


Penn Street, Philadelphia

Applying Green Infrastructure Lessons Learned



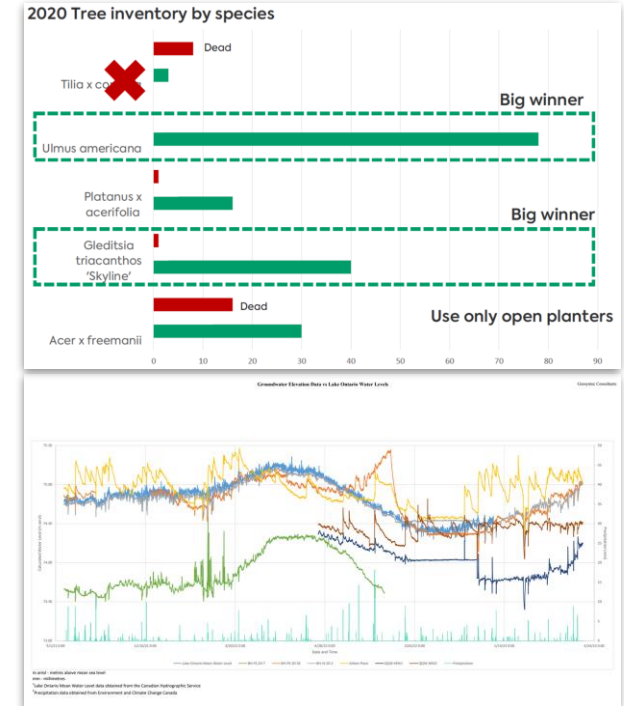
Green Streets Tour with City Staff
August 2023 → Adjustments to maintenance, planting plans & detailing



Queens Quay West Optimizations Pilot → Adjustments to planting plans and confirmation of intersection improvements



Edge Detail Precedent Research → Adjustments to edge detail



Tree Health & Shallow Groundwater Monitoring
confirmed groundwater level fluctuates according to lake level → raised tree planters on QQE for resiliency

Integrate Indigenous Approaches to Design

Integrated design process with MinoKamik Collective:

- Planting species and material selection
- Creating places for people of all ages
- Prioritizing restoration, healing, and connecting with the urban forest
- Using the savanna as inspiration for landscape structure and resilience
- Connecting urban populations to their natural landscapes
- Natural habitats for indigenous plants and urban forest groves
- Community spaces for social gatherings (i.e., firepits, picnic tables, etc.)
- Arts, language, and cultural heritage (i.e., signage, landscape elements, programming, etc.)

Choosing Hardy Species & Implementing Lessons Learned

Lake Shore Boulevard E (south side)



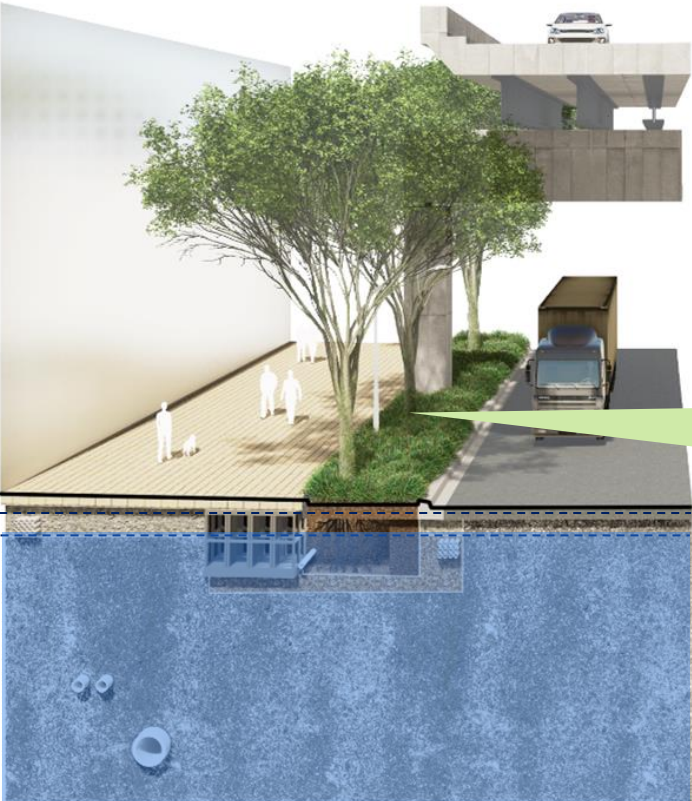
Plant understory denser and use **fast-establishing, street-resilient species** with vigour and ability to create their own populations as part of planting systems.

Review findings from TRCA monitoring and consider alternative paving surface



TRCA 100-Year
Lake Level
(+76.20)

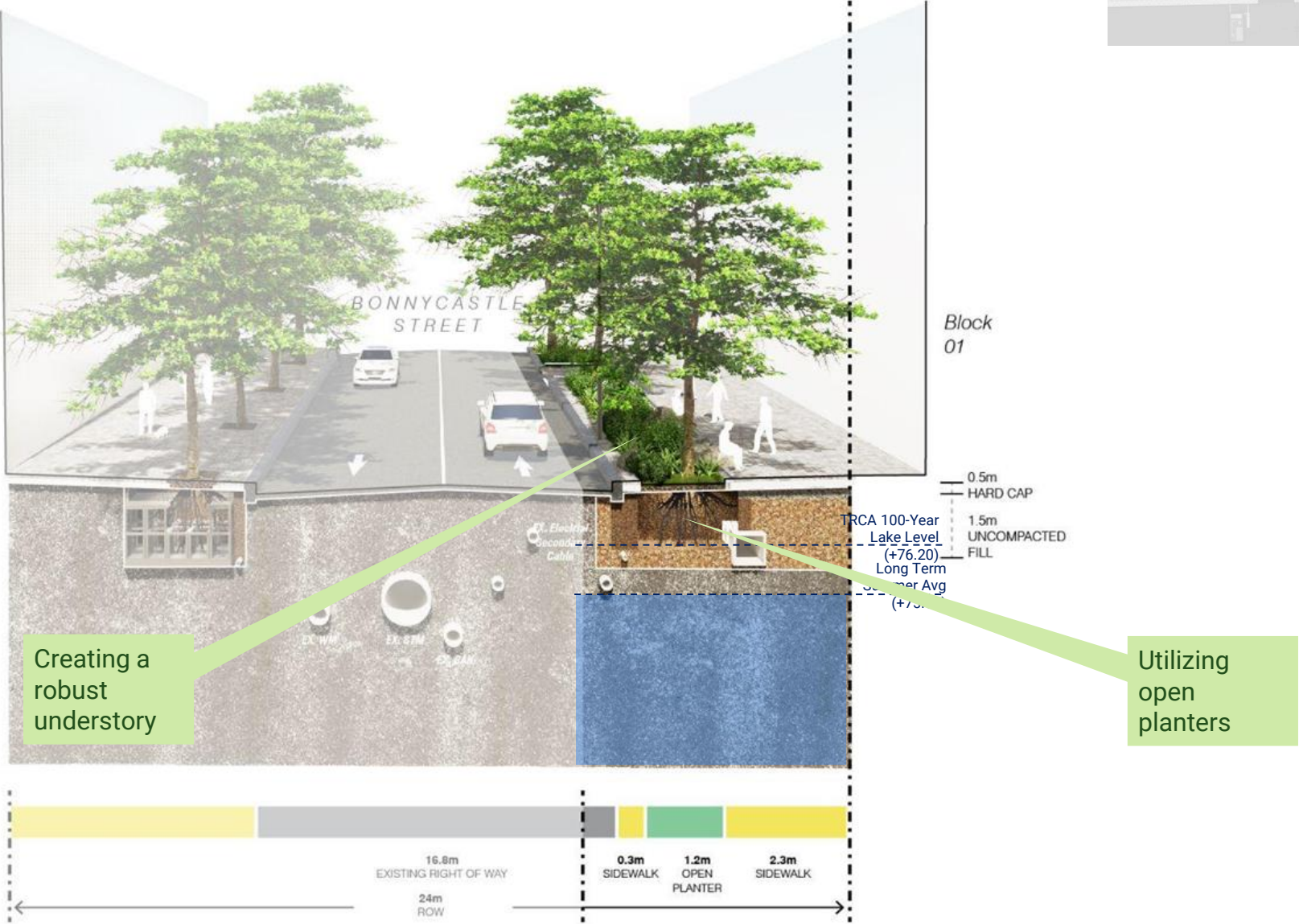
Long Term
Summer Avg
(+75.04)



Implement findings from TRCA pilot monitoring

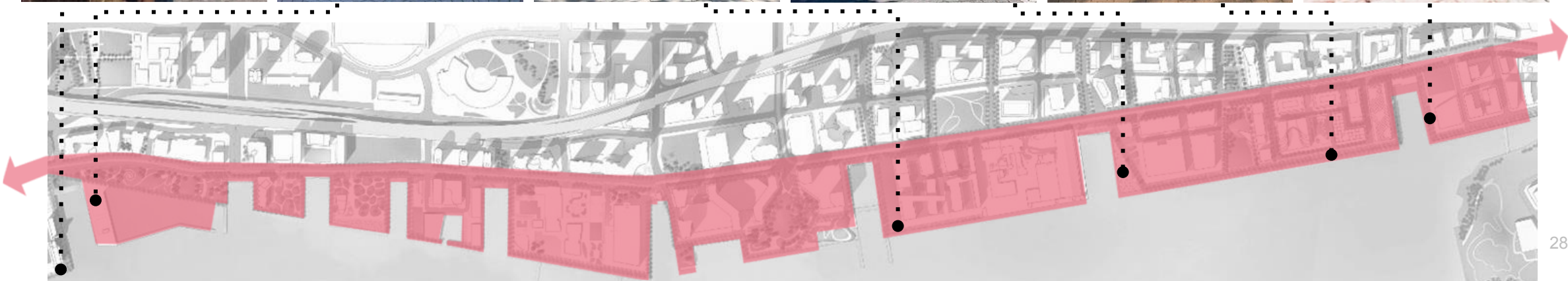
Creating Additional Space for Plantings

Bonnycastle Street (east side)



Embracing Nature

Water's Edge Promenade Quayside



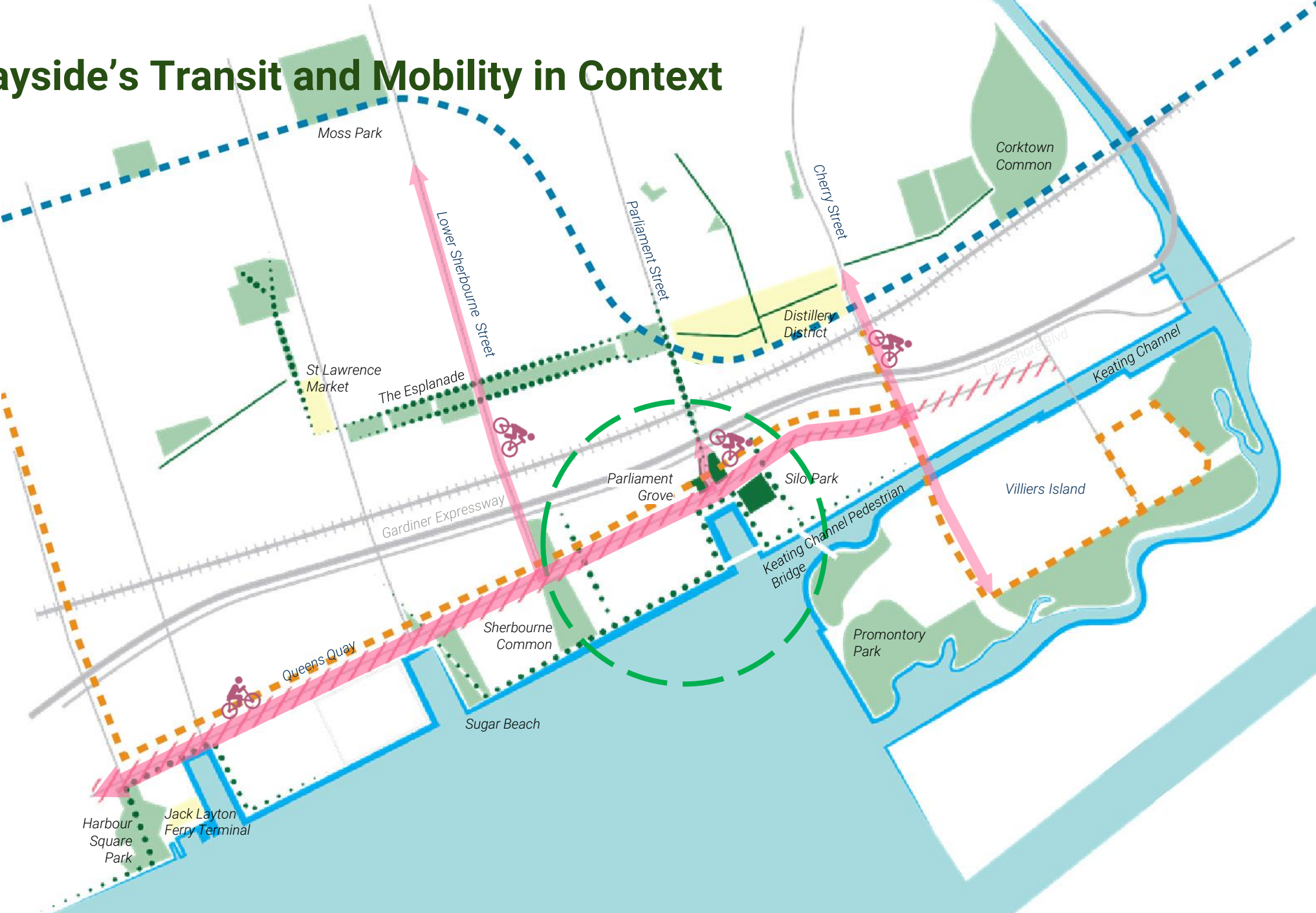
Poll Questions

- How important are resilient planting systems and vegetation in the public realm?
- To what extent do you agree this concept of a continuous green edge will create an immersive and welcoming space?

Questions and Comments

Mobility and Movement

Quayside's Transit and Mobility in Context

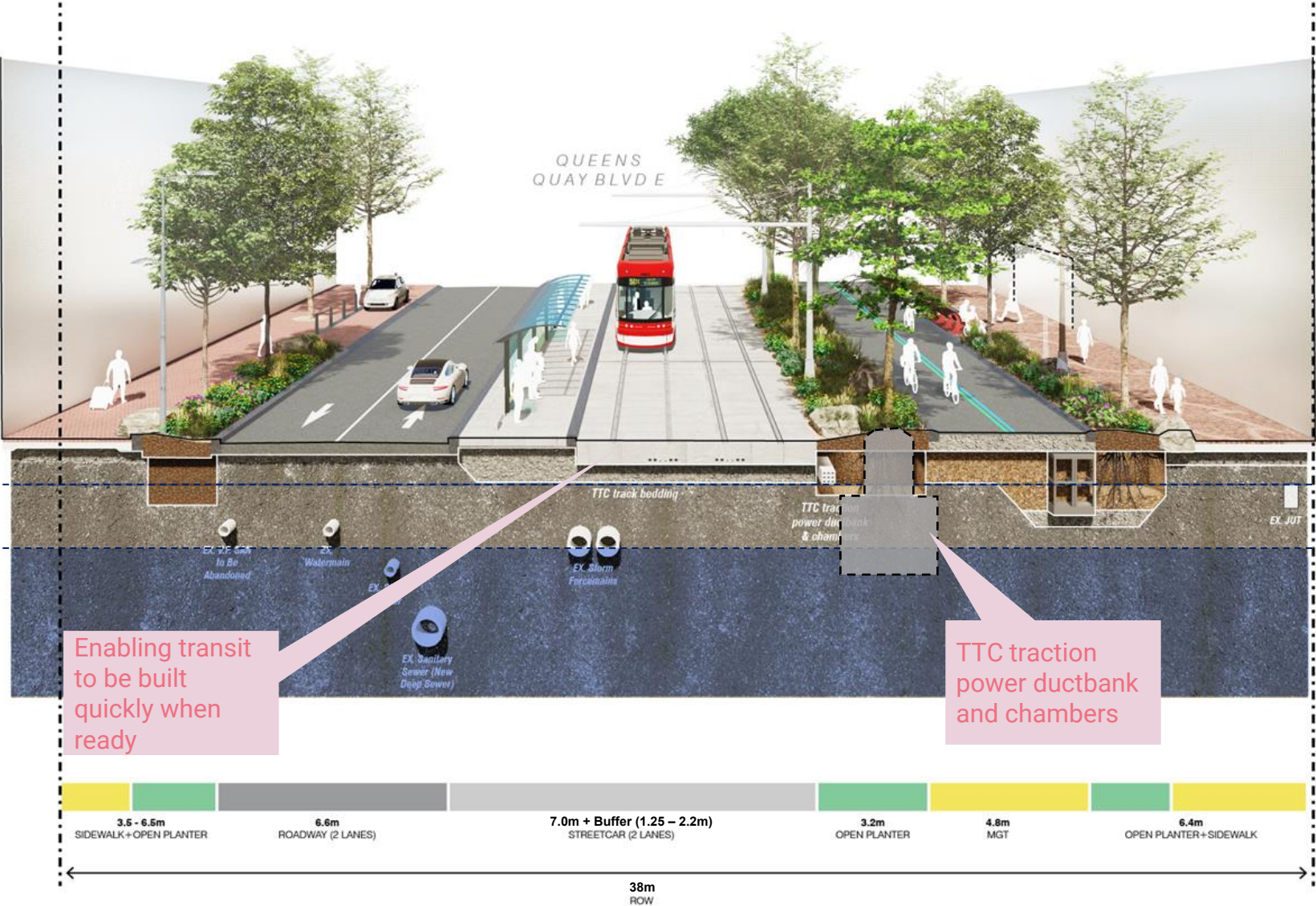


LEGEND

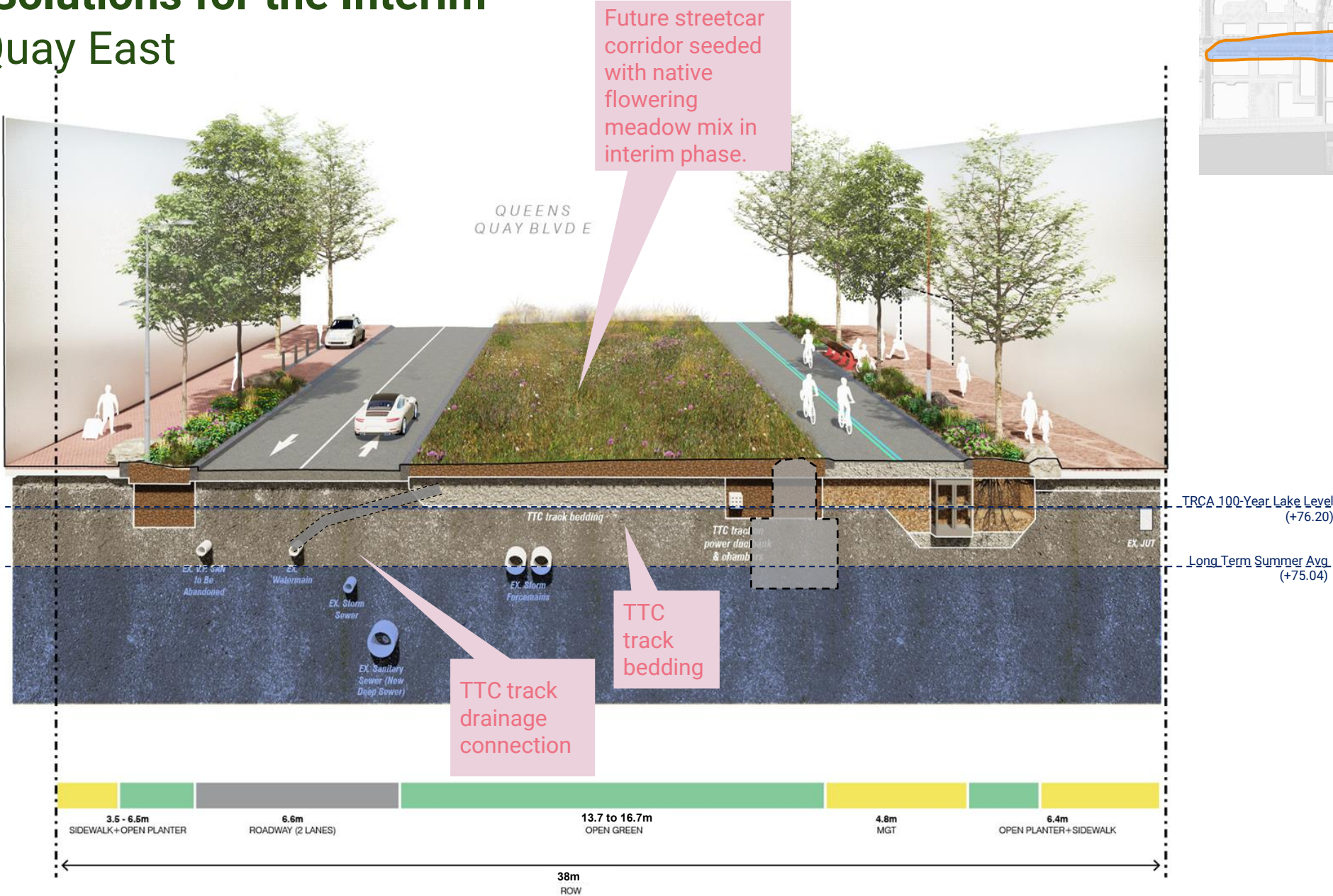
- Bike Lanes or Trails
- Martin Goodman Trail
- Waterfront East LRT (Future)
- Ontario Line (Future)
- Green Spaces
- Attractions

Preparing for the Waterfront East LRT

Queens Quay East



Offering Solutions for the Interim Queens Quay East

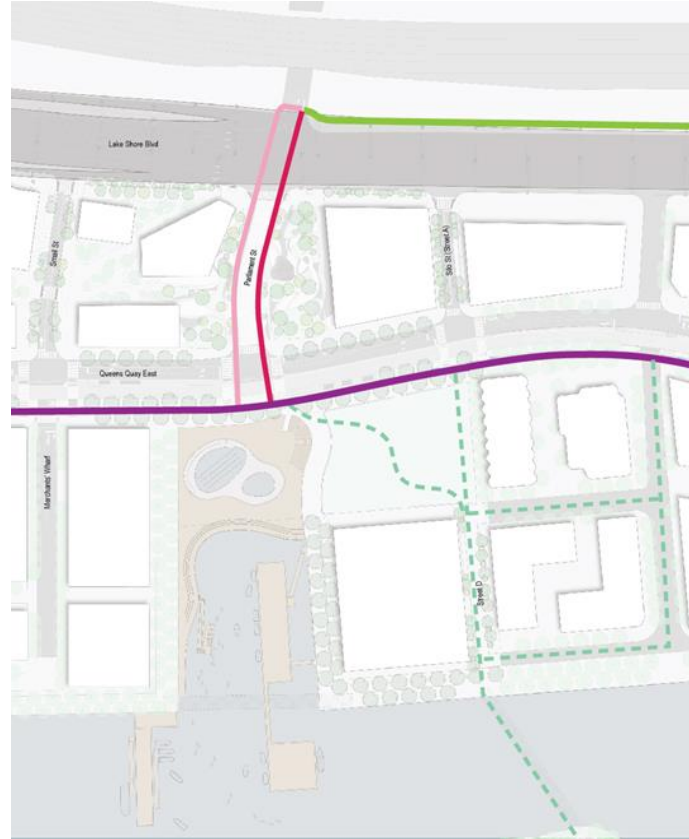


Creating Bike Lanes & Setting the Stage for Expansion

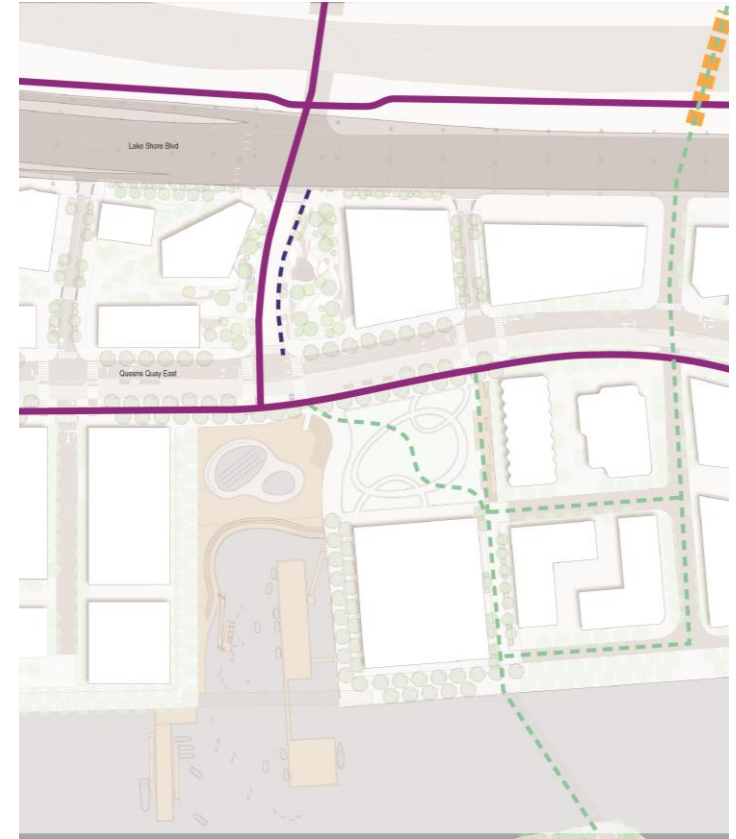
Parliament Street



Day One



QQE Extension to Cherry St



Lake Shore Public Realm and Parliament North

LEGEND

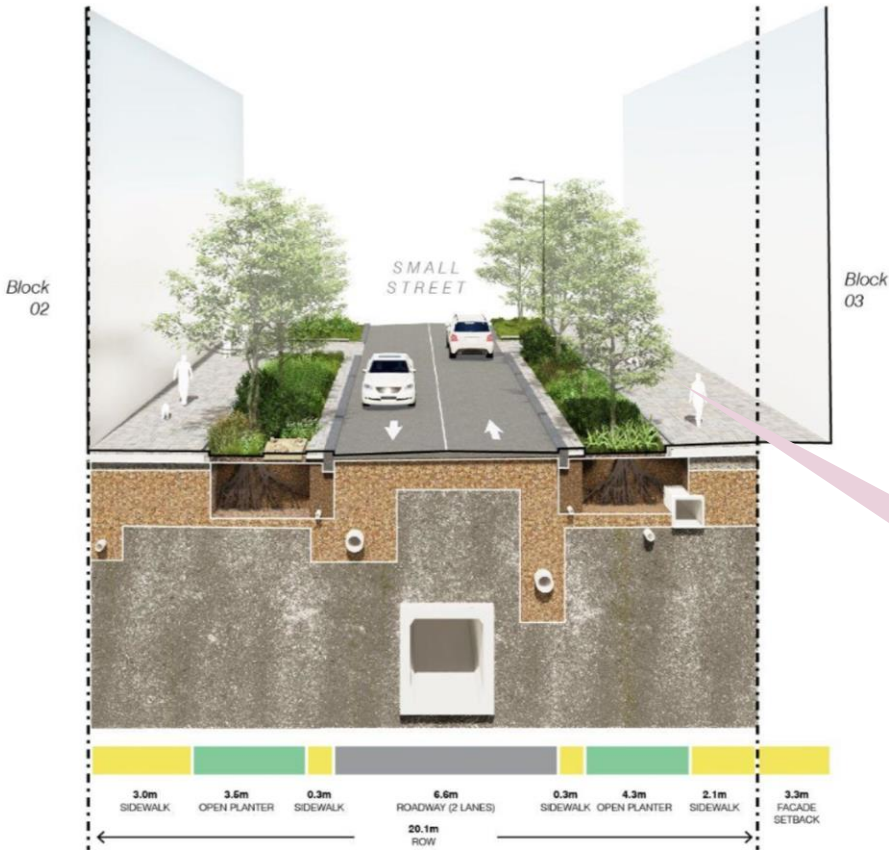
- | | | | |
|--|---------------------------------------|--|--------------------------------|
| | EXISTING - BIDIRECTIONAL | | INFORMAL CONNECTION |
| | PROPOSED - UNIDIRECTIONAL NORTH BOUND | | EXPANDED PUBLIC REALM |
| | PROPOSED - UNIDIRECTIONAL SOUTH BOUND | | INTERIM CONNECTION(WEST BOUND) |
| | PROPOSED - BIDIRECTIONAL | | INTERIM CONNECTION(EAST BOUND) |

Ensuring Pedestrian Safety & Comfort

Lake Shore Boulevard East at Parliament Street, & Small Street



Wide and well marked pedestrian crossings under the Gardiner



Ample sidewalks

Poll Questions

- How do you envision moving throughout Quayside?
- What factors contribute to your sense of safety and comfort when walking? Select all that apply.

Questions and Comments

Activation and Amenities

Finding Inspiration in Nature

Ecological Art, bird houses, moveable furniture...



Integrated geologic and biological processes with potential for artistic interpretation



Dead wood
Biodiversity hotbed Mycellium feeder



Woody shrubs and hedges
With berries and hiding places for songbirds



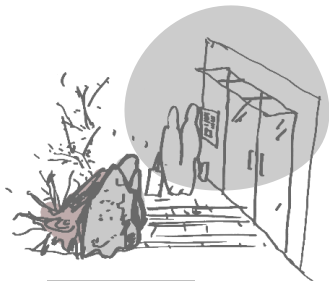
Rehomed orphaned "erratics"
Informal seating and play elements

Local Natural Elements Tell the Story of Quayside



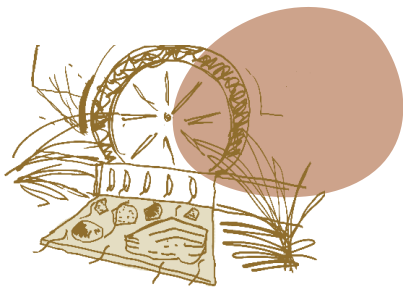
Socialites

Encourage social interaction and provide informal seating.



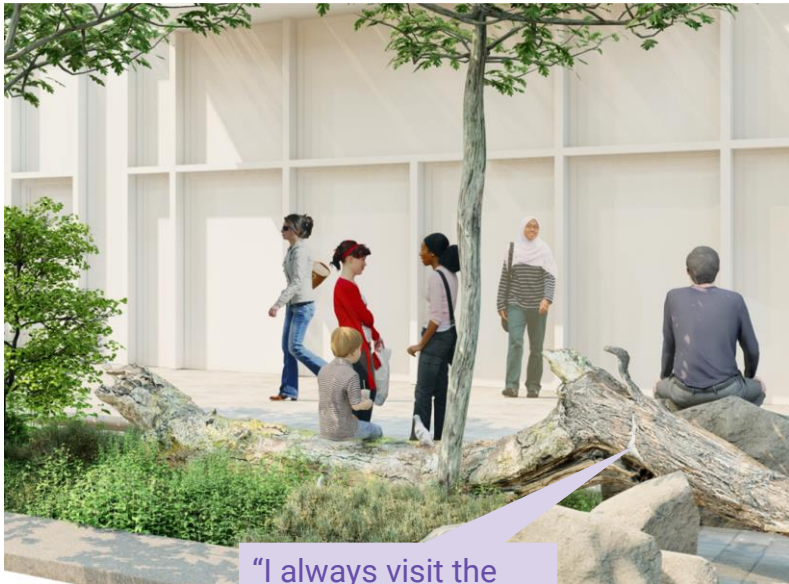
Markers

Wayfinding devices that celebrate moments of arrival and transition.



Teachers

Thoughtfully detailed elements that draw attention to hidden processes like water cycles and soil health in the streetscape.



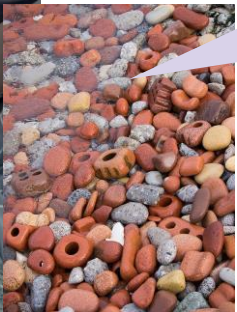
"I always visit the big mossy log with my grandpa to look for bugs"



"The surface of the stone is smooth from years of visitors resting and navigating by touch"

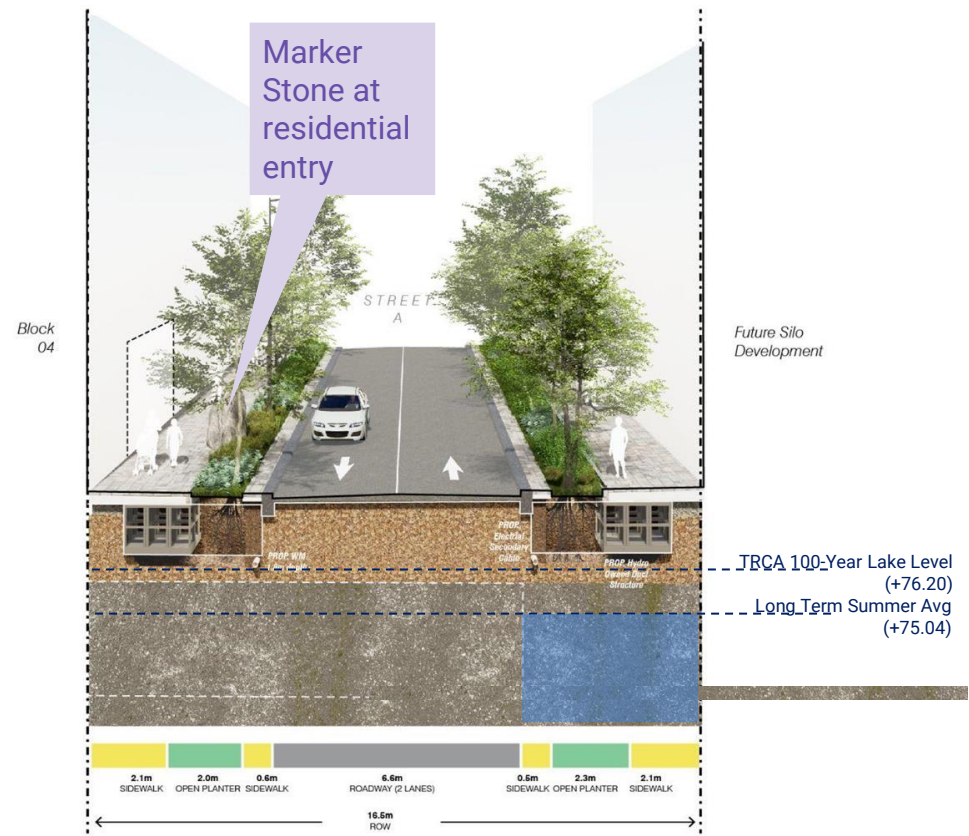


Use of recycled and found material tell the geologic story of the Toronto waterfront



Incorporating “Marker Stones”

Street “A” local street



Incorporating “Storytelling Stones” & Amenities

Water’s Edge Promenade Quayside



Rest areas with
companion seating

“Socialite Stones”

Seating Pockets with Formal and Informal Furnishings

Queens Quay East



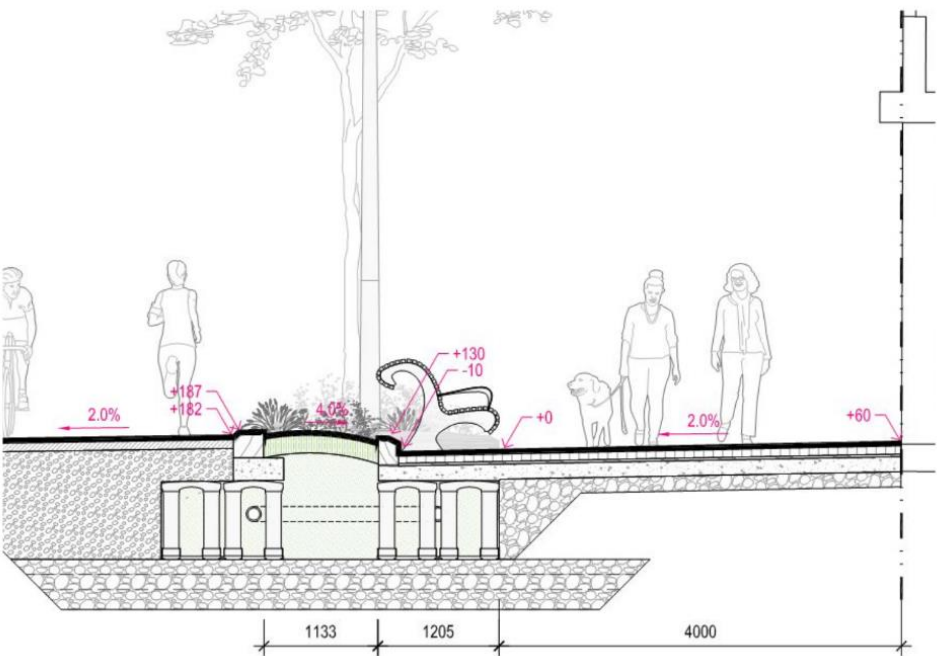
Areas for rest, including companion seating



Queens Quay West



Queens Quay East



Poll Question

What special elements and features would be interesting to see on the local streets and Water's Edge Promenade?

Select all that apply.

Questions and Comments

What to Expect at Quayside...



Design	Lakefill Construction	Infrastructure/ Internal Streets Construction	Parliament Street / Queens Quay Construction	Water's Edge Promenade Construction	Silo Park Design
Ongoing - September 2024	January 2024	Late 2024	Early 2025	Early 2025	Mid-2020s
TODAY: Public Realm Public Meeting		Creation of Construction Liaison Committee			

*these dates are preliminary and will be confirmed as design advances

Thank You!



a waterfront for everyone