

October 2023

Construction Notice #42: Port Lands Flood Protection & Lake Shore Boulevard East Projects



Construction Manager



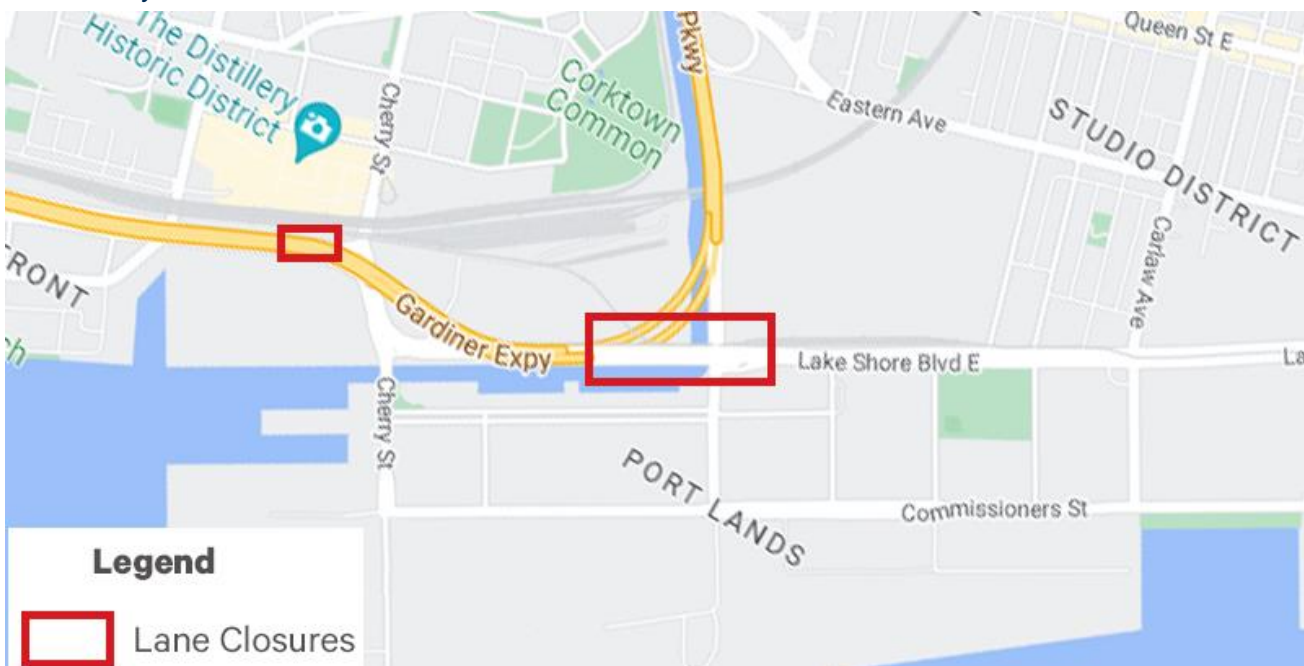
Past construction notices, as well as information about all ongoing construction can be found on the [construction page on the project website \(https://portlandsto.ca/construction/\)](https://portlandsto.ca/construction/).

Traffic Notice

Lane Closures on Lake Shore Boulevard East and Don Roadway/Don Valley Parkway Ramp: October 16-23, 2023

To relocate natural gas infrastructure along Lake Shore Boulevard East, Enbridge Gas is closing one eastbound lane on Lake Shore Boulevard East between Cherry Street and Don Roadway. There will be intermittent closures of one westbound lane west of Cherry Street. Don Roadway will be reduced to one lane in each direction to and from the Don Valley Parkway (DVP). A single lane will remain open in all directions.

Additional lane closure details; from Thursday, October 19 at 6:00 a.m. until Sunday, October 22 at 6:00 p.m. Lake Shore Boulevard East will be reduced to one shared lane for both eastbound and westbound traffic. Two-way traffic will be maintained and controlled by flag persons and Paid Duty Officers. Please expect traffic delays.



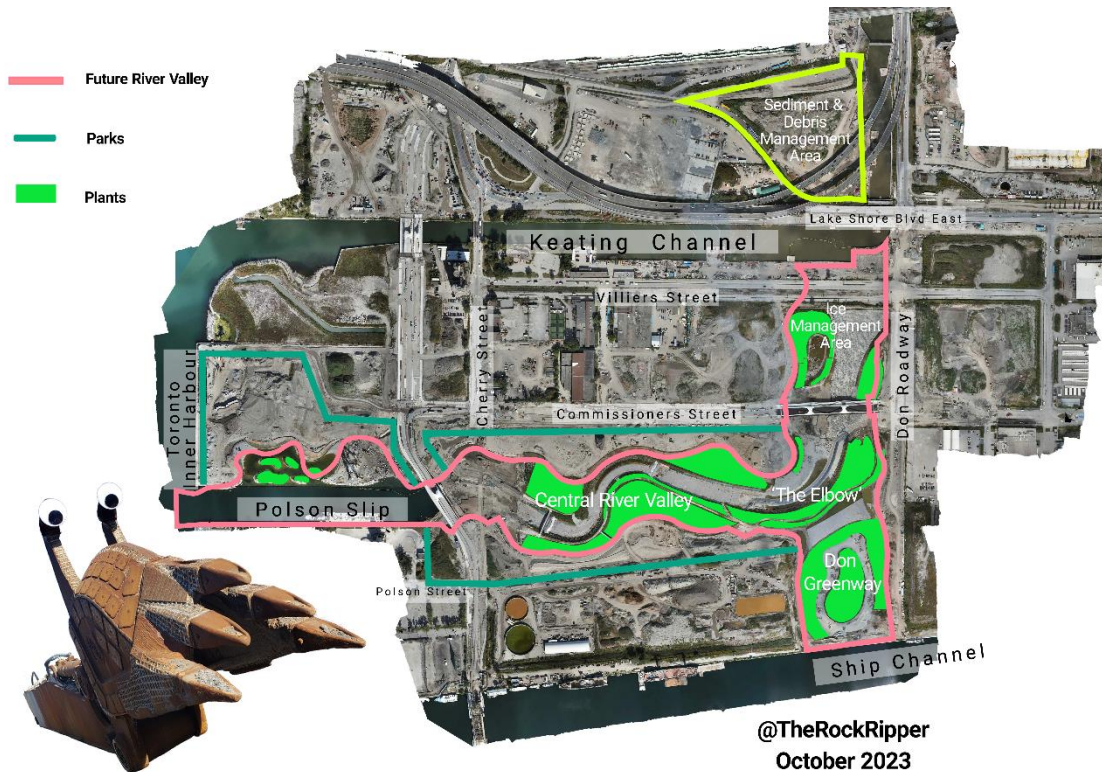
Above: a map showing the location of the lane closures on Lake Shore Boulevard East.

What to expect:

- **Lake Shore Boulevard:** Monday October 16 to Wednesday October 18: One lane will be open in each direction on Lake Shore Boulevard East. Closed lanes will be marked with traffic cones, flag persons and Paid Duty Officers
- **Lake Shore Boulevard:** Thursday October 19 to Sunday October 22: Lake Shore Boulevard will be reduced to one shared lane with alternating direction of traffic controlled by flag persons, paid duty officers and traffic cones
- **Lake Shore Boulevard:** Monday October 16 to Monday October 23, there will be intermittent lane closures of one westbound lane west of Cherry Street.
- **Don Roadway-DVP Ramp:** Monday October 16 to Sunday October 22: One lane in each direction will be open to access and exit the DVP to Lake Shore Boulevard
- Traffic delays
- Traffic cones, lane closures, flag persons and Paid Duty Officers to control and direct traffic

Construction Update

Planting



Above: A 'Rocky Radar' map showing the areas of the river valley that have been planted.



Above: Planting the islands in canoe cove.

Roads



Above: The Commissioners Street Bridge has been paved.



Above: Sidewalks, curbs, multi-use trail, and the road on the new alignment of Cherry Street.

River Valley Construction



Above: excavation of the 'west plug', near the Cherry Street south bridge.



Above: Armour stone lining the riverbed south of the Commissioners Street bridge.

Questions?

To learn more about this project, please visit the [Port Lands Flood Protection project website \(https://portlandsto.ca/\)](https://portlandsto.ca/).

To send us questions or concerns about construction, use this [online inquiry form \(https://portlandsto.ca/contact-us/\)](https://portlandsto.ca/contact-us/).

You can also email us at plfp@ellisdon.com.

For urgent construction related issues, please contact Cameron Coleman, EllisDon, at 416-594-2198.

Waterfront Toronto

20 Bay Street, Suite 1310, Toronto, Ontario M5J 2N8

T. 416-214-1344 | waterfronttoronto.ca | info@waterfronttoronto.ca

