

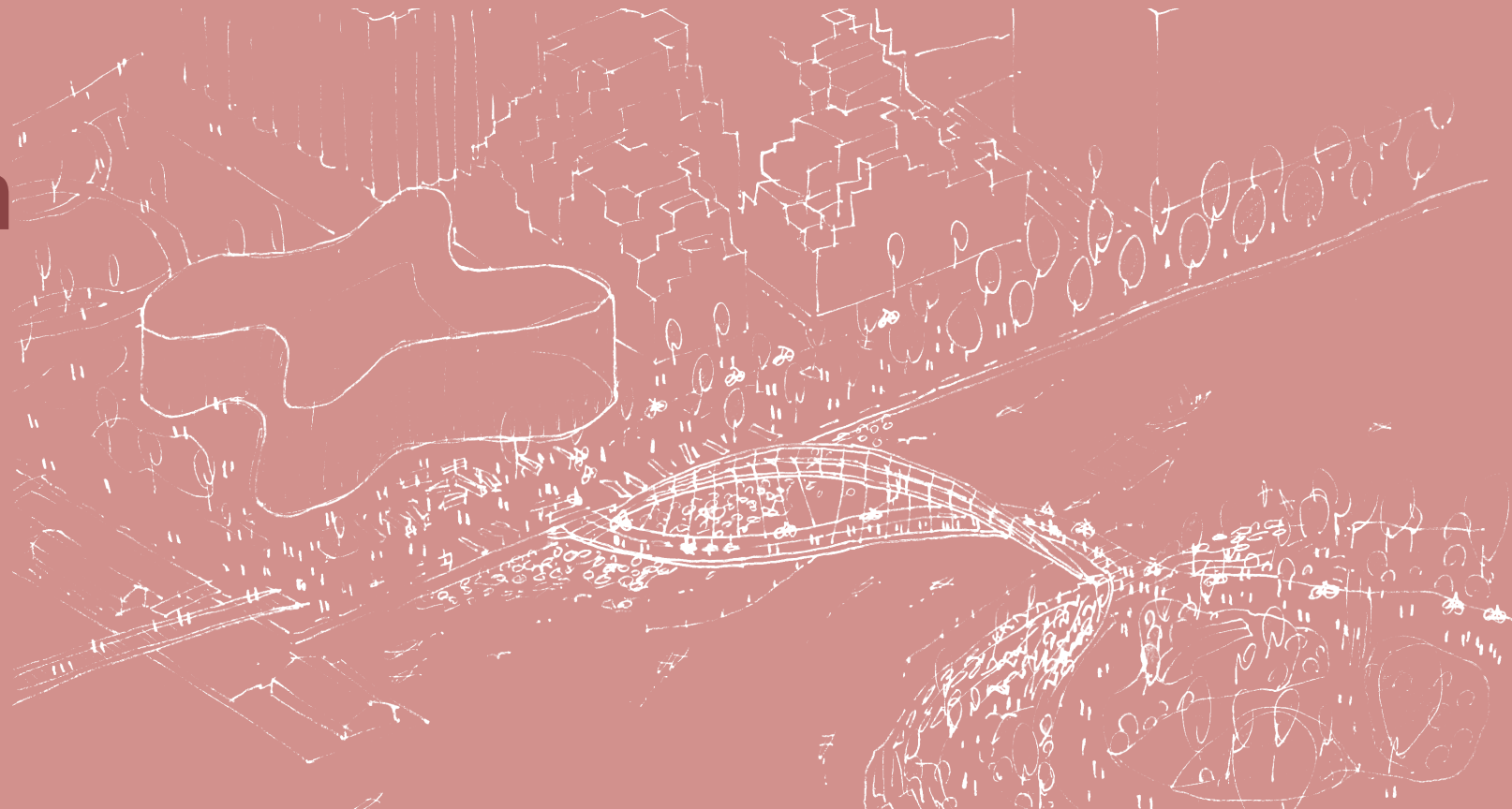
WATERFRONToronto



# The Salmon Run

Keating Channel Pedestrian Bridge

Toronto, Ontario



Design Competition

September 28th, 2023



TWO ROW  
ARCHITECT



RAMBOLL

Henning  
Larsen —

# Our team



Henning  
Larsen —



Matthew Hickey  
Indigenous Design



Daniel Baumann  
Design Partner

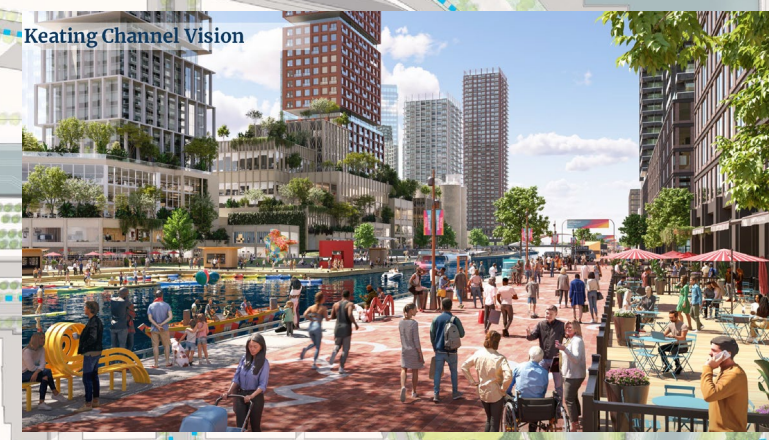
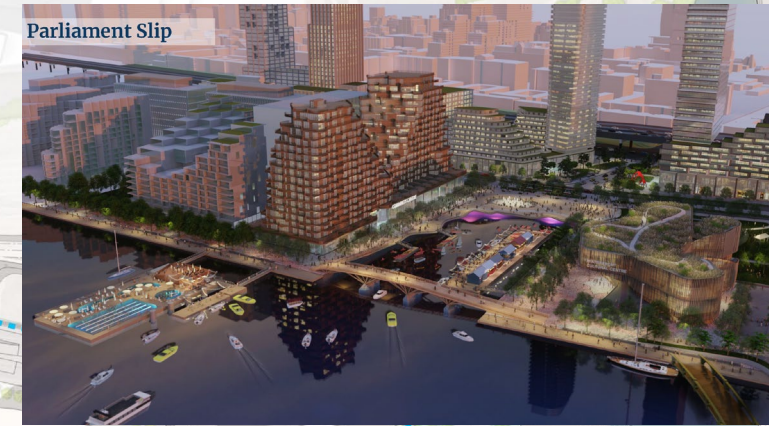


Kritika Kharbanda  
Sustainability Specialist

Opening

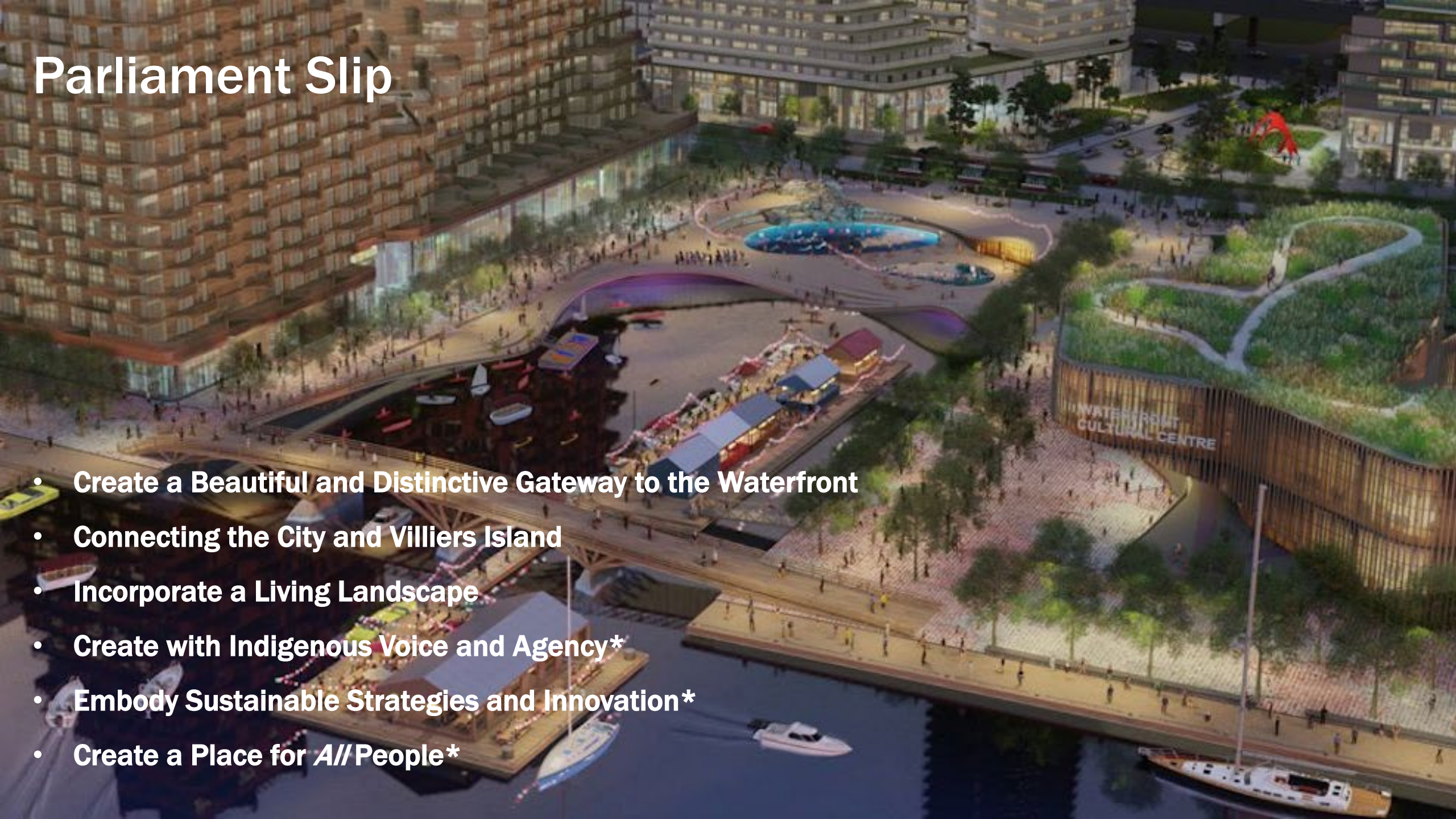


# Urban Context



# Parliament Slip

- **Create a Beautiful and Distinctive Gateway to the Waterfront**
- **Connecting the City and Villiers Island**
- **Incorporate a Living Landscape**
- **Create with Indigenous Voice and Agency\***
- **Embody Sustainable Strategies and Innovation\***
- **Create a Place for *All* People\***



# The Promenade



# Villiers Island



# Water





# A Crossing



# A Crossing



# A Crossing



# A Crossing



# The Journey



# The Salmon Run

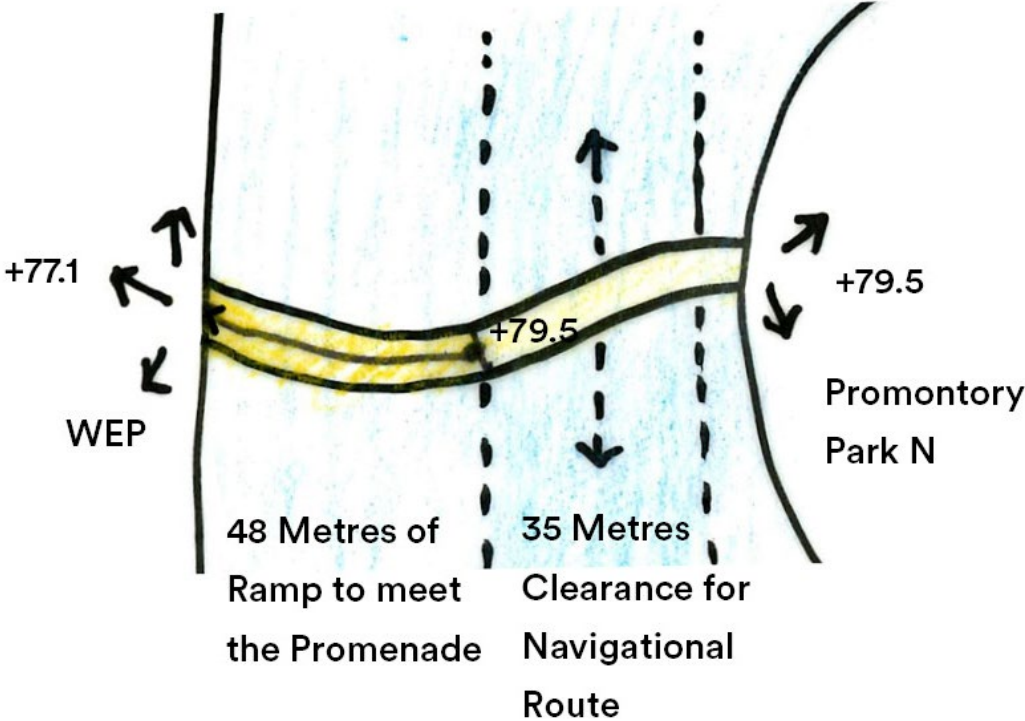




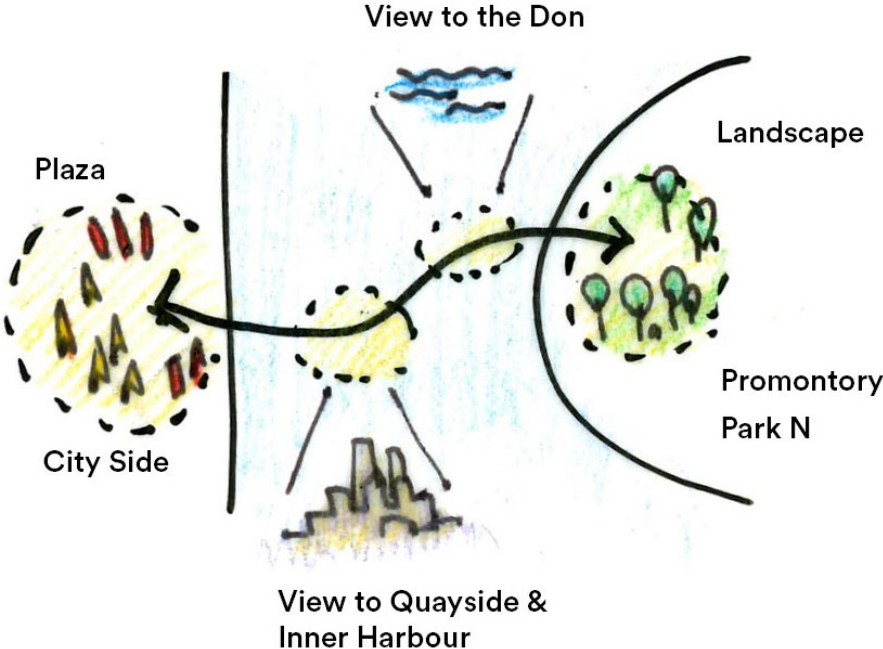




# Creating an Accessible Bridge



# Celebrating the Site

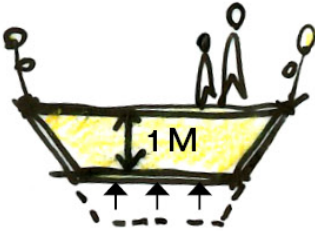


# Minimize Material Use

The Structural Arch

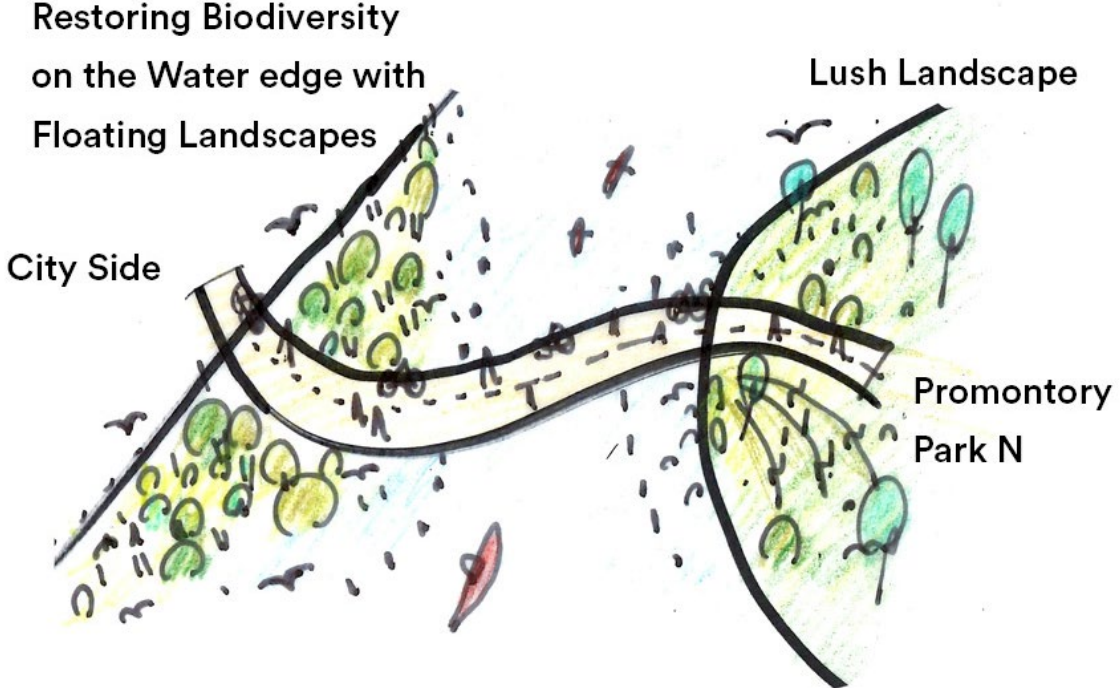


+



Pedestrian Deck  
w/ 1 Metre Depth

# Creating a Restorative Landscape





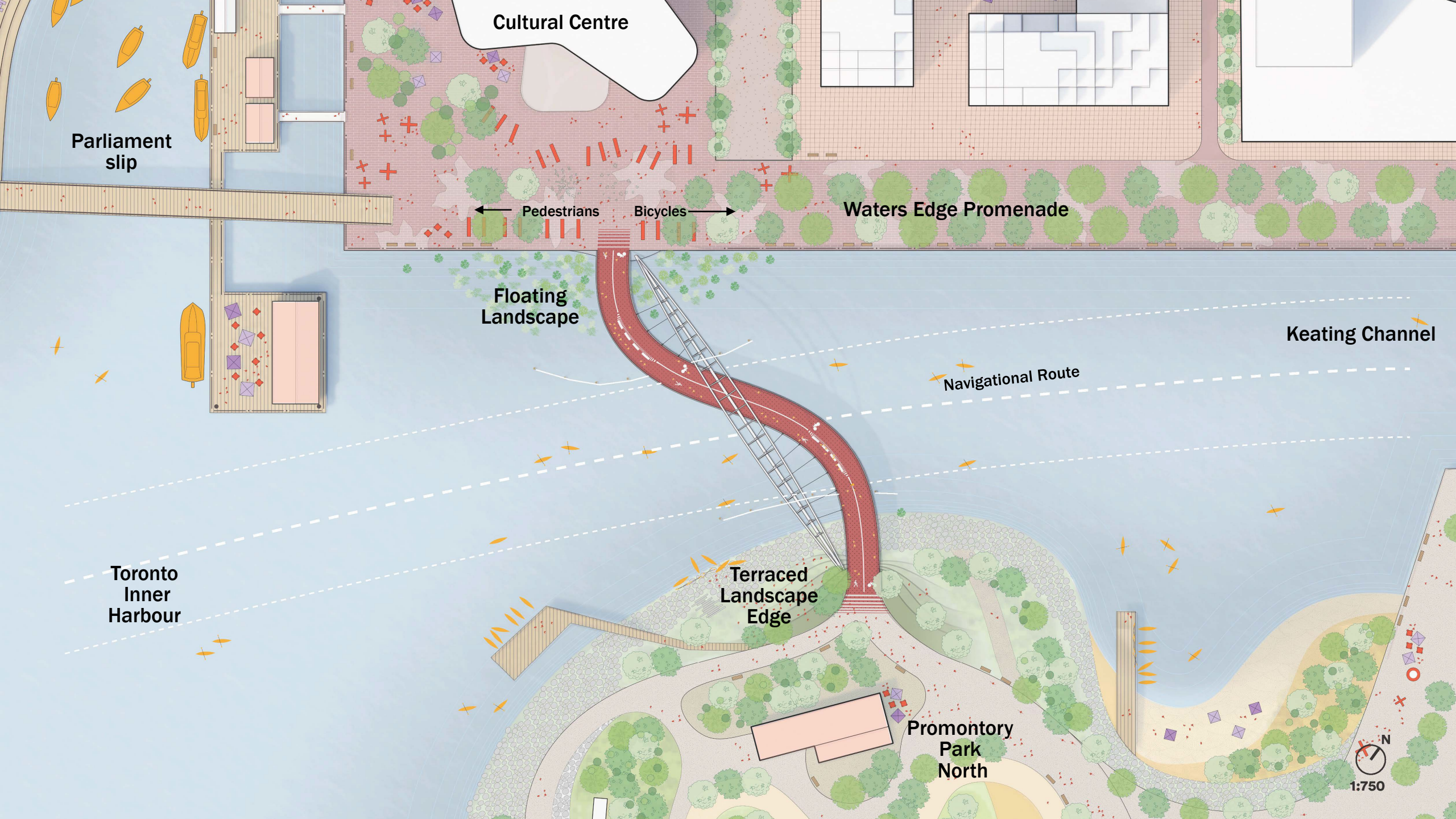
Villiers Island

Promontory  
Park North

Keating Channel

Water's Edge  
Promenade

Floating  
Landscape



Cultural Centre

Parliament slip

Pedestrians

Bicycles

Waters Edge Promenade

Floating Landscape

Keating Channel

Navigational Route

Toronto Inner Harbour

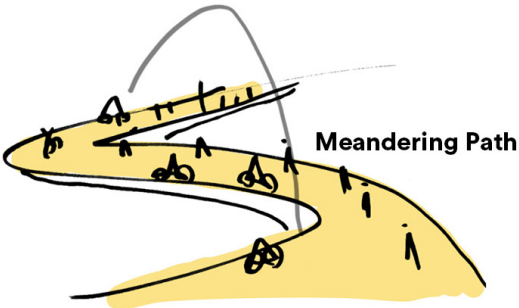
Terraced Landscape Edge

Promontory Park North

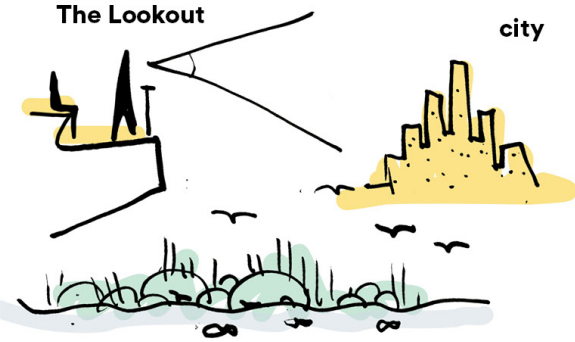
1:750



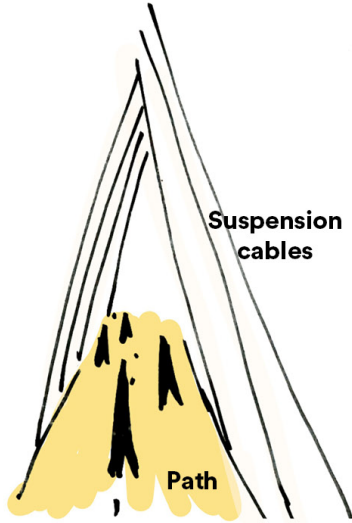
# Celebrating the Threshold



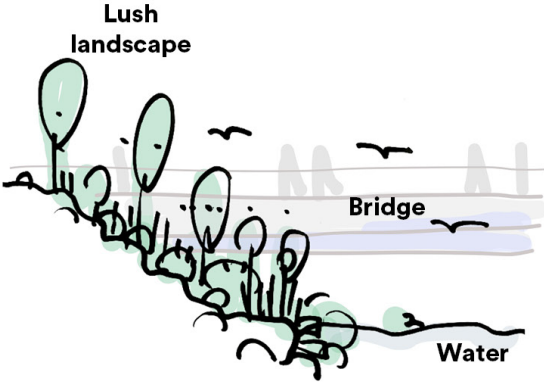
THE APPROACH



CREATING MOMENTS TO APPRECIATE THE WATER AND THE VIEW



CELEBRATING THE THRESHOLD



CELEBRATING NATURE



Villiers Island

Water's Edge Promenade'



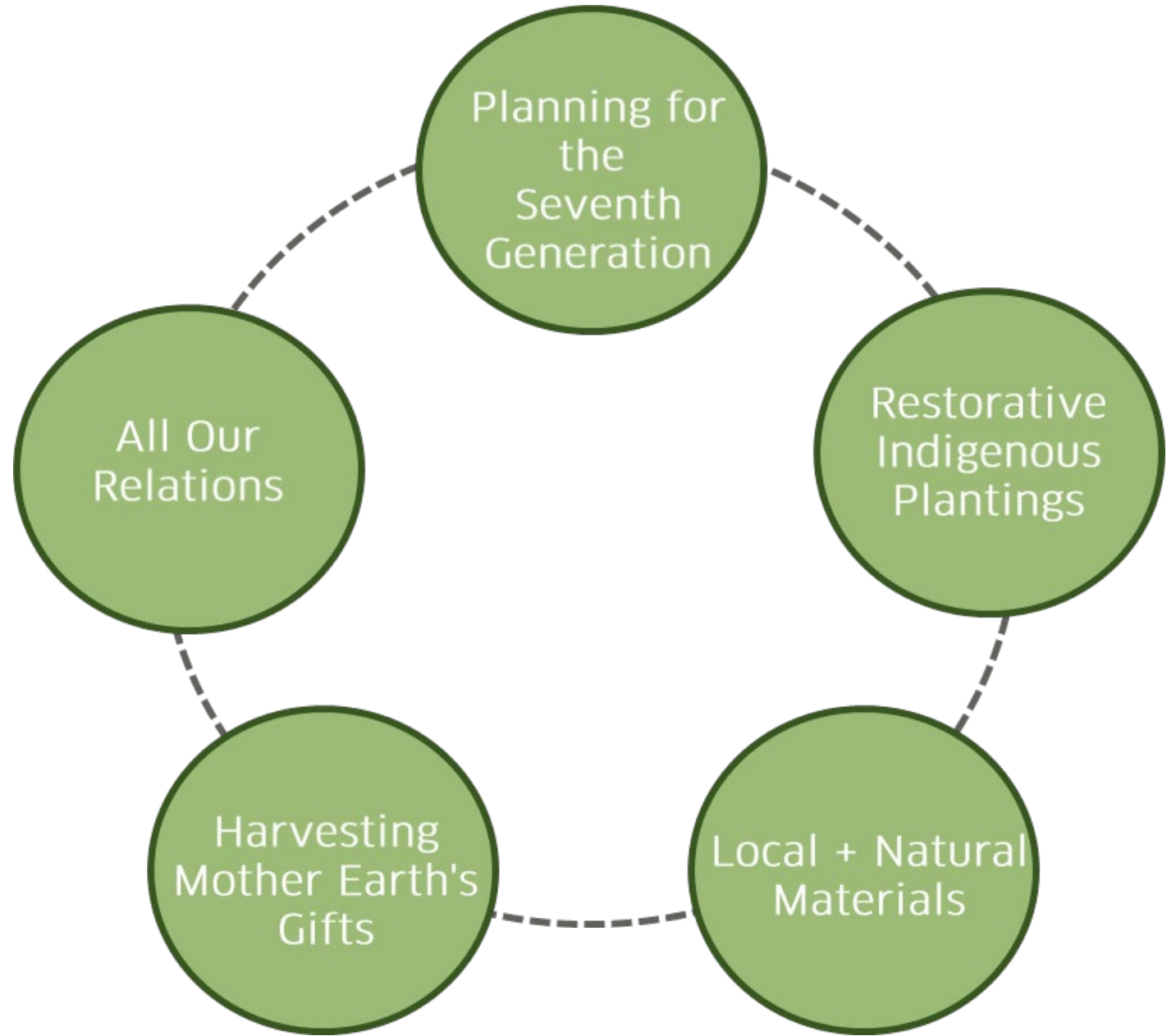


Villiers Island

Keating Channel

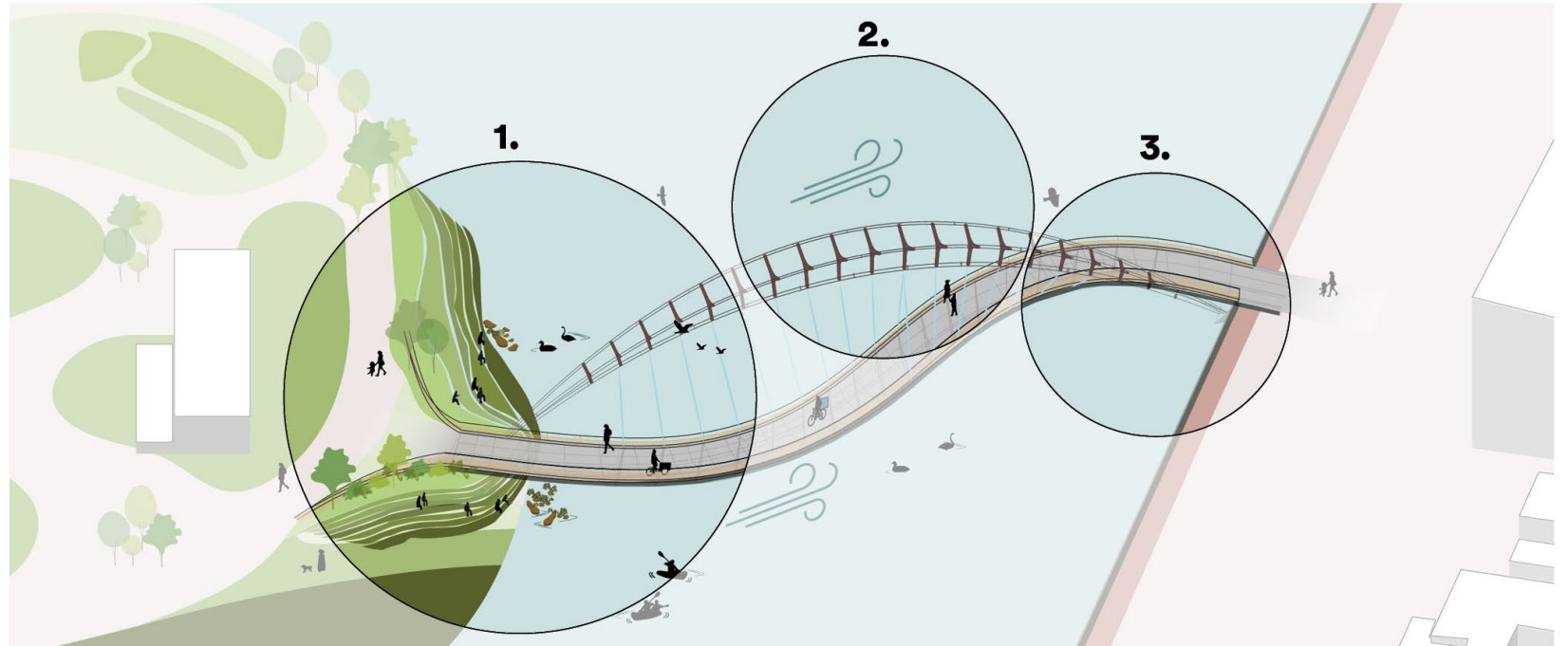
Promontory Park North

# To the Future, To the Past



# 'Layered' Sustainability

Strategies for layers beyond the bridge – the 'skyworld', 'earth,' as well as the 'underworld' ...



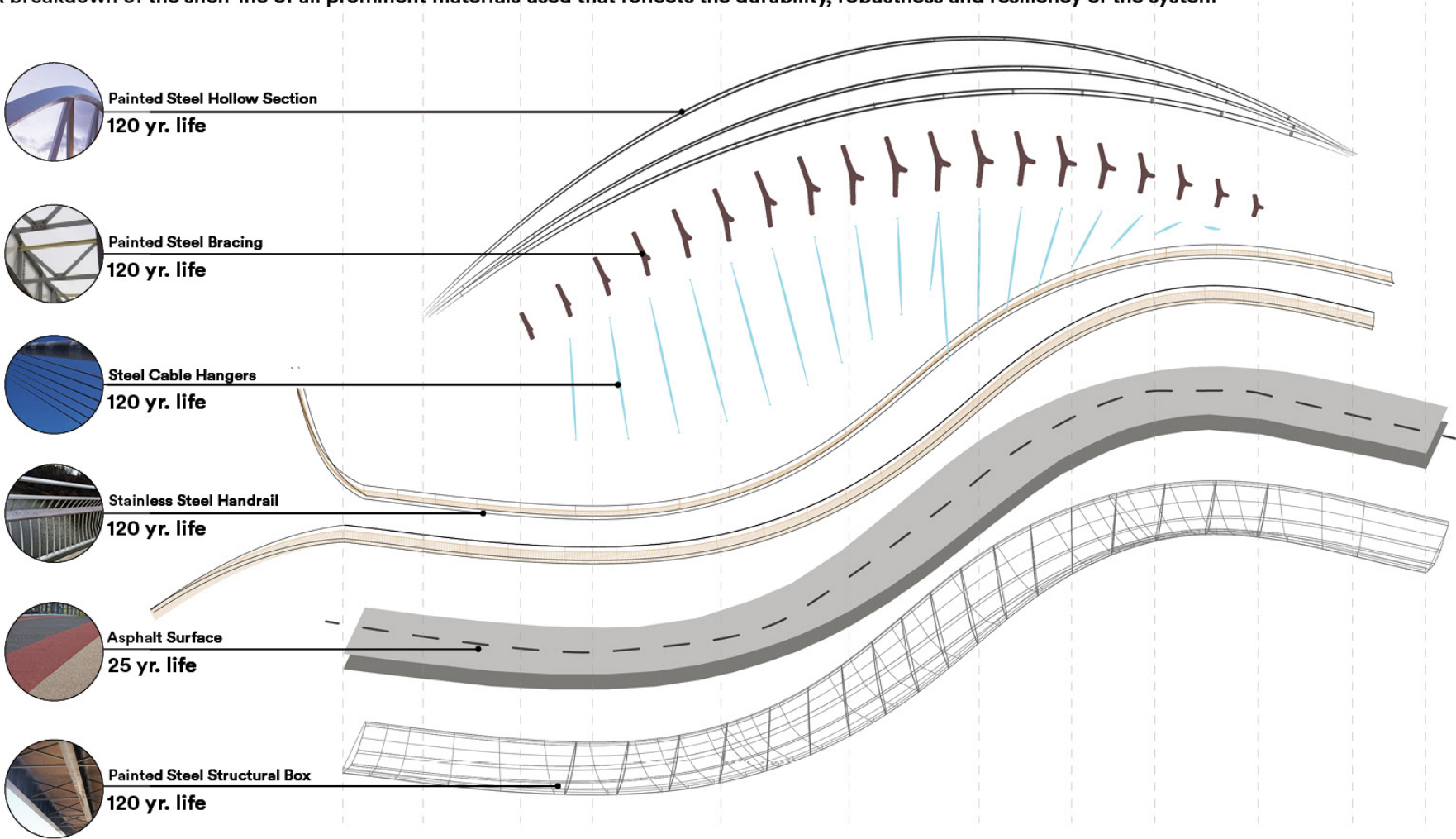
**1. Enhancing Urban Ecology**  
Co-existence of humans & nature as one ecosystem

**2. A Resilient Structure**  
Ensuring a robust form & structure that boasts of longevity against the climate extremes

**3. Ease of Construction & Low Maintenance**  
Evidence-based, Efficient Engineering

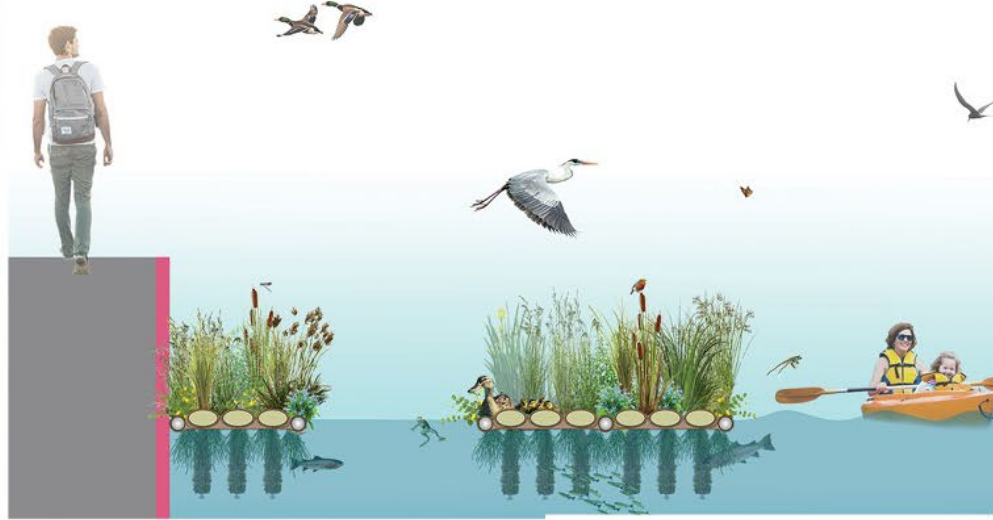
# Life Cycle Considerations

A breakdown of the shelf-life of all prominent materials used that reflects the durability, robustness and resiliency of the system



# Enhancing Bio-diversity

Reference images showing the use of modular, floating landscape systems and their impact on creating biodiversity 'pockets.'



A1 24m<sup>2</sup> 9 modules



A2 35m<sup>2</sup> 12 modules



A3 35m<sup>2</sup> 12 modules



A4 48m<sup>2</sup> 16 modules



B1 59m<sup>2</sup> 20 modules



B2 79m<sup>2</sup> 26 modules











