



September 1, 2023

## **CONSTRUCTION NOTICE #2: Legacy Art Project Toronto**

### ***Background***

The Legacy Art Project is a public space dedicated to the spirit of courage, determination, and action that Terry Fox embodied.

The project design titled, 'We Are Shaped by the Obstacles We Face,' was conceived by artist Jon Sasaki and landscape architect DTAH during a nationwide call for proposals by Legacy Art Project Toronto in collaboration with Art+Public.

Rooted in the legacy of Terry Fox's power to inspire, we see this project honouring our collective heritage, looking to the future, and being an icon of shared values. We envision a place where future generations will be galvanized into inspired action to continue Terry's important work and altruistic spirit.

Located on Queens Quay West, east of the Toronto Music Garden, along the Martin Goodman Trail, construction of the Legacy Art Project will begin in July 2023, with estimated completion in fall 2023.

The park is made possible by individual donors, the Government of Canada through the Federal Economic Development Agency for Southern Ontario, the City of Toronto, and the Waterfront Business Improvement Area (BIA). Waterfront Toronto is the project manager and a key partner.

### ***Updates***

#### **Tree Removal**

Due to an unforeseen site condition, our contractor, Somerville Construction, will remove one (1) Crabapple tree on site near the northeast corner of the site as shown in Figure 1. Due to the impending safety risk, this work will take place immediately on Friday, September 1, 2023. On-site investigations of the tree revealed that the tree is unstable due to its root conditions and poses a safety risk to users of the surrounding park area and Martin Goodman Trail. Despite best efforts to save the tree, mitigation of the tree's instability is not feasible and the recommendation to remove the tree was supported by Urban Forestry.

The tree will be replaced with 3 trees in accordance with the City of Toronto's bylaw regarding tree removals, which are subject to a replacement ratio of 3:1.

### ***What to expect***

1. Moderate noise is expected.
2. Construction vehicles will be active on-site.

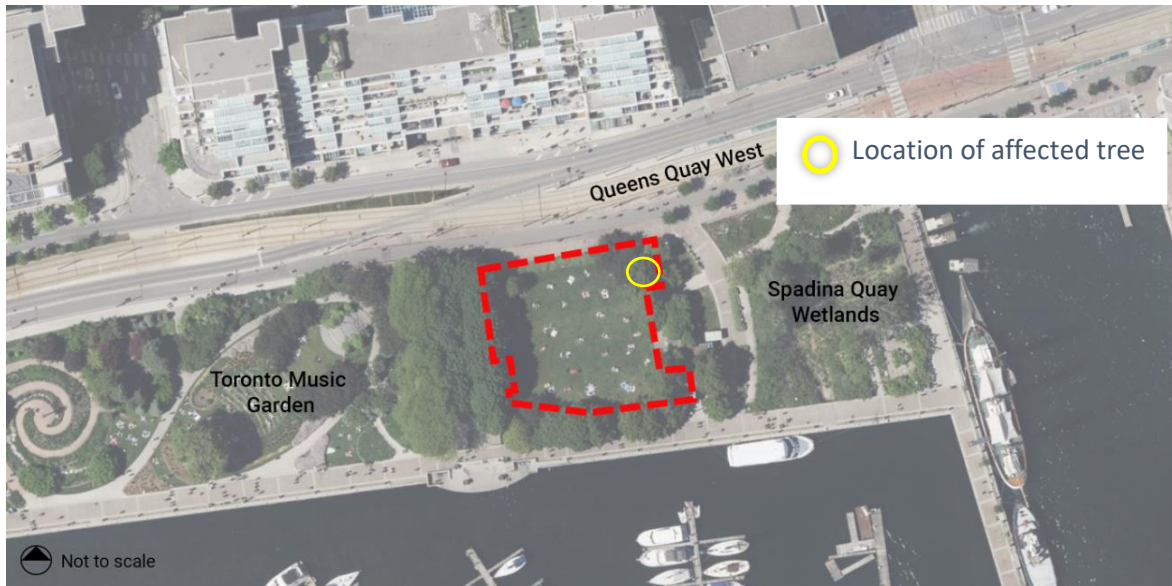


Figure 1 – Location of the hazardous tree to be removed following an investigation of its soil and root conditions.

### Questions

For more information on the project please visit The [Legacy Art Project Toronto website](#).

For any specific questions or concerns related to construction of the project please email Waterfront Toronto [info@waterfronttoronto.ca](mailto:info@waterfronttoronto.ca).