



Master Plan view looking northwest

A Neighbourhood That Aspires To Improve the Lives of Its Residents and Visitors Alike.

Quayside is a small piece of land on Toronto’s downtown eastern waterfront with big ambitions. It will soon be home to a sustainable community that will provide a high quality of life for people of all ages, backgrounds, abilities, and incomes – a 21st Century urban district that is dynamic, inclusive, and resilient. Quayside is the cornerstone in Waterfront Toronto’s vision for a world-class, complete community, and a key connection between the downtown waterfront, surrounding neighbourhoods and the future Villiers Island.



The Timber House



The Western Curve

net
0

all-electric master
planned community

3.5
acres

of public space including
a 2 acre community forest

800+
units

of affordable
housing units

Join us online



Waterfront Toronto
20 Bay Street, Suite 1310, Toronto, ON M5J 2N8
T. 416.214.1344 / info@waterfronttoronto.ca / waterfronttoronto.ca

6 Quayside



The Western Curve



The Overstory



The Timber House

The Vision

Quayside will be a complete community, where residents will have housing, recreation, green space, community services and easy access to the necessities of daily life, like shopping, food, mobility and parks and public space – all within a community that welcomes everyone, takes sustainability to a new level, and offers a vibrant and energetic experience in a beautiful setting.

Guiding Principles

Quayside’s development is guided by the following principles that set a shared attitude towards design throughout the master plan, the public realm and the iconic architecture:

A Neighbourhood and a Destination

Quayside is a place for those who call it home and those who come from near and far to visit. This duality is supported through fluid indoor/outdoor activation, varied programming that serves various scales of community, and active public spaces designed for all seasons.

The Connector

Quayside is at the hinge-point where Greater Toronto connects with the waterfront. We embrace this nature by creating vibrant networks of mid-block POPS, interwoven with lively streets along Parliament and Queens Quay East.

Inclusive by Design

Inclusivity is intrinsically built-in through an accessible public realm in tandem with active programs that form a complete community. At Quayside we will partner with institutions and community groups that share in our goals for diversity and social advancement.

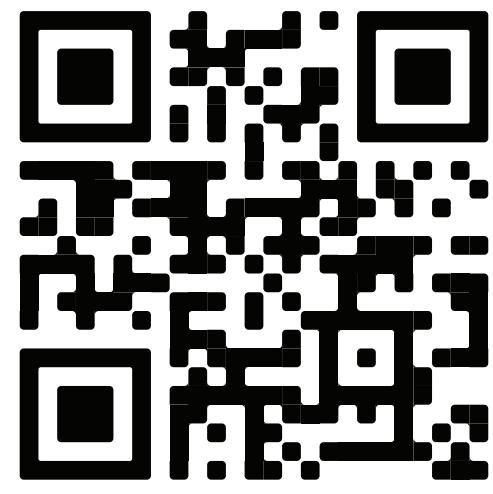
Living with Nature

At Quayside, sustainability will be built-in as a lifestyle where Toronto’s goals are met, exceeded and ingrained into every aspect of the plan. Designs should enhance more symbiotic relationship with the environment by creating a highly resilient, low-carbon community that supports biodiversity.

Cohesive Diversity

The Master Plan leverages our collaboration to build a neighbourhood with the richness of cities built over time. We provide world-class architecture across all scales, finding compliments between iconicity and continuity, self-expression and shared values.

Have your say and help shape
the future of Quayside
Scan here to take our survey



Community Forest looking south through Timber House



Retail along Queens Quay East



Community Forest



Join us online



Waterfront Toronto
20 Bay Street, Suite 1310, Toronto, ON M5J 2N8
T. 416.214.1344 / info@waterfronttoronto.ca / waterfronttoronto.ca





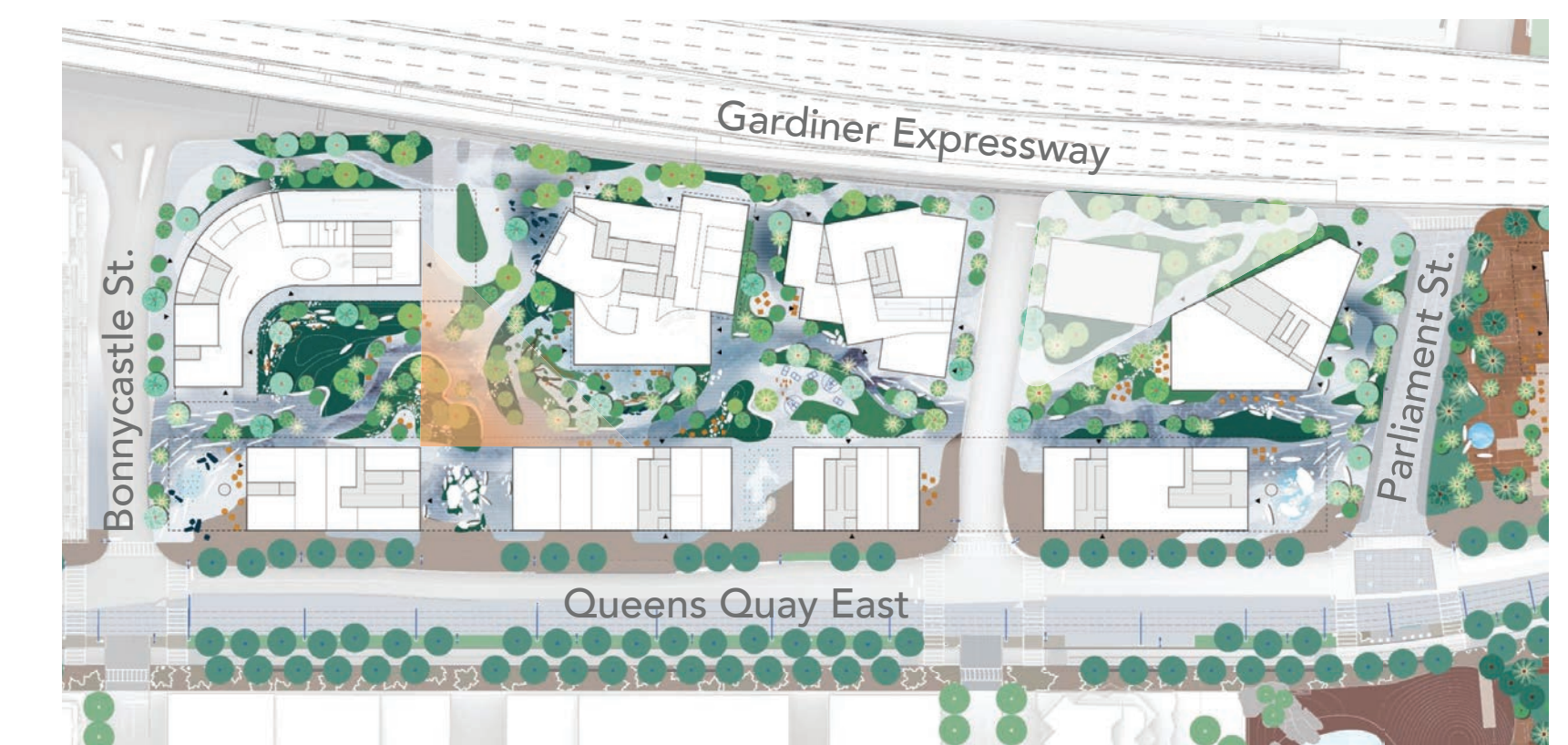
PUBLIC SPACE

We envision Quayside to be a growing community and the perfect example of city-nature - with a connection between the built and natural environment. The public realm will connect the waterfront to the city center.

KEY DETAILS

Community Forest

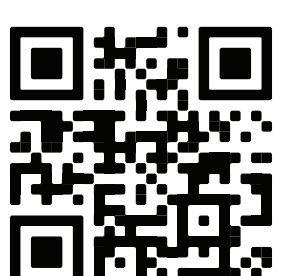
- Quayside will deliver **3.5 acres of public spaces**, including a **2 acre Community Forest**, providing a network barrier-free green space accessible to people of all ages and abilities.
- Seamlessly connecting to planned improvements to Parliament Street, Queens Quay East, and surrounding streets.
- The Community Forest will be based on the flow or nature, providing residents with an all-seasons public space that brings connection to nature.



Community Forest Context Diagram

Have your say and help shape
the future of Quayside
Scan here to take our survey

Visit quaysideto.ca



URBAN FARM



A significant urban farm will be built atop Timber House, which will be one of Canada's largest residential mass timber buildings when complete.

KEY DETAILS

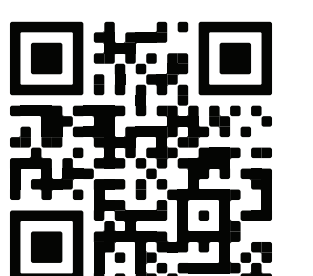
We have dedicated a generous rooftop space for urban agriculture. The Urban Farm promotes a healthy environment as well as a sustainable lifestyle. It also raises awareness about food security and provides healthy food choices through self-sustained community gardens, which is also a great tool for social engagement and establishing a sense of belonging.



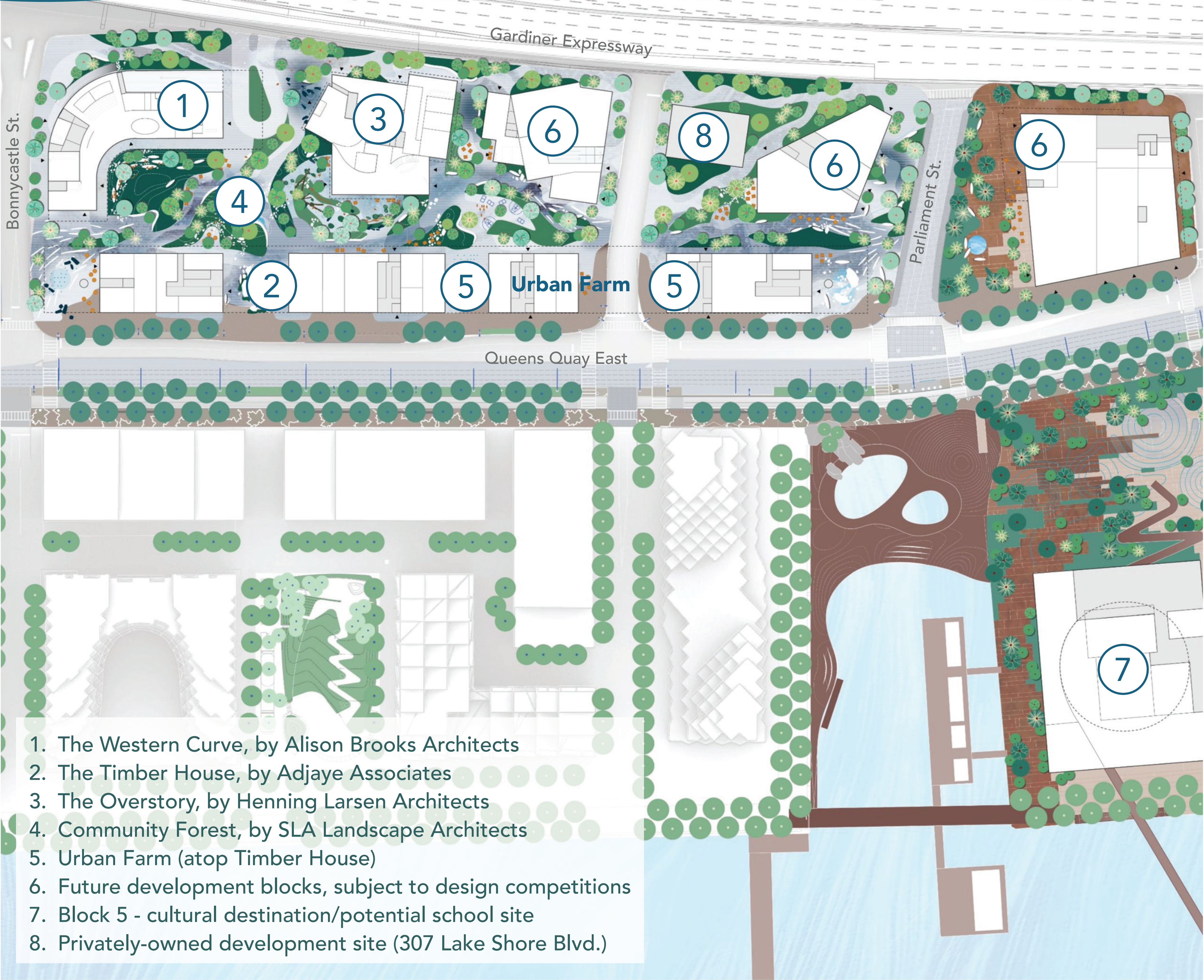
Urban Farm Rendering

Have your say and help shape
the future of Quayside
Scan here to take our survey

[Visit quaysideto.ca](https://www.quaysideto.ca)



MASTER PLAN



Quayside will be part of a new hub in Toronto's eastern downtown waterfront that is home to over 80,000 residents and 40,000 jobs within a 15-minute walk. The area totals 12 acres, about the size of six soccer fields. The Quayside Master Plan includes space for residential, retail, entertainment, community care, cultural, and office uses, creating a complete community where residents can live, work, and play.

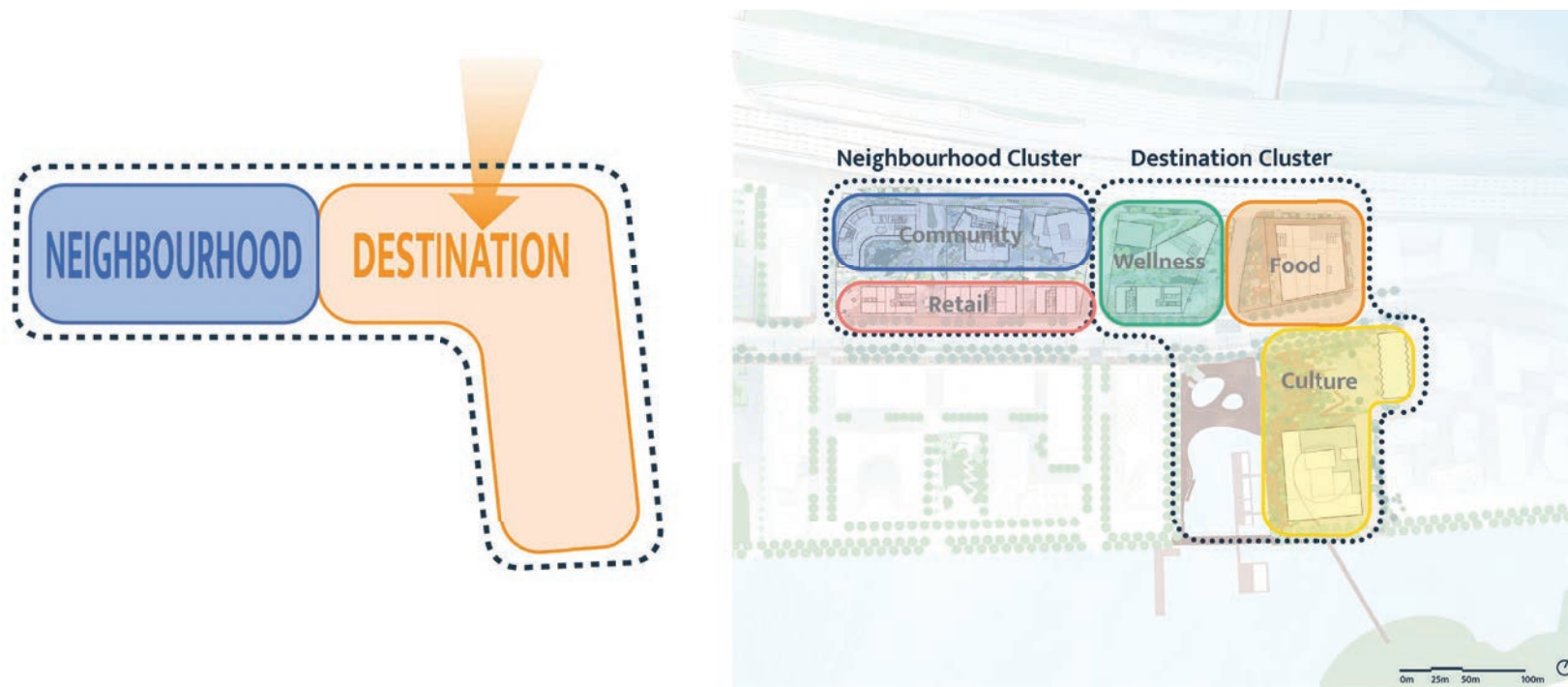
KEY DETAILS

Public amenities (Urban Farm, Community Forest)

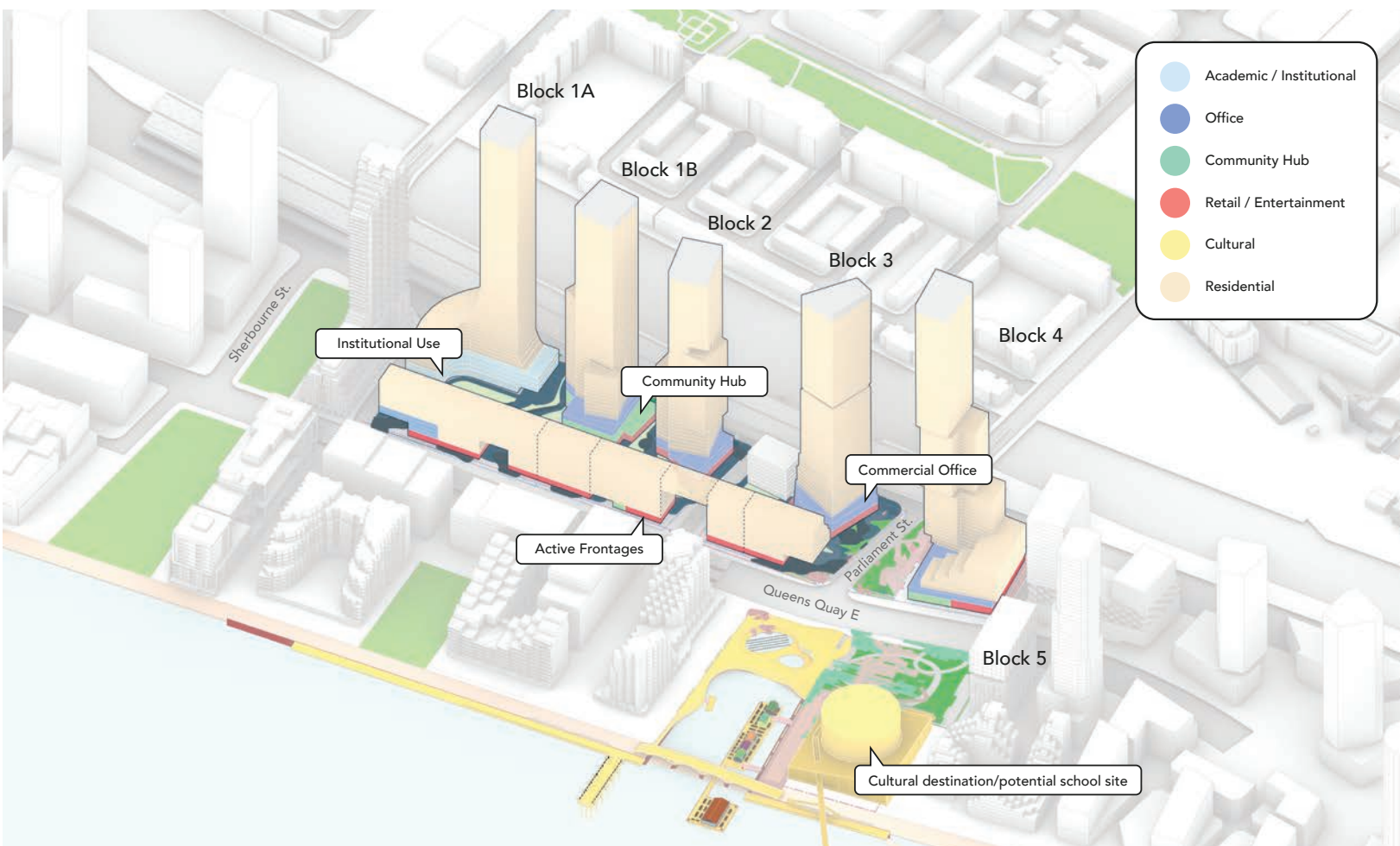
Addressing an urgent need for affordable housing, Quayside will deliver 800+ affordable housing units, with more than half the units being family-sized (2+ bedroom). Affordable housing will be built in each phase of the development, so that units can be delivered faster.

Parking below grade

Community Care Hub - an integrated health, community and social services centre, providing services to support residents, and particularly low and middle income residents and those from Equity-Seeking Groups.



Animation & Programming



Programming & Uses

Quayside



Have your say and help shape
the future of Quayside
Scan here to take our survey

Visit quaysideto.ca



VISION & GUIDING PRINCIPLES

Have your say and help shape
the future of Quayside
Scan here to take our survey

Visit quaysideto.ca



What do you find exciting about Quayside?

Use a sticky note to tell us more

Is anything missing from the vision or guiding principles?

Use a sticky note to tell us more

Which Guiding Principle is most important to you?

Place one sticker on the option that most applies to you

LIVING WITH NATURE

A NEIGHBOURHOOD
AND A DESTINATION

THE CONNECTOR

COHESIVE DIVERSITY

INCLUSIVE BY DESIGN

PUBLIC SPACE, URBAN FARM & MASTER PLAN

Have your say and help shape
the future of Quayside
Scan here to take our survey

Visit quaysideto.ca



What do you find exciting about...?

Use a sticky note to tell us more

PUBLIC SPACE & COMMUNITY FOREST

URBAN FARM

MASTER PLAN

Do you have any questions, or additional comments?

Use a sticky note to tell us more