

## A photograph of a tree in front of a brick building. The tree has green leaves and a light-colored trunk. The building is made of red bricks and has a dark roof. The image is slightly faded and has a soft focus.



**WATERFRONT**Toronto



# Land Acknowledgement

---

The Waterfront Design Review Panel (WDRP) acknowledges that the land and water upon which we are all designing and building has been for thousands of years the traditional territory of many nations, including the Mississaugas of the Credit, the Anishnabeg, the Chippewa, the Haudenosaunee and the Wendat peoples and is now home to diverse First Nations, Inuit and Métis people. The Panel acknowledges that Toronto is covered by Treaty 13 with the Mississaugas of the Credit. The Waterfront Toronto Design Review Panel is committed to promoting architectural and landscape designs that are respectful of the land and water and in harmony with the natural world around them. The Panel is dedicated to giving Indigenous designers opportunities to participate in the development of the waterfront.



Jay Havens, *The Peacemaker's Canoe*, Harbour Square Park.

# Table of Contents

---

1. Introduction
  2. Design Review at a Glance
  3. Projects Reviewed
  4. Summary of Panel Impact
  5. 2022 Waterfront Design Review Panel Awards
    - Nominees and Winners
  6. Panel Membership
  7. Administration
- Appendix
- List of Proponents

## **Waterfront Design Review Panel Members**

Paul Bedford, Chair  
Betsy Williamson, Vice Chair  
George Baird  
Peter Busby (through September 2022)  
Claude Cormier (through December 2021)  
Gina Ford (appointed March 2022)  
Pat Hanson  
Matthew Hickey (appointed January 2021)  
David Leinster (appointed March 2022)  
Janna Levitt  
Fadi Masoud  
Nina-Marie Lister  
Emily Mueller De Celis (appointed March 2022)  
Jeff Ranson  
Brigitte Shim  
Kevin Stelzer (appointed January 2020)  
Eric Turcotte

## **Designated Representatives**

Chris Glaisek (Waterfront Toronto)  
Emilia Floro (City of Toronto, from April 2021)  
Lorna Day (City of Toronto, through March 2021)

## **Manager, Design Review Panel**

Leon Lai (Waterfront Toronto)

## **Special Thanks**

James Parakh  
Deanne Mighton  
Halija Mazlomyar

# Message from Chair

---

Toronto's waterfront is a very special place that belongs to everyone. This report documents an ongoing and unique journey with a talented group of city-building professional colleagues to help ensure that our waterfront achieves the highest standard of excellence in public realm, built form design and quality of place. We are guided by a continuous desire to remove barriers and make connections.

As this report indicates, the panel has provided valuable input into a long list of Buildings, Master Plans, Infrastructure Projects in addition to Parks and Streetscapes. Recognition of these projects in the categories of Residential Design, Commercial/Institutional Design, Public Landscape Design and Planning/Urban Design was celebrated at an Awards ceremony in October 2022. The overall goal has been to ensure that all public and private sector initiatives maximize quality, embody leading edge standards of sustainability and achieve public benefits that will stand the test of time.

Since its inception in 2005, the Waterfront Design Review Panel has established a strong track record of leading with landscape in order to create a place of discovery and enjoyment where the general public would feel both welcome and at home. The redesign of Queen's Quay Boulevard, the development of entirely new neighbourhoods and the establishment of new parks and a commitment to developing a continuous pedestrian promenade adjacent to the waterfront around the inner harbour are key features of our evolving waterfront. In addition, the creation of HT0 Park, Corktown Common, Sugar Beach and the East Bayfront Boardwalk have all become favourite places for the public to experience a unique opportunity to see, feel and touch the waterfront up close and personal. The opening of Love Park at York Street and Queen's Quay in the spring of 2023 and the future development of the Quayside mixed-use project on the Parliament slip will contribute new energy and vibrancy to the waterfront.

Perhaps the most ambitious project to come before the panel is the Port Lands Flood Protection. It is bold, inspired and unprecedented in scope and scale involving a commitment of \$1.25 Billion from all three levels of government. Reclaiming the mouth of the Don River by establishing a new river channel through the Port Lands will create a totally new park system that will define our waterfront for generations to come. This initiative will also result in the development of a major new waterfront neighbourhood on Villiers Island along with a major new park overlooking the inner harbour. It represents the realization of a 50-year dream that has received global attention.

As a founding member since 2005, I have been privileged to chair the panel since 2017-I look forward to making an ongoing contribution to help make our waterfront a place of astonishment for all Torontonians.



Paul Bedford  
Chair, Waterfront Design Review Panel



# Introduction

---

The Waterfront Design Review Panel Annual Report summarizes the Panel's activities over the past year and demonstrates ways the Panel has helped shape projects to deliver a great waterfront. Since its inception in 2005, the WDRP has held 158 meetings and provided critical design commentary on 135 different project proposals for buildings, landscapes, infrastructure, and master plans in the waterfront. This inaugural Annual Report encompasses the projects reviewed in the past three years, from 2019 to 2021, and the 2022 Waterfront Design Review Panel Awards.

## Mandate

The Panel is an advisory body that reviews proposals in the Designated Waterfront Area and makes recommendations to individual proponents, the City of Toronto, and Waterfront Toronto. Its mandate is to promote design excellence, improve environmental performance, and ensure a cohesive approach to waterfront revitalization. The Panel adds value to projects by providing expert advice that is professional, fair, and constructive.

## Membership and Governance

The Panel consists of 15 members and includes some of Canada's most accomplished city-building professionals in architecture, landscape architecture, urban design/planning, engineering, and sustainability. The Panel meets 10 times a year and reviews projects at various stages of their development, including Issues Identification, Schematic Design, and Detailed Design, depending on the project. At the Schematic Design and Detailed Design stages, the Panel votes in either Full Support, Conditional Support, or Non-Support of the design proposal.



Design Review Panel members. From left: Jeff Ranson, Nina-Marie Lister, Eric Turcotte, Emilia Floro (Non-voting representative of City of Toronto), Paul Bedford, George Baird, Fadi Masoud, Pat Hanson, Christopher Glaisek (Non-voting representative of Waterfront Toronto), Betsy Williamson, Leon Lai (Manager, Design Review Panel). Not included in photo: Brigitte Shim, Janna Levitt, Kevin Stelzer, Matthew Hickey, Gina Ford, Emily Mueller De Celis, David Leinster.

## Design Review At a Glance (2019 – 2021)

---



20

Buildings and P.O.P.S.

33

Panel Meetings



16

Public Parks and Streetscapes

69

Individual Review Sessions



4

Master Plans

54%

Full Support Votes



3

Infrastructure Projects

33%

Conditional Support Votes



5

For Information

13%

Non-support Votes

# Projects Reviewed

---

## Buildings and P.O.P.S.

Hotel and Office Building, 11 Bay Street  
Residential Building, 162 Queens Quay  
Residential Building, 200 Queens Quay West  
Office Building, 30 Bay St.  
Residential Building, 350 Queens Quay West  
Office Building 3C PL1, 324 Cherry St.  
Residential and Office Building, 545 Lakeshore Blvd.  
Residential and Commercial Building, 55 Lake Shore Blvd. E. Block 4  
Studio City, Commercial Building, 915-945 Lakeshore Blvd. West  
Office Building T3 Bayside Phase 1, 251 Queens Quay West  
Lumberlost Place, 185 Queens Quay East  
Mixed-use Building, Phases 4 & 5, 1-7 Young St.  
Outer Harbour Rowing Facility, 475 Unwin Avenue  
Indigenous Hub, West Don Lands Block 10, 425 Cherry St.  
Rekai Centre, 55 Eastern Ave.  
Canary Landing Residential Building, West Don Lands Block 8, 125 Mill St.  
Canary Landing Residential Building, West Don Lands Block 20, 125R Mill St.  
Residential Building, West Don Lands Blocks 3/4/7, 90 Mill St.  
TR3 Data Centre, 43 Parliament/ 281 Front St. East  
Corleck Building, 3 Eireann Quay  
**20 Total**

## Master Plans

Quayside MIDP  
Toronto PIC Core Urban Design Guidelines  
Eireann Quay Streets and Public Realm Plan  
Lakeshore Blvd. E. Public Realm  
**4 Total**

## Infrastructure Projects

Enbridge Station A, 60 Trinity St.  
Waterfront East LRT Area 1  
Waterfront East LRT Area 2  
**3 Total**

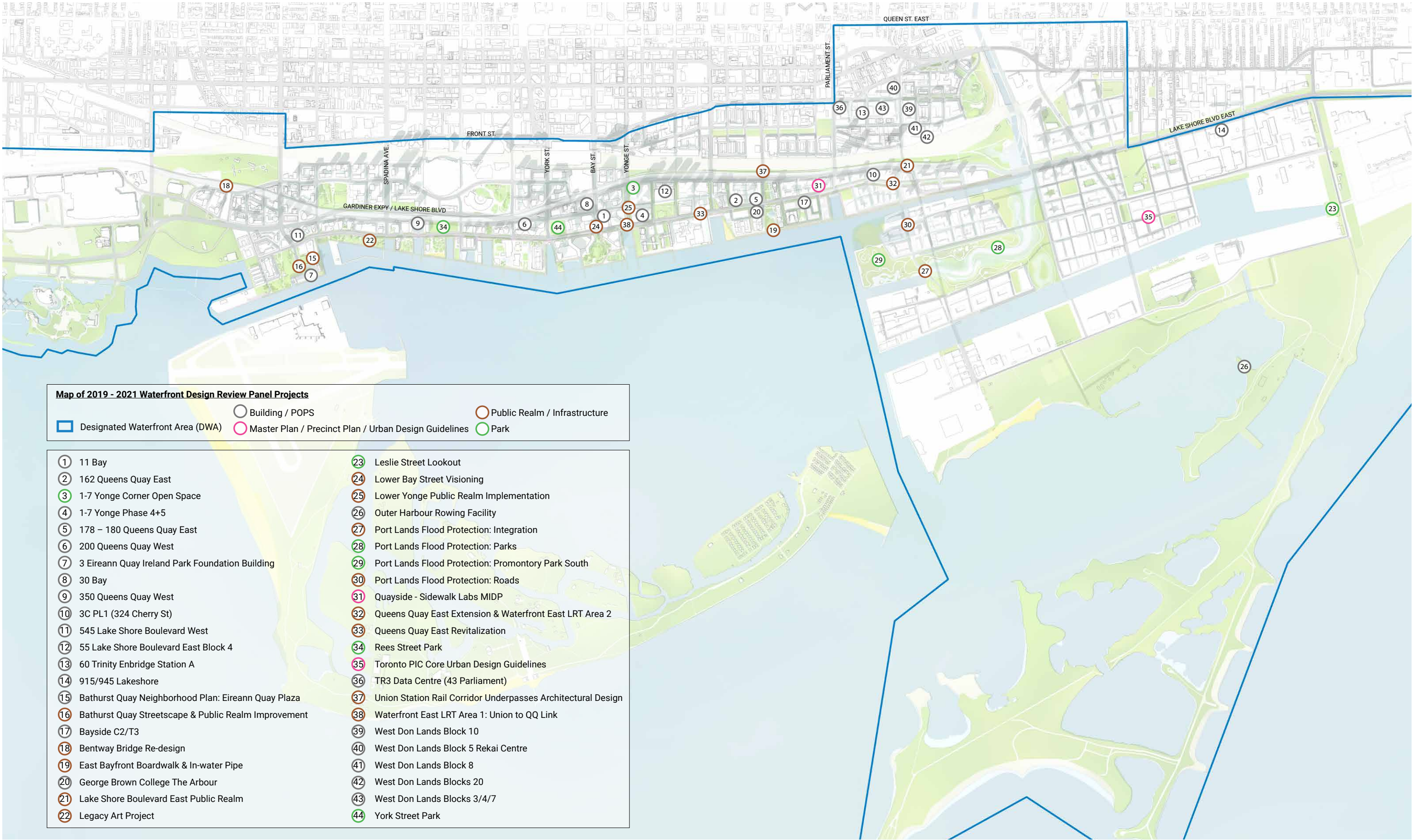


## Parks and Streetscapes

1-7 Yonge St. Corner Public Space  
Eireann Quay Plaza  
Bentway Bridge  
East Bayfront Boardwalk  
Legacy Art Project: Public Realm  
Leslie Street Lookout  
Lower Bay St. Public Realm  
Lower Yonge Public Realm Implementation  
Port Lands Flood Protection: Parks  
Port Lands Flood Protection: Design Integration  
Port Lands Flood Protection: Roads  
Queens Quay E. Revitalization  
Rees Street Park  
York Street Park  
Union Station Rail Corridor Underpasses  
**16 Total**

## For Information Items

Marine Strategy Update  
Waterfront Visioning  
Waterfront Public Art Policy Overview and Update  
USRCE Pedestrian & Cycling Connectivity Study  
Waterfront Green Building Requirements  
**5 Total**





# Summary of Panel Impact

The Design Review Panel's feedback reflects important contemporary themes in city-building. Many of these themes, such as reducing embodied carbon, span project types from residential towers to parks to infrastructure. Others, like ground floor animation, focus on the design of facades, storefront spaces, and the immediately surrounding public realm. Contextual responsiveness is considered from the macro scale of building massing to the micro scale of materials and detailing. Collectively, these and other themes center on the broader goal of deriving as much public benefit as possible within each project's constraints.

## Context and Character



### WDL Block 20:

The Panel encouraged the design team to develop a finer-grain facade alternative to the extensive use of glass walls at grade, to be more in keeping with the scale of the retail frontages in the neighbouring Distillery District. The Panel also recommended using brick on the podium rather than just on the towers to reflect the Distillery District's use of brick on large warehouse buildings.

### Leslie Lookout:

The Panel encouraged the design team to respond to the industrial context of the Port Lands through incorporating authentic artifacts, rather than relying solely on modern representations like the "gears." The Panel also recommended a less formal, messier, language for the design to reflect the "urban wild" character of nearby places like the Leslie Street Spit.



### Queens Quay East LRT Areas 2:

The Panel encouraged the design team to rethink some of the materials proposed for the TTC turnaround loop open space to better reference the character of nearby Corktown Common and reflect the extensive use of brick as a paving material in the Distillery District.

## Open Space Usability / Connectivity

### 200 Queens Quay:

The Panel encouraged the design team to consider the POPS as part of the existing network of open spaces and develop the design to enhance the existing north-south public realm connections to Queens Quay, improve overall pedestrian desirability next to the Gardiner structure, and help draw movement to the waterfront. The Panel also recommended to shift the west tower to increase tower separation distance, allowing more natural light to penetrate the ground floor open space.



### Bentway Phase 2:

The Panel encouraged the team to provide indicators to slow down cyclists at the bridge to ensure all modes of movement, from walking, cycling, to people who meander and would like to stand and observe, can be successfully accommodated. The Panel recommended the team to break up the length of the uninterrupted segment of the path by adding more points of access, such as vertical access stairs, to improve ease of access and safety. The Panel also recommended the design team to provide adequate lighting under the bridge structure to ensure safety for users especially at night.



### 350 Queens Quay West:

The Panel noted encouraged the project team to improve overall ground floor public realm connectivity and visual porosity. Noting the importance of connecting Lake Shore with the Peter Slip Basin public realm, the Panel recommended a new at-grade north-south open-air passageway to help activate the public realm and ensure retail success. Furthermore, the Panel recommended to design an east-west passageway to connect to the future Rees Park, and encouraged the team to realize the connection when there is a change in retail tenancy. As of today, the ground floor lease has expired, and the team has successfully implemented the new east-west connection as part of the design.



## Reducing Carbon Footprint



### Outer Harbour Rowing Facility:

Noting the building is passively cooled and the important ecological context of Outer Harbour, the Panel felt the project is well positioned to achieve beyond net energy zero and encouraged the design team to strive for carbon zero. The Panel recommended to reverse the sawtooth roof direction to maximize indirect light while providing optimal south-facing roof angle for photovoltaics to capture solar energy and provide operable windows to allow natural ventilation. The Panel also suggested to enhance the building envelope's insulation performance and further refine the siting of the project to reduce construction impact.



### Legacy Art:

The Panel encouraged the team to reduce the carbon footprint for the project by specifying low carbon concrete for the foundations and pavement, which will substantially lower the embodied carbon in the construction of the project. The Panel also recommended the specification of a sustainably sourced wood for the benches, such as Black Locust, thermally modified Ash, or Yellow Cedar.

### Queens Quay East Area 1:

The Panel encouraged the team to raise the sustainability objectives and design a net-zero station. The Panel recommended reducing the embodied carbon in the construction material by specifying low carbon reinforced concrete, and lowering operational carbon emissions by tapping into Enwave's geothermal loops for the unheated station building.



## Ground Floor Animation



### 545 Lake Shore Boulevard West:

The Panel encouraged the team to create a finer grained ground floor retail experience and recommended to break up the large ground floor retail spaces into smaller units. The Panel member suggested the team to design a neighborhood-like Queens Quay ground floor that is different from the Loblaw's on Lake Shore.

### T3 Bayside Phase 1:

The Panel encouraged the design to improve ground floor animation and reconfigure the ground floor to establish continuous retail along Queens Quay East with at-grade entrances. The Panel also recommended to amalgamate the small standalone retail at the corner with the rest of the retail spaces and shift the loading entrance to avoid direct visual alignment with Aitken Place Park.



### Rekai Centre:

The Panel encouraged the design team to create a ground floor experience that provides opportunities for the residents to engage with the street, and foster interaction between residents and the wider community. The Panel supported the exterior bench along the ground floor facade and the entrance canopy that strongly engages with Cherry Street. The Panel also recommended more interesting uses on the ground floor, such as a bar in the common area, and engaging interior finishes to spur animation.



## Resilient Landscape



### Outer Harbour Rowing Facility:

The Panel encouraged the team to design a landscape that supports the rowing facility and the ecological future of the site. Noting the site is an important bird habitat, the Panel recommended to avoid linear, urban, tree placements and design a wild, hydrophilic, seasonal wet meadow landscape with species that can mitigate against rising lake water level while supporting bird breeding. The Panel also suggested a “heavy” green roof with plant species that reinforce the notion of a project within a natural landscape.

### Legacy Art Project:

The Panel encouraged the team to specify resilient and robust meadow species to reduce curation throughout the seasons. Noting the importance of maintenance, the Panel also recommended to carefully design the edges of landscape, such as integrating the existing vegetation north of the site as part of the design, to ensure a balance of species in the long-term.



### Waterfront East LRT Area 2:

The Panel encouraged the team to design a resilient landscape that can withstand the harsh environment of salt and traffic pollution. Noting that narrow planting beds do not perform well in urban environments, the Panel recommended larger, wider planting beds with resilient, native plant species that require little maintenance. The Panel recommended more tree species diversity working together to create visual impact and avoid monoculture. The Panel appreciated the green LRT track and suggested to specify both sedum and turf to ensure success of planting through harsh winters.

# 2022 Waterfront Design Review Panel Awards

In 2022, the Waterfront Design Review Panel inaugurated a biennial awards program to recognize projects and teams that have delivered outstanding designs and built projects.

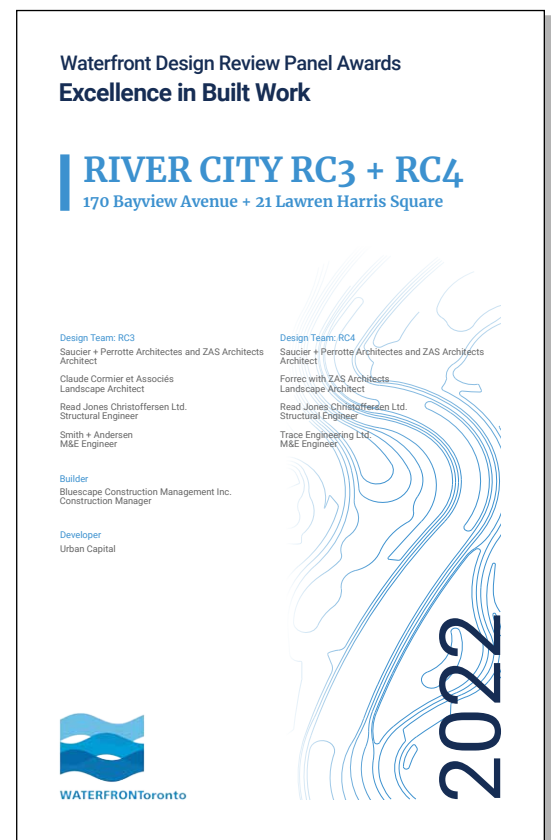
## Award Categories and Project Eligibility

To be eligible for the 2022 awards, a project must have completed the design review process and/or completed construction between 2019 – 2021. One additional award, called the Hall of Fame, will recognize projects that have been built for at least 3 years and have made a lasting contribution to the waterfront. The awards are given out in the following categories:

*Excellence in Residential Design*  
*Excellence in Commercial/ Institutional Design*  
*Excellence in Public Landscape Design*  
*Excellence in Planning/ Urban Design*  
*Excellence in Design Innovation*  
*Excellence in Built Work*  
*Hall of Fame*

## Process and Timeline

The Waterfront Design Review Panel (WDRP) Awards is unique in that there is no application process, the selection process relies exclusively on the presentations made for the WDRP meetings, or site visits to the built work. In February 2022, Waterfront Toronto drafted a shortlist of nominees from a list of eligible projects that have completed the design review process or completed construction between 2019 – 2021, and presented to the Panel for discussion and confirmation. In April 2022, the Panel confirmed the shortlist of up to a maximum of five nominees. In July 2022, the Panel voted to select the winners and provided jury comments on each winning project.



2022 WDRP Award Plaque



## Award Ceremony

The Award Ceremony was held in October at Waterfront Toronto's office. Representatives from nominated proponent teams, WDRP members, and Waterfront Toronto staff attended the ceremony. Paul Bedford, WDRP Chair, began by reading the Land Acknowledgement, and noted that the Toronto waterfront is better due to the hard work and great design projects. Mr. Bedford introduced George Zegarac, CEO of Waterfront Toronto, to continue the introduction.



2022 WDRP Awards

Mr. Zegarac thanked the Panel for contributing to the waterfront over the years, and noted that Waterfront Toronto's mandate sets a high bar for design excellence and it is time to recognize the great work. The value added by improvements made to the projects benefit the entire waterfront.

Chris Glaisek, Chief Planning and Design Officer, noted the awards recognize work both at the design stage and completed projects. The WDRP is a robust process to ensure the waterfront is world-class. Waterfront Toronto would like to recognize proponents who have completed and embraced the process, delivering design excellence.

Paul Bedford and Betsy Williamson, WDRP Vice-Chair, co-presented the nominees and winners. Finally, the ceremony concluded with a social session where proponent teams, WDRP Panel members, and Waterfront Toronto staff, were able to meet and discuss on the winning projects.



George Zegarac, CEO, Waterfront Toronto



Paul Bedford, Chair, Waterfront Design Review Panel

# Nominees and Winners

## Excellence in Residential Design

For a market condominium, rental or affordable housing building. Project must have completed the design review process between 2019 – 2021.

### Nominees:



Aqualuna



West Don Lands Blocks 3/4/7



Canary Landing (West Don Lands Blocks 20)



Canary Landing (West Don Lands Blocks 8)

### Winner:

#### Canary Landing (125 Mill Street)

#### Design Team led by:

Cobe, Design Architect  
architectsAlliance, Architect of Record  
CCxA (formerly Claude Cormier + Associates), landscape architect  
Thornton Tomasetti Canada Inc., Structural Engineer

#### Client/ Developer:

Dream  
Kilmer Group  
Tricon Residential

### Jury Comment:

Canary Landing's design, particularly the use of refined cladding and contrasting treatment of the lower and upper floors, successfully references the heritage aspects of the precinct in a contemporary way. The gently curving precast cladding on the upper volumes echoes the grain silos that once dotted the waterfront, and the detailed brick work on the lower volumes and in the public realm tie the site into the historic Distillery District across the street. Canary Landing is a remarkable and sophisticated project that raises the bar for residential design.



## Excellence in Commercial/ Institutional Design

For a non-residential use building, such as commercial, institutional, or infrastructural. Project must have completed the design review process between 2019 – 2021.

### Nominees:



### Winner:

#### T3 Bayside Phase 1 (251 Queens Quay East)

##### Design Team led by:

3XN, Lead Design Architect

WZMH, Executive Architect

Janet Rosenberg & Studio, Landscape Architect

Magnusson Klemencic, Structural Engineer

##### Client/ Developer:

Hines

### Jury Comment:

T3 Bayside design represents an exceptionally ambitious and provocative commercial building. The project's use of mass timber is elegantly supported by its simple massing, punctuated by a string of double-height social spaces skillfully woven through the office floors. The innovation in mass timber is much needed as we grapple with the economic and environmental impacts of traditional construction methods. This building is a seminal project for the Toronto waterfront that sets a clear pathway for future high-quality commercial buildings in Canada.

## Excellence in Public Landscape Design

For a park, streetscape, or other public open space project. Project must have completed the design review process between 2019 – 2021.

### Nominees:



Easy Bayfront Boardwalk



Anishnawbe Health Toronto of the Indigenous Hub



Gardiner and Lakeshore Blvd. East Public Realm



York Street Park



Port Lands Flood Protection: River and Parks

### Winner:

## Port Lands Flood Protection: River and Parks

### Design Team led by:

Michael Van Valkenburgh Associates, Design Lead and Landscape Architect  
WSP Canada Group Limited, Civil Engineer

### Client/ Developer:

Waterfront Toronto

### Jury Comment:

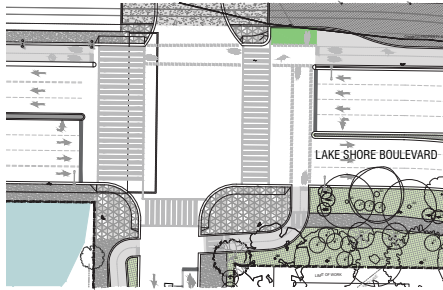
The new river and parks in the Port Lands Flood Protection (PLFP) project represents the realization of a fifty-year dream to reclaim the mouth of the Don River. The design sets a global precedent for the transformation of flood-prone, post-industrial waterfronts into climate resilient, ecologically rich, and socially inclusive urban districts. The design of the new river channel successfully references the dynamic and complex estuary systems found on the Great Lakes, and the design of the parks skillfully integrates a diverse recreational program with a forested buffer to create what will be one of the most significant new park systems in Toronto's history.



### Excellence in Planning / Urban Design

For a precinct plan, master plan, public open space plan, or development plan. Project must have completed the design review process between 2019 – 2021.

#### Nominees:



Gardiner and Lakeshore Blvd. East Public Realm



#### Winner:

### Gardiner and Lakeshore Blvd. East Public Realm

#### Design Team led by:

West 8, Landscape Architect & Urban Designer  
Dillon Consulting, Consulting Team Project Manager

#### Client/ Developer:

Waterfront Toronto

#### Jury Comment:

The design of the Lakeshore Boulevard public realm sets a new precedent for human-scale, pedestrian-friendly infrastructure. By creating a network of green linkages along the corridor, a vibrant public realm will emerge in a formerly desolate area. This project exemplifies how novel forms of public open space can be developed out of idiosyncratic, residual, and contested spaces. The design successfully blurs park and infrastructure, a truly innovative and critical initiative that will facilitate re-calibrating the relationship that citizens of the city have to this area.

## Excellence in Design Innovation

For a project that addresses environmental, social, or other contemporary issues through design and research. Project must have completed the design review process between 2019 – 2021.

### Nominees:



### Winner:

#### Limberlost Place (185 Queens Quay East)

##### Design Team led by:

Moriyama & Teshima Architects + Acton Ostry Architects, Architect  
Studio TLA, Landscape Architect  
Fast + Epp, Structural Engineer

##### Client/ Developer:

George Brown College

### Jury Comment:

The design of Limberlost Place features innovation throughout. A combination of elements including solar chimneys, rooftop photo-voltaic panels, a de-centralized mechanical system, vented hallways, and operable windows allows the building to have net zero carbon emissions. The “passive ventilation mode” allows the building to operate passively 50 per cent of the year. The team is also to be commended for their willingness to leverage the project for market transformation, pushing policy and sharing lessons learned to build industry capacity. This project will be an exemplar for all institutional projects.



## Excellence in Built Work

For a completed building, landscape, infrastructure, or neighborhood that delivers on the original design intent. Project must have been constructed between 2019 – 2021.

### Nominees:



Aquabella



River City Buildings RC3 + RC4



Tommy Thompson Park Pavilion



Ten York



Stormwater Management Facility

### Winner:

#### Stormwater Management Facility

##### Design Team led by:

Gh3\*, Architect

RV Anderson, Prime Engineer

##### Builder:

Graham Construction, Construction Manager

##### Client/ Developer:

Waterfront Toronto

### Jury Comment:

The design of the Stormwater Management Facility celebrates the legacy of exceptional municipal architecture like the R.C. Harris Water Treatment Plant. It is an elegant, beautifully detailed sculptural work, that will engage and delight the public and prove that beautifully designed infrastructure buildings are an essential aspect of city building. The Stormwater Management Facility is a true model of multi-beneficial infrastructure, and the waterfront will be a more delightful place with city infrastructure treated with this level of design and craft.

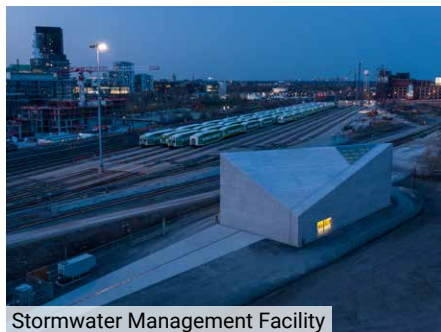
## Excellence in Built Work

For a completed building, landscape, infrastructure, or neighborhood that delivers on the original design intent. Project must have been constructed between 2019 – 2021.

### Nominees:



Aquabella



Stormwater Management Facility



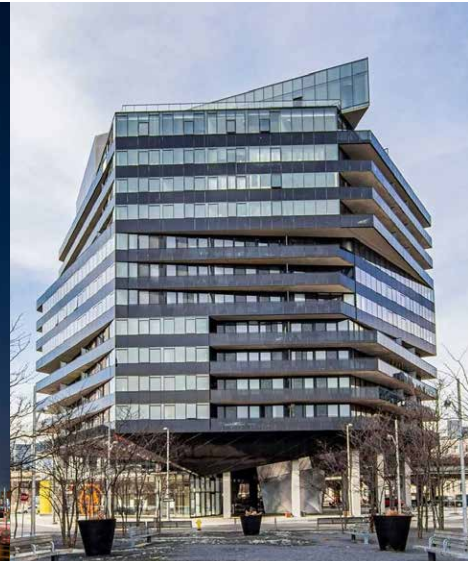
Tommy Thompson Park Pavilion



Ten York



River City Buildings RC3 + RC4



### Winner:

## River City Buildings RC3 + RC4

### Design Team led by:

For RC3:

Saucier + Perrotte Architectes and ZAS Architects, Architect  
CCxA (formerly Claude Cormier + Associates), landscape architect  
Read Jones Christofferson, Structural Engineer

For RC4:

Saucier + Perrotte Architectes and ZAS Architects, Architect  
Forrec with ZAS Architects, Landscape Architect  
Read Jones Christofferson, Structural Engineer

### Builder:

Bluescape Construction Management Inc. Construction Manager

### Client/ Developer:

Urban Capital

### Jury Comment:

The completed River City Phases 3+4 represent a sophisticated, well-detailed, and elegantly proportioned set of residential towers. The unique aesthetic contribution to the urban fabric of West Don Lands has been transformative, setting a new bar for the design and execution of multi-residential buildings. The exterior demonstrates a high degree of resolution in material selection and detailing, successfully delivering an ambitious design that elevates the relationship between the project and users. River City Phases 3+4 is a triumphant completion of a brilliant ensemble of residential buildings.

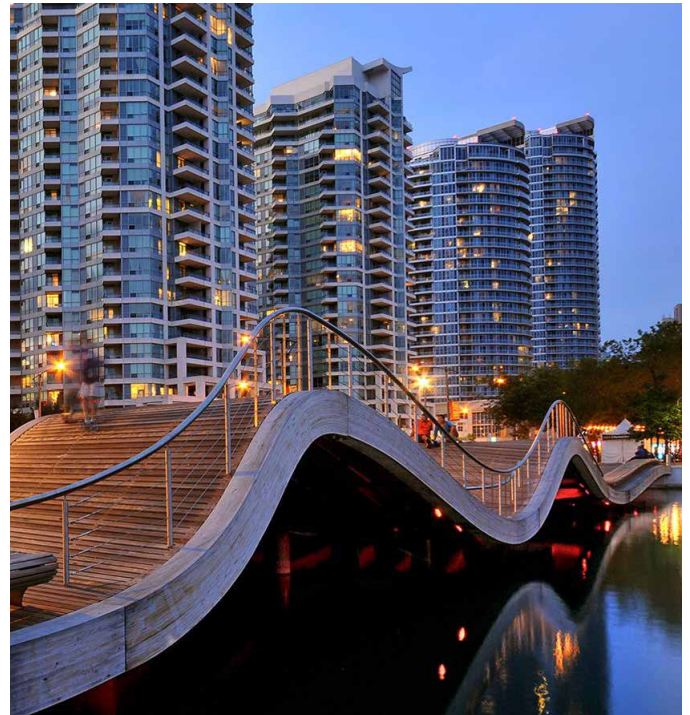


## Hall of Fame

For a completed building, landscape, infrastructure, neighborhood, or master plan whose contributions to the waterfront have been significant, catalytic, and enduring. Project must have been built for at least 5 years.

### Winner:

**WaveDecks (Spadina, Rees, and Simcoe), completed 2007-2009**



### Design Team led by:

West 8 + DTAH in joint venture, Landscape Architects  
Halsall Associates, Structural Engineer

### Builder:

Somerville Construction

### Client/ Developer:

Waterfront Toronto

### Jury Comment:

When they first opened, the WaveDecks captured the world's attention and imagination, becoming part of the iconic landscape of the nascent revitalization project led by Waterfront Toronto. The creative use of form and materiality, along with the emphasis on connecting people to the Lake, established a unique design language for the water's edge. The Simcoe WaveDeck, with its deeply undulating curves, has become a "must see" destination on the waterfront, and the triptych provide a truly unique palette that calls for extension to the remaining slips. The WaveDecks are bold, inspirational designs that represent a legacy for Toronto.

### Hall of Fame

For a completed building, landscape, infrastructure, neighborhood, or master plan whose contributions to the waterfront have been significant, catalytic, and enduring. Project must have been built for at least 5 years.

#### Winner:

**Canada's Sugar Beach (25 Dockside Drive), completed 2010**



#### Design Team led by:

CCxA (formerly Claude Cormier + Associates), landscape architect  
The Planning Partnership, Associate Firm in Landscape Architect  
The Municipal Infrastructure Group, Site Civil Engineering

#### Builder:

Easter Construction Company, Project Manager  
Aldershot landscape Company, Landscape Contractor

#### Client/ Developer:

Waterfront Toronto

#### Jury Comment:

Canada's Sugar Beach is a special, transformative project that is well used year-round. The iconic and playful pink umbrellas, willows, pines, and white sand juxtaposed with massive cargo ships offloading at the Redpath Sugar Plant create moments that are unique to our waterfront and undoubtedly, Toronto. The park's weaving together of thoughtful public space principals and sophisticated branding landed it in the eye and heart of visitors, designers, and civic leaders alike, remains as one of the most fun public spaces in Canada. The creativity and imagination displayed by the project and design team is highly commended.

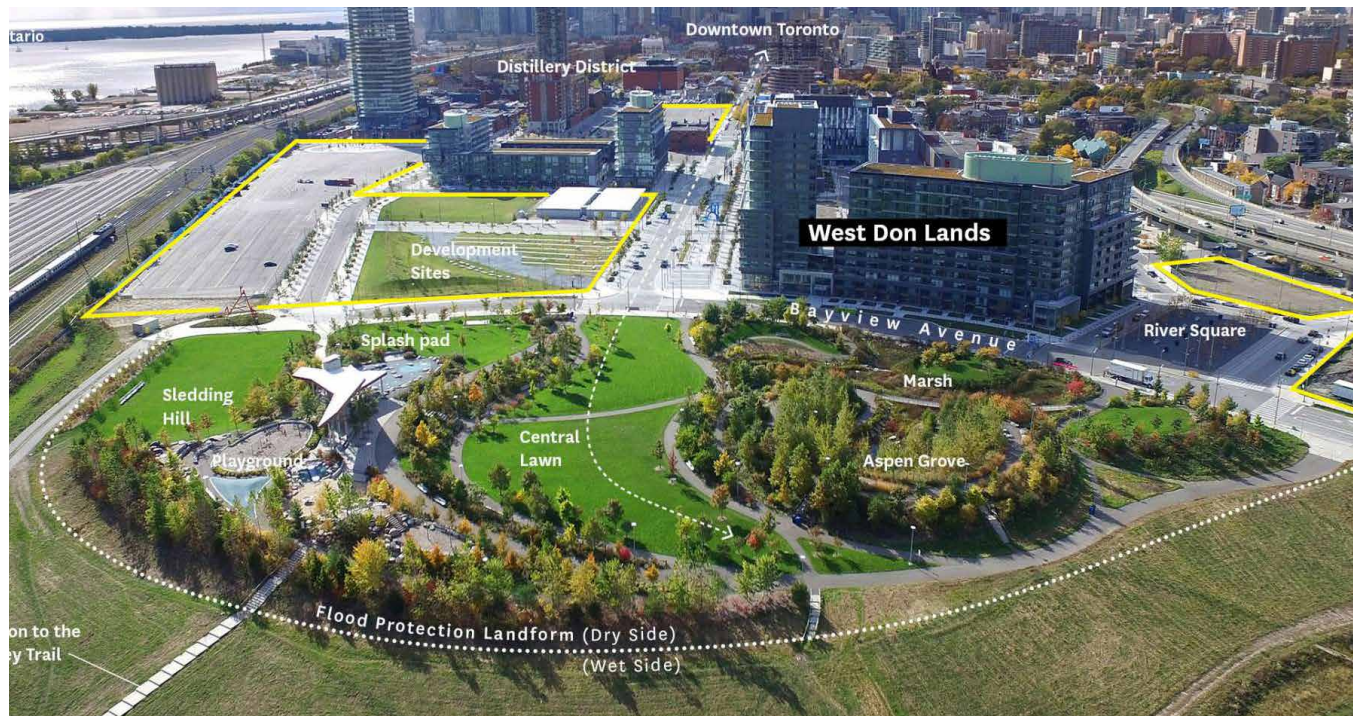


## Hall of Fame

For a completed building, landscape, infrastructure, neighborhood, or master plan whose contributions to the waterfront have been significant, catalytic, and enduring. Project must have been built for at least 5 years.

### Winner:

**Corktown Common (155 Bayview Ave.), completed 2014**



### Design Team led by:

Michael Van Valkenburgh Associates, Design Lead and Landscape Architect  
 Maryann Thompson Architects, Architect  
 Arup, Prime Engineer

### Builder:

Eastern Construction Company, Construction Manager  
 Aldershot landscape Company, Landscape Contractor

### Client/ Developer:

Waterfront Toronto

### Jury Comment:

Corktown Common was designed to couple critical flood protection infrastructure with social and civic programming. In doing, so it helped regenerate the ecological and environmental health of the area, enabling the construction of the Canary District and a new park, rich in experience and amenity. It demonstrates that parks can offer a range of activities for multi-generational enjoyment, and whose hard urban boundaries are eased by an expertly designed landscape edge. This project helped launched the redeveloped of the West Don Lands, and is now the public heart of the entire precinct.



# Panel Membership

Panel Member	Profession	Accreditation	Organization	Terms Served	Year Started
<b>Current</b>					
Paul Bedford (Chair)	Planning/ Urban Design	RPP, FCIP, Hon. OALA	Urban Mentor and Former Chief Planner, City of Toronto	8	2005
George Baird	Architecture	OAA, FRAIC, AIA	Member of the Order of Canada; Partner, Baird Sampson Neuert Architects Inc.	8	2005
Brigitte Shim	Architecture	OAA, FRAIC, AIA	Member of the Order of Canada, Partner, Shim-Sutcliffe Architects	6	2009
Betsy Williamson (Vice Chair)	Architecture	OAA, FRAIC	Partner, Williamson Williamson	6	2009
Peter Busby	Architecture	MAIBC, FRAIC	Member of Order of Canada; Managing Director, Perkins + Will	5	2011
Pat Hanson	Architecture	OAA, AAA, FRAIC	Founding Partner, gh3	5	2012
Nina-Marie Lister	Planning/ Urban Design	RPP, MCIP, Hon. ASLA	Professor, School of Urban + Regional Planning Director, Ecological Design Lab Toronto Metropolitan University	2	2017
Eric Turcotte	Planning/ Urban Design	RPP, OAA, OAQ, MRAIC, MCIP	Partner, Urban Strategies	2	2017
Janna Levitt	Architecture	OAA, FRAIC	Partner, LGA Architectural Partners	2	2017
Jeff Ranson	Sustainability Strategist	-	Senior Director, Energy, Environment, & Advocacy, BOMA	2	2017
Fadi Masoud	Landscape Architecture	ASLA, OALA / CSLA (Affiliate)	Assistant Professor, University of Toronto; Director, Centre for Landscape Research	2	2018
Kevin Steltzer	Engineering/ Building Science	BSSO, OAA, RAIC	Founding Partner, ENFORM Architects Inc.	1	2020
Matthew Hickey	Architecture	OAA, MRAIC	Partner, Two Row Architect	1	2021
<b>Retired</b>					
Claude Cormier	Landscape Architecture	MAAPQ, FCSLA	Membres de l'Ordre National du Québec, Principal, Claude Cormier + Associés	6	2010

## New Members

During the period of 2019 - 2021, two new members were appointed to the Panel and one member concluded their terms.

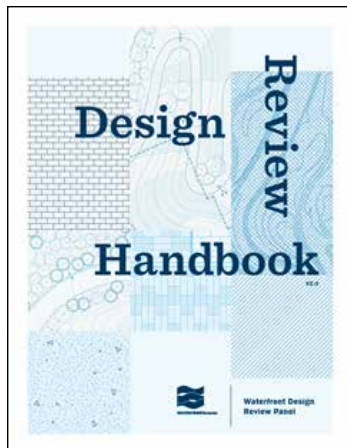
**Kevin Stelzer**, BES, Barch, OAA, MRAIC, LEED AP BD+C, BSSO, CPHD, was appointed in Jan. 2020 as a new Building Science Panel member. Kevin is the Founding Principal of Enform Architects and brings extensive experience in sustainable design and high-performance building projects. He is a professional licensed architect, Certified Passive House Designer, Building Science Specialist of Ontario, LEED accredited, and currently serves on the CaGBC (Canada Green Building Council) Embodied Carbon Working Group.



**Matthew Hickey**, OAA, MRAIC, B.Des., B. Ed., M.Arch., LEED A.P., was appointed in December 2020 as an Architect Panel member. Matthew is a architect with 15 years of Indigenous design expertise and teaching experience at OCAD, was also appointed in 2020 to join the DRP as a new Panel member. Matthew is a Partner at Two Row Architect and a Director on the Board of Artscape Toronto, bringing extensive design expertise, knowledge, and the integration of Indigenous history and culture into design. Co-leading the architectural design for West Don Lands Block 10 Indigenous Hub, Matthew is familiar with the waterfront context and the mandate of the Panel having presented multiple times as a designer.

# Administration

## Release of WDRP Handbook v2



The WDRP Handbook outlines processes and requirements of attending the WDRP, from the first step of getting onto the agenda, to preparing a presentation. With the adoption of the new WDRP Handbook in 2019, Waterfront Toronto began to work on a graphic version for the document. WDRP Handbook v2 was released in August 2021, with updates on improving graphic clarity on all aspects of the WDRP process and streamlined many areas of review logistics to improve the review process and proponent experience. The Handbook will be updated every two years to reflect the most current practices and requirements of the WDRP.



## Updates to the Waterfront Design Review Panel By-laws

In 2019, the WDRP By-laws received a substantial update. With the latest updates for the WDRP Handbook, the latest version of the By-laws is revised to exclusively focus on the governance of the Panel - information on geographic jurisdiction, project types, and meeting logistics are removed from the By-laws since they are included in the Handbook. The By-laws no longer include provisions on communication and media relations, and conflict of interest procedures. Instead, they refer to the Waterfront Toronto Code of Conduct. Clarifications on Panel member composition and quorum requirements have been further detailed in this update.



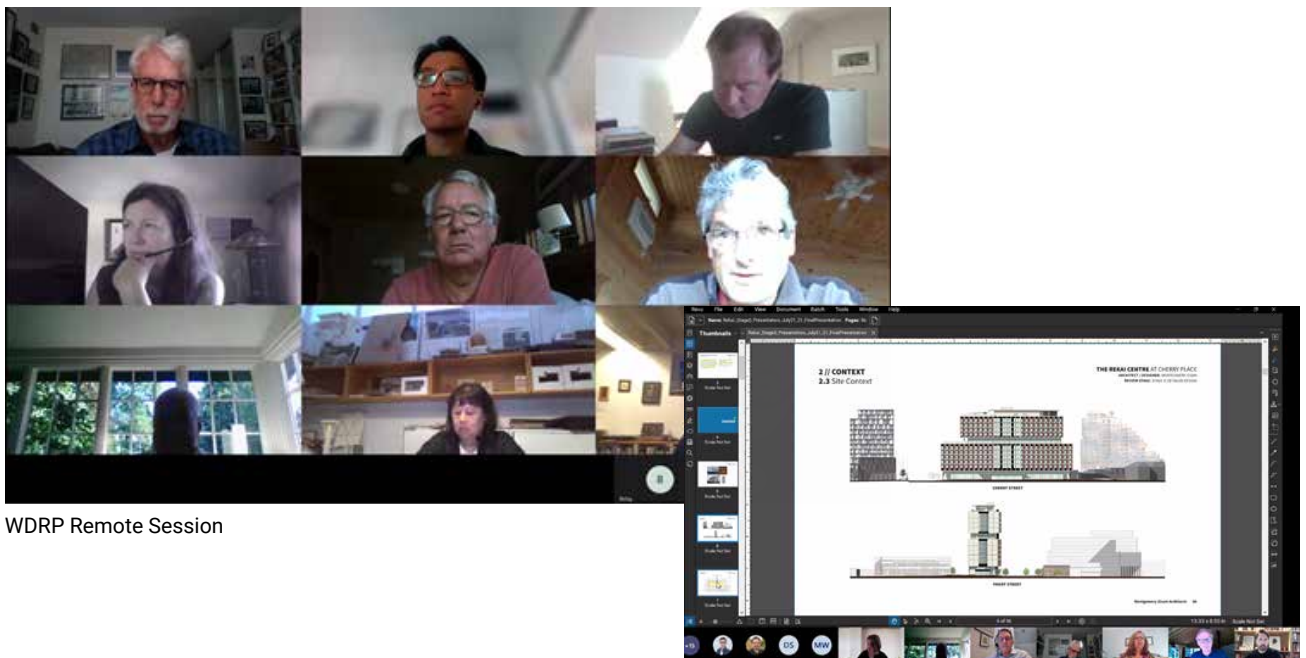
## Compliance with Waterfront Toronto Code of Conduct

The Waterfront Toronto Code of Conduct is a set of principles, guidelines, and rules that Panel Members must use to guide their conduct and decision making in fulfilling the Panel's mandate. Beginning in 2019, all Panel members completed a declaration to comply with the Code of Conduct. The Code of Conduct is based on the principles, values, and ethical standards to which Waterfront Toronto and its board of directors are held. It is substantially similar to the code of conduct that is applicable to the board of directors, with modifications that are necessary to make it applicable to the WDRP. The Code of Conduct also provides provisions on communication and media relations for Panel members, as well as conflicts of interest and procedures for resolution.

## Adapting to COVID-19: From In-person to Remote Virtual Meetings

Subject to public health directions, the WDRP continued to operate, switching from in-person meetings with public attendance to a virtual meeting. 19 virtual DRP meetings have been held.

As a result of the transition to virtual meetings, key procedures related to the WDRP also had to adapt. Proponent teams presented virtually, and review materials, previously circulated in print form, were circulated digitally. This transition conserves paper and resources and has remained in place. To ensure the virtual WDRP meetings are still accessible to the public, Waterfront Toronto implemented the recording of all public sessions and publication of the footage on the Waterfront Toronto YouTube channel. Waterfront Toronto published over 70 hours of virtual WDRP footage.



WDRP Remote Session

### Return to In-person, hybrid meetings

After a period of virtual meetings, the Panel returned to in-person meetings at the Waterfront Toronto office in March 2022. The meeting area was reconfigured to allow socially distant seating, and the audio/ visual infrastructure was set up to continue to provide hybrid meeting capability for proponents, Panel members, and staff, who joined the meetings remotely. The recording and publication of Panel meetings has continued, and Waterfront Toronto uploads monthly footage on its YouTube channel for public viewing.

### On-going Panel Education

In 2020, Waterfront Toronto participated in the two-part Indigenous Cultural Safety Training provided by the Provincial Health Services Authority. The San'yas: Indigenous Cultural Safety Training is a unique program to enhance self-awareness and strengthen the skills of those who work both directly and indirectly with Indigenous people, the goal is the develop understanding and promote positive partnerships between service providers. Waterfront Toronto made the training available and mandatory for all members. All WDRP members completed the two-part training by April 2022.

Additionally, Panel members are exposed to other “For Information” seminars held by City of Toronto staff that provide updates on urban design and planning policies. Sessions included Toronto Green Standards Updatesm by Lisa King, Senior Policy Planner with City of Toronto, and Indigenous Place-Makingm by Jennifer Franks with Indigenous Affairs Office City of Toronto.



# Appendix: List of Proponents

---

## Developers

162 Queens Quay GP Inc.  
3C Lakeshore Inc.  
Anishnawbe Health Toronto  
Dream Kilmer Tricon  
City of Toronto  
Dream, Kilmer, Tricon  
Enbridge  
Equinix  
George Brown College  
Hines / Tridel  
Menkes  
Metrolinx  
Oxford  
Pacific Reach Properties Development  
Pinnacle International  
Ports Toronto and Upper Canada College  
CreateTO and QuadReal  
Rekai Centres  
Rom-Grand Waterfront Ltd.  
Sidewalk Labs  
Studio City  
TTC  
Waterfront Toronto

## Architects

3XN  
Acton Ostry Architects  
Adamson Associates  
architectsAlliance  
B+H Architects  
Beyer Blinder Belle  
Brook McIlroy  
COBE  
ERA Architects  
gh3\*  
Grimshaw  
Hariri Pontarini Architects  
Henning Larsen Architects  
Kearns Mancini Architects  
Kirkor Architects  
Montgomery Sisam Architects  
Moriyama & Teshima Architects  
Quadrangle  
RAW Design  
Rogers Stirk Harbour + Partners

Two Row Architect  
VJAA  
WalterFedy Architect  
WZMH

### **Landscape Architects**

Alexander Budrevics + Associates  
Claude Cormier et Associés  
DTAH  
Forrec  
Gillespies  
IBI  
Janet Rosenberg & Studio  
Michael Van Valkenburgh Associates  
NAK Design Group  
NAK Design Strategies  
Phyto Studio  
PMA Architects  
Public Work  
Stantec, NAK Design Group  
Studio TLA  
Terraplan Landscape Architects  
West 8  
wHY + Brook McIlroy

### **Planning Consultants**

Armstrong Planning & Project Management  
R.E. Millward + Associates  
SvN Architects and Planners  
Urban Strategies  
Greenberg Consultants  
WND Planning

### **Engineering Proponents**

Arup  
Dillon Consulting  
EQ Building Performance  
Fast + Epp  
Footprint  
Integral Group  
Magnusson Klemencic  
Purpose Building  
RWDI  
Stantec  
Transsolar Kilma Engineering  
WSP