



# Destination Playground Pavilion + Dining Terrace

## Schematic Design

November 30, 2022



# Site Context – Full Buildout





# Project Background

Through the development of the design of the parks at the Port Lands Flood Protection project it was identified that a facilities building including washrooms in Promontory Park South was desirable.

The Pavilion and adjacent Dining Terrace are situated within Promontory Park South, which will be delivered as part of the larger Port Lands Flood Protection project.

The Destination Playground Pavilion and Dining Terrace are currently unfunded and anticipated to be delivered through philanthropic funding.

Programming for the pavilion was identified through workshops with Parks, Forestry and Recreation (PFR) staff in order to respond to park user needs along with PFR staff needs. The pavilion programming will include washrooms, food concessions, and flexible areas for PFR camps. The Dining Terrace is an extension of the pavilion and will allow for year-round activation.

# Anticipated Project Timeline

Destination Playground Pavilion + Dining Terrace

Review Stage: Schematic Design

Proponent: Waterfront Toronto

Design Team: MVVA and LGA

**Schematic Design (30%):** January 2021- March 2023

**Design Development (60%):** April 2023 - October 2023

**Construction Documentation (100%):** November 2023 – June 2024

**Bidding and Negotiations:** July 2024 – September 2024

**Construction** –October 2024 – October 2026

**Fall 2026 Playground Opening**

# Team Structure

## Destination Playground Pavilion + Dining Terrace

Review Stage: Schematic Design

Proponent: Waterfront Toronto

Design Team: MVVA and LGA

Pavilion Architect



- Architectural professional services for the Pavilion located in Promontory Park South

LGA

Landscape Lead Designer



- Landscape and Play Design
- O+M Strategy
- Support WT fundraising initiative

MVVA



# Project Approval Stage

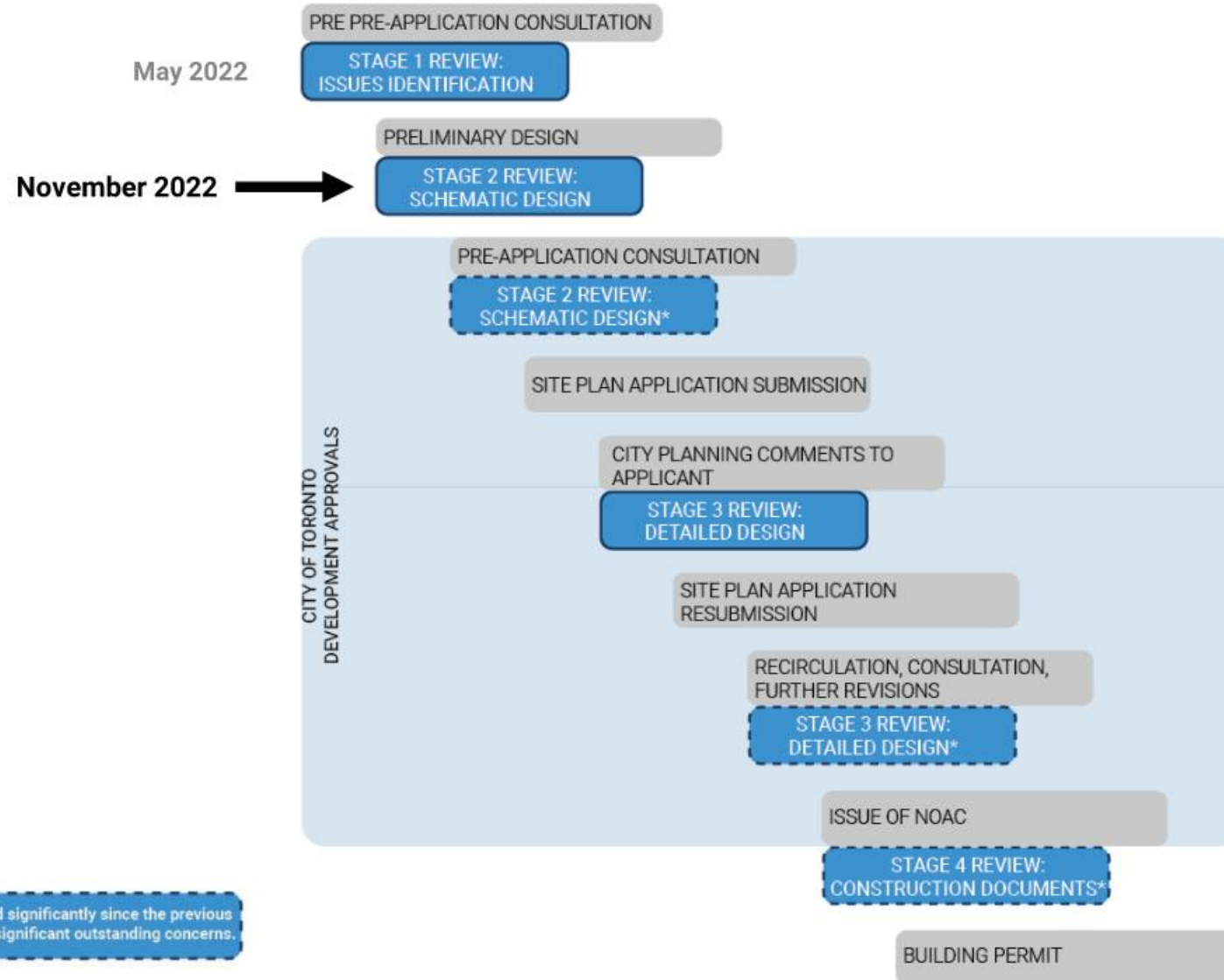
## DRP Stream 2: Public land – Site Plan Application

### Destination Playground Pavilion + Dining Terrace

Review Stage: Schematic Design

Proponent: Waterfront Toronto

Design Team: MVVA and LGA





# Consensus Comments

## May 2022 Issues Identification

### General

- General support on the program and direction of the pavilion design.
- Final buildout of Villiers Island will be a very popular destination with both local and outside visitors, it is important to:
  - learn from other popular park attractions, i.e. High Park, Ontario Place, to ensure the pavilion is appropriately sized to accommodate peak summer demand and winter use.
  - consider the design of the pavilion and Winter Garden from multiple scales and perspectives.
- Consider strategies in crowd control for the pavilion and adjacent open space, especially during popular summer and winter events.
- Provide more information on the intermediate context.
- It is important to continue meaningful consultation with local Indigenous groups.

### Pavilion

- Appreciated the concept of embedding the building in the landscape.
- Further develop a unique architectural identity for the building, consider highlighting and elaborating both timber and stone in the design expression, i.e. the roof, the retaining wall, and the façade.
- The canopy is a defining feature that makes seasonal uses viable, continue to develop the form to maximize shade, rain protection, and work with the Winter Garden area for flexible programming.
- Consider strategies of bringing in natural light through the roof.
- Consider the railing requirements on the roof early in the design process.
- Ensure back of house services for the building are appropriately designed to function well with park circulation.
- Provide more information on the year-round scalability of the restaurant, for both peak- and off-seasons.

# Consensus Comments

May 2022 WDRP for Issues Identification

Destination Playground Pavilion + Dining Terrace

Review Stage: Schematic Design

Proponent: Waterfront Toronto

Design Team: MVVA and LGA

## Winter Garden

- Reconsider the name “Winter Garden” to help clarify its function.
- Ensure the space is flexible and can accommodate seasonal functions to ensure year-round success.
- Consider including a fire pit.

## Sustainability

- Consider passive heating and cooling opportunities for the building and take advantage of the big roof and canopy, provide more information and details.
- Consider opportunities in the design that will highlight the ecological benefits of the park and the building.



# Areas for Panel Consideration

## Waterfront Toronto

Destination Playground Pavilion + Dining Terrace

Review Stage: Schematic Design

Proponent: Waterfront Toronto

Design Team: MVVA and LGA

- Does the revised building parti / massing respond to the site and programmatic requirements?
- Does the interior, including restaurant, PF&R room, washrooms, and back-of-house, strongly relate and support site and exterior uses?
- Are the pavilion and rooftop well integrated with the dining terrace to create a unified experience?

# Consensus Comments

Parks, Forestry & Recreation – City of Toronto

Destination Playground Pavilion + Dining Terrace

Review Stage: Schematic Design

Proponent: Waterfront Toronto

Design Team: MVVA and LGA

- TO BE INSERTED



# Design Aspirations

## Goals and Objectives:

The Destination Playground Pavilion will be the architectural corollary of this exemplary new park. With its simple form and expressive timber structure, this public building will provide amenity to all visitors. Embodying principles of regeneration and resilience, the Pavilion will be near Passive House, with All-Electric and Low Carbon systems to maximize energy conservation.

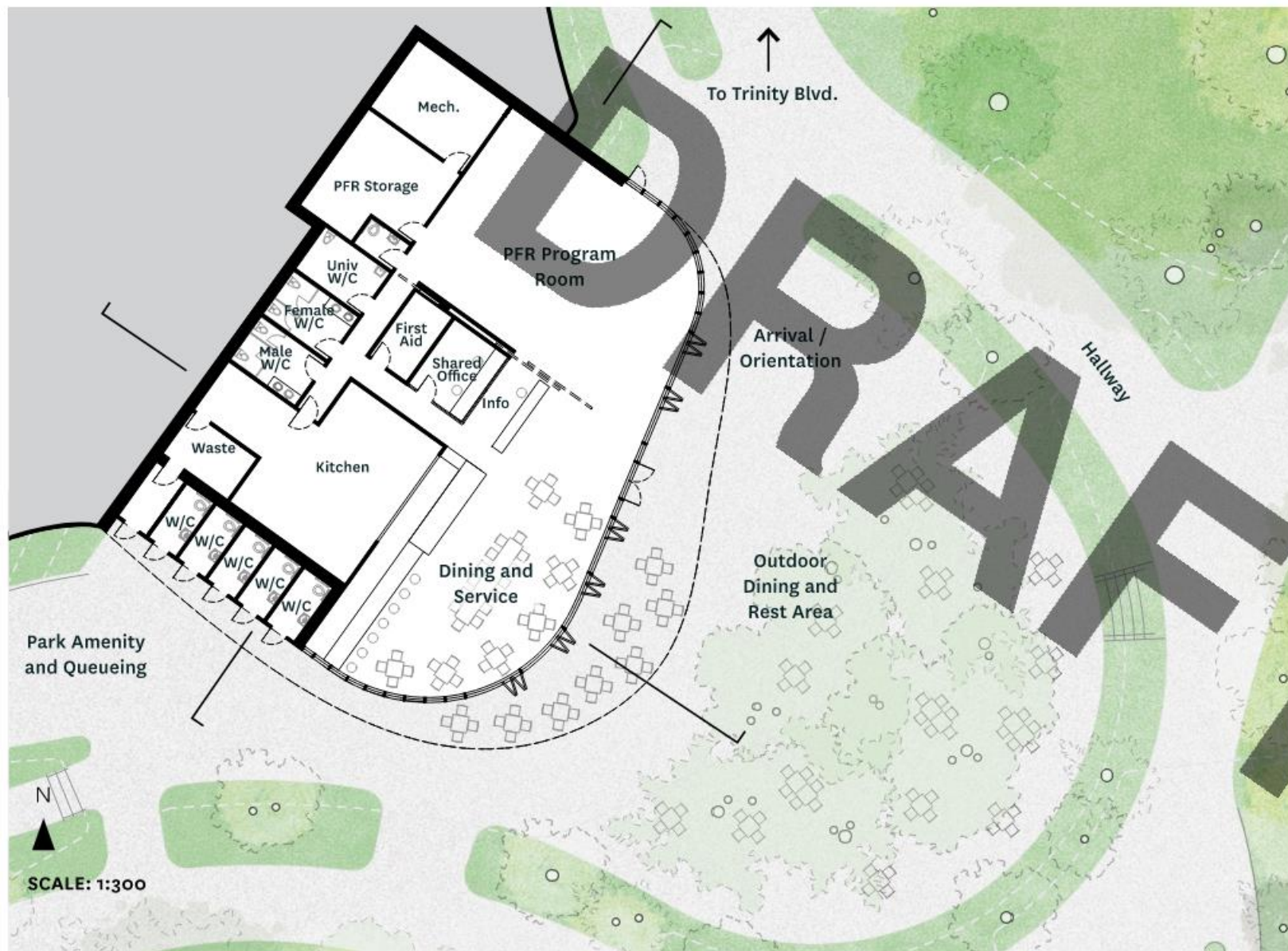


# Park Context





## Recap - Previous Floor Plan

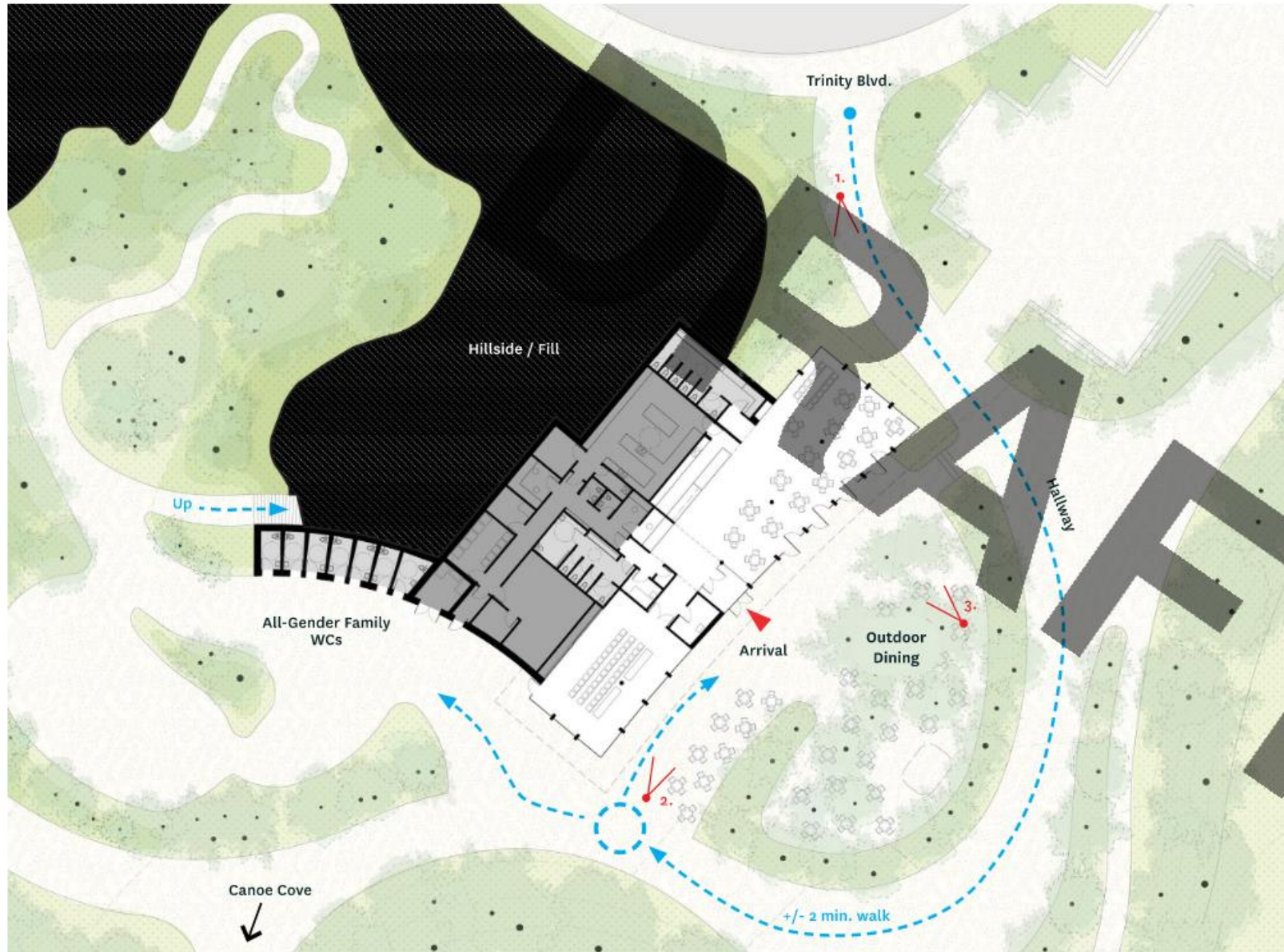


### DRP #1 Issues Identification Key Takeaways Recap

- Consider spaces of crowding within and around the building.
- Consider flexibility and form for year-round seasonal success.
- Consider servicing functionality, and public private thresholds.
- Continue building on relationship and embedment in landscape.
- Continue strengthening natural materials palette.



# Revised Site Plan



## LEGEND

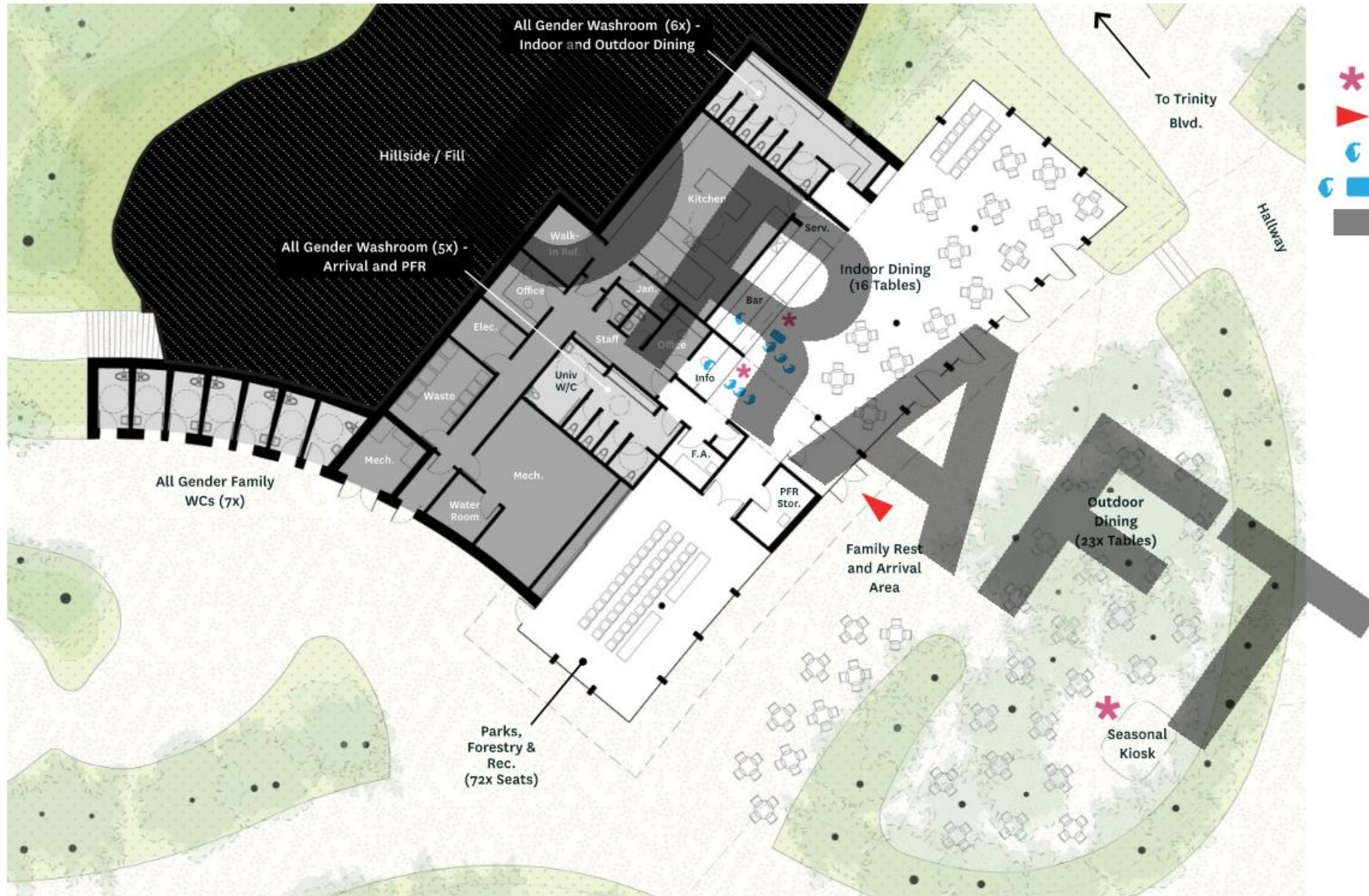
- ▶ Entry / Access
- Circulation
- Arr. / Decision Point
- Views
- Back-Of-House Space



SCALE: 1:500



# Revised - Ground Floor Plan



## LEGEND

- ✱ Point of Service / Info
- ▶ Entry / Access
- ⬇ Person
- ⬇ Person w. Stroller
- Back-Of-House Space

GFA - 751 sm

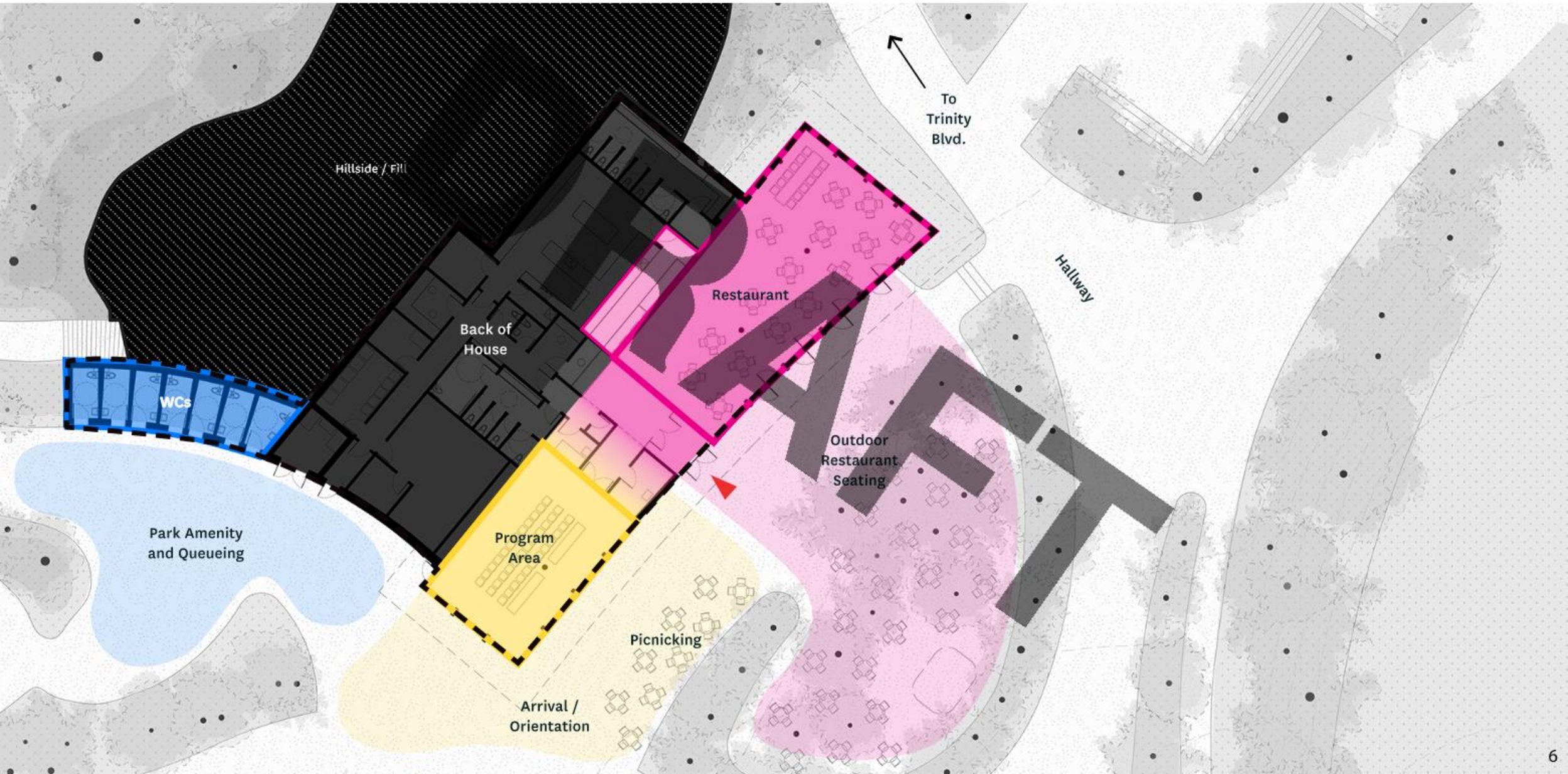
N



SCALE: 1:300



# Program Relationship Diagram





# Servicing Diagram



## LEGEND

-  Waste Management Route
-  Main Entry



# Roof Plan

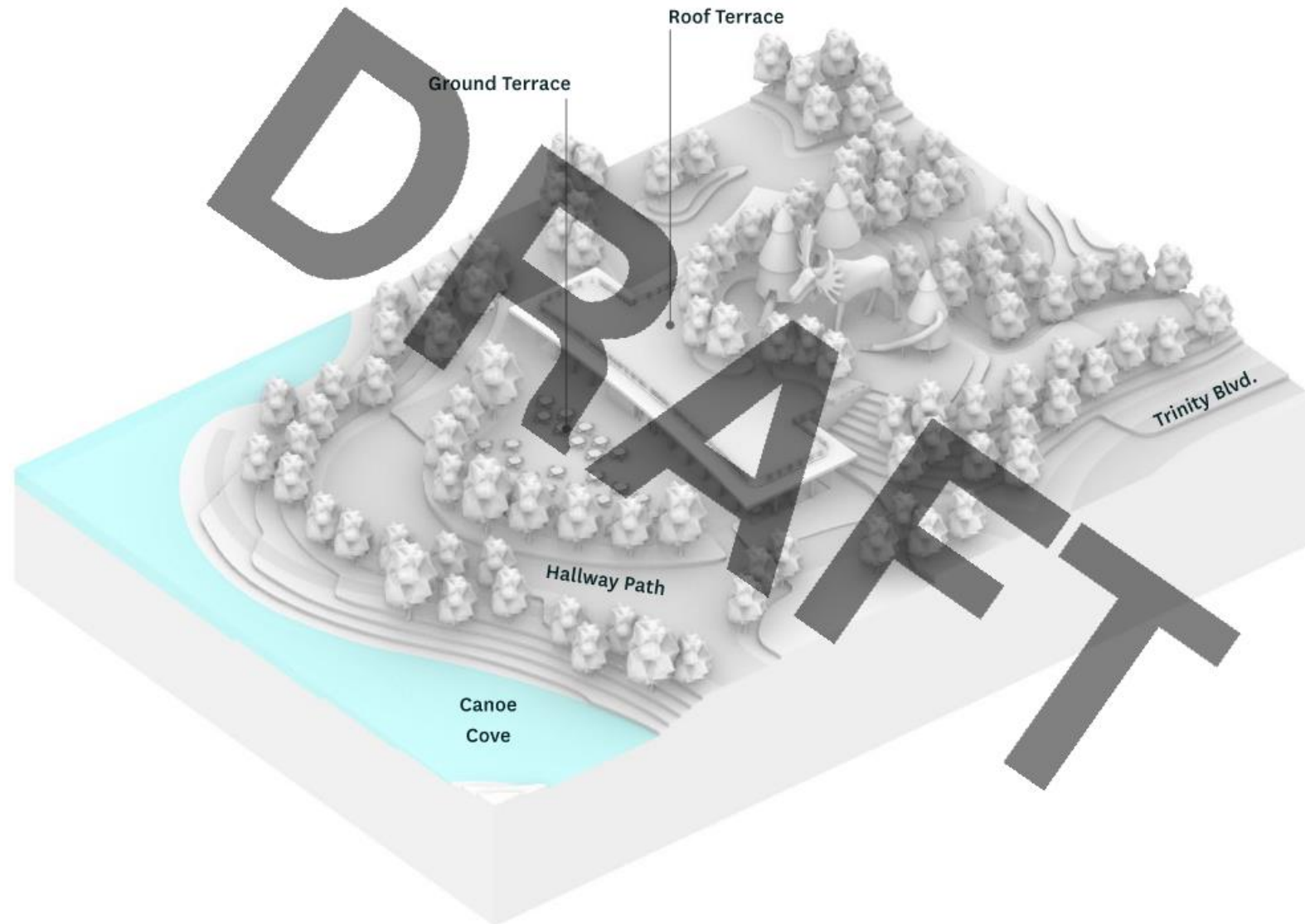




## View to Canoe Cove and Beyond

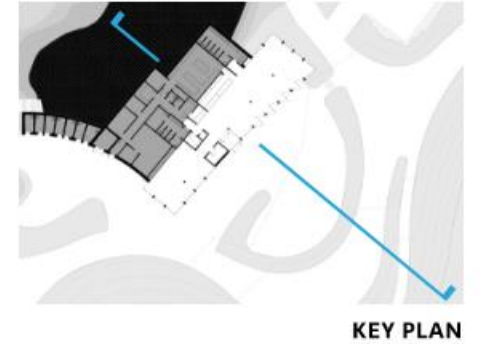
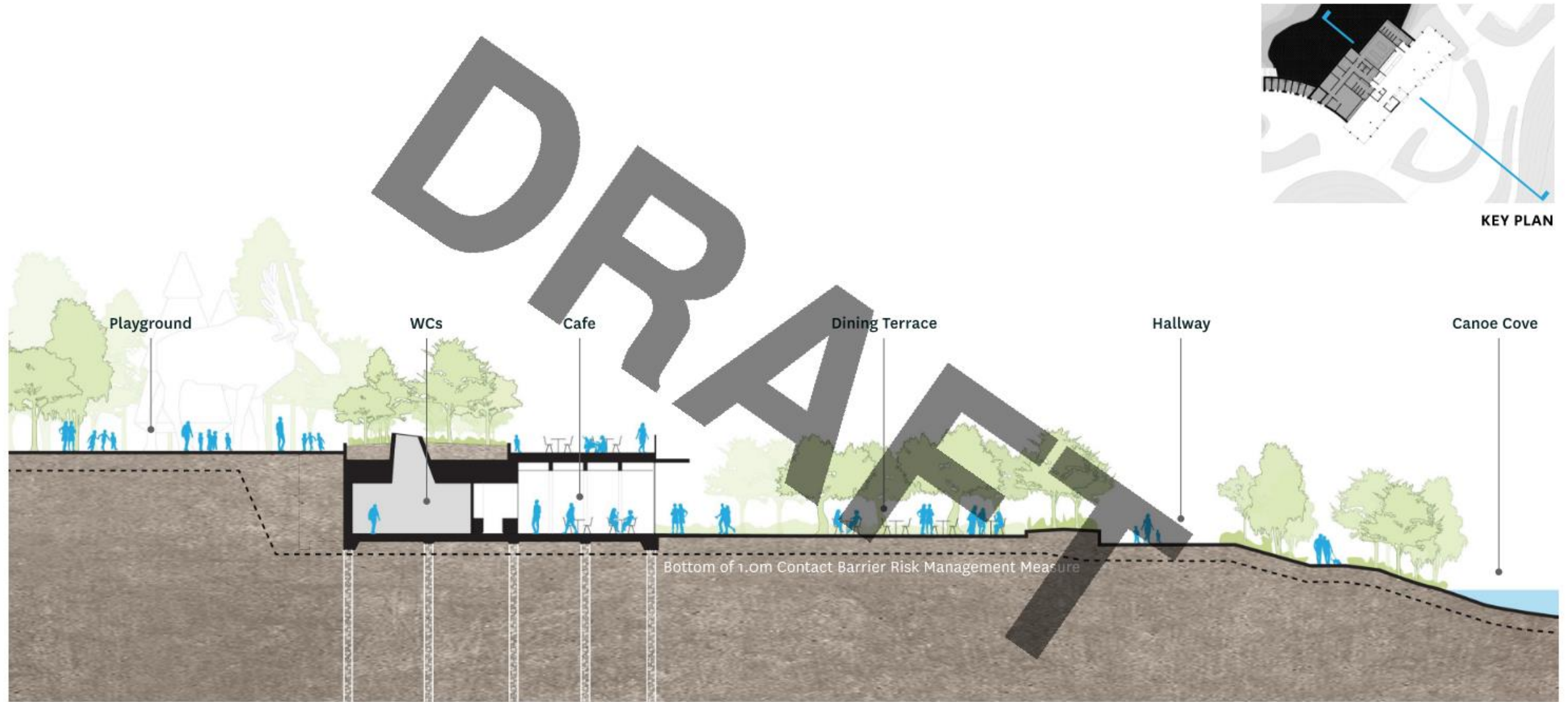


# Massing Diagram



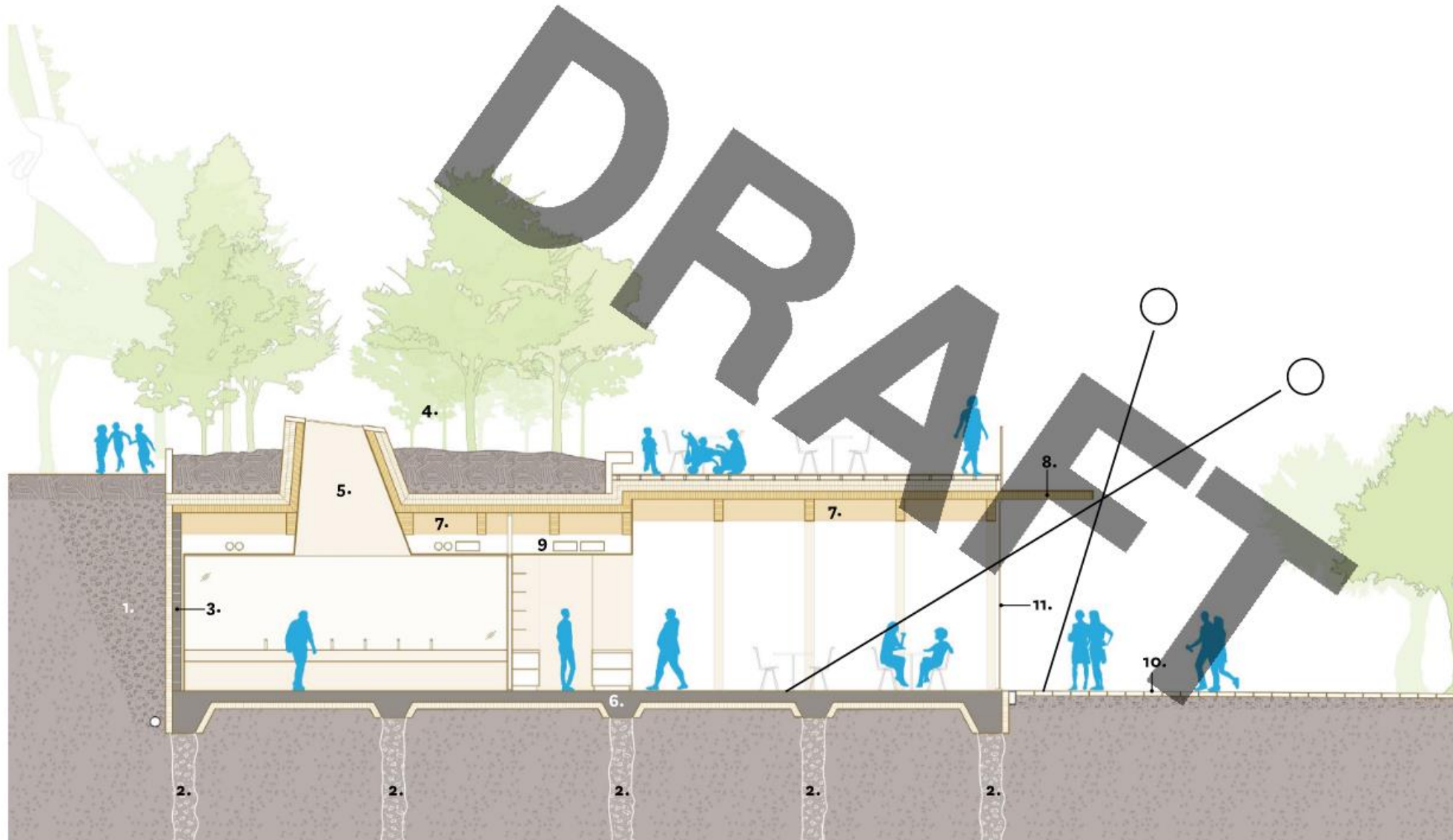


# East/West Site Section



SCALE: 1:300

# Sustainable Design Features



1. Lightweight Glass Aggregate
2. Granular Rammed Aggregate Pier
3. Low-Carbon Block
4. Planted Roof
5. Skylight
6. High SCM Concrete Slab
7. Heavy Timber Structure
8. Shade Canopy
9. All Electric M/E Systems
10. Permeable Paving
11. High Performance Glazing



# Sustainable Material Palette

Lightweight Glass  
Aggregate



Low Carbon Block



Low Carbon Insulation



Wood Canopy



Low Carbon Concrete



Natural Finishes



Rammed Aggregate



High Performance Glass

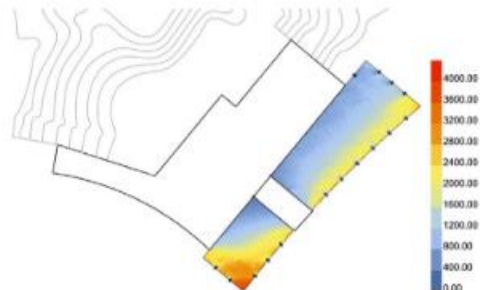
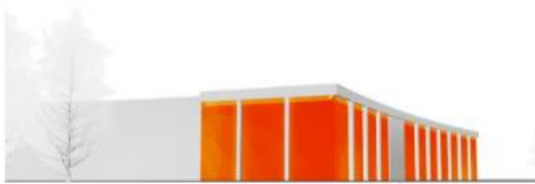


Timber Structure

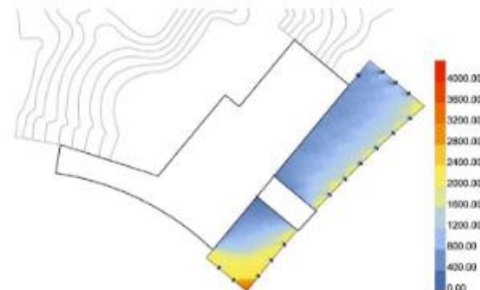
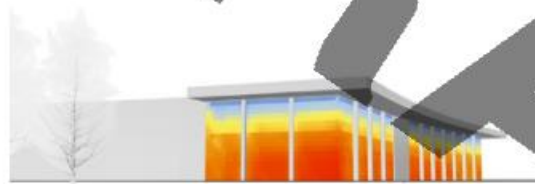


# In Progress: Canopy Form and Solar Performance

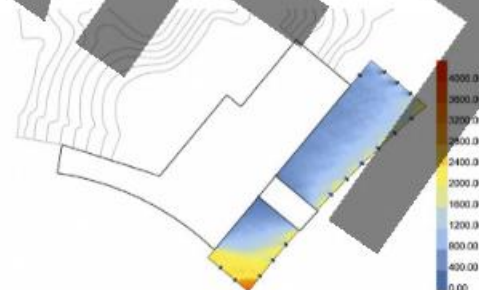
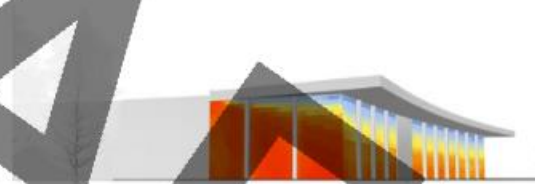
Scenario 1: No Canopy



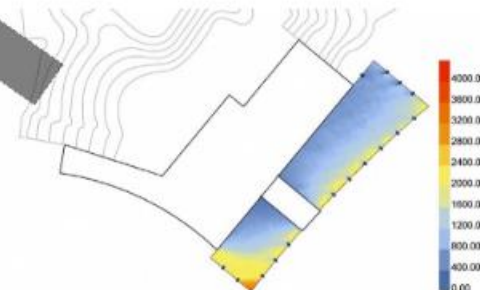
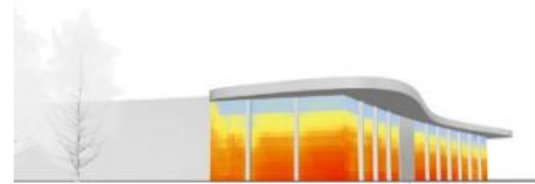
Scenario 2: 1m Canopy



Scenario 3: 2m Canopy



Scenario 4: Curved Canopy



Anticipated Solar Heat Gain: June-September

Anticipated Daylight Hours: June - September



## Northeast Elevation - Approach from Trinity





## Southwest Elevation - Pavilion Arrival





## South Elevation - Outdoor Terrace





Thank You!

