



Quayside Infrastructure and Public Realm

Issues Identification

July 27th, 2022

Project Background

Project Description

- The Quayside Infrastructure and Public Realm project consists of all the infrastructure, internal streets, Parliament Street, Parliament Plaza and Water's Edge Promenade components of the larger Quayside project. (Map to follow)
- Waterfront Toronto will lead the design and construction of this project as master developer and delivery agent to the City of Toronto and in coordination with the development partner for Quayside (Quayside Impact, pending negotiations).
- Waterfront Toronto has undertaken a public procurement and retained WSP (with West 8+DTAH) to lead the design of this work.
- Other consultants have been retained (or will be retained in the future) for Queens Quay, Silo Park, Parliament Slip Lakefill and Parliament Slip Activation.
- The Quayside Impact team will deliver the design and construction of the Privately owned Publicly accessible open spaces within the interior of Blocks 1-3 at Quayside.

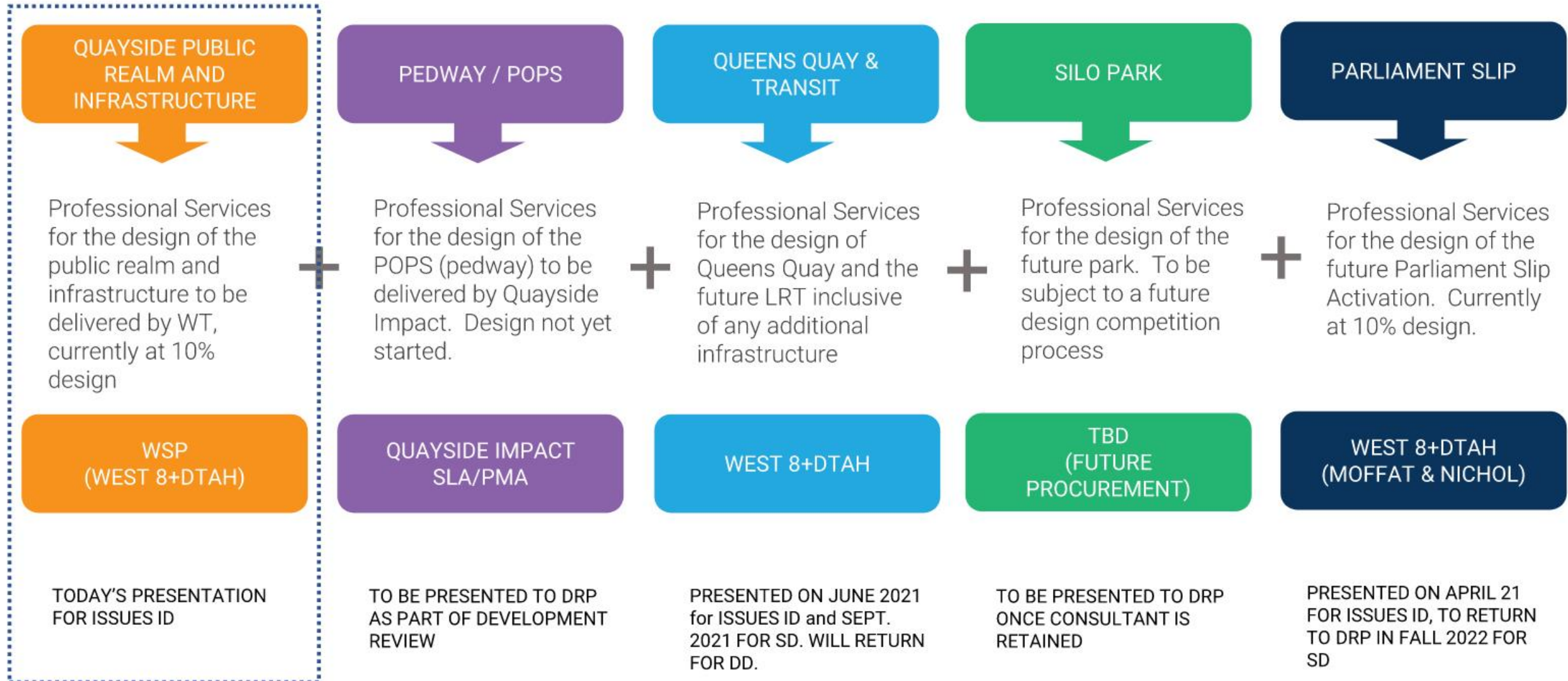
Team Structure & Project Status

Quayside Infrastructure + Public Realm

Proponent: Waterfront Toronto

Design Team: West 8 + DTAH

Review Stage: Issues Identification



Quayside Coordinated Public Realm Program



TODAY'S PRESENTATION

- 2 Parliament Street
- 3 Parliament Plaza
- 7 Water's Edge Promenade
- 8 Street A
- 9 Street D
- 10 Small Street
- 11 South Lakeshore
- 12 East of Bonnycastle
- 13 Street H
- 14 Pedway
- 1a Bonnycastle to Silo - Public Realm/ROW
- 1b Bonnycastle to Silo - Transitway
- 4 Queens Quay Fill
- 6 Silo Park
- 15 Parliament Slip Dockwall/Fill/Environmental
- 16 Parliament Slip WaveDeck
- 17 Harbour Pools
- 18 Floating Dock and Restaurant
- 19 Transportation Finger Pier

Projects

- Quayside Public Realm & Infrastructure
- Queens Quay
- Silo Park
- Proposed POPS
- Parliament Slip

Design Context

Quayside Impact Design Proposal

Quayside Infrastructure + Public Realm

Proponent: Waterfront Toronto

Design Team: West 8 + DTAH

Review Stage: Issues Identification



Design Context

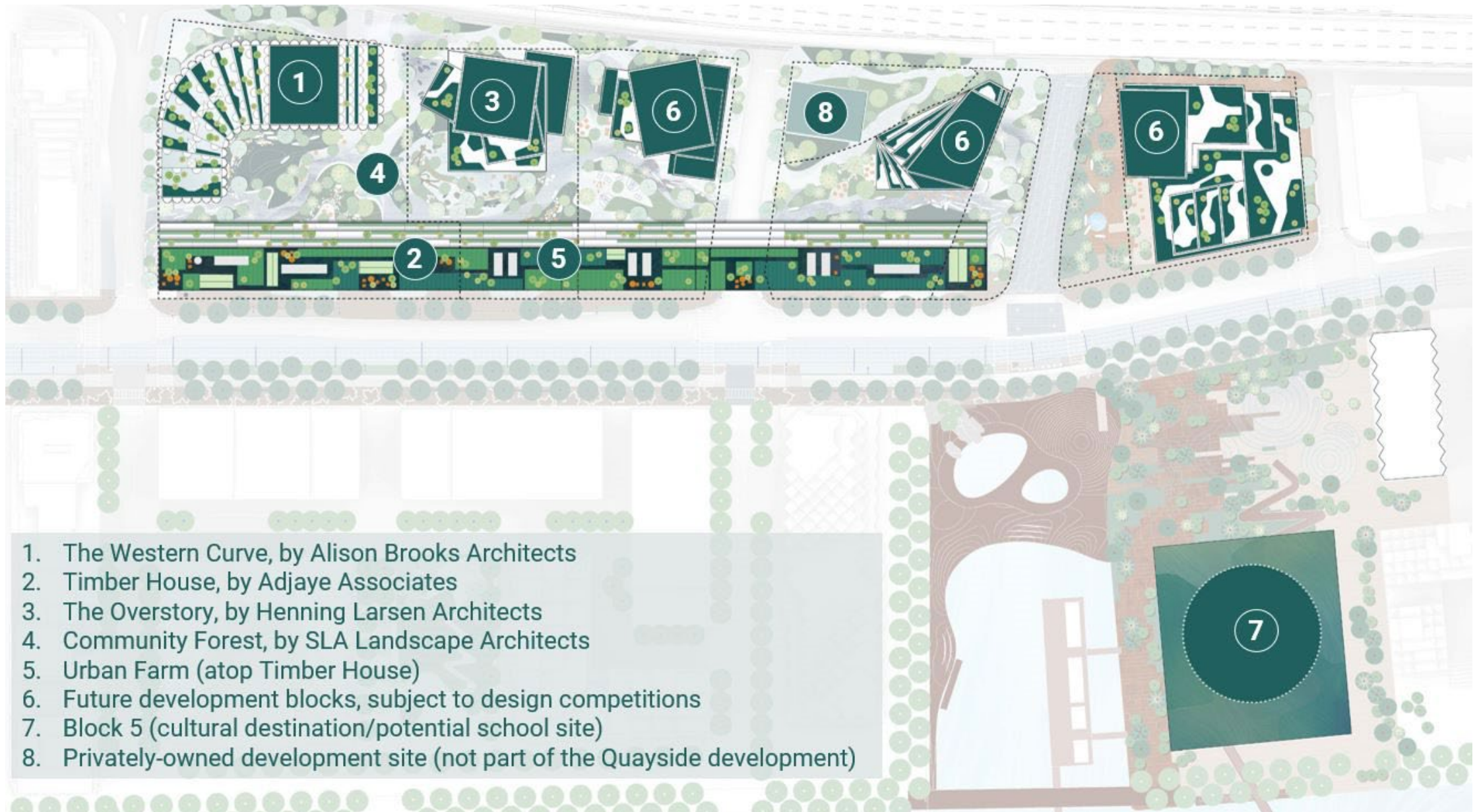
Quayside Impact Proposed Site Plan

Quayside Infrastructure + Public Realm

Proponent: Waterfront Toronto

Design Team: West 8 + DTAH

Review Stage: Issues Identification



Design Context

Quayside Impact Proposed Rendering

Quayside Infrastructure + Public Realm

Proponent: Waterfront Toronto

Design Team: West 8 + DTAH

Review Stage: Issues Identification

Community
Forest,
designed by
SLA
Landscape
Architects



Design Context

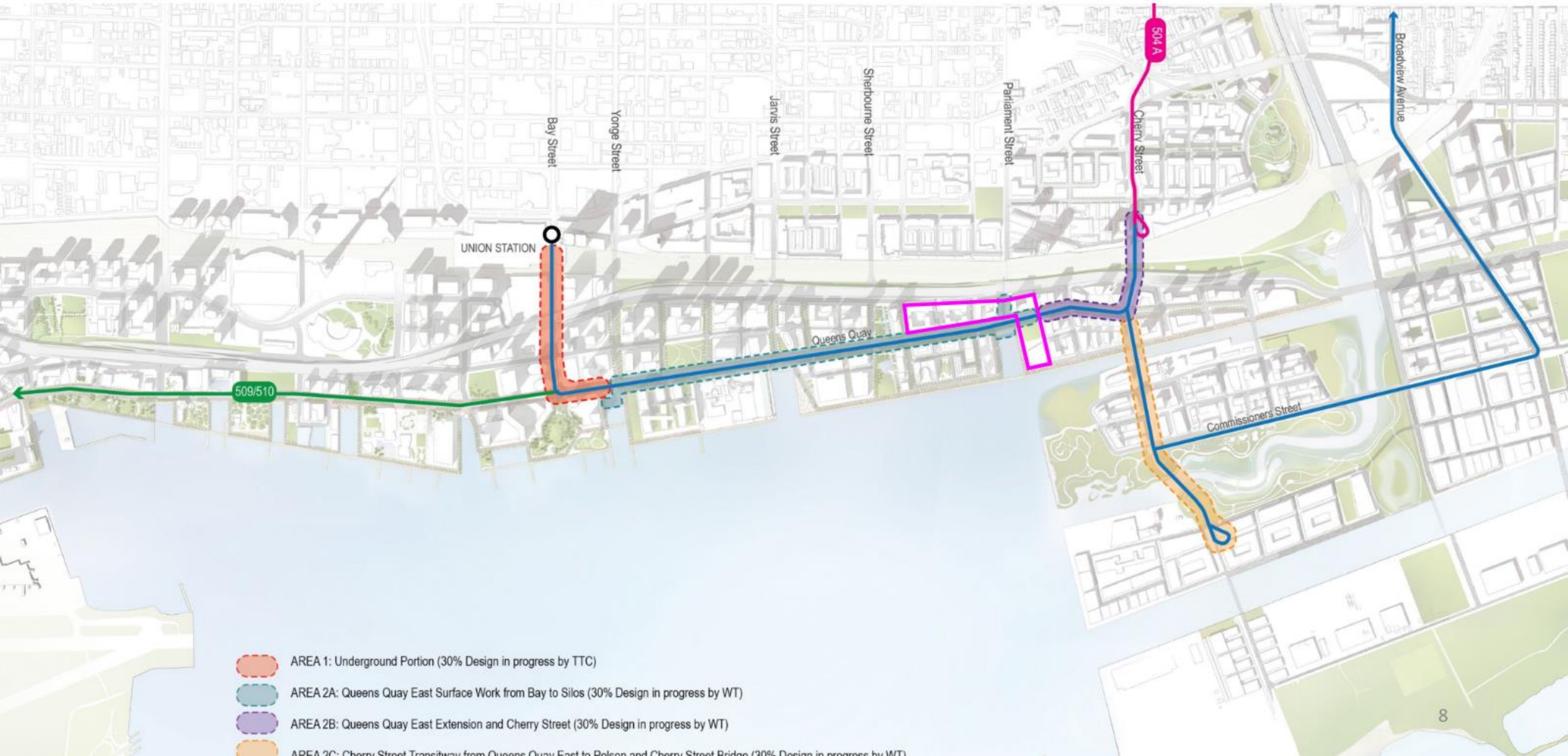
Queens Quay Public Realm

Quayside Infrastructure + Public Realm

Proponent: Waterfront Toronto

Design Team: West 8 + DTAH

Review Stage: Issues Identification



- AREA 1: Underground Portion (30% Design in progress by TTC)
- AREA 2A: Queens Quay East Surface Work from Bay to Silos (30% Design in progress by WT)
- AREA 2B: Queens Quay East Extension and Cherry Street (30% Design in progress by WT)
- AREA 2C: Cherry Street Transitway from Queens Quay East to Belsion and Cherry Street Bridge (30% Design in progress by WT)

Design Context

Queens Quay Public Realm

Quayside Infrastructure + Public Realm

Proponent: Waterfront Toronto

Design Team: West 8 + DTAH

Review Stage: Issues Identification



Design Context

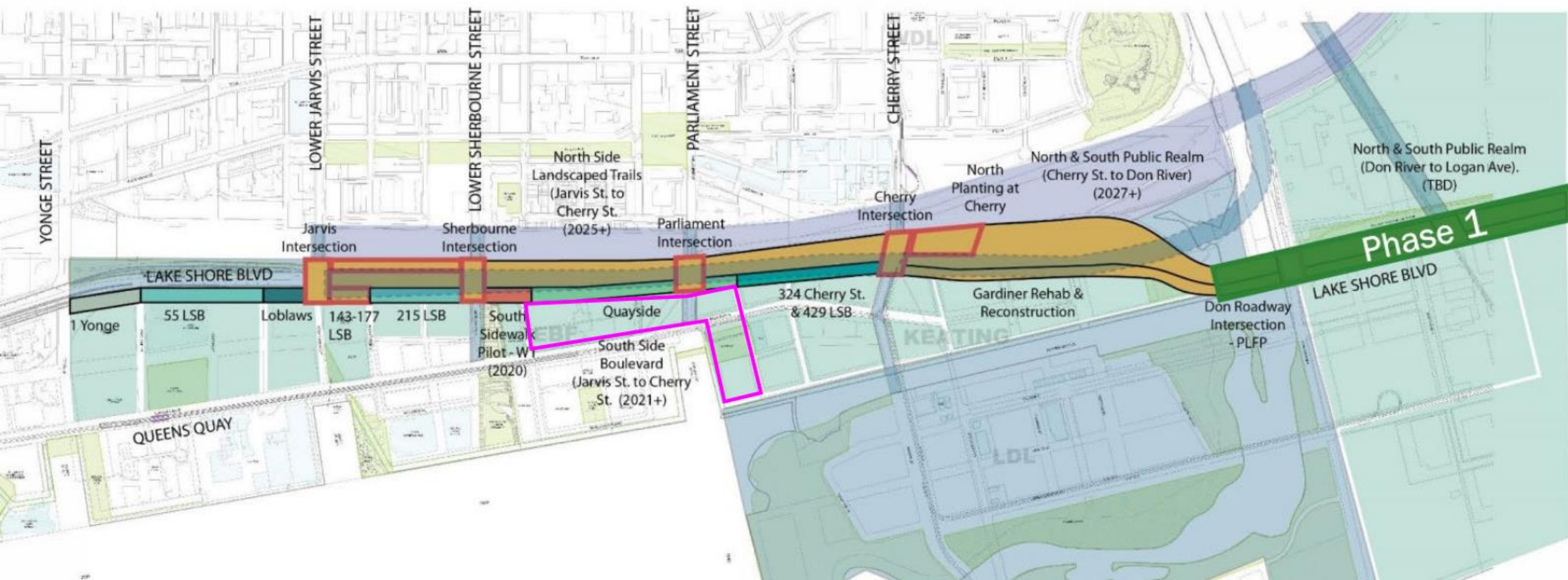
Lake Shore Public Realm Implementation

Quayside Infrastructure + Public Realm

Proponent: Waterfront Toronto

Design Team: West 8 + DTAH

Review Stage: Issues Identification



Design Context

Lake Shore Public Realm Implementation

Quayside Infrastructure + Public Realm

Proponent: Waterfront Toronto

Design Team: West 8 + DTAH

Review Stage: Issues Identification

3.1.5/ GARDINER PUBLIC REALM STREETScape*

* More details to be provided at a later date

The Gardiner Public Realm project will provide a coherent design vision and identity for the Gardiner East corridor from Jarvis to Logan St. and complete 100% construction drawings for the south side boulevard between Jarvis and Cherry St. The design includes public realm improvements to the Lake Shore Boulevard streetscape and residual spaces between the Gardiner Expressway and Rail Corridor, improved cycling and pedestrian connections, as well as a coherent identity for the public realm frontages of new developments to the south.



Figure 3.17 Illustration of the south side Lower Jarvis-Sherbourne Street



Figure 3.18 Illustration south side of Lake Shore Boulevard



Figure 3.19 Illustration of the vision for Lakeshore Boulevard

Public Realm Principles



Awen' Gathering Place, Collingwood

1. Equity

Toronto's waterfront is a public asset and, as such, its public spaces should address the issues of a growing city.

- The Open Spaces Network at Quayside should celebrate the cultural diversity of Toronto and equitably welcome Black, Indigenous and people of colour as users to these spaces.
- Toronto's waterfront sits on the traditional territory of the Mississaugas of the Credit First Nation and has been the gathering place for many Indigenous people. The Open Space Network should respect and celebrate the Indigenous communities and their relationship to this land.



East Bayfront Waters Edge Promenade, Toronto

2. Accessibility

Beyond compliance with accessibility standards, Toronto's waterfront should be:

- inviting and barrier-free for users of all abilities and ages (exceeding existing accessibility standards), offering experiences for all people regardless of ability from across the Greater Toronto Area and beyond.

Waterfront Toronto is undertaking Accessibility Design Guidelines for the waterfront which are expected to be completed in Spring 2023. Any recommendations from the Guidelines should be incorporated, where possible, in the design of the public realm at Quayside.

3. Set new standards for sustainability in the public realm

Waterfront Toronto strives to be a leader in sustainability and climate resiliency.

Sustainability principles need to drive decision making in the public realm.

- Create a cohesive network of green spaces that encourage new innovations in green infrastructure
- Improve ecological performance as a result of new innovations



Dockside Green, Victoria BC



Tanner Springs Park, Portland

4. Health and Wellbeing

The benefits of greenspace have become even more critical to the health and well-being of Canadians during COVID-19.

Learning from the pandemic, Quayside should:

- Foster a connection between people and nature by maximizing access to greenspace
- Deliver greenspace in an integrated way with development

5. Activation and Engagement

The waterfront should embrace the seasonality of Toronto's climate by encouraging year-round use of public spaces, including shoulder and winter months.

- Be a vibrant, urban space that encourages multi-generational use
- Integrates opportunity for larger celebrations and programming
- Enable direct engagement with the water in Parliament Slip for recreational and marine use
- Potential to provide a regional draw
- Integration of curated Public Art

Learning from cities from around the world, Quayside represents an opportunity to create a world-class attraction that is unique to the waterfront.





6. Continuity with the broader Waterfront

Quayside is the eastern gateway to the waterfront and the public realm should draw people to the waterfront.

The public realm at Quayside, both public and privately owned, should:

- Seamlessly integrate into the larger waterfront community
- Embrace design ideas already implemented at the nearby Bayside or Dockside neighbourhoods



Sugar Beach, Toronto

7. Design Excellence and Resilience

The public realm should strive to maintain the standard of design excellence, quality of place, and attention to detail that has been delivered on the waterfront.

Project Approval Stage

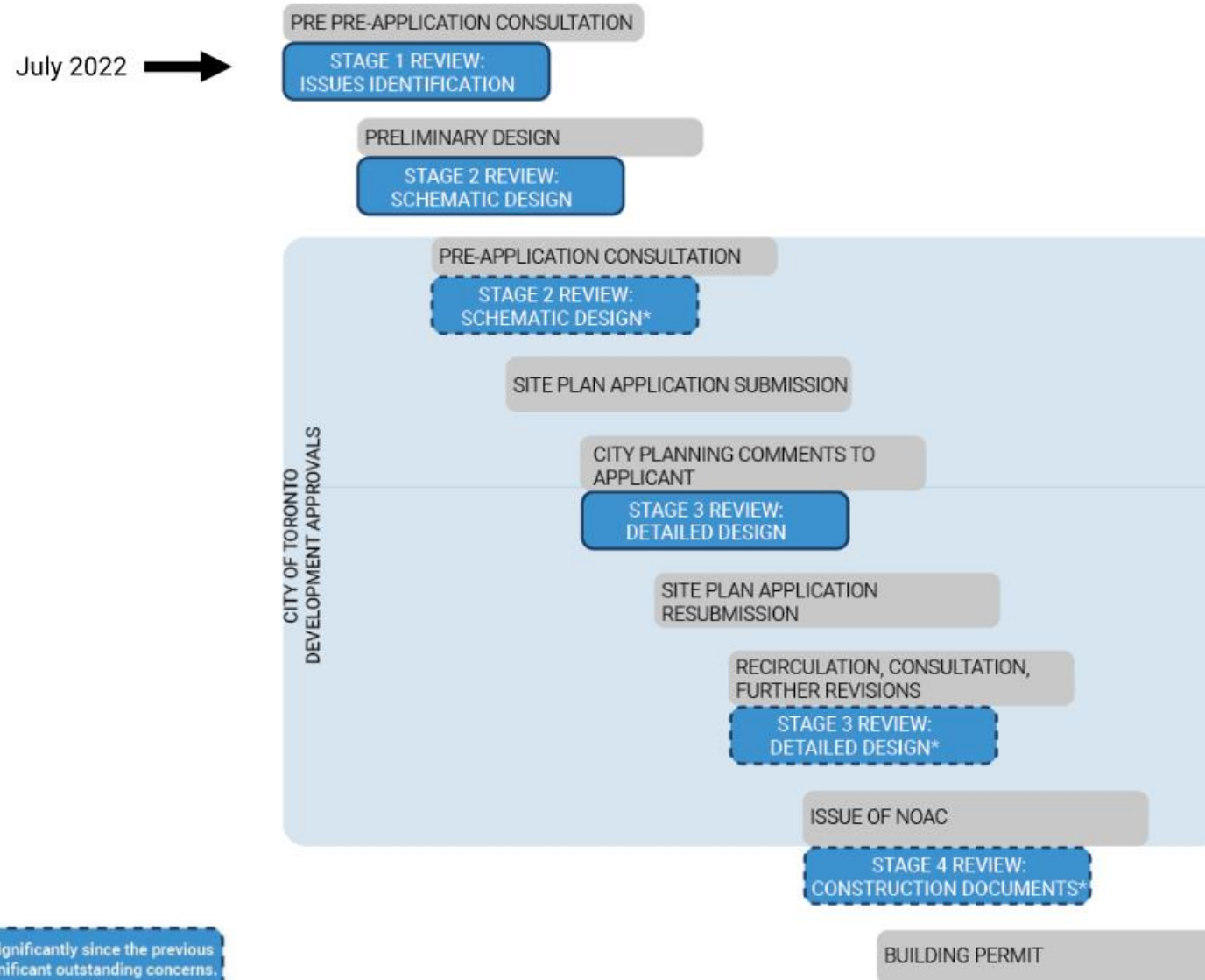
DRP Stream : Public land – Site Plan Application

Quayside Infrastructure + Public Realm

Proponent: Waterfront Toronto

Design Team: West 8 + DTAH

Review Stage: Issues Identification



*This review will only be required if the project has changed significantly since the previous review, or the Panel, Waterfront Toronto, or City staff have significant outstanding concerns.

Areas for Panel Consideration – Waterfront Toronto

Quayside Public Realm
Proponent: Waterfront Toronto
Design Team: West 8 + DTAH
Review Stage: Issues Identification

Relationship with Context/Integration:

- Opportunities and integration with the Quayside Impact RFP submission, i.e. proposed pedway/community forest
- Interface with other major design projects including Queens Quay East, Lake Shore Public Realm, and Parliament Slip.

Design Excellence:

- Opportunities to escalate the level of ambition around the seven public realm principles.

Sustainability and Resilience Design:

- Opportunities to reduce embodied carbon emissions related the public realm work
- Opportunities to support WT Green Building Requirements including resilience planning, landscaping and biodiversity, rainwater harvesting, and the specification of sustainable and non-toxic material.

Quayside Infrastructure and Public Realm

Design Review Panel - Issues Identification

July 27, 2022



WATERFRONToronto



WEST 8 + dtah



MULVEY&BANANI



DPM
Energy

SHOREPLAN

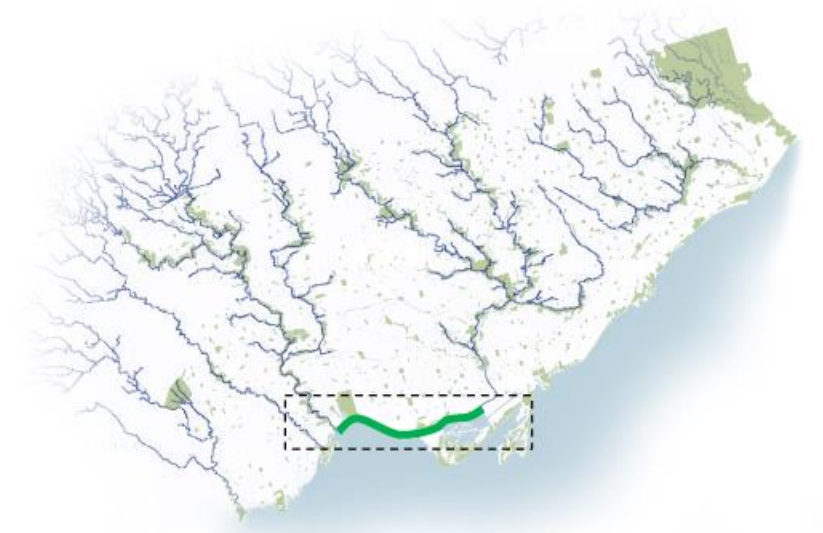
Contents

- 1. Site Analysis, Context, and Constraints**
- 2. Design Vision, Opportunities, and Precedents**
- 3. Due Diligence Phase Concept Designs from 2021**

DRAFT

Site Analysis, Context, Constraints

The Multiple, Woven Waterfront Green Foot of Toronto



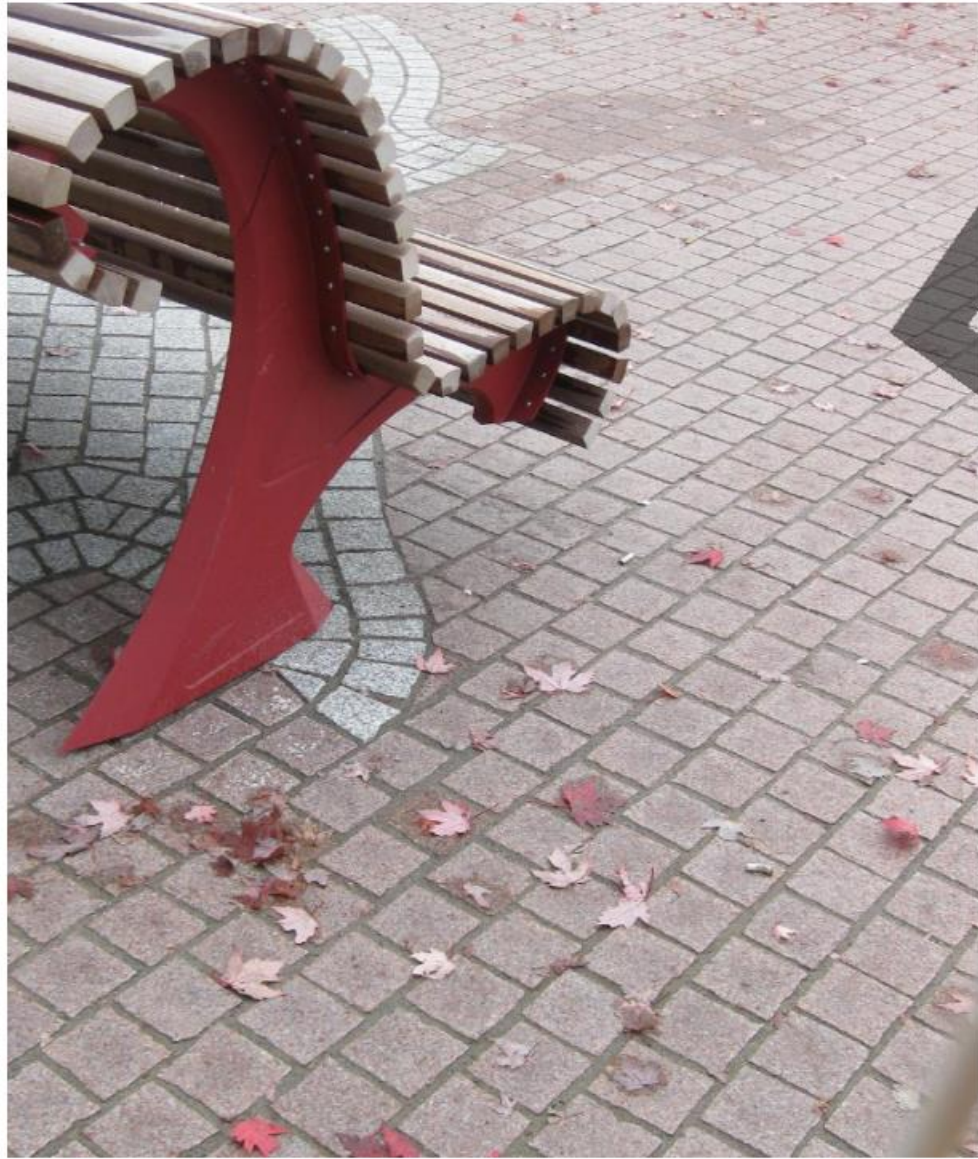
From River to River: Toronto's Green Foot



From Silo to Silo: Quayside hugs Queens Quay and Parliament Slip, the easternmost Slip in the central waterfront, and stepping stone to the Port Lands

Central Waterfront Identity, Continuous Material Palette

Canadian Granite



Canadian Wood



Healthy Mature Trees



Bold and Authentic, Avoiding Suburban Styles

Quayside Today



*East Bayfront: urban growth
extending from Downtown Core*



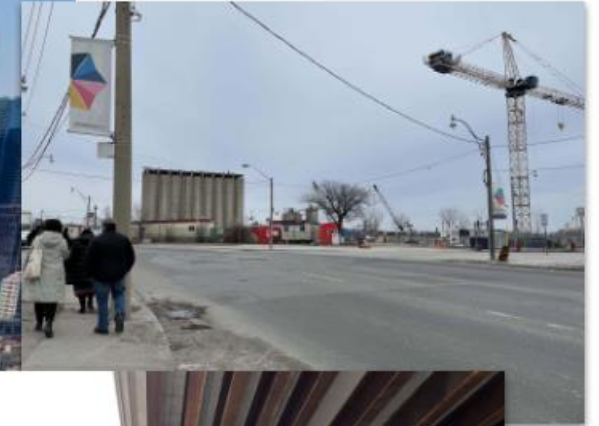
*Bridging the Keating Channel:
Connecting the Port Lands
with the Central Waterfront*

Port Lands & Villiers Island

Keating Channel

Parliament Slip

Quayside
Development Site



*Disconnected and Disoriented
from the Lake*



*Private, Uninviting,
Inaccessible, Unoccupied*

Transforming last century's industrial waterfront into an opportunity for waterfront innovation

From Grey to Green: Creating A Continuous Green Edge Along the Water



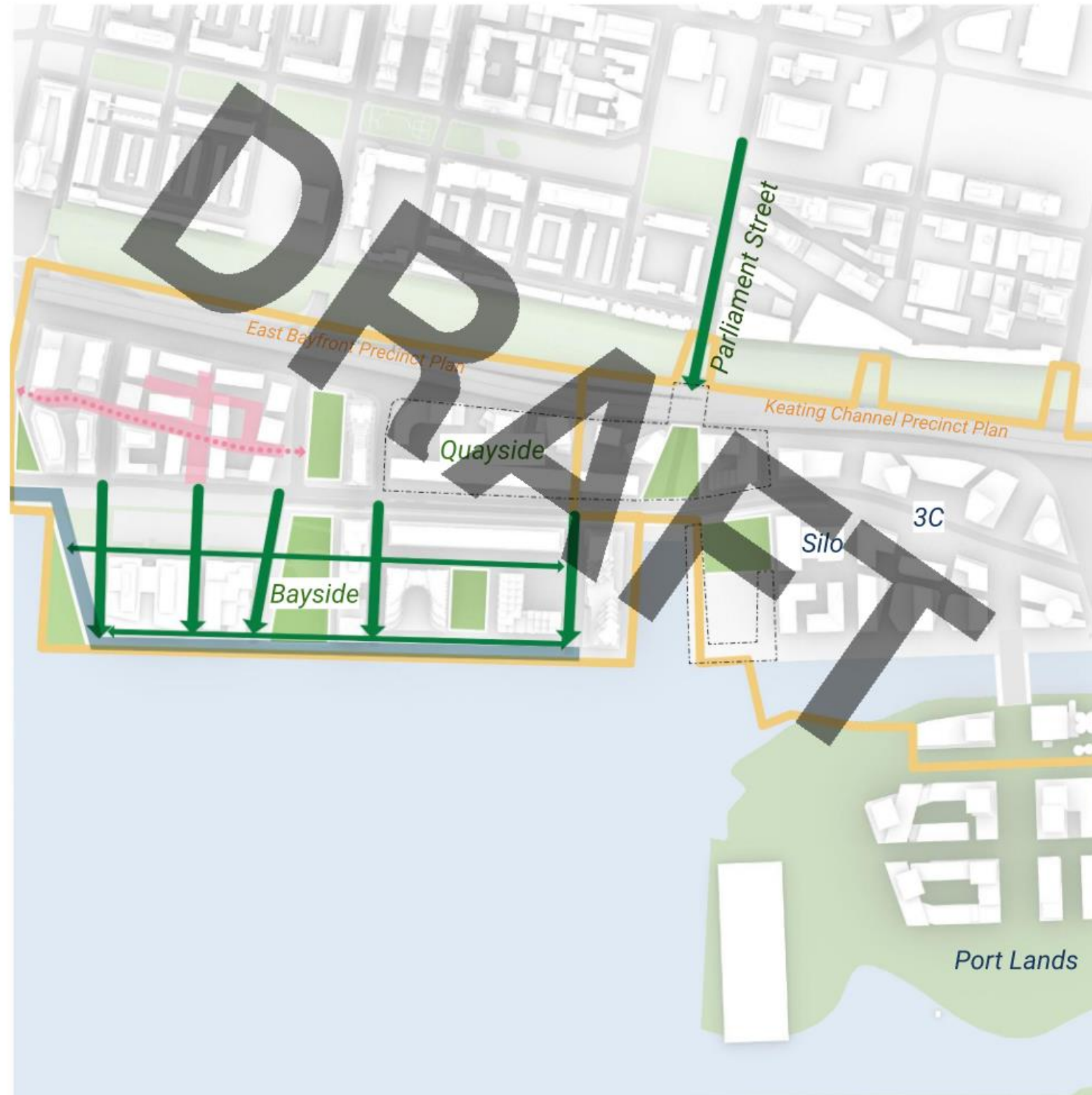
Stitching Together the Eastern Waterfront and Connecting Communities to the Water



Continuous Urban Grain: Building Upon What's There



Extension of Bayside Street and Promenade language stitches waterfront district together



Continuous Urban Grain: Consistent Inner Streets, Sidewalks, and Promenade



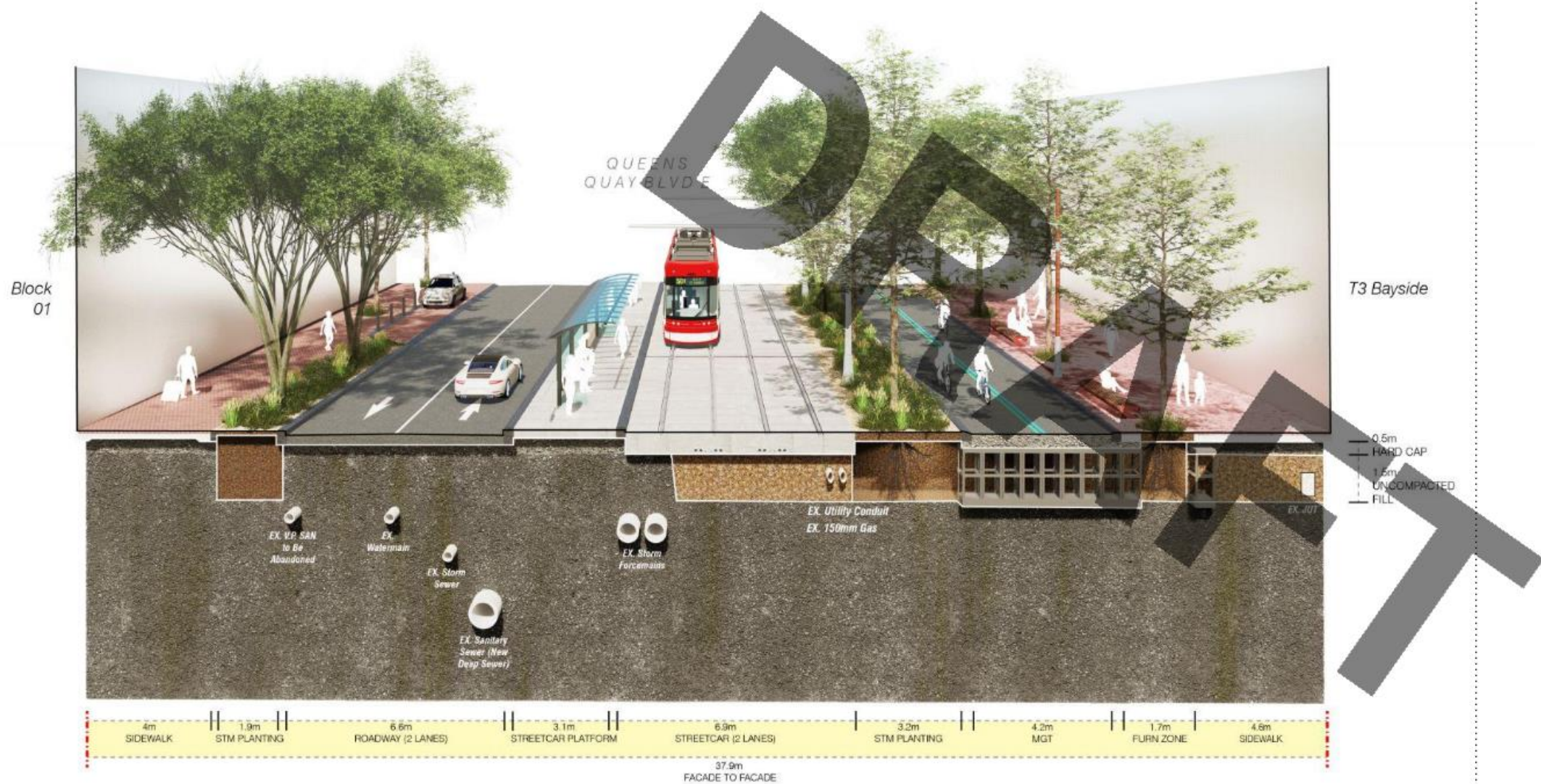
Extension of Bayside Street and Promenade language stitches waterfront district together



Keating Channel Precinct "at cross roads of natural and civic infrastructure... defined by transitions"



Enhancing the Public Realm



Lakeshore Boulevard East,
Green Infrastructure Pilot, 2022

Queens Quay Boulevard East, Proposed Section
(Due Diligence, 2021)

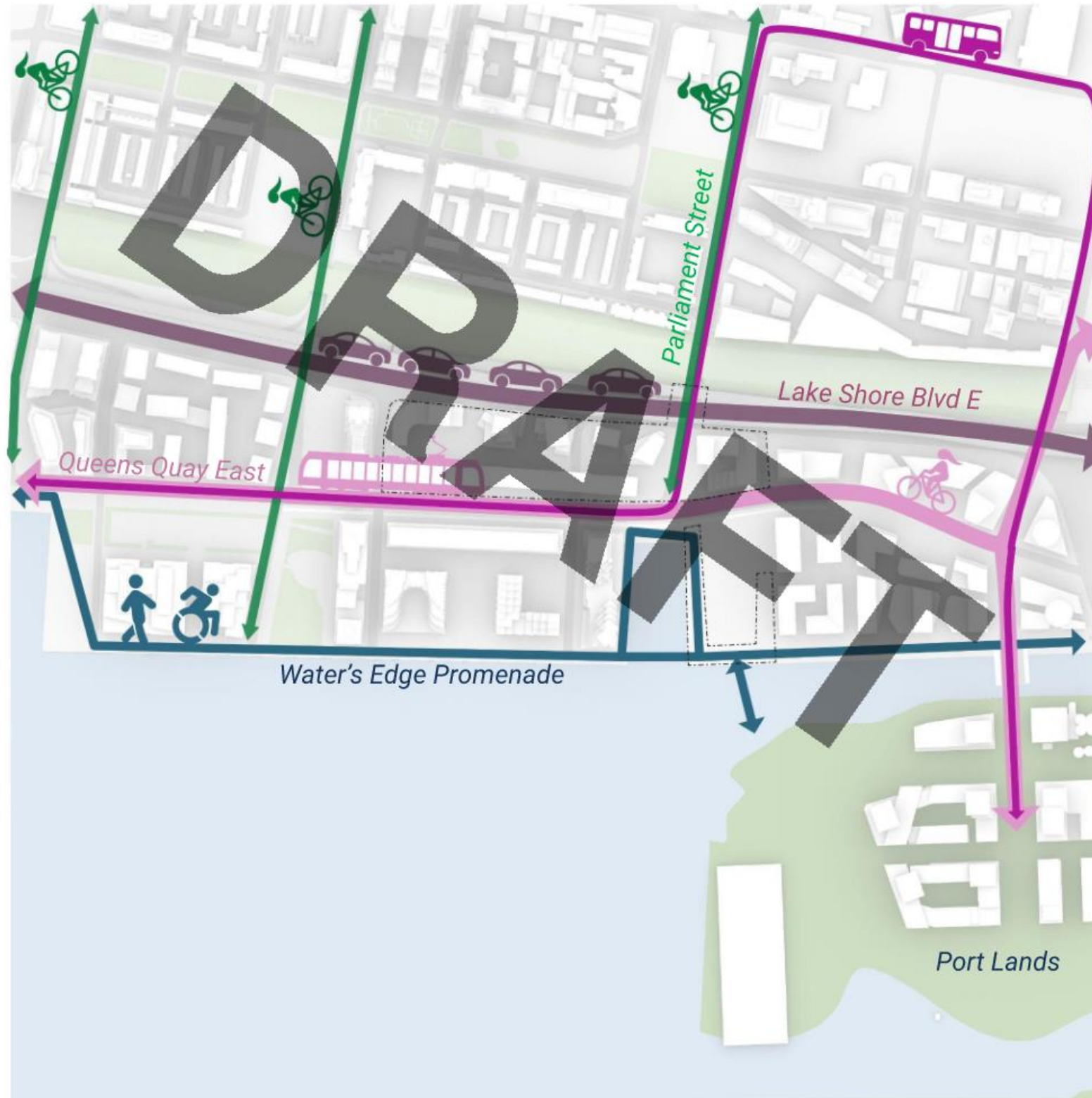
Mobility and Movement in and around Quayside



*Lake Shore Boulevard Public
Realm Plan, 2019*



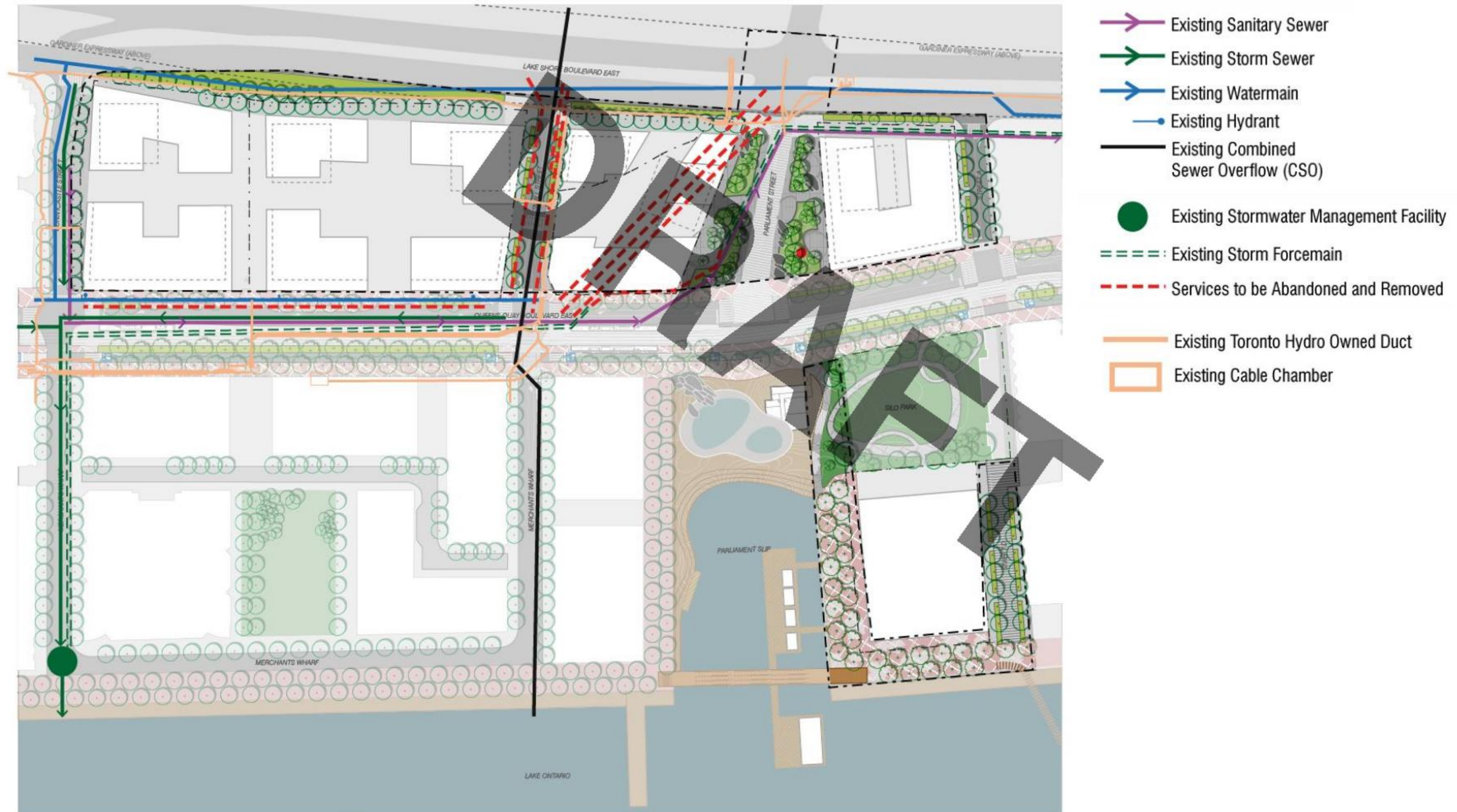
*Queens Quay Boulevard East
Area 2A, WELRT, 2020*



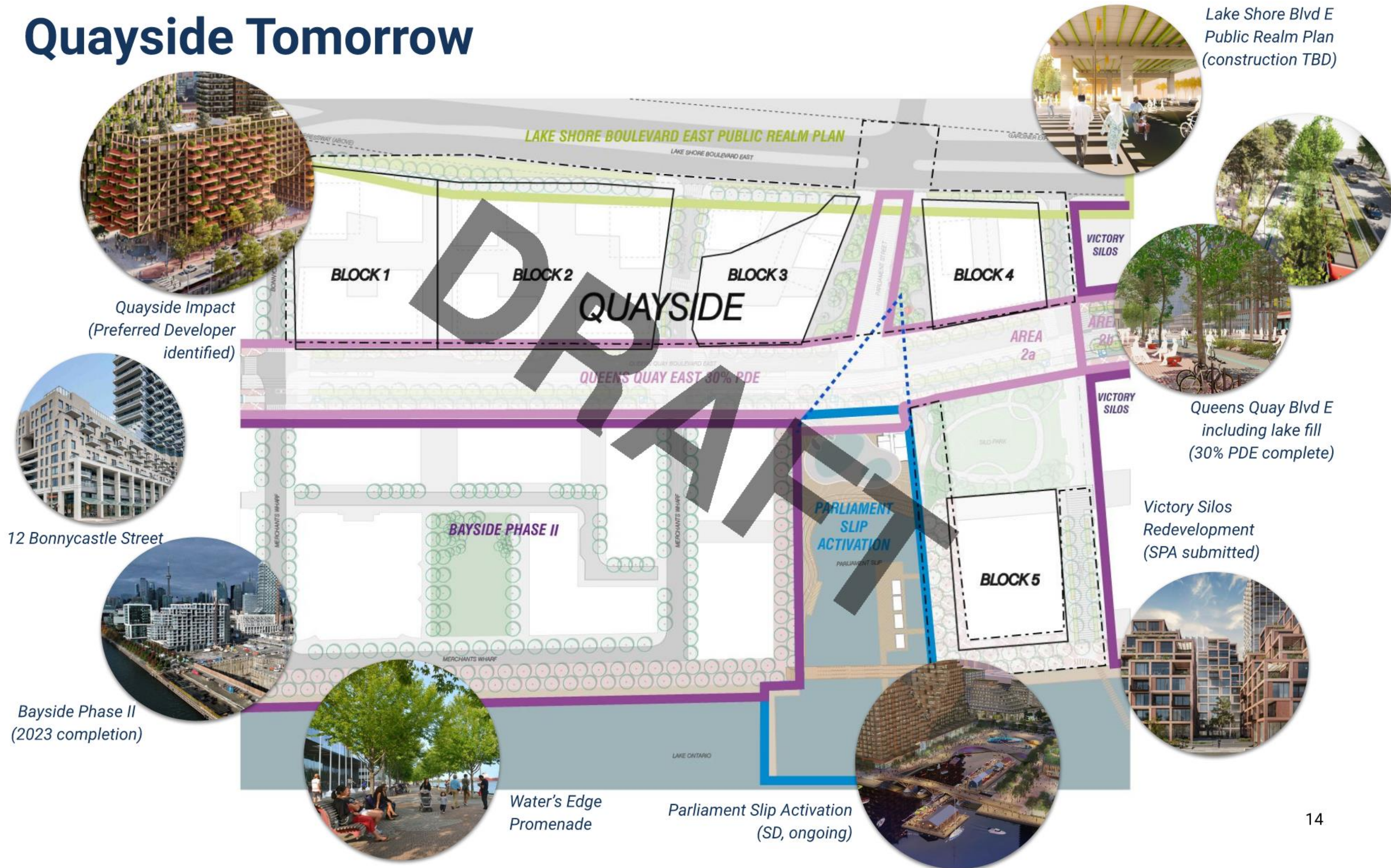
*Queens Quay Boulevard East
Area 2B, WELRT, 2020*

Quayside Today

Existing Situation: Underground Utilities

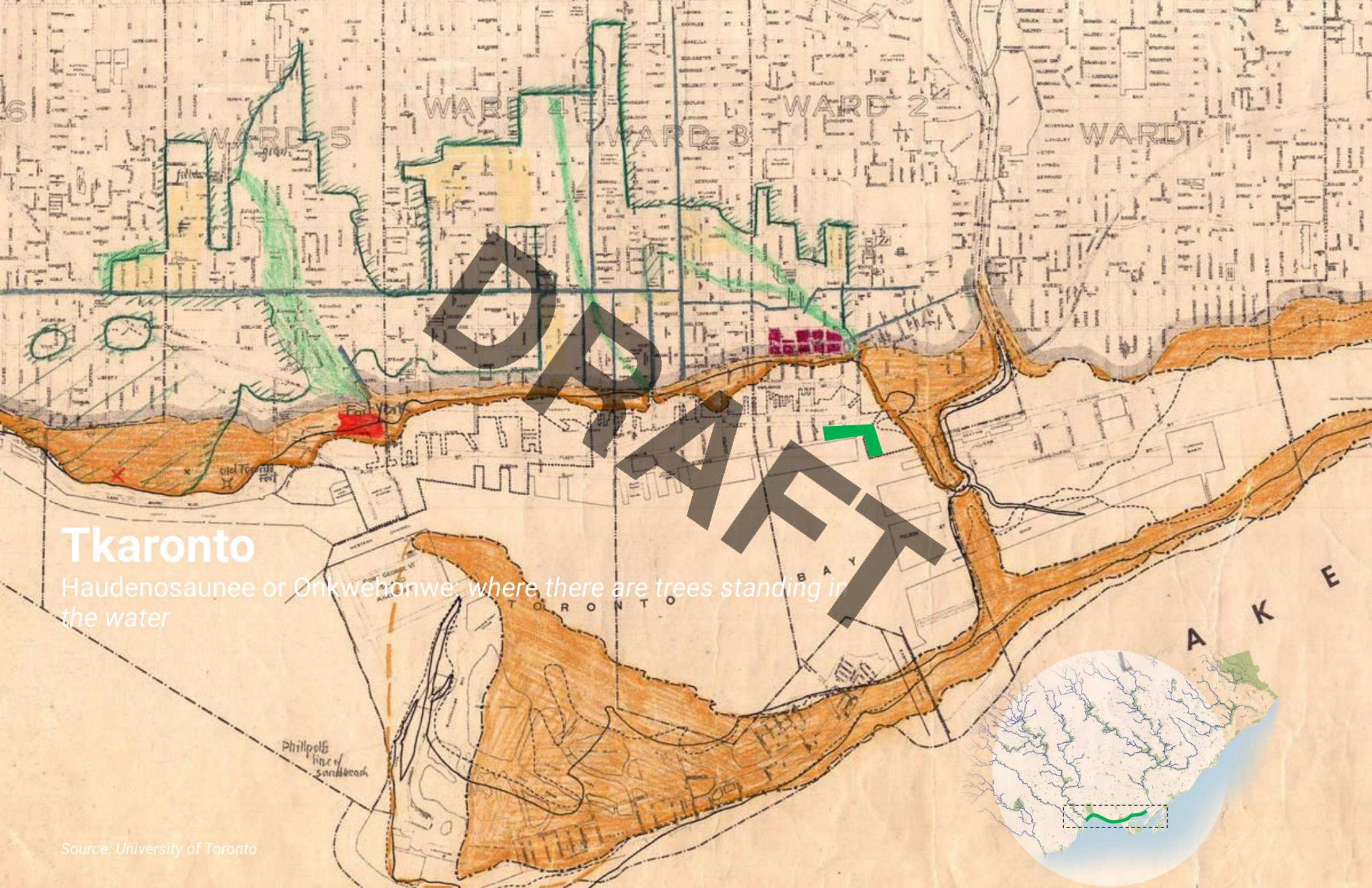


Quayside Tomorrow



DRAFT

Design Vision and Opportunities



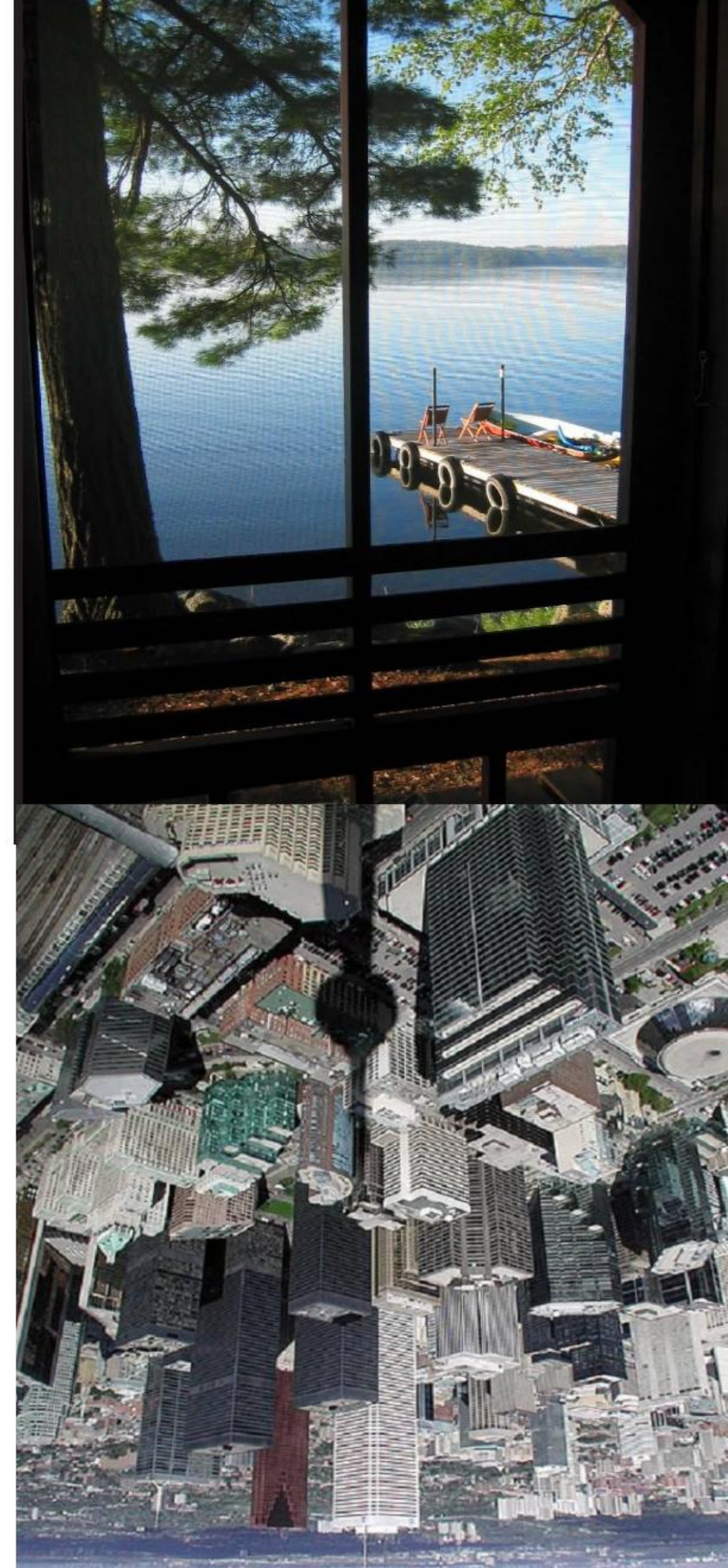
Tkaronto

Haudenosaunee or Onkwehonwe' where there are trees standing in the water

Central Waterfront Master Plan, 2009

“There exists an undeniable illusion of the Canadian lakefront, intimately bound to the mythology of the Canadian outdoors. What could be its urban, metropolitan equivalent?”

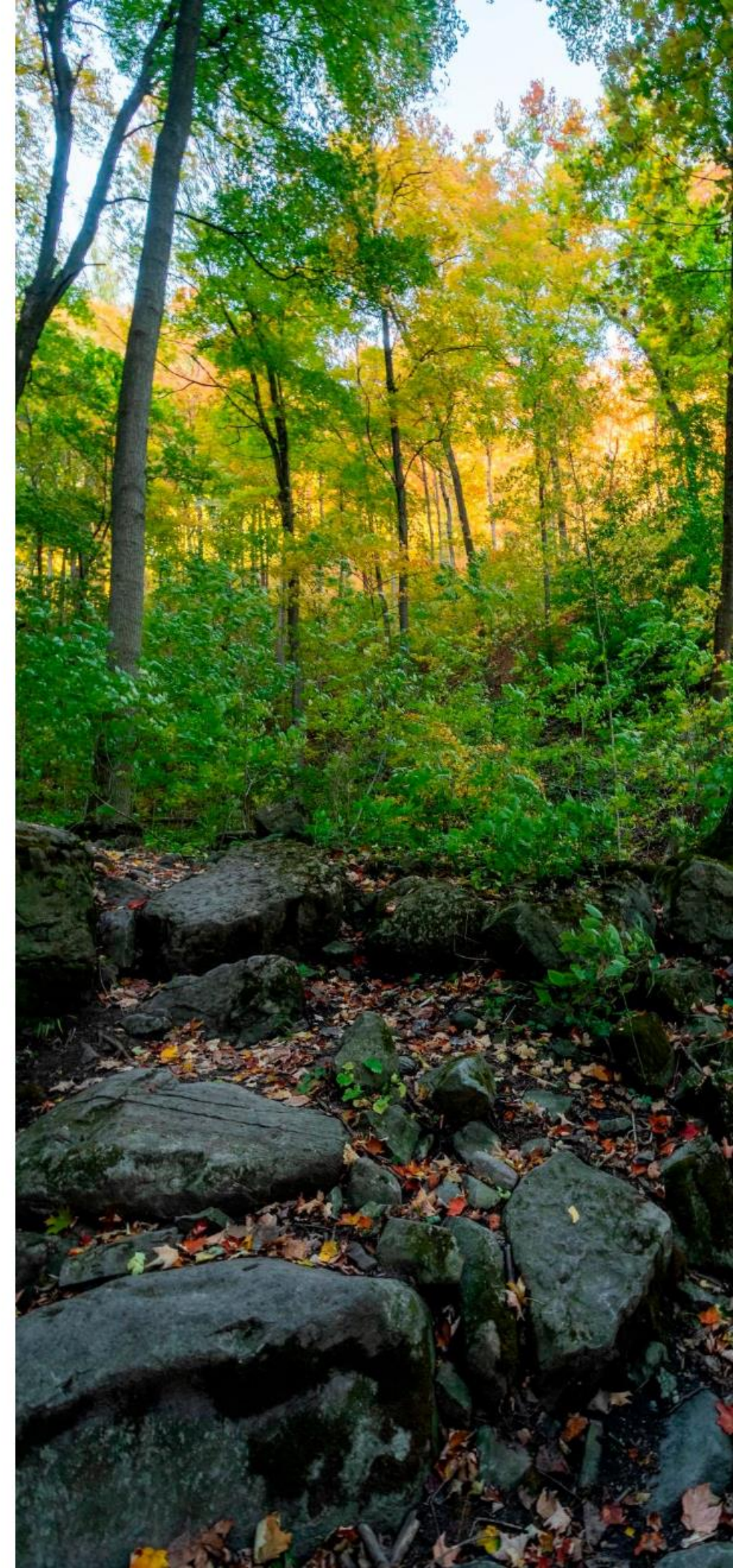
- Adriaan Geuze, West 8 + DTAH
Conceptual starting point for approaching the design of the Central Waterfront



Innovation & Two-Eyed Seeing

“Innovation isn’t always about creating new things. Innovation sometimes involves looking back to our old ways and bringing them forward to this new situation.”

- Honourable Murray Sinclair





Quayside:
The Sacred Healing Forest at the Urban Doorstep



How do we increase **access to restorative nature for health** in a dense high-rise environment?

Imagine a lush green **urban forest** at the edge of Lake Ontario.

Where root space and healthy trees are the priority.



How do we
integrate
**Traditional
Ecological
Knowledge** and
indigeneity in our
designs and design
processes?

Minokamik involvement as
members of the design
team from day 1. Will lead
Indigenous Engagement
process for Quayside Public
Realm.

*Minokamik is a local Indigenous design
services collective, led by community
elders and including traditional
knowledge keepers and environmental
restoration specialists who are
supporting several major public land
and water-focused projects in Toronto.*



How do we manage **rainwater as a resource** at a holistic, integrated district scale?

Innovation that delivers the highest quality public realm, **quality of life for people and other living things.**

The Forest itself: a unique ecology with trees, shrubs, birds, and insects and movement of water.



What does a
**carbon neutral
public realm** look
like and cost, and
how does it
operate in Toronto?

Seven Generation Streets
and Plazas

Conscious material and
energy choices

Delivering the highest
quality public realm, for
**quality of life for people and
other living things.**



How do we create and manage a lakefront urban forest in an **unpredictable changing climate?**

A Place to **Feel Time** and Experience the **Seasons**

Creating comfortable microclimates

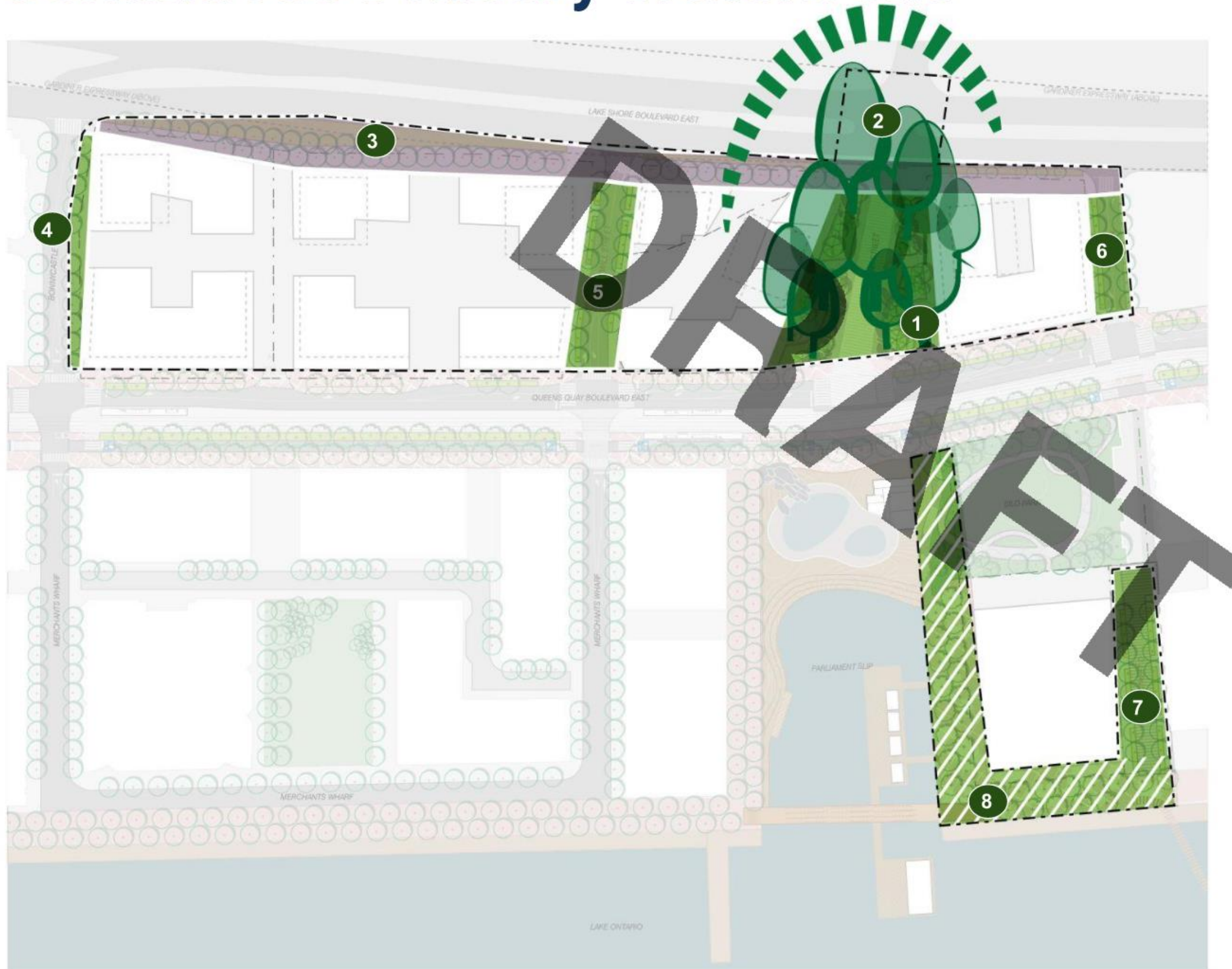
Appreciation of growth and changes to the forest, plants, and animals in it

Biophilic lighting

DRAFT

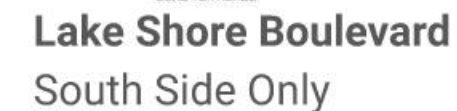
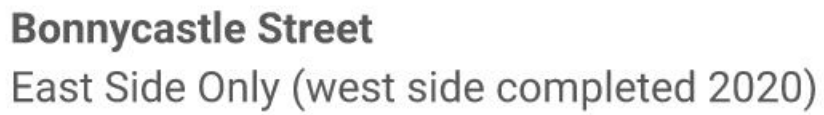
Due Diligence Concept Designs from January 2021
(detailed design currently underway)

Five Consistent Inner Streets, Green Lungs, and a Continuous Primary Waterfront



- 1 Parliament Plaza
- 2 Parliament Street
- 3 Lake Shore Blvd E (S)
- 4 Bonnycastle Street (E)
- 5 Small Street
- 6 Street A
- 7 Street D
- 8 Water's Edge Promenade

From building facade to building facade

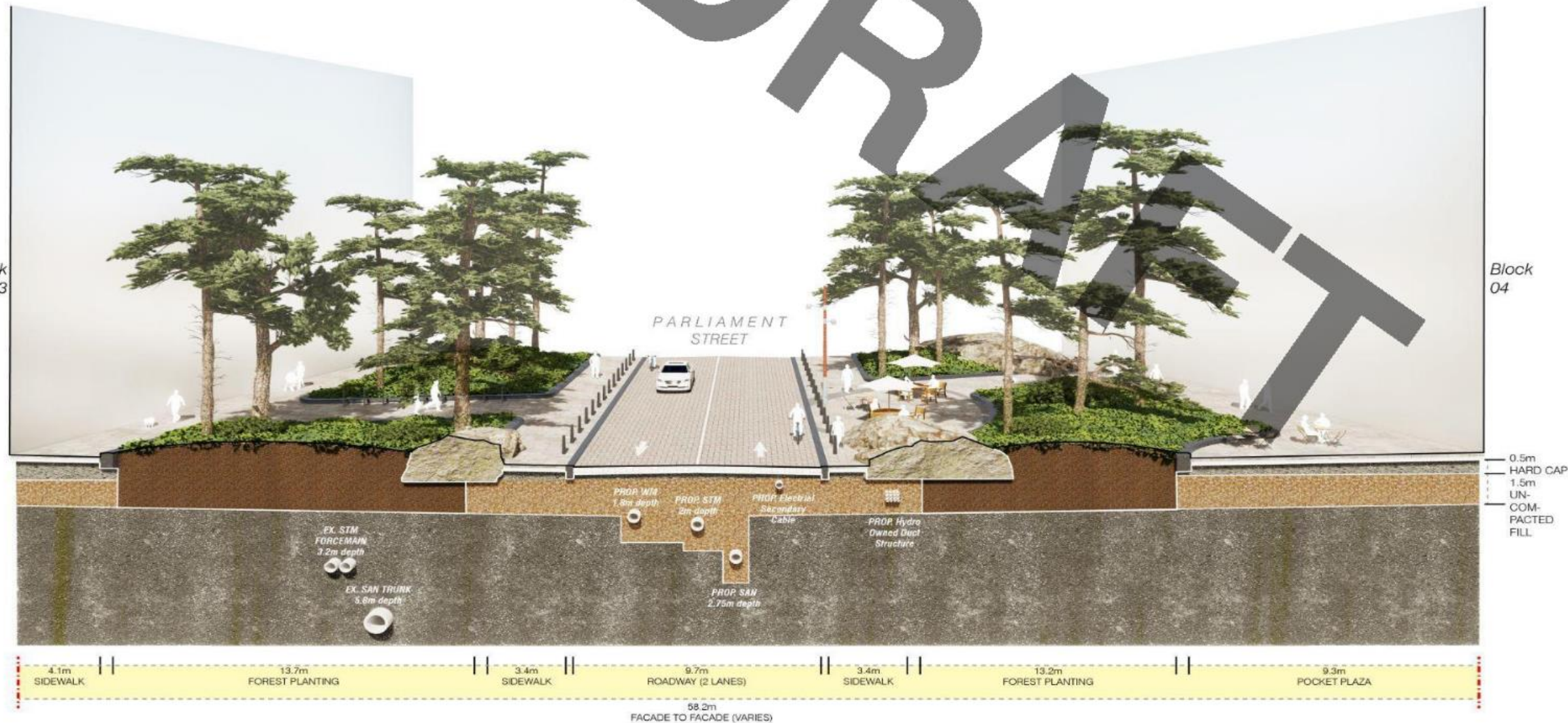


- Bioretention
- Microclimate
- Street identity through urban forest ("I live on the street with Oak trees")



Immersive Mini Forest, Green Heart

Parliament Plaza & Parliament Street



Opportunities:

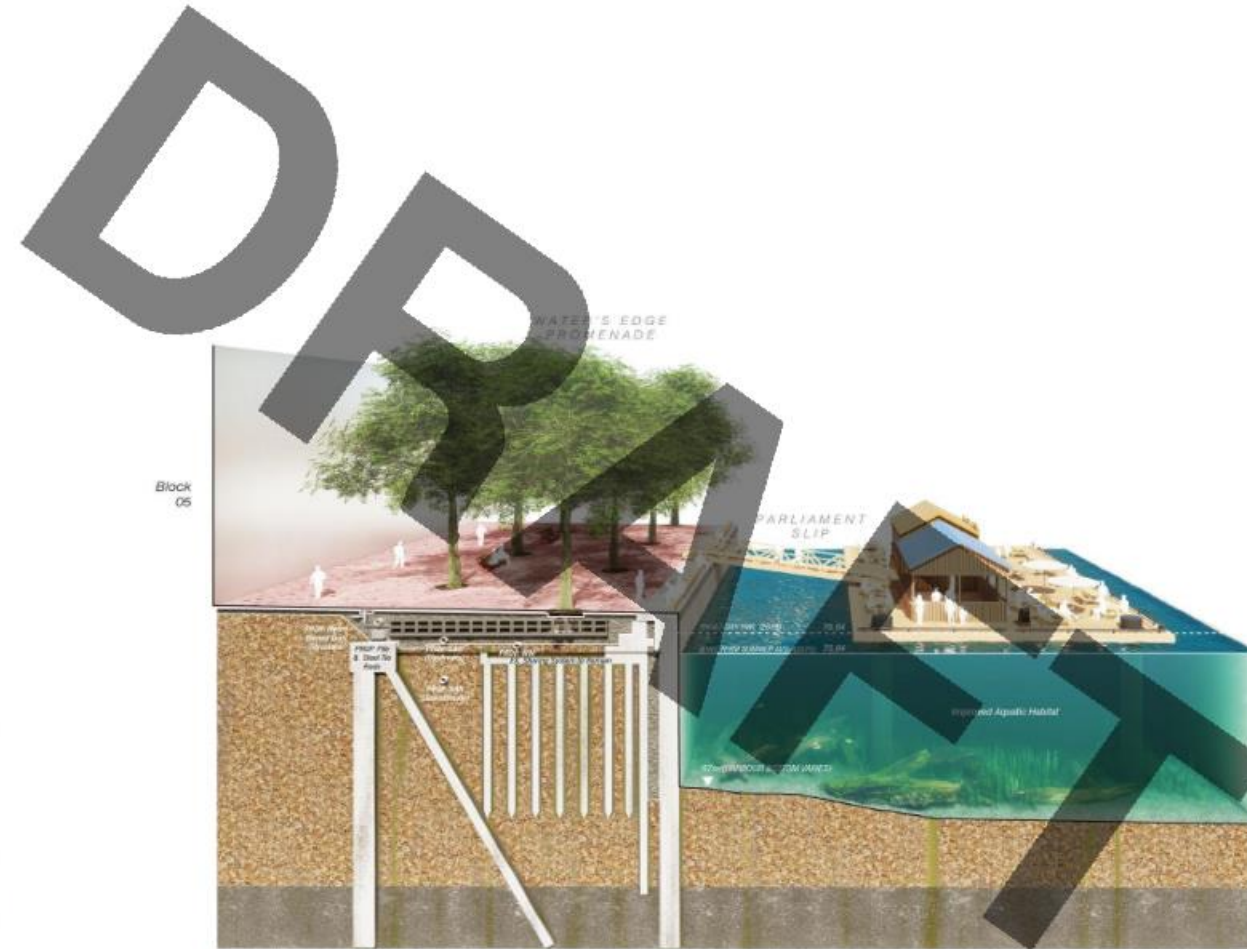
- POPS – maintenance, forest health
- “Slow Zone” arrival to waterfront
- Solar exposure and microclimate moderation
- Most Immersive Forest Experience in the Plan
- Embedded Ecological and Cultural values
- Integration with development ground floor uses

Continuous Primary Waterfront

Water's Edge Promenade



*Design for eventual
bridge landings*



Keating Channel Side

Parliament Slip Side

Opportunities:

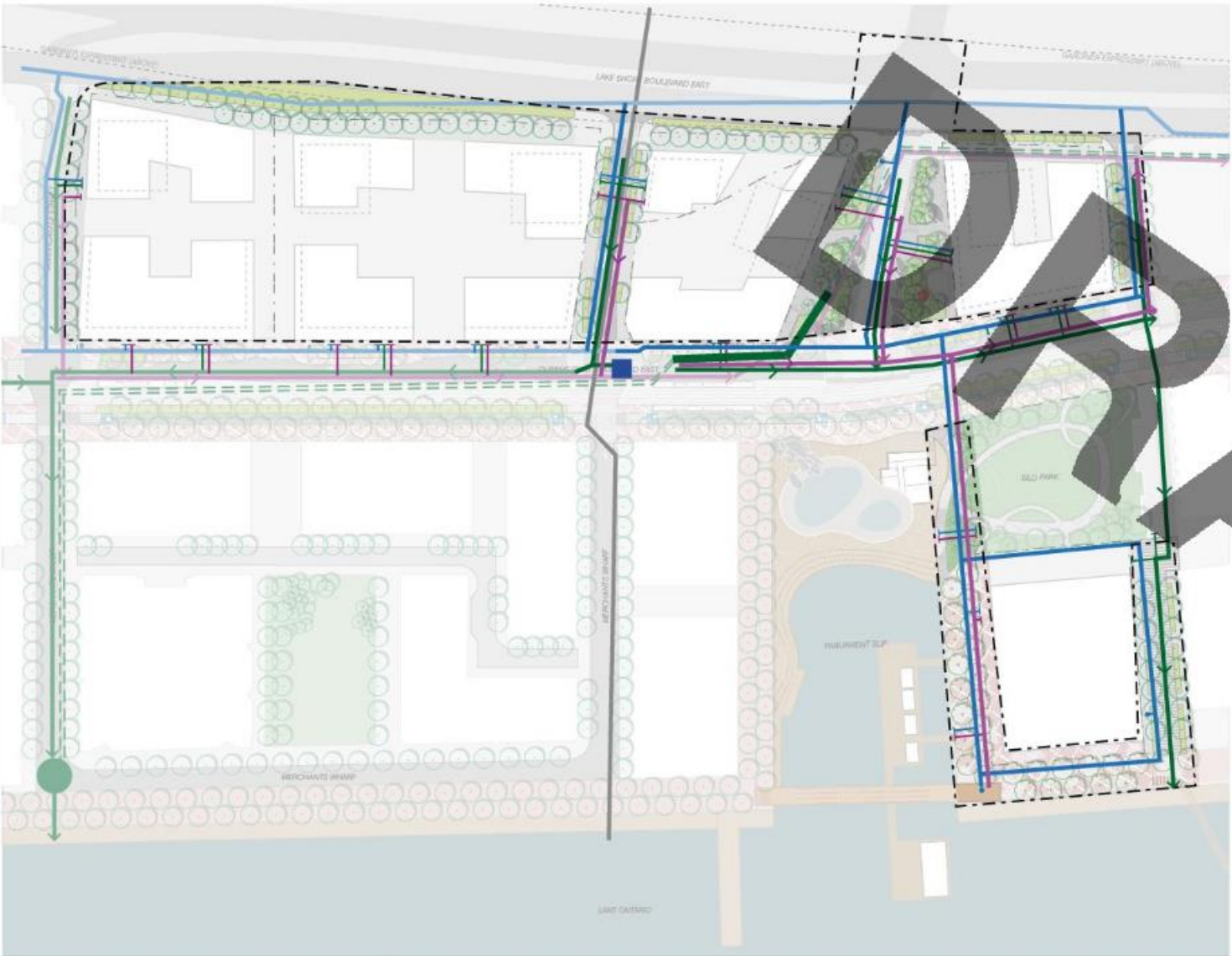
- Bioretention
- Microclimate
- Social Seating
- Connection to and views of Villiers Island and Keating Channel
- Connection to Water's Edge Promenade

Opportunity: Raise Grades



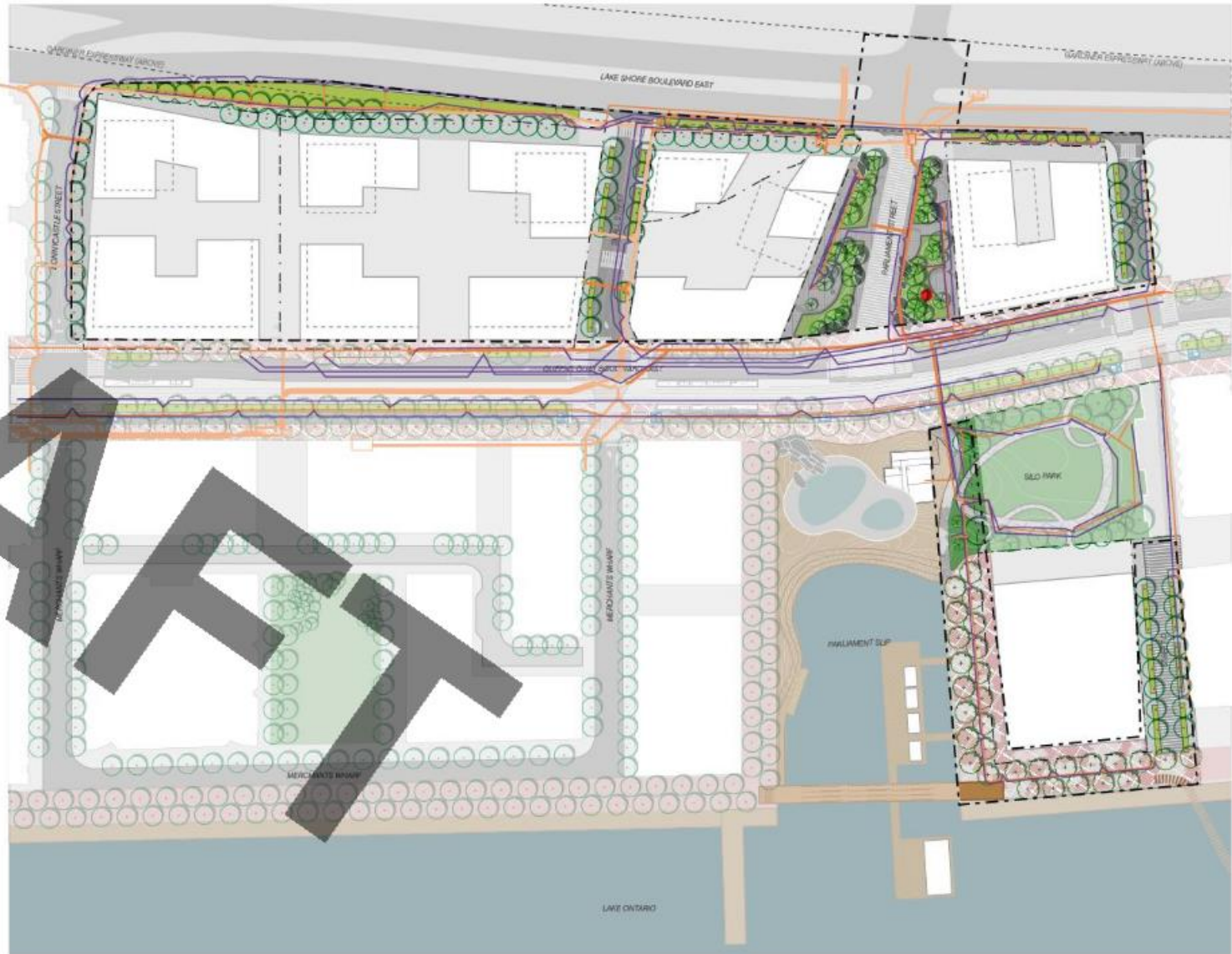
Future Underground Servicing Situation

Wet Utilities

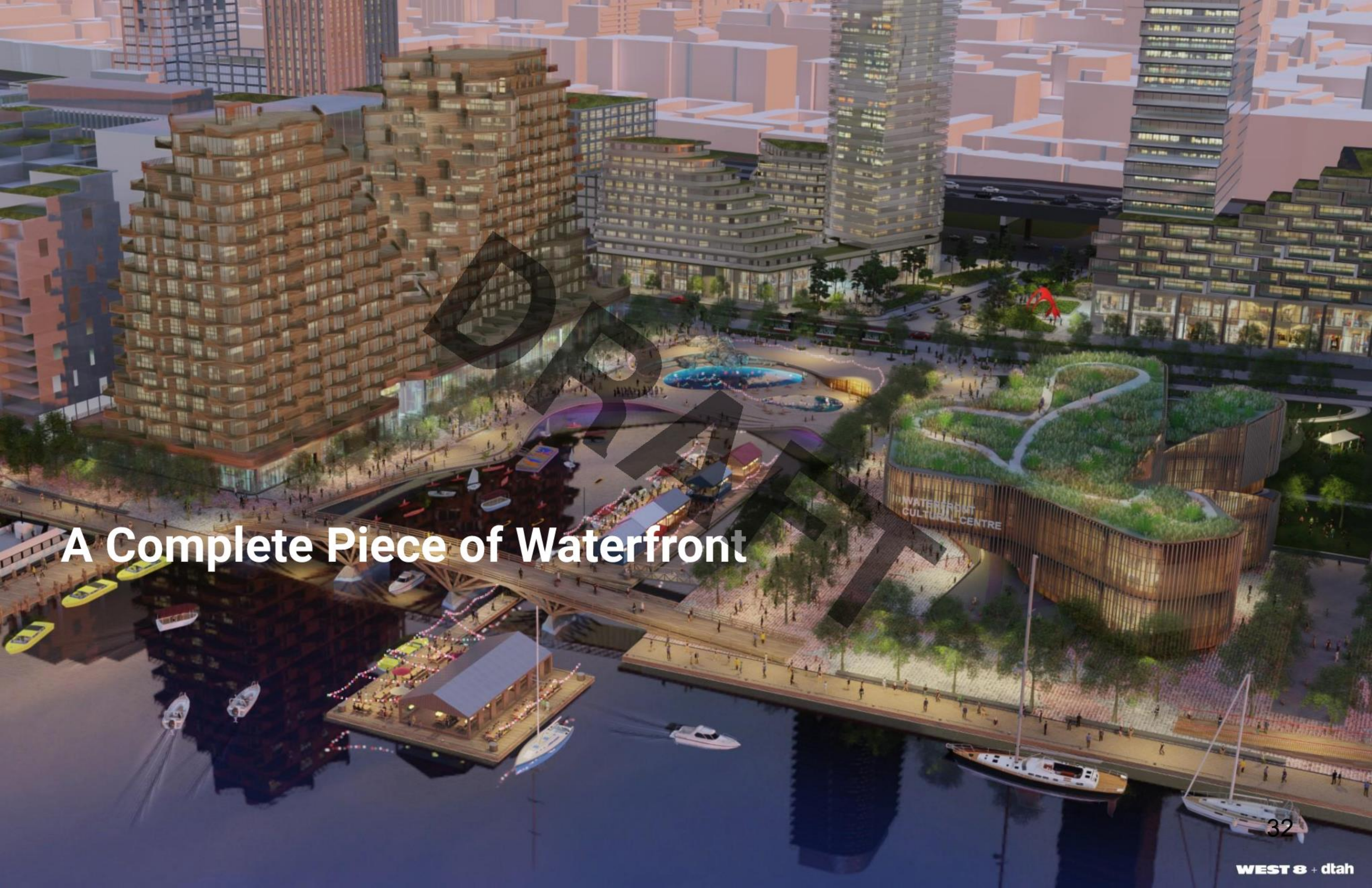


- | | | |
|--|---|----------------------------|
| Existing Sanitary Sewer | Existing Stormwater Management Facility | Proposed Sanitary Sewer |
| Existing Storm Sewer | Existing Storm Forcemain | Block Connection |
| Existing Watermain | | Proposed Storm Sewer |
| Existing Hydrant | | Block Connection |
| Existing Combined Sewer Overflow (CSO) | | Proposed Watermain |
| | | Block Connection |
| | | Proposed Hydrant |
| | | Proposed Storm Forcemain |
| | | Proposed Super Catch Basin |

Dry Utilities



- | | | |
|-----------------------------------|-----------------------------------|-----------------------------|
| Existing Toronto Hydro Owned Duct | Proposed Toronto Hydro Owned Duct | Underground Secondary Cable |
| Existing Cable Chamber | Proposed Cable Chamber | |



A Complete Piece of Waterfront