



October 2006 Edition



In this issue

- [Don River Park](#)
- [Mural Painting Event](#)
- [BMW Toronto Fundraiser to Support Don River Park](#)
- [Community Services Feasibility Study](#)
- [West Don Lands Developer Proposal Call](#)
- [Risk Management Plan](#)
- [Municipal Approvals Update](#)
- [Site Preparation](#)
- [Don River Bridge](#)
- [Special Mentions](#)
- [Questions? Comments?](#)

Don River Park



The concept design for Don River Park is virtually complete and the design team led by Michael Van Valkenburgh Associates, will now start the detailed designs required for park construction. TWRC held its third public meeting in September where the public had an opportunity to provide comments on the proposed final concept design including refinements to programming elements (i.e. playgrounds, skate park and pavilion) and landscape components.

To view the presentation that was made on the final design concept please go to: <http://twaterfront.ca/dbdocs/4523d31729046.pdf>

Mural Painting Event

TWRC hosted a mural painting event on October 10 with elementary students from Downtown Alternative PS, Market Lane PS, St. Michael CS and Nelson Mandela Park PS. The students painted their visions for the new 7-hectare Don River Park on the construction hoarding that surrounds the West Don Lands site.



BMW Toronto Fundraiser to Support Don River Park

waterfronttoronto.ca/.../viewnewsletter...



TWRC would like to extend a big thank you to BMW Toronto for a generous contribution to support Don River Park. On September 21, BMW Toronto, held a fundraising event and raised more than \$40,000. BMW Toronto's contribution to Don River Park is the first private contribution for the new waterfront parks TWRC is developing. The BMW donation will be held in trust by the Toronto Parks and Trees Foundation and will be used for the ongoing operations of Don River Park. Private donations like this will assist the city in ensuring that new waterfront parks are maintained at the high standards to which they are being designed and built.

Community Services Feasibility Study

When people move into the West Don Lands they will be moving into a new neighbourhood and not just a new development. How is TWRC achieving this? By ensuring that service like public transit, parks and community services are developed to coincide with residential development. When fully built out, more than 800 children and their families are expected to be living in the West Don Lands. The West Don Lands precinct plan calls for a school and community centre south of Mill St adjacent to Don River Park as well as two childcare centres. A feasibility study will get underway this fall to determine whether the school can be combined with the community centre and possibly a childcare centre. If these services can't be accommodated on the one site then alternative locations will be identified. Joe Lobko of Joe Lobko Architect Inc. is leading the study. Work is scheduled to begin this fall on a Community Centre Feasibility Study for the West Don Lands.

West Don Lands Developer Proposal Call

Waterfront revitalization is moving into an exciting and new direction – with detailed plans complete for the West Don Lands and municipal approvals and site preparation work well underway, TWRC is poised to start actual development on the first phase of this new mixed-use community. The first neighbourhood to be developed in the West Don Lands is the North River Square neighbourhood also known as the McCord site. North River Square, runs from St. Lawrence Street east to the Don River and King south to the Richmond/Adelaide Ramps, and will have 600 residential units, including 130 units of affordable rental housing. A developer proposal call process will be launched in November. TWRC anticipates that construction will start in the fall of 2007.

Risk Management Plan

In August, ORC, in cooperation with TWRC and the City of Toronto, submitted the risk management plan for Districts 1 and 3 and the Flood Protection Landform to the Ontario Ministry of Environment for review. The risk management plan is based on the detailed technical studies and community input. The community input was obtained during meetings with the West Don Lands community and three public meetings held between July 2005 and April 2006. The Ministry of Environment review is expected to take four to five months.

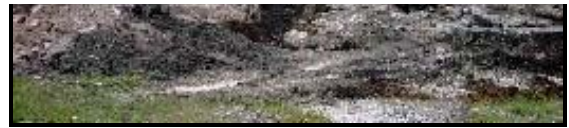
Municipal Approvals Update

The rezoning of Phase 1 of the West Don Lands was approved by City Council at their meeting in June. The amended zoning will accommodate the building heights, setbacks and step-backs as set out in the Block Plan and Design Guidelines. Staff recommendations for the Draft Approval of the Plan of Subdivision for Phase 1 of the West Don Lands were also adopted by City Council in June. In July, Council adopted staff recommendations for lifting the "H" holding symbol in the West Don Lands. The Bills to lift the H will be introduced to Council for enactment once the Subdivision Agreement for Phase 1 is registered and the Risk Assessment/Risk Management plan is accepted by the Ministry of the Environment.

Site Preparation

Absolute Locations and Foodshare will be relocated in October. When relocation is complete, five more buildings will be brought allowing for work to get underway to protect existing infrastructure in preparation for construction of the berm that will provide flood protection to the area.





Don River Bridge



Construction on the extension of the railway bridge over the Don River, as identified in the Class Environmental Assessment for the Lower Don River West Remedial Flood Protection Project, has been proceeding throughout the summer. During the month of September, concrete was poured to create the abutment of the northern half of the railway bridge, girders were installed, and the two mainline tracks relocated to their original alignment on the new bridge section. Construction on the southern half of the railway bridge will commence in October and will be completed later this year. Construction of the west side of the new Bala Pedestrian Underpass has started and will proceed throughout the months of October and November. Both projects will be completed in 2007.

Special Mentions

Each year the Toronto and Region Conservation (TRCA) presents an Honour Roll Award to five individuals or groups who have made a significant, special, or unique contribution to the work of TRCA and the community. This year, Cynthia Wilkey was honoured for her extensive and tireless involvement with the West Don Lands. Congratulations Cynthia, you are an inspiration to all of us!

Questions? Comments?

We want to hear from you! Please email your questions or comments to wdl@twaterfront.ca or call the West Don Lands hotline at 416-214-9990.

