



WATERFRONToronto

February 2009 Newsletter

George Brown College

Stantec Architecture/Kuwabara Payne McKenna Blumberg Architects have been selected by George Brown College to be the lead design consultants for its planned state-of-the-art waterfront campus in East Bayfront.

The campus, which will support up to 4,000 students, will be located on the south side of Queens Quay Boulevard between Lower Jarvis and Lower Sherbourne Streets and will house the college's Centre for Health Sciences, its first student residences and a fitness and recreational complex.

Award-winning architect Bruce Kuwabara will be the lead design principal for the new campus. A leading authority on design, urbanization and sustainability, Mr. Kuwabara is also the Chair of Waterfront Toronto's Design Review Panel and is very familiar with the waterfront and our revitalization plans, goals and challenges.

Construction of George Brown College's new waterfront campus is slated to break ground in 2010.

[For more information.](#)

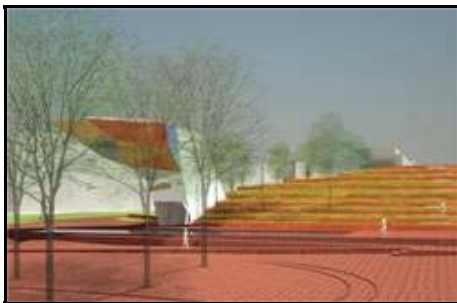
DISTRICT ENERGY

Temporary District Energy

Construction of the temporary district energy facility in the East Bayfront is on schedule to be fully operational in June to service the needs of final development of TEDCO's First Waterfront Place. The framework of the facility is now up and the exterior enclosing walls were recently completed. It is located south of Queens Quay just east of Jarvis Street and directly north of First Waterfront Place, which will be the new home of CORUS Entertainment. This temporary facility will be in use until the permanent district energy centre is built in East Bayfront. As part of Waterfront Toronto's commitment to sustainable development, all heating and cooling needs for new waterfront neighbourhoods will be met through centralized district energy systems.



District Energy Centre



Updated schematic designs for the District Energy Centre in West Don Lands, which is being designed by world renowned firm Steven Holl Architects, were approved by Waterfront Toronto's Design Review Panel at its February meeting. The updated designs include details for the landscape design and were required to meet budget reductions for the project. Planning for the project now proceeds to the design development phase. The District Energy Centre will be located east of Cherry Street and north of the rail corridor and will feature the look and feel of the neighbouring Distillery District. It will include a transit plaza with a multi-coloured solar pergola and a reflecting pool and will lead to an elevated terraced green that connects the project to the future Don River Park. Construction of the facility will begin by the end of 2009.

Storm Water Management System and Parliament WaveDeck

Waterfront Toronto is finalizing plans for an innovative storm water management system in East

Waterfront Toronto is finalizing plans for an innovative storm water management system in East Bayfront, that will be incorporated into a wave deck at Parliament Street. Part of a series of iconic wave decks being installed along the water's edge, the 3300m² pedestrian platform at Parliament Slip is an integration of infrastructure and design and housing a storm water treatment system within its structure. To help naturalize storm water, the deck will feature three holes in its platforms which serve as a 'Daylighting' component allowing UV rays to penetrate the water and work with three underwater storage tanks to disinfect and cleanse. Adjacent to the deck will be an aquatic habitat creation made up of diverse materials to encourage a variety of aquatic life. This habitat will run the length of the 1.5 kilometre water's edge promenade, and will serve as an educational show case example of high quality design and infrastructure integration. Construction is slated to begin in April 2010 and all components of the storm water management system will be completed in early 2012.



Central Waterfront Construction Update



Construction of the Rees and Simcoe wave decks is progressing on schedule. Both wave decks will be open for public use this summer and will help provide continuous public accessibility to the water's edge.

Demolition on existing structures and surfaces that required improvements have been completed at both slips. The installation of the new piling system, part of the necessary substructure for the new wave decks, is well underway at both Rees and Simcoe. Using the help of underwater divers, the aquatic habitat at Rees has been completed with the exception of aquatic structures. Backfilling behind the newly constructed north wall at Simcoe is complete and work has already started on a concrete beam which will rest on top of the wall.

For more information please contact Andrea Kelemen at 416-214-1344 ext. 248 or akelemen@waterfrontoronto.ca.

DESIGN FOCUS

Pedestrian-Oriented Streets to be incorporated into West Don Lands

Waterfront Toronto, with support from the City of Toronto, has developed an innovative design for pedestrian-oriented streets within West Don Lands. These pedestrian-oriented streets introduce a new street typology for the city which erases the boundary between sidewalk and street, and provides a common public space shared by pedestrians, cyclists and motor vehicles.

The concept has successfully been used in European countries including the Netherlands, Germany, England and France throughout history but was popularized in the 1970's. Waterfront Toronto has adopted the Dutch term "Woonerf", meaning 'living street', to refer to this new street model. The detailed Public Realm and Design and Engineering submission is currently being prepared for City review.



UPCOMING MEETINGS/EVENTS

Queens Quay Environmental Assessment Public Meeting #3

The final public meeting for the Queens Quay Revitalization Environmental Assessment will be held on Wednesday, March 25. Further details will be distributed over the next few weeks.

Board of Directors Meetings

Wednesday, March 25, 2009

Wednesday, May 13, 2009

please check website for agenda

Design Review Panel Meetings

Wednesday, March 11, 2009

Wednesday, April 8, 2009

please check website for agenda

To subscribe, click [here](#).

4/7/2010

WATERFRONToronto

To unsubscribe, click [here](#).