

Appendix E – Detailed Project Schedule

ID	Estimate Source	Description	Remaining Duration	Start	Finish	2015 2016 2017 2018 2019 2020 2021 2022 2023 2024											
WF-000		WATERFRONT TORONTO PROJECT	1913	A15-Sep-15	29-Sep-23	[Gantt Chart Summary Bar]											
WF-100		Project Start	0	A15-Sep-15		[Gantt Chart Summary Bar]											
WF-100-01		Funding Availability Due	0	*03-Apr-17		[Gantt Chart Summary Bar]											
WF-100-05		Environmental Site Assessment	486	A02-Nov-15	29-Sep-17	[Gantt Chart Summary Bar]											
WF-100-03		Permitting (Environmental)	225	A13-Apr-16	11-Apr-17	[Gantt Chart Summary Bar]											
WF-100-35		Prepare Permits package	30	A13-Apr-16	12-Jul-16	[Gantt Chart Summary Bar]											
WF-100-40		Approval Process by Regulatory agency	195	13-Jul-16	11-Apr-17	[Gantt Chart Summary Bar]											
WF-100-10		Terms of Reference	0	A02-Nov-15	A01-Mar-16	[Gantt Chart Summary Bar]											
WF-100-15		CBRA	219	A02-Mar-16	03-Apr-17	[Gantt Chart Summary Bar]											
WF-100-20		Data Gap Delineation	65	A02-Mar-16	30-Aug-16	[Gantt Chart Summary Bar]											
WF-100-25		Pilot Soil Testing	130	03-Apr-17	29-Sep-17	[Gantt Chart Summary Bar]											
WF-100-50		Environmental Site Assessment Sign-off	0		29-Sep-17	[Gantt Chart Summary Bar]											
WF-170		Procurement	55	01-Oct-18	14-Dec-18	[Gantt Chart Summary Bar]											
WF-171		NTP	0	17-Dec-18		[Gantt Chart Summary Bar]											
WF-PE		Preliminary Engineering	1000	A15-Sep-15	30-Oct-20	[Gantt Chart Summary Bar]											
WF-PE-120		Permitting	390	03-Apr-17	28-Sep-18	[Gantt Chart Summary Bar]											
WF-PE-130		Design Procurement	65	02-Jan-17	31-Mar-17	[Gantt Chart Summary Bar]											
WF-PE-CORE		PE Core Work Scope	935	03-Apr-17	30-Oct-20	[Gantt Chart Summary Bar]											
WF-PE-CORE-001		Design Begins	0	03-Apr-17		[Gantt Chart Summary Bar]											
WF-PE-130-ADV-002		Excavation, Sorting, and Stockpiling	195	03-Apr-17	29-Dec-17	[Gantt Chart Summary Bar]											
WF-PE-130-ADV-02		Design	174	03-Apr-17	30-Nov-17	[Gantt Chart Summary Bar]											
WF-PE-130-ADV-020		Approvals and Tendering	20	01-Dec-17	28-Dec-17	[Gantt Chart Summary Bar]											
WF-PE-130-ADV-025		NTP	0	29-Dec-17		[Gantt Chart Summary Bar]											
WF-PE-130-ADV-003		Essroc Quay (Cell 1 & 2) and Bridges	131	03-Apr-17	02-Oct-17	[Gantt Chart Summary Bar]											
WF-PE-130-ADV-030		Design	110	03-Apr-17	01-Sep-17	[Gantt Chart Summary Bar]											
WF-PE-130-ADV-040		Approvals and Tendering	20	04-Sep-17	29-Sep-17	[Gantt Chart Summary Bar]											
WF-PE-130-ADV-045		NTP	0	02-Oct-17		[Gantt Chart Summary Bar]											
WF-PE-130-ADV-004		Essroc Quay Cell 3	260	03-Apr-17	30-Mar-18	[Gantt Chart Summary Bar]											
WF-PE-130-ADV-004-010		Design	205	03-Apr-17	12-Jan-18	[Gantt Chart Summary Bar]											
WF-PE-130-ADV-004-015		Approvals and Tendering	54	15-Jan-18	29-Mar-18	[Gantt Chart Summary Bar]											
WF-PE-130-ADV-004-020		NTP	0	30-Mar-18		[Gantt Chart Summary Bar]											
WF-PE-140		Road and Municipal Services	390	03-Apr-17	28-Sep-18	[Gantt Chart Summary Bar]											
WF-PE-141		First Engineering (30% plans) - Submittal	115	03-Apr-17	08-Sep-17	[Gantt Chart Summary Bar]											
WF-PE-142		Final Design	235	11-Sep-17	03-Aug-18	[Gantt Chart Summary Bar]											
WF-PE-143		Tender Documents	40	06-Aug-18	28-Sep-18	[Gantt Chart Summary Bar]											
WF-PE-150		River/Flood Protection Design Package	390	03-Apr-17	28-Sep-18	[Gantt Chart Summary Bar]											
WF-PE-151		First Engineering (30% plans) - Submittal	115	03-Apr-17	08-Sep-17	[Gantt Chart Summary Bar]											
WF-PE-152		Final Design	235	11-Sep-17	03-Aug-18	[Gantt Chart Summary Bar]											
WF-PE-153		Tender Documents	40	06-Aug-18	28-Sep-18	[Gantt Chart Summary Bar]											
WF-PE-160		HYDRO ONE Design Package	260	03-Apr-17	30-Mar-18	[Gantt Chart Summary Bar]											
WF-PE-161		First Engineering (30% plans) - Submittal	54	03-Apr-17	15-Jun-17	[Gantt Chart Summary Bar]											
WF-PE-162		Final Design	166	16-Jun-17	02-Feb-18	[Gantt Chart Summary Bar]											

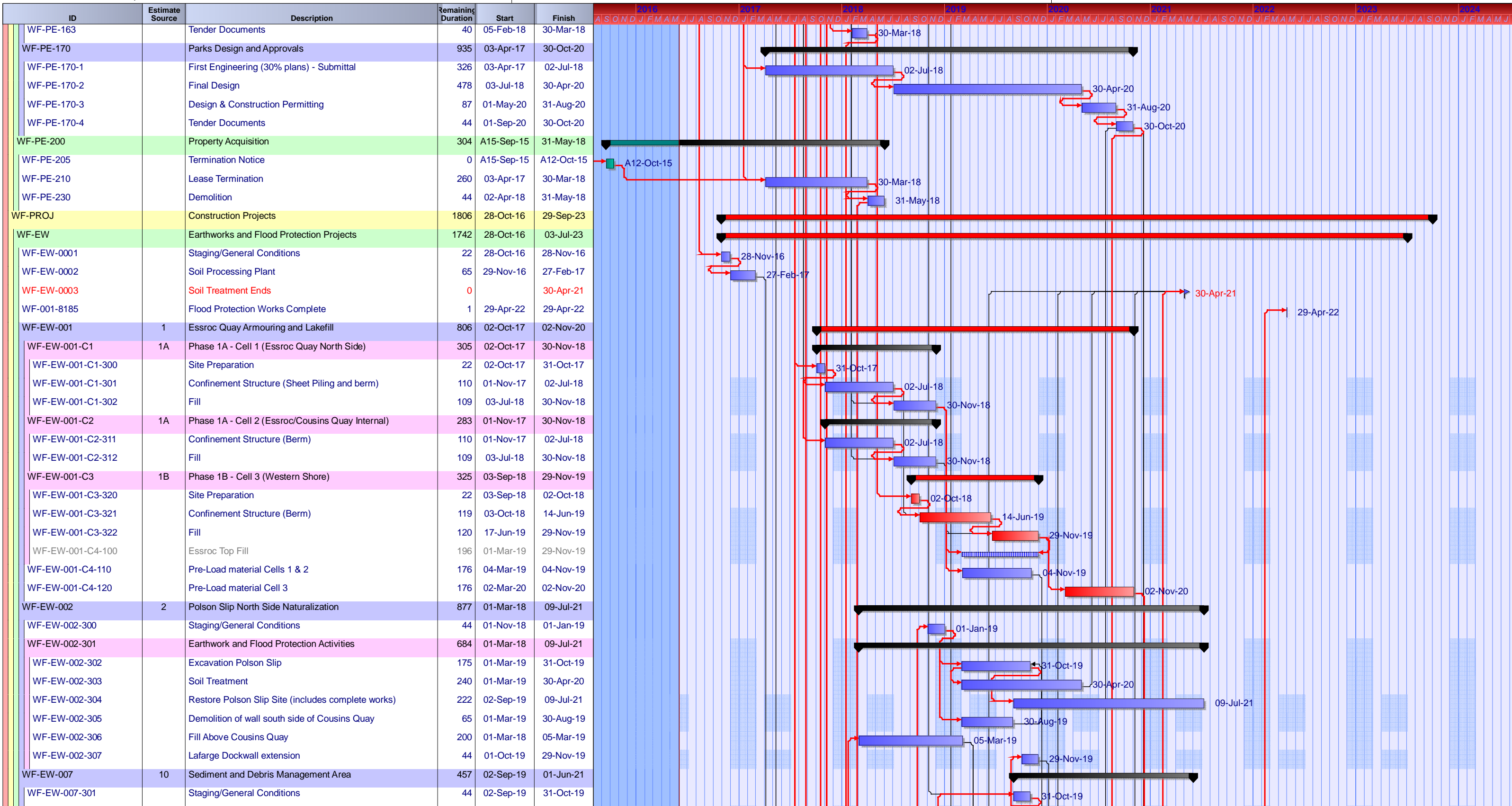
Normal Task
Normal, Critical
Normal, Actual
Summary Task
Summary, Critical
Summary, Actual
Start Milestone Task
Start Milestone, Critical
Start Milestone, Actual



Company: HDR, Inc.
 Manager: Ken Smith (Olympia)

Page 1 of 6
 Planner: Jose Theiler

Sort: Task ID
 Planned Finish date: 29-Sep-23



■ Normal Task
 ■ Normal, Critical
 ■ Normal, Actual
 Summary Task
 Summary, Critical
 Summary, Actual
 ▶ Finish Milestone Task
 Hammock Task
 ▼ Summary, Start



Company: HDR, Inc.
 Manager: Ken Smith (Olympia)

Page 2 of 6
 Planner: Jose Theiler

Sort: Task ID
 Planned Finish date: 29-Sep-23

ID	Estimate Source	Description	Remaining Duration	Start	Finish	2016 2017 2018 2019 2020 2021 2022 2023 2024																																															
WF-EW-007-302		Earthwork and Flood Protection Activities	284	01-Nov-19	01-Jun-21	[Gantt bar: 01-Nov-19 to 01-Jun-21]																																															
WF-EW-007-303		Excavation SDM	173	01-Nov-19	30-Jun-20	[Gantt bar: 01-Nov-19 to 30-Jun-20]																																															
WF-EW-007-304		Soil Treatment	196	01-Nov-19	30-Oct-20	[Gantt bar: 01-Nov-19 to 30-Oct-20]																																															
WF-EW-007-305		Restoration (C4e)	197	01-May-20	30-Apr-21	[Gantt bar: 01-May-20 to 30-Apr-21]																																															
WF-EW-007-306		SDM Wetland Construction	22	03-May-21	01-Jun-21	[Gantt bar: 03-May-21 to 01-Jun-21]																																															
WF-EW-007-307		SDM On-shore Management Area	22	03-May-21	01-Jun-21	[Gantt bar: 03-May-21 to 01-Jun-21]																																															
WF-EW-008	9	First Gulf Site Flood Protection Landform	259	03-May-21	28-Apr-22	[Gantt bar: 03-May-21 to 28-Apr-22]																																															
WF-EW-008-300		Staging/General Conditions	22	03-May-21	01-Jun-21	[Gantt bar: 03-May-21 to 01-Jun-21]																																															
WF-EW-008-301		Flood Protection Land Form (FPL)	70	02-Jun-21	07-Sep-21	[Gantt bar: 02-Jun-21 to 07-Sep-21]																																															
WF-EW-008-302		Finishing	83	06-Oct-21	28-Apr-22	[Gantt bar: 06-Oct-21 to 28-Apr-22]																																															
WF-EW-009	8	Don Roadway Valley Wall Feature	371	01-May-19	30-Sep-20	[Gantt bar: 01-May-19 to 30-Sep-20]																																															
WF-EW-009-N-300		North of Commissioner St.	371	01-May-19	30-Sep-20	[Gantt bar: 01-May-19 to 30-Sep-20]																																															
WF-EW-009-N-301		Staging/General Conditions	22	01-May-19	30-May-19	[Gantt bar: 01-May-19 to 30-May-19]																																															
WF-EW-009-N-302		Construct Wall Feature	120	31-May-19	14-Nov-19	[Gantt bar: 31-May-19 to 14-Nov-19]																																															
WF-EW-009-N-303		Pre-loading (Don Roadway wall North)	229	15-Nov-19	30-Sep-20	[Gantt bar: 15-Nov-19 to 30-Sep-20]																																															
WF-EW-009-S-300		South of Commissioner St.	371	01-May-19	30-Sep-20	[Gantt bar: 01-May-19 to 30-Sep-20]																																															
WF-EW-009-S-301		Staging/General Conditions	22	01-May-19	30-May-19	[Gantt bar: 01-May-19 to 30-May-19]																																															
WF-EW-009-S-302		Construct Wall Feature	120	31-May-19	14-Nov-19	[Gantt bar: 31-May-19 to 14-Nov-19]																																															
WF-EW-009-S-303		Pre-loading (Don Roadway wall South)	229	15-Nov-19	30-Sep-20	[Gantt bar: 15-Nov-19 to 30-Sep-20]																																															
WF-EW-010	16	Keating Channel Modifications	305	03-May-22	03-Jul-23	[Gantt bar: 03-May-22 to 03-Jul-23]																																															
WF-EW-010-301		Staging/Laydown Area	22	03-May-22	01-Jun-22	[Gantt bar: 03-May-22 to 01-Jun-22]																																															
WF-EW-010-302		Channel Modifications	131	04-Jul-22	03-Jul-23	[Gantt bar: 04-Jul-22 to 03-Jul-23]																																															
WF-EW-015	11	Flow Control Weirs	282	02-Mar-20	30-Mar-21	[Gantt bar: 02-Mar-20 to 30-Mar-21]																																															
WF-EW-015-300		Downstream Weir	151	02-Mar-20	30-Mar-21	[Gantt bar: 02-Mar-20 to 30-Mar-21]																																															
WF-EW-015-301		Upstream Weir	151	02-Mar-20	30-Mar-21	[Gantt bar: 02-Mar-20 to 30-Mar-21]																																															
WF-EW-3/4A	4	Phase C2a - Lower Greenway/Spillway	500	01-Nov-18	30-Sep-20	[Gantt bar: 01-Nov-18 to 30-Sep-20]																																															
WF-EW-3/4A-300		Staging/General Conditions	22	01-Nov-18	30-Nov-18	[Gantt bar: 01-Nov-18 to 30-Nov-18]																																															
WF-EW-3/4A-301		Earthwork and Flood Protection Activities	218	01-Mar-19	31-Mar-20	[Gantt bar: 01-Mar-19 to 31-Mar-20]																																															
WF-001-8125		Soil Treatment	152	01-Mar-19	30-Sep-19	[Gantt bar: 01-Mar-19 to 30-Sep-19]																																															
WF-EW-3/4A-302		Excavation	109	01-Mar-19	31-Jul-19	[Gantt bar: 01-Mar-19 to 31-Jul-19]																																															
WF-EW-3/4A-303		Restore Site (includes complete works)	152	03-Jun-19	31-Mar-20	[Gantt bar: 03-Jun-19 to 31-Mar-20]																																															
WF-EW-3/4A-304		Shipping Channel Dockwall Removal	131	01-Apr-20	30-Sep-20	[Gantt bar: 01-Apr-20 to 30-Sep-20]																																															
WF-EW-3/4B	4	Phase C3 - Upper Greenway/Spillway	305	02-Sep-19	30-Oct-20	[Gantt bar: 02-Sep-19 to 30-Oct-20]																																															
WF-EW-3/4B-300		Staging/General Conditions	21	02-Sep-19	30-Sep-19	[Gantt bar: 02-Sep-19 to 30-Sep-19]																																															
WF-EW-3/4B-301		Earthwork and Flood Protection Activities	219	01-Oct-19	30-Oct-20	[Gantt bar: 01-Oct-19 to 30-Oct-20]																																															
WF-EW-3/4B-302		Excavation	109	01-Oct-19	29-May-20	[Gantt bar: 01-Oct-19 to 29-May-20]																																															
WF-EW-3/4B-302-10		Northern Spillway Marine Wall	131	01-Apr-20	30-Sep-20	[Gantt bar: 01-Apr-20 to 30-Sep-20]																																															
WF-EW-3/4B-303		Soil Treatment	262	01-Oct-19	30-Sep-20	[Gantt bar: 01-Oct-19 to 30-Sep-20]																																															
WF-EW-3/4B-304		Restore Site (includes complete works)	153	01-Apr-20	30-Oct-20	[Gantt bar: 01-Apr-20 to 30-Oct-20]																																															
WF-EW-3/4C	4	River Connection at Keating Channel	370	01-Jun-20	29-Oct-21	[Gantt bar: 01-Jun-20 to 29-Oct-21]																																															
WF-EW-3/4C-300		Staging/General Conditions	22	01-Jun-20	30-Jun-20	[Gantt bar: 01-Jun-20 to 30-Jun-20]																																															
WF-EW-3/4C-301		Earthwork and Flood Protection Activities	284	01-Jul-20	29-Oct-21	[Gantt bar: 01-Jul-20 to 29-Oct-21]																																															

Normal Task
 Summary Task
 Summary, Start
 Summary, Finish



Company: HDR, Inc.
 Manager: Ken Smith (Olympia)

Page 3 of 6
 Planner: Jose Theiler

Sort: Task ID
 Planned Finish date: 29-Sep-23

ID	Estimate Source	Description	Remaining Duration	Start	Finish	2016 2017 2018 2019 2020 2021 2022 2023 2024																																																																							
WF-EW-3/4C-302		Excavation	154	01-Jul-20	30-Apr-21	[Gantt bar]																																																																							
WF-EW-3/4C-303		Soil Treatment	240	01-Jul-20	30-Aug-21	[Gantt bar]																																																																							
WF-EW-3/4C-304		Restore Site (includes complete works)	130	03-May-21	29-Oct-21	[Gantt bar]																																																																							
WF-EW-5/6A	3	West End River/Floodplain (Imperial Oil Site)	609	01-Jan-18	30-Apr-20	[Gantt bar]																																																																							
WF-EW-5/6A-300		Staging/General Conditions	43	01-Jan-18	28-Feb-18	[Gantt bar]																																																																							
WF-EW-5/6A-301		Earthwork and Flood Protection Activities	437	01-Mar-18	30-Apr-20	[Gantt bar]																																																																							
WF-001-8115		Establishment of Vegetation	262	01-May-19	30-Apr-20	[Gantt bar]																																																																							
WF-EW-5/6A-302		Excavation	175	01-Mar-18	31-Oct-18	[Gantt bar]																																																																							
WF-EW-5/6A-303		Soil Treatment	240	01-Mar-18	30-Apr-19	[Gantt bar]																																																																							
WF-EW-5/6A-304		Restore Site (West-End - includes complete works)	108	03-Sep-18	30-Apr-19	[Gantt bar]																																																																							
WF-EW-5/6B	4	Central River/Floodplain	544	02-Apr-18	30-Apr-20	[Gantt bar]																																																																							
WF-EW-5/6B-300		Staging/General Conditions	43	01-Nov-18	31-Dec-18	[Gantt bar]																																																																							
WF-EW-5/6B-301		Earthwork and Flood Protection Activities	240	01-Mar-19	30-Apr-20	[Gantt bar]																																																																							
WF-EW-5/6B-302		Excavation	131	01-Mar-19	30-Aug-19	[Gantt bar]																																																																							
WF-EW-5/6B-303		Soil Treatment	218	01-Mar-19	31-Dec-19	[Gantt bar]																																																																							
WF-EW-5/6B-304		Restore Site (Central River - includes complete works)	154	01-Jul-19	30-Apr-20	[Gantt bar]																																																																							
WF-EW-5/6B-305		Demolition	44	02-Apr-18	31-May-18	[Gantt bar]																																																																							
WF-EW-5/6C	3	River Connection at Polson Slip	283	01-Jun-20	30-Jun-21	[Gantt bar]																																																																							
WF-EW-5/6C-300		Staging/General Conditions	22	01-Jun-20	30-Jun-20	[Gantt bar]																																																																							
WF-EW-5/6C-301		Earthwork and Flood Protection Activities	197	01-Jul-20	30-Jun-21	[Gantt bar]																																																																							
WF-EW-5/6C-302		Excavation	132	01-Jul-20	31-Dec-20	[Gantt bar]																																																																							
WF-EW-5/6C-303		Soil Treatment	218	01-Jul-20	30-Apr-21	[Gantt bar]																																																																							
WF-EW-5/6C-304		Restore Site (West Plug - includes complete works)	129	01-Jan-21	30-Jun-21	[Gantt bar]																																																																							
WF-RMS		Roads & Municipal Services	1282	02-Oct-17	30-Aug-22	[Gantt bar]																																																																							
WF-RMS-011	14d	Cherry St. Bridge Demolition & Channel Wall Stabilization	261	02-Dec-19	30-Nov-20	[Gantt bar]																																																																							
WF-RMS-011-300		Staging	22	02-Dec-19	31-Dec-19	[Gantt bar]																																																																							
WF-RMS-011-301		Environmental Protection	22	02-Mar-20	31-Mar-20	[Gantt bar]																																																																							
WF-RMS-011-302		Tie roadway to new alignment	65	02-Mar-20	29-May-20	[Gantt bar]																																																																							
WF-RMS-011-303		Bridge Superstructure Demolition	65	01-Jun-20	28-Aug-20	[Gantt bar]																																																																							
WF-RMS-011-304		Bridge Abutment Demolition & Channel Wall Stabilization	66	31-Aug-20	30-Nov-20	[Gantt bar]																																																																							
WF-RMS-012	12	Eastern Ave. Grade Separation Modifications	326	02-Mar-21	31-May-22	[Gantt bar]																																																																							
WF-RMS-012-300		Eastern Ave. Work	262	02-Mar-21	31-May-22	[Gantt bar]																																																																							
WF-RMS-013	13	Lake Shore Road & Rail Bridge Hydraulic Capacity Improv...	476	05-Mar-18	30-Dec-19	[Gantt bar]																																																																							
WF-RMS-013-300		Staging	22	01-Oct-18	30-Oct-18	[Gantt bar]																																																																							
WF-RMS-013-301		Steel Fabrication	170	05-Mar-18	26-Oct-18	[Gantt bar]																																																																							
WF-RMS-013-302		Substructure	144	31-Oct-18	20-May-19	[Gantt bar]																																																																							
WF-RMS-013-303		Superstructure	160	21-May-19	30-Dec-19	[Gantt bar]																																																																							
WF-RMS-014	18	Don River Hydro Crossing Removal/Replacement	175	02-Apr-18	30-Nov-18	[Gantt bar]																																																																							
WF-RMS-014-300		Facilities Modifications	175	02-Apr-18	30-Nov-18	[Gantt bar]																																																																							
WF-RMS-016	14a	Cherry St. Re-alignment	241	01-Oct-18	29-Nov-19	[Gantt bar]																																																																							
WF-RMS-016-301		Railway corridor to Keating Channel Segment	197	01-Oct-18	30-Sep-19	[Gantt bar]																																																																							
WF-RMS-016-302		Keating Channel to Commissioners Segment	196	01-Mar-19	29-Nov-19	[Gantt bar]																																																																							

Normal Task
 Summary Task
 Summary, Start
 Summary, Finish



Company: HDR, Inc.
 Manager: Ken Smith (Olympia)

Page 4 of 6
 Planner: Jose Theiler

Sort: Task ID
 Planned Finish date: 29-Sep-23

ID	Estimate Source	Description	Remaining Duration	Start	Finish	2015	2016	2017	2018	2019	2020	2021	2022	2023	2024
WF-RMS-016-303		Commissioners to River Valley Segment	153	01-May-19	29-Nov-19										
WF-RMS-016-304		River Valley to Ship Channel Segment	153	01-May-19	29-Nov-19										
WF-RMS-016-305		Open to Traffic	0		29-Nov-19										
WF-RMS-017	15a	Commissioners St. Reconstruction (West of Spillway/Don ...	283	01-May-19	29-May-20										
WF-RMS-017-300		Staging/laydown area	22	01-May-19	30-May-19										
WF-RMS-017-301		Commissioners St (West) Roadway Construction	196	31-May-19	29-May-20										
WF-RMS-018	15c	Commissioners St. Reconstruction (East of Don Roadway/...	326	01-Jun-21	30-Aug-22										
WF-RMS-018-300		Staging/laydown area (Commisioners West)	22	01-Jun-21	30-Jun-21										
WF-RMS-018-301		Commissioners St (East) Roadway Construction	240	01-Jul-21	30-Aug-22										
WF-RMS-019	7a	Don Roadway Reconstruction	369	01-Jan-20	31-May-21										
WF-RMS-019-310		North of Commissioner St.	369	01-Jan-20	31-May-21										
WF-RMS-019-311		Staging/laydown area	22	01-Jan-20	30-Jan-20										
WF-RMS-019-312		Roadway Construction	262	02-Mar-20	31-May-21										
WF-RMS-021	5	Site Wide Municipal Infrastructure	784	01-Oct-18	30-Sep-21										
WF-RMS-021-300		Site wide municipal infrastructure installations	784	01-Oct-18	30-Sep-21										
WF-RMS-023	14b	[New] Cherry St. Bridge Over Keating Channel	305	02-Oct-17	30-Nov-18										
WF-RMS-023-300		Steel Fabrication	155	02-Oct-17	04-May-18										
WF-RMS-023-301		Staging/General Conditions	22	02-Oct-17	31-Oct-17										
WF-RMS-023-302		Substructure	110	01-Nov-17	02-Jul-18										
WF-RMS-023-303		Superstructure	150	07-May-18	30-Nov-18										
WF-RMS-024	14c	Cherry St. Bridge Over New River Valley	521	02-Oct-17	30-Sep-19										
WF-RMS-024-300		Staging/General Conditions	22	02-Oct-17	31-Oct-17										
WF-RMS-024-301		Substructure	219	01-Nov-17	30-Nov-18										
WF-RMS-024-302		Superstructure	216	03-Dec-18	30-Sep-19										
WF-RMS-025	15b	Commissioners Street Bridge	544	02-Oct-17	31-Oct-19										
WF-RMS-025-300		Temporary Road Construction	87	01-Nov-17	01-Mar-18										
WF-RMS-025-301		Substructure	195	02-Mar-18	29-Nov-18										
WF-RMS-025-302		Superstructure	240	30-Nov-18	31-Oct-19										
WF-RMS-025-303		Commisioners Street Bridge Staging/General Conditions	22	02-Oct-17	31-Oct-17										
WF-ZPR		Parks and Development Areas	760	02-Nov-20	29-Sep-23										
WF-PR-028	17b	Promontory Park	481	01-Jun-21	29-Sep-23										
WF-PR-028-300		Promontory Park South	481	01-Jun-21	29-Sep-23										
WF-PR-030	20	River Park North	481	01-Jun-21	29-Sep-23										
WF-PR-030-300		River Park North Construction East	481	01-Jun-21	29-Sep-23										
WF-PR-030-301		River Park North Construction West	481	01-Jun-21	29-Sep-23										
WF-PR-032	21	River Park South	481	01-Jun-21	29-Sep-23										
WF-PR-032-300		River Park South Construction	481	01-Jun-21	29-Sep-23										
WF-PR-035	19	Villiers Island Re-grading	153	02-Nov-20	31-Aug-21										
WF-PR-035-300		Fill Placement	22	02-Nov-20	01-Mar-21										
WF-PR-035-301		Fill Compaction	90	02-Mar-21	05-Jul-21										
WF-PR-035-303		Planting & Site Improvements	41	06-Jul-21	31-Aug-21										
WF-PR-038		On-going Environmental Monitoring	609	01-Jun-21	29-Sep-23										

Normal Task
Normal, Critical
Summary Task
Summary, Critical
Finish Milestone Task
Finish Milestone, Critical
Hammock Task
Summary, Start
Summary, Finish



Company: HDR, Inc.
 Manager: Ken Smith (Olympia)

Page 5 of 6
 Planner: Jose Theiler

Sort: Task ID
 Planned Finish date: 29-Sep-23

