



April 7, 2017

SPECIAL NOTICE

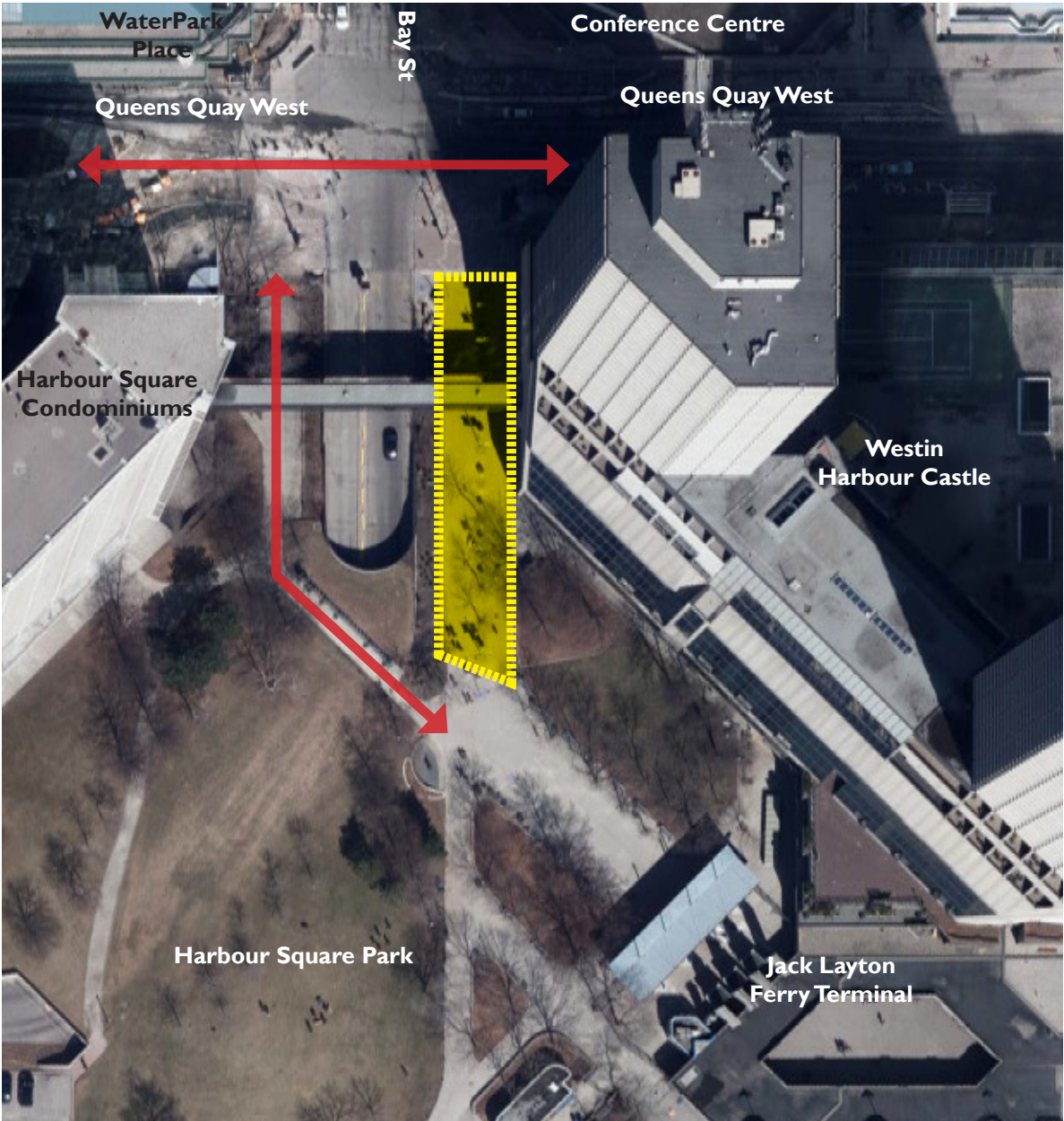
TEMPORARY CLOSURE OF FERRY TERMINAL ENTRANCE AT BAY STREET AND QUEENS QUAY

Beginning on Monday, April 10, the entrance to the Jack Layton Ferry Terminal at Bay Street and Queens Quay will be closed. Signs will be installed directing people to use the western entrance to the terminal site, through Harbour Square Park. This closure will be in place for approximately one week while crews complete test pit drilling.



This work will help us prepare for construction of Phase 1a of the Jack Layton Ferry Terminal and Harbour Square Master Plan, which includes a section of a new walkway at the foot of Bay Street. That work is scheduled to begin in early fall 2017.

More Information:

For more information about this work, please email info@waterfrontoronto.ca



Jack Layton Ferry Terminal and Harbour Square Park - Alternate Route during Test Pit work

-  Walkway closure
-  Alternate route to Ferry Terminal and park