



# marine use strategy

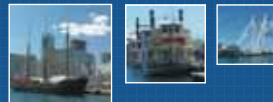
[toronto.waterfront.revitalization.corporation](http://toronto.waterfront.revitalization.corporation)



**Public Meeting**  
Harbourfront Centre, Brigantine Room  
February 28, 2006  
7:00 p.m.



# Welcome



## marine use strategy

[toronto.waterfront.revitalization.corporation](http://toronto.waterfront.revitalization.corporation)

### Christopher Glaisek

Vice President, Planning and Design  
Toronto Waterfront Revitalization Corporation (TWRC)

The Toronto Waterfront Revitalization Corporation welcomes you to the **Public Meeting** to present the draft **Marine Use Strategy**.

**Revitalization of the waterfront** is essential to Toronto's success as a 21st century city.

TWRC believes that **planning for the waterfront does not stop at the water's edge** but embraces both land and marine activities and environment.

The Corporation commissioned this Strategy to ensure that **integrated and visionary planning** is a hallmark of our revitalization efforts.





marine use strategy  
toronto.waterfront.revitalization.corporation

Successful implementation of the Marine Use Strategy will require a **continued partnership approach among stakeholders**.

Need for **working cooperatively with the diverse group of stakeholders** who coexist as marine users on the waterfront.

**More detailed work will be required** to resolve all of the jurisdictional, operational, or financial implications of making this Strategy a reality.

The TWRC is **committed to the integrated planning of the waterfront**.



marine use strategy  
toronto.waterfront.revitalization.corporation

The Corporation would like to **thank the many citizens and representatives of Toronto's marine community** who participated in the development of the Marine Use Strategy.

TWRC acknowledges and thanks the **Steering Committee** which includes representatives from the:

- Toronto Port Authority
- Toronto and Region Conservation Authority
- City of Toronto
- Toronto Economic Development Corporation
- Harbourfront Centre.





# Introduction



marine use strategy

toronto.waterfront.revitalization.corporation

The Marine Use Strategy is a statement of **core values, principles and recommendations** intended to:

- Ensure waterfront revitalization integrates land and marine uses and activities
- Provide a foundation for action for future projects/initiatives related to the marine realm
- Inform planning and decision making that affect marine uses



# Introduction

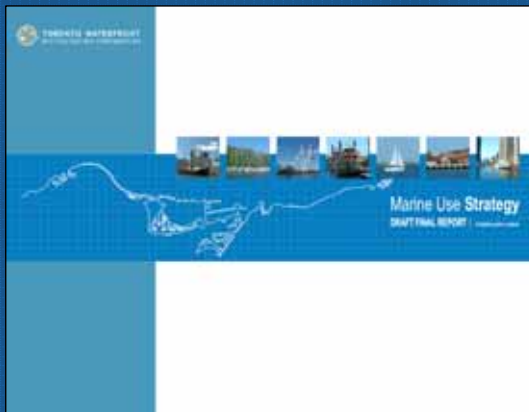


marine use strategy

toronto.waterfront.revitalization.corporation

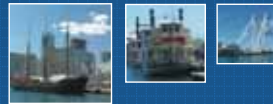
The Strategy is articulated through 2 documents:

1. Marine Use Strategy Draft Report



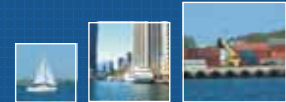
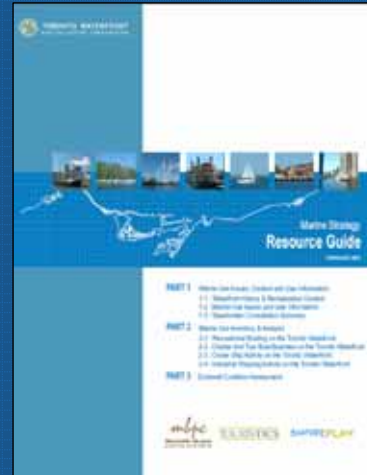


# Introduction

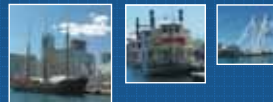


The Strategy is articulated through 2 documents:

## 2. Resource Guide



# Vision



- 1 Recognizing and Expanding an Exceptional Resource
- 2 Embracing Integrated and Sustainable Planning on the Waterfront
- 3 Promoting an Active, Diverse and Accessible Waterfront
- 4 Planning Marine Districts Through Revitalization
- 5 Implementing the Strategy Through Steady Investment





## 1 Recognizing and Expanding an Exceptional Resource

- Recognize the important contributions of marine uses and activities
- Protect and expand the range of facilities and opportunities for marine users
- Foster participation of the marine community in waterfront revitalization
- Support the growth of marine uses and activities in the future



## 1 Recognizing and Expanding an Exceptional Resource

### Implementation ideas...

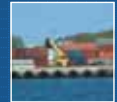
- support long-term tenure for marine users
- ensure marine users are represented as stakeholders in water's edge precinct planning
- support an expanded inventory of marine facilities





## 2 Embracing Integrated and Sustainable Planning on the Waterfront

- Recognize the water's edge requirements of marine uses in planning the interface between land and water
- Increase aquatic habitat, continue improving water quality, and enhance quality of life
- Ensure revitalization contributes to increased safety of marine users and the public



## 2 Embracing Integrated and Sustainable Planning on the Waterfront

### Implementation ideas...

- plan to meet changing needs for marine infrastructure through construction and active management of dockwall space
- foster innovative design solutions for water's edge treatments that maximize safe public access and promote habitat creation
- ensure a consideration of marine use needs is required by the terms of reference for all water's edge planning and design projects

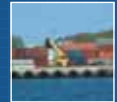




## 2 Embracing Integrated and Sustainable Planning on the Waterfront

### Implementation ideas...

- enhance swimming opportunities through continued improvements to water quality
- maintain appropriate facilities for marine police, EMS and fire services
- participate actively in environmental assessment processes to ensure no conflicts with the Marine Use Strategy



## 3 Promoting an Active, Diverse and Accessible Waterfront

- Support a range of viable marine activities and enhance public awareness of the options available for participation
- Leverage existing marine resources to accommodate and expand opportunities for publicly accessible marine activities
- Acknowledge the transportation and access needs of marine users in planning and designing the water's edge

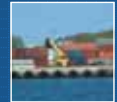




### 3 Promoting an Active, Diverse and Accessible Waterfront

#### Implementation ideas...

- sponsor waterfront events
- work with tourism partners and Council of Commodores to market marine activities and increase participation
- consider the needs of marine users when planning for vehicle parking and access to the dockwall edge for servicing in waterfront precincts



### 3 Promoting an Active, Diverse and Accessible Waterfront

#### Implementation ideas...

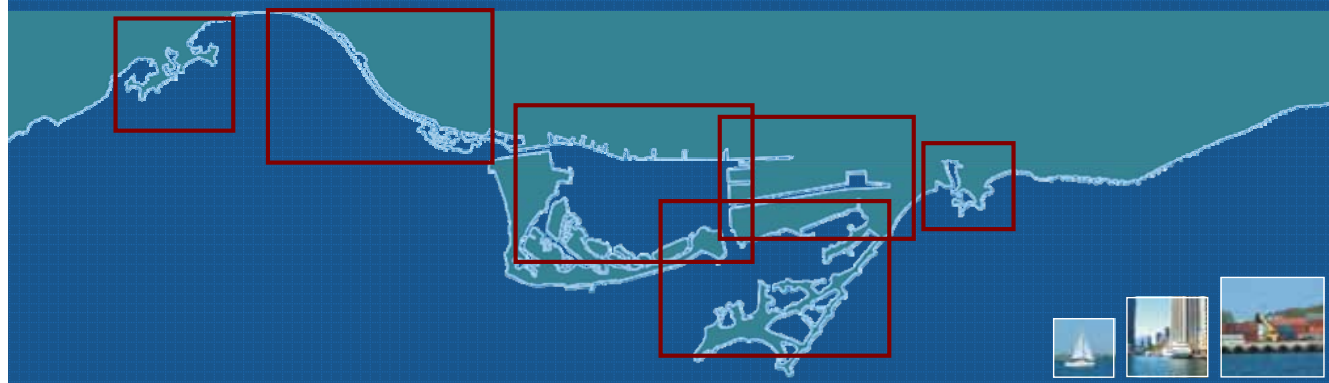
- ensure that water's edge areas are designed to be accessible for people of all ages and physical abilities
- recognize the special role of non-profit boating organizations in enhancing public access to marine activities
- expand the range of facilities to support recreational fishing





## 4 Planning Marine Districts through Revitalization

- The Inner Harbour
- The Port Lands
- The Outer Harbour
- The Lake and Beaches



## The Inner Harbour



### ● East Bayfront Precinct Plan

- additional finger piers to accommodate tour/charter vessels
- 200 metres of free dockwall edge to accommodate large visiting ships
- marine-related tenants in ground floor retail units at the water's edge
- anticipate ongoing industrial shipping to Redpath's facilities at the foot of Jarvis

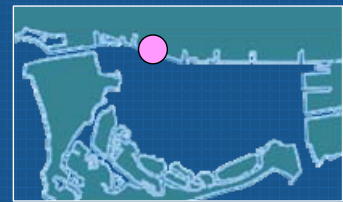
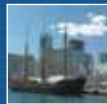
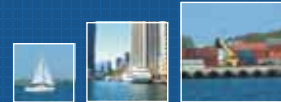




## The Inner Harbour

### ● Yonge Street Precinct Plan

- include marine uses and facilities
- integrate planning of both sides of the slip, acknowledging existing use of the dockwall by charter boats and the Toronto Island Ferry Terminal
- consider redevelopment of the Ferry Terminal, increased ferry service and service to new locations



## The Inner Harbour

### ● Harbourfront

- find a permanent home for Toronto Brigantine and establish a permanent home for the nautical center at Rees Street Slip





## The Inner Harbour

### Tour/Charter Boats

- use existing dockwall as efficiently as possible for mooring of tour/charter boats
- upgrade facilities to service these vessels when making investments in dockwall repairs, particularly at Portland Street Slip ●
- consider a centralized facility for passenger embarkation to maximize the functionality of marine infrastructure for tour/charter boats



## The Inner Harbour

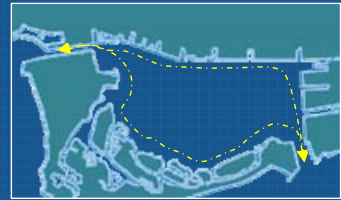
### The Islands

- maintain city-side facilities for Toronto Island marine users
- relocate RCYC city station from Parliament Slip to Ship Channel, west of Cherry Street ●






## The Inner Harbour

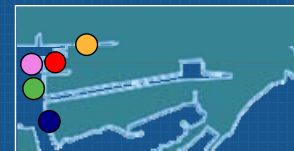


### Other Implementation Ideas






- foster the creation of a network of water taxi stops connecting key destinations (e.g. TPA's Ferry Terminal to Harbourfront) 
- explore opportunities for recreational fishing, including potential locations for facilities such as fishing piers



## The Port Lands



### Implementation Ideas...

- maximize use of TPA's Terminal  for international cruise vessels (but also pursue opportunities to accommodate cruise boats closer to downtown)
- plan for marine uses in all precinct plans, particularly Poulson  and Cousins  Quays
- recognize value of existing Atlas crane  to marine shipping and consider its relocation when the Cousins Quay precinct is redeveloped
- consider a small craft launching area and associated amenities in conjunction with re-naturalization of the mouth of the Don River 





## The Port Lands



### Implementation Ideas...

- affirm that industrial/commercial shipping will continue at TPA facilities and as the primary use of the Ship Channel
- work with TPA and TEDCO to facilitate the use of the Ship Channel for limited recreational boating, subject to appropriate safety measures and management procedures
- encourage TEDCO and the TPA to consider relocation of Bayside Rowing from their current location ● to the north side of the Turning Basin as a catalyst for revitalization



## The Outer Harbour



### Implementation Ideas...

- affirm that non-motorized recreational boating should be the primary activity in the Outer Harbour
- encourage the build out of the Outer Harbour Marina to accommodate growth in recreational boating, and consider a new public boat launch ramp
- resolve the long term location, design, and servicing of facilities for the Outer Harbour Sailing Federation clubs and other users of the north shore through the Lake Ontario Park planning process



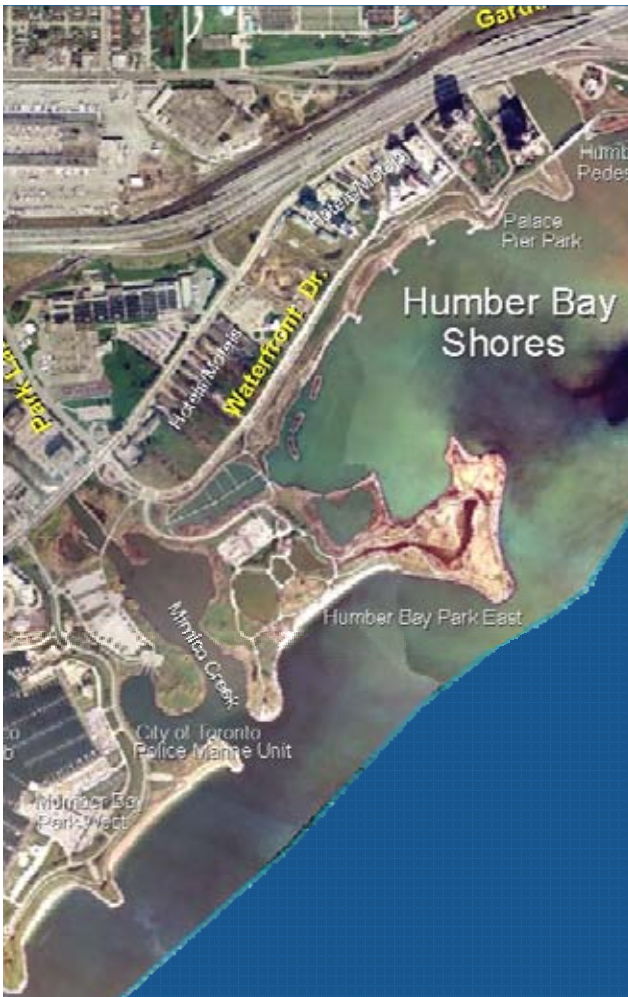


## The Outer Harbour



### Implementation Ideas...

- use investments in public transit and municipal servicing infrastructure in the Port Lands to enhance accessibility and feasibility of recreational boating opportunities in the Outer Harbour
- improve opportunities for recreational fishing, including facilities such as fishing piers
- use the Lake Ontario Park Master Plan to prioritize aquatic habitat and shoreline access improvements



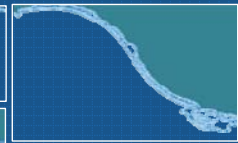
## The Lake and Beaches



### Implementation Ideas...

- maximize value of investment in Western Beaches Watercourse ● by supporting the Advisory Committee's work regarding operations and long-term planning
- maintain public boat launches at Humber Bay ● and Ashbridges Bay ● and Marie Curtis Park, Etobicoke and Bluffer's Park
- maximize opportunities for access to the water for small non-motorized craft (e.g. canoes, kayaks, etc.) along the Lake Ontario shoreline





## The Lake and Beaches

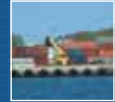
### Implementation Ideas...

- use future investments in waterfront revitalization (e.g. implementation of the Lake Ontario Park master plan and expansion of Ashbridge's Bay Treatment Plant) to improve capacity and function of facilities used by marine users
- resolve current issues related to dredging requirements at Coatsworth Cut and Ashbridges Bay through Lake Ontario Park master plan process
- identify opportunities to create and improve swimming locations



## 5 Implementing the Strategy through Steady Investment

- Address infrastructure and services deficiencies
- Sustain commitment to investments in infrastructure maintenance, repair, upgrades and service/facility provision
- Resolve jurisdictional, financial and operational details using a partnership approach

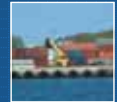




## 5 Implementing the Strategy through Steady Investment

### Implementation ideas...

- include an analysis of dockwall repair requirements in water's edge precinct plans
- identify opportunities to increase the number of boat launches on the waterfront, potentially including the Outer Harbour Marina
- direct capital funding towards construction of safe water's edge areas including appropriate lighting, barriers, and rescue equipment



## 5 Implementing the Strategy through Steady Investment

### Implementation ideas...

- monitor compatibility of marine and other waterfront users and maintain an awareness of the distinct operational issues (such as noise) associated with some marine uses
- recognize that marine uses have a range of security and facility requirements, including the need for land side facilities





marine use strategy  
toronto.waterfront.revitalization.corporation



# marine use strategy

toronto.waterfront.revitalization.corporation

