



WATERFRONToronto

January 2010 Newsletter

Sherbourne Park Pavilion Wins Architecture Award

Waterfront Toronto's striking Sherbourne Park Pavilion, currently under construction, has received an Award of Merit from the 2009 Canadian Architect Awards of Excellence. The annual awards program recognizes architectural design excellence for buildings in the design stage.

The pavilion, designed by Teeple Architects Inc. was called both "elegant and beautiful," by the jury. Jurors commended the architects for designing a "sculptural object that will grace Sherbourne Park and its surroundings" while making a "healthy contribution to the potential vitality of the waterfront."

The Pavilion features a dramatic three dimensional form with exterior zinc clad walls and roofing that makes it equally as beautiful from the park, the lake or from neighbouring towers above. Its unique form was designed to bring together the park's major features including its 240-metre long water channel and year-round water feature that becomes a skating rink in the winter and splash pad in the summer.



Located in the heart of East Bayfront, Sherbourne Park and its 144m² Pavilion is an important part of this emerging waterfront neighbourhood. When the park opens this summer, it will become an important new gathering space for visitors and local residents who come to meet for a coffee with friends, play, skate or take in views of the lake.

Crews Working on Water's Edge Promenade in East Bayfront

Construction continues on East Bayfront's first stretch of water's edge promenade. This 270- metre stretch, which runs along the west side of East Bayfront, from Canada's Sugar Beach to the eastern edge of Sherbourne Park, is scheduled to open this summer.

Crews removed the existing asphalt and underlying concrete slab along the promenade and began excavation of the area south of Corus. About a third of the site has been excavated to date and is now being backfilled with granular material. Once the backfilling is complete, crews will proceed to install the soil cell framework needed to promote the growth of healthy, mature trees on the promenade.

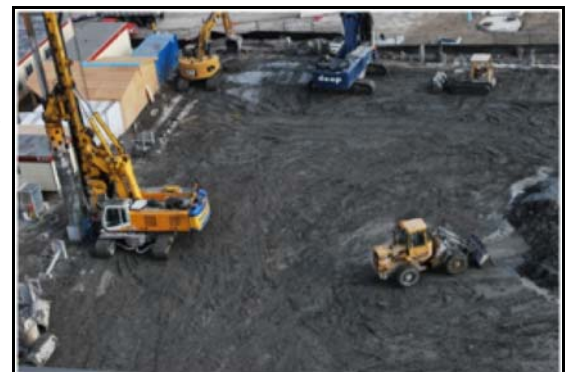
The 19 metres wide water's edge promenade, will ultimately span the entire length of East Bayfront from Jarvis to Parliament Streets. An 11-metre wide wooden boardwalk is also planned alongside the promenade and will be built over the stormwater management facility for East Bayfront as the area develops.



George Brown College Update

Construction at George Brown College's new waterfront campus in East Bayfront is moving forward on schedule with caisson drilling now complete on more than two thirds of the site. Caissons – interlocking concrete columns located around the perimeter of the building's footprint – are a critical first component in the deep foundations work for the building. When caisson drilling is complete, crews will begin excavating the four-storey deep hole necessary for the building's foundation. Excavation is expected to be complete by this summer.

In addition to bringing more than 3,500 full-time students to the waterfront in September 2012, George Brown College's new waterfront campus will also play a major role in facilitating the centralized heating and cooling of East Bayfront. With support from the City of Toronto and the cooperation of George Brown College, Waterfront Toronto is planning to build the new District Energy Centre for the first phase of East Bayfront in the underground parking garage of the campus.



District Energy is a highly-sustainable technology that uses an interconnected network of underground pipes to provide centralized heating and cooling for all new buildings in the area. When it comes online, the new District Energy Centre at George

Brown College will replace the temporary facility that is currently located in front of Corus Quay.

Waterfront Development Recognized

Waterfront Development was named a semi-finalist in Torontoist's Heroes and Villains of 2009 competition. Launched by popular website Torontoist, the contest asked readers to vote for the very best and worst people, places and things in Toronto during 2009.

The 'Waterfront Development' category, which featured a wonderful illustration of the Simcoe WaveDeck, was nominated thanks to what Torontoist called the "palpable turning point" in waterfront development during 2009. Torontoist highlighted the opening of the Simcoe and Rees wave decks, groundbreakings at Sherbourne Park and Canada's Sugar Beach, and Toronto's winning PanAm bid as evidence of momentum on the waterfront.

More than 30,000 votes were cast during the competition whose ultimate winner was the Toronto Public Library.

** Illustration by Brett Lamb – courtesy of Torontoist**



Construction Ahead of Schedule at Canada's Sugar Beach

Work continues to progress ahead of schedule at Canada's Sugar Beach where crews have begun installing the park's large, signature rock outcroppings. In addition to the bright pink umbrellas sprinkled along the beach, the park's design calls for two oversized, granite rock formations — one located on the beach and the second in the park's plaza space next to Corus Quay. The rocks, which will feature candy-coloured stripes made of a flexible and durable thermoplastic, will add to the whimsical feel of the park.

The granite rocks were selected from a quarry in northern Quebec last fall by Waterfront Toronto and the park's design team Claude Cormier Architectes Payagistes. The granite was then sliced into 1.5 metre-wide pieces using an industrial strength saw, categorized and trucked to the park site. Much like putting together a jigsaw puzzle, crews used a 165-tonne crane to assemble the rock outcropping piece by piece on site. The granite outcropping at the beach is over six metres long and wide, and about one metre high. The second rock outcropping at the plaza, which will be installed early next month, is more than double the size of the rock at the beach.

Canada's Sugar Beach, located at the foot of Lower Jarvis Street adjacent to the Redpath Sugar Factory, is on track to open this June.



River City Sales Office Coming February 2010

The sales office for the first private sector development in the West Don Lands, River City, is slated to launch in February. The design was presented to Waterfront Toronto's Design Review Panel in November, with a unanimously positive reception. Plans for the LEED Gold development include 850 residential units of condominiums, lofts and townhouses, as well as boutiques, stores and restaurants.

Waterfront Toronto, along with developers Urban Capital, is anticipating a successful public sales launch for the first phase of development. Designed by two of Canada's most respected and award-winning design firms, Saucier + Perrotte Architects and ZAS Architects, first phase occupancy is slated for 2012. For more information, visit www.RiverCityToronto.com



New GTA News Online Magazine

A new online magazine has just launched, publishing features on economic growth in and around the Toronto area. Aptly named *Yonge Street*, the magazine focuses on the talent, innovation, diversity and quality of life that Toronto has to offer. Its aim is to look towards the future and what is working well in and around the GTA. Waterfront Toronto is proud to be a supporter of this publication that helps to spread the word about the many great things happening within the 416 and 905 communities.

Yonge Street can be found online at <http://www.yongestreetmedia.ca/>

WATERFRONT TORONTO FLICKR GROUP

Photo of the month

In this new regular feature we'll be highlighting some of the great photographs submitted by the public to the Waterfront Toronto Flickr group. You can contribute to the group by visiting <http://www.flickr.com/groups/waterfrontoronto> and clicking on the "Join this Group" link. Photos added to the group are automatically included in a slide show that appears on Waterfront Toronto's new room



at <http://news.waterfrontoronto.ca/>.

We look forward to seeing what you've captured.

Featured image - 'Looking up Spadina' by veggiefrog



COMMUNICATIONS SATISFACTION SURVEY RESULTS

Thank you for taking our survey!

The results are in and we're pouring over your feedback to determine how to best to improve Waterfront Toronto communications. We're happy to report that the vast majority of survey respondents are satisfied with the communications they receive from us. Some areas that were identified for improvement included increasing the quality and number of visuals in the new sletter, providing earlier notice of public meetings and the need to enhance the overall usability of the website. We were pleased to learn that respondents are very engaged in the revitalization process. The majority of readers use our communications to monitor progress and to follow updates on construction and sustainability on the waterfront.

Stay tuned for an announcement of our upgraded website to be launched this spring.

Reader comments:

"I can't always get to meetings, but I like getting the information and pass it on. Sometimes notice of meetings is too short."

"I was pleased to see tonight that you added Social Media Newsroom...great idea. Although the newsletter is very informative, I wanted to see something else...."

Upcoming Board of Directors Meeting

Wednesday, February 17, 2009

Please check our website for meeting agenda with time and location.

Upcoming Design Review Panel Meetings

Please note that there will be no meeting of the Design Review Panel on February 10th.

The next meeting will take place on Wednesday, March 10th.

Design Review Panel meetings are held at Waterfront Toronto Offices – 20 Bay Street, Suite 1310 from 9:00 a.m. – 1:30 p.m. For more information, please check our website for the meeting agenda.

Join Waterfront Toronto on [Facebook](#), [Flickr](#) and [YouTube](#)

To view past newsletters, please click [here](#).

To subscribe, please click [here](#).

To unsubscribe, please click [here](#).